

MSU Extension Publication Archive

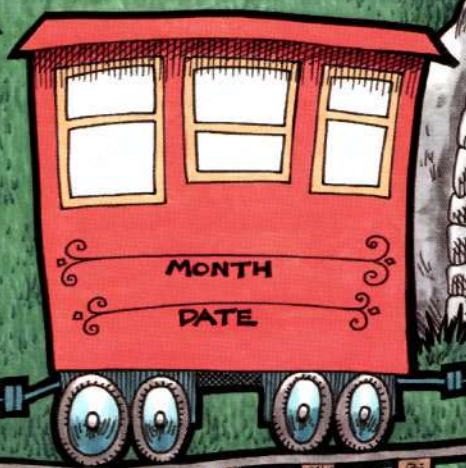
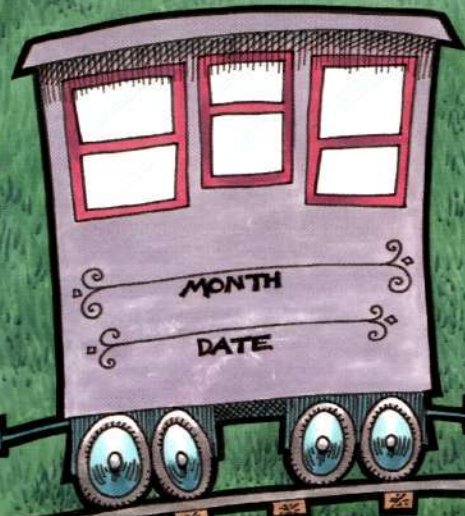
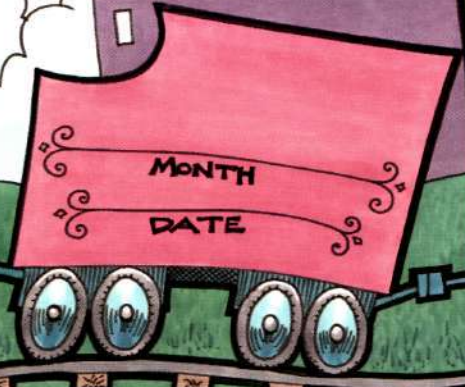
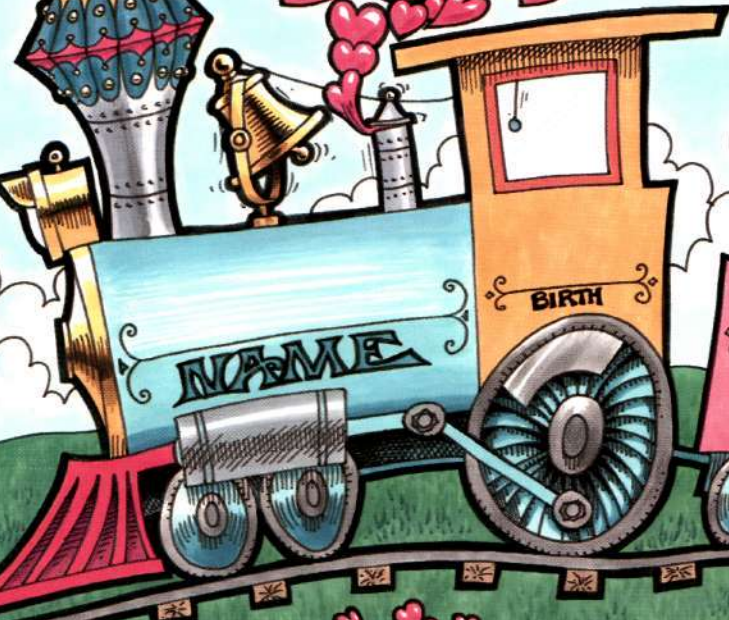
Archive copy of publication, do not use for current recommendations. Up-to-date information about many topics can be obtained from your local Extension office.

Building Strong Families Immunization Schedule
Michigan State University Extension Service
Issued February 1995
2 pages

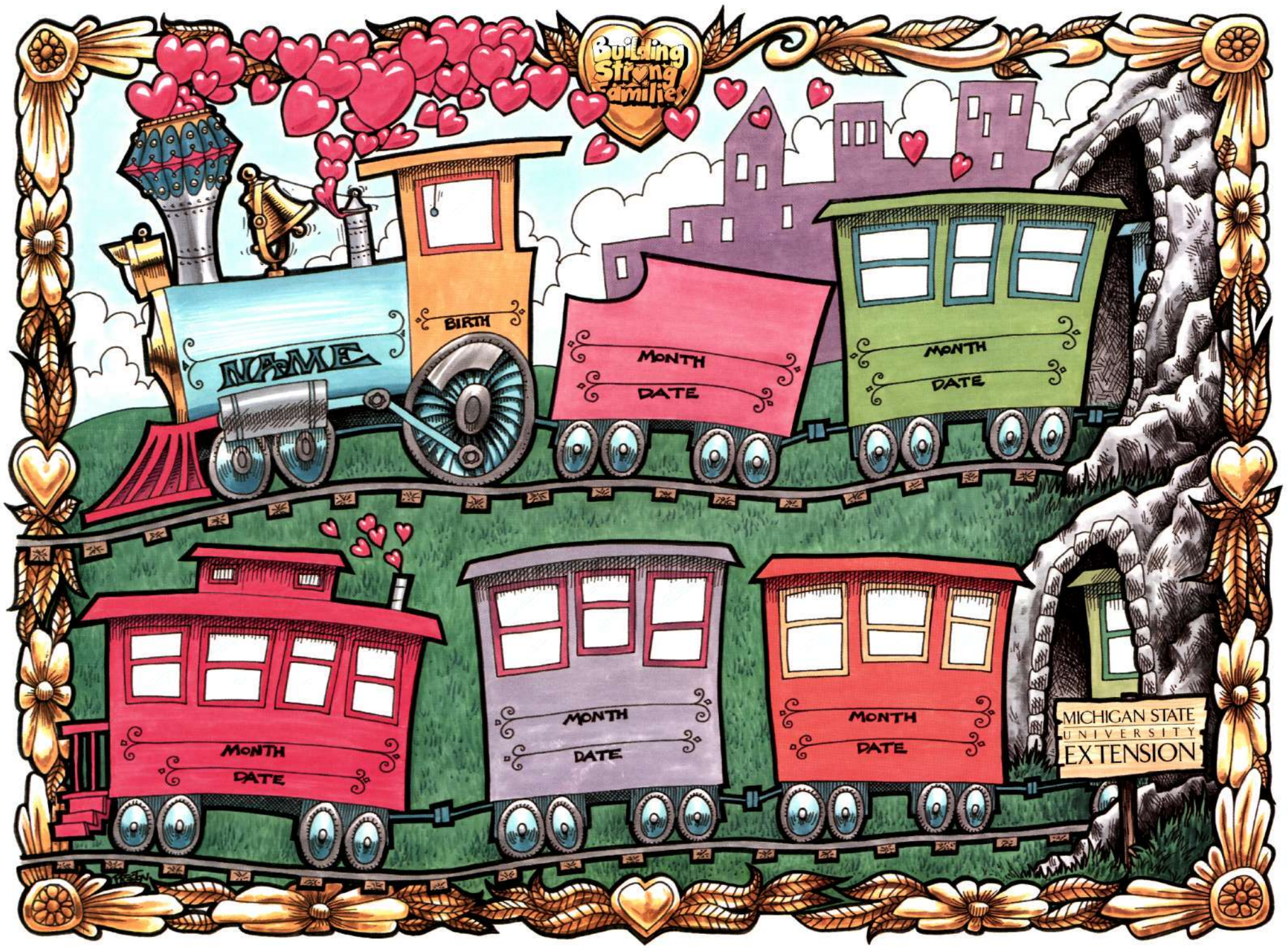
The PDF file was provided courtesy of the Michigan State University Library

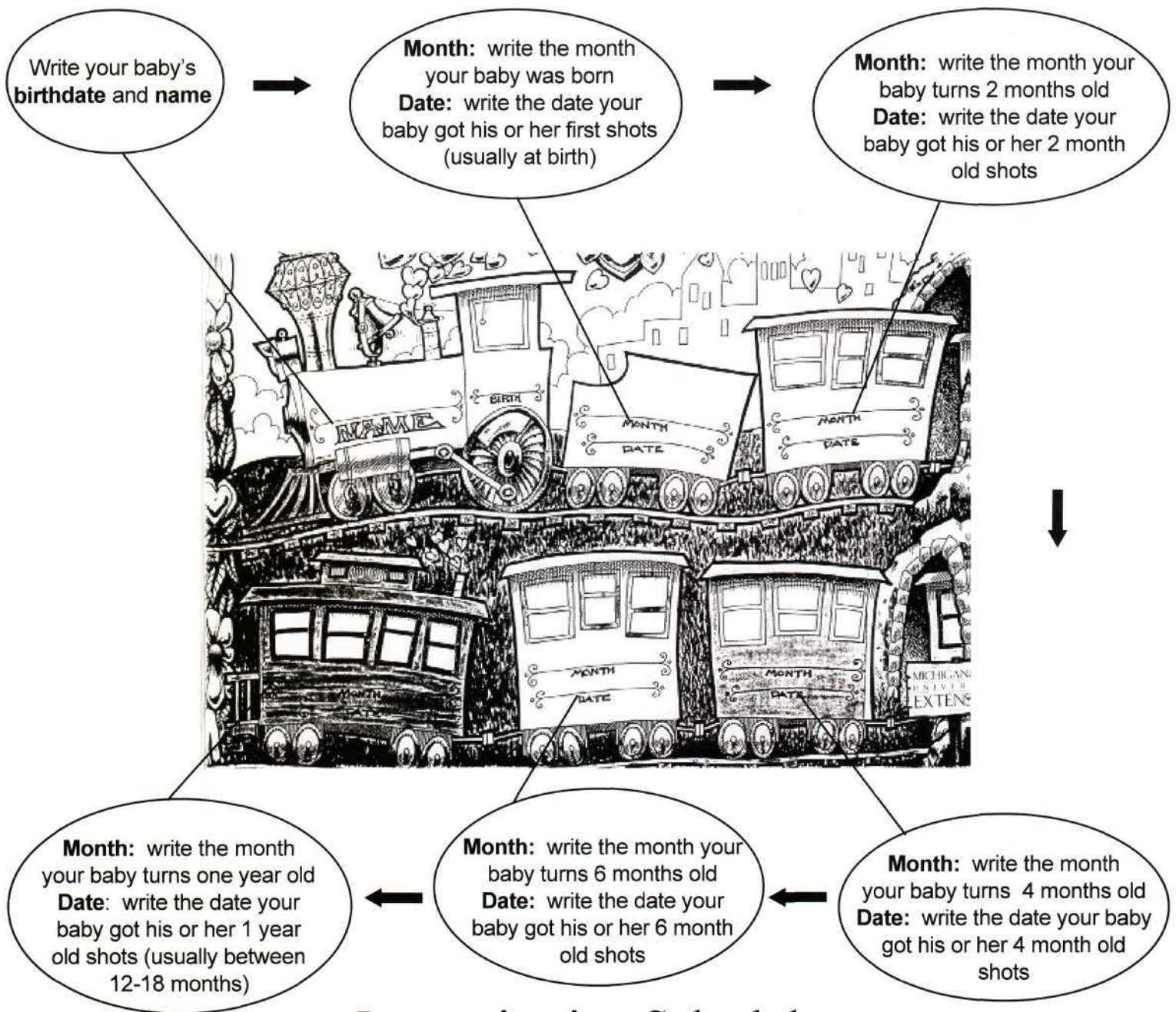
Scroll down to view the publication.

Building Strong Families



MICHIGAN STATE UNIVERSITY EXTENSION





Immunization Schedule

Month Baby is born	Jan.	Feb.	March	April	May	June	July	Aug.	Sept.	Oct.	Nov.	Dec.
Shot #1	Jan.	Feb.	March	April	May	June	July	Aug.	Sept.	Oct.	Nov.	Dec.
Shot #2	March	April	May	June	July	Aug.	Sept.	Oct.	Nov.	Dec.	Jan.	Feb.
Shot #3	May	June	July	Aug.	Sept.	Oct.	Nov.	Dec.	Jan.	Feb.	March	April
Shot #4	July	Aug.	Sept.	Oct.	Nov.	Dec.	Jan.	Feb.	March	April	May	June
Shot #5	Jan. - July	Feb. - Aug.	March - Sept.	April - Oct.	May - Nov.	June - Dec.	July - Jan	Aug. - Feb.	Sept. - March	Oct. - April	Nov. - May	Dec. - June

- Note: If your child is older and has not had any shots, go to a clinic and let that office give the shots to bring your child up to date. Then, write in the dates for future visits. For more information on immunizations, call your health care provider.
- For information on ordering more immunization trains: Phone: 517-355-6586, Fax: 517-353-6343, or call your local MSU Extension office.