

MSU Extension Publication Archive

Archive copy of publication, do not use for current recommendations. Up-to-date information about many topics can be obtained from your local Extension office.

Common Fruit Insects
Michigan State University Extension Service
Extension Entomologists from the North Central States
Issued 1994
1 pages

The PDF file was provided courtesy of the Michigan State University Library

Scroll down to view the publication.

COMMON FRUIT INSECTS

For safe and effective use of insecticides, always identify the problem correctly.



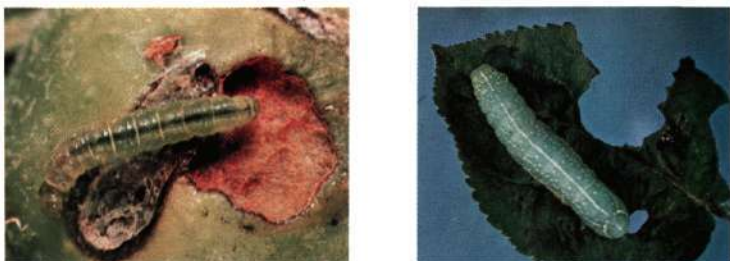
1. Codling moth adult and new larval entry, and damaged or "wormy" apple



2. Apple maggot in apple, and blotching and streaking of maggot-infested fruit

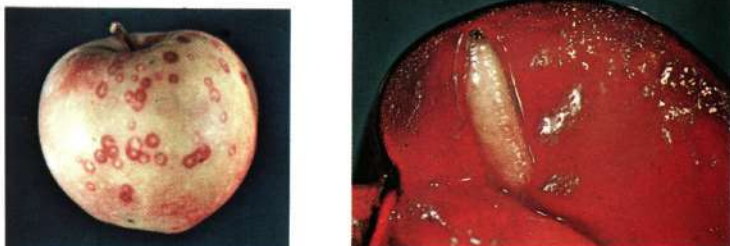


5. Rosy apple aphid, and deformed fruit shown with normal apples for comparison



3. Red-banded leaf roller and damage

4. Green fruitworm

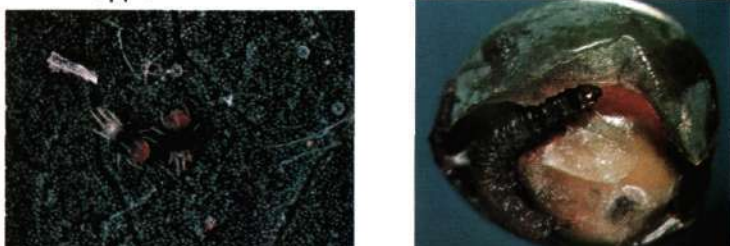


6. San Jose scale on apple

7. Cherry fruit fly maggot



8. Plum curculio adult and egg-laying slit on cherry, and curculio larva in plum



9. Two-spotted spider mite and eggs (enlarged). Not an insect.

10. Grape berry moth larva and damage



11. Oriental fruit moth. Twig damage and larva in peach.

12. Peach tree borer and pupa