

MSU Extension Publication Archive

Archive copy of publication, do not use for current recommendations. Up-to-date information about many topics can be obtained from your local Extension office.

Common Forage Legume Insects
Michigan State University Extension Service
Extension Entomologists from the North Central States
Issued 1994
1 pages

The PDF file was provided courtesy of the Michigan State University Library

Scroll down to view the publication.

COMMON FORAGE LEGUME INSECTS

For safe and effective use of insecticides, always identify the problem correctly.



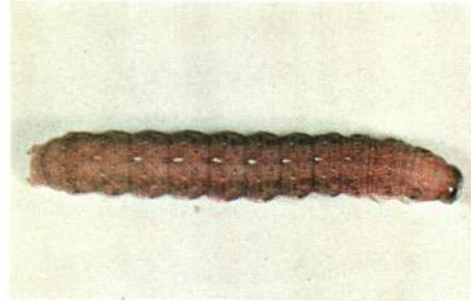
1. Alfalfa weevil adult, and larvae and damage



2. Clover leaf weevil larva



3. Sweet clover weevil and typical damage



4. Varigated cutworm



5. Grasshopper



6. Green clover worm



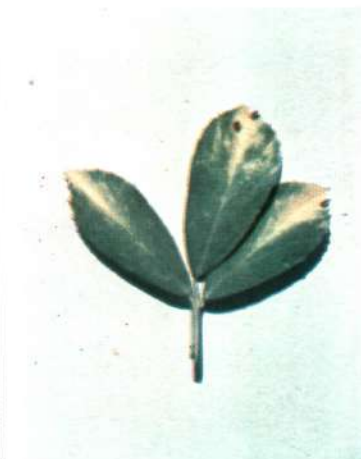
8. Meadow spittlebug and nymphs



9. Spotted alfalfa aphid



7. Potato leafhopper (greatly enlarged) and leafhopper damage to alfalfa



10. Pea aphid