

MSU Extension Publication Archive

Archive copy of publication, do not use for current recommendations. Up-to-date information about many topics can be obtained from your local Extension office.

Common Small Grain Insects
Michigan State University Extension Service
Extension Entomologists from the North Central States
Issued 1994
1 pages

The PDF file was provided courtesy of the Michigan State University Library

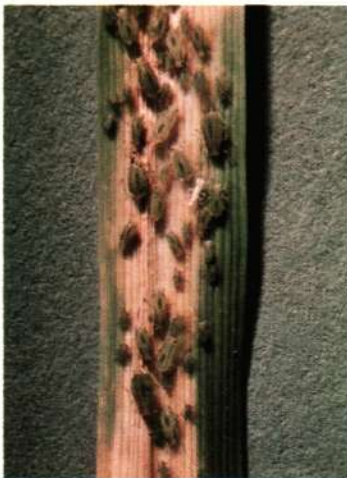
Scroll down to view the publication.

COMMON SMALL GRAIN INSECTS

For safe and effective use of insecticides, always identify the problem correctly.



1. Cereal leaf beetle adult, eggs, larva, and damage



2. Greenbug and damage



3. Thrips (greatly enlarged)



4. Hessian fly larva, and puparium showing location behind lower leaf sheaths



5. Armyworm



6. Grasshopper



7. Chinch bug nymphs and adult, and adult greatly enlarged



8. Wheat stem maggot



9. Wheat stem sawfly



10. Common stalk borer



11. Wireworm and damage to seed