

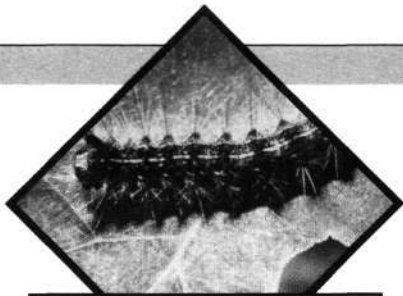
MSU Extension Publication Archive

Archive copy of publication, do not use for current recommendations. Up-to-date information about many topics can be obtained from your local Extension office.

Cloth Banding Trees to Suppress Gypsy Moth
Michigan State University
Cooperative Extension Service
March 1991
2 pages

The PDF file was provided courtesy of the Michigan State University Library

Scroll down to view the publication.



Homeowner Gypsy Moth Strategies

Cloth Banding Trees to Suppress the Gypsy Moth

Cooperative Extension Service, Michigan State University

Small gypsy moth caterpillars feed on trees during the daytime. However, as the caterpillars become larger and more noticeable on foliage, they begin a daily trek from the canopy of the tree to escape direct sunlight and predators. Common daytime hiding places include leaf litter, tree bark crevices, and other places that provide protection. Toward evening, the caterpillars come out of hiding and migrate up the tree to feed on the leaves.

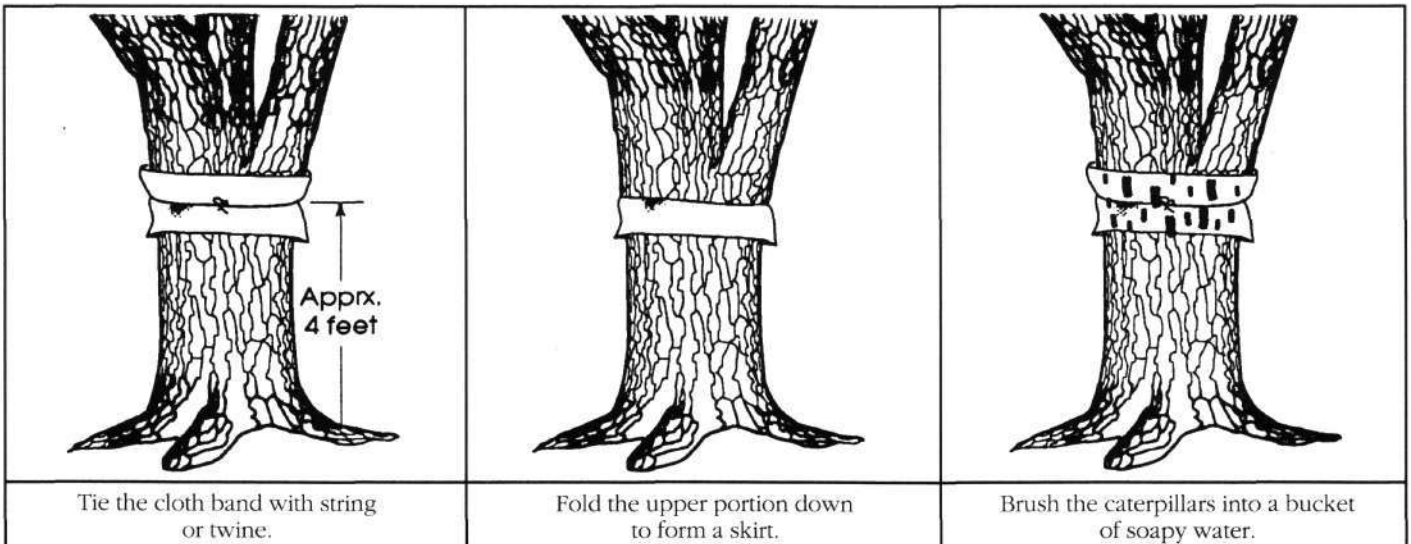
This change in behavior by the larger gypsy moth caterpillars gives homeowners a chance to do some small scale control activities. Using cloth and string or twine, you can construct an artificial hiding place for the caterpillars. Research shows that using dark, medium weight fabrics work best (light weight fabrics tend to stick together when wet). Cut the cloth 12 to 18 inches wide and long enough to wrap completely around the tree about chest high. Tie the cloth band with string or twine as pictured, then fold the upper portion down to form a "skirt" around the tree. For best results, let the skirt be slightly ruffled so that it is easy

for the caterpillars to hide beneath both sections of the cloth.

Caterpillars collect under the cloth during the morning hours as the day begins to warm up. For best control, sweep the gypsy moth caterpillars from underneath the cloth into a bucket of soapy water every day. The soapy water kills the caterpillars immediately. Use a small brush, or gloved hands to remove the caterpillars from the cloth because some people experience an allergic reaction to the "hairs" on the gypsy moth caterpillar.

Begin banding when you see caterpillars on the tree trunk during the day, usually in early to mid-June. Remove the bands when the caterpillars begin to pupate in July.

Trees can withstand up to 50% loss of leaves without negative effects, but 75% or more loss may make trees more vulnerable to disease and other insect pests. For more information contact your Cooperative Extension Service county office.





MSU is an Affirmative-Action Equal-Opportunity Institution. Cooperative Extension Service programs are open to all without regard to race, color, national origin, sex or handicap.

Issued in furtherance of Cooperative Extension work in agriculture and home economics, acts of May 8, and June 30, 1914, in cooperation with the U.S. Department of Agriculture. Michael J. Tate, interim director, Cooperative Extension Service. Michigan State University, E. Lansing, MI 48824.

This information is for educational purposes only. Reference to commercial products or trade names does not imply endorsement by the Cooperative Extension Service or bias against those not mentioned. This bulletin becomes public property upon publication and may be reprinted verbatim as a separate or within another publication with credit to MSU. Reprinting cannot be used to endorse or advertise a commercial product or company.

