

## **MSU Extension Publication Archive**

Archive copy of publication, do not use for current recommendations. Up-to-date information about many topics can be obtained from your local Extension office.

Portable Range Shelter  
Michigan State University Extension Service  
C.H. Jefferson, E.R. Hancock  
Reprinted May 1944  
4 pages

The PDF file was provided courtesy of the Michigan State University Library

**Scroll down to view the publication.**

## PORTABLE RANGE SHELTER

By C. H. JEFFERSON and E. R. HANCOCK



Too frequently, losses in chick raising are caused by over-crowded and poorly ventilated brooder houses.

The portable range shelter shown is a recent development in the housing of pullets during hot weather. It provides ideal conditions for development during the summer.

The more important advantages of a range shelter are:

1. Can be easily moved;
2. Provides shade during the day;
3. Allows for ample ventilation;
4. Economical to build.

This shelter will house about 100 pullets. It is built on skids so it may be easily moved. The floor is made of one inch poultry netting, allowing droppings to pass through.

All four sides are constructed of one inch poultry netting to allow free ventilation. The roof is made of shiplap and heavy roofing material.

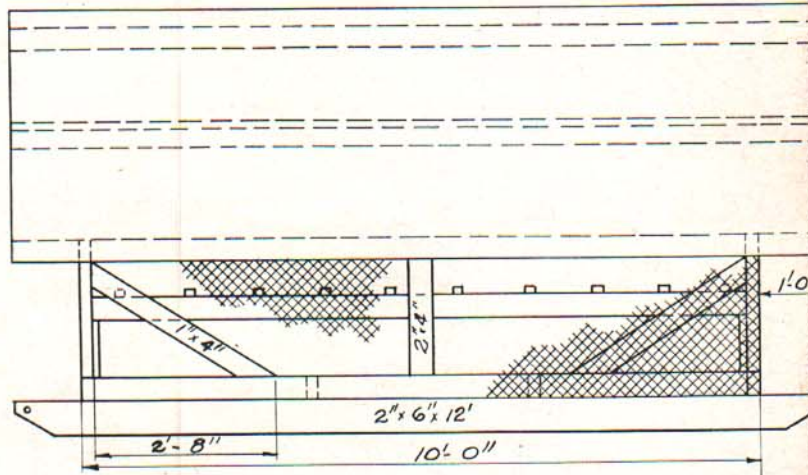
To obtain best results, the shelter should be frequently moved to clean range and all manure on the old site should be removed.

### MICHIGAN STATE COLLEGE

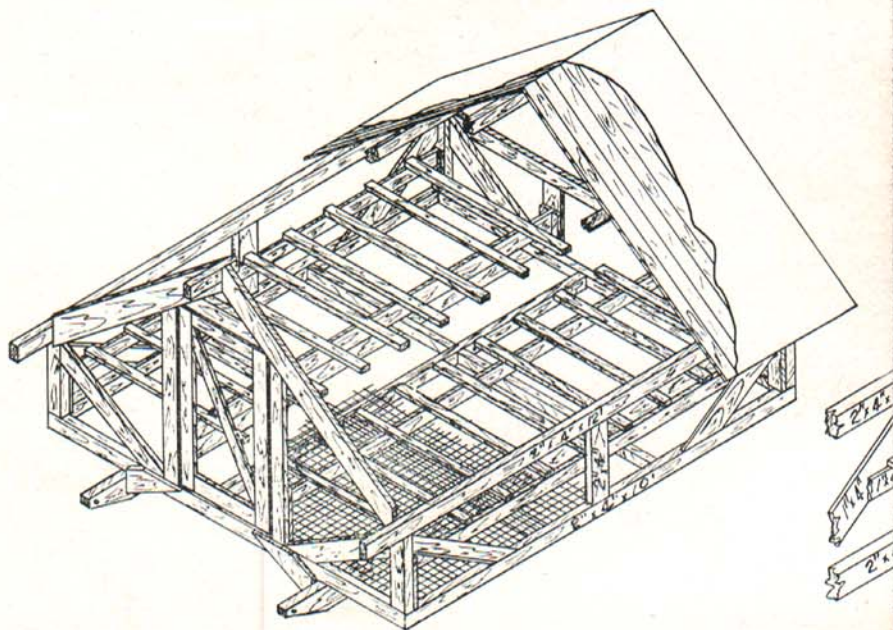
#### EXTENSION DIVISION

R. J. Baldwin, Director

Printed and distributed in furtherance of the purposes of the cooperative agricultural extension work provided for in the Acts of Congress May 8 and June 30, 1914, Michigan State College of Agriculture and Applied Science and U. S. Department of Agriculture, cooperating.



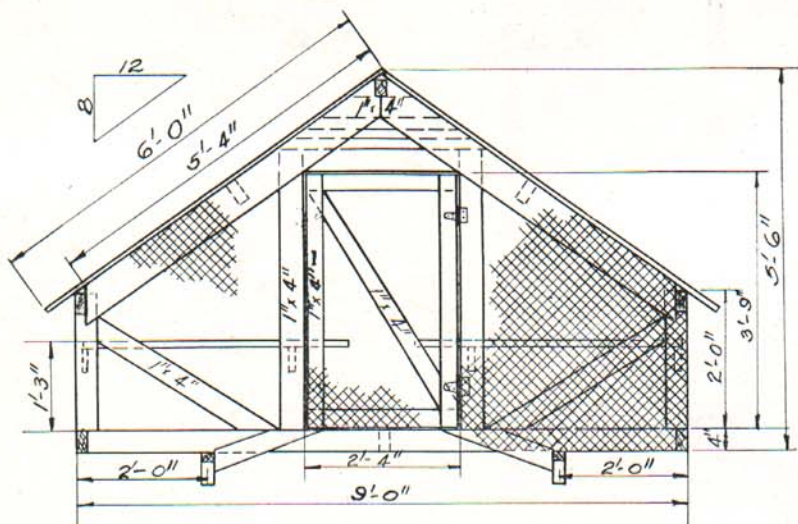
SIDE ELEVATION



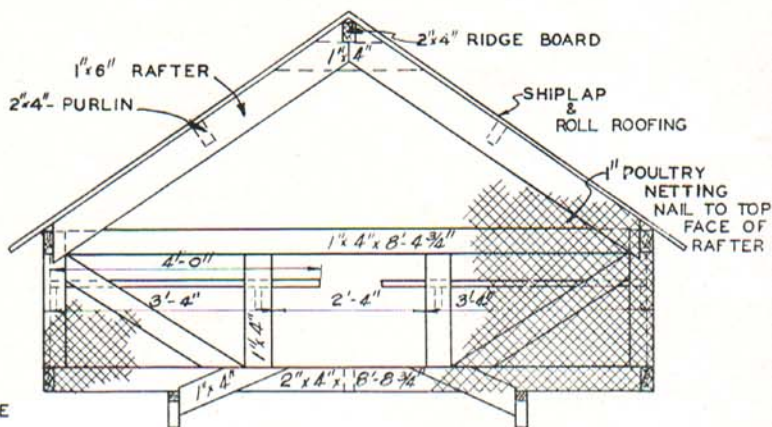
ISOMETRIC



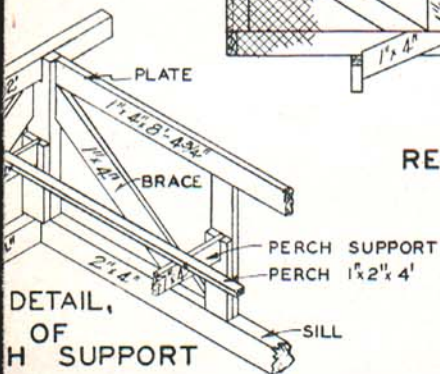
PERC



FRONT ELEVATION



REAR ELEVATION



DETAIL,  
OF  
H SUPPORT

SUMMER SHELTER FOR PULLETS	
AGRI. ENG. DEPT.	PL. S. N. DR. L. J. B.
M. S. C.	CH. C. H. DR. L. J. B.
E. LANSING, MICH.	SCALE 3/4" = 1'-0"
DATE 4-21-32	NO.

## Bill of Material for Range Shelter

Use	No. Pieces	Size	Material
Skids	2	2" x 6" — 12'	
Joist	9	2" x 4" — 10'	
Purlin			
Plate	2	2" x 4" — 12'	
Ridge	1	2" x 4" — 12'	
Studs	1	2" x 4" — 12'	
Rafters	2	1" x 6" — 12'	
Perches	18	1" x 2" — 4'	
Braces	9	1" x 4" — 12'	
Door frame			
Door			
Perch Support			
Facia boards	2	1" x 2" — 12'	
Roof boards	16	1" x 10" — 12'	Shiplap
Poultry Netting	32'	3' wide	1" Mesh
Netting (Poultry)	70'	2' wide	1" Mesh
Wire	25'	No. 10 wire	
Hinges	1 pr.	3"	Strap
Nails	4 lbs.	16d	
	4 lbs.	6d	
	3 lbs.	8d	
	3 lbs.	½ staples	
Roofing	2 rolls		2 ply roofing paper

