

MSU Extension Publication Archive

Archive copy of publication, do not use for current recommendations. Up-to-date information about many topics can be obtained from your local Extension office.

Farmhouses

Michigan State University Agricultural Experiment Station

Circular Bulletin – Farm Building Series

B.F.Cargill, Agricultural Engineering; Coral Morris, Home Management; E.A. Kazarian,
Agricultural Engineering

Issued January 1957

16 pages

The PDF file was provided courtesy of the Michigan State University Library

Scroll down to view the publication.

78.161

FARM HOUSES

PREPARED BY

B. F. CARGILL

Extension specialist in Agricultural Engineering

CORAL MORRIS

Extension specialist in Home Management

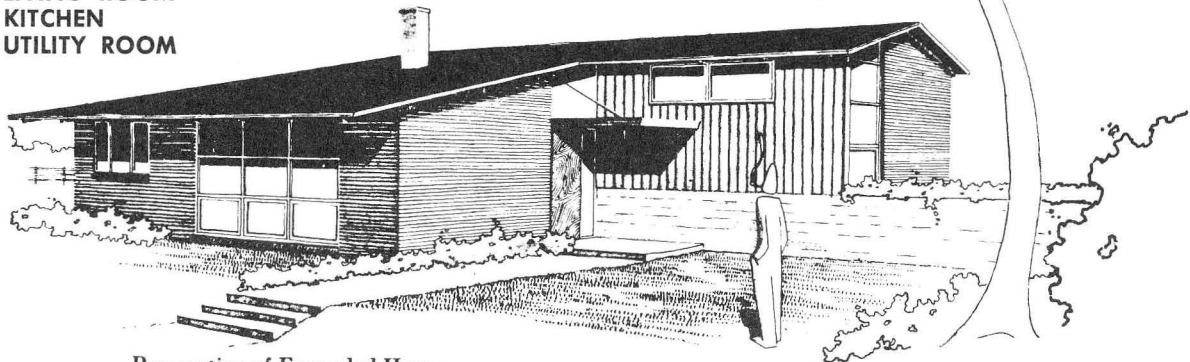
E. A. KAZARIAN

Instructor in Agricultural Engineering

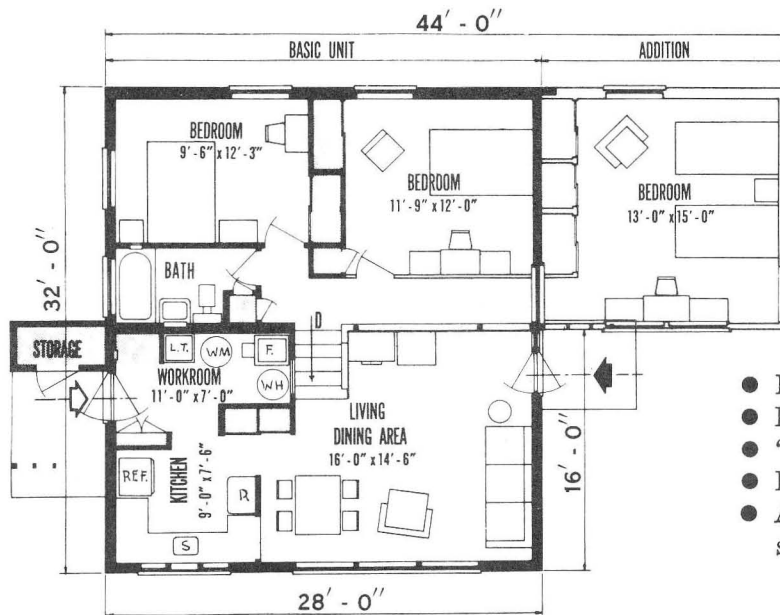
This circular includes descriptions of new farmhouse plans. For other descriptions, see Farm Building Circular 712, "Farmhouse Plans."

Split-level Expansible

- 3 BEDROOMS
- LIVING ROOM
- KITCHEN
- UTILITY ROOM



Perspective of Expanded House



Plan No. 7128
10 Sheets

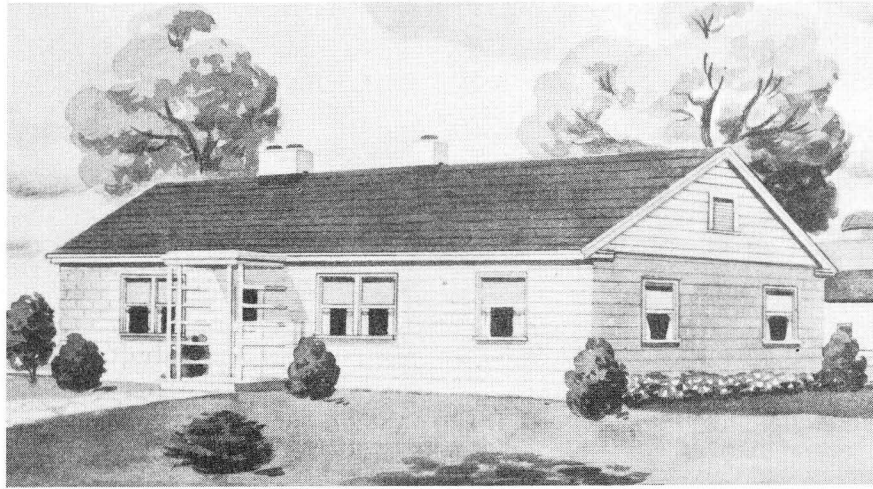
- Excellent storage throughout.
- Living room with dining area.
- "U" shaped kitchen.
- Rear entrance into utility room.
- Area of completed house, 1152 square feet.

Working drawings may be obtained at cost from the Agricultural Engineering Department, Michigan State University, East Lansing, or your County Agricultural Agent

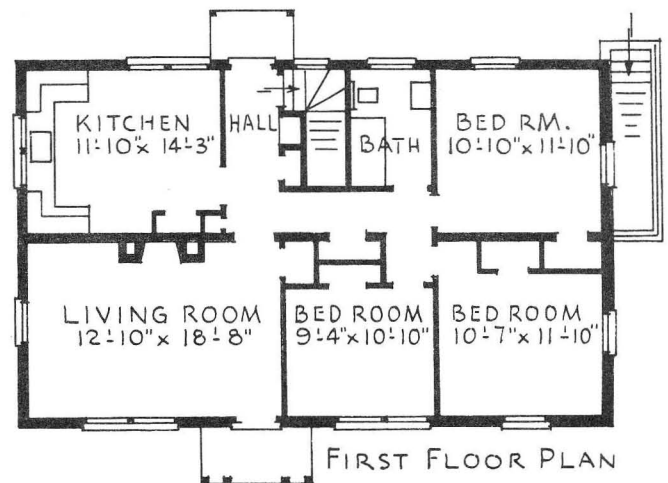
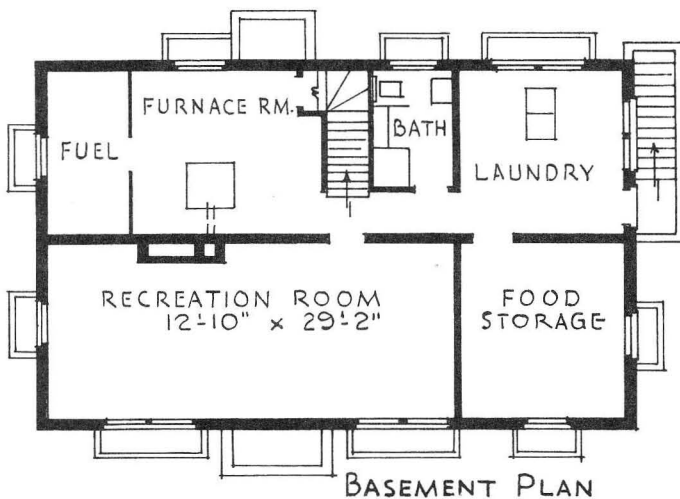
MICHIGAN STATE UNIVERSITY :: COOPERATIVE EXTENSION SERVICE
DEPARTMENTS OF AGRICULTURAL ENGINEERING AND HOME MANAGEMENT
EAST LANSING

● ONE STORY EXPANSIBLE, 3 bedrooms, living room, kitchen, basement.

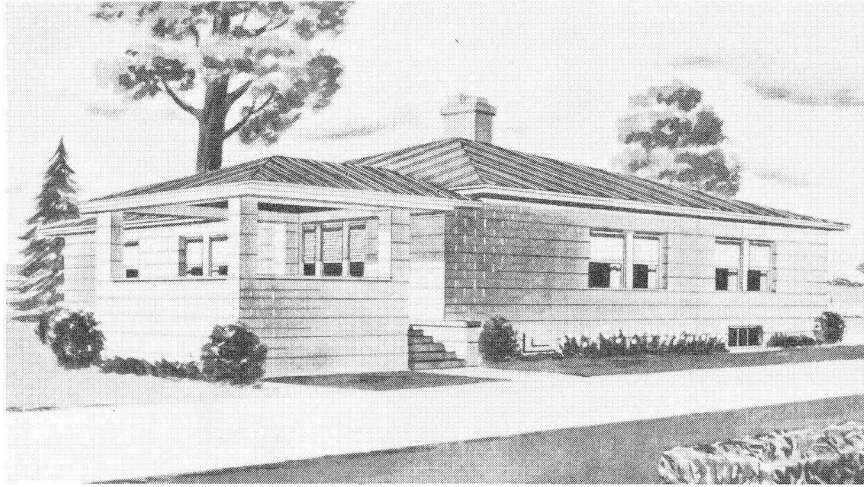
Plan No. 7023N
6 Sheets



- Designed so that basic unit may be built with one bedroom first and two bedrooms added later.
- Large kitchen with dining space.
- Economical rectangular shape.
- Limited storage.
- Front entrance directly into living room.
- Central hall connecting all first floor rooms.
- Clean-up area in rear hall.
- Precast concrete joist floor.
- First floor area, 1072 square feet.

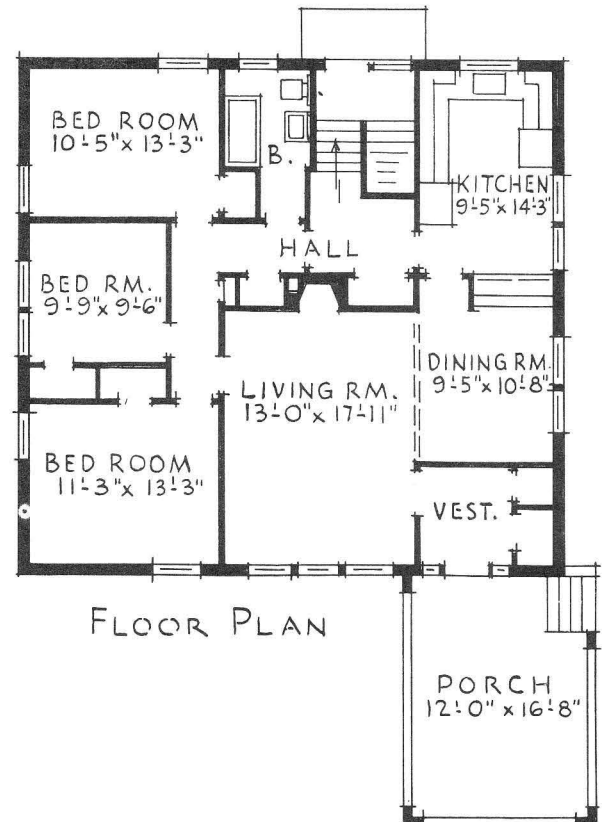
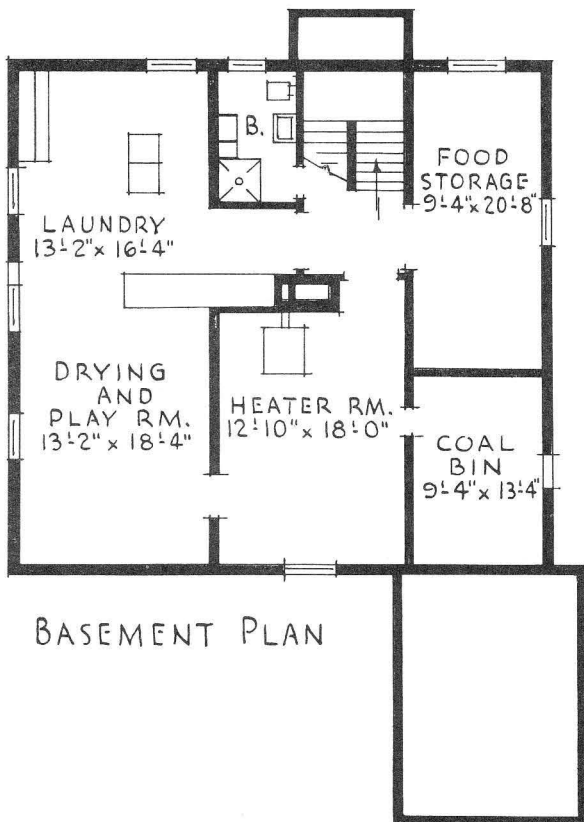


● ONE STORY HOUSE, 3 bedrooms, living room, dining room, kitchen.



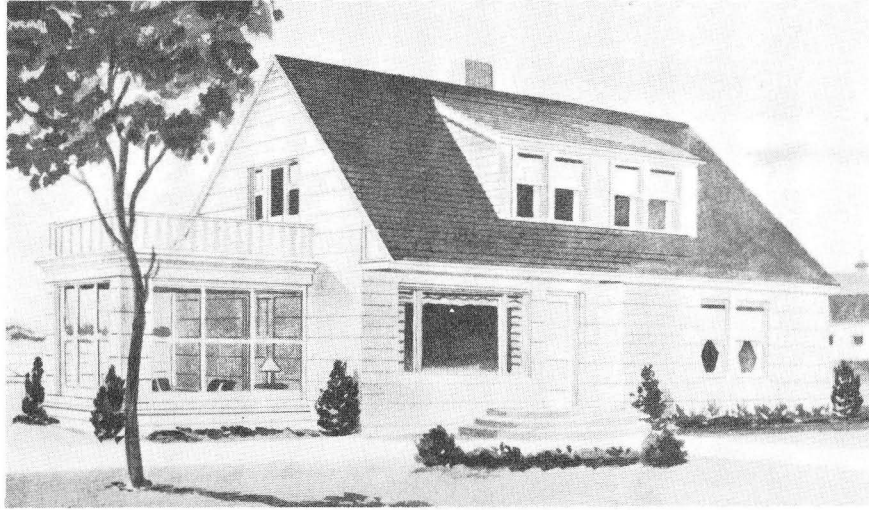
Plan No. 7027
6 Sheets

- Full basement with laundry, food storage and washroom.
- Central hall to back door.
- Large enclosed porch.
- Desirable front entrance.
- "U" shaped kitchen with limited eating area.
- Precast concrete joist floor.
- Floor area excluding porch, 1324 square feet.

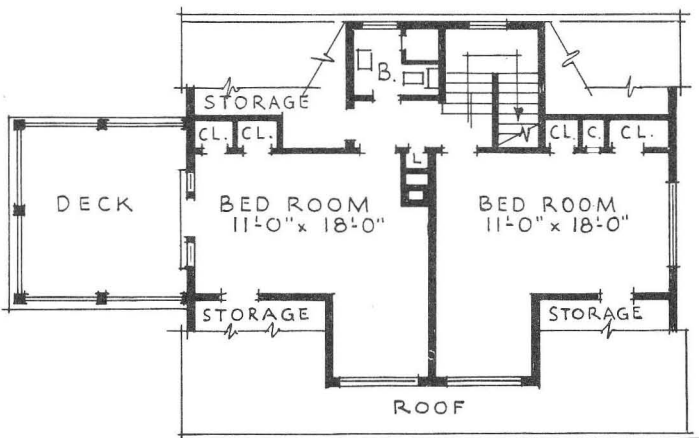


● **ONE AND ONE-HALF STORY HOUSE,**
3 bedrooms, utility room, kitchen, dining alcove, living room.

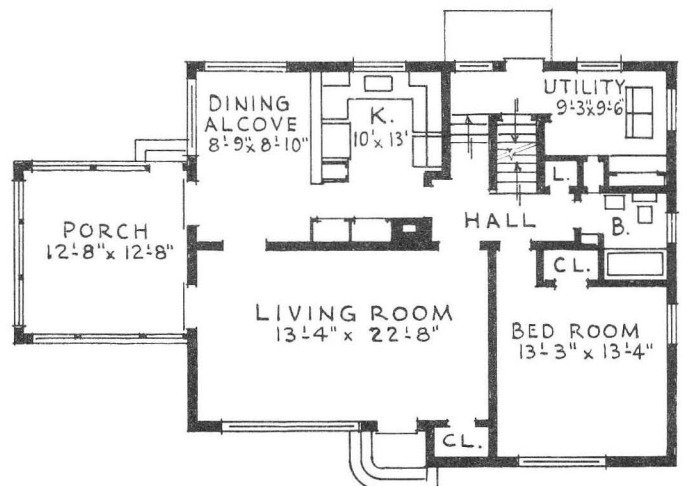
Plan No. 7028
 6 Sheets



- First floor bedroom.
- Central hall connecting all first floor rooms with back door.
- Bath on both floors; shower in basement.
- Large basement for food storage and furnace room.
- "U" shaped kitchen with dining alcove.
- Utility room at ground level.
- Adequate storage throughout house.
- Area of first and second floors, 1920 square feet.

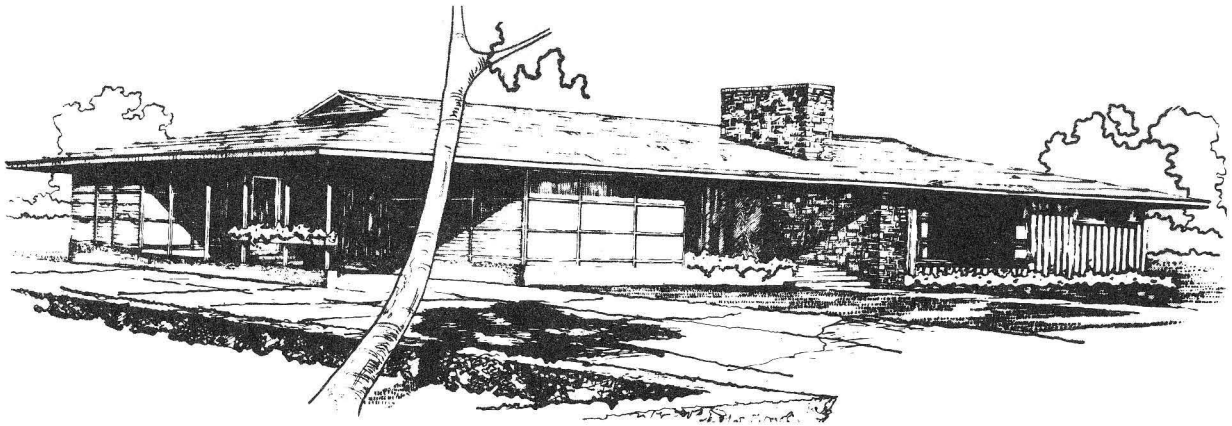


SECOND FLOOR PLAN



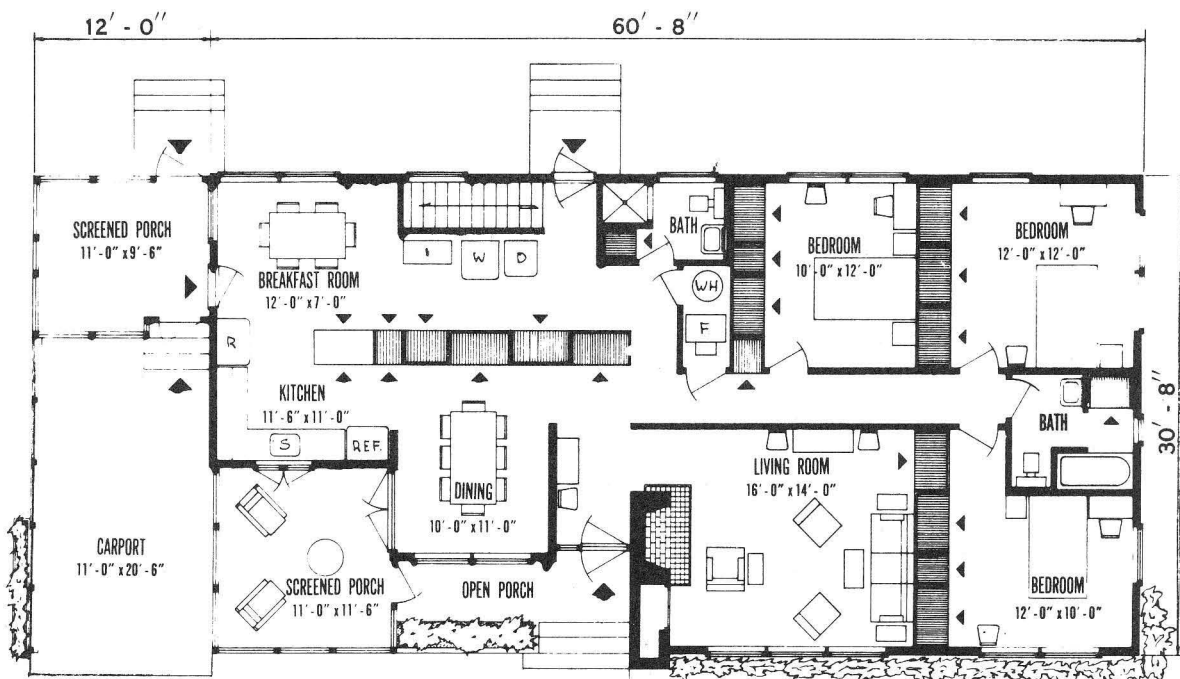
FIRST FLOOR PLAN

● **ONE STORY HOUSE (partial basement),
3 bedrooms, living room, dining room, kitchen.**



**Plan No. 7127
7 Sheets**

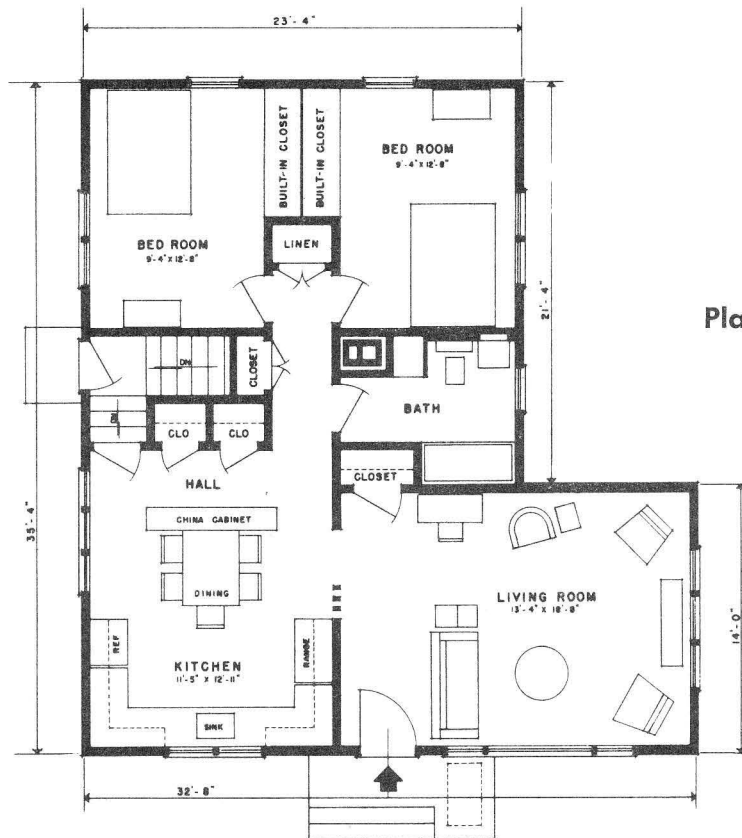
- Large kitchen with separate breakfast room.
- Dining room with storages.
- Abundant storage throughout house.
- All rooms open into a separate hall.
- Rear entrance near bathroom.
- Front vestibule with storage.
- Floor area including porches, 2115 square feet.



● ONE STORY HOUSE, 2 bedrooms, living room, kitchen, partial basement.



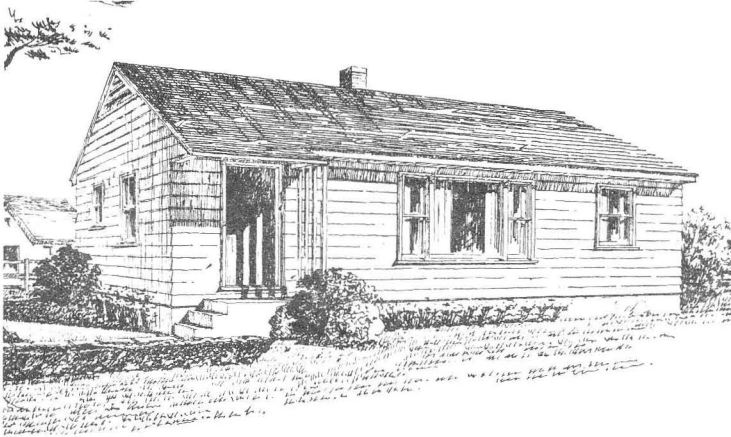
- Large kitchen with eating area.
- Front entrance directly into living room.
- Good storage throughout house.
- Space used efficiently.
- First floor area, 955 square feet.



Plan No. 7076
6 Sheets

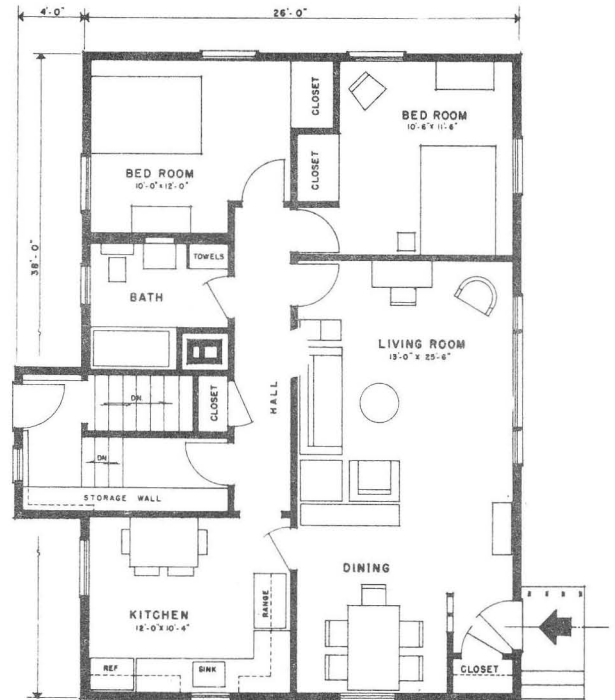
FIRST FLOOR PLAN

● ONE STORY HOUSE, 2 bedrooms, living room, kitchen.



Plan No. 7077
6 Sheets

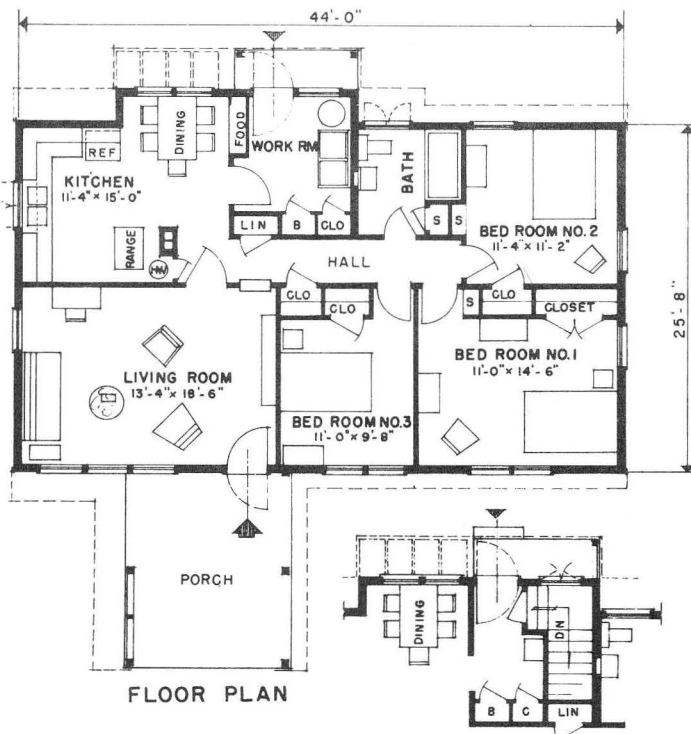
- Large living room with dining area.
- Coat storage at front entrance.
- Large kitchen with eating space.
- Central hall connects all rooms.
- Full basement.
- Rectangular plan for economical construction.
- First floor area, 1024 square feet.



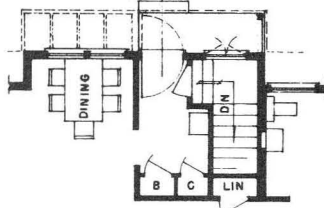
FIRST FLOOR PLAN

● ONE STORY HOUSE, 3 bedrooms, living room, kitchen, utility room.

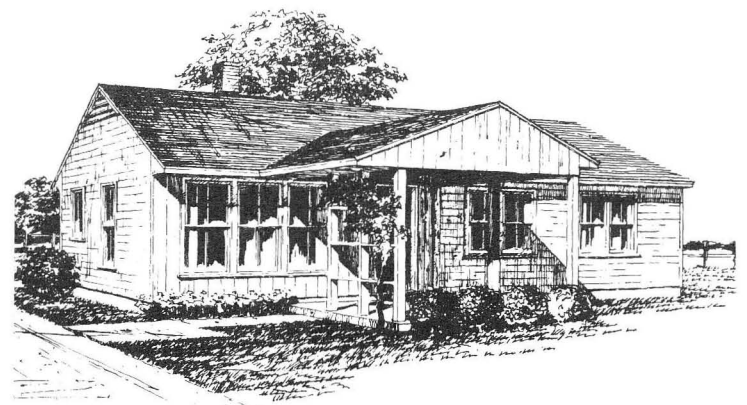
Plan No. 7084
3 Sheets



FLOOR PLAN

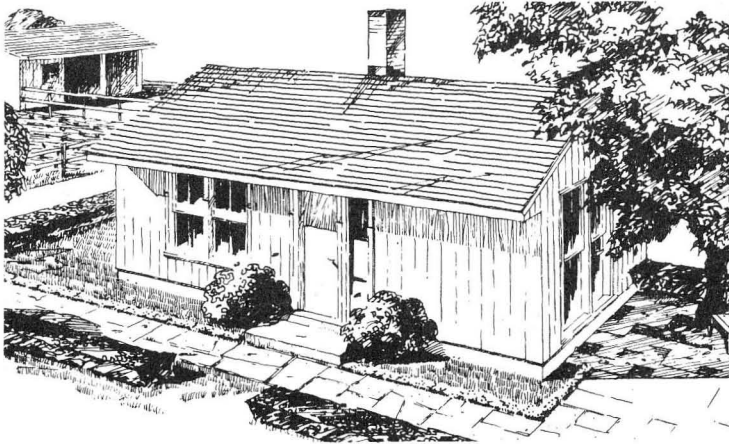


PLAN OF REAR ENTRANCE
OF HOUSE WITH BASEMENT.



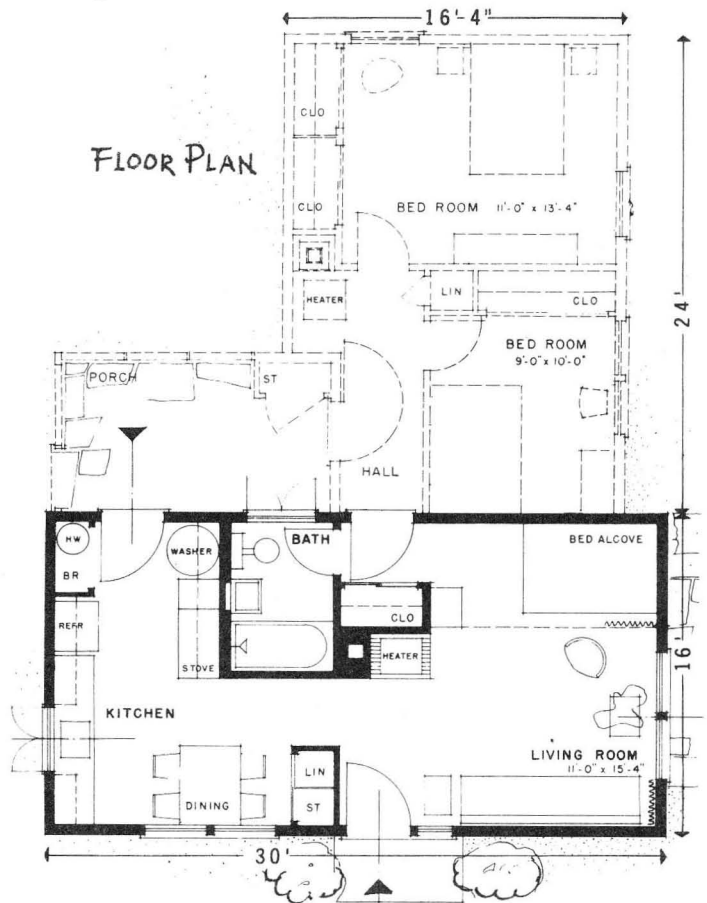
- Basement optional.
- Large kitchen with dining alcove.
- Rear entrance into utility room.
- Front entrance directly into living room.
- Central hall connects all rooms.
- First floor area excluding porch, 1171 square feet.

**ONE STORY EXPANSIBLE,
2 bedrooms, kitchen with dining area, living room, basementless.**

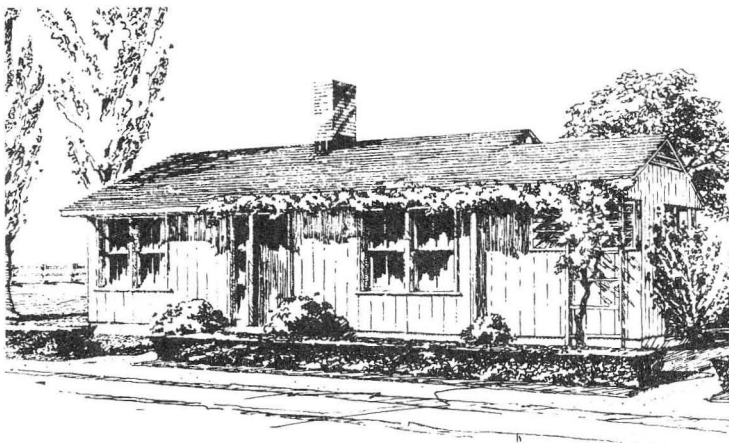


Plan No. 7049
11 Sheets

- Open planned home.
- Large kitchen with dining and utility areas.
- Excellent storage.
- Entrance directly into living room.
- Easily expanded basic unit.
- Area of completed house, 910 square feet.

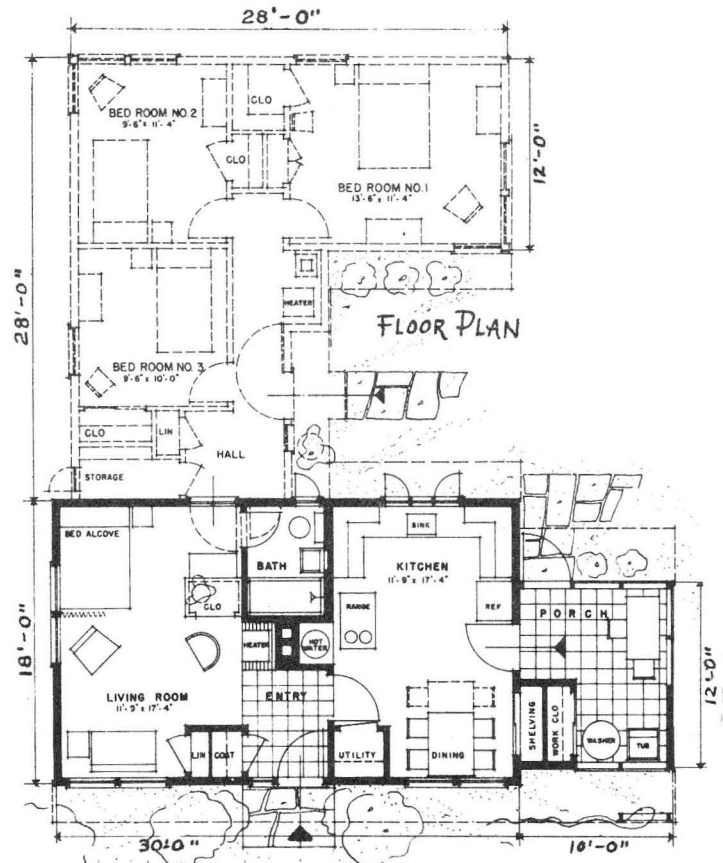


ONE STORY EXPANSIBLE, 3 bedrooms, living room, kitchen, enclosed porch.



Plan No. 7079
7 Sheets

- Large front entrance area with storage.
- Large kitchen with dining area.
- Laundry equipment in enclosed porch.
- Basic unit planned for young couple.
- Easily expanded.
- Floor area of completed house, 1230 square feet.

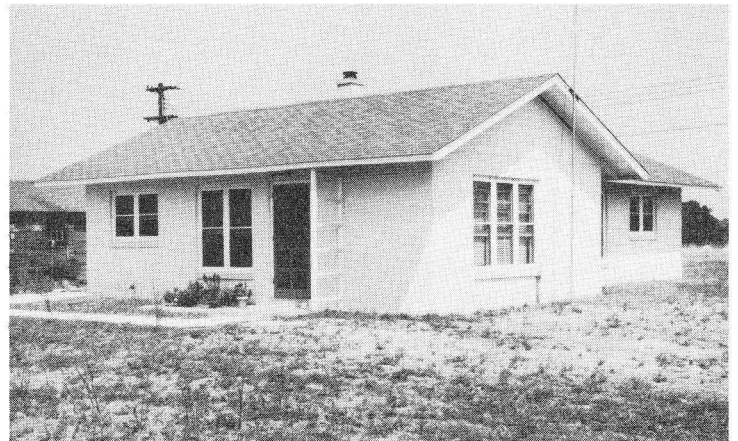
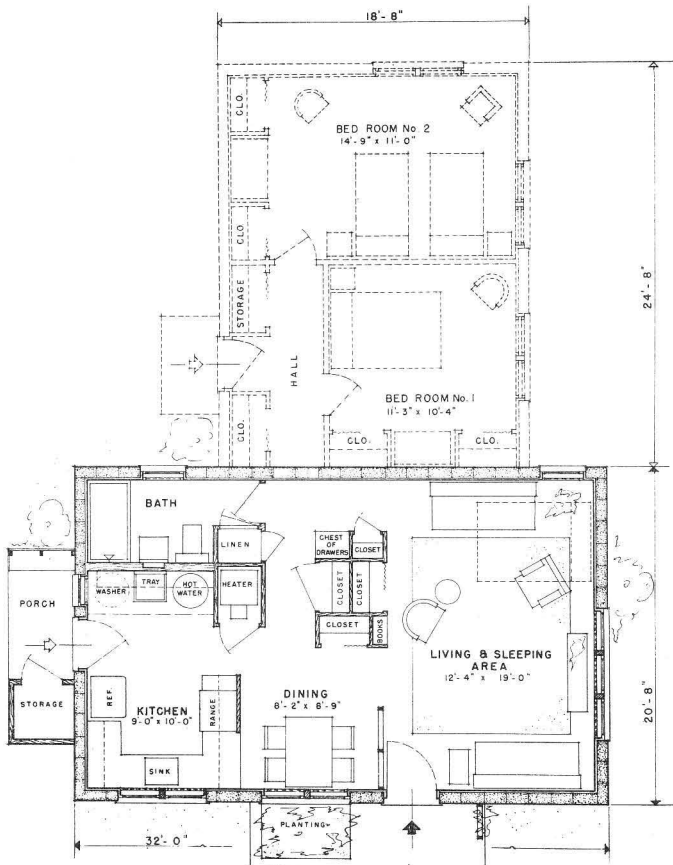
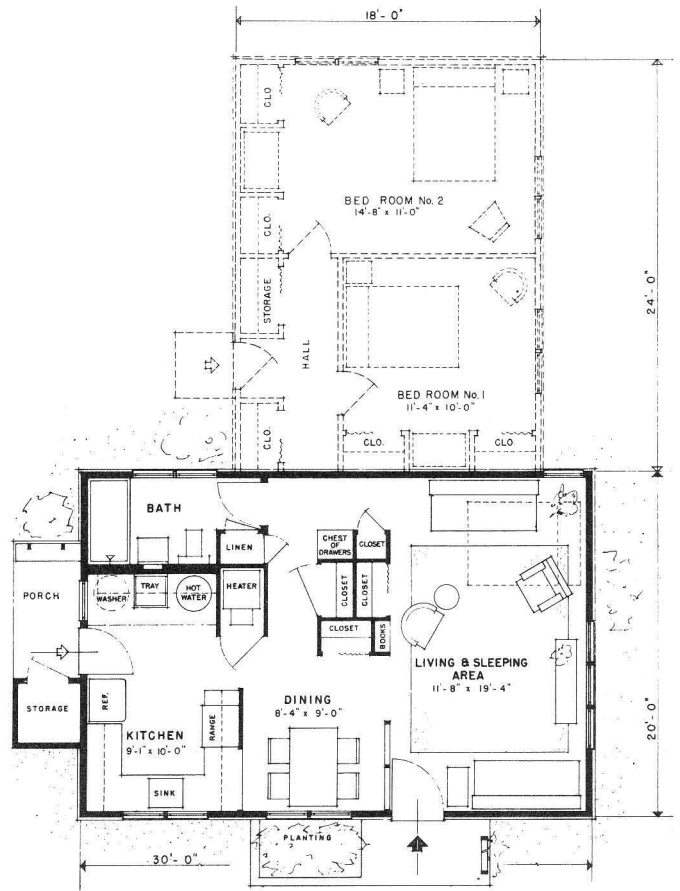


● **ONE STORY EXPANSIBLE, 7061 frame construction, 7062 masonry construction, two bedrooms, living room, dining kitchen, basementless.**



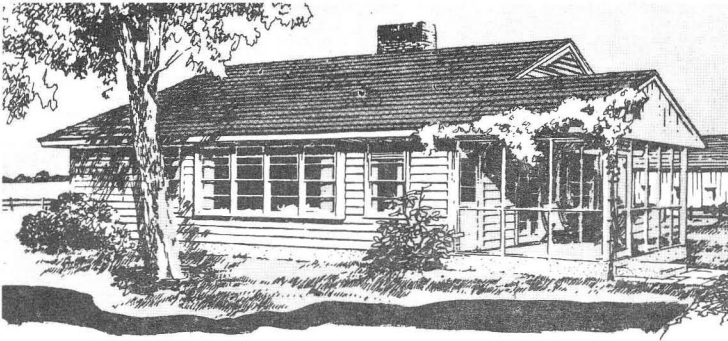
**Plan No. 7061 (Frame)
5 Sheets**

- Basic unit adequate for young couple.
- Easily expanded basic unit.
- Front entrance directly into living room.
- Open planned home.
- Excellent storage.
- Post and beam floor construction.
- Completed house excluding porches,
Frame, 1032 square feet;
Masonry, 1122 square feet.

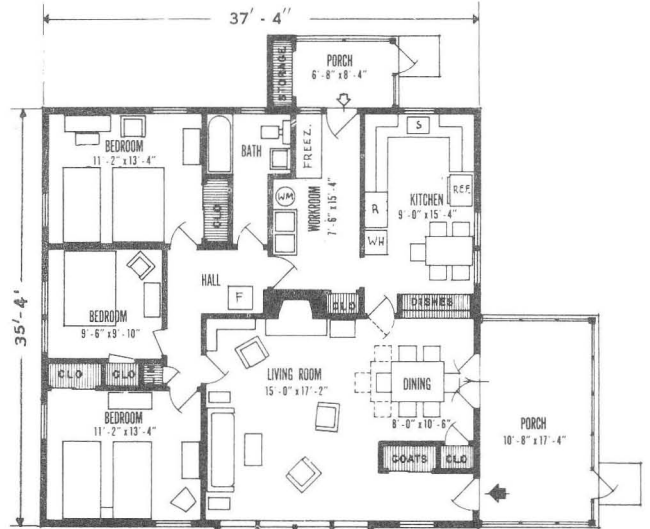


**Plan No. 7062 (Masonry)
5 Sheets**

● ONE STORY, basementless, 3 bedrooms, living room, kitchen, workroom.

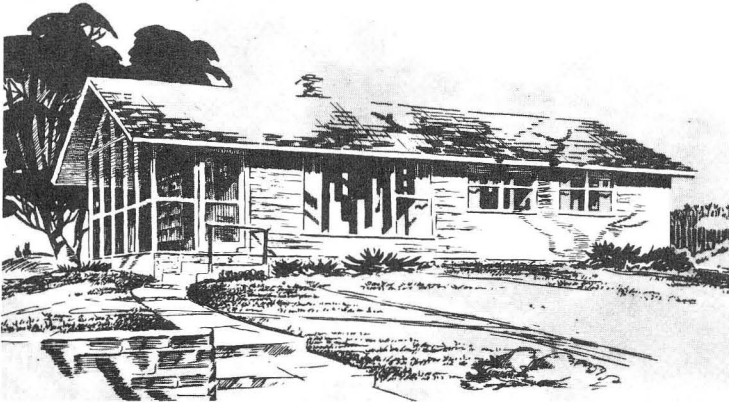


Plan No. 7060
11 Sheets

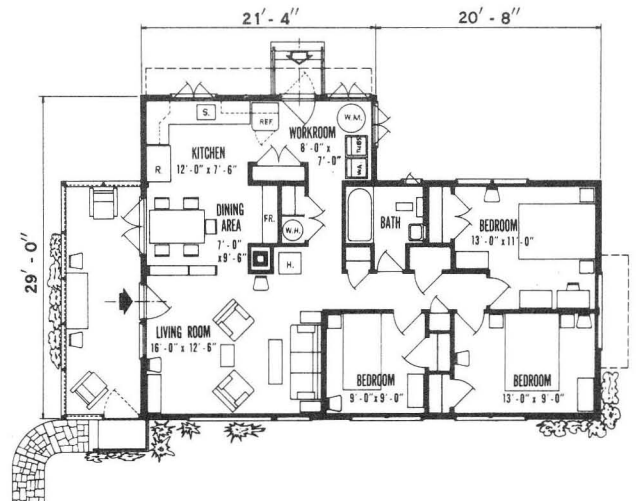


- Vestibule with closet at front entrance.
- Screened porch at front entrance.
- Living room with dining alcove.
- Truss roof design requires no bearing partitions.
- Floor area with porches, 1575 square feet.

● ONE STORY, basementless, 3 bedrooms, living room, kitchen.

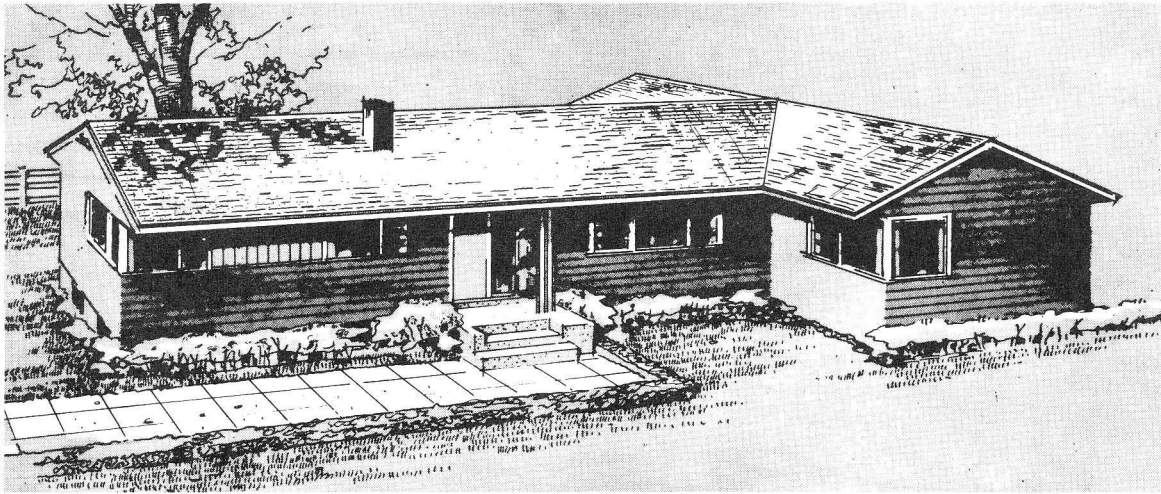


Plan No. 7098
3 Sheets



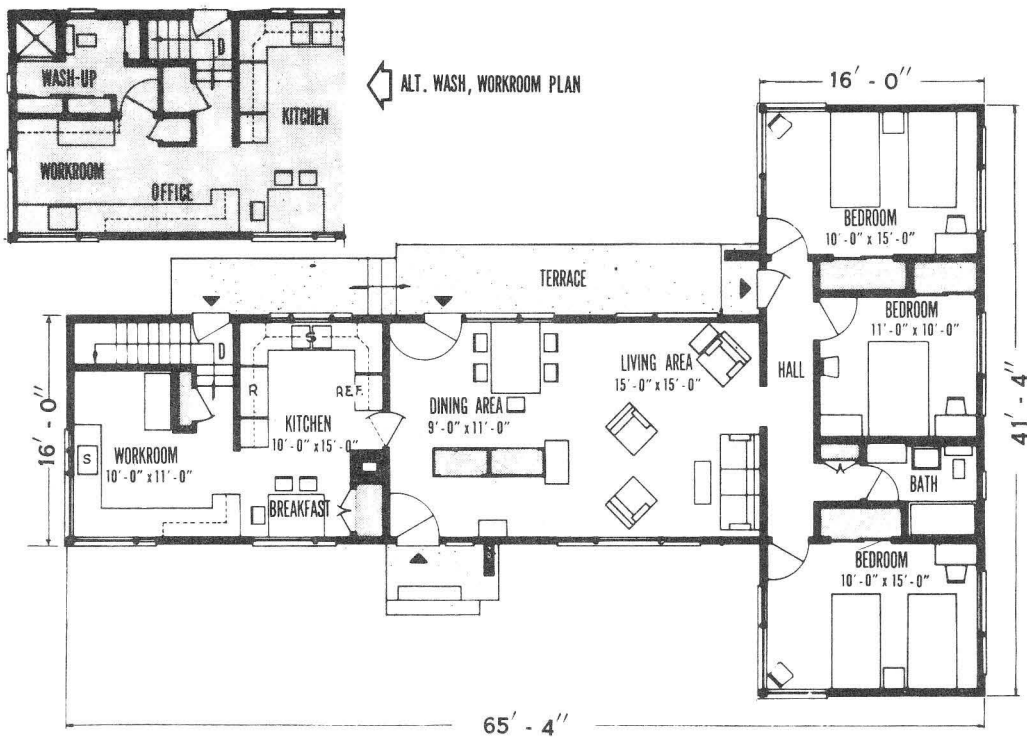
- Entrance directly into living room.
- Adequate storage throughout plan.
- Large kitchen with separate dining area.
- Central hall connects all rooms.
- Large screened porch.
- Floor area with porch, 1260 square feet.

● **ONE STORY HOUSE (partial basement),
3 bedrooms, living-dining area, kitchen, workroom.**

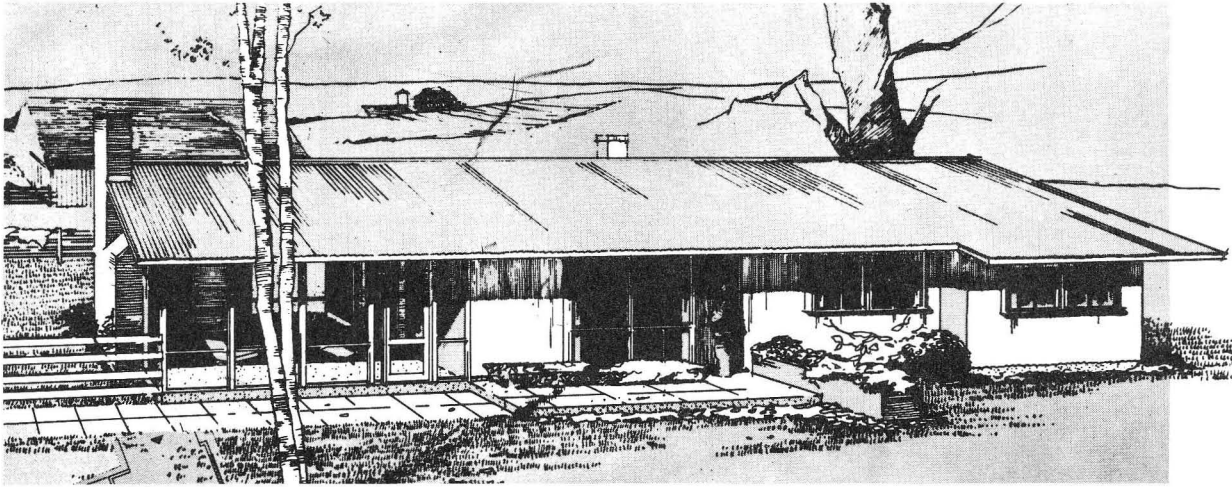


**Plan No. 7046
6 Sheets**

- Flexible plan has alternate arrangements for basic area units.
- Living room extends from front of house to rear.
- Open planned living-dining room with storage wall provides separate front entrance.
- Large kitchen with eating area.
- Area of first floor, 2240 square feet.

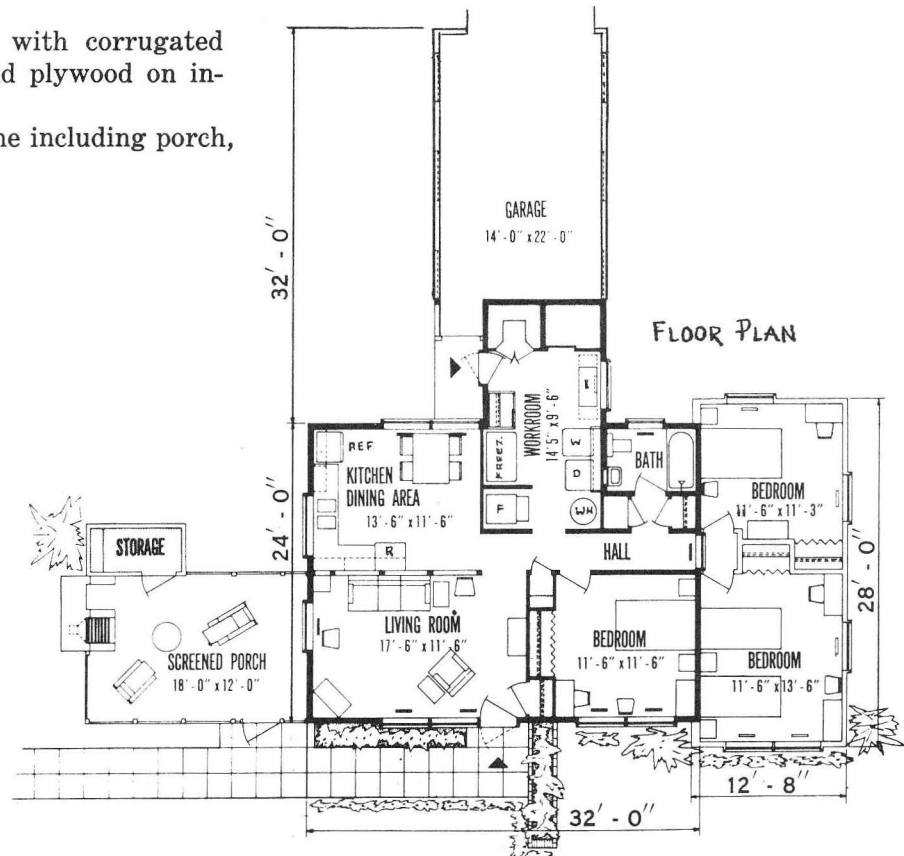


● ONE STORY EXPANSIBLE, 3 bedrooms, living room, kitchen.

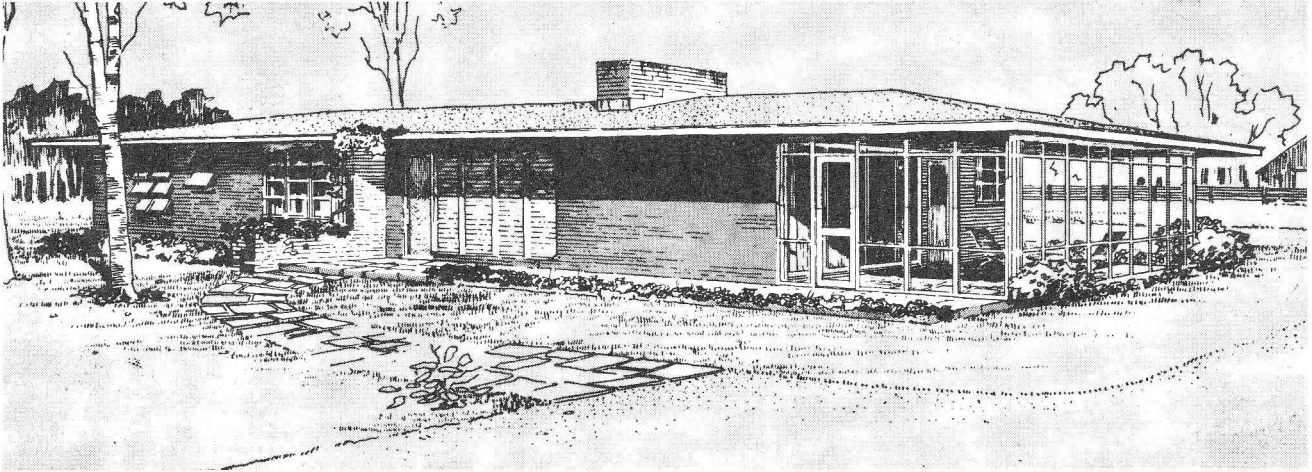


- One bedroom basic plan easily expanded to three bedrooms.
- Front entrance directly into living room.
- Large kitchen with dining area.
- Large screened porch off living room.
- Rear entrance into workroom with storage and clean-up area.
- Basement optional.
- Walls and roof covered with corrugated aluminum on outside and plywood on interior finish, optional.
- First floor expanded home including porch, 1473 square feet.

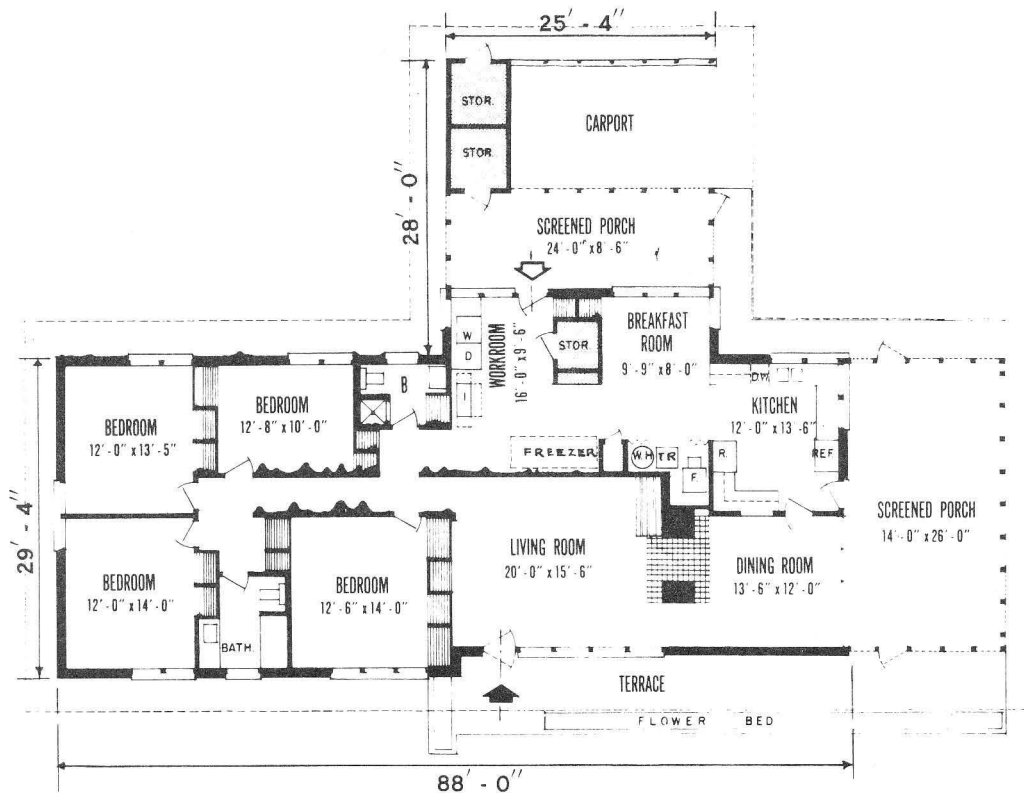
Plan No. 7130
8 Sheets



● ONE STORY HOUSE,
4 bedrooms, 2 bathrooms, living room, dining room, kitchen.

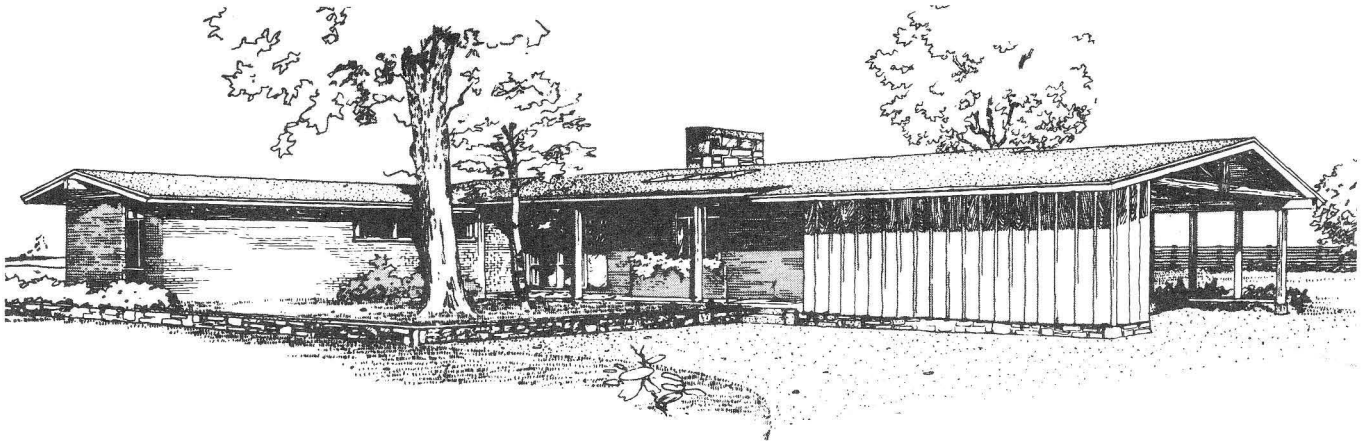


- Brick veneer on wood frame construction.
- Two-way fireplace in living room and dining room.
- Kitchen with separate breakfast nook.
- Screened porches off dining room and workroom.
- Abundant storages throughout house.
- Ceiling in living and dining room is open.
- Optional—full or partial basement.
- Floor area not including porches and carport, 2680 square feet.



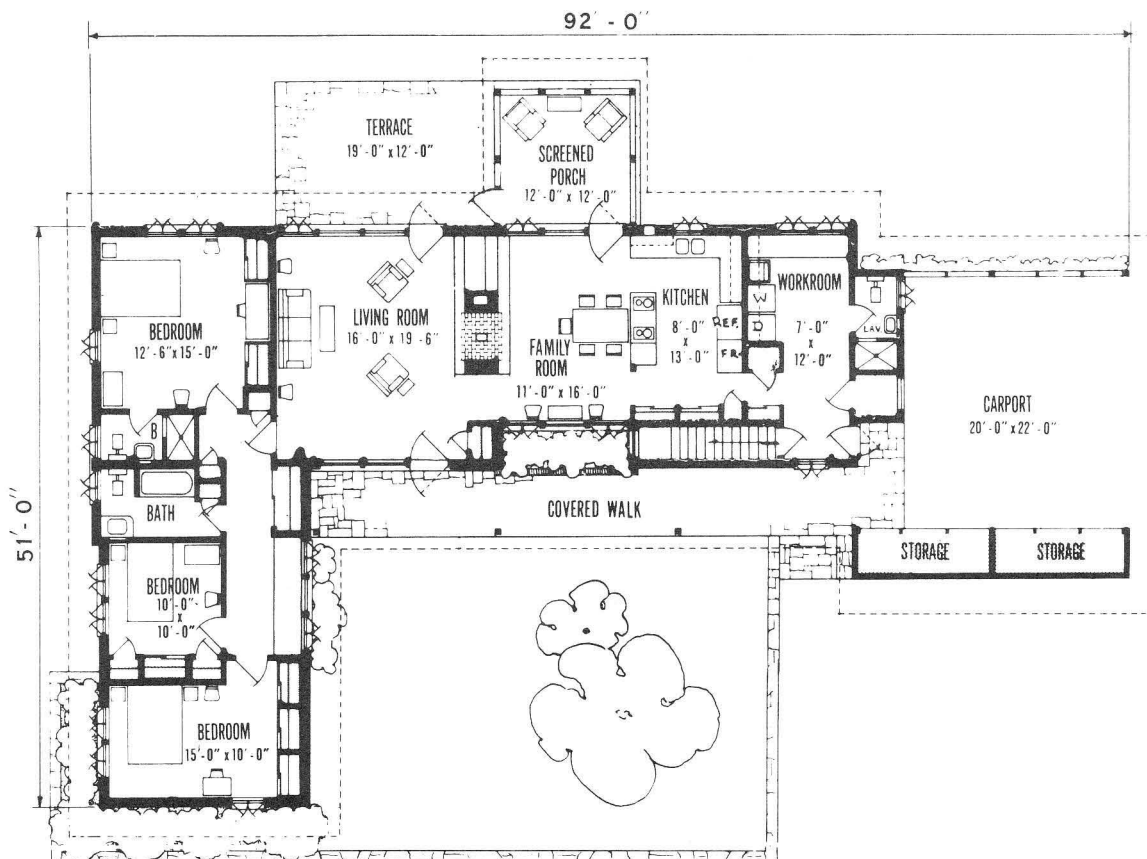
Plan No. 7129
11 Sheets

● **ONE STORY RANCH HOUSE (partial basement),
3 bedrooms, living room, family room, kitchen.**

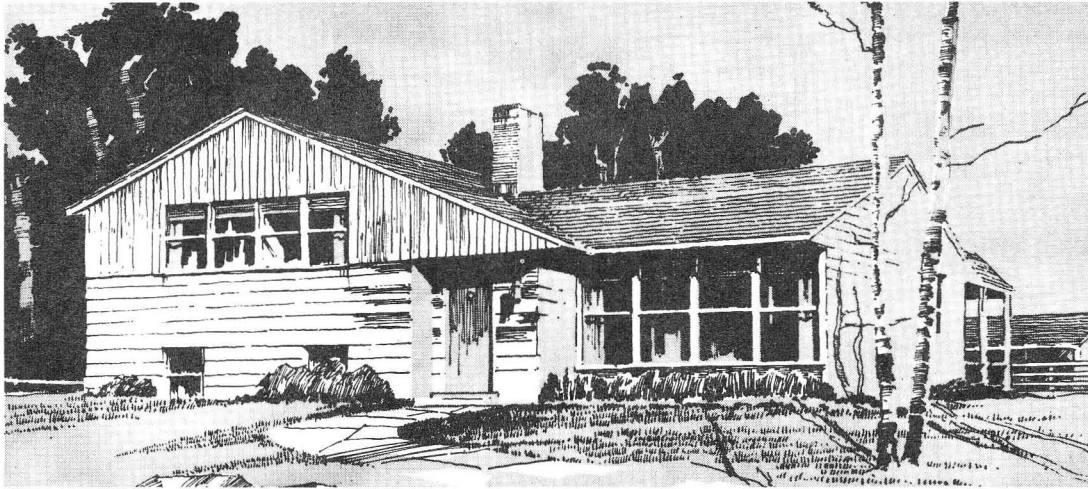


**Plan No. 7131
6 Sheets**

- Excellent storage throughout house.
- Living room opens to front and rear of home.
- Two-way fireplace in living room and family room.
- Clean-up area at rear entrance.
- Three full baths.
- First floor area not including porch, 2096 square feet.

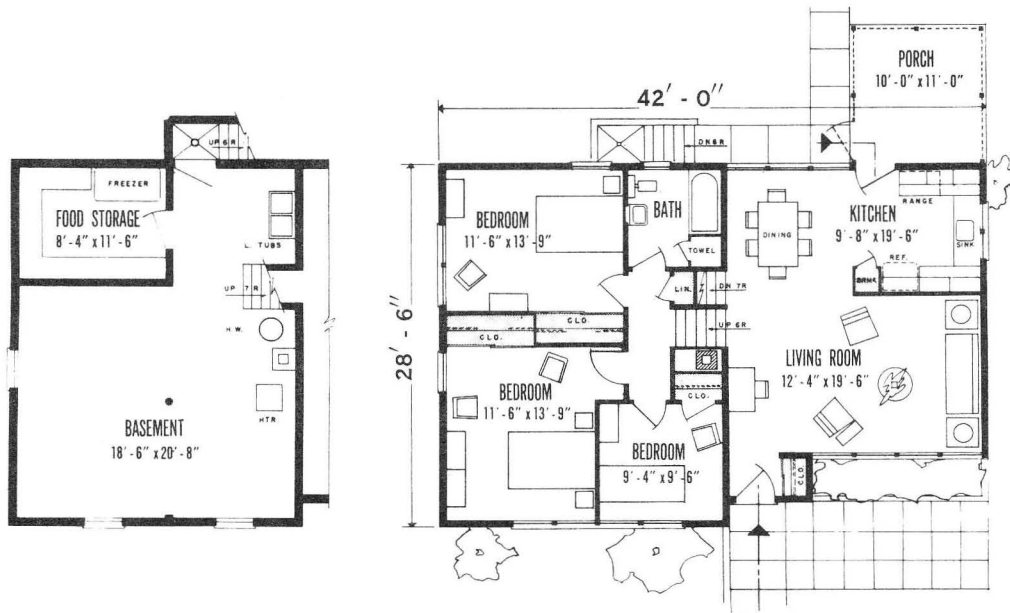


● TRI-LEVEL FARM HOUSE, 3 bedrooms, living room, kitchen.

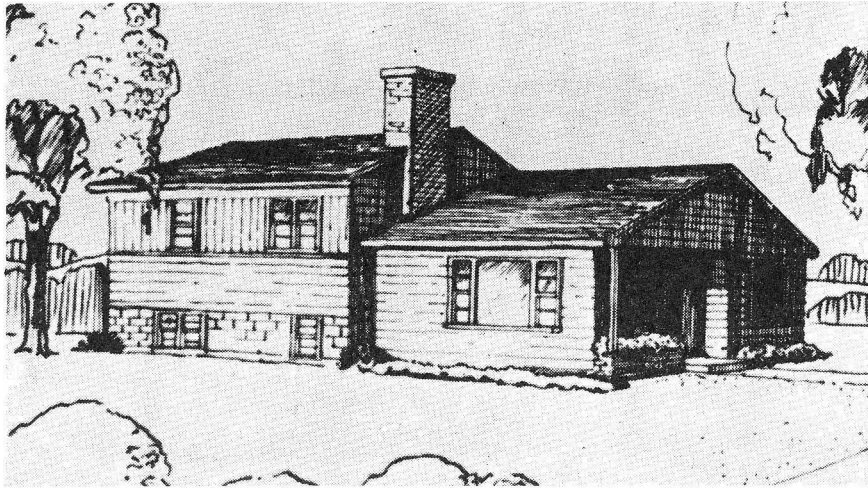


Plan No. 7096
4 Sheets

- Open planned living-kitchen-dining area.
- Closet at front entrance.
- Rear porch could be designed for work area or dining.
- Area of 3 levels including porch, 1832 square feet.



● TRI-LEVEL HOUSE, 3 bedrooms, living room, dining room, kitchen.



Plan No. 712-C1-41
3 Sheets

- Kitchen has limited eating area.
- Large rear entrance area with clean-up and storage space.
- Coat storage at both entrances.
- Good storage throughout house.
- Ground and upper level area, 1200 square feet.

