

COOPERATIVE EXTENSION SERVICE
MICHIGAN STATE UNIVERSITY

Family
**Vegetable
Garden**
Series

EXTENSION BULLETIN E-824(1)

USE WINTER MONTHS TO...

RAN AHEAD

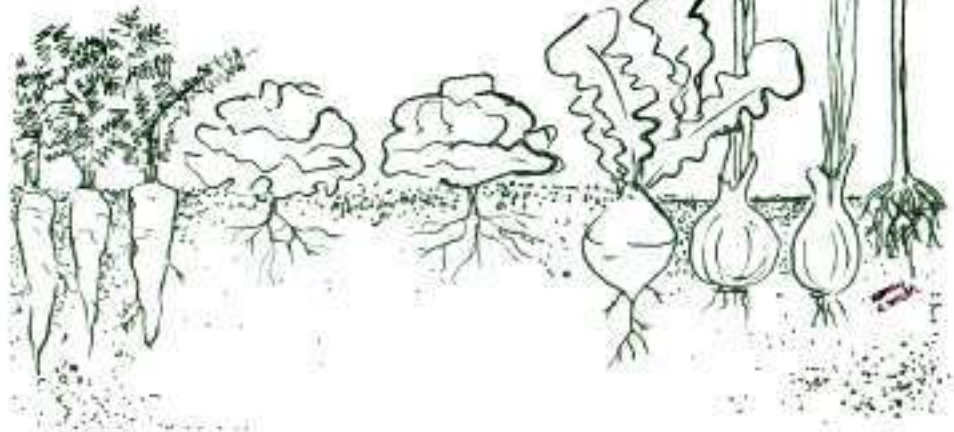
by nancy e smith and j. lee taylor
DEPT. OF HORTICULTURE

FUN, FOOD, BEAUTY.

THINK OF A LUSH GREEN PATCH OF LETTUCE AND COLLARDS, A LACY ROW OF CARROTS OR PLUMP RED TOMATOES AND PEPPERS WAITING TO BE PICKED. NO ONE IS LIKELY TO EAT BETTER THAN THE HOME GARDENER WHO HAS A WELL PLANNED AND CARED FOR GARDEN. A GARDEN ALSO PROVIDES WHOLESOME RECREATION FOR THE CITY, SUBURBAN OR COUNTRY FAMILY. AN EVENING IN THE GARDEN CAN BE RELAXING AFTER A LONG DAY AT WORK. YOUR "GREEN PATCH" WILL BRING YOU FUN, FOOD AND BEAUTY.

FOR A GOOD GARDEN

- CHOOSE VEGETABLES YOUR FAMILY LIKES
- BUY VARIETIES RECOMMENDED FOR MICHIGAN. (CONTACT YOUR COUNTY EXTENSION SERVICE OFFICE)
- PLANT AT THE RIGHT TIME
- USE FERTILIZER



START EARLY

BUYING SEED. EXPERIENCED GARDENERS BUY MOST OF THEIR SEED THROUGH SEED CATALOGUES. THEY OFFER MORE VARIETIES AND TELL YOU WHICH VARIETIES ARE BEST FOR CANNING, FREEZING OR EATING RAW.

FROST (TEMPERATURES OF 32°F) WILL NOT INJURE THESE CROPS. PLANT SEEDS OR TRANSPLANTS OUTSIDE IN APRIL.

COOL SEASON CROPS



We eat the roots, stems, leaves or very young flowers of most COOL SEASON CROPS

THESE CROPS WILL BE INJURED BY A FROST (32°F). PLANT THESE SEEDS OR TRANSPLANTS OUTSIDE IN MAY.

WARM SEASON CROPS



We eat the fruit of most WARM SEASON CROPS

JANUARY-FEBRUARY

Order seed catalogues

FEBRUARY-MARCH

Order seeds

MARCH-APRIL

Prepare the soil
As soon as it is dry enough

APRIL

Plant Cool Season Crops
check local planting dates

MAY

Plant Warm Season Crops
After danger of frost



WHERE TO PUT THE GARDEN

LOCATE THE GARDEN NEAR YOUR HOME SO YOU CAN WORK IN IT WHEN YOU HAVE A FEW MINUTES. IT IS EXCITING WHEN YOU ARE CLOSE ENOUGH TO WATCH IT GROW.

☺ PLANT TALL CROPS ON THE NORTH SIDE OF THE GARDEN SO THEY WON'T SHADE THE SHORTER VEGETABLES. ☹

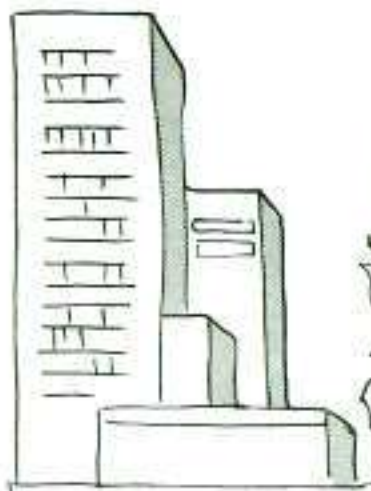
☺ SUNNY, LEVEL LAND IS BEST. ☺ BUT GENTLE SLOPES WILL DO. ☹ SOUTH FACING SLOPES ARE THE SUNNIEST. ☹

DON'T WORRY IF YOU DON'T HAVE MUCH SPACE. AN AREA AS SMALL AS A COMPACT CAR CAN BE MORE FUN AND FRUITFUL THAN A LARGE GARDEN SEVERAL BLOCKS OR MILES AWAY. PICK A SUNNY SPOT. IF YOU DON'T HAVE A YARD, USE YOUR IMAGINATION... TRY LETTUCE AND GREENS IN A FLOWER BOX OR TOMATOES AND PEPPERS IN POTS ON THE PORCH.

☹ DON'T PLANT ON STEEP BANKS. RAIN WILL WASH AWAY THE SOIL AND VEGETABLES. ☹

☹ NORTH FACING SLOPES ARE COLD AND SHADED. VEGETABLES WILL NOT GROW WELL HERE. ☹

☹ LOW AREAS ARE WET AND THE SOIL STAYS COLD. ☹



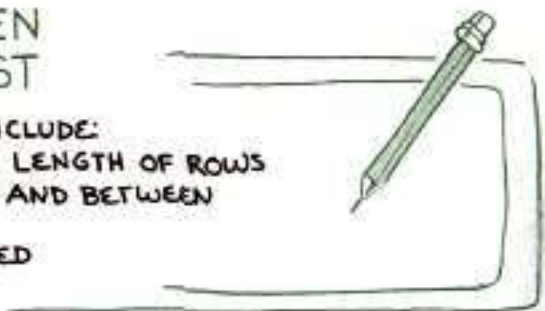
LOCATE NEAR A GOOD SUPPLY OF WATER ☺



PLANT YOUR GARDEN ON PAPER FIRST

YOUR PLAN SHOULD INCLUDE:

1. ARRANGEMENT OF CROPS, LENGTH OF ROWS
2. SPACING BETWEEN ROWS AND BETWEEN PLANTS IN ROWS
3. VARIETIES TO BE PLANTED
4. PLANTING DATES



HELPFUL HINTS



THESE VEGETABLES
PRODUCE A LOT IN A
SMALL SPACE

- | | |
|----------------------|--------------|
| TOMATO | TURNIP |
| RADISH | ONION (SETS) |
| LETTUCE | GREENS |
| BEANS (POLE OR SNAP) | |
| BUSH SQUASH | |



THESE VEGETABLES
NEED A VERY
LARGE SPACE
TO PRODUCE A LOT

- | | |
|-------------|-------|
| PEAS | MELON |
| POTATO | CORN |
| VINE SQUASH | |



YOUR VEGETABLES NEED PLENTY OF SUNSHINE. TOMATOES, PEPPERS, SQUASH AND OTHER 'FRUIT' CROPS MUST HAVE FULL SUN. ROOT CROPS LIKE BEETS AND CARROTS CAN BE GROWN IN LIGHT SHADE. LEAFY VEGETABLES LIKE LETTUCE AND COLLARDS WILL GROW IN MEDIUM SHADE.



KEYS
TO
SUCCESS

- START EARLY
- BUY RECOMMENDED VARIETIES
- USE FERTILIZER

All Michigan 4-H - Youth, Natural Resources and Public Policy, Family Living Education, Agriculture and Marketing educational programs and materials are available to all individuals on a non-discriminatory basis without regard to race, color, creed, or national origin.

Issued in furtherance of cooperative extension work in agriculture and home economics, acts of May 8, and June 30, 1914, in cooperation with the U.S. Department of Agriculture, Gordon E. Guver, Director, Cooperative Extension Service, Michigan State University, East Lansing, Michigan 48824.

1P-175-50M-UP