

# THE PRODUCTION MACHINE

"HIGH CAPACITY, ECONOMICAL, HIGH-FLOATATION"



## TURF BLAZER 1040

That's how this machine has been designed! The mammoth 104" appetite affords you 31% higher capacity than a standard 72" unit. With a 60" mower out front and two hydraulically operated wings, we have eliminated the application of long, troublesome belts and assured you of picture perfect flotation over berms and undulations.

Add to this a field tested, 4-cylinder water-cooled, 40 HP diesel engine in conjunction with hydro-static transmission and you have a machine which will maximize your return on cost of acre cut.

Contact your local HOWARD PRICE distributor for a demonstration on your turf.

Circle No. 220 on Reader Inquiry Card

Manufactured by

**HOWARD PRICE**  
**TURF EQUIPMENT**

18155 Edison Avenue  
Chesterfield, Mo. 63005



## FOR SALE

**LAWN MAINTENANCE BUSINESSES FOR SALE** located in Flint and Detroit area. Both are well-established and include all equipment and client lists. Terms available to qualified purchaser. Contact Associated Business Group, Inc., 313-687-7650. Ray Harris. 2/90

**LAWN CARE SPRAY TRUCK:** 1987 Ford F-350 Diesel XL package; Auxiliary Fuel tank; P.T.O. Hydro centrifugal pump 9203C; 600 Gallon Stainless steel tank; Electric hose reel; 10' steel bed. Large side box; G.P.I. flow meter; Backflow preventer valve; Pressure gauge; Dupont Imron paint throughout. Very low miles, well maintained. Call (201)337-0017 in New Jersey. Asking \$17,600. Optional Injection system for \$1,000. 2/90

**PIPE LOCATOR INEXPENSIVE!** Locates, traces underground drain, water pipe lines of clay, PVC, ABS, steel, cement. Finds sprinklers, valves, clogs. Bloch Company, Box 18058, Cleveland, Ohio 44118. (216)371-0979. TF

Jacobsen - E10 - 7 units, rebuilt mowers. Excellent condition, \$8,900.00. 3 gang Toro, good condition or will trade for Jac units for parts. \$750.00. (501)664-2136 or (501)776-3802. 2/90

Tree Spade: 32" Vermeer TS 32. Mounts on 3 point hitch tractor 40 H.P. or larger. Excellent condition. \$3500. Clemson Landscape Nurseries, PO Box 218, Central, SC 29630. (803)639-4505. 2/90

**ZOYSIA MEYERS Z-52 SOD OR SPRIGS. EXCELLENT QUALITY DELIVERED ANYWHERE AT REASONABLE PRICES. ALSO ROW PLANTING AVAILABLE. DOUBLE SPRINGS GRASS FARM, SEARCY, AR. 1-800-458-4756.** TF

**PORTABLE STUMP CUTTER - 14 or 16 H.P. Mag Kohler, 4 speed transaxle - 34 1/2" wide. Kinetic Stump Cutter, Inc. 1-800-422-9344.** 2/90

For Sale: New and Used Brouwer - Mowers - VACX - Fork Lifts - Harvesters - and full line of replacement parts. Contact Glenn or Ed Markham at 1-800-458-3644. 2/90

1986 Vermeer Tree Spade: 84 inch - mounted on 1977 Mack truck, 10 Wheeler, 44 Rears, 5 Speed Low-ho Transmission, good tires. Price \$48,000.00. Excellent condition. Call (508)897-7244 (MA). 2/90

**JACOBSEN TURF KING II:** 84" w/baskets. Like new, 170 hours. \$4,300. 717-648-2496. 2/90

**HYDROSEEDER** 1985 Finn T-150 1,500 gallon with hose reel mounted on a 1979 Ford LT8000 with a 500 gallon liquid fertilizer tank. Call (301)924-4445. 2/90

**HYDRO-MULCHERS AND STRAW BLOWERS** New and used. **JAMES LINCOLN CORPORATION**, 3220 S. Jupiter Rd., Garland, TX 75041. (214)840-2440, (800)527-2304. TF

**PAUL FLORENCE Turfgrass:** Quality seed for the Turf Professional. Elite Bluegrasses, Fine-Leaf Ryegrasses, and Turf-Type Tall Fescues. Custom mixing our specialty. Silva-Fiber mulch and supplies for hydro-seeders. Quality Elite Bluegrass Sod. Call us! (513)642-7487. 13600 Watkins Rd., Marysville, OH 43040. TF

Twelve Unit Martin House - Expandable to 18-24 or more-\$59.95 F.O.B. Dest. Milwaukee Pulp Products, Inc., P.O. Box 08345, Milw., WI 53208 - or call 1-800-645-7857. 2/90

**SPYDERS - New/Used/Rebuilt.** New Kohler engines, short blocks and a complete line of engines and Spyder replacement parts. New Style Nichols-Fairfield Torque Hub Kits, heavy duty Wilton Caster Kits, Remote Air Cleaner Kits, heavy duty Carriage Side Plates. We repair and rebuild hydraulic pumps and motors for your Spyder. Same day service. Call or Write: Mobile Lift Parts, Inc., 5402 Edgewood Rd., Crystal Lake, IL 60012. 815-455-7363; 1-800-397-7509. 4/90

**REINCO HYDROGRASSERS** and power mulchers in stock. Opdyke Inc. (Philadelphia Area) 215-721-4444. TF

**FOR SALE:** 1986 D-30 Princeton Piggy-Back Forklift with year old Kubota diesel engine - perfect condition. Seven Cities Sod, Inc., Davenport, Iowa. 319-391-1663. 3/90

For Sale due to illness: Established Garden Center, nursery and landscaping business, located centrally to State College and Altoona. For more information write R.D. 3 Box 381, Tyrone, PA 16686. 2/90

Finn Hydroseeders, Mulch Spreaders, Krimpers, Pit Burners, Fiber Mulch & Tackifiers. New & Used. Wolbert & Master, Inc., P.O. Box 292, White Marsh, MD 21162, 301-335-9300. TF

**FOR SALE:** 1986 Howard Price Hydro 180. Rebuilt Hydraulic and Electrical Systems. Many new parts and new paint. Low hours. **MUST SELL.** Asking \$11,000. (508)430-1533. 2/90

**LAWN SEED:** Wholesale. Full line of top quality grasses. Improved bluegrass varieties, tall fescues and fine bladed ryegrasses. We specialize in custom mixing. Olgier Seed Company, 89 Hanna Parkway, Akron, OH 44319. Call collect (216)724-1266. TF

Big Roll Type Sod Harvester. Nearly new. Includes Laying Unit, 3 pt Carrier. Loading Adaptor, 100 Steel Cores. \$5,200, negotiable. Wetmore's Nursery & Sod Farms, RR #6, Frederickton, N.B. Canada E3B 4X7. 506-472-3357. 2/90

## MISCELLANEOUS

### LANDSCAPE TRAINING VIDEOS

Intermediate mower maintenance field and shop repair; efficient/profitable mowing techniques; professional shrub trimming, plant installation, basic landscape plan drawing, etc. **ENGLISH AND SPANISH.** Write for free brochure.

C.D. Anderson Landscape Videos  
515 Ogden Avenue  
Downers Grove, IL 60515  
1-800-937-0399

## WANTED

**WANTED:** Jacobson Fairway Gang Mowers. Clean later models preferred. Call 414-895-2441. 2/90

**STRAW BLOWER,** trailer mount, with adhesive attachment. **HYDRO SEEDER,** 2,000 gallon or larger, with or without truck. Late models preferred. Call 705-256-8928 or leave a message at 705-949-9400. 3/90

**WANTED:** Jacobson blitzer or fairways or Toros - 5, 7, or 9 gang. Any condition - priced accordingly. (313)653-5695. 2/90

Wanted: Hesstons, 180, 200's and Toro-GMT's 200's. Any condition. Dick Trevarthan's Landscaping Co. (815)469-5903 or (815)469-5238. 2/90

## USED EQUIPMENT

**BUCKET TRUCKS,** Straight Stick, Corner Mount and Knuckle Boom Cranes. Brush Chippers - New Morbark Disc Type, New Woodchuck Drum Type. Best prices anywhere. Used Chippers - Asplundh, Woodchuck, etc. 2 to 8 usually in stock. Sprayers, Dumps, Stakes, Log Loaders, Crew Cab Chip Box Dumps, Railroad Trucks, 50 in stock. Sold as is or reconditioned. Opdyke's, Hatfield (Philadelphia Area) 215-721-4444. TF

**NEW and USED EQUIPMENT--Asplundh, Hi Ranger and Lift-all forestry bucket trucks, Chip-mower wood chippers.** Mirk, Inc., (216)669-3567, (216)669-3562, 7629 Chippewa Road, Orrville, Ohio 44667. TF

**BUCKET TRUCK:** Hi Ranger 65', 57', 50'. Sky-workers with chip boxes. Asplundh bucket trucks with chip boxes. Asplundh brush chippers. Bean 55 gal. sprayers. Pete Mainka Enterprises, 633 Cecilia Drive, Pewaukee, WI 53072. 414-691-4306. TF

## Infometrics

Infometrics is the full-service development, market research and analysis division of Edgell Communications, Inc.

### What can Infometrics do for you?

- Customized editorial, advertising and marketing research studies
- Telemarketing
- Publication support services
- List preparation for studies
- Data collection by telephone or mail
- Full service tabulation of study results
- Analysis of study results and report preparation

For more information on how **INFOMETRICS'** team of seasoned professionals can serve you, call (218) 723-9330.



# Mitsubishi Mighty Mits. Mighty Tough.

Introducing the Mighty Mits. Rugged, dependable multi-purpose vehicles that cover a variety of your general work needs.

They're efficient. Quiet. And loaded with features:

- A low-maintenance, 3-cylinder water-cooled engine with balance shaft for reduced vibration and noise.
- A payload capacity of up to 1750 pounds.
- Quick and precise rack and pinion steering.
- A compact 12½' turning radius—for easy maneuverability.

- A raised cab roof with generous headroom for increased roominess and comfort.

Choose from Flo-Thru, Full-Door and Tilt Bed models. With 2- and 4-wheel drive options.

The Mighty Mits. They're high. They're mighty. And best of all, they're Mitsubishi.



Industrial Vehicle Division,  
6400 W. Katella Ave., Cypress, CA 90630-0064  
(714) 372-6000 (800) FON-MITS

Circle No. 146 on Reader Inquiry Card



# ADVERTISER INDEX

NO.	ADVERTISER	PAGE NO.	NO.	ADVERTISER	PAGE NO.	NO.	ADVERTISER	PAGE NO.
101	Adikes, Inc., J.A.	110	221	Gravely International, Inc.	81		Commission	21
	Aquatrols Corp. of America	60-61	280	Howard Price Turf Equipment	89	151	PBI Gordon Corp.	41
102	Barebo, Inc.	125	220	Howard Price Turf Equipment	121	152	PBI Gordon Corp.	82-83
105	Ciba Geigy Corp./Banner	85	129	ICI Americas, Inc.	105	153	Precision Laboratories, Inc.	106
107	Ciba Geigy Corp./Pennant	74-75	130	Jacobsen Div. of Textron	53	154	Precision Laboratories, Inc.	28
103	Ciba Geigy Corp./Subdue	38-39	132	KLM Bio-Systems, Inc.	86	155	Promark Laboratories, Inc.	88
104	Ciba Geigy Corp./Subdue	38-39	131	Kem Enterprises, Inc.	112	215	RGB Laboratories, Inc.	109
106	Ciba Geigy Corp./Triumph	74-75	133	Lebanon Chemical Corp.	CV3	157	Reemay Inc.	101
108	Cushman	51	134	Lebanon Chemical Corp./Team	14	158	Rhone Poulenc Ag Co./Alette	97
109	Deere and Co., John	22-23	136	Lesco, Inc.	37	159	Rhone Poulenc Ag Co./Chipco	48-49
115	Distributors Own Turf Supply	102-103	135	Lofts Seeds, Inc.	CV4	160	Sandoz Crop Protection Corp.	55
110	Ditch Witch	59	290	Lombardini USA, Inc.	43	161	Scag Power Equipment	30-31
114	DowElanco/Cutless	107	138	Mazda Motors of America	95	162	Seirra Chemical Co.	111
126	DowElanco/4 Products	24-25	139	Milliken Chemical Co.	45	216	Sauer Sundstrand	73
111	DowElanco/Gallery	6-7	140	Milwaukee Sewerage Commission	79	164	Tee 2 Green Corp.	CV2
113	DowElanco/Reemay	90-91	146	Mitsubishi Motor Sales of America, Inc.	123	166	Toro Co.	2-3
117	DowElanco/Rubigan	29	145	Mobay Corp.	56-57	167	Toro Irrigation Div. of Toro Co.	35
118	DowElanco/Rubigan	29	141	Monsanto Co.	13	214	Turf Seed, Inc.	5
112	DowElanco/Surflan (Regional)	99	142	Monsanto Co.	15	168	Walker Manufacturing Co.	108
116	DowElanco/XL	93	143	Monsanto Co.	17	169	Williamette Seed Co.	47
119	Excel Industries, Inc.	73	144	Monsanto Co.	19-20	170	Woods Division of Hesston Corp.	26-27
120	Exmark Manufacturing Co.	104	147	Nor Am Chemical Co.	115	170	Yazoo Manufacturing Co.	113
121	Fermenta ASC Corp.	87	148	Olathe Manufacturing, Inc.	124			
123	Fuerst Brothers, Inc.	12	149	Olathe Manufacturing, Inc.	72			
124	Grasshopper Co.	36	150	Oregon Tall Fescue				

This index is provided as an additional service. The publisher does not assume any liability for errors or omissions.

**Olathe** Hydraulic Feed!

**Model 986 Brush Chipper**



Handles up to 12" diameter material. Features a 42" cutter drum, 360° directional chute, and offset feed table for operator safety. Available with gas or diesel options.

Call Your Nearby Olathe/Toro Dist. For Demo!

100 Industrial Parkway  
Industrial Airport, KS 66031  
**800-255-6438**  
913-782-4396

**Olathe** Stop Double Handling!

**Model 54HL Self-Propelled Turf Sweeper**



Large Area sweeper cleans 5 ft. swath of grass clippings, leaves, thatch and other debris, then hydraulically dumps at 5½ ft.

Call Your Nearby Olathe/Toro Dist. For Demo!

100 Industrial Parkway  
Industrial Airport, KS 66031  
**800-255-6438**  
913-782-4396

**Olathe** Big 4' Swath!

**Model 83/93 Slit Seeder/Thatcher**



For heavy-duty jobs. Slit seeds 48" swath on 3" centers. Variable seed feed control.

Call Your Nearby Olathe/Toro Dist. For Demo!

100 Industrial Parkway  
Industrial Airport, KS 66031  
**800-255-6438**  
913-782-4396

Circle No. 148 on Reader Inquiry Card



# It's

# What's Below The Surface That Counts!



## High Density Polyethylene Float:

Filled with US Coast Guard approved closed cell foam. Always floats level, stays afloat even if punctured or damaged. S/S fasteners provide longer life.

## 4 Pole/High Torque Motor:

Designed specifically for aeration. Runs longer and cooler at 1725 RPM. Easy to maintain. Rebuildable, not disposable.

## Lubricating Oil:

Developed by a major oil company for lubricating and very low dielectric capabilities. Acts as heat transfer.

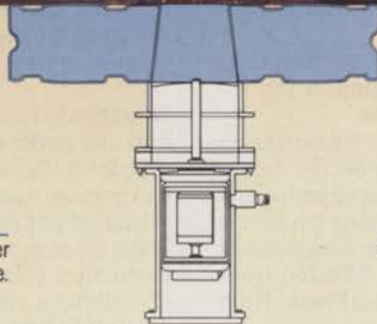
## Power Control Center:

Exclusive Westinghouse motor controls provide maximum built-in protection. UL, CSA and ETL approved. Standard equipment, not an option.



## Safety Tested:

All Otterbine aerators are safety tested and approved by ETL.



## High Volume, Low Pressure Impeller:

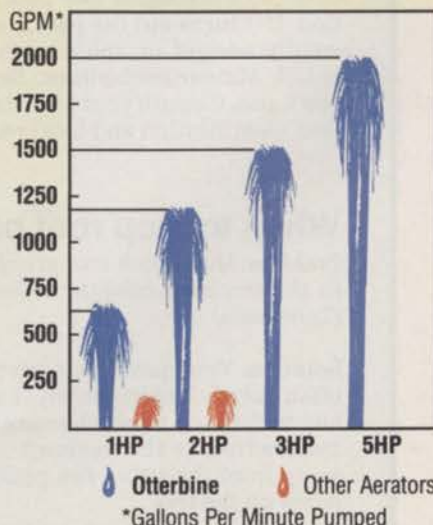
Designed to aerate and move large volumes of water. Precision pitched Stainless Steel affords increased efficiency.

## Plug-Type Underwater Connector:

Designed for Otterbine. Easy connect and disconnect makes installation and service simple.

## Strong Distributor and Service Network:

Over 130 distributors nationwide with 35 service centers staffed by factory trained personnel.



Circle No. 102 on Reader Inquiry Card

## BAREBO, INC.

P.O. Box 217, R.D. 2 • Emmaus, PA 18049 • Phone (215) 965-6018 • Fax (215) 965-6050

# PROBLEM MANAGEMENT

by Balakrishna Rao, Ph.D.

## Controlling woolly aphids

**Problem:** Can you suggest a method of controlling woolly aphids in fir trees, other than using diazinon or malathion? My success rate has been only fair with these pesticides. Would a systemic give better results? (Canada)

**Solution:** The woolly aphids in fir trees to which you are referring are probably balsam woolly adelgids, *Adelges piceae*. This is not a true aphid, but is a member of a family closely related to aphids, *Adehgidae*. It is a serious, destructive sucking insect of true firs (*Abies* sp.) in the United States and Canada. It does not attack Douglas fir, *Pseudotsuga menziesii*, a tree that is not a true fir, and it does minimal damage to Noble fir, *Abies piceae*.

An understanding of the insect biology and damage it causes might be helpful in the management of this pest. The balsam woolly aphid may have two or three generations per year. This adelgid may be found on all parts of the bark from the trunk to the twigs. Reports indicate that the entire population of this insect consists of females. The adults are wingless and purplish to black when the wax is removed. They remain attached to the tree with their long penetrating mouthparts.

The eggs hatch into tiny crawlers that move around. They finally settle down and insert their long sucking mouthparts while wax ribbons are selected from glands along the side and lower back of the crawler after feeding for some time. Later the entire body will be covered with white woolly material.

Affected plants show "gouting of the terminal portions of twigs" due to insect feeding. If the infestation is severe it can kill the plants.

The balsam woolly adelgid is protected during its entire existence under the swellings on the twigs. Therefore, it is difficult to manage using chemicals. It might also explain why you are having problems managing with diazinon or malathion. Since direct control is difficult, remove and burn affected trees during the winter to prevent the outbreak from spreading, if possible.

According to Dr. Douglas Caldwell, our staff entomologist, multiple applications of Sevin might be helpful in managing this pest in a landscape situation. If it turns out the pest is some other species of woolly adelgid or aphid such as the balsam twig aphid, *Mindarus sabietinus*, Sevin or Orthene may work also. Consult your Ministry of Environment for pest identification and local recommendations.

## When to stop root pruning

**Problem:** How much root pruning can a mature tree in the treelawn tolerate before failure or decline? (Tennessee)

**Solution:** Your question is interesting and is one I am often asked. Unfortunately, I am not familiar with any formula or research concerning root pruning of mature trees in the treelawn. Of course, the farther away from the trunk the pruning is done, the less stress on the tree.

Several different factors such as tree species, tree vigor and vitality, soil type, extent of root injury and cultural practices before and after root pruning can influence tree tolerance or decline. Trees may show varying degrees of recovery as a result of soil disturbance, root pruning and compaction, which changes the soil environment around the plants.

Plants weakened by the above factors can be susceptible to insect, disease or other abiotic disorders. In addition, the reduced root structure may subject the trees to wind throw.

In spite of these drawbacks, sometimes root pruning of established trees is unavoidable or becomes necessary because of road or sidewalk installation. In this type of situation, I have observed cases where the trees to be root pruned were fertilized with controlled-release fertilizer containing "low burn" nitrogen well in advance of the operation. The objective was to simulate the development of absorbing roots and improve plant health. These trees appeared healthy without any crown symptoms two years after root pruning and the installation of the road. Therefore, if the job is done with due consideration to the plant's overall health, there might be less stress and perhaps faster recovery can be expected.

## Info needed on pH adjusting

**Problem:** Do you have a formula for adjusting water pH above 8 to neutral prior to mixing with pesticides? (South Carolina)

**Solution:** In reviewing our literature, I was unable to find any pertinent information concerning any specific formula for adjusting water pH above 8 to neutral prior to mixing with pesticides. Although there is limited published data concerning alkaline hydrolysis of organophosphate and half-life of these pesticides, I am not familiar with any publication describing a standard mixing formula to lower the pH unit to a desired level.

It would be very handy and useful in our industry to have this information. I hope some of the manufacturing companies of buffering agents and/or other researchers might supply the answer to your question by contacting me. In the meantime, your best approach would be to contact some buffering agent manufacturers.

A number of commercially available products on the market that might be useful for lowering the pH, including: Buffer-X (Kalo-Lab), Nutrient Buffer Spray (Ortho), Spray-Aide (Miller), Sorba-Spray (Leffingwell), Unite (Hopkins), phosphoric acid (Morrall Chemical Co.) and MAP (monoammonium phosphate) (Dysart Co.).

LM



Balakrishna Rao is Manager of Technical Resources for the Davey Tree Co., Kent, Ohio.

Questions should be mailed to Problem Management, LANDSCAPE MANAGEMENT, 7500 Old Oak Boulevard, Cleveland, OH 44130. Please allow 2-3 months for an answer to appear in the magazine.





*That sandtrap beside the 7th hole goes on for another two hundred miles. And the only water hazard is that it hasn't rained in a month. What makes you so sure you can handle a turf test this tough?*

**Lebanon**  
TOTAL TURF CARE

A division of Lebanon Chemical Corporation