

Gator can carry payloads from 11,360 to 35,700 pounds with 40 degree articulation joints, which permit 12 degree oscillation for stability with a turning radius of less than 26 feet.

Write 714 on free information card

Sod cutters, which manually clamp onto either backhoe or loader buckets, quickly cut sod to a uniform thickness and slice it into easily handled strips. Two models, 27 and 40,



U.S. Patent 4049060

made by Guest Industries, Inc., cut 27 and 40 inches wide, respectively. Mounting clamps are movable to avoid bucket teeth. The lower cutting assembly (slides and blade) is free to rotate about the upper support assembly, so that it can follow ground contour and also be unaffected by changes in bucket angle.

Write 706 on reader service card

Woven plastic tarpaulins can solve outdoor storage and shipping problems and can also be used for work shelters, scaffolding enclosures, and divider curtains. This flat-tape polyolefin has a 2-mil extruded coating on both sides of the 10 by 10 count closed-weave, which makes it com-



pletely waterproof and resistant to delamination. They are lightweight and flexible yet have more than 725 pounds of rip strength per square foot. Tarpaulins are available in a variety of stock sizes and colors with fire retardant options from Allen Systems Inc.

Write 711 on free information card

Hold/Gro, a combination of knitted yarns interwoven with strips of biodegradable papers, protects the soil

until vegetation is firmly established. It shields soil from damaging rainfall and acts as a mulch material. Its yarns serve as a temporary root structure. The material is light enough for two men to install. Gulf States Paper Corp. makes it for use in a wide variety of applications and locations.

Write 710 on free information card

Multipurpose broadcast spreader will quickly and accurately distribute pelleted or granular fertilizers, herbicides, insecticides, and field and grass seed. A 6-point calibrated scale shutter adjusts the rate of material; operator easily sets rate of flow by size of the material. A self-agitator assures even flow. Adjusting rudders in the discharge opening determines the direction of broadcast and saves waste of spread material. Simple structure eliminates possible breakdown.

Spreader is 9¼ inches by 16¾ inches by 16 inches high; it weighs



4½ pounds. It has a hopper capacity of one bushel and a spread width of 20 feet. All exposed parts are made of stainless steel or non-breakable scratchless polyethylene materials to prevent corrosion. Warren's Turf Nursery is distributing it.

Write 708 on reader service card

Dedoes Industries, Inc. makes a hand-operated sand plow for easy attachment to the Easy Rider. The rugged plow effectively moves sand and levels cart paths.

Write 707 on reader service card



Model 5210 C

For both Volume and Pressure

Use Hypro series 5200 Big Twin piston pumps.

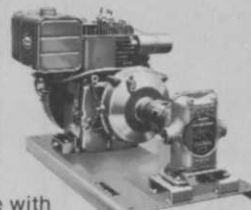
Here's a rugged two-cylinder piston pump that will deliver up to 10 gpm at 400 psi (600 rpm) for tree spraying, area spraying, fogging, or termite pretreating.

Handles many kinds of weed and pest control chemicals including wettable powder suspensions.

Available with solid shaft or with hollow shaft for direct tractor, truck, or jeep PTO mounting.

FEATURES:

- Leather or impregnated fabric piston cups.
- Heavy duty ball bearings.
- Suction & discharge ports tapped ¾" NPT.



Also available with gas engine and mounting base.

Hypro
A DIVISION OF LEAR SIEGLER, INC.

347 Fifth Avenue NW, St. Paul, Minnesota 55112

Write 109 on reader service card

Versatile SKY-WORKER fills the bill from tree-trimming to hot line work



Why? Because Sky-Worker can prove cost-savings up to 50% through utilization of its built-in sturdy features and superior maneuverability.

Platform stays level under all conditions - dual controls operate unit from work platform or vehicle deck - Fail-safe hydraulic system, combined with optional heat-exchanger requires little warm-up time. Lower boom on Model 1035 moves through overhead arc of 135° degrees - 45 degrees past vertical - horizontal rotation is 400 degrees, 40 degrees beyond full circle.

See how Sky-Worker fits into your maintenance and trouble-shooting work plan. Write for FREE catalog, on your letterhead please.



CORRECT MANUFACTURING CORPORATION

London Road Extension
Delaware, Ohio 43015
614-363-1951

Write 150 on reader service card

Products from page 71



Adjustable width seeder-spreader applies granulated or drilled fertilizers, lime, sand, or soil for topdressing on golf courses. It gives a thorough coverage, continuous and accurately metered from start to finish, even on hilly fairways. A special key lets the driver adjust spreading width from 20 to 45 feet. Rounded corners keep material from piling up and make it easy to wash out. Models come in hopper loads of 400 to 2,400 pounds from Vicon.

Write 720 on reader service card

The Gandy 30-foot spreader/applicator broadcasts two granular materials simultaneously on 200 acres a day. The 3,000-pound capacity spreader hoppers



and 600-pound capacity optional tandem chemical hoppers that extend time between refills.

Three models are available: 1030A with 1½-inch openings spaced 3¾ inches apart; 1030B with 1½-inch openings spaced 6¾ inches apart; and 1030C with 1-inch openings spaced 6 inches apart. Spreader and chemical hopper bottoms are die cut as mated pairs and never separated so openings are always uniform at all settings.

Write 721 on reader service card

Brillion Iron Works offers 68-inch Pulvi-Mulchers to crush, harrow, and condition soil in one pass to make a clod-free seedbed that is firm but not compacted. Loose mulch on top slows evaporation. Seed is planted at a uniform depth, in contact with moisture for good germination.

Large diameter roller wheels pull easily. Machine comes with 16¼-inch notched rollers that form pockets to trap moisture or 16½ crowfoot rollers that leave a slightly more open seedbed. Company offers many options to accompany equipment.

Write 713 on reader service card

Put the **LAWN GENIE**[®] to work...



and **3** wishes come true.

WISH #1 "I wish I had a tough pick-up mower that would mow and vacuum all in one pass.

WISH #2 "I wish that same pick-up mower would work year 'round thatching, verti-cutting, cleaning up, mowing, sweeping leaves and mulching."

WISH #3 "I sure wish I could change from mowing to thatching blades in less than an hour—with no tools."

IT ISN'T MAGIC! IT'S THE LAWN GENIE.

The one and only tough pick-up mower with patented spring-loaded blades that change in seconds.

For more information, contact the distributor nearest you....

Adams Equipment, Inc.
2205 E. Joppa Road
Baltimore, MD 21234
301-668-0500

Adams Equipment, Inc.
Box 1085, Blair Station
8001 Newell Street
Silver Spring, MD 20910
301-585-1322

Central South Turf
4425 Poplar Level Road
Louisville, KY 40213
502-459-2140/2144

Central South Turf Dist., Inc.
2837 Logan Street
Nashville, TN 37211
615-832-7725

Chicago Toro Turf-Irrigation, Inc.
911 Hill Top Drive
Itasca, IL 60143
312-773-5555

Richmond Power & Eq. Co., Inc.
1904 N. Hamilton Street
Richmond, VA 23230
804-355-7831

E.J. Smith & Sons Company
4250 Golf Acres Drive
Post Office Box 668887
Charlotte, NC 28266
704-394-3361

Storr Tractor Company
Post Office Box T
1750 Goldbach Avenue
Ronkonkoma, Long Island, NY 11779
201-722-9830

Storr Tractor Company
3191 Route 22 East
Somerville, NJ 08876
201-722-9830

Goldthwaite's of Texas
1401 Foch
Fort Worth, TX 76107
817-332-1521
(Dallas - Houston - San Antonio)

Grassland Eq. & Irrigation Corp.
892-898 Troy-Schenectady Road
Latham, NY 12110
518-785-5841

Hector Turf & Garden, Inc.
110 N.E. 179th Street
Post Office Box 693544
Miami, FL 33169
305-652-4470

Lawn & Garden Supply
2222 N. 27th Avenue
Phoenix, AZ 85009
602-278-8585

Lawn & Garden Supply
5455 South Nogales Highway
Tucson, AZ 85706
602-294-3177

Taylor Pearson & Carson
3525 Cornett Road
Vancouver, British Columbia,
Canada V5M 2H4
604-433-2481

Wislar & Company, Inc.
4505 Mills Place, S.W.
Atlanta, GA 30336
404-691-4801

Wislar & Company, Inc.
133 W. Oxmoor Road, Suite 231
Homewood, AL 35209
205-942-7888

Orange Turf Supply
11528 Martens River Circle
Fountain Valley, CA 92708
714-957-1262



LAWN GENIE[®]
THE PROFESSIONAL'S CHOICE

A Product Of...Mathews Company, P.O. Box 70, Crystal Lake, Illinois 60014

Write 149 on reader service card

73

CLASSIFIEDS



Cut mowing costs down to size. EXCEL HUSTLER 261 runs only 63" wide, mows a 60" swath.

Why haul extra machines or pay extra hours to mow between trees, markers, and the like? One EXCEL HUSTLER 261 with new 3-way deck set for mulch or rear discharge is only 3" wider overall than its 60" cut! Convert deck to side discharge in moments, without special tools.



The Mower is EXCEL-easy to operate. Dual hydros work only half as hard, yet direct *instant pure motion* to each drive wheel. A light touch on twin hand levers controls both speed and steering. Belt drive runs straight from engine to mowing deck mounted on the same floating platform. Short wheel base for smooth cut. Tractor comes with 3-way deck.

And More: Edger, Catcher/ Compactor, and Trailer optional. Factory-trained service, genuine EXCEL parts from your EXCEL Distributor. Write for his name and free literature. Or call toll-free (800) 835-3260. In Kansas or Canada call collect (316) 327-4911. EXCEL HUSTLER Turf & Grounds Equipment is built right by Excel Industries, Inc., Box 727, Hesston, Kansas 67062.

GSA: GS-07S-04916 HUD: OPH (CO)m-2930

Mower and More, the choice of the pros.

EXCEL HUSTLER

Turf & Grounds Equipment

Write 132 on reader service card

CLASSIFIED CLOSING DATES:

October issue closes September 4
November issue closes October 8
December issue closes October 30

When answering ads where box number only is given, please address as follows: Box number, Weeds Trees and Turf, Dorothy Lowe, Box 6951, Cleveland, Ohio 44101.

Rates: All classifications 65¢ per word. Box number, \$1. All classified ads must be accompanied by cash or money order covering full payment. Mail ad copy to: Dorothy Lowe, Weeds, Trees & Turf, P.O. Box 6951, Cleveland, Ohio 44101.

USED EQUIPMENT

HI-RANGER 54' and other aerial buckets. 2 Asplundh brush chippers, Prentice hyd. loader, chipper truck, John Bean 20 g.p.m. sprayer, 4 & 9 ton tag-along trailer. Allied Enterprises, Inc., W204 N11509 Golden-dale Rd., Germantown, Wi. 53022. Phone 414 255-6161.

HI-RANGERS AERIAL BASKETS 65', 57', 53'. Skyworkers aerial baskets 65', 50', 40'. Vermeer stump cutter 1560, 6. Vermeer tree spade 66, TS 44. Asplundh bucket and brush chippers. Bean sprayer, 9 ton trailer. Parkway Tree Service, 12026 W. Cherry, Wauwatosa, Wisc. 53226. 414 257-1555.

FOR SALE: 78 inch Big John tree mover, serial 32 in good condition, original owner. Trees, Inc. 517 627-9155.

NETSETTER "ROBARK", like new, used on 40 acres. P.O. Box I, Sumner, WA 98390. 206 825-2403.

BRUSH CHIPPERS, used Bean sprayers, Model 10 Vermeer stumpers, Hydro-Axis and bucket trucks. Lease or for sale. Large inventory available. Call or write P. C. Gould Sales Company, Plains Road, Essex, Conn. 06426. 203 767-1636.

MUST SELL—1979 750 gallon spray truck, compartmentalized tank, 100 G.P.M. pump, electric hose reel, like new, \$12,000.00 or assume lease. Phone 216 951-5295.

FOR SALE AS A UNIT. 1972 Chev. chipper trucks with steel dump box. 350 engine, 2-speed and powersteering. 20,000 miles. One owner and 1975 Asplundh Whisper chipper. 16 inch, 300, 6 cylinder, Ford engine, low hours. \$14,000.00.—1970 Vermeer stump cutter model 2460, low hours. \$7,500.00.—1973 Vermeer stump cutter model 630, low hours. \$4,200.00.—1974 Elliot, 70 ft. basket truck on C65, Chev. trucks 23,000 miles with extra basket to reach 81 ft. \$36,000.00. All equipment is in excellent condition, as I have retired. Call or write Robbins Tree Service, P.O. Box 2116, East Peoria, Il. 61611. Phone 309 699-7920.

LATE 1974 SKYWORKER, 52'; 2 hydraulic limb lopper chain saws, one lopper, mounted on 1974 International Loadstar 1600 1½ ton; 14 cubic yard hydraulic dump box under aerial boom (special order from Skyworker); built in tool boxes; Micro-Lever Lock all-wheel brake, 33,200 miles with 1974 Fitchburg chipper, 12", 749 hours, excellent condition, mechanical and appearance. Call 515 265-4485 day, 515 265-3375 night.

FOR SALE: Three spray trucks, 1976 and 1977 Chevy. C-60's, completely equipped with 1,200 gallon steel tank, mechanical agitation, Bean 20-20 pump, Hannay electric reel, hose, etc. Complete units, excellent condition, ready for immediate use. Will sell separate or special combined price. Phone 502 897-5201 day or 502 896-0879 nights.

FOR SALE: Elgin 81 sweeper \$850. 18' Ryan w/roll Ryder \$1450. 7 gang Roseman \$1450. 73 Chev. 4x4 w/plow control \$1450. 10" Parmona 5A mounted pump \$1800. Sod by acre. 414 326-5267.

SPRAYER, 1979 Bean Turf Model 1010T, 150 gallon stainless. 500 psi, 10 GPM, flotation tires, like new, \$700 below cost. 712 623-9372, Rand Wilson, Box 56, Red Oak, IA 51566.

SIX LOCKE MOWERS with grass catchers. 8 h.p. Briggs & Stratton, 30 inch blade. Excellent condition. Tom Cardi, 133-16 129 St., So. Ozone Park, N.Y. 11420. 212 529-0791.

BOWIE HYDROSEEDER — 3000 gallon mounted on 73 GMC 7500 tandem. Low hours, 15,736 miles. Excellent condition. \$36,000. 404 448-5030.

STUMP CUTTER, VERMEER 1560, very good condition. Sheehan Tree Serv., 1944 Ridge Rd., W., Rochester, N.Y. 14626. 716 225-1850.

'79 ASPLUNDH CHIPPER, '79 Chev. ¾ ton, 4x4, 1560 Vermeer stump remover. Call 312 232-9122 (Chuck).

SEEDS

SOD QUALITY Seeds: Adelphi, Glade, Cheri, Nugget, Merion, Fylking, Majestic, Baron & Touchdown bluegrasses, also fine fescues, Manhattan ryegrass. Custom mixing available. Michigan State Seed, Grand Ledge, Michigan 48837. Phone 517 627-2164.

LAWN SEED. Wholesale. Full line of top quality grasses. Improved bluegrass varieties, fine fescues and fine bladed ryegrasses. We specialize in custom mixing. Olinger Seed Company, 2705 Wingate Avenue, Akron, Ohio 44314. Call collect 216 753-2259.

HELP WANTED

CAREER OPPORTUNITY with a sod industry leader. Due to the rapid expansion of our North American sod production capability, The Manderly Corporation is looking for management personnel. If you are interested in a career in agricultural management with an aggressive, fast moving company, we want to hear from you. Apply in writing to: The Manderly Corporation, R.R. 3, North Gower, Ontario, KOA 2TO, Canada. Attention: Alex Baillon, Vice President.

Continues on page 76

When Dave Portz renovated 14 fairways with Roundup®, the members played the same day he sprayed.



Dave Portz
Grounds Superintendent
Brookside Country Club
Mecungie, Pa.

Cleaning up a weedy fairway doesn't have to be a slow, messy job for you—or a hardship for your golfers.

Roundup® herbicide helps make renovation fast and efficient—as Grounds Superintendent Dave Portz discovered last year.

“If we had chosen to plow the course under, we would've had to close it,” Dave says. Instead, he applied Roundup on 14 weedy fairways, and reopened the course the same day. While Roundup worked, the members played over the dying turf, with no problems.

The members—and Dave—liked that. They were glad, too, that Roundup won't wash, leach or volatilize to injure desirable plants along the fairway. Dave simply took precautions against spray drift.

This year, reach for Roundup to control many tough weeds. It can make turf renovation fast and efficient for you—and leave a lot more playing time for your golfers.

For literature, call 1-800-621-5800, or in Illinois, 1-800-972-5858.



**There's never been
a herbicide like this before.**

ALWAYS READ AND FOLLOW LABEL FOR ROUNDUP. RI-8011D
Roundup® is a registered trademark of Monsanto Co. © Monsanto Company 1980

Write 126 on reader service card

ADVERTISING SALES POSITION AVAILABLE with a growing specialty agri. magazine, Chicago territory. Requires individual with 1 to 2 years chemical and equipment sales experience in the agri. or specialty agri. market at the distributors level. Ad. space sales experience desirable but not required. Salary plus commission, all expenses, a strong benefit program and plenty of room to advance. Reply to Box 243, Weeds, Trees & Turf, Box 6951, Cleveland, Ohio 44101.

MANAGEMENT OPPORTUNITY—Fast growing, Michigan based firm seeking a creative, self-starting seasoned horticulturalist to assume responsibility for development and implementation of tree and shrub care division. Related product and equipment knowledge imperative. Excellent salary and career growth potential. Send resume and salary history in confidence to Box 244, Weeds, Trees & Turf, Box 6951, Cleveland, Ohio 44101.

FARM ADVISOR — Environmental horticulture and public service—San Mateo/San Francisco Cos. Develop and carry out extension education and research program in ornamental horticulture, turf, Christmas tree production, and roadway brush control. Adopt practices to meet needs of diverse clientele, including youth and other community groups. Disseminate information through all mass communications media; answer questions and provide backup public service information; also meet groups and assist homeowners. M.S. in a plant science preferred with good grounding in horticulture or agronomy; ability to work well with all people under differing conditions essential. Contact: Personnel Office, Cooperative Extension, 331 University Hall, University of California, Berkeley, CA 94720. Closing date: Sept. 5, 1980. Refer to No. 8036. An equal opportunity/affirmative action employer F/M/H.

IMMEDIATE OPENING for 2 experienced persons devoted to the green industry and who take pride in doing a quality job. Salaries commensurate with experience. Spray foreman or forewoman to manage our spray division. Must either have a degree in horticulture or 5 years experience in diagnosis of insects and diseases of ornamentals. Mechanical knowledge required to be responsible for 3-4 sprayers and trucks. Landscape foreman or forewoman to take full responsibility for residential landscapes. Plant knowledge required. Must have an outgoing personality to deal with homeowners. 5 years working experience necessary. Dennis Anderson & Wife, Inc., 312 438-4770, P.O. Box 702, Barrington, IL 60010.

WANTED — Propagator/manager. Large northeast wholesaler in need of full charge propagator capable of reorganizing and managing a propagation department producing broadleaf evergreens, flowering shrubs, coniferous evergreens, and seedlings. Complete responsibility for personnel, systems, and cultural operations. Must have history of managing a large propagation department including budgeting experience, personnel management, and inter-related communications necessary to work within large organization. Salary level allocated for

this position designed to attract highly successful manager/propagator type individual. Reply to Box 246, Weeds, Trees and Turf, Box 6951, Cleveland, Ohio 44101.

CAREER OPPORTUNITY with Cemetery Association. Superintendent position. Training or experience in horticulture desirable. Should have knowledge of equipment and grounds maintenance, be able to work with and supervise crew of 5 or 8 men using modern equipment on 125 acres. Deal with public and some lot selling. Salary open, fringe benefits. Send resume to P.O. Box 546, Lima, Ohio 45802.

CITY PARKS AND RECREATION DIRECTOR: Grenada, MS (\$ Open). Responsible for all aspects of park, recreation district; its operation and facility function; planning, development, budgeting, financial control, personnel, public relations. Degree in parks and recreation (or equivalent), three years experience in administrative position. Closing date: September 30, 1980. Contact: James J. Turner, P.O. Box 310, Grenada, MS 38901.

JOB OPENING IN HORTICULTURE. Position: Working supervisor and gardener for Kentucky estate. Requirements: Proficiency in horticulture, landscape, greenhouse and garden management. Knowledge of arboriculture and landscape operations highly desirable. References required. For terms and personal resume please contact Mrs. Dillon, P.O. Box 61334, Houston, 77208.

LANDSCAPE IRRIGATION DESIGN and installation. Leading manufacturer of sprinkler irrigation products seeks experienced landscape irrigation design and installation supervisor for 1-year contracts in Saudi Arabia, starting in September. Send resume to: Box 247, Weeds, Trees and Turf, Box 6951, Cleveland, Ohio 44101. Equal opportunity employer M/F/H/V.

LANDSCAPE DESIGNER - SALESMAN. Hustlers only need to apply. Morton Landscaping, P.O. Box 171, Chagrin Falls, Ohio 44022. 216 338-3008.

FOR SALE

VAIL, CO. year-round nursery, snow plow business, located on 1 acre parcel with two commercial buildings, rental income. Includes 3 loaders, 2 dump trucks, 5 pick-up trucks with snow plows. 8 year est. business. 303 476-3433.

ESTABLISHED LAWN & TURF irrigation company in Michigan, machinery, tools, inventory, vehicles, misc. Purchaser shall receive client list and any open contracts at time of sale. Company is very strong in service and installation. Terms available. Reply to Box 248, Weeds, Trees and Turf, Box 6951, Cleveland, Ohio 44101.

ESTABLISHED LANDSCAPING BUSINESS—\$60,000 volume, all equipment, trained employees, satisfied clientele. High potential, excellent reputation. Jim Drake, Zanesville, Ohio. 614 454-1684.

FOR SALE—3 gang Toro Spartan mower & frame, rubber tires, new, still in crate.

No reasonable offer refused. 1977 Jacobson 70 inch trimmer, excellent condition. Call 308 262-1537.

SPRAYERS — FACTORY DIRECT, professional gardeners, turf applicators, proven dependability, unconditionally guaranteed. Black River Sprayers, Box 824, Andrews, S.C. 29510.

BUSINESS OPPORTUNITIES

LEARN LANDSCAPING and the growing of plants at home. Start a satisfying business or hobby. Free booklet. Lifetime Career Schools, Dept. A-828, 2251 Barry Avenue, Los Angeles, Ca. 90064.

WANT TO BUY OR SELL a golf course? Exclusively golf course transaction and appraisals. Ask for our catalog. McKay Golf & Country Club Properties, 15553 N. East Street, Lansing, Michigan 48906. Phone 517 484-7726.

ESTABLISHED LAWN & TURF irrigation company in Michigan, machinery, tools, inventory, vehicles, misc. Purchaser shall receive client list and any open contracts at time of sale. Company is very strong in service and installation. Terms available. Reply to Box 249, Weeds, Trees and Turf, Box 6951, Cleveland, Ohio 44101.

MISCELLANEOUS

START YOUR LANDSCAPING career now! Write: School of Landscape Design and Sales. Lake City Community College, Lake City, Florida 32055. Fully accredited and V.A. approved.

MILKY SPORE BACTERIA — For control of Japanese Beetles and certain other white grubs. Protect your turf . . . apply in fall, for fall and spring protection. Effective up to 20 years. USDA developed. Lb. per 4,000 sq. ft. Catalog. 1 lb. \$14.89; 5 lb. \$69.00; 25 lb. \$299.95. Add 5% for prepaid shipping. Mellinger's, 2304C Range, North Lima, Ohio 44452.

TREE PROBLEMS — Botanical, legal and appraisals. For directory of members of American Society Consulting Arborists in U.S. and Canada, write: Executive Director ASCA, 12 Lakeview Avenue, Milltown, N.J. 08850. 201 821-8948.

POSITION WANTED

EXPERIENCED GOLF COURSE superintendent, 10 years experience in all phases and operations of fine turf management. Willing to relocate. Resume upon request. Box 245, Weeds, Trees and Turf, Box 6951, Cleveland, Ohio 44101.

WANTED TO BUY

WANT TO PURCHASE landscape gardening/nursery oriented business west of Mississippi River. Must be in good profit making condition. Contact L. Thompson, 1742 N. 11th Street, Fort Dodge, Iowa 50501. 717 542-4105.

WANTED — Walk behind Areoblade, good condition, reasonably priced. 205 546-5358.

GREENER GREENS

You just can't use a greener grass than Regal for overseeding your winter greens. Of all the ryegrasses which can be used alone, none demonstrate such a dark green color along with excellent turf quality.

Regal's rapid germination combined with its rich, dark green color helps your greens retain a vibrant, healthy appearance through the fall transition. Plus Regal combines excellent disease resistance, as well as superior heat and cold tolerance, which helps it bounce back from heavy traffic and weather stresses.

Make your greens naturally greener with Regal. Great for tees and fairways, too. For more information, contact North American Plant Breeders, P.O. Box 2955, Mission, Kansas 66201. (913) 384-4940.



First in the science of seeds.™

Alabama split-green comparison overseeded at Auburn.

*Regal ryegrass—left.
Competitive grass—right.*



REGAL

0-1144

Write 160 on free information card

ADVERTISERS

Adelphi Kentucky Bluegrass56	Mathews Co.73
Agro Chem Corp.64	Mobile Aerial Towers65
Brouwer Turf Equipment Ltd.40, 41	Monsanto Chemical Corp. ..51, 75
E.F. Burlingham & Son29	Mott Corp.63
Correct Manufacturer Corp.72	North American Plant Breeder's77
Cushman Turf Equipment, Division OMC/Lincoln66	Northrup King23, 39
Diamond Shamrock4, 5	Pickseed33, 43, 78
Dow Chemical Corp.7	Princeton Turf Equipment52
Excel Industries Inc.74	RainBird Irrigation55
Finn Equipment Co.18	Ryan Turf Equipment, Divison OMC/Lincoln34
FMC Agricultural Machinery21	Safety Test Equipment67
FMC Bolens13	Seed Production, Introduction Corp.14, 15
Hydro-Turf64	Spyder, Foxcroft Development Corp.45
Hypro Pump, Division Lear Siegler71	Tee-2-Green Corpcover 2
International Seeds Inc.35, 47	Toro Turf Equipmentcover 3
Jacklin Seed Co.31, 49, 70	Turf Seed Co.53
Jacobsen Turf Equipment, Division Textron8, 9	Warren Turf Nursery6
Lofts Pedigreed Seed Co.cover 4	Wilt Pruf42

Advertising Sales Offices

ATLANTA
Dick Gore,
National Sales Manager
3091 Maple Drive
Maple Center One Building
Atlanta, GA 30305
404+233-1817.

NEW YORK
Brian Harris
757 Third Ave.,
New York, NY 10017
212+421-1350

SEATTLE
Robert A. Mierow
1333 N.W. Norcross
Seattle, WA 98177
206+363-2864

CHICAGO
Jeff Dreazen
333 N. Michigan Ave.
Chicago, IL 60611.
312+236-9425

Materials and orders for display advertising or classified advertising should be sent to Chris Simco, Harvest Publishing Co., 9800 Detroit Ave., Cleveland, OH 44102. Deadlines are generally the first week of the month prior to publication.



Fiesta
TURF-TYPE PERENNIAL RYEGRASS

There's a reason why Fiesta has become one of the most popular varieties in such a short time. To find out why ask your local seed dealer or write:

PICKSEED
PICKSEED WEST, Inc.

BOX 888, TANGENT, OREGON 97389 (503) 926-8886

Groundsmaster 52.[®] From a 52" offset deck to hydrostatic drive, it's designed to be a Professional.

Donaldson air cleaner for better engine protection.

Deck up front, steering in back for more maneuverability.

Hydrostatic drive for smooth, one-pedal control of forward and reverse.

P.T.O. shaft eliminates belts, simplifies change of accessories.

Deck raises hydraulically for fast, easy transport, even over curbs.

Wide stance wheels for excellent stability.

Offset deck for trimming around obstacles, along curbs, under shrubs.

You're looking at just a few of the features that make this versatile midsize rotary mower so durable and productive.

We don't have room enough to show them all.

For now, we'll tell you the Groundsmaster 52[®] mows like a garden tractor, trims close like a walk mower and lets one man do both. With optional attachments, it's a year round workhorse with everything from vacuum to snowblower to V-plow to broom.

Above all, it's engineered for professional use by the

Professionals in turf care products.

Want a demonstration of the Groundsmaster 52[®]? Or our Groundsmaster 72[®] that mows up to 3.7 acres an hour without losing its cool? Call your Toro distributor. Or, mail the coupon.

TORO[®]

The Professionals[™]

Circle 108 on free information card

Tell me more, Toro!

I'm interested in a free demonstration of the Groundsmaster 52[®]. Please have my distributor call me.

Name

Company

Address

City County

State Zip

Telephone area code number

Mail coupon to: The Toro Company,
Commercial Marketing Dept. WTT-080
8111 Lyndale Ave. S., Minneapolis, MN 55420