

## PRODUCTS

**New hand spreaders** by Gandy Co. feature stainless steel bottom and slides with snap off bottoms for easy cleaning. The new 20 and 24-in.



models hold from 65 to 78 lbs. of material. The spreaders have a slide shutoff activated by a handle crank and a cam gauge adjusted opening for accurate application of granular

fertilizer, pesticides, seeds and more.

**Circle 702 on free information card**

**Hold/Gro®** is a combination of knitted yarns interwoven with strips of biodegradable papers to protect soil



until vegetation is firmly established. Made by Gulf States Paper Corp., Hold/Gro is available in a variety of grades and sizes. The lightweight material can be installed by just two men.

**Circle 703 on free information card**

**Tractor and shredder combination** by Roscoe Brown Corp. clears land by shredding up to 6-in. diameter trees, trash, and other woody debris. A layer of wood chips remains. The device can clear between 1 to 4 acres per day. The tractor can be used for other Brown implements in-



cluding a trencher, backhoe or tamper to perform such tasks as composting, snow removal, brush raking, and trenching and backfilling. A winch can be added. The tractor features hydrostatic drive, logging tires, coordinated or front steering,



**IT ARRIVES WITH THE LOAD, UNLOADS ITSELF . . . . THEN UNLOADS THE LOAD!**



**COMPARE** this user proven material handler with other methods of job site unloading and the bottom line will show you that **THERE IS NO BETTER WAY!!**

## The SPYDER®

**THE SPYDER** — A material handler that offers unequalled performance, low maintenance and operating costs. Over 800 are currently being used by SOD producers and allied industries across the U.S.A., Canada and England.



We also provide a custom-designed lightweight trailer for convenient towing behind a car or truck if this method better meets your requirements.

If you have delivery problems, let us show you how the Spyder can solve them.

For more information on the Spyder call or write: Mike Whitt - Sales Manager  
Foxcroft Development Associates  
5402 Edgewood Rd.  
Crystal Lake, IL 60014  
815-459-3351

**Circle 108 on free information card**

# HYDRO-MULCHER

Dollar for Dollar where quality, performance, and durability count



you can't beat a  
**Bowie  
Hydro-Mulcher**



The revolutionary machine for the turf industry that seeds or sprigs, fertilizes, waters, sprays and mulches in one easy operation . . . a totally new method of lawn, turf and ground cover application, plus faster, more effective erosion control.

### EXCLUSIVE FEATURES

- Only proven unit for both sprigging and seeding with cellulose fiber mulches.
- Equipped with enclosed shredder bar for shredding full bales of cellulose fibers.
- Centralized tower control with no hoses.
- Equipped with tripple agitators for faster mixing and eliminating sediment build-up.
- Uses pump only for spraying, so pump lasts longer.
- Slurry passes through pump only once, thus reducing seed damage and clogging.

**BOWIE INDUSTRIES, INC.**

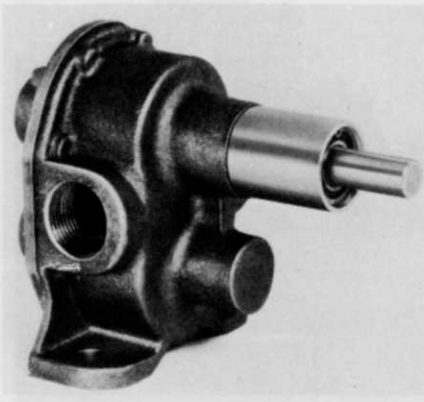
P. O. Box 931 Bowie, Texas 76230 (817) 872-2286

Circle 103 on free information card

and traveling speed of up to 25 m.p.h.

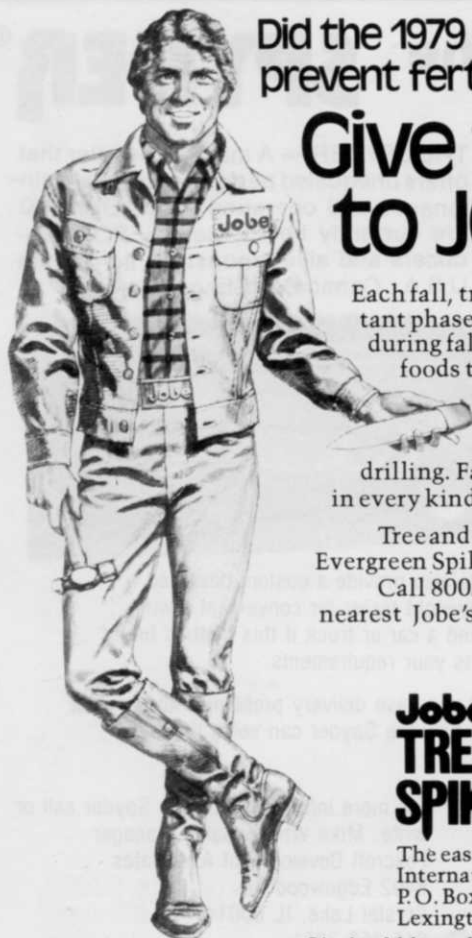
Circle 704 on free information card

**Rotary gear pumps** by Oberdorfer are made of bronze and come in 258 styles and seal options. The pumps



are well-suited for continuous service pumping for a variety of agricultural and industrial applications.

Circle 706 on free information card



Did the 1979 wet spring prevent fertilizing your trees?

## Give the job to JOBE.

Each fall, trees start one of the most important phases in their life cycle. Roots grow during fall and early winter, absorbing plant foods to use for early spring growth.

Jobe's Tree and Shrub Spikes feed trees in about one fourth the time, at less than half the cost of drilling. Fast . . . efficient . . . less costly . . . in every kind of soil.

Tree and Shrub Spikes analyze 16-8-8; Evergreen Spikes 12-6-8. Fruit Tree Spikes 5-15-15. Call 800/354-9360 for the name of your nearest Jobe's distributor.

**Jobe's...  
TREE & SHRUB  
SPIKES**

The easy method for professional tree care.  
International Spike, Inc.  
P.O. Box 1750  
Lexington, KY 40593

Circle 111 on free information card

**Extendable boom cranes** by Auto Crane Co. can be manually extended from 10 ft. to 16 ft. or from 14 ft. to 20 ft. Power 360-degree continuous rotation, power winch, and power raise



boom are operated by a 20-ft. pendant remote control. The manually extendable booms can lift up to 3 tons powered by battery or by AC with stationary mounts.

Safety load sensors react to moment load capacities and protect both the operator and the crane. The 12/24-volt electrical system uses a 12-volt truck battery with a crane-mounted battery to provide more load handling, extended lifting time, long life, and low maintenance.

Circle 707 on free information card

**Complete injection system** by Jaeco Pump Co. comes ready to use with tank, proportioning pump, pressure relief valve, dissolving basket,



strainer, and agitator. Jaeco offers a variety of pumps and tanks with capacities ranging from 50 to 1,500 gallons.

**Circle 701 on free information card**

**Spherical site light** by Johns-Manville provides attractive pole or wall-mounted lighting for areas or streets. By using the spherical lights, a uniform appearance can be main-



tained from parking lot, to walkways, to building exterior. The lights are available in 100w, 175w and 250w mercury; 175w and 250w metal halide; and 70w, 100w and 150w HPS. They are available in black or bronze.

**Circle 709 on free information card**

# THE SUPER TOOLS FOR MAINTENANCE PRUNING

Limb Lopper's lightweight, powerful hydraulic tools get the job done faster and with less effort. Shade tree pruner handles up to 2-inch branches, has insulated extension. Powerful pole chain saw for up to 10-inch wood, has insulated extensions. Circle saw with 9-inch blade for high speed cuts has 30-degree angle head. Insulated extensions and chip guard available.

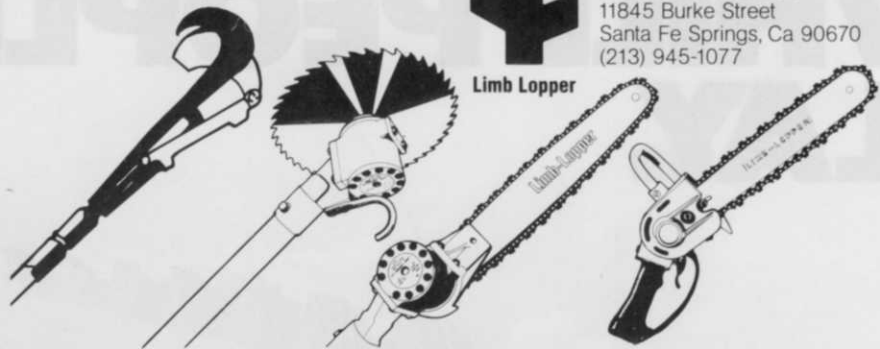
Hand chain saw, beautifully balanced, smooth, quiet operation. Available in 12, 16 and 18-inch bar models.

Combine Limb Lopper high efficiency tools with your existing system—digger-derrick, bucket truck, other mobile equipment or portable power pack. Write or call today for further information.



Robinson Industries  
11845 Burke Street  
Santa Fe Springs, Ca 90670  
(213) 945-1077

Limb Lopper



**Circle 115 on free information card**

## Jack of all Spraying Trades ...from SOLO



SOLO's JETPAK-425 provides professional application of insecticides, fungicides, pesticides, and herbicides in garden, orchard, greenhouse, or nursery. Optional, interchangeable nozzles give JETPAK-425 real versatility. This lightweight, rugged sprayer is made of high-impact, inert plastic.

- 4-gal. see-through tank
- Weighs only 9.5 lb.
- Large-displacement piston pump maintains continuous pressure with little effort
- Padded, adjustable leather carrying straps
- Optional tree-spraying tube, spray drift guard, pressure gauge/limiting valve

Send for free brochure or ask your dealer for SOLO

HANJET-455

**HANJET-455**  
superlightweight nonmetallic manual sprayer; injection-molded of inert, corrosion-proof plastic; ideal for home use; low cost; interchangeable professional-type nozzle tips; 1.3-gal. capacity



Also larger, self-propelled and tractor-mounted mist blowers

PORT-423

**JUNIOR-410/PORT-423**  
Portable engine-powered Mist Blowers; high-impact inert plastic over metal frame support; easy-start SOLO engine, 3 or 5-hp; see-through formula tank



**SOLO INCORPORATED**  
Box 5030  
Newport News, VA 23605  
In Canada: Box 464  
Burlington, Ont. L7R 3Y3

DEALERSHIPS AVAILABLE IN CERTAIN AREAS

# SOLO

**Circle 118 on free information card**

# SEVIN<sup>®</sup> WORKS WHILE PEOPLE PLAY.



On one hand you have pests.  
Destroying. Damaging. Stinging.  
Biting. Annoying.

On the other hand you have  
people. Out-of-doors people. Living.  
Working. Playing. Camping.

That's why SEVIN<sup>®</sup> carbaryl  
insecticide is the answer to your pro-  
fessional grounds maintenance  
needs.

Versatile, broadly  
registered SEVIN controls  
as many as 44 insects that  
attack trees, shrubs, flower-  
ers, turf...and people.  
And it has a long record  
of effective control of  
target pests.

Environ-  
mental concern?



SEVIN controls these 15  
major pests. Plus 29 more!

That's another good reason to use  
SEVIN, since it is biodegradable, and  
has no objectionable odor. When  
compared to other commonly used  
insecticides, it ranks low in toxicity

STOP! ALL PESTICIDES CAN BE HARMFUL TO HEALTH  
AND THE ENVIRONMENT IF MISUSED. READ THE  
LABEL CAREFULLY AND USE ONLY AS DIRECTED. to people,  
farm ani-  
mals, birds and fish.

It offers other benefits too.  
SEVIN is compatible with  
many commonly used fun-  
gicides, miticides and other  
insecticides. Choose from  
several formulations to best  
fit your specific needs.

People. Pests. Pro-  
fessional grounds mainte-  
nance. SEVIN carbaryl insecti-  
cide. They all go together.

For more information about  
SEVIN, contact your pesticide sup-  
plier or Union Carbide. Find out first  
hand why SEVIN is one of the  
world's leading insecticides.



# SEVIN IS THE ANSWER.

CARBARYL INSECTICIDE

SEVIN is a registered trademark of Union Carbide Corporation for carbaryl insecticide.  
UNION CARBIDE AGRICULTURAL PRODUCTS COMPANY, INC., 7825 Baymeadows Way, Jacksonville, FL 32216

Circle 120 on free information card

## CLASSIFIEDS

When answering ads where box number only is given, please address as follows: Box number, c/o Weeds Trees and Turf, Dorothy Lowe, Box 6951, Cleveland, Ohio 44101.

Rates: All classifications 65¢ per word. Box number, \$1. All classified ads must be received by Publisher the 5th of the month preceding publication date and be accompanied by cash or money order covering full payment. Mail ad copy to: Dorothy Lowe, Weeds, Trees & Turf, P.O. Box 6951, Cleveland, Ohio 44101.

### USED EQUIPMENT

**HI-RANGER 54' and other aerial buckets.** 2 Asplundh brush chippers, Prentice hyd. loader, chipper truck, John Bean 20 g.p.m. sprayer, 4 & 9 ton tag-along trailer. Allied Enterprises, Inc., W204 N11509 Golden-dale Rd., Germantown, Wi. 53022. Phone 414 255-6161.

**HI-RANGERS AERIAL BASKETS** 65', 57', 53'. Skyworkers aerial baskets 65', 50', 40'. Vermeer stump cutter 1560, 6. Vermeer tree spade 66, TS 44. Asplundh bucket and brush chippers. Bean sprayer, 9 ton trailer. Parkway Tree Service, 12026 W. Cherry, Wauwatosa, Wisc. 53226. 414 257-1555.

**STUMP CUTTER, VERMEER 1560**, very good condition. Sheehan Tree Service, 1944 Ridge Road, West, Rochester, N.Y. 14626. 716 225-1850.

**NUNES SOD HARVESTER** with pick-up head, completely gone over, excellent condition and 2 Finneyfrock pull type sod cutter. 2 1978 Ryan cutter 15". 301 442-2220.

**FOR SALE OR TRADE: 800 gallon Finn hydro seeder**, skid mounted, \$4,200.00. 1500 gallon Bowie hydro seeder, \$9,800.00. 1973 Ford 3500 tractor, loader, 3 point hitch, like new, \$5,500.00 1971 HD4 crawler, 1 yard loader, \$8,500.00. Kurt Kluznik, 968 Mentor Ave., Painesville, Ohio 44077. 216 951-5295.

**FOR SALE: Nunes turf harvester.** 18" x 72" rolls. Purchased new August 1, 1978. Current model. With mower attachment. \$24,000.00. Call 503 422-7204.

**BRUSH CHIPPERS, used Asplundhs**, Hydro-Axis and bucket trucks. Lease or for sale. Large inventory available. Call or write P. C. Gould Sales Company, Plains Road, Essex, Conn. 06426. 203 767-1636.

**BOMFORD FLAIL auto-mower**, extra parts, cutting head. Very reasonable as no longer needed. Port., Oregon, 641-5813 or 292-6562.

**FOR SALE: Bean sprayer**, 600 gallon capacity, stainless steel tank, low hours, like new with extras. 30 gallons per minute. \$4,500.00 Charles Joerres, 899 Indian Town Rd., Fall River, Mass. 617 678-4815.

**JACOBSON GREENS KING 62** and Verti cutters, 3rd year. Jacobson 70 trimmer, 2nd year. These units never been on grinder. 5 gang Spartan Toro, good condition. 3 gang Spartan Toro, new. Foley sharpener, hoist and attachments. Back lapper. Toro Greensmaster. Equipment off 9 hole course. Carl Foley, Manager, Bridgeport Golf Course, Star Route, Bridgeport, Nebraska 69336. 308 262-1537.

**1 "ROBARK" netsetter**, like new condition, 40 acres of use. 1 year old. \$8,500.00. Call Mr. Silk 206 825-5266 collect or write Barron Industries, P.O. Box 1, Sumner, WA 98390.

**FOR SALE: Finn hydro seeder.** Like new, 0275 hours, 1560 gallon size. Price \$8,000.00. Northwest Nursery Company, Inc., Box 934, Valley City, North Dakota 58072.

**FOR SALE: 10-1977 Chevy one-ton trucks**, 750 gal. spray tanks, R & M 3L4 pump, electric hose reels, spray hose, ready to spray. Phone 513 845-0631.

**FOR SALE: 5-800 gallon Tuflex spray tanks**, 2 years old in excellent condition. 513 761-4100.

**SOD CUTTER 16' Ryan overhauled**, good condition, \$500.00. John Deere trencher 3' width, 18' depth, new carbide chain,

\$350.00. Holland one row transplanter, 3 point hitch mount, \$250.00. Power rake 24', runs, \$75.00. Heisel Landscape Nursery, Bozeman, Montana. 406 587-4858.

**FOR SALE: Used Nunes sod harvester.** Diesel International tractor, good condition. Trade in on new Princeton. \$8,500.00. Call Rodger Osborne, 614 837-9096, Princeton Mfg. Company, Canal Winchester, Ohio 43110.

**USED PUMPS, John Bean 30 & 35;** Frank Wheatley P200A; Complete spray truck 1963 F600, 1000 gal. tank, pump, reel; All good condition. Portland, Oregon 503 297-4010 or 646-3281.

### FOR SALE

**LANDSCAPE CONTRACTING and maintenance business:** Among top firms in Chicago and adjacent six county area. Blue chip, long-term accounts. Over two million dollars gross good net. Fully equipped, good shop, office, 14 acre yard and irrigated, lath houses. Modern and diversified equipment. Fully staffed with trained and professional personnel. Owner will remain for several years if desired. Business mix 60% contracting. Will sell contracting business separate. Complete disclosure to qualified buyer upon contacting: George H. Cumpata, C.P.A., 707 Davis Rd., Elgin, Illinois 60120. 312 697-6161.

**TWO LAWN SPRAYING SERVICES in central Illinois** 35 miles apart. Over \$110,000 volume, 2 Ford F600 1200 gallon trucks, 1 F600 Ford flatbed, 1 F100 Ford, 2 300 gallon Bean sprayers, 1 200 gallon Bean sprayer, 2000 & 3000 gallon storage tanks on flatbed, 1500 gallon fiberglass storage tanks, misc. equipment. Will sell together or individually. Write Box 235, Weeds Trees & Turf, Box 6951, Cleveland, Ohio 44101.

**9 YEAR TREE, spray & trim business in Roslyn Heights, N.Y.** Most respected in area. Large repeat business at top dollar. Opportunity for expansion unlimited. Equipment; accounts. Write or call Quality Tree Service, P.O. Box 1321, Roslyn Heights, N.Y. 11577. 516 484-1799.

**REMARKABLY PROFITABLE lawn spraying business.** Suburban north Jersey. Details: 700 selected accounts. Alfred Lockwood, 239 Brookvalley Rd., Towaco, N.J. 07082.

**CROP-GROWING SUPPLIES in central east.** Profitable. Family size. Potential in commercial lawn, tree and turf area. Write: Box 234, Weeds Trees & Turf, Box 6951, Cleveland, Ohio 44101.

### WANTED TO BUY

**USED BRUSH CHIPPER and stump cutter** in good condition. Contact Ray Hallford, Tree Doctor, P.O. Box 30121, Dallas, Texas 75230. 214 690-1945.



### TREE TRUCKS

- (22) 1970-72 GMC 5500 series with crew cabs and dump chip boxes. Running condition but all need minor repairs. \$2,300 to \$2,900.
- (15) 1967-70 GMC tree trucks (same as above) All need major repairs.

Value lies in crew cab and chip box, \$1,200 to \$1,600.

- (5) 1972 Int. 1800 series 14' grain, trash or fire wood body dump, \$5,000 each.

**OPDYKE'S AUTO SALES**  
Rt. 309  
Colmar, Pa. (Phil. area)

## SEEDS

**SOD QUALITY Seeds:** Adelphi, Glade, Cheri, Nugget, Merion, Fylking, Majestic, Baron & Touchdown bluegrasses, also fine fescues. Manhattan ryegrass. Custom mixing available. Michigan State Seed, Grand Ledge, Michigan 48837. Phone 517 627-2164.

**LAWN SEED. Wholesale.** Full line of top quality grasses. Improved bluegrass varieties, fine fescues and fine bladed ryegrasses. We specialize in custom mixing. Olinger Seed Company, 2705 Wingate Avenue, Akron, Ohio 44114. Call collect 216 753-2259.

**TURF GRASS SEEDS.** All improved varieties suitable for Canadian conditions, custom mixtures, and Prill-On coated seeds. Oseco, Inc., P.O. Box 219, Brampton, Ontario, Canada, L6V 2L2. Phone 416 846-5080.

## HELP WANTED

**GOLF COURSE TURF PROFESSIONALS:** An opportunity to sell Pro Turf® products. ProTurf Division of O.M. Scott & Sons, the nation's leading manufacturer and marketer of professional turf products, has openings for Technical Representatives in several territories. The Tech Reps selected will call on golf course superintendents, requiring a knowledge of turf management and an understanding of these professionals' needs. Applicant should have a BS degree or equivalent in one of the agronomic sciences. Excellent starting salary plus bonus, automobile, and a comprehensive benefits program at no cost to employees go along with these positions. Send resume in confidence to Dick Stahl, Director of ProTurf, O.M. Scott & Sons, Marysville, Ohio 43040. An equal opportunity employer.

**POSITION AVAILABLE** coordinating sod growing and sales on two farms; some travel; southern U.S.; background in horticulture or agronomy. Salary plus bonus. Please send complete resume to Box 231, Weeds, Trees and Turf, Box 6951, Cleveland, Ohio 44101.

**MAINTENANCE FOREMAN:** Landscape contracting firm looking for a 2 or 4 year horticulture or landscape graduate, or individual with equivalent experience to handle spraying and small landscape jobs. Working position for mature, responsible, person who is willing to produce. For more complete details, call or write to: Garden Gate Landscaping, Inc., Attn: Jim Speipel, 821 Norwood Road, Silver Spring, MD 20904. 301 924-4131, office, 301 848-6490, Home.

**SELL LAWNSPRAY DEALERSHIPS** — Join one of America's oldest and fastest growing natural and organic lawnspray companies as a company-trained representative earning top commissions. Degree and agronomic experience preferred, but not absolutely necessary. Unlimited potential and free training for the right candidates across the U.S. Send resume in confidence, or call Tom Hughes, V.P. Marketing, Agro-Chem, Inc., 11150 W. Addison, Franklin Park, Illinois 60131, 312 455-6900.

**ASSISTANT MANAGER** — Excellent opportunity for financial advancement for settled person age 28 years or older with sod, landscaping, and farming experience to assist in operation and management of sod farm near Bowie, Maryland. Forward resume to Fairwood Turf Farm, Inc., 12307 Annapolis Road, Glenn Dale, Maryland 20769.

**PARK AND RECREATION DIRECTOR:** Looking for an enthusiastic, experienced person to direct a multi-facet park and recreation program. Salary range \$12,840-\$16,200. Fringe benefits. Forward resume to Park and Recreation Board, attention: City Clerk, P.O. Box 438, City of Maryville, Missouri 64468. Equal opportunity affirmative action employer.

**BAREFOOT GRASS LAWN SERVICE of Denver, Colorado** will be accepting applications for Lawn Technicians in December. Positions will be available, beginning February 1st 1980. Send resume by January 5th, 1980 to: 2045 S. Valentia St., No. 18, Denver, CO 80231.

**WANTED: General manager for turf and agriculture** farm operation. Experienced in warm climate grasses, also cotton and alfalfa preferred. Excellent salary and benefits. Live and enjoy the Valley of the Sun. Please send resume and inquiries to: Arizona Turf Farms, P.O. Box 861, Chandler, AZ 85224.

**ASSISTANT SOD FARM MANAGER** — Must be mature, familiar with all phases of sod farming. Good salary & benefits. Experience 5 years necessary. Send resume to Valley Green Sod Farm, Lawn & Garden Center, 1996 Sedivy Lane, Rapid City, South Dakota 57701. 605 348-6999.

**LANDSCAPE SALES: Salaried position in sales** for person with selling, design, mathematics and landscaping skills with commercial landscape contractor. EOE. Send resume to: Chapel Valley Nursery Company, 3275 Jennings Chapel Road, Woodbine, Maryland 21797.

**CHEMICAL LAWN CARE company needs working foreman** with at least three years experience in turf management including supervision, sales, customer and employee relations. Must have mechanical background. 214 690-1900. Lawn Doctor, P.O. Box 30121, Dallas, TX 75230.

**TREE CREW LEADERS and Tree Trimmers**, qualified, to do utility line clearing needed in our Mountain States Division and other areas. Crew leader applicants must have good record of successful crew operation. Send letter showing qualifications and references with address and phone number to: Personnel Director, Wright Tree Service, Inc., P.O. Box 1718, Des Moines, Iowa 50306. An equal opportunity employer.

**EXPERIENCED SALESPERSON. Products** — grass seed, sod, allied lines. Territory-Northern Ohio, Western Pennsylvania. Salary plus expenses and bonus. Send resume to Green Valley Turf Farms, Inc., P.O. 163, Canfield, Ohio 44406.

## BUSINESS OPPORTUNITIES

**WANT TO BUY OR SELL a golf course?** Exclusively golf course transactions and appraisals. McKay Golf & Country Club Properties, 15553 N. East St., Lansing, Michigan 48906. Phone 517 484-7726.

**LEARN LANDSCAPING and the Growing of Plants at home.** Start a satisfying business or hobby. Free booklet. Lifetime Career Schools, Dept. A-611, 2251 Barry Avenue, Los Angeles, Ca. 90064.

**A GOING ARBORCULTURE business, fantastic potential** (in business since 1955). Equipment in A1 condition. Five man crew, owner retiring. Call for appointment. Will finance. Bancrofts's, Inc., 27 Pleasant St., P.O. Box 1685, Plainville, Mass. 02762. Phone 617 695-5461.

## MISCELLANEOUS

**KELWAY SOIL pH TESTER, used by professionals everywhere.** Direct reading, longlasting, portable, lightweight, no power source. Model HB-2 reads moisture too. Available through local distributors or contact Kel Instruments Co., Inc., Dept. W, P.O. Box 1869, Clifton, N.J. 07015. 201 471-3954.

## WANTED TO BUY

Corporation wishes to acquire company involved in herbicide application (industrial or utility), mechanical brush removal, or tree trimming.

Cash deal.

Reply to:

P. O. Box 358  
Cedar Knolls, New Jersey 07927



**How are you fixed for the future?**

Look into U.S. Savings Bonds as a smart place to put your money.



**U.S. Savings Bonds**



## EVENTS

The current issue of **WEEDS TREES & TURF** carries meeting dates beginning with the following month. To insure that your event is included, please forward it, 90 days in advance, to: **WEEDS TREES & TURF Events, 9800 Detroit Ave., Cleveland, OH 44102.**

**50th Annual Michigan Turfgrass Conference**, Michigan State University, E. Lansing, MI, **Jan. 15-16.** Contact: Thomas Smith, 323 Agriculture Hall, Michigan State University, E. Lansing, MI 48824.

**Southern Weed Science Society Annual Meeting**, Arlington Hotel, Hot Springs, AR, **Jan. 15-17.** Contact: Jerry Weber, North Carolina State University, Weed Science Center, 3123 Ligon St., Raleigh, NC 27607.

**Mid-Am Trade Show**, Rosemont, IL, **Jan. 20-23.** Contact: Mid-Am Trade Show, 4300-L Lincoln Ave., Rolling Meadows, IL 60008, 312-359-8160.

**Ohio Nursery Short Course and Trade Show**, Sheraton-Columbus Hotel and Veterans Memorial, Columbus, OH, **Jan. 20-24.**

**Landscape Ontario Annual Congress**, Sheraton Centre Hotel, Toronto, Ontario, Canada, **Jan. 22-24.** Contact: Robert Cheesman, Landscape Ontario, 103-3034 Palstan Rd., Mississauga, Ontario, Canada, L4Y 2Z6, 416-276-6177.

**Connecticut Tree Protective Association 558th Annual Meeting**, Sheraton Park Plaza Hotel, New Haven, CT, **Jan. 23.** Contact: Connecticut Tree Protective Association, P.O. Box 352, West Haven, CT 06516.

**Basic Short Course in Horticulture—**Brentwood Theater, Veterans Administration, West Los Angeles, CA, **Jan. 22, 29; Feb. 5, 12, and 19;** Diamond Bar Country Club, Diamond Bar, CA, **Jan. 23, 30; Feb. 6, 13,**

**and 20;** UC Cooperative Extension Office, San Bernardino, CA, **Jan. 24, 31; Feb. 7, 14, and 21.** Contact Ed McNeill, Registration Coordinator, Horticultural Education Fund, 1000 Concha St., Altadena, CA 91001, 213-798-1715.

**Annual Turf & Landscape Conference**, Tappan Zee Inn, Mountain View Ave., Nyack, NY, **Jan. 30.** Contact: Frank Claps, 136 Laurel Ave., Larchmont, NY 10538, 914-834-6846.

**16th Turfgrass and Environmental Landscape Exposition**, San Mateo County Fairgrounds, San Mateo, CA, **Jan. 30-31.** Contact Emory Hunter, Chairman, NCTC, P.O. Box 268, Lafayette, CA 94549.

**Virginia Turfgrass Conference**, Fort Magruder Inn, Williamsburg, VA, **Jan. 30-31.** Contact: J.F. Shoulders, Ext. Specialist-Turf, College of Agriculture and Life Sciences, Virginia Polytechnic and State University, Blacksburg, VA 24061.

**ALCA Annual Meeting and Trade Exhibit**, Town and Country Hotel, San Diego, CA, **Feb. 3-8.** Contact: Associated Landscape Contractors of America, 1750 Old Meadow Rd., McLean, VA 22102, 703-821-8611.

**United States Golf Association Regional Turf Conferences**, **Feb. 4** Myrtle Beach Hilton, Myrtle Beach, SC; **Feb. 6** Quality Inn, Cypress Gardens, FL; **Mar. 3** Phoenix Country Club, Phoenix, AZ; **Mar. 6** Holiday Inn West, Billings, MT; **Mar. 7** Broadmoor Golf Club, Seattle, WA; **Mar. 11** Lakeside Country Club, Houston, TX; **Mar. 13** James River Country Club, Virginia Beach, VA; **Mar. 18** Westchester Country Club, Rye, NY; **Mar. 20** Oakmont Country Club, Pittsburgh, PA. Contact USGA, Far Hills, NJ 07931, 201/766-7822.

**Colorado Nurserymen's Association Nursery Conference**, Denver Merchandise Mart, 451 East 58th Ave., Denver, CO, **Feb. 4-6.** Contact Cary G. Hall, Executive Secretary, Colorado Nurserymen's Association, 10775 North 65th St., Longmont, Co 80501.

**Wastewater Irrigation Course**, Denver, CO, **Feb. 5-7.** Contact: The Irrigation Association, 13975 Connecticut Ave., Silver Spring, MD, 20906, 301-871-8188.

### When a turf system needs...

**STRONG,  
STEEL  
FITTINGS  
for  
PLASTIC  
PIPE.**



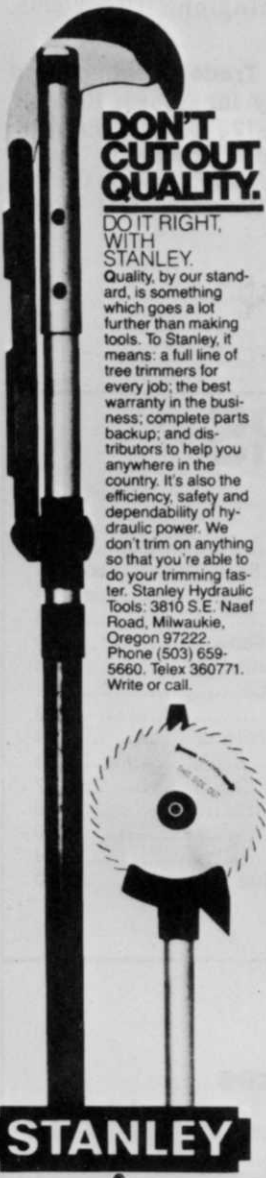
The industry's heaviest epoxy coating — over twice the thickness of conventional coatings

Chevron type gasket gives maximum savings in installation time and cost

**McDowell EPOXI-LOKT®**  
McDowell Manufacturing Company, An Alco Standard Company, DuBois, PA 15801 • 814/371-6550

Circle 156 on free information card





**DON'T CUT OUT QUALITY.**

**DO IT RIGHT, WITH STANLEY.**  
Quality, by our standard, is something which goes a lot further than making tools. To Stanley, it means: a full line of tree trimmers for every job; the best warranty in the business; complete parts backup; and distributors to help you anywhere in the country. It's also the efficiency, safety and dependability of hydraulic power. We don't trim on anything so that you're able to do your trimming faster. Stanley Hydraulic Tools: 3810 S.E. Naef Road, Milwaukie, Oregon 97222. Phone (503) 659-5660. Telex 360771. Write or call.

**STANLEY**

Circle 148 on free information card  
MAY 1979/WEEDS TREES & TURF 65



**the bronson concern.**  
263 The Water Tower  
Portland, Oregon 97201  
222-3546 area 503

21 August 1979

Mr. Dick Gore  
National Advertising Sales Manager  
Harvest Publishing Company  
#312, Maple Center One Building  
3019 Maple Drive  
Atlanta, Georgia 30305

Dear Dick:

I'm writing to express our appreciation to your publication, **Weeds, Trees & Turf**, for its truly outstanding performance for our client **Stanley Hydraulic Tools**. Effective 15 February of this year, our 1/3 page B&W ad for Stanley's line of tree-trimming tools had drawn more inquiries (771 in eleven months) than any other of the company's ads in other publications. In fact, the next closest number of inquiries were drawn by a 4-color spread (528)! Needless to say, we're impressed, and grateful, and we can anticipate **Weeds, Trees & Turf** becoming an ever-stronger part of Stanley Hydraulic's total promotional program.

Best regards,  
*Ingrid Louiselle*  
Ingrid Louiselle  
Media Director

IL/hs  
cc: Mr. Bob Mierow

771 inquiries  
in eleven months.

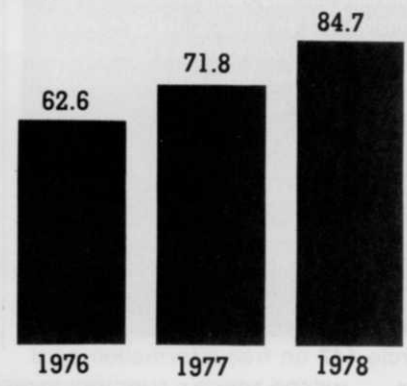
**This Stanley one-third page in Weeds Trees & Turf pulled "more inquiries than any other publication . . . Even more than a four-color spread elsewhere"**  
—Ingrid Louiselle, the bronson concern

Buyers who track advertising performance know **Weeds Trees & Turf** magazine is highly productive . . . and we think productivity is a mighty important testimonial for media decisions.

**Come grow with us. WEEDS TREES & TURF**

Average reader inquiries per display ad placed in WT&T for years shown.

Actual represents 26% gain 1976-1977

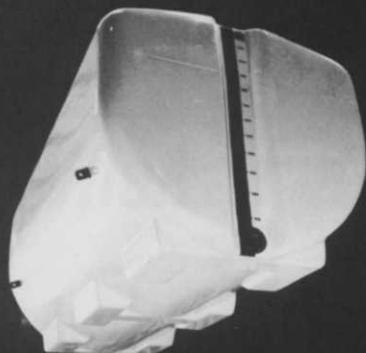




**WHEN  
THERE'S NO  
SUBSTITUTE  
FOR THE BEST!**



Model #PC 1200 fiberglass tank equipped with fiberglass pump cover, Model #D 200 gallon mixing tank shown mounted on a custom truck body by Strong Enterprises.



Bottom view of the Model #PC 1200 tank showing to best advantage the integral molded mounting base and steel hold-down lugs designed for ease in mounting on your truck and eliminating costly installation.

**THE Tuflex Manufacturing process allows a five year warranty on all tanks.**

*Tuflex* is the only manufacturer to specialize in *seamless* fiberglass spray tanks specifically for the pest control and lawn care industry. Remember when craftsmanship was an art... at Tuflex it still is! The exclusive Tuflex process carries a full five year warranty on all handcrafted seamless fiberglass tanks.

For economy prices and more information on our complete line of tanks, write or call now:

**Tuflex Manufacturing Company**  
Post Office Box 13143  
Port Everglades, Florida 33316  
(305) 525-8815

**Events** from page 48

**Super Turf Seminar**, Holiday Inn, West Palm Beach, FL, **Feb. 8-9**. Contact Eldon Mahan, Box 311, Bethany, OK 73008, 405/787-8034.

**Landscape/Garden Center Management Clinic**, The Galt House, Louisville, KY, **Feb. 10-13**. Contact Harry C. Kiely, Administrator, Garden Centers of America, 230 Southern

Bldg., Washington, DC 20005, 202/737-4060.

**Horticultural Trade Meeting And Show**, Holiday Inn, North Randall, OH, **Feb. 12-13**. Contact Fred K. Buscher, Area Extension Agent, Horticulture, Area Extension Center, O.A.R.D.C., Wooster, OH 44691, 216/262-8176.

**WT&T**

**ADVERTISERS**

Agro-Chem Inc. ....	24	Limb Lopper .....	43
Bowie Industries.....	42	Lofts Pedigreed Seed Co.....	cover 4
Brouwer Turf Equip. Ltd. ....	23	Mathews Co. ....	6
Cellin Mfg. Co. ....	21	McDowell .....	48
Cushman/OMC Lincoln.....	13	Mid-Am Trade Show .....	40
John Deere & Co., Inc.....	2,3	Monsanto Chemical Co. ....	15
Great Lakes Biochemical.....	5	Princeton Mfg. Co. ....	14
Ditch Witch, Div. Charles Machine Works.....	37	Rhone Poulenc .....	8,9
Foxcroft Dev. Corp. ....	41	Ryan/OMC Lincoln.....	4
Howard Price Turf Equip. ....	10	Solo .....	43
International Spike .....	42	SPIC.....	7
Jacobsen Mfg. Co. ....	16,17	Torco .....	36
Kawasaki .....	31	Tuflex .....	50
Lakeshore Supply .....	cover 3	Union Carbide.....	44
		Wisconsin Marine .....	40

**Advertising Sales Offices**

**ATLANTA**  
Dick Gore,  
National Sales Manager  
3091 Maple Drive  
Maple Center One Building  
Atlanta, GA 30305  
404+233-1817.

**NEW YORK**  
Brian Harris  
757 Third Ave.,  
New York, NY 10017  
212+421-1350

**SEATTLE**  
Robert A. Mierow  
1333 N.W. Norcross  
Seattle, WA 98177  
206+363-2864

**CHICAGO**  
Jeff Dreazen  
333 N. Michigan Ave.  
Chicago, IL 60611.  
312+236-9425

*Materials and orders for display advertising or classified advertising should be sent to Chris Simco, Harvest Publishing Co., 9800 Detroit Ave., Cleveland, OH 44102. Deadlines are generally the first week of the month prior to publication.*