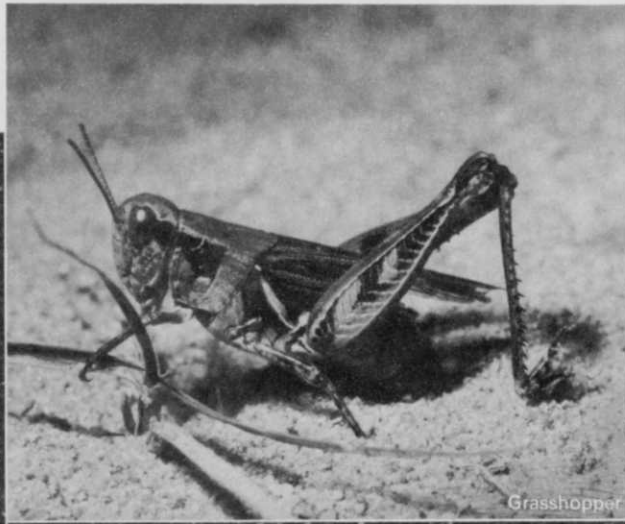


Leafhopper



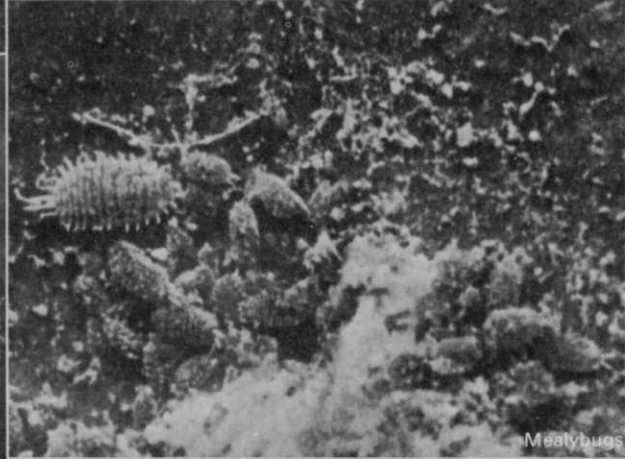
Grasshopper



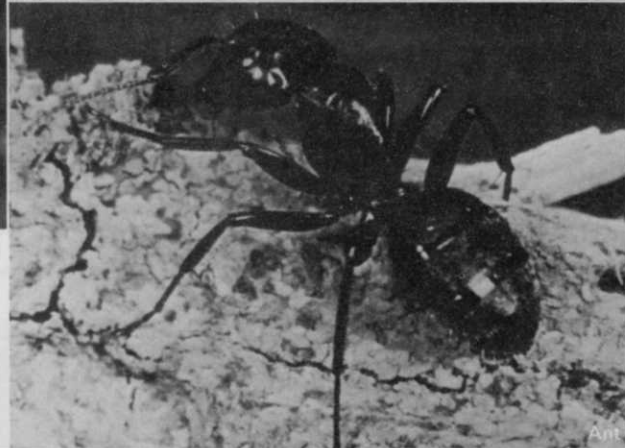
Hairy chinch bug



Cutworm



Mealybugs



Bagworm



Bagworms

Ag-Organics Department, Midland, Michigan 48640

These are only seven of the turf and ornamental pests Dursban controls.

If we had more space, we could show you another seven. Like sod webworms, brown dog ticks, earwigs and *Hyperodes* weevils in turf. Or ornamental plant pests like mites, spittlebugs, exposed thrips, white flies and many more. But our point is, DURSBAN* insecticide is the choice of professional lawn sprayers when they need to get the job done. DURSBAN insecticide is effective on a wide variety of insects—including resistant strains. And it's effective in a wide variety of applications. It's economical because a little goes a long way. It's non-phytotoxic, and it is biodegradable. So, if you haven't tried it yet, it's about time you did. Just remember to read the directions for use and follow the precautions for safe handling on the product label.

*Trademark of The Dow Chemical Company



DOW CHEMICAL U.S.A.

For More Details Circle (158) on Reply Card



Gabe Eros (l) president and general manager of Oseco Ltd. receives the World Championship award for the variety Highlight Chewings Fescue at the Royal Winter Fair in Toronto, Can. At right is Paul King, chairman of the Canadian Seed Trade Assn. public relations committee. The seed, judged best in the pedigree forage seed class, was grown for Oseco by Walter Hafner of Sublimity, Ore., by arrangement with International Seeds of Halsey, Ore.



New to New England is a growing sod industry. It has grown from a few dozen acres in 1963 to several thousand in 1973. These are sod producers who are members of the New England Sod Producers Assoc. They toured turfgrass research plots at the U of R. I. in September. Professor Dick Skogley has been working closely with this group.

Green Industry Newsmakers

PEOPLE PLACES EVENTS



An Honorary Certificate of Merit from the University of Maryland has been awarded to L Robert Shields, golf superintendent, Woodmont Country Club, Rockville, Md. He has helped establish college-level scholarships in turfgrass and golf course management. In fact, Glenn S. Shields (r) is one of three U. of Md. 4-year students to receive the scholarship for 1973-74. Mrs. Shields (l) joined son Glenn and Bob for the presentation.



This is Midwest, a new variety of crab-apple just released by the USDA Soil Conservation Service Plant Materials Center, Mismarck, N. D. It is disease resistant, winter hardy — even in No-dak country — propagates well from seed, grows fairly rapidly and makes good growth shape. It bears small apples, about 1/4 inch in diameter. The fruit remains on the tree and forms "raisins" that stay on until spring or until harvested by wildlife.



The executive committee of the Horticultural Research Institute has recommended that HRI serve as a pipeline of information from all segments doing research related to the industry. Committee members shown here are: (1-4) Donald Murray, Stoffel Seals Corp., N. Y.; R. E. "Ed" Brown, Goochland Nurseries, Inc., Fla.; Don McConnell, McConnell Nursery Co., Ltd., Canada; Robert Siebenthaler, The Siebenthaler Co., Ohio; Evert Asjes, III, Rosehill Gardens, Inc., Mo., HRI pres.; Patrick, HRI administrator; Albert "Bud" Cartwright, Jr., Cartwright Nursery Co., Tenn.

WEEDS TREES and TURF



PULL OUT
SECTION

1974 MANAGERS GUIDE
TO EQUIPMENT AND SUPPLIES

Take the first step toward more efficient grounds maintenance. **Send for your brochure now!**



Not even the Red Baron could out-maneuver a HUSTLER!

**EXCEL
HUSTLER**
MODEL 272 AND
HILLSIDE MODEL 360

Dual Hydro MOWERS

*for commercial, institutional
and governmental groundskeeping*

NEW—for Dikes, Cloverleaf or Slope Maintenance

HILLSIDE MODEL 360 has all the HUSTLER features plus an operator platform that is self-leveling. Even on a 30° slope both drive wheels have equal weight distribution for increased side-hill stability. A separate hydraulic mechanism keeps engine, canopy and rider level. Besides the flail mower, a six-foot rotary and other options are available.



For More Details Circle (144) on Reply Card

You may already be aware of our HUSTLER mower—how it practically eliminates hand trimming because of its outstanding maneuvering ability. But you need more facts about this unique machine in order to judge its possibilities for the work you have to do.

In this brochure you can see the machine mowing around trees, under bushes and along walls. You can study a diagram showing how our dual hydro transmission gives independent control to each drive wheel. We tell you a HUSTLER can do the work of three mowers. We say it takes one-third the time you may now be spending with more pieces of equipment.

But all we hope is that this brochure will help you make the decision for a demonstration. You have to experience the sensation of operating a HUSTLER and test its capabilities. See how its mowing deck works up close to obstacles. You can convince yourself it will outperform any other equipment you may be considering.



So take the first step. Send now for this brochure, especially if you're faced with a bigger work load or a smaller work force. We'll send along the name of your nearest distributor who will be glad to arrange a demonstration. HUSTLER approved under Federal GSA contract (GS-OOS-05347).

For More Details Circle (145) on Reply Card

Phone 316-327-4911

EXCEL INDUSTRIES, INC.

Box 385, Hesston, Kansas 67062

1974 Managers Guide To Equipment And Supplies

Making the right decision in selection of equipment and supplies is one of the most important jobs of a manager in the Green Industry. Besides being an important item on an investment budget, equipment must also be maintained. This calls for wise initial selection, correct accounting procedures for depreciation, effective preventive maintenance and proper major maintenance when needed.

Perhaps the most important step is in selection. It is with this in mind that WEEDS TREES AND TURF presents this 1974 Green Industry Managers Guide To Equipment And Supplies.

The Guide is in two parts. Manufacturers and their equipment and supplies are listed first. **Advertisers are in bold face type.** Product groupings and manufacturers of a particular item are listed second. Because manufacturers add and delete product lines, change names and generally never remain static, omissions of certain manufacturers and/or product lines are unavoidable. Your comments and suggestions are invited to help improve future editions.

A

AMF Western Tool Division, 3811 McDonald Ave., Des

Moines, Iowa 50313

Mowers, rotary

Tractors, AMF 1281 and AMF 1293

Riding mowers, rotary

A.O.A. Research & Development, Inc. (P.O. Box 6081C) 608 Virginia Dr., Orlando, Fla. 32803

Underwater weed cutter, manually operated, spring steel, serrated, doubleaction blades cuts weeds with forward and backward stroke

Ace Pump Corp., 1650 Channel Ave., Memphis, Tenn. 38113

Pumps, centrifugal

Pumps, nylon roller

Pumps, diaphragm

Ackley Mfg. Co., 13770 S.E. Ambler, Clackamas, Ore. 97015

Ackley, pole circle saw, hydraulically powered; pole chain saw, hydraulic; chain saw, hydraulic; pruners, hydraulic; alternator, hydraulic; sump pump, hydraulic

ADS—Advanced Drainage Systems, 1880 MacKenzie Dr., Columbus, Ohio 43220

Corrugated Plastic Drainage Tubing, sizes of tubing and fittings from 4 inches to 18 inches in diameter

Adventure Line Mfg. Co., 3333 Main St., Parsons, Kansas 67357

Astro Hook, crane/ladder, truck mtd., hydraulic

Highworker, platform lift, truck mtd., hydraulic

Tailgate, 1,000 lb. cap. pickup mtd. tailgate, all of our equipment is designed for use on pickup trucks

Aeroquip Corporation, 300 S. East Ave., Jackson, Michigan 49203

Hose and fittings, hydraulic, fuel, air, oil, water; pressure from low to super high

An Asplundh Chipper makes you more money than you bargained for.

Drop us a note for more detailed literature and specifications. Asplundh Chipper Company
50 E. Hamilton Street, Chalfont, Pa. 18914

ASPLUNDH



AgTronics Mfg. Co., 1560 State St., Barstow, Calif. 92311
Soil moisture meter

Air-Lec Industries, Inc., 3306 Commercial Ave., Madison, Wisconsin 53714
Air-Lec, aquatic weed cutter
Air-Lec, aquatic weed rake

Air Rake Mfg. Corp., 5 Springfield St., Chicopee, Mass. 01013
Blowers, leaf

Alcoa Aluminum Co. of America, Alcoa Building, Pittsburgh, Pa. 15219
Irrigation pipe

Allis-Chalmers, 1205 S. 70 Street, Milwaukee, Wisconsin 53211

Model 620 tractor, 19½ hp with tires rear 34.0"
Model 615 backhoe-loader, Allis-Chalmers 56 hp gasoline engine
Model 816 backhoe-loader, Perkins diesel engine 83 hp
Model 918 backhoe-loader, Allis-Chalmers diesel 84 hp engine
Mower (sickle bar), length 56" tractor (620) mounted
Rear mtd. Roto-Tiller, 48" size for 620 tractor
Rotary mower, 48" swath for 620 tractor

Amchem Products, Inc. Brookside Avenue, Ambler, Pennsylvania 19002

Meter Miser, liquid spreader gives precision application of Weedone liquid herbicide products without the need for calibration
Directa-Spra, sprayer end unit

American Arborist Supplies, Concord Industrial Park, Concordville, Pa. 19331
Arborist supplies

American Excelsior Corp., 850 Ave. H, East Arlington, Tex. 76010
Erosion Control Products
Soil Retention Products

American Hose & Reel Co., P.O. 639, Marland, Okla. 74644
Thermoplastic spray hose with working pressure of 250, 400 and 800 PSI; ¼, ⅜, ½, ¾-inch sizes
Fertilizer applicator tubing; ¼, ⅜, ½, ¾-inch sizes
Hose reels; small, 300 ft., ½-inch hose, 1000 P.W.P.; large, 300 ft., ¾-inch; adjustable drag

American Lincoln Corp., 518 S. St. Clair, Toledo, Ohio
Welders

American Optical Corp., 14 Mechanic St., Southbridge, Mass.
Respirators, protects against harmful, highly toxic sprays, dusts and vapors in pesticides, fertilizers, etc.
Eye protection goggles, protects against impact or dust & chemicals resulting from spraying, dusting, cutting, etc. Available with clear or sunglass lenses, plain or coated for anti-fogging.
Hard caps and hats, head protection against falling limbs or branches — Meets Amer. Nat'l Std. Z89.1-1970
Hearing protectors, protects hearing from damaging or irritating noises of tractors, sprayers, power saws, etc.

Ametek, Plymouth Plastics Division, 502 Indiana Ave., Sheboygan, Wisc. 53801
Superflexon plastic boxes, plastic irrigation valve boxes with turf green covers
Meter pits, plastic

Amoco Chemicals Corp., Industrial Products Div., 1530 Commerce Dr., Stow, Ohio 44224
Polyethylene pipe and fittings for irrigation
PUC pipe and fittings for irrigation
Corrigated plastic drainage tubing

Andrasko Engineering Co., P.O. Box 4633, Santa Barbara,

Calif. 93103

The Meter Matic, fertilizer injector for irrigation systems

Aqua-Dial, P.O. Box 1325 Newport Beach, Calif. 92624
Turf irrigation Equipment
Automatic valves, hydraulic and electric, remote control Automatic controllers
Sprinklers, gear driven, pop up, vandal resistant, lawn and garden

Aquamarine Corp., Box 616, 1116 Adams, Waukesha, Wisc. 53186

The Aqua-Trio, 3-piece aquatic weed harvesting system (harvester, transport and shore conveyor)
The sawfish, an aquatic weed cutter and front end loader (for weed, trash and/or oil spill cleanup on water)

Aqua-Mech Co., 2609 Cedar Springs Rd., Dallas, Tex. 75201
Aqua Mech, conversion kit from manual valve and key to automatic timed heads

Aquanautics, Inc., 1246 Birchwood Dr., Sunnyvale Calif. 94086

Weedrake, underwater air boat

Aquatic Controls Corp., 1203 E. Main Waukesha, Wisc. 53186

Weedrake, underwater

Arctic Mizer Mfrs., Inc., 2116 E. Norse Ave., Cudahy, Wis. 53110

Arctic Mizer, spreader, self-powered; vacuum-thatcher, self-powered

Ariens Company, 655 W. Ryan Street, Brillion, Wis. 54110
Ariens Emperor, riding mower — 30" and 38" rotary; 8 hp
Ariens Fairway, riding mower — 26" rotary; 5 and 7 hp
Ariens S-8 Tractor, lawn tractor — 36" rotary; 8 hp
Ariens Lawn Vac, lawn vacuum
Ariens Trac-Team, 26" rotary mower, lawn vacuum, rotary broom on one 8 hp tractor

Armor Metal Products, P.O. Box 822, Helena, Montana 59601
Anderson Rock Picker, heavy-duty rock removal machine for use in seedbed preparation

Asplundh Chipper Co., Div. Asplundh Tree Expert Co., 50 East Hamilton St., Chalfont, Pa.

Chipper, high speed, tapered blade
Forestry truck, Models L-40, 42, 45, 50; dump body, 12-inch chipper, aerial bucket
Brush hooks

Arps Corp., 1711 Wisconsin Ave., New Holstein, Wis. 53061
Arps 728, backhoe, tractor-mounted
Arps 730, backhoe, tractor-mounted
Arps blades and rakes, landscaping rakes and utility blades
Johnson "Work-Horse", front-end loader, garden tractor-mounted
Johnson "Terra-Comb", combination thatcher and power-rake
Arps mini-blades and rakes, blades and rakes for garden tractors

Aurora Pump Div., N.Y. Air Brake, 800 Airport Rd., Aurora, Ill. 60542

Aurora pumps, irrigation pumps centrifugal and turbine pumps

Auto Hoe, Inc., S. 3rd St. De Pere, Wis. 54115
Auto Hoe, power hoeing machine

Avco New Idea, Farm Equip. Div., 420 S. First St., Coldwater, Ohio 45828

E650, tractor, electric driven, 14 hp
E6T-120, tractor, electric driven, 12 hp

The turf-care professionals.

Professional turf-care managers know the value of owning precision-built turf-care equipment.

Ryan equipment is made for those professionals. For those who insist on machines that perform efficiently; with a minimum of maintenance and a maximum service life.

If you'd like more information on any of these professional turf machines, send for your new, free, full-color catalog.

- ① **GREENSAIRE II***. Second generation of the Ryan coring aerator. Removes cores on 2" centers down to 3" depth.
- ② **CORE PROCESSOR***. Attaches to Greensaire II. Processes cores, picks up plant material and returns soil to green.
- ③ **SPIKEAIRE***. Disc spiker for aeration.

④ **MATAWAY***. Heavy-duty power rake, deep slicer and disc spiker.

⑤ **REN-O-THIN***. Removes thatch, grooves for seed, pulverizes aeration cores.

⑥ **TURF MINUTE-MISER***. Personnel transportation and towing ball pickers, Greensweep, utility trailer.

⑦ **GREENSWEEP***. Picks up cores, thatch, debris from greens, turf and pavement.

⑧ **SPREAD-RITE***. Top dresser, fertilizer spreader. Handles sand, too.

⑨ **TRACAIRE**. Three-point hitch turf aerator. Choice of 9 or 12 wheels.

⑩ **RENOVAIRE**. Contour design turf aerator. Interchangeable tines for coring, slicing, open spoon aerating.

⑪ **PRO-EDGE***. Professional edger.

⑫ **ROLLAIRE***. All-purpose roller.

⑬ **GROUND'S GROOMER**. Large area thatch remover, turf sweeper.

⑭ **SOD CUTTERS***. Self-propelled heavy-duty and junior models.

*Self-powered and/or propelled.



Ryan

Turf Equipment

OMC-Lincoln, A Division of
Outboard Marine Corporation
2117 Cushman Drive, Box 82409
Lincoln, Nebraska 68501



E6T-100, tractor, electric driven, 10 hp
E6T-80, tractor, electric driven, 8 hp
35 accessories available to work with all electric tractors

Avco Ezee Flow, Istand Sycamore, Coldwater, Ohio 45828
Spreaders, gravity drop, broadcast, fertilizer
Seeders, broadcast
Mowers, rotary
Applicators, granular, insecticide-herbicide

B

B.A.G. Corporation, 9443 Sherwood Glen, P.O. Box 28403,
Dallas, Texas 75228

Tacon Container, plastic, collapsible, reusable shipping
container for handling bulk shipments
Super sack container, one-ton disposable container

BMB Company, Inc., North Vermont at 9th, Holton, Kansas
66436

Utility, 5' tractor operated rotary mower
Special, 6' tractor operated rotary mower
XL and Brute, 5' and 6' tractor operated rotary mower
Fury, 7' tractor operated rotary mower
Twin Brute 120 and 144, 10, and 12, tractor operated
rotary mower
Twin Fury 144 and 160, 12 and 13'4" tractor operated
rotary mower
Mighty Mower, 15, 18' and 20' flexible tractor operated
rotary mower
Suburban 48, 48" trailing rotary mower w/ 8 hp gas
engine
BMB Flail Mowers, 72", 90", 144" and 180" tractor
operated

Baker Equipment Mfg. Co., 1710 High Point Ave., Richmond,
Va. 23230

Aerial towers, mobile equipment
Derricks, mobile equipment

Bartlett Mfg. Co., 3024 East Grand Blvd., Detroit, Mich.
48202

Saws, tree, combination pruner and saw
Saw, pruning, hand
Saw sheaths
Tree bracing materials

Bar-Way Mfg. Co., P.O. Box 640, Stamford, Conn., 06904
Spray guns, long-range, worm-gear control on end of
barrel

John Bean Div., FMC Corp., 1305 S. Cedar St. Lansing, Mich.
Sprayers, hydraulic, all-purpose, pull-type, stainless steel
tanks
Mistblowers, truck mounted, nozzle parts
Flamethrowers, (sprayers)

Beatty Trailers, Box 1027, Burlington, N.C., 27215
Beatty Trailers, self-contained, hydraulic dump;
capacities 2, 3, 5, 9, 13 yard; transport trailers, 6 to 30,000
lb. capacity; tag-a-long and goose neck

Beck Manufacturing Company, P.O. Box 752, Auburn,
Alabama 36830

Lawn-O-Matic, turf grass planter, plugger — sprigger
Sod-O-Matic sod cutter, sod cutter cuts 3 16" strips at one
time
Sod-O-Matic sod harvester, Beck's big roll — sod
harvesting and laying system

Beeco Products Co., Fort Washington, Pa.
Beeco-Mist, spray sleeve, Model 275 spray head

Bell Helicopter Co., P.O. Box 482, Fort Worth, Texas
Helicopters

Bemis Company, Inc., 800 Northstar Center, Box 215,
Minneapolis, Minn. 55402

Bags and liners, plastic
Bags, tree balling, litter, grass catcher
Twine, tying

Wm. Bergman Co., 1335 M-15, Reese, Mich. 48757
Service, stone picking, seeding, land preparation

Berkeley Pump Co., 829 Bancroft Way, Berkeley, Calif. 94702
Pumps, electric and gasoline; irrigation, one to forty hp,
higher hp available, centrifugal and turbine

Bermuda King, Inc., Rte. 1, Okarche, Okla. 73762
Sprig harvesters, 20", 28", 42", 30 to 60 hp, 500 to 1,000
watt an hour rating
Sprig planters, 1, 2, 3 and 4-row, large capacity
Fairway spriggers, 2 to 10' width, large capacity

Bete Fog Nozzle, Inc., Greenfield, Mass.
Stubbies, nozzles, mini-sized, three cone angles, flow rates
from 3 to 300 gpm

Big Brute Turf Cut, Div. of Finney Frocks, 18035 Georgia
Ave., Olney, Md. 20832
Big Brute turf cutter, sodcutter

Big "J" Products, Route 1, Hanna, Indiana 46340
Sod harvester, dual palleted

Billy Goat, P.O. Box 229, Grandview, Mo. 64030
Billy Goat, suction sweeper
Winro, leaf blowers Shred-N-Bag, shredder
Chippit, chippers, vacuums

Black & Decker 701 E. Joppa Road, Towson, Md. 21204
Lawn mowers, electric rotary
Grass shears, battery powered (re-chargeable)
Hedge trimmers, 13" to 22" Black Knight—both electric
and battery
Lawn edgers, electric
Patio vacs, 5 and 10 gallon dry and 8 gallon wet/dry
Garden hose connectors, complete line of hose fittings

John Blue Co., P.O. Box 1607, Huntsville, Ala. 35807
Spreaders, fertilizers (liquid, dry, bulk)
Tanks, spray and fertilizer
Sprayers, mounted and pull type, rights-of-way

Bombardier limited Valcourt, Quebec, Canada
Muskeg brush cutter, tracked veicle (90 hp) equipped with
front-mounted hydraulic rotary brush cutter
Muskeg carrier, tracked vehicle (90 hp) with spraying
equipment

Bowie Industries P.O. Box 931, Bowie, Texas 76230
Hydro mulcher—used in sprigging, seeding, mulching,
fertilizing, insect control and weed control 350, 500, 800,
1,000, 1,500, 2,500 and 3,000 gallon tanks. Trailer or skid-
mounted
Agri-sprayer, multi-purpose low volumn 400 gallon
sprayer, fiberglass tank trailer-mounted, remote hydraulic
operation. P.T.O.

Bridgeport Implement Works, Inc., 60 Rachel Drive, Strat-
ford, Conn. 06497

Pixtone, trailer-type—self-powered, picks stone ¾ to 9-
inch diameter

Briggs & Stratton Corp., P.O. Box 702, Milwaukee, Wis.
53502

Engines, 4-cycle, single cylinder, gasoline

Brillion Iron Works, 200 Park Ave., Brillion Wis. 54110
Mow-Safe, safety flail mowers (72" and 88")
Swing-Cut, rotary mower (60" and 72")
Turf-Maker, seeder for sod-growers
Sure-stand, landscape and agricultural seeders
Terra-Scraper, landscape rakes
Versa-Mower, 180" rotary cutters

Brinly Hardy Co., Inc., P.O. Box 1116, Louisville, Ky. 40201

Cut labor costs by 95% Save up to 30% on fertilizer . . .

The METER MATIC fertilizes automatically every time you water.



Every professional golf course superintendent knows the advantages of automatic fertilization and watering systems. These systems save labor and material costs by watering and fertilizing your course in the same operation. Of the many liquid fertilizer injector systems on the market, the Andrasko Company Meter Matic is the only system with all the important features required by professional golf course superintendents: The Meter Matic is safe, accurate, and economical for all your fertilization and watering operations.

Regardless of water pressure or volume the proportion of fertilizer to water will remain constant. Meter Matic absolutely eliminates under or over feeding that may occur with other systems.

The steady use of the system will not only surface feed but will get down to the roots and constantly feed instead of delivering large amounts at one time.

Meter Matic is volume sensitive and will run as little as eight gallons of water per minute without reducing pipeline pressure. The Meter Matic is easily installed on 1" to 12" water lines and requires no by-pass plumbing, up-stream straining, or down-stream mixing.

The Meter Matic is easy to operate using a single control knob to select five mixture ratios of fertilizer to water at 98% accuracy and almost entirely eliminates labor costs.

| Model | Pipe Size | Water Flow | |
|--------|-----------|------------|--------|
| | | Max. | Min. |
| 1570 | 1" | 40 GPM | 3 GPM |
| 3141 | 2" | 150 GPM | 5 GPM |
| 7065 | 3" | 325 GPM | 10 GPM |
| 12568 | 4" | 550 GPM | 20 GPM |
| 28274 | 6" | 1500 GPM | 30 GPM |
| 50240 | 8" | 3000 GPM | 40 GPM |
| 113040 | 12" | 9000 GPM | 60 GPM |

For additional information and price list please write or call us.

Andrasko Engineering Co.

P.O. Box 4633 • Santa Barbara, Ca. 93103
(805) 963-9413

Brinly attachments, gardening and landscape equipment for tractors equipped with sleeve type hitch
Brinly implements, gardening and landscape equipment for tractors equipped with Cat. "O" 3-pt. hitch
Brinly lawn maintenance equipment, pull behind equipment such as roller, aerators, broadcast spreaders

Brower Turf Equipment Limited R.R. No. 1, Keswick, Ontario, Canada

Sod harvester, attached to a 35-40 hp farm tractor

The Broyhill Company, No. Mkt. Sq., Dakota City, Nebr. 68731

Sprayer, skid-mounted, mechanical agitation
Sprayers, trailer mounted, mechanical agitation
Sprayer parts: pumps, hose, tanks, trailers, nozzles, handguns, spring boom

Buckner/Johns Manville Irrigation, Greenwood Plaza, Denver, Col. 80217

Full line irrigation, automatic electric controllers, impulse sprinklers, valve-in-head sprinklers, quick couplers, pop-up sprinklers, hydraulic controllers, valves

Buffalo Turbine Ag. Equipment Co., Industrial Place Gowanda, N.Y. 14070

Sprayer, mist blower, ULV hand carried, sonic ULV, mist blower, turntable
Sprayer-duster, mist duster, combination
Duster, dust only
Sprayer-duster, back pack, power take-off

Bunton Co., 4303 Poplar Level Rd., Louisville, Ky. 40213

Mowers, rotary
Lawn and turf equipment

C

E. L. Caldwell & Sons, Inc., 3204 Agnes St., P.O. Box 9316, Corpus Christi, Tex. 78408

Interstate, rotary mower, 15 ft.
Challenger, rotary mower
Manta Ray Interstate, rotary mower, 10 ft.
Brush Beaver, rotary mower, 5 ft. or 6 ft.
Manta Ray, Jr., rotary mower, 16 ft.
Contur Flail, heavy-duty, flexible flail, 15 ft., 3 sections
Shark-go, flail-type shredder, 90 inches
Barracuda, lift-type flail mower, 72-inch

CareTree Systems 7030 Huntley Rd., Worthington, Ohio 43085

CareTree transplanter, tree transplanter for installation on agricultural or industrial tractors or 4-wheel loaders

Cast Iron Pipe Res. Assoc., 1211 W. 22nd, Oakbrook Exec. Plaza, Suite 23, Oakbrook, Ill. 60521

Cast iron pipe for irrigation

Campbell-Hausfeld Co., Sales Ave., Harrison, Ohio 45030

CH "1000", Saw, chain, electric, 12-inch bar, 12 amps
CH "2000", saw, chain, gasoline, 12-inch bar, 6 1/2 lbs.
CH "00", saw, chain, gasoline, 16-inch bar
CH "3001", saw, chain, gasoline, 1/2 "anti-vibe", 16-inch bar, auto oiler
CH "3002", saw, chain, gasoline, 1/2 "anti-vibe", 20-inch bar, auto oiler
CH "3003", saw, chain, gasoline, full "anti-vibe", 20-inch bar, auto oiler

J I Case, 700 State St., Racine, Wisconsin 53404

Blades, tractor mounted, scraper and scarifier
Lawn carts
Tractors, 8 hp and up
Forklifts, tractor mounted
Loader, compact, self-propelled
Mowers, rotary

Snow blowers

Tractors, low center of gravity

Trenchers

Century Engineering Corporation, 221—4th Ave. S. E., Cedar Rapids, Iowa 52401

Sprayers, trailer, tractor, jet or mechanical agitation
Washers, high pressure
Heaters, portable oil and gas

Certain-Teed/Daymond Co. 230 Collingwood, Suite 150, Ann Arbor, Mich. 48103

Certa-Flex, corrugated plastic tubings of various diameters for land drainage and trickle — irrigation

Certain-teed Pipe & Plastics Group, Valley Forge, Pa. 19481

Certain-teed PVC pipe, irrigation; choice of Fluid-Tite™ double gasket joints or solvent-weld joints
Fittings, irrigation pipe

Champion Brass Mfg., 1460 N. Naud St., Los Angeles, Calif. 90012

Champion 466, 466P, anti syphon valves
Champion 17, 18, 19, lawn sprinklers, flush, popup, shrub
Champion E.A., C.E.A., electric adapters

The Champion Company, 400 Harrison St., Springfield, Ohio 4550

Doo-All Roll-Dump Trailer, 1 and 2 cu. yd. hopper capacities
Doo-All End-Dump Trailer, 3 cu. yd. hopper, hydraulic dump

Charles Machine Works, Inc., P.O. Box 66, Perry, Okla. 73077

Ditch Witch trenchers, 7 hp to 195 hp vibratory plows, backhoes, trencher mounted trailers, horizontal boring units

Clark Equipment Trailer Division, P.O. Box 410, Michigan City, Indiana 46360

Clark Equipment mini trailers, a 22 and 30 ft. flatbed trailer designed for use with 5th wheel connecting pick up trucks.

Clinton Engines Corporation, Clark & Maple Streets, Maquoketa, Iowa 52060

Engines, gasoline

Club Car, Inc., P.O. Box 897, Augusta, Georgia 30903

Caroche, four-wheel electric golf car (2 passengers)
Caroche Utility Truck, four-wheel electric utility truck (2 passenger and 500 lb. load)
Caroche Personnel Carrier, Four-wheel electric (4 passengers)
Caroche Islander, combination commuter & golf car

Container Development Corp., 424 Montgomery St., Watertown, Wisconsin 53094

Golf course equipment

Contree Sales, Inc., P.O. Box 129, Columbus, Wis. 53925

Rice Paddy Daddy, sprayer
Boom Dye-Marker, marks areas treated
Wat Sol Oil, lubrication, preservative, storage oil
Auger, Model S.S., 4-inch, 12 volt for materials handling

Conwed Corporation, 2200 Highcrest Road, St. Paul, Minn. 55113

Conwed Hydro T-M Mulch, a wood fiber mulch used in hydro seeding
Conwed Economy Erosion Control Netting, tough plastic net used over loose mulches in high erosion areas

Cooper Mfg. Co., 422 S. First Ave., Mardhaltown, Iowa 50158

Edgers, gasoline powered
Mowers, reel, walking
Champion 21, greensmower