

Lead arsenate, insecticide
 Dalapon, insecticide
 Dichlone, fungicide
 Systox, insecticide
 Tedion® Tetradifon, miticide
 Arsenical compounds, insecticide
 DDD (TDE), insecticide
 DNOC, fungicide
 Endosulfan, Thiodan, insecticide
 Guthion Azinphosmethyl, insecticide
 Lindane, insecticide
 Methyl Parathion, insecticide
 Oils, insecticide, dormant and summer
 Parathion, insecticide
 Phorate Thimet, insecticide
 Pyrethrins, insecticide
 Pyrenone®, Synergized Pyrethrins, insecticide
 Sevin carbaryl, insecticide
 Sinox®, herbicide
 Copper Sulfate, tri-basic, fungicide
 Cyprex, fungicide
 Ferbam, fungicide
 Maneb, fungicide
 Polyram, fungicide
 Sulfur, fungicide
 Synthrin® resmethrin, insecticide
 Tetralate® resmethrin + Neo Pynamin, insecticide
 Thiram, fungicide
 Zineb, fungicide
 Ziram, fungicide

Nor-Am Agricultural Products, Inc., 20 N. Wacker Dr.,
 Chicago, Illinois 60606

Fundal, insecticide
 Zip, animal repellent

North American Rockwell, P.O. Box 1748, Albany, Georgia
 31702

Thrush Commander, multi purpose agricultural aircraft

Albert R. Norton Products, Oakland, California
 Universal tie downs, for trucks, machined steel and
 chrome plated, eye diameter is one inch

Nugget (Pickseed West), Box 217, Albany, Oregon 97321
 Nugget, Kentucky Bluegrass

John Nunes Mechanical Harvesting Co., 2518 Loquat Ave.,
 Patterson, California 95363

Mechanical Sod Harvester, will cut, lift, roll or slab and
 palletize more than 1000 sq. yds. of sod per hour, handles
 rolls or slabs 12 to 20 inches wide

Nursery Specialty Products Co., 410 Greenwich Ave.,
 Greenwich, Conn. 06830

Wilt Pruf®, anti-transpirant, combats transplanting shock

O

Oberdorfer Foundries, Inc., Agricultural Pump Div., Thomp-
 son Rd., Syracuse, N.Y. 13201

Pumps, bronze and aluminum, rotary gear, rubber im-
 peller, rubber collar, centrifugal, helical rotor

Oil-Dri Corporation of America, 520 North Michigan Ave.,
 Chicago, Illinois 60611

Terra-Green, soil conditioner

Omark Industries, Inc., Oregon Saw Chain Division, 9701 S.E.
 McLoughlin Blvd., Portland, Oregon 97222

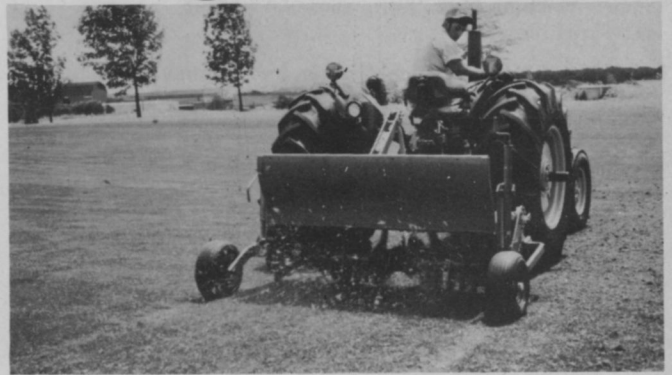
Oregon saw chain, saw chain and accessory items
 Oregon Power Mate and Super-tronic saw bars
 Oregon Power Mate rim and drum sprockets

Omsteel Products, Inc., 4625 Farnam St., Omaha, Nebr. 68132
 Trencher

Onan Div., Studebaker Corp., 1400 73rd Ave. N.E.,
 Minneapolis, Minnesota 55432

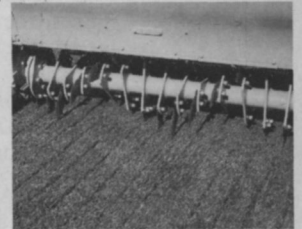
Generators

It's not just another slicing machine



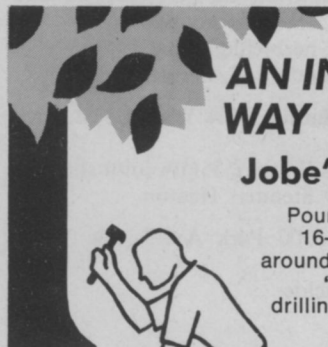
IT DOES MUCH MORE... IT PROVIDES **TOTAL TURF AERIFICATION**... In a single pass, the new Howard TURF-QUAKER will completely relieve compaction, remove excess thatch, and open the soil for water and nutrients. It uses a unique auger-like blade pattern that slices into compacted turf, rapidly moving it from side to side with a firm shaking action that loosens it down to the roots. The turf is left completely open to all the water and nutrients it needs.

TURF-QUAKERS are available in tractor-mounted and hand operated models. For complete information write: HOWARD ROTAVATOR CO., INC. Dept. 389, Harvard, Illinois 60033
 A Member of the Rotary Hoes Group of Companies



**HOWARD
 ROTAVATOR**

For More Details Circle (113) on Reply Card



AN INCREDIBLE NEW WAY TO FEED TREES!

Jobe's Tree Food Spikes

Pound these spikes of high-analysis 16-8-8 fertilizer into the ground around trees, and rain does the rest.

"Nearly three times faster than drilling," states a leading university.

Write us for details plus the university report.

INTERNATIONAL SPIKE, INC.
 462 East High Street
 Lexington, Kentucky 40508

For More Details Circle (128) on Reply Card

CROWN VETCH

We stock most seed varieties - certified and uncertified. CROWN VETCH CROWNS. CROWN VETCH PLANTS. (Pa. and north-eastern states only.)

Write or phone for literature & prices. Advise quantity.

STANFORD SEED COMPANY

Post Office Box 230
 Plymouth Meeting, Pa. 19462
 Phone: 215 - 825-1240

Post Office Box 366
 Buffalo, N. Y. 14240
 Phone: 716 - 825-3300

For More Details Circle (119) on Reply Card

Oregon Chewings & Creeping Red Fescue Commission, P.O. Box 3076, Salem, Oregon 97302
Chewings and Creeping Red Fescue, seed

P

Papec Machine Co., Shortsville, N.Y. 14548
Leaf blower

Parco Div., National Foam System, Inc. Union and Adams Sy., Westchester, Pa. 19380
Dragon Model 180, backpack sprayer
Super Drench, wetting agent

Parker Sweeper Company, P.O. Box 720, Springfield, Ohio 45501

Parker Lawn Sweepers, brush type lawn sweepers, manual
Parker Lawn Vacuums, scavenger lawn vacuum
Power Rakes, tine, knife or flail unit available
Power Lawn Sweepers, self propelled, brush type
Trailing Lawn Sweepers, brush type lawn sweeper

Partner Industries of America, Inc., 2737 W. Fulton, Chicago, Illinois 60612

Chain saws, six models, 10½-17 lbs. weight, automatic chain oiler

S. B. Penick & Co., 100 Church St., New York, N.Y. 10007

Pyrethrins, insecticide
Rotenone, insecticide
Ryania, insecticide
Pyrethrum-Ryania, insecticide
Resmethrin (SBP-1382), insecticide
Pyrethrum-Ryania-Rotenone (Tri-Excel-DS), insecticide

Pennwalt Corporation, Agchem-Decco, 1713 South California Ave., Monrovia, California 91016

Aquathol® endothall, herbicide, aquatic
Aquathol Plus® endothall and Silvex, herbicide, aquatic
Hydrothol® 47 endothall, herbicide, aquatic
Hydrothol® 191 endothall, herbicide, aquatic
Endothal Turf Herbicide, endothall, herbicide, turf

Pest Control Operators of California, 3444 West 1st St., Los Angeles, California 90004

Educational Training Slides (Insect), 35mm color slides of live insects and biology by Stennett Heaton

Phelps-Dodge Refining Corp., 300 Park Ave., New York, N.Y. 10022

Basic copper sulfate, fungicide
Copper sulfate, fungicide

Pitman Manufacturing Co., Div. A. B. Chance Co., Grandview, Mo.

Mobilift, aerial bucket

Piqua Engineering, Inc., 234 First St., Piqua, Ohio 45356

Lickity Log Splitter
Lickity Brush Chipper

Plant Marvel Laboratories, 622 West 119th St., Chicago, Illinois 60628

Water-soluble fertilizers, fertilizers, quick foliar/root absorption

Liquid fertilizers, fertilizers, quick foliar/root absorption

Plants For You, R.R. 3, Urbana, Illinois 61801

Crownvetch, pot-grown plants, Penngift or Emerald varieties

H. K. Porter, Inc., 74 Foley St., Somerville, Mass. 02143

Cutters, bolt, rod, cable, chain, etc.
Shears, lopping
Trimmers, tree
Shears, pruning
Cutters, brush and root

Beaird-Poulan, Inc., 5320 Greenwood Rd., Shreveport, La. 71109

Poulan chain saws, 12 models, manual and dual system chain oiler, 14-31 inch bar length
Power Equipment

Precision Chipper Corporation, P.O. Box 5513, Birmingham, Alabama 35207

Chipper, Model 75 tree destroyer, heavy duty, industrial, feed thru rate of about 125 feet per minute

Premier Peat Moss Corporation, 25 West 45th St., New York, N.Y. 10036

Hi-Orgnite, peat humus
Bark mulch
Potting Soils

Prentiss Drug & Chemical Co., Inc., 363 7th Ave., New York, N.Y. 10001

Chlordane, insecticide
Pyrethrum, insecticide
Malathion, insecticide
Diazinon®, insecticide
Aerosol concentrates, insecticide
Warfarin, rodenticide
Rotenone, insecticide
Lindane, insecticide
Baygon®, insecticide
Dursban®, insecticide
DDVP, insecticide

Princeton Manufacturing Co., P.O. Box 1, Canal Winchester, Ohio 43110

Princeton Sod Harvester, self-propelled, cuts slabs 20x40 inches, loads onto 50 yard pallets, dropped by a self contained forklift, up to 1500 sq. yds. per hour in one operation

Princeton Turf Farms, Inc., Old York Road, P.O. Box 245, Hightstown, New Jersey 08520

Cultivated Turf

Product Development International, 200 Sylvan Ave., Rutledge, Pennsylvania 19070

Larry's Magic Knot, arborist tool
Climber's strap
Universal power saw holder, arborist equipment

Public Health Equipment & Supply Co., 1720 South Presa St., San Antonio, Texas 78210

Swingfog high performance fog machine, thermal aerosol generator
Fontan knapsack duster-sprayer, ULV, sprayer-duster knapsack type
Combi-Fog all purpose unit
Flame thrower, (weed burner) fogger
Badger duster
Compressed Air dust blower
Hatsuta Industrial Deluxe, rotary granule dispenser
PVC high pressure hoses, all sizes
Precision Equip. Prod. "PEP"
Hi Pressure Sprayers w/fiberglass tanks
All Parts Supplier, scarce and obsolete parts for many types fogging machines

Q

Quality Marsh Equipment, P.O. Box 406, Thibodaux, Louisiana 70301

Drainage equipment

R

Rainbird Sprinkler Mfg. Corp., 7045 N. Grand Ave., Glendora, California 91740

Electric Irrigation Clocks/controllers, RC-3, RC-8, RC-12, RC-23, master controllers, multi-path
Automatic Valve, thermal hydraulic valves, 1-2 inches; electric valves, ¾-6 inches

Impulse sprinklers
 Rotor pop up sprinklers
 Pop up spray heads
 Impact sprinklers
 Valve-in-head sprinklers
 Quick coupling valves, 1/2 inch to 1 1/2 inches
 Rain gun sprinklers

Rain Jet Corporation, 301 S. Flower St., Burbank, Calif. 91503
 Sprinklers, choice of patterns, component parts,
 minimum number of heads need to perform job

Rain-O-Mat Sprinklers, Inc., P.O. Box 151, Whittier, California 90608

Sprinkler equipment including: rotors, lawn sprays, shrub sprays, impact irrigators, quick couplers, automatic controllers, automatic valves, valve adaptors, bubblers, strainers

Ralston Purina Company, Checkerboard Square, St. Louis, Missouri 63188

Algae Chek, aquatic herbicide
 Cygon 2E Insecticide dimethoate, insecticide
 Malathion Spray malathion, insecticide
 Chlordane 2E Insecticide chlordane, insecticide
 Chlordane Insecticide 45E, insecticide
 Crabgrass kill benefin, herbicide
 Diazinon spray diazinon, insecticide
 Cap-Zin fungicide captan-zineb, fungicide
 Fruit Tree Spray malathion-methoxychlor-captan, insecticide, fungicide
 Grass Killer Bar dalapon, herbicide
 Lawn Weed Killer 2,4-D; silvex, herbicide
 Ornamental Spray malathion; chlordane, insecticide
 Sevin Insecticide Spray carbaryl, insecticide

Systemic Bug Killer disulfoton, insecticide
 Grass-N-Weed Vegetation Killer triazine-pentachlorophenol, herbicide
 Weed-Kill Granules trifluralin, herbicide
 Weed Kill (Pressurized) 2,4+D; dicamba, herbicide

Randustrial Corporation, 13225 Union Ave., Cleveland, Ohio 44120

Flash® Deicer, ice melter
 Herbicides, bareground

Ra-Pid-Gro Corporation, 88 Ossian, Dansville, N.Y.

Ra-Pid-Gro, fertilizer, 23-19-17, dissolve in water, sprinkle or spray; no burning

Raven Industries, Box 1007, Sioux Falls, South Dakota 57101

Fiberglass tanks
 Rhino Polyethylene tanks

Reach-All Manufacturing and Engineering Co., 436 Calvary Rd., Duluth, Minnesota 55803

Crane and aerial buckets, hydraulically operated, 24-125 ft. reach

Red Ewald, Inc., P.O. Box 1167, Karnes City, Texas 78118

Spray Rig, 50 gal. skid spray rig with hose and handgun, 5 hp engine, roller pump with optional boomless jet spray nozzle

Reinco, Inc., P.O. Box 584, Plainfield, New Jersey 07061

Terra Tack, erosion control product, earth binder, mulch tack

Reinco, power mulcher (straw blower)

Reinco, hydrograsser

Rental Equipment Mfg. Co., 2778 South Tejon St., Englewood, Colorado 80110

"Bluebird" Lawn Comber, 4, 5 and 7 hp thatching mach.



BECK'S BIG ROLL SOD HARVESTING AND LAYING SYSTEM . . . For Progressive Sod Growers



Harvest, load, and lay sod FAST, without manual lifting or handling. Let tractors do the hard work. Hand stacking and laying of sod is obsolete. Increases sales by cutting time and cost of installation. Stretches sod 3% to 5%, leaves lawns smoother, with fewer seams and joints. Disposable cardboard tubes are lighter and cheaper than pallets, permit easy loading, as many as 3 rolls at a time, with any fork lift, laying with any tractor.

No need to change over completely. Switch from Big Rolls to your present system in 5 minutes or less. This simple, rugged system can be had for as little as \$100/month.

For more information, write:
BECK MANUFACTURING COMPANY
 P.O. Box 752 • Auburn, Alabama 36830
 Tel. (205) 887-3730

BECK
 MANUFACTURING CO.

- "Bluebird" Sweeper, powered, self propelled lawn sweeper
 "Bluebird" K-D Crane, 1500 lb. cap., knock-down engine crane
 "Bluebird" Tip-Tow Crane, 3000 lb. cap., towable engine crane
 "Bluebird" Engine Stand, 750 lb. cap. engine stand
 "Bluebird" Engine Sling, 2500 lb. cap. hvy. duty, adjustable, engine sling
- Republic Aviation Corp., Helicopter Div., Farmingdale, L.I., N.Y.
 Helicopters
- Retzloff Chemical Co., P.O. Box 45296, Houston, Texas 77045
 Adsee 50, 80, 85, 90, 100-80, wetting and sticking agent
 Sponto 206, 207, 208, 228, 232, 234, 900, emulsifier
- Rhodia Inc., Chipman Div., 120 Jersey Ave., New Brunswick, N.J. 08903
 Chip-Cal tri-calcium arsenate, herbicide, preemergent
 Chipco Turf Herbicide MCP, herbicide, postemergent
 Chipco Turf Klee, herbicide, postemergent
 Chipco Turf Herbicide D, herbicide, postemergent
 Chipco Spot Kleen, dimethyl thiophanate, fungicide
 Chipco Microgreen, fertilizer, liquid
 Sup'R-Flo maneb, fungicide, flowable
 Chipco Buctril, herbicide
- Ridge Plastics Co., Highway 18 East, P.O. Box 2205, Jonesboro, Arkansas 72401
 Biaxially oriented HD plastic pipe, sub-irrigation
- Robco, Inc., 2800 Bay Rd., P.O. Box 5326, Redwood City, Calif. 94063
 Robco-Hatsuta Back-pack sprayer, duster, blower, sprayer
 Robco high pressure vinyl spray hose, sprayer parts and equipment
 Robco high pressure piston pumps, sprayer pumps
 Robco Air-Lite duster, hand duster for applying dusts and granules
- Rockland Chemical Co., Inc., P.O. Box 204, Caldwell, New Jersey 07006
 Rockland: Professional Greener Lawn, fertilizer (slow release)
 Professional Crabgrass Preventer with Tupersan, herbicide
 Professional Crabgrass Preventer with Dacthal, herbicide
 Professional Diazinon Chinch Bug Killer, insecticide
 Professional Dursban Cinch Bug Killer, insecticide
- Rohm and Haas Company, Independence Mall West, Philadelphia, Pennsylvania 19105
 Kerb[®], herbicide, pre- and postemergent
 Fore[®], fungicide, turf and ornamentals
 Karathane[®] dinocap, fungicide and miticide
 Kelthane[®], miticide
- Roof Manufacturing Co., 1011 W. Howard St., Pontiac, Ill. 61764
 Ranger, mower, self-propelled, tilt blade for heavy cutting, 5 hp or 7 hp, 24 inch or 26 inch cut
 Roof 400, mower, push, blade clutch, 5 hp, 21 inch or 24 inch cut, belt driven blade
- Roper Corporation, 1905 W. Court St., Kankakee, Ill. 60901
 Chain Saws, manual, automatic and dual system chain oiler
- Rosco Manufacturing Co., 3118 Snelling Ave. So., Minneapolis, Minn. 55406
 Rollpac, steel wheeled roller, lawn, asphalt paths, etc.
- Roseman Mower Corporation, 2300 Chestnut, Glenview, Ill.
 Mowers, reel; 3, 5, 7 and 9 gang, pull behind and hydraulic
- Root-Lowell Corporation, 1000 Foreman Rd., Lowell, Michigan 49331
 Durapower Sprayers, power sprayer, tank type, piston pump
 Automist Electric Mistblowers, electric power, porable 1 1/2-5 gals.
 Automite Electric Duster
 R-L Duster, rotary, crank operated
 Sure-Seal Sprayers, compressed-air, 2-4 gals.
 Seal-Tight Sprayers, compressed-air, 3-4 gals.
 Lofstrand Sprayers, compressed-air, 3 gals.
 Loyalty Sprayers, compressed-air, 2-3 gals.
- Roto-Hoe Co., Newbury, Ohio 44065
 Cut 'N Shred, shredder, 3 1/2 hp, interchangeable with tiller
- Rowco Mfg. Co., Inc., 48 Emerald St., Keene, N.H. 03431
 Brushking[®], brush cutter, engine driven
- Roxy-Bonner, Inc., 2000 Pioneer Rd., Huntingdon Valley, Pa. 19006
 Roxy, mower, gang
 Lawnshear, mower, gang
 Ideal, mower, gang
- Royer Foundry & Machine Co., 158 Pringle St., Kingston, Penna. 18704
 Royer Shredder, cleated belt shredder (soil, sand, peat, compost)
 Royer Powerscreen, vibrating screen
- Ryan Equipment, Outboard Maine Corporation, P.O. Box 82409, Lincoln, Nebraska 68501
 Ryan Turf Equipment, mowers, rotary and flail; aerators, spikers, ground grooming equipment
- Joseph T. Ryerson & Son, Inc., P.O. Box 8000-A, Chicago, Ill. 60680
 Landscape Edging, steel

S

- S & D Products, Inc., P.O. Box 66, Prairie du Chien, Wisconsin 53821
 Eeesy Grow-Root contact Paket, fertilizer, slow release
- S & H Industries, Inc., Cleveland, Ohio
 Tailgate, for pickups, electric-hydraulic, handle loads up to 1000 lbs.
- Sabre Saw Chain, Inc., Third Ave. & Sabre Drive, Niagara Falls, New York 14304
 Sabre Saw Chain
 Sabre Guide Bars
 Sabre Sprockets
 Sabre Wedges
 Sabre Files
 Sabre Accessories
- Safeline Products, P.O. Box 550, Putnam, Conn. 06260
 Respirators (all types), lung protection
 Safety Glasses and goggles, eye and face protection
 Hearing protectors, muff-type and ear plugs
 Hard hats and caps, plastic safety hats and caps
- Safety Test & Equipment Co., Inc., P.O. Box 898, Shelby, N.C.
 Wood Chuck[®], chipper, blades are V-grooved, shallow blade angle to slice chips away, mounted on 2-wheel trailer
- Schutt's Equipment Co., Birmingham, Michigan
 Backhoe Digger
- M. J. Scott Co., P.O. Box 1097, Hutchinson, Kan. 67501
 Grasshopper, mower, riding, 10 hp, electric start, compact design, zero turning radius, flex-action
- The O. M. Scott & Sons Co., 160 Main St., Marysville, Ohio
 Pro+turf[™] fertilizer

Pro-Turf™ Starter fertilizer
 Pro-Turf™ field fertilizer
 Plus-2, herbicide
 Pro-Turf™ insecticide
 Pro-Turf™ fungicide
 Spot Weeder, herbicide
 Super Halts Plus, herbicide
 Super Turf Builder Plus M, fertilizer

Sea Guard, Inc., 1501 Reybold Drive, New Castle, Del. 19720
 N-Bar™, floating barrier to hold back aquatic vegetation

Seed Production Introduction Corp., P.O. Box 923,
 Minneapolis, Minnesota 55417
 Pennstar Kentucky Bluegrass, turfgrass seed
 Pennfine Perennial Ryegrass, turfgrass seed

Selma Trailer and Mfg. Co., P.O. Box 120, Selma, Calif. 93662
 Trailers, hydraulic; 4x8, 6x8, 6x12 ft., drive or push load
 on bed
 Lifts, scissors type, triple-tier, Model SM-41

Servis Equipment Co., Box 1590, Dallas, Texas 75221
 Box Scrapers, hydraulic, automatic lift-trip, hand-lift,
 Seco Jr. models; curved blades cut and roll soil
 Flex XV, mower, rotary, PTO driven, 15 ft. swath, in-
 dependent gear boxes, wings raise hydraulically
 Saturn V and VI, mower, rotary, PTO driven 5-6 ft. cut
 Little Rino, landscape rake, 2 models
 Gold Star, digger and utility crane

Sewerage Commission of the City of Milwaukee, P.O. Box
 2079, Milwaukee, Wisconsin 53201
 Milorganite fertilizer, fertilizer slow release

Seymour Smith & Son, Inc., 900 Main St., Oakville, Conn.
 06779

Garden Tools, pruning shears, grass shears, hedge shears,
 lopping shears, tree pruners, pruning saws

Shell Chemical, 2401 Crow Canyon Rd., San Ramon, Calif.
 94583

Akton® 2E, insecticide
 Nemagon®, insecticide fumigant

The Sherwin-Williams Co., 101 Prospect, Cleveland, Ohio
 Karbam® Black ferban, fungicide
 Mulsoid Sulfur Micronized Wettable Sulfur, fungicide
 Sherwin-Williams Arsenate of Lead, insecticide

Side-Winder Plant, Div. of FMC Corporation, P.O. Box 818,
 Minden, La. 71055
 Leveler, land
 Tillers

Sierra Chemical Company, 37650 Sycamore St., Newark,
 Calif. 94560

Agriform Fertilizers, slow release 16-7-12 (+ iron)
 Agriform Planting Tablets, landscape fertilizer
 Agriform Container Tablets, fertilizer for feeding woody
 and herbaceous plants in containers

Sikorsky Aviation Div., United Aircraft Corp., Stratford,
 Conn.
 Aircraft, helicopter

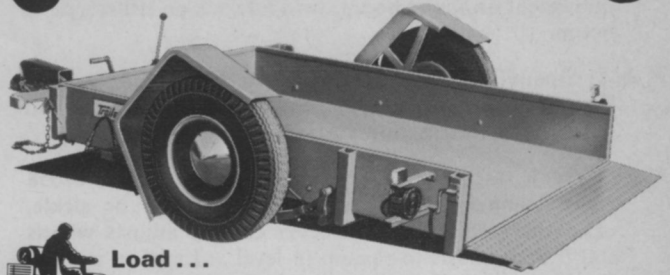
Simplex Manufacturing Co., 5224 N.E. 42nd Ave., Portland,
 Oregon 97218
 Greenhouses

Simplicity Mfg. Co., Inc., Spring St., Port Washington,
 Wisconsin 53074

Tillers
 Tractors
 Rollers, turf
 Mowers, rotary; reel, gang; sicklebar

Skaggs Turf Equipment Co., Canfield, Ohio
 Trap Tender, rake, sandtrap, self-propelled

One Manhandling



It's easy
 with Trailevator.

The hydraulic elevating trailer
 that lowers to ground level

for fast 'roll-aboard' loading—

then lifts its own load to hauling position in just seconds

Handles loads up to 3,000 lbs.*; lifts and lowers without

uncoupling from the towing vehicle. Standard trailer

hitch quickly attaches to car, truck or tractor. Try a

one-man Trailevator. It'll make you a one-trailer man.

Magline, Inc., Pinconning, Mich. 48650, P.O. Box 2012

*Other Models to 5,000 lbs.

TRAILEVATOR

The Hydraulic Elevating Trailer

For More Details Circle (140) on Reply Card

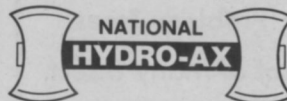
clear brush fast.

With National's new
 HYDRO-AX. This hydraulically driven cutter reduces
 dense, heavy underbrush

and small trees to a chopped-up ground cover in
 just one pass. One man can clear up to 1½
 acres per hour — faster and more economically
 than burning or chemical control.

Ideal for brush control on power lines, fence lines,
 highway and railroad right-of-ways, the
 HYDRO-AX cuts an 8 ft. wide swath. Features
 include: articulated power steering; 17½ ft. turning
 radius; 4-wheel hydrostatic drive; wire-reinforced
 high floatation tires. Works year-round in
 all types of weather.

Write or call for details.



P.O. Box 568 • Owatonna, Minn. 55060
 Phone (507) 451-8640

Exclusive dealerships available
 in some areas.



Skil Corporation, 5033 Elston Ave., Chicago, Ill. 60630
Skilsaw, chain saw, gas powered
Saws, electric

Skyworker Div., Transair Co., Inc., P.O. Box 360, Delaware, Ohio

Skyworker, aerial bucket; 40, 45 and 50 ft., 90° total movement on lower boom; twin buckets on either side of boom

R & G Sloane Mfg. Co., Sun Valley, California
Pipe fittings, clear PVC construction, for irrigation and other water distribution systems

Slope Tractor, Inc., 106 W. 9th Ave., Harper, Kansas 67058
Slope Runner, tractor mower, rotary flail or sickle, adjustable angle hydraulic lever control adjusts wheels and tractor chasis to remain in level attitude on a slope

Smithco, Inc., 11 West Ave., Wayne, Pa. 19087
Red Rider, tractor 8 and 10 hp
Little Beaver Spiker, turf equipment (Spiker)
Top Rider Top Dresser, turf equipment (top dresser)
Easy Rider Trap Rake, turf equipment (trap rake)
Lark Sprayers, sprayers
Hawk Sprayers, sprayers

Solo Motors, Inc., P.O. Box 5030, 5100 Chestnut Ave., Newport News, Virginia 23605

Sprayer, Model 425 hand operated
Mistblower, Model 410 3hp, Model 423 5 hp
Tractor Sprayer, 10 hp, Model 424 self-propelled; 18 hp, Model 450 self-propelled; Model 451 PTO mounted; Model 452 PTO mounted; 10 hp, Model 419 super custom mounted
Newport, blower Model 430 5 hp, mini Model 410 3 hp

Chain Saw, Model 610 3 SAE hp, Model 620 4 SAE hp, Model 650 6 SAE hp, Model 635 8 SAE hp, Model 660 7 SAE hp

Mower, sickle bar, 6.5 SAE hp, Model 520
Water Pump, 6.5 SAE hp, Model 801
Garden Tractor, Model 527 tiller 6.5 hp
Post Hole Digger, Model 812, 6.5 hp
Snow Blower, Model 813, 6.5 hp
Generator, Model 819, 110 volt
Engine, Model 272, 6.5 hp

Southern Mill Creek Products Co., Inc., P.O. Box 1096, Tampa, Florida 33601

SMCP Dursban Granules, insecticide
SMCP Mole Cricket Bait, insecticide
SMCP Dursban 2E, insecticide
SMCP Malathion, insecticide
Mallinekrodt Products, fungicides
DuPont Weed Killers, herbicides (bareground)
Foam Spray, insecticide carrier
Geigy, Diazinon, insecticide
Geigy, Sarolex, insecticide
Geigy, Pramitol, herbicide (bareground)
Tandex, herbicide (bareground)
Balan & Treflan, herbicide (preemergence)
DuPont Fungicides,
3M Aquatic Herbicides, herbicide (aquatic)
John Bean, sprayers

Speedex Tractor Co., 367 N. Freedom St., Ravenna, Ohio 44266

Speedex, tractor, 8 hp, 10 hp, 14 hp
Mower, rotary, 36 inch, 44 inch and 50 inch

Spraying Systems Co., North Ave. at Schmale Rd., Wheaton, Illinois 60187

GunJet®, spray guns

save trees



MAUGET TREE INJECTION PROCESS

Avoids Drilling Damage

APPROVED Trunk Injection Method for Utilizing Benlate® Fungicide In Combating Dutch Elm Disease Under EPA Reg. No. 352-354.

INJECT-A-MIN® Nutrients for Correction of Elemental Deficiencies In Problem Trees.

INJECT-A-CIDE® for Control of Many Insect Pests In Ornamental Trees.

Distributors are as follows:

Arizona Tree Injection Products, 744 East Dunlap, Phoenix, Arizona 85020
Guardian Tree Experts, 12401 Parklawn Dr., Rockville, Maryland 20852
Forrest Lytle and Sons, 740 West Galbraith Rd., Cincinnati, Ohio 45231
Permalawn Inc. 2222 Green Bay Road, Evanston, Illinois 60201
(Orders or service will no longer be available thru C.L.M. National Co.)

Contact Your Area Distributor or

J. J. MAUGET CO.

P.O. Box 3422 Burbank, California 91504

NEW ALGICIDE

INTRODUCING

Mariner^{T.M.}
BRAND
AQUATIC HERBICIDE

SYSTEM

M

from the new and growing line of
aquatic weed and algae control products
available now from

3M
COMPANY

for more information, call or write:

**ENVIRONMENTAL PRODUCTS
3M COMPANY**

3M Center, Bldg. 209-BC
St. Paul, Minnesota 55101
612/733-5012

EPA Reg. No. 10350-1

TeeJet®, spray nozzles
 FloodJet®, spray nozzles
 VeeJet®, spray nozzles
 FoamJet®, spray nozzles

Sprinkler Irrigation Supply Co., Div. of A. J. Miller, Inc.,
 Campbell Rd., Royal Oak, Michigan 48067

Pipe, irrigation
 Irrigation systems, complete
 Sprinklers

Standard Manufacturing Co., 220 E. Fourth St., Cedar Falls,
 Iowa 50613

Porta-Span bridge

Stanford Seed Co., P.O. Box 230, Plymouth Meeting, Penn-
 sylvania 19462

Crownvetch, seed, crowns or plants

Stauffer Chemical Co., Westport, Conn. 06880

Aspon®, insecticide
 Betasan®, herbicide
 Eptam®, herbicide
 Imidan®, insecticide
 Trithion®, insecticide
 Vapam®, soil fumigant

Stihl American, Inc., 194 Greenwood Ave., Midland Park,
 New Jersey 07432

Chain Saws, electric and gasoline powered, saw, chain,
 powered
 Stihl SG-17, blower/sprayer, back-pack gasoline powered
 Stihl Cutquik, saw, circular cut-off for cement, stone,
 steel, pipes, etc.
 Stihl Post Hole Digger, earth auger and planting tool,
 gasoline powered
 Stihl Brush-Cutter, brush and weed cutter, gasoline
 powered
 Stihl Hedge-Trimner, hedge trimmer, gasoline powered,
 trim hedges and small brush/trees

Stull Chemical Company, 3400 Nacogdoches Rd., San An-
 tonio, Texas 78217

Bivert®, invert emulsion adjuvant
 Bivert Spray System, spray equipment for using invert
 emulsions—kits and complete units

Sudbury Laboratory, Inc., 572 Dutton Rd., Sudbury, Mass.
 01776

Sudbury Soil Test Kits, soil testing equipment for
 pH, NPK
 Sudbury tailor-made fertilizers, water soluble fertilizers,
 unit X, 44% N; unit Y, 44% P; unit Z, 44% K

Sun-Mastr Corporation, 603 S. Kansas Ave., Olathe, Kansas
 66061

Safty-Shear Flail Mowers, 74" and 90" flail mowers
 Leader Rotary Cutters, 5' and 6' rotary cutters
 Mid-Mount Mowers, 27 mid-mount mower models for
 old and new tractors
 Gang Reel Mowers, 3 and 5 gang reel mowers

Suzuki of San Diego, San Diego, Calif.

Tire Carrier, for Suzuki 4-wheel drive vehicle, swing-away
 tire carrier

T

Tallman Equipment Co., Inc., 3825 W. 31st St., Chicago,
 Illinois 60623

Shears

TCI, Inc., Hy. 12 East, Benson, Minn. 56215

Herculift, 4 W.D. forklift
 F4, fertilizer spreader

Techumseh Products Co., 900 North St., Grafton, Wis. 53024
 Engines, 2 to 16 hp, vertical and horizontal shaft

Professional Education in Arboriculture

Over 800 pages of text, illustrations, and tests have
 been developed for your education in Shade Tree
 Maintenance practices. Written by Drs. J. James
 Kielbaso and Melvin R. Koelling of the Department of
 Forestry at Michigan State University, the National
 Arborist Association **Home Study Program** is now
 available to all persons interested in the professional
 practice of arboriculture.

For more information on the Professional Home Study
 Program in Arboriculture, write to the:

**National Arborist Association
 Home Study Program
 1750 Old Meadow Road
 McLean, Va. 22101**

For More Details Circle (143) on Reply Card



**safely lifts
 riding mowers
 up to 80" for
 quick and easy
 servicing**

**motorized
 all-position
 stand
 for walking
 mowers
 also available**

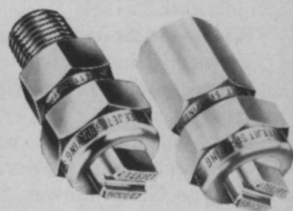
Dependable hydraulic power safely
 lifts 1000 lb. loads to any working
 height up to 80"—in less than 30
 seconds. Operator faces lifting
 action—reaches all controls with-
 out moving. Runways are 72" long
 and are adjustable in width from
 17" to 46". No permanent installa-
 tion required. Write today.
**G & H Products, Inc., Dept. WT
 St. Paris, Ohio 43072**

For More Details Circle (122) on Reply Card

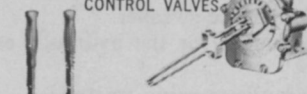
SPRAYING SYSTEMS CO.

TeeJet®

**SPRAY NOZZLES
 AND ACCESSORIES**



SPRAY BOOM
 CONTROL VALVES



LINE and
 SUCTION STRAINERS



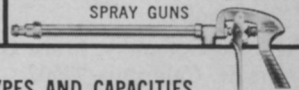
PRESSURE
 RELIEF VALVES



Vari-Spacing, Split-
 Eyelet and Hose
 Shank BODIES and
 NOZZLES



SPRAY GUNS



Over 800

INTERCHANGEABLE SPRAY TIP TYPES AND CAPACITIES...

tapered edge, even and wide angle flat spray . . .
 hollow and full cone . . . disc type hollow and full
 cone . . . and flow regulators. The most complete
 line for spraying herbicides, insecticides, fungi-
 cides and liquid fertilizers. All materials . . . brass,
 aluminum, stainless steel and Nylon.
 Dependable delivery. For complete in-
 formation on spray nozzles, spray guns
 and accessories write for Catalog 35.

SPRAYING SYSTEMS CO.

North Ave. at Schmale Rd. • Wheaton, Illinois 60187



**ADVANCED RESEARCH, ENGINEERING, PRODUCTION
 FOR BETTER SPRAY NOZZLE DESIGN AND PERFORMANCE**

For More Details Circle (124) on Reply Card

Trans axles, Transmissions, Differentials, Hydrostatic units

Teledyne Wisconsin Motor, 1910 South 53rd St., Milwaukee, Wisconsin 53246

Engines, air-cooled, gasoline

Tenneco Oil Co., P.O. Box 18, Houston, Texas

Tenneco 400, 500, diluent (solvent)

Tenneco Benzene, diluent (solvent)

Tenneco Para Xylene, diluent (solvent)

Terrain King Corporation, P.O. Box 7616, 4444 Center, Houston, Texas 77007

Terrain King, mower, rotary, 5-25 ft.

Slopemower, mower, flail, 72 inches to 190 inches

Railbird, specialized mowers, boom type, guardrail and fence mower

Thomas Equipment, Ltd., Centreville, New Brunswick, Canada

Mower, sickle, attachment to front end loader

Thompson-Hayward Chemical Co., 4200 Sprecker Rd., Kansas City, Kansas 66110

Casoraon[®], dichlobenil, herbicide, selective preemergent

Du-Ter[®], triphenyltin hydroxide, fungicide

De-Fend[®], dimethoate, insecticide, systemic

Biotrol, BTB, biological insecticide

Deo-Weed, herbicide, phenoxy, postemergence

Uni-Mix, surfactant/compatibility agent

Tilton Equipment Co., 855 3rd St. S.W., New Brighton, Minnesota 55112

Jonsered Chain Saws, four models, 11 1/2-20 lbs. weight, 12-60 inch bar length, automatic and dual system chain oiler

The Toro Company, 8111 Lyndale Ave. South, Bloomington, Minn. 55420

Hevi-Duty, mower, rotary (hand or self-propelled) 21 inch and 25 inch

Whirlwind, mower, rotary, 31 inch

Trojan, 60 inch cut

Professional, mower, triplex reel, 70 inch, 76 inch and 84 inch cut

Greenmaster, mower, walk greensmower, 21 inch

Greensmaster 3, mower, triplex greensmower, riding

Spartan Gang, mower, 5, 7 or 9 bladed-formal and semi-formal turf

Landscaper 4, multi-purpose landscaping tool for seedbed preparation, seeding, fertilizing, also Model 6 Pro.

Rake-O-Vac, turf and hard surface sweeper

EVCO Hydromulcher, equipment for the hydraulic establishment of vegetation

Parkmaster, 5-7-9 unit hydraulic mowing tractor

Roughmaster, 4 and 5 bladed rough area reel mowers

Toro Frames, reel mower transport and lift frames

Toro Turf Tractor, utility turf tractor

Sandpro, sand trap maintenance and grooming unit, all hydraulic

The Toro Company, Moist O'Matic Division, P.O. Box 489, Riverside, California 92502

Automatic Controller, irrigation equipment, hydraulic or electric; 4, 8, 11, 23 station control satellite

Automatic Remote Control Valves, 3/4 inch to 2 inch, hydraulic or electric

Pop Up Spray Sprinklers, 8-54 ft. diameter stream spray

Pop Up Rotary Sprinklers, 65-235 ft. diameter, valve and hand, hydraulic or electric, 2 speed, gear driven

Shrub and Bubbler Sprinklers, adjustable, stream, flood

Boring Machine, 10 ft. and 16 ft. models

Trenching Machines, residential, light commercial, converts to boring machine, 1-3 inches wide, 7 inches deep

Quick Coupling Valves, standard, vinyl or with lock

cover, valve range 3/4 inch to 1 1/2 inches

Impact Sprinklers, 1/2 inch to 1 1/4 inches threaded connection, part or full circle

Tradewinds, Inc., P.O. Box 1191, Tacoma, Washington 98401

Holder Tractors and Implements, tractors, 4-wheel drive, 2-wheel drive, diesel, 14 SAE horsepower to 40 SAE horsepower

Tree-Ject Company, P.O. Box 396, Waycross, Georgia 31501

Tree-Ject, tree injector

Reddi-Fire Drip Torch, drip or drag torch

Ezy-Spot Paints, tree marking paints

Tuco, Div. of The Upjohn Co., Kalamazoo, Michigan 49001

Acti-Dione TGF, cycloheximide, fungicide, turf and ornamental

Acti-Dione Thiram, cycloheximide and thiram, fungicide, turf

Acti-Dione RZ, cycloheximide and PCNB, fungicide, turf

Enide 50W, diphenamid, herbicide, dichondra, ornamentals

Botran 75W, DCNA, fungicide, fruit trees, ornamentals

Turf-Vac Corporation, 3342 Olive Ave., P.O. Box 7382, Long Beach, California 90807

Turf Sweeper, 4 1/2-10 ft. width, self-propelled and tractor drawn, turf and paved surfaces

Twin City Seed, 500 30th Ave. N.E., Minneapolis, Minnesota 55418

Park, Kentuck Bluegrass seed

U

Union Carbide Corp., Agricultural Products, P.O. Box 1906, Salinas, California 93901

Sevin[®] carbaryl, insecticide; liquid, dust, wettable powder

Uniroyal Chemical, Div. of Uniroyal, Inc., Bethany, Conn. 06770

Maintain[®] 125, herbicide

MH-30[®] maleic hydrazide, growth regulant

Royal MH-30[®], growth regulant

Omite[®], insecticide; wettable powder, dust, liquid

Slo-Gro[®], growth regulant

Timek[®] 106 aldicarb, insecticide

Up-Right Scaffolds, 1013 Pardee St., Berkeley, Calif. 94710

Scaffolds, portable aluminum for tree trimming

Universal Division of Leigh Products, Inc., Coopersville, Michigan 49404

Sprayer, tank

Sprayers, open top tank

Slide Sprayer

Flame Sprayers

Hose-end Sprayers

Power Sprayer

Continuous and intermittend hand sprayers

Hand Dusters

Thermal Fogger, mineral base

Universal Motor Division, Medalist Industries, 1552 Harrison St., Oshkosh, Wisconsin 54901

Aquamaster[®] Centrifugal pumps, pumps for liquid fertilizer and water transfer

U.S. Borax & Chemical Corporation, 3075 Wilshire Blvd., Los Angeles, California 90010

Maintain[®] CF 125, growth retardant

Maintain[®] A, growth regulator, tree wound paint

Ureabor[®], nonselective herbicide

Ureabor[®] 8D, nonselective herbicide

Monobor-Chlorate[®] Granular, nonselective herbicide

Hibor[®] C, nonselective herbicide

Polybor-Chlorate[®], nonselective herbicide

Borocil® IV, nonselective herbicide
Borate Compounds, nonselective herbicide
Potassium Chloride, potash
Borax, trace elements
Solubor, trace elements

U.S. Gypsum, 101 South Wacker Dr., Chicago, Ill. 60606
Grand Prize®, natural clay soil conditioner

V

Valley Products Corporation, Valley, Nebr. 68064
Stump Cutter, removes stumps of any size to 8 inch below ground, compact, transports in car trunk

Vandermolen Corporation, 119 Dorsa Ave., Livingston, N.J. 07039

Diadem Brush Chipper, up to 2½" diam.
Diadem Fertilizer Spreader and Seeder, broadcast type, PTO, 3 pt. hitch
KWH Mistblower, back pack
KWH Blowers, back pack and wheeled models
KWH Bora Mistblower, skid mounted, Wankel powered, 65 ft. to 80 ft. reach
Electric Bug Killer, lures and kills insects from area up to 3 acres

Velsicol Chemical Corporation, 341 East Ohio Street, Chicago, Illinois 60611

Banvel (dicamba), herbicide, 4S and Banvel and 2,4-D Accutrol, spray system, air emulsion
Chlordane, insecticide, 25G, 72EC, 40%WP
Heptachlor, insecticide, 2.5% G, 5% G, 10% G

Vermeer Manufacturing Company, Box 200, Pella, Iowa 50219

Trencher
Vibratory Plow
Backhoe
Tree Spade (Mover), 13-18 hp
Stump Cutter
Log Splitter
Log Chipper

Viking Pump Co., 4th and Shutte Sts., Cedar Falls, Iowa
Pumps

Village Blacksmith, Vine and Second Sts., Boonville, Mo. 65233

Hand Tools, lawn and garden
Gas engine powered post hole digger
Cultivator, electric
Trimmers, electric, hedge
Magic Lantern®, electric insect controller
Blitz Fog® Fogger, lawn mower and garden tractor attachment

Blitz Fog®, insecticide
Blitz Fog®, propane foggers
Blitz Fog®, electric foggers
Portable Electric Cord Reels

Vistron Corporation, 1650 Midland Bldg., Cleveland, Ohio 44115

Urea, fertilizer
Anhydrous ammonia, fertilizer
Nitrogen solutions, fertilizer

Vogel Tool and Die Corp., Stone Park, Illinois
Post hole drill

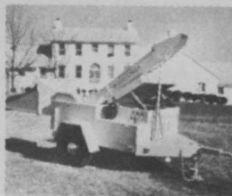
W-X-Y-Z

Waldon, Inc., 201 West Oklahoma Ave., Fairview, Okla. 73737

Tractor, hydraulic, 4-wheel drive, articulating and oscillating type frame plus utility air, may be used as a forklift or loader
Pickup Broom, attachment to Waldon 5000 tractor
Snow Blower, attachment, auxil. engine, 65 hp, chain

SAFETY TEST
HEAVY DUTY

WOOD/CHUCK®



Okay. But what puts Safety Test Wood/Chuck in a class by itself where chippers are concerned? Just superior performance, economy and safety.

First, there's less down-time for blade adjustment and replacement. The Wood/Chuck's

blades lock into the rugged rotor and automatically position properly. This takes just minutes for a Wood/Chuck but often requires hours with other chippers. Wood/Chuck's blades are "V"-grooved for full length support that means extra safety. And where most "chippers'" blades are so positioned that chips are actually crushed away . . . the Wood/Chuck's shallow blade angle slices chips away. Goodbye friction, wasted energy and vibration; jobs go faster, fuel goes farther.

Only the Wood/Chuck has really been built from the ground up as a chipper for heavy-duty use. It's modern, functional, no-nonsense design sets it apart. Above all, the Safety Test Wood/Chuck has that built-in Safety Test "Extra Measure" of dependability. You can rely on it to do a full day's work . . . day after day, year after year. Frankly, there are dozens of reasons why no other chipper compares with the Wood/Chuck. You owe it to yourself to get the full story from your Wood/Chuck representative or write Safety Test & Equipment Co., Inc., P.O. Drawer 400, Shelby, N. C. 28150. Tel. (704) 482-7346

For More Details Circle (151) on Reply Card

ALGAE CONTROL

in ponds, lakes, lagoons, reservoirs,
irrigation canals and water holes on
farms, golf courses, nurseries and parks.

MILWAUKEE, WIS. Scientists at Great Lakes Biochemical Co., Inc. have recently received registration from the EPA for ALGIMYCIN PLL-C.

A new formulation, ALGIMYCIN PLL-C remains soluble over a wide pH range and is most effective when applied directly to the algae mats, either by spray on the surface or injected on the bottom of the body of water.

ALGIMYCIN PLL-C is not toxic to most common fresh water and tropical fish, desirable aquatic plants, animals, birds or pets, when used as directed. However, it is such

an efficient algicide that bodies of water with heavy algae infestations should be treated in sections so as to prevent oxygen depletion caused by large quantities of dead and decaying algae.

Economical and easy-to-use, ALGIMYCIN PLL-C makes green, slimy ponds clear and sparkling again.

Write Dr. "Bob" for more information on how to clear up ugly slimy waters.



**Great Lakes
Biochemical** CO. INC.

6120 West Douglas Avenue
Milwaukee, Wisconsin 53218

- drive
Forklift, boom type, attachment to Waldon 5000 tractor
Scrap Grab, attachment, lift capacity 1300 to 1900 lbs.
Backhoe, attachment to Waldon 5000 tractor
- Walsh Manufacturing Co., 1200 Fisher St., Charles City, Iowa 50616
Walsh Sprayers
Index-O-Matic, hi-pressure sprayers
Spray Booms
Spray Guns
Spray Nozzles
- Warren's Turf Nursery, Inc., 8400 West 111th St., Palos Park, Illinois 60464
Sod, Warren's A-20 Bluegrass
Sod, Warren's A-34 Bluegrass
- Water-In, Inc., P.O. Box 421, Altadena, California 91001
Water-In, wetting agent, soil conditioner, liquid or dry form
- Waymark, 44 River St., Cortland, N.Y. 13045
Spreaders, disc type
Sprayers, boom
Sprayers, complete power unit
- Wayne Engineering Corporation, Cedar Falls, Iowa
Sprayer/refuse truck, complete unit, high-pressure pump, 40 ft. hose, 100 gallon storage tank, equipment storage compartment
- Wayne Manufacturing Co., 1201 E. Lexington St., Pomona, California 91766
Stump King, stump remover, dual cutting wheels
Wayne Brush Chipper, brush chipper, 6-sided disposable bed knife, hydraulic safety brake
Broom, disc type, polypropylene construction
- Weather-matic Division, Telsco Industries, P.O. Box 18205, Dallas, Texas 75218
Control, electric, irrigation
Valve, solenoid
Rotary head
Spray head
Nozzles
Accessories
- H. N. Webster, Mfg., P.O. Box 623, Sebring, Florida 33870
Webstermatic, irrigation, quick coupling riser valves
- WD-40 Company, 5390 Napa Street, San Diego, California 93128
WD-40, lubricant, stops squeaks, loosens rusted parts, protects metal, displaces moisture
- Weldex Corporation, Grafton, Mass.
Crane, for pickup trucks, lifts up to 2500 lbs., full circle swing, 25 ft. cable
- Welsh Mfg. Co., 9 Magnolia St., Providence, R.I. 02909
Pesticide Respirators, safety equipment
Ammonia respirators
Dust Respirators
Goggles
Safety Caps
- West Chemical Products, Inc., 42-16 West St., New York, N.Y. 11101
Assault, herbicide, non-selective, bareground
- Western Products, Div. Douglas Dynamics Corp., 1234 North 62nd St., Milwaukee, Wisc. 53213
Roll-Action™ Blade, snow plowing
- Weyerhaeuser Company, Tacoma, Wash. 98401
Silva Fiber, mulch for hydro-seeding
PFM, mulch for hydro-seeding
- Wheel Horse Products, Inc., 515 W. Ireland Rd., South Bend, Indiana 46614
Tractor, lawn and garden; 10, 12, 14, 16, 18 hp automatic; GT14 automatic; 8, 10, 12, 14 hp eight speed; 8 hp four speed; Ranger 700 and 800; Rider R-26
Rotary Mower, 26, 36, 42, 48 inch side discharge, 60 inch rear mount (PTO)
Grader Blade, 40 inch
Tiller, 36 inch and 38 inch
Sickle, 42 inch and 50 inch
Disc, 32 inch
Harrow
Cultivator
Utility Wagon
Dump Trailer
Lawn Roller, 32 inch
Aerator, 36 inch
Lawn Sweeper, 31 inch and 38 inch
Dozer Blade, 39, 42, 54 inch
- Williamstown Irrigation, Inc., Williamstown, N.Y. 13493
Irrigation riser valves
Irrigation sprinkler heads
Irrigation systems, complete
- Willmar Manufacturing Co., Wilmar, Minn.
Spreader, pull-type, floatation tires, spreads up to 1½ tons per load
- Willson Products Div., Ray-O-Vac Co., 2nd and Washington Aves., Reading, Pa.
Masks, gas
Masks, dust
Respirators
Safety equipment
Helmets
- Witco Chemical Corporation, Organics Division, 277 Park Ave., New York, N.Y. 10017
Emcol 14, spreader sticker
Emcol H-53, H-54, H-55, spray oil emulsifiers
Emcol H-A, H-2A, H-B, H-C, HJP-1, emulsifiers for liquid fertilization
- Winru Chemical & Sales Co., 923 State Line, Kansas City, Missouri 64101
Baygon, insecticide
Synergized Pyrethrins, insecticides
Chlordane, insecticide
Malathion, insecticide
Diazinon, insecticide
Zectran, insecticide
Infuco Compression Sprayers, environmental protection chemical sprayer
Gas Masks, Mine safety, safety equipment
Phostoxin, fumigant
Infuco Motorized pumps, electric or gas pump units
- Winterlawn Chemical Corp., a subsidiary of Virginia Chemicals, Inc., 3340 West Norfolk Rd., Portsmouth, Virginia 23703
Winterlawn® Grass Color Concentrate, permanent pigmented, water-soluble emulsion color system for dormant vegetation; also in aerosol containers
- Wood Brothers, Inc. Oregon, Illinois
Mower, 3-point hitch, rotary, PTO driven, adjustable
- Wright Saw Div., Thomas Industries, 207 E. Broadway, Louisville, Ky.
Saws, chain
Saws, manual
Saws, power
- Yardman, The Leisure Group, Inc., Jackson, Mich.
Mowers