

Di-Syston[®], insecticide
Meta-Systox[®]-R, insecticide
Entex[®], insecticide

Chevron Chemical Co., 200 Bush St., San Francisco, Calif. 94120

Monitor 4 dimethyl phosphoramidothioate, insecticide
Dibrom 8 EC naled, insecticide
Diquat diquat dibromide, herbicide, aquatic
Paraquat CL paraquat dichloride, herbicide, contact
Difolatan 4 flowable (difolatan), fungicide, broad spectrum
Isotox, insecticide
Orthocide (captan products), fungicide, broad spectrum
Volik Supreme (oil), insecticide, miticide

Ciba-Geigy Corporation, Agricultural Division, Saw Mill River Road, Ardsley, N.Y. 10502

AAtrex[®] 80W, atrazine, herbicide, turf for sod and noncropland, pre- and postemergence
Atratul[®] 80W, atrazine, herbicide, nonselective, bareground
Atratul[®] 8P, atrazine and sodium chlorate and sodium metaborate, herbicide, nonselective, bareground
Princep[®] 80W, simazine, herbicide, selective and non-selective depending on rates
Princep[®] 4G, simazine, herbicide, granular
Pramitol[®] 25E, prometone, herbicide, bareground, liquid emulsion
Pramitol[®] 5PS, prometone and simazine, herbicide, bareground, pelleted
Sarolex[®], Diazinon, nematicide, insecticide
Diazinon[®] 80W, diazinon, insecticide, also available in dust, emulsifiable concentrate, granular, oil solution, emulsifiable solution formulations

Clark Equipment Co., Buchanan Plant, Buchanan, Michigan 49107

Forklifts

W. A. Cleary Corp., P.O. Box 749, New Brunswick, New Jersey 08903

Cleary's 3336[™] Systemic Turf Fungicide
Bromosan[™] Systemic Turf Fungicide
PMAS 10%, fungicide and herbicide
Caddy, fungicide
Spotrete, fungicide
Cad-Trete, fungicide
MCPD and 2,4-D, herbicide
Super methar, herbicide
Tru-Green, liquid chelating agent
Greenzit (turf and tree), natural colorant

Colloidal Products Corporation, P.O. Box 621, Petaluma, Calif. 94952

Bio-Film[®], spreader, sticker
Buffer-X[®], spreader, activator, buffer
Compex[®], compatibility agent for liquid fertilizers
Fomex[®], foaming spray adjuvant and spreaderactivator for herbicide sprays
Multi-Film L, water dispersible spreader-activator
Multi-Film X-77, non-ionic spreader-activator
Nu-Trex, spreader-nutrient-buffer
Regulaid, spreader-activator for growth regulator sprays
Solvoid, spreader-stabilizer for oil sprays
Tronic, spreader-activator

Contree Sales, Inc., P.O. Box 129, Columbus, Wis. 53925

Rice Paddy Daddy, sprayer
Boom Dye-Marker, marks areas treated
Wat Sol Oil, lubrication, preservation, storage oil
Auger, Model S.S., 4 inch, 12 volt for materials handling

Cuts twice as fast as most lawn tractors, hugs the ground for hillside safety



NATIONAL 68-inch Triplex

Mows a 68-inch swath at speeds up to 4 miles per hour, a half acre in 15 minutes.

It's a turf-professional type mower, with three powered, free-floating reels that follow ground contour. It shears grass cleanly; doesn't leave unsightly "tip burn" as rotaries often do.

Reduces trimming time because the reels reach out over curbs, up to obstructions and in other hard-to-cut places.

Built to last—with Timken bearings, automotive-type transmission and a lip on the cutter bar to take years of wear.

Do your lawn job in about half the time and do it better with the all-mower mower, the National Triplex.

Other models from 25 to 84-inch cut.

Write for information.



NATIONAL MOWER COMPANY

660 Raymond Avenue, St. Paul, Minnesota 55114
Phone: 612/646-4079

Nitrojector, for injecting chemicals and fertilizer into irrigation systems
Multi-knife, soil injection for application

Conwed Corporation, 2200 Highcrest Road, St. Paul, Minnesota 55113

Hydro Mulch Fibers, turf establishment
Turf Establishment Blanket, turf establishment
Erosion Control Netting, erosion control
Turf Protection Blanket, turf protection

Creative Sales, Inc., 200 South Main, Fremont, Nebraska 68025

Medicaps® tree systems, systemic trunk implants (trees)

Curtis Dyna-Products, P.O. Box 297, Westfield, Indiana 46074

Back Pack BP-145, dispensing equipment
Dyna-Fog, dispensing equipment

Cushman Outboard Marine Corporation, P.O. Box 82409, Lincoln, Nebraska 68501

Turf-Truckster, turf vehicles, top dresser, spiker, sprayer, cyclone spreader, personnel and light burden hauling

D

Ross Daniels, Inc., 1720 Fuller Road, West Des Moines, Iowa 50265

Root Feeders, 3 per kit; ganged together with two 6 ft. lengths of hose and fittings. Kit includes 240 high nitrogen cartridges

Davey Tree Expert Co., Kent, Ohio 44240

Tree nursery, 150 varieties of shade and ornamentals
Tree service, nationwide and Canada representation

Dedoes Industries, Berkley, Michigan

Aerator

Deere & Co., John Deere Equipment, John Deere Administrative Center, John Deere Rd., Moline, Ill. 61265

Tractors, a model and horsepower rating in every class from smallest yard to industrial uses
Mowers, push, riding, self-propelled, tractor
Skid-Steer loader, two models, 70 and 170, 25 and 37 hp
Grounds maintenance tractor, Model 820, 31 hp, belly mounted mower, cuts 6 ft. swath
Tools, 237 different tools for shop, work and home
Roto tillers
Lawn sweepers
Blades
Trailers
Snow throwers
Chain saws

Delavan Manufacturing Co., 88 4th St., West Des Moines, Iowa 50265

Nozzles, fan, flood, disk, whirl

DESA Industries, Inc., 25000 S. Western Ave., Park Forest, Illinois 60466

Remington Chain Saws, gasoline, electric and pneumatic driven

Diamond Shamrock Chemical Co., 300 Union Commerce Bldg., Cleveland, Ohio 44115

Dacamine® herbicide
Dacthal® herbicide
DSMA herbicide
Daconate® herbicide
2,4-D herbicide
2,4,5-T herbicide
Silvex® 2,4-D, herbicide
2,4-D granules, herbicide
Aqua 2,4-D granules, herbicide
Daconil 2787®, fungicide
Dacagin® spray additive, drift retardant

Dico Co., Inc., Material Handling Division, P.O. Box 429, York, Pa. 17405

Unloaders, hydraulic boom type

J. J. Dill Co., P.O. Box 788, Kalamazoo, Mich. 49005

D-Lete, herbicide, bareground, liquid and granular
Kleen Turf, herbicide, selective, broad-leaved plants

The C. B. Dolge Company, 11 Ferry Lane, West, Westport, Connecticut 06880

Tote-Weed Killer, herbicide, bareground
Penetrate, soil conditioner
Lake Dye, non toxic dye for water
Selexta, insecticide, turf
EWT Plus, herbicide, elective MCPP plus 240
Boost, solvent detergent cleaner
Lapping Soap, soap for use in lapping compound

Dow Chemical USA, P.O. Box 1706, Midland, Michigan 48640

Formula 40, herbicide
DMA-40, herbicide
Dowpon®, herbicide, non-selective
Dowfume® MC-2, fumigant
Dursban® 2E, insecticide
Fumazone® 86, fumigant
Zectran® 2E, insecticide
Dow General Weed Killer, herbicide
Esteron®, herbicide
Kuron®, herbicide
Premerge®, herbicide

DriAll, Inc., Box 309, Attica, Indiana 47918

Levler, soil leveler
Scarifer, landscape leveler
Air Curtain Destructor, brush and tree burner

E. I. Du Pont de Nemours & Co., Inc., 1007 Market St., Wilmington, Del. 19898

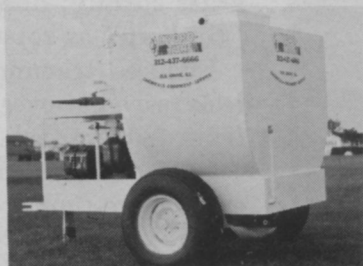
Hyvar® X bromacil weed killer, Hyvar® X-L, (liquid) bareground
Krovar® I, weed killer, bareground
Karmex® diuron weed killer, bareground, preemergence
Ammate® X weed and brush killer, contact
Tersan® LSR, turf fungicide
Tersan® 1991, turf fungicide
Tersan® SP, turf fungicide

E

Economy Tractor, 1005 Anoka Ave., Waukesha, Wis. 53186

Tractor, all gear drive
Mower, rotary, mounted under tractor, 60 inches

Why Own A HYDRO-TURF SPRAYER



VERSATILITY

- Grows Grass 5 Days. Full Turf 25 Days
- Seed, Fertilize Up To 5 Acres in 30 Minutes
- Hydro-Mulch & Sprigs
- Spray Trees, Turf, Insects
- Portable Irrigation and Pumping System
- Precisely apply Dry Mat. Models from 150 Gal.-3000 Gal.

P. O. BOX 3 — ELK GROVE, ILL. 60007
(312) 437-6666-7

Edwards Manufacturing Co., Edwards Ranch, Route 4, Ponca City, Oklahoma 74601

Sprayer, power driven, self-contained, operate with boom or spray gun
Tank, 400 gallon, nurse tank for serial applicators

Elanco Products Company, P.O. Box 1750, Indianapolis, Indiana 46206

Gree Power®, fertilizer, slow release
Crabicide®, herbicide, preemergent
Tri-Cide®, insecticide, systemic
Balan® benefin, herbicide, preemergent
Treflan® trifluralin, herbicide, preemergent
Dymid® diphenamid, herbicide, preemergent, liquid and granular
Parnon®, fungicide
Pipron®, fungicide, liquid concentrate

Erickson Corporation, 211 St. Anthony Blvd., N.E., Minneapolis, Minn. 55418

Erickson, hydrostatic drive compact front end loader

Eversman Mfg. Company, Curtis at Fifth St., Denver, Colorado 80204

Eversman, land leveler

Excel Industries, Inc., Box 385, Hesston, Kansas 67602

Mowers, flail, rotary

E-Z Rake, Inc., 1001 S. Ransdell Rd., P.O. Box 506, Lebanon, Indiana 46052

Thatcher, spring tine dethatching machine, walk behind and tractor mounted
Power Vacuum Sweeper, attaches to tractor or riding mower, equipped with center mount, rotary mower

F

Faesy & Besthoff, Inc., 143 River Road, Edgewater, N. J. 07020

F & B Lawn & Turf Fungicide, granular, combo of Dyrene and maneb
F & B Aspon Chlordane, insecticide, broad spectrum granular and sprayable
F & B Eptam 2.3, herbicide, granular, preemergent
F & B Sevin carbaryl, insecticide, granular, flowable, dust and wettable powder for mulations

Fairmont Hydraulics, 415 North Main Street, Fairmont, Minnesota 56031

The Powerfuls drills, pruners, saws; all hydraulically powered saws available in chain and circular

Fanno Saw Works, P.O. Box 628, Chico, Calif. 95926

Pruning saws, saws, manual

Farris Chemical Company, 7213 Kingston Pike, P.O. Box 10126, Knoxville, Tennessee 37919

Chemical Feed Pumps

Ferguson Fumigants, Inc., 93 Ford Lane, Hazelwood, Missouri 63042

Zytox Gelled Soil Fumigant, gelled methylbromide

Ferry-Morse Seed Co., P.O. Box 100, 111 Ferry-Morse Way, Mountain View, California 94040

Turf and Lawn Seeds

Ferti-Feeder, 3973 East Lay, Des Moines, Iowa 50306

Ferti-Feeder, tree fertilizer injector through augers
Ferti-Feed, fertilizer
Ferti-Sulfur, fertilizer
Ferti-Iron, fertilizer
Ferti-Feeder Auger

Fimco, Inc., 101 So. Court, Sioux City, Iowa 51101

Dobbins, power sprayers 10 to 110 gal. tank size with centrifugal or piston pumps, gas engines

Finn Equipment Company, 2525 Duck Creek Rd., Cincinnati, Ohio 45028

Titan Hydroseeder, hydraulic

Super Hydroseeder, seeding equipment

Bantam Hydroseeder, seeding equipment

Mulch Spreader, equipment for mechanical spreading of vegetative mulch

Bantam Mulch Spreader, equipment for mechanical spreading of vegetative mulch

Floridin Company, 3 Penn Center, Pittsburgh, Pa. 15235

Florex attapulgit, granular clay carrier

Dilux attapulgit, powdered clay carrier

Min-U-Gel 200 attapulgit, suspending clay for fluid fertilizer

Flymo Division, Keltec, Inc., P.O. Box 939, Elkhart, Ind. 46514

Flymo®, air-cushion rotary mower

Ford Tractor Operations, North America, 2500 E. Maple, Troy, Michigan 48084

Low center of gravity tractors, 34-57 hp

All purpose tractors, 34-131 hp

Industrial tractors, 41-70 hp

Lawn and garden tractors, 5-14 hp

Flail mowers, 5, 6, 7 ft. cut

Rotary cutters, 60 inches to 100 inches

Sicklebar mowers, 5, 6, 7 ft. cut

Fertilizer spreaders

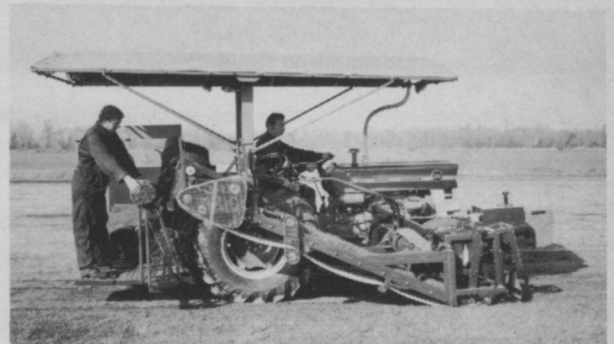
Chain saws

Loaders, 17 cu. ft. to 1 1/8 cu. yd., 1800-5400 lb. lift

Backhoes, 10-17 ft. digging depth

Blades, 8 models, 6-9 ft.

ELIMINATE HIGH LABOR AND REPAIR COST WITH A BROUWER SOD HARVESTER



Cut, roll and load on pallets up to 1300 sq. yds. of sod per hour in all types of soil, wet or dry.

Will cut 16", 18", 24" sod.

Can be mounted on a Massey-Ferguson or Ford tractor.

Attachments available, conveyor, slabbing, 4' x 5' pallet space.

All standard parts used.

Order now for spring delivery

BROUWER TURF EQUIPMENT, LTD.

RR #1, KESWICK, ONT., CANADA

TEL.: (416) 476-2442

Fox Valley Marking Systems, 4N671 Route 59, Bartlett, Illinois 60103

Easy marker handle
Easy striper machine
Stencil Kit
Traffic Paint
Marking paint

Friend Manufacturing Corporation, 441 Prospect St., Gasport, New York 14067

Friend Airmaster, air blast applicator
Friend Orchardkraft, alternators, power brushcutter
Friend Commander, chemical applicators, granular, chemical
Champion and Chapin, chemical applicators, dusters
Friend Orchardkraft, generators, hose, hydraulic and air powered tools
Friend Parkkraft, litter receptacles
Willson, dust masks
Friend, mistblowers, nozzle parts
Uniroyal, protective clothing
Friend Orchardkraft, pruners
Friend, pumps
Hannay, reels, hose
Willson, respirators, safety equipment
New Draulics, saws, chain
Seymour Smith, saws, manual
Friend Orchardkraft, power saws, shears
Friend, spray booms, spray guns, spray nozzles, complete, disk whirls
Friend, spray pumps, sprayer, bifluid, boom
Friend Orchardkraft, sprayers, cart or wheelbarrow type, hand, knapsack
Friend, spray tanks, sprayers, hose end, complete power unit sprayers

Fuerst Brothers, Inc., P.O. Box 271, Rhinebeck, N.Y. 12572
Flexible tine harrows

G

Gabriel Chemicals Ltd., 60 E. 42nd St., New York, N.Y. 10017

Gabriel Malathion, insecticide, liquid and WP
Gabriel Pyrethrum, insecticide, extracts and powders
Swingfog SN-10, insecticide fogger

Gandy Company, 528 Gandrud Road, Owatonna, Minnesota 55060

Turf Tender 24 & 42, stainless steel spreader and seeder
600 Series Spreader, 3-4-5-foot spreader and seeder
10 Series Spreader, 6-8-10-11-foot spreader and seeder
Line tender, soil sterilent applicator
Hort applicator, chemical applicator for tillage equipment
Gandy measuring wheel, land measuring wheel

Garber Seeders, Inc., St. Paris, Ohio
Seeders, hopper type

G & H Products, Inc., St. Paris, Ohio 43072

Uni-Lift, motorized all-position stand for riding mowers, lifts up to 80 inches, 1000 lb. loads, in less than 30 sec.

Gieringer Manufacturing Co., Inc., 6508 N. Sunny Point Road, Milwaukee, Wisconsin 53217

Sod-Gropper, sod roller

Glendale Optical Co., Inc., 130 Crossways Park Dr., Woodbury, L.I., N.Y. 11797

Hard hat, head protection gear, meets OSHA requirements

Goodall Division, 1405 Bunton Rd., Louisville, Kentucky 40213

Goodall, mower, rotary

PBI-Gordon Corporation, 300 South Third St., Kansas City, Kansas 66118

Trimec Fairway herbicide, herbicide, postemergence

Trimec Bentgrass herbicide, herbicide, postemergence
Perma-Kill Plus, herbicide

Granberg Industries, 201 Nevin Ave., Richmond, California 94801

Grind-R-Guide, freehand electric chain saw sharpener
File-N-Guide, chain saw sharpener
File-N-Joint, chain saw sharpener
Pokette, saw chain breaker
Break-N-Mend, saw chain breaker and rivet spinner
Clip-N-Trim, brush and hedge trimmer chain saw attachment
Alaskan Chain Saw Mill, lumber-making mill chain saw attachment

Grasslyn, Inc., 641 Pine Grove Rd., State College, Pa. 16801

Penngift crownvetch, erosion control plants
Grass seed

Gravely, One Gravely Lane, Clemmons, N.C. 27012

Gravely Convertibles, 2-wheel tractors, 7.6, 10 and 12 hp with attachments
Gravely lawn tractor, 8 hp with attachments
Gravely 810, 10 hp riding tractor
Gravely 812, 12 hp riding tractor
Gravely 814, 14 hp riding tractor
Gravely 816, 16 hp riding tractor
Gravely mowers, 40 and 50 inch rotary for riding tractors, 30 and 40 inch for walking tractors, flail mowers
Snow blowers, including other snow removal equipment

Great Lakes Biochemical Co., 6120 West Douglas Ave., Milwaukee, Wisconsin 53218

Algimycin PLL-C, herbicide, algae

Great Lakes Chemical Corporation, P.O. Box 2200, West Lafayette, Indiana 47906

Brom-O-Sol, fungicide
Brom-O-Gas, soil fumigant
Soilbrom 40, fumigant
Soilbrom 85, fumigant
Chlor-O-Pic, insecticide fumigant
Terr-O-Cide 15, fumigant
Terr-O-Cide 30, fumigant
Terr-O-Cide 30-D, fumigant
Terr-O-Gel 67, fumigant

Greenlife Products Company, Inc., P.O. Box 72, West Point, Virginia 23181

Pine bark soil conditioner, soil amendment
Pine bark mulch, for weed retarding, moisture holding, weather protection and soil improvement
Pine bark Deco nuggets, decorative bark
Cow manure, fertilizer 2-1-2
Top soil, soil improvement
Peat humus, soil improvement

The Gregg Co., 1714 Bannard St., P.O. Box 149, Riverton, New Jersey 08077

Nu-Type Green Lawn Spray, latex emulsion, grass colorant concentrate for dormant grass

Gulf Oil Company, Gulf Bldg., Pittsburgh, Pa.

Carbyne® barban, herbicide
Topcide®, herbicide

Grumman Aircraft Corp., S. Oyster Bay Rd., Bethpage, L.I., N.Y.

Aircraft, fixed wing

The Guildsman Company, Harrisburg, Pa.

Sprayer, pneumatic-hydraulic, self-contained

H

Hadfield Sod Roller Co., 6443 Sherwood, Oxford, Michigan 48051

Sod roller

Hahn, Inc., N. Garvin St., Evansville, Ind. 47717

Tournament Triplex, mower, reel, greens
Hahn Ransomes Versacut, mower, reel, power, fairways
Hahn Ransomes Mower, gang
Flexamatic, mower, reel, power, S-gang
Aeri-Boy, aerifier

W. L. Hamilton Co., Lenter St., Bangor, Michigan 49013

Spray guns
Pressure relief valves
Spray nozzles

Harder Arborist Supply Co., Box 111, Hempstead, N.Y. 11550

Safety equipment
Brush hooks

Harwil Corporation, Santa Monica, California

Switches, fluid flow type

Hays Mfg. Div., Zurn Industries, Inc., 12th and Plum, Erie, Pa. 16512

Select-O-Rain, irrigation and watering controller
Marfaid, automatic solenoid valves
Safe-T-Lawn, irrigation sprinklers
Module-Pac, mobile home water service line connection, complete unit

Hays Spray Gun Co., 98 N. San Gabriel Blvd., Pasadena, Calif.

Sprayers, hose end

Heath International, Inc., Richmond, Michigan

Elphant-Vac[®], vacuum

Hemco Corporation, P.O. Box 210, 111 N. Powell Rd., Independence, Missouri 64051

Sprayer tanks, tank, fiberglass
Travelite tool box, pickup truck tool box

Hercules Incorporated, 910 Market St., Wilmington, Delaware 19899

Nitroform[®], fertilizer, slow-release ureaform
Powder Blue[™], fertilizer, sprayable slow-release ureaform
Blue Chip[®], fertilizer, slow-release ureaform for dry application
Azak[®], herbicide, preemergence for crabgrass

Herd Seeder Company, Inc., 3600 East on U.S. 35 S.E., P.O. Box 448, Logansport, Indiana 46947

Sure-Feed broadcasters, broadcasters for seeds, fertilizer, granular chemicals, 6 models tractor mounted

Hesston Corporation, Industrial Division, Hesston, Kansas

Front Runner, tractor

Highway Equipment Co., 616 D Ave. N.W., Cedar Rapids, Iowa 52405

Hi-Way spreaders, self-powered, self-contained hopper type spreader body for pickup trucks

Hiller Aircraft Corp., 1350 Willow Rd., Palo Alto, Calif.
Aircraft, helicopter

Hoffco, Inc., 25 Washington Ave., Richmond, Ind. 47374

Brush cutter, engine driven
Post hole drill, 8 inch holes, 4 ft. deep
Drills, hand and power tool
Chain saws

Bill Hoffman Wholesale Nurseries, 3300 SW 48 Ave., Hollywood, Florida 33023

Landscape plants, container grown

Homelite, 70 Riverdale Ave., Port Chester, N.Y. 10573

Chain saws, 18 models; 8 3/4-26 lbs. weight; 12-60 inch bar length; manual, automatic and dual system chain oiler

Hopkins Agricultural Chemical Co., 537 Atlas Ave., Madison, Wisconsin 53701

Chlordane 10% dust, insecticide
Sevin 5% bait, insecticide
Cygon 2E, insecticide, emulsifiable concentrate
Malathion 57E, insecticide, emulsifiable concentrate
Methoxychlor 2E, insecticide, emulsifiable concentrate
Sevin 10% granule, insecticide

H. D. Hudson Manufacturing Co., 154 East Erie St., Chicago, Illinois 60611

Chemical applicators, liquid
Dusters
Flamethrowers
Mistblowers, backpack
Mistblowers, nozzle parts
Pumps
Spray booms, guns
Spray nozzles, complete
Sprayers, boom, cart
Sprayers, complete power unit
Sprayers, compressed air
Sprayers, hand, knapsack
Tanks, spray

Howard Rotavator Co., Inc., Box 100, 343 S. Division St., Harvard, Illinois 60033

Howard Turf Quaker, turf aerification
Howard Rotavator, seedbed preparation

Humble Oil & Refining Company, Houston, Texas 77001

Weed Killer 38, selective weed killer for crops
Weed Killer 80, non-selective weed killer
Orchex[®] 796, adjuvant for herbicides
3408 Spray Oil, adjuvant for herbicides
Flit MLO[®], mosquito larvicide

NEW CARETREE TRANSPLANTER

30" DIAMETER . . . for Tractors and Loaders.

Compact and lightweight for operation in close spaces by one man.

3 curved blades provide open-end operation and tight rounded ball.

Suitable for digging and balling, moving, planting, and root pruning.

Utilizes your present equipment without modification.



CARETREE SYSTEMS

BOX 347, WORTHINGTON, OHIO 43085

Tel. (614) 846-2665

Hydraulic Products Co., Inc., 501 East 42nd Street, Lubbock, Texas 79404

Water pumps, municipal size, heavy duty

Hydroponic Chemical Co., Inc., Box 4300, Copley, Ohio 44321

Hyponex Plant Foods, soluble plant food

Syfonex Sprayers

Panonex Soils, potting soils

Shionex Plant Leaf Shiner

Tyconex Plastic Tapes, tie tapes, planter pole pins

Bugonex Insecticides

Hydro Turf, P.O. Box 3, Elk Grove Village, Illinois 60007

Grounds equipment, sprayers, hydro-seeders, pumps, irrigation hose and fittings

Generators, portable, electric

Roof Commercial Mowers

Fertilizer

Growth retardants

Erosion Control Chemicals

Hypro Division, Lear Siegler, Inc., 375 5th Ave. NW, New Brighton, Minnesota 55112

Pumps, piston, roller for sprayers

Valves

Strainers

Ideal Crane Div., Bert Parkhurst & Co., 15051 E. Admiral Place, Tulsa, Oklahoma 74116

Crane, hydraulic, lift up to 2,500 lbs.

Inject-O-Meter Manufacturing Co., Inc., 820 Thornton, Clovis, New Mexico 88101

Inject-O-Meter injectors, inject fertilizer into irrigation water

OPW Ball Valves, liquid handling applications

Life-Lined Agri-Tanks, fiberglass liquid holding tanks

International Harvester Co., 401 N. Michigan, Chicago, Illinois 60611

International tractors, to 101 hp

International crawlers, 42 to 69 hp

International mowers, rotary cutters; flail type; side mounted sickle

International compact loader, 30 hp

International backhoes and loaders, all sizes

Cub Cadet, lawn and garden tractor

Cadet 76, lawn and garden tractor

Cadet 55 and 75, riding mower

International power mower, rotary power mowers

Sand rake, self-propelled, riding

International Minerals & Chemical Corp., IMC Plaza, Libertyville, Illinois 60048

Thuricide bacillus thuringiensis, insecticide microbial

Viron/H, insecticide, virus

Sul-Po-Mag, fertilizer (natural form of sulphate of potash, magnesium and sulphur)

International Plastics, Inc., Box 278, Colwich, Kansas 67030

Irrigation systems, complete

Irrigation Accessories Co., Box 11214, Portland, Oregon 97211

Riser pipe, sprinkler irrigation equipment

Best pressure regulator

Spike Cuplor, PVC

Cyclamatic equipment

J

Jacklin Seed Co., Division Vaughan-Jacklin Corporation, E. 8803 Sprague, Spokane, Washington 99213

Turfgrass seeds

Fylking Kentucky Bluegrass

Merion Kentucky Bluegrass

Jacobsen Manufacturing Co., 1721 Packard Ave., Racine, Wisconsin 53403

Mower, rotary, push, 20 inch; self-propelled, 21 inch; riding, 60 inch

Mower, reel, self-propelled, riding, tractor, 21 inch to 25 ft., mounted and pull behind gang

Mowing tractors, reel, 76 inch to 19 ft.

Mower, greens; 22 inch self-propelled, triplex riding, 62 inches

Aerators, self-propelled and tractor mounted, 18 inch to 7 ft.

Turf Sweeper, self-propelled and pull behind 48 inches and 60 inches

Seeders, self-propelled and tractor mounted, 21 inch and 48 inch

Top Dresser, self-propelled and truck mounted, 36 inch spreading width

Sod Cutter, 12-18 inch cutting width

Edgers

Utility truck, 12 and 14 hp

Tee mower, 26 inch self-propelled

Trailer, 6 ft. wide and 10 ft. long, tilt bed, single axle

Jacobsen Manufacturing Co., 3456 Washington Ave. N., Minneapolis, Minnesota 55412

Pipe Piper, ploughs, vibratory for pulling wire, cable and flexible pipe

Jari Division, Year-A-Round Cab Corp., Highway 169 N., Box 2075, Mankato, Minnesota 56001

Jari Mower, sickle cut designed for grass, weeds and brush

Jenkins Equipment Co., Dexter, Michigan

Broom, power, walk-behind, Model C-36 Sweepster, 5 hp

JLM Products & Design, 6805 Boysenberry Way, Colorado Springs, Colorado 80907

Soil moisture meter, tests to 12 inch depth, deeper depth units available

Jobe's Tree Food Spikes, 462 East High St., Lexington, Kentucky 40508

Tree food spikes, fertilizer for trees

Johnson Hydraulic Equipment Co., 215 West 78 St., Minneapolis, Minnesota 55420

Work Horse Loader, for compact tractors

Work Horse Terra-blade, for compact tractors

Work Horse Forklift, for compact tractors

Work Horse Terra-comb, for compact tractors

Johnson's Industrial Supply Co., 1941 Karlin Dr., St. Louis, Missouri 63131

Jisco™ Earth Augers, used in electric shop drills for drilling holes around drip area of trees, bushes, shrubs, for deep root feeding, watering and aerating

K

KDM Company, P.O. Box 6814, San Antonio, Texas 78209

Spra-Mate emulsifier, application adjuvant for invert emulsions

K-D Manufacturing Co., P.O. Box 4547, Waco, Texas 76705

K-D Kurb Dresser, tractor mounted edger, 3-point hitch

F. D. Kees Mfg. Co., 700 Park Ave., Beatrice, Nebraska 68310

Powerake®, thatcher or rake

Kom-Pak, shredder, grinder

Kees-Kaster, fertilizer spreader

Powerslice®, aerator, lawn

Kees-Krawler®, sprinkler, lawn, traveling

Garden tools, hand

Kerr-McGee Chemical Corp., Kerr-McGee Bldg., Oklahoma City, Oklahoma 73102

KM Copoloid, fungicide, liquid copper

KM Copper oxide
KM Copper Sulfate
Trona Alkron 100 parathion, insecticide, technical
Trona Metron 80 methyl parathion, insecticide, technical

Kinco Mfg., 2368 Territorial Rd., St. Paul, Minn. 55116
Henderson mower, vertical cut, flail
Rinco, sickle bar

King Bros. Industries, 9245 Noble Ave., Sepulveda, California 91343

Flex-Riser®, flexible riser for sprinkler systems
Sta-Stake®, sprinkler riser support

Knaack Manufacturing Co., 420 East Terra Cotta Ave., Crystal Lake, Illinois 60014

Storage and truck equipment, tools and storage chests, ladder racks for pickup trucks

Kohler Company, Kohler, Wisconsin 53044

Engines, 4-cycle, 4-24 hp, long bore, short stroke design

Karl Kuemmerling, Inc., 4536 Lincoln Way East, Massillon, Ohio 44646

Brush Chipper, up to 8" diameter limbs
Stump King, removes stumps to depth of 27"
Pruning saws
Pole pruners
Tree wound dressing and spray paint
Paint cans, for arborists
Safety saddles, for arborists
Safety signs, "Men Working In Trees" signs
Boots and uniforms for tree trimming

L

Lakeshore Equip. & Supply Co., 10237 Berea Rd., Cleveland, Ohio 44102

Replacement parts, mowers
Golf accessories, flags, cups, etc.
Thiram, fungicide
Urea-formaldehyde, fertilizer
Lakeshore brand fertilizer

Lakes Supply Company, Inc., P.O. Box 101, Dundee, Illinois 60118

Drip weed roller, weed killer applicator

Lakeside Manufacturing Corp., 39 E. Main St., Honeoye, N.Y. 14471

Industrial trailers, 6 to 15 ton rated capacity

Landcaster Pump & Mfg. Co., Inc., 1340 Manheim Pike, Lancaster, Pennsylvania 17604

Chain Saws, five models, 8 1/2-15 lbs. weight, 12-24 inch bar lengths, manual and dual system chain oiler

L. L. Larson Machine, Inc., P.O. Box 308, 1017 N. Santa Fe, Princeville, Illinois 61559

Sprayer pump
Portable water pumps
Sprayer nozzles
Sprayers for ground coverage
Sprayers for trees
Sprayers for turfs
Sprayers, fertilizer, mounted
Spreaders, fertilizer, pull type

Lawn-Boy, Outboard Marine Corporation, P.O. Box 82409, Lincoln, Nebraska 68501

Lawn-Boy®, rotary mowers for lawn and garden
Pioneer®, chain saws, Models 2071, 1072 (Holiday II), "easy arc" starting, automatic chain oil pump

Lawn Medic, Inc., 10 Gates St., Bergen, N.Y. 14416

Urea-formaldehyde, fertilizer
Turf coloring compounds
Aerators

WALK AND THATCH

WALKING THATCHER



Lightweight!
E-Z To
Load!
E-Z To
Handle!

Model 48

18"
Thatching
Width

Model 64

24" Width Also Available

RIDE AND THATCH

PULL THATCHER



Model 110

Pulls Behind
All Riding Mowers
and Garden Tractors

E-Z RAKE GIVES YOU A CHOICE!

VERSATILE WALKING THATCHER propels itself. Features positive gear-and-chain tine drive. Lightweight, folding handles, make storage and transport easy. Counterbalanced leg rests, 4 wheels, make handling easy. Lifts thatch efficiently, and thoroughly. 100% steel construction for long life—simple, minimum maintenance!

PULL THATCHER has 38" thatching width. Attaches quickly, easily behind all riding mowers and garden tractors. Powered by 3 h.p. gear reduction engine.

All E-Z RAKE Thatchers feature tough sleeved spring tines with positive raking action. Bolt-on tines deflect—minimize breakage—are easily and quickly replaced when necessary.

WRITE FOR DETAILS!

E-Z RAKE, INC. LEBANON, INDIANA 46052



Manufacturers of—

E-Z Walking Thatchers • E-Z Front End Thatchers
E-Z Pull Thatchers • Carts and Accessories
E-Z Vac Vacuum Sweepers and Attachments

- Chemical applicators, granular
Seeders, hopper type
Sprayers, boom
Utility trailers
- Lethelin Products Co., Inc., 15 MacQuesten Parkway So.,
Mount Vernon, New York 10550
Borerkil lindane, insecticide, for borers in trees, shrubs
and flowers
Magikil, insecticide bait
- Levco Manufacturers, Inc., Box 72, Wynne, Ark. 72396
Stump remover
- Lifetime Career Schools, 2251 Barry Ave., Los Angeles,
California 90064
Home Study Course in modern landscaping
- Limb-Lopper Co., Inc., 11845 E. Burke St., Sante Fe Springs,
California 90670
Power tools, saws, hydraulic and pneumatic powered
- Lindell Industries, Div. of Lindell Pattern Works, 2689 So.
10th St., Fresno, California 93725
Sweeper vacuum, yard
Blower, leaf blower (Wind-row)
Edger/trimmer, lawn
- Lindig Manufacturing Corporation, 1875 West County Road
C, St. Paul, Minnesota 55113
Series 900, chipper, brush and wood
Kajon, chipper (compact)
M-Series, L-Series, soil shredders
PortaScreens, soil screeners
Concho, compost shredder/grinders
Apache, leaf shredder/baggers
PowerBag, leaf power bagger
Low-Temp, steam aerators
Low-Temp, soil treating carts
- Locke Manufacturing Division, Stellar Lawn Care, 1085
Connecticut Ave., Bridgeport, Conn. 06607
Mowers, reel, self-propelled and riding, 30 inches to 87 in-
ches, rotary
- Lockwood Corp., Box 160, Gering, Nebraska 69341
Sprayers, compete power unit
Irrigation systems, complete
- Lofts Pedigreed Seed, Inc., P.O. Box 146, Bound Brook, N.J.
08805
Baron Kentucky Bluegrass seed
Jamestown Red Fescue
Exeter Colonial Bentgrass
Kingstown Velvet Bentgrass
- Lombard Power Equipment, 418 Rocky River Drive,
Cleveland, Ohio 44135
Pony, chain saw, automatic and thumb button oiling, 6 ½
lbs., 12 inch bar
- London Fog Company, Crystal Bay, Minnesota 55323
London Fogger, foggers, thermal insecticidal type for in-
sect control
- Loveland Industries, Inc., P.O. Box 483, Loveland, Colorado
80537
Mo-Bait, filmer, adjuvant, attractant
Flozine, suspending agent for wettable powders and
flowables
- LTVAC Service Technology Corporation, 2345 W.
Mockingbird Lane, Dallas, Texas 75235
Foamspray™, foaming adjuvant, foaming nozzle loan ser-
vice
- Lumenite Electronic Co., Franklin Park, Illinois
Irrigation controller
- Lundin-Milner, Inc., Los Altos, California
Chipper, will handle up to 3 inch diameter material, pull
type, stationary, mounted; electric, gas, PTO powered
- Lupton Enterprises, 32 Martha St., Tiffin, Ohio 44883
Log splitter, attachment to backhoe, replaces bucket in
minutes
- M**
- Gordon A. MacEachern, Ltd., Toronto, Ontario, Canada
Scoop-Hoop, litter and waste receptacle
- Magline, Inc., 503 S. Mercer, Pinconning, Michigan 48650
Trailevator®, trailer, hydraulic elevating
- Mallinckrodt Chemical Works, 3600 North Second St., St.
Louis, Missouri 63160
Auragreen®, auramine, turf fungicidal dye
Cadminate®, turf fungicide
Fungo™, systemic turf fungicide, broad-spectrum
Calo-Clor®, mercurial fungicide
Calo-Gran®, granular mercurial fungicide
Koban®, turf fungicide
Kromad®, fungicide, broad-spectrum
Spring-Bak®, fungicide
Thiramad®, fungicide, broad-spectrum
Tobaz®, systemic fungicide
Po-San®, herbicide, post emerg., Poa annua control for
fairways
Pre-San®, herbicide, preemerg., Poa annua control and
crabgrass
Trex-San™, herbicide, broad-spectrum
Vitalon® Dark, turf colorant
Spray-Hawk®, mobile turf sprayer
- Johns-Manville Corp., Box 290, 22 E. 40th St., New York,
N.Y. 10016
Diatomite, soil conditioner
- March Irrigation and Supply Co., Muskegon, Mich.
Automatic underground sprinkling systems, designed and
installed
- Marine Development & Research Corp., Freeport, N.Y.
Whip-End Dip, sealer for rope ends
- Markel Electric Products Co., Inc., Buffalo, N.Y.
Utility bodies, heavy-duty, for cab/chassis from 1 ton to
2 ½ tons
- Market-Time, Inc., P.O. Box 294, Northbrook, Illinois 60062
Online Challenger Mark II, chain saw
Online Yard-arm, circular saw on a 6 ft. shaft
- Marlow Pumps Div., ITT Bell & Gossett, Inc., P.O. Box 200,
Midland Park, N.J. 07432
Pumps
- Mars Industries, Inc., 5209 West Broadway, Minneapolis,
Minn. 55429
Mars Chem-Spray, turf sprayer, 5 gal. capacity
Suburban Angle Broom, tractor attachable rotary
sweepers
Suburban Pick-up sweepers, tow-type turf pick-up
sweepers
- Martindale Electric Co., 1375 Hird Ave., Cleveland, Ohio
44107
Protective Mask, mask for personal protection from non-
toxic dusts
Protective Eyeshield, over-spectacle type eyeshield, one-
piece plastic
- Masonite Corporation, 29 N. Wacker Dr., Chicago, Illinois
60606
Fibrex Root Insulator/Weeder, ¼ to ¾ pine bark im-
pregnated with a bio-degradable, selective, pre-emergent
herbicide.

Massey-Ferguson, Inc., 1901 Bell Ave., Des Moines, Iowa 50315

- MF 14, garden tractor 14 hp
- MF 12G, garden tractor 12 hp
- MF 10, garden tractor 10 hp
- MF 8H, garden tractor 8 hp
- MF 7, garden tractor 7 hp
- MF 6, riding lawn mower 6 hp
- MF 5, riding lawn mower 5 hp
- MF 310, self-propelled rotary mower 3.5 hp
- MF 210, push rotary mower 3.5 hp
- MF 228, snow blower 8 hp
- MF 255, rotary tiller 5 hp
- MF 254, rotary tiller 4 hp

Master Sprayers, Inc., 1511 W. 2nd St., Pomona, Calif. 91766
Sprayers, power
Washing unit, high pressure

Mathews Company, Crystal Lake, Illinois 60014
Lawn Genie, mower-sweeper, flail, 3-point hitch, 34 bu. capacity hopper, PTO driven, 6 ft. cut

J. J. Mauget Co., P.O. Box 3422, Burbank, Calif. 91504
Mauget, tree injectors
Inject-A-Min, nutrients
Inject-A-Cide, insecticides
Mauget Capsules, fungicide, benomyl

M-B Company, 1615 Wisconsin Ave., New Holstein, Wis. 53061

- M-B Fitchburg brush chipper, brush and limb chipper
- Rotary sweepers, tractor and loader mounted
- Refuse compactor, mobil compactor, tow type

McCulloch Corp., 6101 W. Century Blvd., Los Angeles, California

- Chain saws, Power Mac 6A, Mac 10-10A, Pro Mac 60, 7-10A, SP-80, Super 250, SP-125, 6-70, 660; Mini-Mac electric (Models 1, 6, 6A)
- Portable generators, Mite-E-Lite

McDonough Power Equipment, Inc., McDonough, Georgia 30253

- Mower, rotary, push-type and riding
- Mower, reel, self-propelled

McLaughlin Gormley King Co., 1715 S.E. Fifth St., Minneapolis, Minnesota 55414

- Pyrethrum and Synergized Pyrethrum, insecticide, for mosquito and fly control

Melroe Division of Clark Equipment, Gwinner, North Dakota 58040

- Melroe M-371 Bobcat Loader, 4 wheel drive, front end loader with landscape attachments
- Melroe M-610 Bobcat Loader, 4 wheel drive, front end loader with landscape attachments
- Melroe M-970 Bobcat Loader, 4 wheel drive, front end loader with landscape attachments

Meinhardt Products Div., 2401 Gardner Rd., Broadview, Illinois 60153

- Weed Out, herbicide, selective

Melnor, Turf Irrigation Division, 1 Carol Place, Moonachie, New Jersey 07074

- Shrub nozzle adapters
- Stationary spray heads
- Pop-up spray heads
- Rotary spray heads
- Pulsating spray heads
- Solenoid valves
- Time controls
- Quick coupler valves
- Pipe and fittings



The mobile 'Boom Sprayer' offered by THE GUILDSMEN CO. takes the guess work out of liquid chemical spraying. Now you or your operator have a POSITIVE indication of the proper spraying speed.

- NO PARTS TO WEAR OUT
- ALL STAINLESS STEEL
- EASY TO USE, NO TRAINING
- SELF CONTAINED
- ADD ON LENGTH

Write for details TODAY!!!!

7500 Jonestown Rd., Harrisburg, Pa. 17112

For More Details Circle (148) on Reply Card



**11
NEW
FEATURES**
make HI-RANGER®
even better!

Already No. 1, now HI-RANGER moves out far ahead with design features that give owners and operators the safest, most productive personnel towers for any overhead work. Get the facts. Send for your new "5F" Catalog today... you will appreciate what we can do for you.

HI-RANGER Aerial Towers meet the "American National Standard for Vehicle-Mounted Elevating and Rotating Work Platforms ANSI A92.2-1969," as required by the Williams-Steiger Occupational Safety and Health Act of 1970; Part 1910, Occupational Safety and Health Standards; Section 1910.67.

HI-RANGER



MOBILE AERIAL TOWERS, INC.



MOBILE AERIAL TOWERS, INC. • Dept. N • 2314 BOWSER AVE. • FORT WAYNE, IND. 46803

For More Details Circle (116) on Reply Card

59

Merck & Co., Merck Chemical Div., E. Lincoln Ave., Rahway, New Jersey 07065

Mertect® 140-F, thiabendazole, fungicide, flowable
Mertect® 340-F, thiabendazole, fungicide, flowable
Mertect® 160, fungicide, wettable powder
Mertect® 360, fungicide, wettable powder
Hormodin®, indole-3-butyric acid, root inducing substance
Gibrel® gibberellic acid, plant growth substance
8-Hydroxyquinoline Citrate Oxine Citrate, flower preservative

Merion Bluegrass Association, 101 Park Ave., New York, N.Y. 10017

Merion Kentucky Bluegrass

Miller Chemical & Fertilizer Corp., 3006 W. Coldspring Lane, Baltimore, Md. 21215

Miller, insecticides, fungicides, fertilizers, herbicides

Miller Tilt Top Trailer, Inc., 450 S. 92 St., Milwaukee, Wisconsin 53214

Tilt Top®, machinery hauling trailer, changes quickly from between the wheel to over the wheel trailer
Ramp Champ®, over-the-wheel platform trailer; both trailers available with new gooseneck hitches

Milwaukee Sewerage Commission, P.O. Box 2079, Milwaukee, Wisconsin 53201

Milorganite®, activated municipal sludge, 5-3-0 analysis

3M Company, 501E N.E. 28th St., Pompano Beach, Florida 33064

Lakes and Waterways Management Service (LAWMS), vegetation management of lakes, canals, golf courses

3 M Company, New Business Ventures Division, 3 M Center, St. Paul, Minnesota 55101

System M, aquatic algicide, WP, controls chara and filamentous algae
System E endothall, mariner brand aquatic herbicide (Fla. only)
Envirocap C, controlled release algicide, encapsulated formulation of copper sulfate

Mine Safety Appliances Co., 201 N. Braddock Ave., Pittsburgh, Pa. 15208

Respirators
Helmets
First-Aid kits
Safety equipment
Gas masks

Miracle Bark, Inc., P.O. Drawer O, Diboll, Texas 75941

Miracle Bark, soil conditioner

Mitsubishi International Corp., 1927 S. Van Ness Ave., Fresno, California 93721

Tractors
Tillers

Mitts & Merrill, Inc., 109 McCoskry St., Saginaw, Michigan 48601

Chipper, brush, staggered knife pattern, swing away folding feed chute, positive safety lock pin

Mobile Aerial Towers, Inc., 2314 Bowser Ave., Fort Wayne, Indiana 46803

Hi-Ranger, hydraulically operated, aerial personnel platforms, 360° rotation, insulated bucket

Mobil Chemical Co., Industrial Chemical Div., 401 E. Main St., Richmond, Va. 23208

Folex®, herbicide
Mocap®, insecticide, granular
Phosfon®, growth retardant, liquid
V-C 13®, nematicide

Mono Mfg. Co., Box 2787, Commercial St. Station, Springfield, Missouri 65803

Chain saws, three models, 10-14 lbs. weight, manual chain oiler, 12-21 inch bar lengths

Monsanto Company, 800 N. Lindbergh Bldg., St. Louis, Missouri 63166

Roundup, herbicide, bareground

Moody Sprinkler Co., Inc., P.O. Box 240, Arcadia, California 91006

Rainmaster®, automatic controllers, 10, 20, 30 station, electric or hydraulic valves
Moody Sand Separators, flow rate 200-4100GPM
Moody Central Programmer, controls from 6-18 slave index timing units
Valves, hydraulic or electric, automatic diaphragm, open or closed
Pop up sprinklers, up to 30 ft. diameter stream spray
Stationary lawn sprinklers, up to 32 ft. diameter
Shrubbery sprinklers, adjustable
Impact sprinklers, ½ inch to 1 ¼ inches threaded connection, part or full circle
Quick coupling valves, standard, rubber or with lock cover
Moody Aqua-Mole, earth borer
Pop up rotary sprinklers, full or part circle

Mott Corp., 500 Shawmut Ave., La Grange, Illinois 60525

Mowers, flail

MTD Products, Inc., 5389 W. 130 St., Cleveland, Ohio 44111

Rotary Vacuum Shredder Bagger, 5 hp, 3 stage cutting action blade

Mud Cat, Div. of National Car Rental, 5501 Green Valley Dr., Minneapolis, Minnesota 55431

Weed harvester, aquatic

F. E. Myers & Bro., Co., 400 Orange St., Ashland, Ohio 44805

TL10E2, fairway sprayer
TL10ETMG, greens sprayer
TL12TMG, 3 point hitch fiberglass sprayer

N

Nalco Chemical Co., 180 N. Michigan Ave., Chicago, Illinois

Nalkil bromacil, herbicide, bareground, granular and liquid
Nalkill weed killer, diuron, herbicide, granular

National Crane Corp., Waverly, Nebraska 68462

Cranes

National Hydro-Ax, P.O. Box 568, Owatonna, Minn. 55060

Hydro-Ax, brush cutter/tractor, hydraulic driven, cuts 8 ft. swath, articulated power steering, 4-wheel hydrostatic drive, wire-reinforced high flotation tires, clears up to 1 ½ acres of brush and small trees per hour

National Mower Co., 700 Raymond Ave., St. Paul, Minnesota 55114

Power mower, 21 inch and 25 inch, reel
Rider mower, 30 inch, reel
Triplex, 68 inch and 84 inch cut

L. R. Nelson Mfg. Co., Inc., 5901 N. Prospect Rd., Peoria, Illinois 61614

Sprinkler Irrigation Equipment, sprinklers, valves, controllers and other accessories

New Holland, Div. of Sperry Rand Corporation, New Holland, Pennsylvania

Loader, long reach boom

Niagara Chemical Division, FMC Corporation, 100 Niagara St., Middleport, New York 14105

Tandex® Kaarbutilate, herbicide
DNBP, insecticide