

PRODUCTS

Advanced Drainage Systems is offering its corrugated plastic drainage tubing in a choice of two synthetic wrap



materials for protecting subsurface drains against the most challenging siltation problems. ADS Drain Guard, a 100% nylon envelope is an ultraporous filter that restrains and stabilizes problems solids such as fine sand and silts.

Circle No. 178 on Reader Inquiry Card



Finn Corp.'s T80 tank features a low profile tank design for ground level loading and a hydraulic powered, variable speed paddle agitator. The hydraulic seeder can be trailed to a site with ease and stability. It is a viable option to higher priced chasis-mounted units.

Circle No. 179 on Reader Inquiry Card



New Trailblazer™ sweeps turf/hard surfaces

At last! A rugged all-terrain sweeper that can clean both your turf and hard-surfaced areas. Provides productivity undreamed of before.

TENNANT® Trailblazer™ sweeps up to 3 acres of turf or 7 acres of hard surfaces per hour. Has more power than any turf machine.

Lease/time purchase/rental plans available. Write: Tennant Company, 701 N. Lilac Dr., Minneapolis, MN 55440.



Climbs curbs, articulates to sweep hard-to-reach places.

TENNANT® MAINTENANCE SYSTEMS
sweepers • scrubbers • scarifiers • floor coatings

Call Toll Free: 800-328-5727 Ext. 768S

Circle No. 134 on Reader Inquiry Card

Wyo-Ben's Envirogel is manufactured from bentonite clay and is processed for use in reducing the seepage of fluids through porous soils. According to Wyo-Ben, bentonite can absorb five times its weight of water and expand to 12-16 times its dry volume.

Circle No. 180 on Reader Inquiry Card

The model 10 Turf-Truk is the latest addition to the line of Hester Ag-Truk three-wheeled ranch machines. The model 10, manufactured by Horizon



Services Company, features a two-passenger bench seat, electric start G300 Honda industrial engine, 3 ft. by 4 ft. cargo box and a load carrying capacity of 1200 lbs.

Circle No. 181 on Reader Inquiry Card

Custom Products' all-weather, steel Cozy Cabs are now available for the brand new John Deere compact utility



tractor. The Custom 300 cabs are ROPS-tested to meet OSHA requirements and feature all-steel construction, tinted safety glass, sliding rear window and vinyl padded interior.

Circle No. 182 on Reader Inquiry Card

Continues on page 53

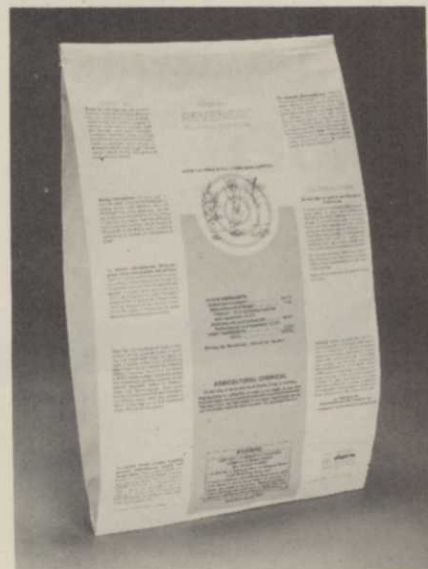
Vermeer TS-24 Tree Spade is designed primarily for digging and packaging small trees and shrubs. It is engi-



neered to work as a tree packaging attachment for any skid steer or front end loader with an auxiliary hydraulic hookup and a minimum capacity of 1,200 lbs. On skid steer loaders, the 910-lb. unit slips onto the lift forks.

Circle No. 183 on Reader Inquiry Card

Hopkins' Revenge is a double-acting systemic herbicide for control of established annual and perennial grasses on



non-crop land such as roadsides and rights-of-way. It contains two herbicides, Dowpon M and Sodium TCA and is formulated to combat Johnsongrass, Bermudagrass, cattails and other pest grasses.

Circle No. 184 on Reader Inquiry Card

Mertz, Inc.'s Drill King is a mobile hydraulic unit that can drill holes from 3 inches to 36 feet. The four-wheel-drive



drill is mounted on its own welded steel chassis, with articulated steering and hydraulic ground drives. All systems are operated by hydraulics.

Circle No. 185 on Reader Inquiry Card

Tennant Co.'s Trailblazer is a grounds maintenance machine that is manufactured to sweep turf and hard surfaces at rates of 3 to 7¼ acres per hour. According to Tennant, the machine uses either a brush or paddle to clean a 60-in. path and simply drives from one surface to another with no adjustments needed. A jet stream of air propels litter



into a 2.6-cubic-yard hopper and a 500-sq.-ft. filter permits nearly dust-free operation.

Circle No. 186 on Reader Inquiry Card

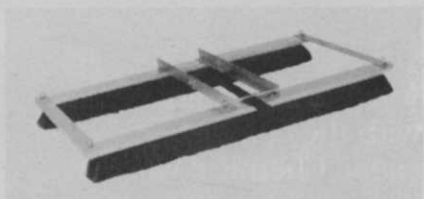
Standard Golf Co. has introduced a drag brush for topdressing greens that is designed to eliminate the stress caused by metal drags. The Pro-Line Brush-Easy mounts six heavy-duty brushes in an aluminum frame that has a total weight of 22 lbs. The tow bar is

Continues on page 56

Does the condition of your turf make you see red?

Switching to Pennfine Perennial Ryegrass could color your outlook. It's long been the standard of quality against which other varieties are compared. Why not simplify your life? Go with the most widely used fine-leaved perennial ryegrass in the nation. By the way, if you have trouble finding Pennfine, just ask the turf pro with the best-looking turf around. Chances are he's already using it. Pennfine Perennial Ryegrass, P.O. Box 923, Minneapolis, MN 55440

Circle No. 126 on Reader Inquiry Card



designed so that the Brush-Easy may towed in either direction for longer brush life.

Circle No. 187 on Reader Inquiry Card

Excel Industries has introduced a V-blade snow removal attachment for Hustler grounds maintenance tractors



EXCEL HUSTLER V-Blade

with a free float feature to follow uneven surfaces. While many V-blade systems are ineffective on uneven surfaces, the Excel float feature permits the blade to follow contour and clear a swath 60-in. wide.

Circle No. 188 on Reader Inquiry Card

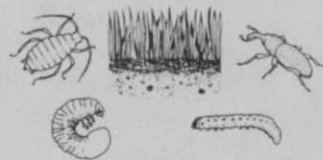
Bunton Co. has added the 19 H.P. Wisconsin diesel engine to its out-front rotary tractor line. The air-cooled engine has a forged crankshaft, cast iron



cylinder and die-cast aluminum crankcase. The fuel injection pump is automatically reset by the governor for quick starts and the two-cylinder unit weighs only 194 lbs.

Circle No. 189 on Reader Inquiry Card

DESTRUCTIVE TURF INSECTS



BY

DR. HARRY NIEMCZYK, ENTOMOLOGIST

Destructive Turf Insects by Dr. Harry Niemczyk covers pests of warm and cool season grasses and contains over 130 color photos. Included is a color photo guide to identifying insects and mites that inhabit the soil, thatch, leaves and stems.

Circle No. 190 on Reader Inquiry Card

ARE YOU A BUSINESSMAN INTERESTED IN EXPANDING INTO PROFESSIONAL TURF CARE?

GREEN PRO COOPERATIVE SERVICES is the only non-franchise organization that offers you complete training, economical equipment, all necessary forms, contracts, advertising and promotion training, proven advertising brochures, and COMPLETE BACK-UP.

We offer our complete services to those who do not want to give up their individuality—nor want to pay huge franchise fees—yet realize that guidance will propel them toward success faster and WITHOUT costly errors. Errors which are inevitable when “learning-by-doing-it-yourself.”



Robert Riley

CALL

(516) 483-0100

or write

Green Pro Cooperative Services

380 S. Franklin Street • Hempstead, New York 11550

Circle No. 111 on Reader Inquiry Card