

Wheel Horse B-80 4-speed, 8 hp tractor featuring unitized steel frame; friction disc attachment clutch; turf saver tires; optional electric attachment lift; and a 3-way safety interlock system

Wheel Horse D-Series Attachments; 60" rear mount mower; 48" side discharge mid-mount mower; 56" snow/dozer blade; 50" grader blade; 50" tiller; 36" aerator; 38" or 31" lawn sweeper; 32" lawn roller; 4-wheel wagon; 2-wheel dump cart; and a 48" snowthrower

Wheel Horse C-Series Attachments, 48" side discharge mower; 42" side discharge mower; 36" side discharge mower; 36" rear discharge mower; 42" snowthrower; 42" snow/dozer blade; 40" grader blade; 36" tiller; 36" aerator; 38" or 31" lawn sweeper; 32" roller; 2-section cultivator; harrow; 32" disc; lawn vacuum; 4-wheel wagon; and a 2-wheel dump cart

Wheel Horse B-Series Attachments, 36" side discharge mower; 36" rear discharge mower; 37" snowthrower; 42" snow/dozer blade; 40" grader blade; 36" aerator; 38" or 31" lawn sweeper; 32" lawn roller; 32" disc; 2-section cultivator; harrow; 36" tiller; 4-wheel wagon; and a 2-wheel dump cart

Wheel Horse A-Series Attachments, for A-80 42" snow blade; 36" aerator; 38" or 31" lawn sweeper; 32" lawn roller; 4-wheel wagon; and a 2-wheel dump cart

Willmar Mfg. Co., Wilmar, Minn.

Spreader, pull-type, floatation tires, spreads up to 1½ tons per load

Willson Products Div., Ray-O-Vac. Co., 2nd and Washington Aves., Reading, Pa.

Masks, gas; dust  
Respirators  
Safety Equipment  
Helmets

**Wisconsin Marine, Inc.**, P.O. Box 28, Lake Mills, Wisconsin 53551

Bob-Cat, model 520-1, snow thrower, self-prop. 5 hp 20" 2-speed

Bob-Cat, model 520-2 snow thrower, self-prop., 5 hp 20" single speed

Bob-Cat, model 724-1 snow thrower, self-prop., 7 hp 24" 2 speed

Bob-Cat, model 724-2 snowthrower, self-prop., 7 hp 24" 2 speed

Bob-Cat, model 828-2 snow thrower, self-prop., 8 hp, 28"

Bob-Cat, model t-16-61, riding twin hydro mower, 16 hp 61 inches

Bob-Cat, model M-21 rotary lawn mower, 21 inch, engine options: 3.5 hp, 4 hp, 4 heavy duty, 5 H.D.

Bob-Cat, model M12-3.5 lawn trimmer, 12 inch, 3.5 hp

Wood Brothers, Inc., Hwy. 2 So., Oregon, Ill. 61061

RM 59, rear mounted rotary lawn mower; three blades cut a 5-foot swath; adapts to any standard 3-point hitch

## Y

Yardman, The Leisure Group, Inc., Jackson, Michigan  
Snow throwers, tractors, 8-20 hp

**Yazoo Mfg. Co.**, 3607 Livingston Rd., Jackson, Miss. 39216  
Yazoo Master Mowers, rotary 20"-76"; walking, riding tillers, edgers

**Year-A-Round Cab Corp. (Jari Div.)**, P.O. Box 2075, Mankato, Minnesota 56001

Jari Chief, 3 hp, 32" sickle

Jari Monarch, 4 hp, 36" sickle

York Modern Corporation, Mill and Watson St., Unadilla, N.Y. 13849

York, rakes; landscape and lawn grooming

# Cross Reference Guide To Manufacturers by Items

## AERATORS

Brinly Hardy Co.  
Hahn Inc.  
Howard Rotavator Co., Inc.  
Jacobsen Mfg. Co.  
F. D. Kees Mfg. Co.  
Ryan, OMC-Lincoln  
Simplicity Mfg. Co., Inc.  
Wheel-Horse Products

## AERIAL BUCKET ACCESSORIES

Plastic Techniques, Inc.

## AERIAL BUCKET LIFTS

Asplundh Chipper Co.  
Baker Equipment Mfg. Co.  
Correct Mfg.  
McCabe-Powers Body Co.  
Mobile Aerial Towers, Inc.  
Pitman Mfg. Co., Div. A. B.  
Chance Co.  
Reach-All Manufacturing and  
Engineering Co.  
Selma Trailer & Mfg. Co.

## AERIAL LADDERS

Adventure Line Mfg. Co.  
Up-Right Scaffolds

## AERIAL PLATFORMS

Adventure Line Mfg. Co.  
Baker Equipment Mfg. Co.  
H. D. Hudson Mfg. Co.

Lift-Quik Mfg. Co. (golf car lift)  
Up-Right Scaffolds  
Utility Body Co.

## AIR COMPRESSORS

Rego Div., Golconda Corp.

## AIRCRAFT, FIXED WING

Grumman Aircraft Corp.  
Piper Aircraft  
Rockwell International

## AIRCRAFT, HELICOPTER

Bell Helicopter Co.  
Republic Aviation Corp.  
Sikorsky Aviation Div.

## ALTERNATORS

Friend Mfg. Co.  
Stanley Hydraulic Tools, Div. The  
Stanley Works

## AMPHIBIOUS EQUIPMENT

Quality Marsh International

## AQUATIC WEED HARVESTER

A. O. A. Research & Development,  
Inc.  
Air-Lec Industries, Inc.  
Aquamarine Corp.  
Mud Cat Div. Of National Car Rental  
Weed Eaters, Inc.

## ARBORIST SUPPLIES

American Arborist Supplies  
Bartlett Mfg. Company  
Creative Sales, Inc.  
Hortiscap, Inc.  
Karl Kuemmerling, Inc.  
Product Development International  
Safety Test & Equipment Co.

## AUGERS

Contree Sales, Inc.  
Ferti-Feeder  
Hoffco, Inc.  
Johnson's Industrial Supply Co.  
Pitman Mfg. Co.  
Village Blacksmith

## AUGERS, EARTH

Allis-Chalmers Mfg. Co.  
Baker Equipment Engineering Co.  
Bartlett Mfg. Co.  
Johnson's Industrial Supply Co.

## AUXILIARY POWER UNITS (See Generators)

## BACKHOES

Allis-Chalmers  
Arps Corp.  
Charles Machine Works  
Ford Tractor Operations,  
North America  
Howard Rotavator Co., Inc.  
International Harvester Co.  
Massey-Ferguson, Inc.  
(Industrial Products)  
Schutt's Equipment Co.  
Vermeer Mfg. Co.  
Waldon, Inc.

### BAGS

B. A. G. Corporation  
Bemis Company

### BATTERIES

The Prestolite Co.

### BATTERY CLAMPS

Dadco

### BATTERIES, STORAGE

ESB Brands, Inc.  
Trojan Battery Company

### BATTERY CHARGERS

ESB Brands, Inc.  
Onan Division of Onan Corp.  
Universal Motor Div. Medalist Ind.

### BINS, PORTABLE

Royer Foundry & Machine Co.

### BLADES, DOZER-SCRAPER

(Also See Leveler)

Allis-Chalmers  
Arps Corporation  
Austin Products, Inc.  
BMB Company, Inc.  
Brillion Iron Works, Inc.  
J. I. Case  
Deere & Co.  
DriAll, Inc.  
Eversman Mfg. Co.  
Ford Tractor Operations,  
North America  
Gravely, Div. Clarke-Gravely  
Hesston Corp., Lawn Equipment Div.  
International Harvester Co.  
Johnson Hydraulic Equip. Co.,  
Div. Arps Corp.  
Massey-Ferguson, Inc.  
Melroe Mfg. Co.  
Simplicity Mfg. Co., Inc.  
Walden, Inc.  
Western Products  
Wheel-Horse Products, Inc.

### BLOWERS

Billy Goat  
Conaway, Inc.  
Echo Chain Saw Div., Kioritz Corp.  
of America  
Giant-Vac Mfg., Inc.  
Hesston Corp., Lawn Equipment Div.  
Mid-State Metal Casters & Mfg. Co.  
Papec Machine Co.  
Parker Sweeper Company  
Robco, Inc.  
Solo Motors, Inc.  
Vandermolen Corp.

### BOOM DYE MAKER

Contree Sales, Inc.

### BORING UNIT

Charles Machine Works, Inc.  
Toro Irrigation Division  
Wet Mfg. Co.

### BRIDGES, PORTABLE

Standard Mfg. Co.

### BROOMS

(See Sweeper/Vacuums)

Clarke Div., Clarke-Gravely Corp.  
FMC Corp., Sweeper Division  
Parker Sweeper Company  
Sweepster, Jenkins Equipment Co.  
Waldon, Inc.

### BRUSH CUTTERS

Asplundh Chipper Co.

Bombardier Ltd.  
E. L. Caldwell & Sons, Inc.  
Conaway, Inc.  
Deere & Co.  
Echo Chain Saw Div., Kioritz Corp.  
of America  
Friend Mfg. Corp.  
Hoffco, Inc.  
International Harvester Co.  
McCulloch Corp.  
National Hydro-Ax Inc.  
H. K. Porter, Inc.  
Rowco Mfg. Co., Inc.  
Stihl American, Inc.  
The Vandermolen Co.

### BRUSH HOOKS

Asplundh Chipper Co.  
Bartlett Mfg. Co.  
Pitman Mfg. Co.

### BUILDINGS (GOLF)

Game Time, Inc.

### CARTS, SOIL TREATING

Lindig Mfg. Corp.

### CHAIN, DECORATIVE

Ginther Equipment Corp.  
Plasti-Chain Corporation

### CHAIN SAWS

(See Saws, Chain))

### CHEMICAL APPLICATOR, DRIP

Lakes Supply Co., Inc.

### CHEMICAL APPLICATORS, GRANULAR

American Arborist Supplies  
Asplundh Tree Expert Co.

Avco Ezee Flow  
John Blue Co.  
Buffalo Turbine Ag. Equip. Co.  
Contree Sales, Inc.  
Echo Chain Saw Div., Kioritz Corp.  
of America  
FMC Corp., Ag. Machinery Div.  
Friend Mfg. Corp.  
Gandy Co.  
Herd Seeder Company, Inc.  
Lakes Supply Co., Inc.  
Larson Machine, Inc.  
Lawn Medic, Inc.  
Lely Corp.  
Public Health Equip. & Supply Co.  
Solo Motors, Inc.  
Walsh Manufacturing Co.  
Waymark

### CHEMICAL APPLICATORS, LIQUID

Anchem Products, Inc.  
Asplundh Chipper Co.  
Avco Ezee Flow Div.  
John Blue Co.  
The Broyhill Co.  
Buffalo Turbine Ag. Equip. Co.  
Century Engineering Corp.  
Contree Sales, Inc.  
Deere & Co.  
Echo Chain Saw Div., Kioritz Corp.  
of America  
Red Ewald, Inc.  
FMC Corp., Ag. Machinery Div.  
Friend Mfg. Corp.  
Great Lakes Chemical Div.  
H. D. Hudson Mfg. Co.  
Lakes Supply Co., Inc.  
Larson Machine, Inc.  
Leigh Products, Inc.  
Melnor Industries, Inc.

# BROADLEAF WEEDS

## controlled positively

with maximum safety  
to sensitive grasses  
and ornamentals



# trimec

TURF HERBICIDES®

U.S. Patent  
3,284,186

THE MOST CONTROL AT THE LEAST EXPENSE

## PBI - GORDON CORPORATION

300 SOUTH THIRD STREET KANSAS CITY, KANSAS 66118

Telephone: 913/342-8780

F. E. Myers & Bro. Co.  
 Root-Lowell Corp.  
 Solo Motors, Inc.  
 The Vandermolen Co.  
 Walsh Manufacturing Co.  
 Waymark

#### CHESTS, TOOL

Hemco Corporation  
 Knaack Mfg. Co.

#### CHIPPERS (Also See Shredders)

American Arborist Supplies  
 Asplundh Chipper Co.  
 Billy Goat  
 FMC Corp., Sweeper Div.  
 F. D. Kees Mfg. Co.  
 Karl Kuemmerling, Inc.  
 Lindig Manufacturing Corp.  
 M-B Company  
 Metro-Chipper, Vestar Div.,  
 Morbark Ind.  
 Mitts & Merrill Inc.  
 Morbark Industries, Inc.  
 Olathe Mfg., Inc.  
 Piqua Engineering Inc.  
 Precision Chipper Corporation  
 Royer Foundry & Machine Co.  
 Safety Test & Equipment Co.  
 Vandermolen Corp.  
 Vermeer Manufacturing Co.

#### COMBS, TURF

Blue Bird International, Inc.  
 Johnson Hydraulic Equip. Co.,  
 Div. Arps Corp.  
 Parker Sweeper Co.  
 Ryan, OMC-Lincoln

#### COMPACTORS

B.A.G. Corporation  
 Gotham Chicago Corp.  
 M-B Company  
 Val-Jac Mfg. & Supply Co., Inc.  
 Wayne Engineering Corp.

#### CONTAINERS

Eagle Mfg. Co.  
 Freund Can Co.



**Bandini bags it!**

**NITROFORM®**  
 organic nitrogen



The economical nitrogen that feeds for months because it has different release rates... like time-release cold capsules.

**Turf and Horticultural Products, Synthetics Dept.**  
**Wilmington, Delaware 19899**

Registered trademark of Hercules Incorporated. STH74-25

#### CRANES

Adventure Line Mfg. Co.  
 Baker Equipment Mfg. Co.  
 Blue Bird International, Inc.  
 Cascade Corporation  
 Dico Co., Inc.  
 Ideal Crane Div., Bert Parkhurst  
 Pitman Mfg. Co.  
 Reach-All Manufacturing &  
 Engineering Co.  
 Rental Equip. Mfg. Co.  
 Schwartz Mfg. Co.

#### DISCS, CULTIVATING

Allis-Chalmers Mfg. Co.  
 Deere & Co.  
 Engineering Products Co.  
 Ford Motor Co., Tractor Div.  
 International Harvester Co.  
 Massey-Ferguson, Inc.  
 Wheel-Horse Products, Inc.

#### DRAINAGE TUBING

ADS-Advanced Drainage Systems  
 Amoco Chemicals Corp.  
 Certain-Teed Daymond Co.  
 Hancor, Inc.

#### DRILLS (FIELD)

(Also See Earth Augers &  
 Post Hole Diggers)

Deere & Co.  
 Gandy Co.  
 Ground Hog, Inc.  
 Hoffco, Inc.  
 International Harvester Co.  
 Massey-Ferguson, Inc.  
 McCulloch Corp.

#### DRILLS (HAND & POWER TOOL)

Bartlett Mfg. Co.  
 Black & Decker Mfg. Co.  
 Fairmont Hydraulics  
 Hoffco, Inc.  
 Limb-Lopper Co., Inc.  
 Skil Corp.  
 Solo Motors, Inc.

#### DUMP CARTS

J. I. Case Co., Outdoor Power  
 Equipment Div.

#### DUSTERS, HAND

Leigh Products, Inc.  
 Public Health Equip. & Supply Co.  
 Robco, Inc.

#### DUSTERS, POWER

John Blue Co., Inc.  
 Buffalo Turbine Ag. Equip. Co.  
 Curtis Dyna Products Corporation  
 Echo Chain Saw Div., Kioritz Corp.  
 of America  
 FMC Corp., Ag. Machinery Div.  
 H. D. Hudson Mfg. Co.  
 Leigh Products, Inc.  
 Robco, Inc.  
 Root-Lowell Corp.  
 Solo Motors, Inc.  
 The Vandermolen Co.

#### EARTH AUGERS

(Also See Post Hole Diggers)

Ground Hog, Inc.  
 Hoffco, Inc.  
 Johnson's Industrial Supply Co.  
 McCulloch Corp.  
 Stihl American  
 Stone Construction Equipment Inc.

#### EDGERS

Black & Decker

Cooper Mfg. Co.  
 Gandy Company  
 Jacobsen Mfg. Co.  
 K-D Manufacturing Co.  
 Rotary Power, Inc.  
 Ryan, OMC-Lincoln  
 Village Blacksmith  
 Yazoo Mfg. Co.

#### EDGING, LAWN

Hortiscape, Inc.  
 Rotary Power, Inc.  
 Joseph T. Ryerson & Son, Inc.

#### ENGINES, DIESEL

Teledyne Wisconsin Motor

#### ENGINES, GASOLINE

Briggs & Stratton Corp.  
 Clinton Engines Corporation  
 Kohler Company  
 Onan Div. of Onan Corp.  
 Solo Motors, Inc.  
 Tecumseh Products Co., Engine Div.  
 Teledyne Wisconsin Motor

#### ENGINE STAND

Blue Bird International, Inc.

#### EROSION CONTROL MATERIALS

American Excelsior Corp.  
 Conwed Corporation  
 Grass Growers, Inc.

#### FERTILIZER APPLICATORS

Gandy Company

#### FERTILIZER INJECTION EQUIPMENT (Also See Injection Equipment)

Agresults, Inc.  
 Andrasko Engineering Co.

#### FITTINGS, PIPE

Melnor Industries, Turf Div.  
 Plastiline Inc.  
 R. & G. Sloane Mfg. Co.

#### FLAMETHROWERS (SPRAYERS)

R. E. Chapin Mfg. Works, Inc.  
 Echo Chain Saw Div., Kioritz Corp.  
 of America  
 FMC Corp., Ag. Machinery Div.  
 H. D. Hudson Mfg. Co.  
 Leigh Products, Inc.  
 Public Health Equip. & Supply Co.  
 Solo Motors, Inc.  
 Tree-Ject Co.  
 The Vandermolen Co.

#### FOGGERS

Curtis Dyna Products Corp.  
 Echo Chain Saw Div., Kioritz Corp.  
 of America  
 London Fog Company  
 Leigh Products, Inc.  
 Public Health Equip. & Supply Co.  
 The Vandermolen Co.  
 Village Blacksmith

#### FORK LIFTS

Allis-Chalmers Mfg. Co.  
 Badger-Dynamics, Inc.  
 Brouwer Turf Equip. Ltd.  
 Clark Equipment Co.  
 International Harvester Co.  
 Massey-Ferguson, Inc.  
 (Industrial Products)  
 Otis Materials Handling  
 TCI, Inc.  
 Waldon, Inc.

**WEEDS TREES and TURF**

For More Details Circle (144) on Reply Card

### FORK LIFT (ATTACHMENT)

Century Engineering Corp.  
Harvestall Industries, Inc.  
Waldon, Inc.

### FUMIGANT APPLICATORS

John Blue Co., Inc.  
Red Ewald, Inc.

### GENERATORS

Conaway, Inc.  
Friend Mfg. Corp.  
Howard Rotavator Co., Inc.  
Hydro Turf  
McCulloch Corporation  
Olathe Mfg. Inc.  
Onan Div. of Onan Corp.  
Solo Motors, Inc.  
Universal Motor Div. Medalist Ind.

### GOGGLES

(Also see Masks, Face)

American Optical Corp.  
Martindale Electric Co.

### GOLF ACCESSORIES

Container Development Corp.  
Coursigns Inc.  
Fore-Par, Inc.  
Ginther Equipment Corp.  
Lakeshore Equipment & Supply Co.  
Par Aide Products Co.  
Plasti-Chain Corporation  
Standard Mfg. Co.

### GOLF CARS

(Also See Turf Vehicles)

Club Car, Inc.  
Cushman, OMC-Lincoln  
E-Z Go Car, Div. of Textron  
G. E. M. Products, Inc.  
Harley-Davidson Motor Co., Inc.  
Otis Elevator Company, Special Vehicle Div.  
Pargo, Inc.  
Westinghouse, Electric Vehicles

### GRADERS

Allis-Chalmers Mfg. Co.  
E. L. Caldwell & Sons, Inc.  
Deere & Co.  
Engineering Products Co.  
Ford Motor Co., Tractor Div.  
Simplicity Mfg. Co., Inc.  
Wheel-Horse Products, Inc.

### GREENHOUSES

Simplex Mfg. Co.

### HARD HATS, HELMETS

American Optical Company  
Glendale Optical Company  
Jomac Products Co. Inc.  
Safeline Products  
Welsh Mfg. Co.  
Wilson Products Div., Ray-O-Vac Co.

### HARROW, SPIKE-TOOTHED

Allis-Chalmers Mfg. Co.  
Brillion Iron Works, Inc.  
The Broyhill Co.  
Clark Equipment Co.  
Deere & Co.  
Engineering Products Co.  
Finn Equipment Co.  
Ford Motor Co., Tractor Div.  
Fuerst Brothers  
International Harvester Co.  
Lely Corporation  
Simplicity Mfg. Co., Inc.

Vicon Farm Machinery, Inc.  
Wheel Horse Products, Inc.

### HARROW, SPRING-TOOTHED

Allis-Chalmers  
Brillion Iron Works, Inc.  
The Broyhill Co.  
Deere & Co.  
Engineering Products Co.  
Finn Equipment Co.  
Ford Motor Co., Tractor Div.  
Fuerst Brothers, Inc.  
International Harvester Co.  
Lely Corporation  
Towner Mfg. Co.  
Vicon Farm Mach. Co.  
Wheel-Horse Products, Inc.

### HEARING PROTECTORS

American Optical Corp.  
Safeline Products

### HEATERS

Century Engineering Corp.

### HOISTS

Adventure Line Mfg.  
Blue Bird International, Inc.  
Dico Co., Inc.  
Energy Mfg. Co.  
Hoffco, Inc.  
Ideal Crane Div., Bert Parkhurst  
Lakes Supply Co., Inc.  
Fred A. Lewis Company

### HOSE

Aeroquip Corporation  
American Hose & Reel Co.  
Asplundh Tree Expert Co.  
Black & Decker  
Brighton By-Products  
The Broyhill Co.  
Century Engineering Corp.  
Contree Sales, Inc.  
Friend Manufacturing Corp.  
Hydro-Turf  
Larson Machine, Inc.  
F. E. Myers & Bro. Co.  
Robco, Inc.  
Swan Hose Div., Amerace Corp.

### HOSE, SPRAY, IRRIGATION

Aeroquip Corporation  
American Hose & Reel Co.  
Hydro-Turf  
Public Health Equip. & Supply Co.  
Robco, Inc.  
Swan Hose Div., Amerace Corp.

### HYDRAULIC & AIR POWERED TOOLS

Fairmont Hydraulics  
Stanley Hydraulic Tools Div., The Stanley Works

### HYDRAULIC LIFTS

G & H Products, Inc.  
Howard Rotavator Co., Inc.  
Magline, Inc.  
Pitman Mfg. Co.  
Selma Trailer and Mfg. Co.

### HYDRAULIC SEEDING & MULCHING MACHINES

Bowie Industries, Inc.  
Finn Equipment Co.  
Hydro Turf  
Reinco, Inc.  
Spray Baby, Inc.  
The Toro Company

### INCINERATORS

DriAll, Inc.

**rated #1  
for overall  
performance**



**.. MAN  
MADE**

**Adelphi**  
KENTUCKY BLUEGRASS  
(U.S. Plant Patent No. 3150)

**NOW SETS U.S.  
GOVERNMENT\*  
STANDARDS  
FOR THE DARK  
GREEN COLOR OF  
ALL FUTURE  
BLUEGRASSES!**

\*Source: Plant Variety Protection Office,  
U.S. Dept. of Agriculture

In 10 years of man-controlled parentage breeding and over 7 years of university and field testing, "Adelphi" has earned a top rating for overall performance.

"Adelphi" offers the features most wanted in turf. Professionals and home gardeners, alike, are making it the most widely accepted and universally acclaimed bluegrass in 30 years.

For good looks throughout the entire growing season... excellent density... good disease resistance and tolerance to moderately close mowing, it's... MAN-MADE "Adelphi"... A FIRST IN TURF!

For Details Contact:

**J & L ADIKES, Inc.**

Jamaica, N. Y. 11423

**JONATHAN GREEN & SONS**

Kearny, N. J. 07032

**NORTHRUP, KING & CO.**

Minneapolis, Minn. 55413

**VAUGHAN'S SEED CO.**

Bound Brook, N.J. 08805  
Downers Grove, Ill. 60515

For More Details Circle (113) on Reply Card

### INJECTION EQUIPMENT

Agresults, Inc.  
Rue R. Elston Co., Inc.  
Walsh Mfg. Co.

### INSECT KILLER

Vandermolen Corp.  
Village Blacksmith

### IRRIGATION, INJECTION EQUIPMENT

Agresults, Inc.  
Andrasko Engineering Co.  
Inject-O-Meter Mfg. Co., Inc.  
Smith Precision Products Co.

### IRRIGATION CONTROLLER/PROGRAMMERS

Aqua-Dial  
Buckner/Johns Manville  
Griswold Controls  
Hays Mfg. Div., Zurn Industries  
Imperial Underground Sprinkler  
Lumenite Electronic Co.  
Melnor, Turf Irrigation Div.  
Moody Sprinkler Co., Inc.  
L. R. Nelson Mfg. Co., Inc.  
RainBird Sprinkler Mfg. Corp.  
Rain-O-Mat Sprinklers, Inc.  
Tork Time Controls, Inc.  
The Toro Company  
Toro Irrigation Div.  
Weather-Matic Div., Telsco  
Industries  
Wet Mfg. Co.

### IRRIGATION, COMPONENTS

Aqua-Mech  
Buckner/Johns Manville  
Champion Brass Mfg.  
Greenlawn Sprinkler Co.  
Griswold Controls  
Hays Mfg., Div. Zurn Industries  
King Bros. Industries  
Lumenite Electric Co.  
Melnor, Turf Irrigation Div.  
Moody Sprinkler Co., Inc.  
L. R. Nelson Mfg. Co., Inc.  
RainBird Sprinkler Mfg. Corp.  
Rain Jet Corporation  
Toro Irrigation Div.  
Weather-matic Div., Telsco  
Industries  
Wet Mfg. Co., Inc.

### IRRIGATION FITTINGS (See Pipe Fittings)

### IRRIGATION, PIPE PULLER

Greenlawn Sprinkler Co.  
Jacobsen Manufacturing Co.

### IRRIGATION PIPE, RISERS

Alcoa Aluminum  
Amoco Chemicals Corp.  
Buckner/Johns Manville  
Cast Iron Pipe Res. Assoc.  
Certain-Teed/Daymond Co.  
Certain-Teed Products Corp.  
Cresline Plastic Pipe Co., Inc.  
Flintkote Co., The Pipe Products  
Div.  
Greenlawn Sprinkler Co.  
King Bros. Industries  
Melnor, Turf Irrigation Div.  
RainBird Sprinkler Mfg. Corp.  
Rain Jet Corporation  
Ridge Plastics Co.  
Sprinkler Irrigation Supply Co.  
Toro Irrigation Division

### IRRIGATION, PUMPING STATIONS, COMPLETE

Irrigation Supply Co., Inc.  
Venable Sprinkler Sales, Inc.

### IRRIGATION SPRINKLERS, ABOVE GROUND

Aqua-Dial  
Boss Irrigation  
Champion Brass Mfg.  
Greenlawn Sprinkler Co.  
Hydro-Turf  
F. D. Kees Mfg. Co.  
Melnor, Turf Irrigation Div.  
L. R. Nelson Corporation  
Travelrain Power Sprinkler Co.  
Weather-matic Div., Telsco Ind.

### IRRIGATION SPRINKLERS, IMPACT

Buckner/Johns Manville  
Hays Mfg. Div., Zurn Industries, Inc.  
Moody Sprinkler Co., Inc.  
RainBird Sprinkler Mfg. Corp.  
Rain-O-Mat Sprinklers, Inc.  
Safe-T-Lawn, Inc.  
Sprinkler Irrigation Supply Co.  
Toro Irrigation Division  
Weather-matic Div., Telsco Ind.

### IRRIGATION SPRINKLERS, IMPULSE, POP-UP, HEADS

Aqua-Dial  
Buckner/Johns Manville  
Champion Brass Mfg.  
Melnor, Turf Irrigation Div.  
Moody Sprinkler Co., Inc.  
L. R. Nelson Corporation  
RainBird Sprinkler Mfg. Corp.  
Rain Jet Corporation  
Safe-T-Lawn, Inc.  
Sprinkler Irrigation Supply Co.  
Thompson Manufacturing  
Toro Irrigation Division  
Weather-matic Div., Telsco Ind.  
Wet Mfg. Co., Inc.

### IRRIGATION SPRINKLERS, SHRUB AND BUBBLER

Buckner/Johns Manville  
Champion Brass Mfg.  
Melnor, Turf Irrigation Div.  
Moody Sprinkler Co., Inc.  
L. R. Nelson Mfg. Co., Inc.  
Perma-Rain Irrigation, Inc.  
Rain Bird Sprinkler Mfg. Corp.  
Rain-O-Mat Sprinklers, Inc.  
Sprinkler Irrigation Supply Co.  
Toro Irrigation Division  
Weather-matic Div., Telsco Ind.  
Wet Mfg. Co., Inc.

### IRRIGATION SPRINKLERS, SPRAY, POP-UP, HEADS

Aqua-Dial  
Buckner/Johns Manville  
Champion Brass Mfg.  
Hays Mfg. Div., Zurn Industries, Inc.  
Imperial Underground Sprinkler  
Melnor, Turf Irrigation Div.  
Moody Sprinkler Co., Inc.  
L. R. Nelson Corporation  
RainBird Sprinkler Mfg. Corp.  
Rain Jet Corporation  
Safe-T-Lawn, Inc.  
Sprinkler Irrigation Supply Co.  
Thompson Manufacturing  
Toro Irrigation Division  
Weather-matic Div., Telsco Ind.  
Wet Mfg. Co., Inc.

### IRRIGATION SPRINKLERS ROTARY, POP-UP, HEADS

Aqua-Dial  
Buckner/Johns Manville  
Melnor, Turf Irrigation Div.  
Moody Sprinkler Co., Inc.  
L. R. Nelson Corporation  
RainBird Sprinkler Mfg. Corp.  
Rain Jet Corporation  
Rain-O-Mat Sprinklers, Inc.  
Safe-T-Lawn, Inc.  
Sprinkler Irrigation Supply Co.  
Thompson Manufacturing  
Toro Irrigation Division  
Weather-matic Div., Telsco Ind.

### IRRIGATION SPRINKLERS, STATIONARY

Aqua-Dial  
Buckner/Johns Manville  
Champion Brass Mfg.  
Melnor, Turf Irrigation Div.  
Moody Sprinkler Co., Inc.  
RainBird Sprinkler Mfg. Corp.  
Rain Jet Corporation  
Rain-O-Mat Sprinklers, Inc.  
Sprinkler Irrigation Supply Co.  
Toro Irrigation Division  
Weather-matic Div., Telsco Ind.

### IRRIGATION SPRINKLERS, VALVE IN HEAD

Buckner/Johns Manville  
RainBird Sprinkler Mfg. Corp.  
Safe-T-Lawn, Inc.

### IRRIGATION SYSTEMS, COMPLETE

Buckner/Johns Manville  
Greenlawn Sprinkler Co.  
Moody Sprinkler Co., Inc.  
L. R. Nelson Mfg. Co., Inc.  
RainBird Sprinkler Mfg. Corp.  
Rain Jet Corporation  
Sprinkler Irrigation Supply Co.  
Toro Irrigation Division  
Weather-matic Div., Telsco Ind.  
Wet Mfg. Co., Inc.

### IRRIGATION, SWITCHES

Buckner/Johns Manville  
L. R. Nelson Mfg. Co., Inc.  
RainBird Sprinkler Mfg. Corp.

### IRRIGATION, SAND SEPARATORS

Laval Separator Corp.  
Moody Sprinkler Co., Inc.  
Perma-Rain Irrigation, Inc.  
Rain-O-Mat Sprinklers, Inc.

### IRRIGATION, MISCELLANEOUS ACCESSORIES

Buckner/Johns Manville  
Certain-Teed Products Corp.  
Champion Brass Mfg.  
Cresline Plastic Pipe Co., Inc.  
Greenlawn Sprinkler Co.  
Irrigation Supply Co., Inc.  
King Bros. Industries  
Melnor, Turf Irrigation Div.  
Moody Sprinkler Co., Inc.  
L. R. Nelson Mfg. Co., Inc.  
RainBird Sprinkler Mfg. Corp.  
Rain Jet Corporation  
Rain-O-Mat Sprinklers, Inc.  
Safe-T-Lawn, Inc.  
Thompson Manufacturing  
Toro Irrigation Division  
Weather-matic Div., Telsco Ind.

### IRRIGATION VALVES, AUTOMATIC

Aqua-Dial  
Buckner/Johns Manville

Champion Brass Mfg.  
Greenlawn Sprinkler Co.  
W. L. Hamilton Co.  
Hays Mfg. Div., Zurn Industries  
Melnor, Turf Irrigation Div.  
Moody Sprinkler Co., Inc.  
L. R. Nelson Mfg. Co., Inc.  
RainBird Sprinkler Mfg. Corp.  
Rain-O-Mat Sprinklers, Inc.  
Toro Irrigation Division  
Weather-matic Div., Telsco Ind.

**IRRIGATION VALVES, FLOW CONTROL**

Griswold Controls  
Moody Sprinkler Co., Inc.  
Toro Irrigation Division

**IRRIGATION VALVES, MANUAL**

Greenlawn Sprinkler Co.

**IRRIGATION VALVES,  
PRESSURE ACTIVATED**

Griswold Controls  
W. L. Hamilton Co.  
Moody Sprinkler Co., Inc.  
RainBird Sprinkler Mfg. Corp.  
Toro Irrigation Division

**IRRIGATION, QUICK  
COUPLING VALVES**

Buckner/Johns Manville  
Melnor, Turf Irrigation Div.  
Moody Sprinkler Co., Inc.  
L. R. Nelson Mfg. Co., Inc.  
RainBird Sprinkler Mfg. Corp.  
Rain-O-Mat Sprinklers, Inc.  
Sprinkler Irrigation Supply Co.  
Toro Irrigation Division  
Weather-matic Div., Telsco Ind.  
H. N. Webster Mfg.

**IRRIGATION VALVES, SOLENOID**

Griswold Controls  
Hays Mfg. Div., Zurn Industries, Inc.  
Melnor, Turf Irrigation Div.  
Moody Sprinkler Co., Inc.  
RainBird Sprinkler Mfg. Corp.  
Toro Irrigation Division

**KNIVES, INJECTOR**

Contree Sales, Inc.

**LANDSCAPING, STUDY COURSES**

Lifetime Career Schools

**LEAF BLOWERS**

Billy Goat Industries, Inc.  
Finn Equipment Co.  
Gravelly Corp., Div. Clarke-Gravelly Corp.  
Mid-State Metal Casters & Mfg. Co.  
F. E. Myers & Bro. Co.  
Papec Machine Co.  
Parker Sweeper Co.  
Solo Motors, Inc.  
The Vandermolen Co.

**LEVELERS**

(Also See Blades, Dozer Scrapers)

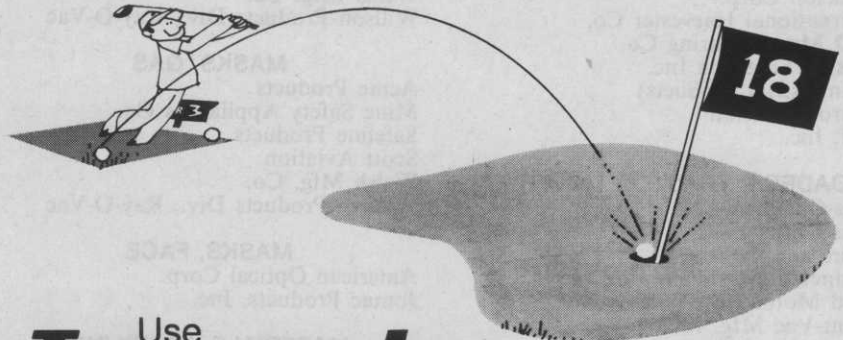
Arps Corporation  
Austin Products, Inc.  
Brillion Iron Works, Inc.  
Deere & Co.  
DriAll Drier's Inc.  
Eversman Mfg. Co.  
FMC Corp., Side-Winder  
International Harvester Co.

**LITTER RECEPTACLES**

Bemis Mfg. Co.  
Friend Mfg. Corp.

Control your fungi problems

**FROM TEE TO GREEN**



Use **Terrazole**<sup>®</sup>

To Fight Cottony Blight, Grease Spot, Damping-Off

Terrazole soil fungicide is your best weapon against Pythium fungi—the cause of grease spot, damping-off and cottony blight in your turf.

With a case of Terrazole in your storage shed, you're set to act fast at the first sign of these turf diseases. Terrazole goes to work quickly and provides effective control of the problems caused by both Pythium and Phytophthora. Repeating at 5 to 10-day intervals provides preventive control. Keep your best weapon against Pythium on hand. Keep your greens green, your golfers happy.

Use **Terraclor**<sup>®</sup>

To Control Brown Patch

Terraclor soil fungicide is the answer to Rhizoctonia control—the fungus that contributes to the formation of Brown Patch in Southern turf grasses.

Terraclor is easy to apply in liquid or dry granular form. Usually one application at the first sign of disease is all it takes.

Be sure you have Terraclor on hand. It's good assurance for healthy fairways and greens.

**Write for complete information.**

Mr. D. H. Sparks, Agricultural Division OLIN, **The rare bird in the business**  
P. O. Box 991, Little Rock, Arkansas 72203

Please send me more information on  
Terrazole/Terraclor for a healthy turf.



Name \_\_\_\_\_

Address \_\_\_\_\_

City \_\_\_\_\_

State \_\_\_\_\_ Zip \_\_\_\_\_

### LOADERS, BOOM

Century Engineering Corp.  
Deere & Co.  
Dico Co., Inc.  
Howard Rotavator Co., Inc.  
Pitman Mfg. Co.  
Waldon, Inc.

### LOADER, SKID STEER

Clark Equipment Co.  
Davis Mfg.  
Deere and Co.  
Erickson Corp.  
International Harvester Co.  
K-D Manufacturing Co.  
Massey Ferguson Inc.  
(Industrial Products)  
Melroe Division  
TCI, Inc.

### LOADERS, TRACTOR MOUNTED

Allis-Chalmers  
Arps Corp.  
Deere and Co.  
Engineering Products Co.  
Ford Motor Co., Tractor Div.  
Giant-Vac Mfg. Inc.  
International Harvester Co.  
Johnson Hydraulic Equip. Co.,  
Div. Arps Corp.  
Massey-Ferguson, Inc.  
Melroe Mfg. Co.  
Schwartz Mfg. Co.  
The Sun-Mastr Corp.  
Vermeer Manufacturing Co.

### LOG SPLITTERS

Lupton Tree Service  
Olathe Mfg., Inc.

Piqua Engineering, Inc.  
Vermeer Mfg. Co.

### MARKERS, LINE

Fox Valley Marking Systems

### MASKS, DUST

Acme Products  
American Optical Co.  
Friend Mfg. Corp.  
Martindale Electric Co.  
Mine Safety Appliances Co.  
Welsh Mfg. Co.  
Willson Products Div., Ray-O-Vac

### MASKS, GAS

Acme Products  
Mine Safety Appliances Co.  
Safeline Products  
Scott Aviation  
Welsh Mfg. Co.  
Willson Products Div., Ray-O-Vac

### MASKS, FACE

American Optical Corp.  
Jomac Products, Inc.

### MATERIALS, HANDLING

B.A.G. Corp.  
Bemis Mfg. Co.

### MEASURING WHEEL

Gandy Co.

### MISTBLOWERS, BACKPACK

Buffalo Turbine Ag. Equip. Co.  
Curtis Dyna Products Corporation  
Echo Chain Saw Div., Kioritz Corp.  
of America

Friends Mfg. Corp.  
H. D. Hudson Mfg. Co.  
Robco, Inc.  
Solo Motors, Inc.  
Stihl American, Inc.  
Tradewinds, Inc.  
Vandermolen Corp.

### MISTBLOWERS, ELECTRIC

Root-Lowell Corp.

### MISTBLOWERS, SELF-PROPELLED

Century Engineering Corp.  
Solo Motors, Inc.  
Tradewinds, Inc.

### MISTBLOWERS, TRUCK-MOUNTED

The Broyhill Co.  
Buffalo Turbine Ag. Equip. Co.  
FMC Corp., Ag. Machinery Div.  
Finn Equipment Co.  
F. E. Myers & Bro. Co.  
Solo Motors, Inc.  
Vandermolen Corp.

### MISTBLOWERS, NOZZLE PARTS

The Broyhill Co.  
Buffalo Turbine Equipment Co.  
Century Engineering Corp.  
Delevan Mfg. Co.  
Echo Chain Saw Div., Kioritz Corp.  
of America  
FMC Corp., Ag. Machinery Div.  
H. D. Hudson Mfg. Co.  
F. E. Myers & Bro. Co.  
Solo Motors, Inc.  
Spraying Systems Co.

### MOISTURE METERS

AgTronics Mfg. Co.  
Howard S. Crane, Inc.  
Harbor Industries, Inc.  
Irrrometer Company  
JLM Products & Design  
Soilmoisture Equipment Corp.  
Turf Service Laboratory, Inc.

### MOWERS, FLAIL

BMB Company  
Brillion Iron Works, Inc.  
E. L. Caldwell & Sons, Inc.  
Deere and Co.  
Excel Industries, Inc.  
FMC Corp., Ag. Machinery Div.  
FMC Side-Winder  
Ford Motor Co., Tractor Div.  
Friend Mfg. Corp.  
Gravely Corp., Div. Clarke-Gravely  
Corp.  
International Harvester Co.  
Kinco Mfg.  
Lakes Supply Co., Inc.  
Massey-Ferguson, Inc.  
Mathews Company  
Mott Corporation  
Slope Tractor, Inc.  
Sun-Master, Corp.  
Terrain King Corp.

### MOWERS, GREENS

Cooper Mfg. Co.  
Hahn, Inc.  
Jacobsen Mfg. Co.  
National Mower Co.  
The Toro Company

### MOWERS, REEL

Bunton Company  
Cooper Mfg. Co.  
Engineering Products Co.  
Friend Mfg. Corp.  
Hahn, Inc.

## 360 Degrees of Quality

Covering your entire irrigation needs.

### Systems:

White Turf designs maximum performance irrigation systems featuring durability and low maintenance.

### Installation:

Special techniques and equipment enable White Turf to install your system with a minimum of turf damage.

### Distribution:

Efficient handling methods of quality equipment provides you with the best irrigation service available.



## White Turf Engineering

5 SUMMER DRIVE, WINCHENDON, MASSACHUSETTS 01475 PHONE 617-297-0941

Jacobsen Mfg. Co.  
Locke Mfg. Div. Stellar Lawn Care  
McDonough Power Equipment, Inc.  
National Mower Co.  
Roseman Mower Corp.  
Simplicity Mfg. Co.  
The Sun-Master Corp.  
The Toro Company  
Year-A-Round Cab Corp., Jari Div.

#### MOWERS, ROTARY

AMF Western Tool Division  
Allis-Chalmers  
Ariens Company  
Austin Products, Inc.  
Avco Ezee Flow Div.  
BMB Company  
The Black & Decker Mfg. Co.  
Brillion Iron Works, Inc.  
Bachtold Bros.  
Bunton Co.  
E. L. Caldwell & Sons, Inc.  
J. I. Case Co., Outdoor Power  
Equip. Div.  
Conaway, Inc.  
Deere and Co.  
Economy Tractor  
Engineering Products Co.  
Excel Industries, Inc.  
FMC Corp., Ag. Machinery Div.  
FMC Corp., Outdoor Power Equip.  
Division  
FMC Corp., Side-Winder  
Flymo Division, Keltec, Inc.  
Ford Motor Co., Tractor Div.  
Friend Mfg. Corp.  
Goodall Div.  
Gravelly Corp., Div. Clarke-Gravelly  
Hesston Corporation, Ind. Div.  
Hydro Turf  
International Harvester Co.  
Jacobsen Mfg. Co.  
Lawn-Boy, OMC-Lincoln  
Lehara Equipment Co., Inc.  
Locke Mfg. Div. Stellar Lawn Care  
MTD Products, Inc.  
Massey-Ferguson, Inc.  
McDonough Power Equipment, Inc.  
Roof Mfg.  
Ryan, OMC-Lincoln  
M. J. Scott Co.  
Simplicity Mfg. Co.  
Slope Tractor, Inc.  
Solo Motors, Inc.  
Speedex Tractor Co.  
The Sun-Master Corp.  
Terrain King Corp.  
The Toro Company  
Triumph Machinery Co.  
Vicon Farm Machinery, Inc.  
Wheel-Horse Products  
Wisconsin Marine, Inc.  
Wood Brothers, Inc.  
Yazoo Mfg. Co.  
Year-A-Round Cab Corp., Jari Div.

#### MOWERS, SICKLE BAR

Allis-Chalmers  
BMB Co., Inc.  
Deere and Co.  
Ford Tractor Operations, North  
America  
Friend Mfg. Corp.  
International Harvester Co.  
Jacobsen Mfg. Co.  
Kinco Mfg.  
Massey-Ferguson, Inc.  
Simplicity Mfg. Co.  
Slope Tractor, Inc.  
Solo Motors, Inc.  
Thomas Equipment Ltd.  
Triumph Machinery Co.

Wheel Horse Products  
Year-A-Round Cab Corp. (Jari Div.)

#### MOWERS, VERTICAL (Also See Thatcher)

Artic Mizer Manufacturers, Inc.  
BlueBird International, Inc.  
Deere and Co.  
E-Z Rake, Inc.  
Giant-Vac Mfg., Inc.  
Hahn, Inc.  
International Harvester Co.  
Jacobsen Mfg. Co.  
F. D. Kees Mfg. Co.  
Kinco Mfg.  
Parker Sweeper Co.  
Ryan, OMC-Lincoln  
Terrain King Corp.  
Triumph Machinery Co.

#### MOWERS, REPLACEMENT PARTS

Allis-Chalmers  
Ariens Company  
Austin Products, Inc.  
Deere and Co.  
FMC Corp., Side-Winder  
Flymo Div., Keltec Inc.  
Ford Motor Co., Tractor Div.  
Goodall Div.  
Hesston Corp.  
International Harvester Co.  
Jacobsen Mfg. Co.  
Lakeshore Equipment & Supply Co.  
Locke Mfg. Co., Inc.  
Massey-Ferguson  
Roof Manufacturing Co.  
Ryan, OMC-Lincoln  
Slope Tractor, Inc.  
The Sun-Master Corp.  
Terrain King Corp.  
The Toro Company  
Wheel Horse Products  
Wood Brothers, Inc.  
Yazoo Mfg. Co., Inc.  
Year-A-Round Cab Corp. (Jari Div.)

#### MULCH BLOWERS

Bowie Industries, Inc.  
Finn Equipment Co.  
Reinco

#### NOZZLES (See Spray Nozzles)

#### OIL STORAGE

Contree Sales, Inc.

#### PAINT, MARKING

Fox Valley Marking Systems

#### PARK EQUIPMENT

Game Time, Inc.

#### PIPE

#### (See Irrigation Pipe)

Alcoa Aluminum Co. of America  
Amoco Chemicals Corp.  
Cast Iron Pipe Res. Assoc.  
Cresline Plastic Pipe Co., Inc.  
The Flintkote Co., Pipe  
Products Div.  
Hydro-Turf  
Ridge Plastics Co.

#### PIPE FITTINGS

Amoco Chemicals Corp.  
Certain-Teed Products Corp.  
Cresline Plastic Pipe Co., Inc.  
Melnor Ind., Turf Div.  
L. R. Nelson Corp.  
Plastiline, Inc.  
R & G Sloane Mfg. Co.

**PLAYGROUND EQUIPMENT**  
Game Time, Inc.

**PLOWS, VIBRATORY**  
Charles Machine Works, Inc.  
Jacobsen Manufacturing Co.  
Vermeer Mfg. Co.

**POST HOLE DIGGER**  
Austin Products, Inc.  
Hoffco, Inc.  
Fred A. Lewis Company  
Solo Motors, Inc.  
Stone Construction Equip., Inc.  
Village Blacksmith  
Vogel Tool & Die Corp.

**PROPORTIONING SYSTEMS**  
Contree Sales, Inc.  
Vineland Laboratories, Inc.

**PROTECTIVE CLOTHING**  
American Optical Co.  
Friend Mfg. Corp.  
Jomac Products, Inc.  
Mine Safety Appliances Co.

**PRUNERS**  
American Arborist Supplies  
Asplundh Chipper Co.  
Bartlett Mfg. Co.  
Corona Clipper Co.  
Fairmont Hydraulics  
Fanno Saw Works  
Friend Mfg. Co.  
Jameson Corporation  
Karl Kuemmerling, Inc.  
Limb-Lopper Co., Inc.  
Pitman Mfg. Co.  
H. K. Porter, Inc.  
Rowco Mfg. Co., Inc.  
Safety Test & Equipment Co.  
Seymour Smith & Son, Inc.  
Stanley Hydraulic Tools, Div.  
The Stanley Works  
Stihl American, Inc.  
Village Blacksmith



**Agway bags it!**

**NITROFORM\***  
organic nitrogen



The long-lasting, slow-release organic nitrogen that keeps feeding turf for months. Try it.

**Turf and Horticultural Products, Synthetics Dept.**  
Wilmington, Delaware 19899

\* Registered trademark of Hercules Incorporated. STH74-2

For More Details Circle (140) on Reply Card.



## PUMPS

(Also See Sprayers, Complete Power Unit)

Ace Pump Corp.  
Aurora Pump  
Berkley Pump Company  
John Blue Co.  
Bowie Industries, Inc.  
The Broyhill Co.  
Century Engineering Corp.  
Contree Sales, Inc.  
Delavan Manufacturing Corp.  
Energy Mfg. Co.  
FMC Corp., Ag. Machinery Div.  
Friend Manufacturing Corp.  
H. D. Hudson Mfg. Co.  
Hydraulic Products Co., Inc.  
Hydro Turf  
Hypro, Inc.  
ITT Marlow  
Larson Machine, Inc.  
F. E. Myers & Bro. Co.  
Oberdorfer Pump Div.  
Robco, Inc.  
Root-Lowell Corp.  
Solo Motors, Inc.  
Universal Motor Co.  
Venable Sprinkler Sales, Inc.  
Viking Pump Company

## PUMPS, CENTRIFUGAL

Ace Pump Corp.  
Aurora Pump  
Berkley Pump Company  
L. L. Larson Machine, Inc.  
Oberdorfer Foundries Inc.,  
Agri. Pump Div.  
Universal Motor Div., Medalist Ind.

## PUMPS, DIAPHRAGM

Ace Pump Corp.

## PUMPS, PISTON

L. L. Larson Machine, Inc.  
Robco, Inc.

## PUMPS, ROLLER

L. L. Larson Machine, Inc.

## PUMPS, SUBMERSIBLE

Hydraulic Products Co., Inc.  
ITT Marlow  
Stanley Hydraulic Tools, Div.  
The Stanley Works

## PUMPS, TURBINE

Aurora Pump  
Hydraulic Products Co., Inc.

## RAKES, LANDSCAPING

Arps Corporation  
Austin Products, Inc.  
Brillion Iron Works, Inc.  
Deere and Co.  
E-Z Rake, Inc.  
Ford Motor Co.  
International Harvester Co.  
Roseman Mower Corporation  
Triumph Machinery Co.  
York Modern Corp.

## RAKES, ALL PURPOSE

Arps Corp.  
Asplundh Chipper Co.  
Austin Products, Inc.  
Bartlett Mfg. Co.  
BlueBird International, Inc.  
Brillion Iron Works, Inc.  
Coursigns, Inc.  
Deere and Co.  
Ford Motor Co., Tractor Div.  
International Harvester Co.  
F. D. Kees Mfg. Co.  
Lely Corp.  
Roseman Mower Co.  
Ryan, OMC-Lincoln  
Skaggs Turf Equipment Co.  
Smithco, Inc.  
The Toro Company  
Vicon Farm Machinery, Inc.  
Year-A-Round Cab Corp., Jari Div.  
York Modern Corp.

## REELS, HOSE

American Hose & Reel Co.  
FMC Corp., Ag. Machinery Div.  
Friend Mfg. Corp.  
Clifford B. Hannay & Son, Inc.  
H. D. Hudson Mfg. Co.  
F. E. Myers & Bro. Co.

## RESPIRATORS

Acme Products  
American Optical Co.  
Friend Mfg. Co.  
Glendale Optical Co., Inc.  
Martindale Electric Co.  
Mine Safety Appliances Co.  
Safeline Products  
Scott Aviation  
The Vandermolen Co.  
Welsh Mfg. Co.  
Willson Products Div., Ray-O-Vac

## ROCK PICKERS

(Also See Stone Pickers)

Armor Metal Products  
William Bergman Company  
Bridgeport Imple. Works, Inc.

## ROLLERS, TURF

Brillion Iron Works, Inc.  
Erie Go Mfg., Inc.  
Ford Motor Co., Tractor Div.  
Hadfield Sod Roller Co.  
International Harvester Co.  
Lakes Supply Co., Inc.  
Rosco Manufacturing Co.  
Ryan, OMC-Lincoln  
Simplicity Mfg. Co.  
Wheel-Horse Products

## ROOT-FEEDING RODS

Ross Daniels, Inc.  
H. D. Hudson Mfg. Co.  
Hydroponic Chemical Co., Inc.

## ROOT PRUNERS

Schutt's Equipment Co.

## SAFETY BELTS AND SADDLES, TREE CLIMBERS

American Arborist Supplies  
Asplundh Chipper Co.  
Bartlett Mfg. Co.  
Karl Kuemmerling, Inc.  
Mine Safety Appliances Co.  
Product Development International

## SAFETY EQUIPMENT

American Optical Co.  
Asplundh Chipper Co.  
Bartlett Mfg. Co.  
FMC Corp., Ag. Machinery Div.  
Friend Mfg. Corp.  
General Scientific Equip. Co.  
Glendale Optical Co.  
Jomac Products, Inc.  
Karl Kuemmerling, Inc.  
Martindale Electric Co.  
Mine Safety Appliances Co.  
Product Development International  
Safeline Products  
Scott Aviation  
The Vandermolen Co.  
Welsh Mfg. Co.  
Willson Products Div., Ray-O-Vac

## SAWS, MANUAL

Bartlett Mfg. Co.  
Corona Clipper Co.  
The Fanno Saw Works  
Friend Mfg. Corp.  
Karl Kuemmerling, Inc.  
Seymour Smith & Son, Inc.

## SAWS, CHAIN, ELECTRIC

Beard-Poulan Div., Emerson  
Electric Co.  
Campbell-Hausfeld Co.  
Conaway, Inc.  
DESA Industries, Inc.  
Stihl American, Inc.  
Village Blacksmith

## SAWS, CHAIN, GASOLINE

Allis-Chalmers Corp., Outdoor and  
Leisure Products  
Beard-Poulan Div., Emerson  
Electric Co.  
Campbell-Hausfeld Co.  
Conaway, Inc.  
Deere & Co.  
DESA Industries, Inc.  
Echo Chain Saw Div., Kioritz Corp.  
of America  
Ford Tractor Operations,  
North America  
Friend Mfg. Corp.  
Hoffco, Inc.  
Homelite  
Husqvarna, Inc.  
Jobu Chain Saws  
Landcaster Pump & Mfg. Co., Inc.  
Lombard Power Equipment  
McCulloch Corp.  
Omark Industries, Inc., Oregon  
Saw Chain Div.  
Partner Industries of America  
Pioneer, OMC-Lincoln  
Quadra Mfg. Ltd.  
Roper Corporation  
Skil Corporation  
Solo Motors, Inc.



Lakeshore bags it!

**NITROFORM\***  
organic nitrogen



The slow-release nitrogen that helps turf keep its good looks without repeated fertilizing. Use it to save labor.

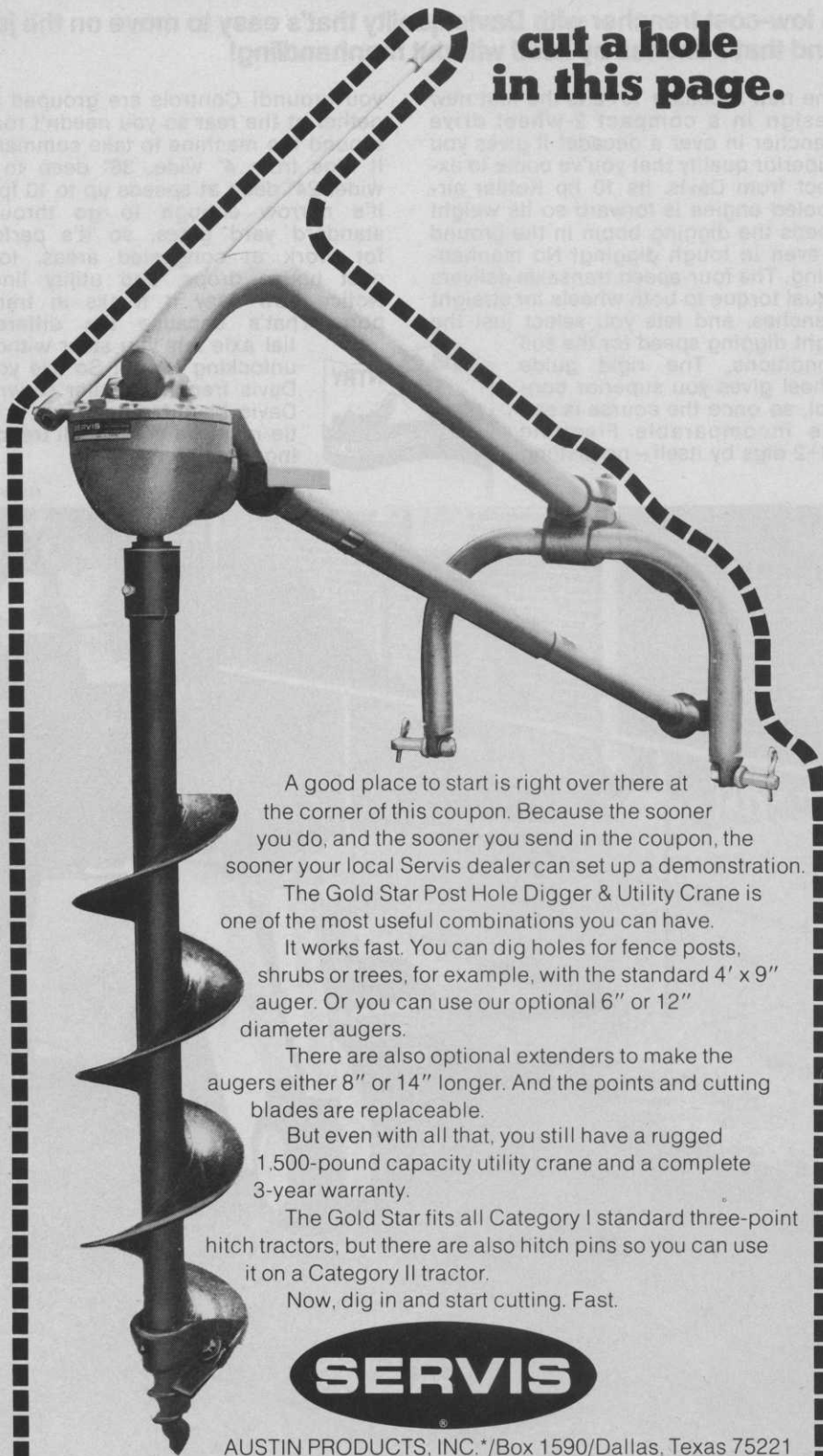
Turf and Horticultural Products, Synthetics Dept.  
Wilmington, Delaware 19899

Registered trademark of Hercules Incorporated. STH74-9

For More Details Circle (141) on Reply Card.

**To find out how good  
our Gold Star Digger really is,**

**cut a hole  
in this page.**



A good place to start is right over there at the corner of this coupon. Because the sooner you do, and the sooner you send in the coupon, the sooner your local Servis dealer can set up a demonstration.

The Gold Star Post Hole Digger & Utility Crane is one of the most useful combinations you can have.

It works fast. You can dig holes for fence posts, shrubs or trees, for example, with the standard 4' x 9" auger. Or you can use our optional 6" or 12" diameter augers.

There are also optional extenders to make the augers either 8" or 14" longer. And the points and cutting blades are replaceable.

But even with all that, you still have a rugged 1,500-pound capacity utility crane and a complete 3-year warranty.

The Gold Star fits all Category I standard three-point hitch tractors, but there are also hitch pins so you can use it on a Category II tractor.

Now, dig in and start cutting. Fast.



AUSTIN PRODUCTS, INC.\*/Box 1590/Dallas, Texas 75221

Name \_\_\_\_\_ Student? \_\_\_\_\_  
 Address \_\_\_\_\_  
 City \_\_\_\_\_ State \_\_\_\_\_ Zip \_\_\_\_\_

\*Formerly Servis Equipment Company

WT-9

Stihl American, Inc.  
Waco Industries, Inc.

**SAWS, CHAIN, HYDRAULIC**  
Fairmont Hydraulics  
Friend Mfg. Corp.  
Limb Lopper Co., Inc.  
Stanley Hydraulic Tools, Div. The Stanley Works

**SAWS, CHAIN, PNEUMATIC**  
DESA Industries, Inc.  
Limb-Lopper Co., Inc.

**SAWS, CIRCULAR, GASOLINE**  
Skil Corporation  
Stihl American, Inc.

**SAWS, CIRCULAR, HYDRAULIC**  
Fairmont Hydraulics  
Limb Lopper Co., Inc.  
Stanley Hydraulic Tools, Div. The Stanley Works

**SAWS, CIRCULAR, PNEUMATIC**  
Limb Lopper Co., Inc.  
Stanley Hydraulic Tools, Div. The Stanley Works

**SAWS, CIRCULAR, ELECTRIC**  
Allis-Chalmers Corp., Outdoor and Leisure Products  
The Black & Decker Mfg. Co.  
Friend Mfg. Corp.  
Skil Corporation

**SAWS, CHAIN, PARTS**  
Beaird-Poulan Div., Emerson Electric Co.  
Campbell-Hausfeld Co.  
Grandberg Industries  
McCulloch Corporation  
Omark Industries, Inc., Oregon Saw Chain Div.  
Pioneer, OMC-Lincoln  
Sabre Saw Chain  
Skil Corporation  
Stihl American, Inc.  
Waco Industries, Inc.

**SAWS, EARTH**  
Charles Machine Works, Inc.

**SCAFFOLDS**  
Up-Right Scaffolds

**SCABBARDS, SAW**  
Bartlett Mfg. Company  
Tallman Equip. Co., Inc.  
Veri Products

**SCRAPERS**  
Austin Products, Inc.  
BMB Company  
Deere & Co.  
Eversman Mfg. Co.  
International Harvester Co.  
Massey-Ferguson, Inc. (Industrial Products)

**SCREENERS, SOIL**  
Lindig Mfg. Corp.  
Royer Foundry & Machine Co.

**SCYTHES**  
Echo Chain Saw Div., Kioritz Corp. of America  
Hoffco, Inc.

**SEEDERS, BELT TYPE**  
FMC Corp., Ag. Machinery Div.

### SEEDERS, DISC-TYPE

Brillion Iron Works, Inc.  
International Harvester Co.  
The Toro Company  
Vandermolen Export Co.

### SEEDERS, HOPPER-TYPE

Avco Ezee Flow Div.  
Brillion Iron Works, Inc.  
Cyclone Seeder Co., Inc.  
Deere & Co.  
Engineering Product Co.  
Gandy Co.  
Herd Seeder Co., Inc.  
Hydro-Turf  
International Harvester Co.  
Jacobsen Mfg. Co.  
Lakes Supply Co., Inc.  
L. L. Larson Machine, Inc.  
Lawn Medic, Inc.  
Lely Corporation  
Parker Sweeper Co.  
Vandermolen Corp.

### SEEDERS, HYDRAULIC

Bowie Industries  
Finn Equipment Co.  
Hydro Turf  
Reinco, Inc.  
Spray Baby  
The Toro Company

### SEEDERS, MOUNTED

Garber Seeders, Inc.

### SEEDERS, PULL-TYPE

Garber Seeders, Inc.

### SEEDERS, SOD

Brillion Iron Works, Inc.  
Cyclone Seeder Co., Inc.

### SHARPENER, CHAIN SAW

Foley Mfg. Co.  
Granberg Industries

### SHARPENER, MOWERS & CUTTERS

Foley Mfg. Co.  
Travelrain Power Sprinkler Co.

### SHEARS

Bartlett Mfg. Co.  
Black & Decker  
Corona Clipper Co.  
Friend Mfg. Co.  
Melnor Industries, Inc.  
H. K. Porter, Inc.

Seymour Smith & Son, Inc.  
Tallman Equipment Co., Inc.

### SHREDDERS (Also See Chippers)

Billy Goat  
E. L. Caldwell & Sons, Inc.  
Deere & Co.  
Engineering Products Co.  
FMC Corp., Outdoor Power  
Equip. Div.  
Ford Motor Co., Tractor Div.  
F. D. Kees Mfg. Co.  
Kemp Shredder Co.  
Lindig Mfg. Co.  
MTD Products, Inc.  
Roto-Hoe Co.  
Royer Foundry & Machine Co.  
W-W Grinder

### SNOW THROWER

Allis-Chalmers Corp., Outdoor and  
Leisure Products  
J. I. Case Co., Outdoor Power  
Equip. Div.  
Deere & Co.  
FMC Corp., Outdoor Power  
Equip. Div.  
Ferrari Tractors  
Gravely Corp., Div. Clarke-Gravely  
Hesston Corporation  
International Harvester Co.,  
Consumer Products  
Jacobsen Mfg. Co.  
Lakes Supply Co., Inc.  
Massey-Ferguson, Inc.  
Maxey Mfg. Co., Inc.  
Solo Motors, Inc.  
The Toro Company  
Wheel-Horse Products  
Wisconsin Marine, Inc.  
Yardman, The Leisure Group, Inc.

### SOD CUTTERS

Beck Mfg. Co.  
Big Brute Turf Cut  
Bowie Industries, Inc.  
Brouwer Turf Equipment, Ltd.  
Jacobsen Mfg. Co.  
Princeton Mfg. Co.  
Ryan, OMC-Lincoln

### SOD HARVESTERS

Beck Mfg. Company  
Brouwer Turf Equipment Ltd.  
Nunes Mfg.  
Princeton Mfg. Co.

### SOIL TESTERS

Contree Sales, Inc.  
Howard S. Crane, Inc.  
Harbor Industries, Inc.  
Hydroponic Chemical Co., Inc.  
Soilmoisture Equipment Corp.  
Sudbury Laboratory, Inc.

### SPADE, TREE (Also See Tree Movers)

CareTree Systems  
Vermeer Mfg. Co.

### SPIKERS

Hahn, Inc.  
Jacobsen Mfg. Co.  
Power Spike Mfg. Co.  
Ryan, OMC-Lincoln  
Smithco, Inc.

### SPRAY BOOMS

Amchem Products, Inc.  
The Broyhill Co.  
Century Engineering Corp.  
Contree Sales, Inc.  
Red Ewald, Inc.  
FMC Corp., Ag. Machinery Div.  
Friend Mfg. Corp.  
H. D. Hudson Mfg. Co.  
L. L. Larson Machine, Inc.  
F. E. Myers & Bro. Co.  
Papec Machine Co.  
Root-Lowell Corp.  
Walsh Manufacturing Co.

### SPRAY GUNS

Bar-Way Mfg. Co.  
The Broyhill Co.  
Century Engineering Corp.  
Contree Sales, Inc.  
Delavan Mfg. Co.  
FMC Corp., Ag. Machinery Div.  
Foamspray Chemicals, Inc.  
Friend Mfg. Corp.  
W. L. Hamilton Co.  
H. D. Hudson Mfg. Co.  
L. L. Larson Machine, Inc.  
Melnor Industries, Inc.  
F. E. Myers & Bro. Co.  
Root-Lowell Corp.  
Spraying Systems Co.  
Walsh Manufacturing Co.

### SPRAY NOZZLES, COMPLETE

Amchem Products, Inc.  
Bete Fog Nozzle, Inc.  
The Broyhill Co.

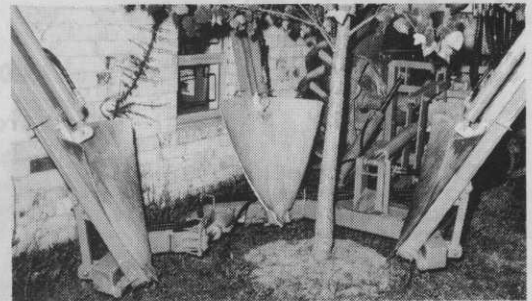
## NEW SHORT-FRAME

# CARETREE TRANSPLANTER

IMPROVED - MANEUVERABILITY



- ACCESS
- VISIBILITY
- BALANCE
- SPEED



FOR CLOSE-SPACED NURSERY  
AND LANDSCAPING OPERATIONS

## CARETREE SYSTEMS

BOX 347, WORTHINGTON, OHIO 43085

Tel. (614) 846-2665

Buffalo Turbine Equipment Co.  
 Century Engineering Corp.  
 Contree Sales, Inc.  
 Delavan Mfg. Co.  
 Foamspray Chemicals, Inc.  
 Friend Mfg. Corp.  
 W. L. Hamilton Co.  
 H. D. Hudson Mfg. Co.  
 L. L. Larson Machine, Inc.  
 Melnor Industries  
 F. E. Myers & Bro. Co.  
 Papec Machine Co.  
 Root-Lowell Corp.  
 Spraying Systems Co.  
 Walsh Mfg. Co.

**SPRAY NOZZLES, DISKS**

The Broyhill Co.  
 Century Engineering Corp.  
 Delavan Mfg. Co.  
 Friend Mfg. Corp.  
 L. L. Larson Machine, Inc.  
 F. E. Myers & Bro. Co.  
 Spraying Systems Co.  
 Vandermolen Co.  
 Walsh Mfg. Co.

**SPRAY NOZZLES, WHIRLS**

The Broyhill Co.  
 Century Engineering Corp.  
 Delavan Mfg. Co.  
 Friend Mfg. Corp.  
 L. L. Larson Machine, Inc.  
 F. E. Myers & Bro. Co.  
 Spraying Systems Co.  
 Walsh Mfg. Co.

**SPRAY-SLEEVE**

Becco Products Co.

**SPRAYER, BIFLUID**

The Broyhill Co.  
 Buffalo Turbine Equip. Co.  
 Red Ewald, Inc.  
 FMC Corp., Ag. Machinery Div.  
 Finn Equipment Co.  
 Friend Mfg. Corp.

**SPRAYERS, BOOM**

Amchem Products, Inc.  
 John Blue Co., Inc.  
 The Broyhill Co.  
 Century Engineering Corp.  
 Contree Sale, Inc.  
 Cushman, OMC-Lincoln  
 Deere & Co.  
 Red Ewald, Inc.  
 FMC Corp., Ag. Machinery Div.  
 Fimco, Inc.  
 Friend Mfg. Corp.  
 Hahn, Inc.  
 H. D. Hudson Mfg. Co.  
 International Harvester Co.  
 L. L. Larson Machine, Inc.  
 F. E. Myers & Bro. Co.  
 Papec Machine Co.  
 Root-Lowell Corp.  
 Walsh Mfg. Co.  
 Waymark

**SPRAYERS, CART OR WHEELBARROW TYPE**

Amchem Products, Inc.  
 The Broyhill Co.  
 Buffalo Turbine Ind. Equip. Co.  
 Century Engineering Corp.  
 Chapin, R. E., Mfg. Works, Inc.  
 Deere & Co.  
 Red Ewald, Inc.

FMC Corp., Ag. Machinery Div.  
 Fimco, Inc.  
 Friend Mfg. Co.  
 H. D. Hudson Mfg. Co.  
 L. L. Larson Machine, Inc.  
 F. E. Myers & Bro. Co.  
 Root-Lowell Corp.  
 Solo Motors, Inc.

**SPRAYERS, COMPLETE POWER UNIT (Also See Pumps)**

Joh ezlue Co., Inc.  
 Bowie Industries, Inc.  
 The Broyhill Co.  
 Buffalo Turbine Ag. Equip Co.  
 Century Engineering Corp.  
 R. E. Chapin Mfg. Works, Inc.  
 Contree Sales, Inc.  
 Cushman, OMC-Lincoln  
 Deere & Co.  
 Echo Chain Saw Div., Kioritz Corp. of America  
 Edwards Mfg. Co.  
 Red Ewald, Inc.  
 FMC Corp., Ag. Machinery Div.  
 Ferrari Tractors  
 Fimco, Inc.  
 Friend Mfg. Corp.  
 Hub States Corporation  
 H. D. Hudson Mfg. Co.  
 Hydro Turf  
 Hypro Div., Lear Siegler, Inc.  
 L. L. Larson Machine, Inc.  
 Lawn Medic, Inc.  
 Leigh Products, Inc.  
 Lockwood Corporation  
 London Fog Company  
 F. E. Myers & Bro. Co.  
 Parco Products Co.  
 Public Health Equip. & Supply Co.  
 Robco, Inc.  
 Root-Lowell Corporation  
 Smith & Co., Inc. D. B.  
 Smithco, Inc.  
 Solo Motors, Inc.  
 Spray Baby, Inc.  
 Tradewinds, Inc.  
 Tree Ject Company  
 The Vandermolen Co.  
 Walsh Mfg. Co.  
 Waymark  
 Wayne Engineering Corp.

**SPRAYERS, COMPRESSED AIR**

R. E. Chapin Mfg. Works, Inc.  
 Curtis-Dyna Products Corp.  
 Red Ewald, Inc.  
 H. D. Hudson Mfg. Co.  
 L. L. Larson Machine, Inc.  
 Parco Products Co.  
 Public Health Equip. & Supply Co.  
 Root-Lowell Corp.

**SPRAYERS, HAND**

Bartlett Mfg. Co.  
 Broyhill Co.  
 Buffalo Turbine Ag. Equip. Co.  
 Century Engineering  
 R. E. Chapin Mfg. Works, Inc.  
 Contree Sales, Inc.  
 Deere & Co.  
 Friend Mfg. Co.  
 H. D. Hudson Mfg. Co.  
 L. L. Larson Machine, Inc.  
 Leigh Products, Inc.  
 Melnor Industries, Inc.  
 Parco Products Co.  
 Root-Lowell Corp.  
 Solo Motors, Inc.  
 Tradewinds, Inc.  
 The Vandermolen Co.  
 Walsh Mfg. Co.

**IT'S A FACT...**

**OVER A MILLION EARTHWORMS CAN INHABIT AN ACRE OF SOIL... DARWIN ESTIMATED THAT IN ONE ACRE, UP TO 10 TONS OF SOIL PASSES THROUGH THE BODIES OF EARTHWORMS EACH YEAR.**



**MOST CULTIVATED LAND** in humid areas of the U.S. WILL ERODE AT AN AVERAGE OF 1 INCH OR MORE PER CENTURY.

**NOTHING CAN MATCH terra TACK**



**...AND THAT'S A FACT!** Terra Tack as a spray helps control soil erosion.

- **TERRA TACK HELPS PREVENT EROSION** WHEN USED AS AN OVERSPRAY BY HOLDING STRAW OR HAY IN PLACE.
- **TERRA TACK, IN A SLURRY OF SEED, FERTILIZER, AND FIBER, FORMS AN ADHESIVE TO HELP PREVENT EROSION.**
- **TERRA TACK'S COST?... AMAZINGLY LOW!**



WITH TERRA TACK      WITHOUT TERRA TACK

**Grass Growers**

Box 584, Plainfield, N. J. 07061 (201) 755-0921

### SPRAYERS, HOSE END

Amchem Products, Inc.  
Bar-Way Mfg. Company  
Broyhill Co.  
Century Engineering Corp.  
R. E. Chapin Mfg. Works, Inc.  
FMC Corp., Ag. Machinery Div.  
Friend Mfg. Co.  
Hub States Corporation  
H. D. Hudson Mfg. Co.  
L. L. Larson Machine, Inc.  
Leigh Products, Inc.  
Melnor Industries, Inc.  
F. E. Myers & Bro. Co.  
Tree Ject Company  
Walsh Mfg. Co.  
Wayne Engineering Corp.

### SPRAYERS, KNAPSACK

Bartlett Mfg. Co.  
Buffalo Turbine Ag. Equip. Co.  
R. E. Chapin Mfg. Works, Inc.  
Echo Chain Saw Div., Kioritz Corp.  
of America  
Friend Mfg. Co.  
H. D. Hudson Mfg. Co.  
Parco Products Co.  
Public Health Equip. & Supply Co.  
Robco, Inc.  
Root-Lowell Corp.  
Solo Motors, Inc.  
Stihl American, Inc.  
Tradewinds, Inc.  
Vandermolen Co.

### SPREADERS, DISC-TYPE

L. L. Larson Machine, Inc.  
The Vandermolen Co.  
Waymark

### SPREADERS, HOPPER-TYPE

Arctic Mizer  
Avco Ezee Flow Div.  
John Blue Co.  
Cushman, OMC-Lincoln  
Deere & Co.  
Ford Tractor Operations,  
North America  
Gandy Co.



**Regal Chemical bags it!**

**NITROFORM\***  
organic nitrogen



The nitrogen that pampers delicate turf. Feeds slowly instead of causing surges of growth that can cause stress.

Turf and Horticultural Products, Synthetics Dept.  
Wilmington, Delaware 19899

\*Registered trademark of Hercules Incorporated. STH74-22

For More Details Circle (142) on Reply Card

Great Lakes Chemical Div.  
Herd Seeder Co., Inc.  
Highway Equipment Co.  
International Harvester Co.  
F. D. Kees Mfg. Co.  
L. L. Larson Machine, Inc.  
Lely Corp.  
Ryan, OMC-Lincoln  
Simplex Mfg. Co.  
Swenson Spreader & MFG. Co.  
TCI, Inc.  
Vandermolen Corp.  
Vicon Farm Machinery, Inc.  
Willmar Mfg. Co.

### SPREADER, LIQUID

Amchem Products, Inc.  
TCI, Inc.

### SPRIGGERS

Beck Mfg. Co.  
Bermuda King Co.  
Bowie Machine Works

### SPRINKLERS (See Irrigation)

### STENCILS, MARKING

Fox Valley Marking Systems  
M-B Company

### STONE PICKER (Also See Rock Picker)

Armor Metal Products  
William Bergman Company  
Bridgeport Imple. Works, Inc.  
Lockwood Corp.

### STRAINERS

Hypro Division, Lear Siegler, Inc.

### STRAINERS, SUCTION

Bar-Way Mfg. Co.

### STUMP CUTTER/REMOVER

Arps Corp.  
FMC Corp., Sweeper Div.  
Hesston Corp., Lawn Equipment  
Div.  
International Harvester Co.  
Karl Kuemmerling, Inc.  
Levco Mfg., Inc.  
Olathe Mfg., Inc.  
Valley Products Corp.  
Vermeer Mfg. Co.

### SWEEPERS, LAWN (Also See Broom, Vacuum)

Billy Goat Industries, Inc.  
BlueBird International, Inc.  
Clark Div., Clarke-Gravely Corp.  
Deere & Co.  
FMC Corp., Sweeper Div.  
International Harvester Co.  
Jacobsen Mfg. Co.  
M-B Company  
Mars Industries, Inc.  
Mathews Company  
Melroe Mfg. Co.  
Mid-State Metal Casters & Mfg. Co.  
Nunes Mfg.  
Parker Sweeper Co.  
Ryan, OMC-Lincoln  
Sweepster, Jenkins Equip. Co.  
Tennant Maintenance Systems  
The Toro Company  
Turf Vac Corp.  
Wheel Horse Products, Inc.

### TAILGATES, LIFTING

Adventure Line Mfg. Co.  
S & H Industries, Inc.

### TANKS, SPRAY

John Blue Co.  
The Broyhill Co.  
Century Engineering Corp.  
Contree Sales  
Edwards Mfg. Co.  
Red Ewald, Inc.  
FMC Corp., Ag. Machinery Div.  
Fibre Glass Products  
Friend Mfg. Corp.  
Hemco Corporation  
H. D. Hudson Mfg. Co.  
Inject-O-Meter Mfg. Co.  
L. L. Larson Machine, Inc.  
Leigh Products, Inc.  
F. E. Myers & Bro. Co.  
Papec Machine Co.  
Raven Industries  
Root-Lowell Corporation  
Walsh Mfg. Co.

### THATCHERS (See Mowers, Vertical)

Arctic Mizer  
Arps Corporation  
BlueBird International, Inc.  
E-Z Rake, Inc.  
Giant-Vac Mfg., Inc.  
Johnson Hydraulic Equip.,  
Div. Arps Corp.  
F. D. Kees Mfg. Co.  
Parker Sweeper Company  
Ryan, OMC-Lincoln  
Swenson Spreader & Mfg. Co.  
Triumph Machinery Co.

### TILLERS

Allis-Chalmers  
Ariens Co.  
Auto Hoe, Inc.  
J. I. Case, Outdoor Power  
Equip. Div.  
Conaway, Inc.  
Contree Sales, Inc.  
Deere & Co.  
Engineering Products Co.  
FMC Corp., Ag. Machinery Div.  
FMC Corp., Outdoor Power  
Equip. Div.  
FMC Corp., Side-Winder  
Ferrari Tractors  
Ford Motor Co., Tractor Div.  
Gravely Corp., Div. Clarke-Gravely  
Howard Rotavator Co., Inc.  
International Harvester Co.  
Jacobsen Mfg. Co.  
Lakes Supply Co., Inc.  
Lely Corp.  
Massey-Ferguson, Inc.  
MTD Products, Inc.  
Roseman Mower Corp.  
Roto-Hoe Co.  
Simplicity Mfg. Co.  
Solo Industries, Inc.  
Village Blacksmith  
Wheel-Horse Products  
Yazoo Mfg. Co., Inc.

### TIRES

Dunlop Tire & Rubber Corp.

### TOOLS, HAND, HYDRAULIC, PNEUMATIC

Black & Decker Co.  
Deere & Co.  
Friend Mfg. Corp.  
F. D. Kees Mfg. Co.  
Limb Lopper Co., Inc.  
H. K. Porter, Inc.  
Seymour Smith & Son, Inc.  
Village Blacksmith

### TOOL BOXES, PICKUP (See Chests, Tool)

Hemco Corporation  
Knaack Mfg. Co.

#### TOP DRESSERS

Cushman, OMC-Lincoln  
Jabobsen Mfg. Co.  
Lely Corp.  
Ryan, OMC-Lincoln  
Smithco, Inc.

#### TRACTORS, 8-12 HP

AMF Western Tool Division  
Allis-Chalmers Corp.  
Ariens Company  
Avco New Idea  
J. I. Case, Outdoor Power  
Equip. Div.  
Deere & Co.  
FMC Corp., Outdoor Power  
Equip. Div.  
Ferrari Tractors  
Ford Tractor Operations, North  
America  
Gravely, Div. Clarke-Gravely  
International Harvester Co.  
Massey-Ferguson, Inc.  
Simplicity Mfg. Co.  
Smithco, Inc.  
Speedex Tractor Co.  
Wheel-Horse Products  
Yardman, The Leisure Group, Inc.

#### TRACTORS, 13-20 HP

Allis-Chalmers Corp., Outdoor and  
Leisure Products  
Avco New Idea  
John Blue Co.  
J. I. Case, Outdoor Power  
Equip. Div.  
Conaway, Inc.  
Deere & Co.  
Economy Tractor  
Engineering Products Co.  
FMC Corp., Outdoor Power  
Equip. Div.  
Ferrari Tractors  
Ford Tractor Operations, North  
America  
General Electric, Outdoor Power  
Equip. Operations  
Gravely, Div. Clarke-Gravely Corp.  
Hesston Corporation, Ind. Div.  
International Harvester Co.  
Kubota Tractors, Inc.  
Massey-Ferguson, Inc.  
Satoh Tractor c/o NEDA  
Simplicity Mfg. Co.  
Speedex Tractor Co.  
Tradewinds, Inc.  
Wheel-Horse Products  
Yardman, The Leisure Group, Inc.

#### TRACTORS, 21-60 HP

Allis-Chalmers  
Deere & Co.  
Ferrari Tractor  
Ford Tractor Operations, North  
America  
International Harvester Co.  
Kubota Tractors, Inc.  
Massey-Ferguson, Inc.  
J. Pickrell Co.  
Satoh Tractor c/o NEDA  
Slope Tractor, Inc.  
Tradewinds, Inc.  
Waldon, Inc.

#### TRACTORS, 61-150 HP

Allis-Chalmers  
Deere & Co.  
Ford Tractor Operations  
Massey-Ferguson, Inc.

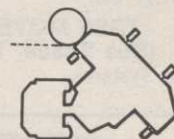


**Exclusive features  
put you up front — into a whole new era  
of grounds maintenance**

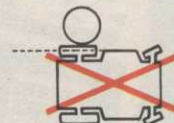
## Hesston Front Runner® GMT... really ahead of the times!

Made-over or make-do equipment just won't do the professional job of groundskeeping you want the year around. This one performs in all seasons: mowing grass...vacuuming lawns...clearing snow...moving earth. And it performs far more efficiently than a scaled-down farm tractor.

The Front Runner, built specifically for grounds maintenance, is a tough, gutsy tractor with front-wheel hydrostatic drive and hydraulically controlled front-mounted attachments. Its top features? Articulated steering and vacuum pickup. The center pivot lets you mow easily around trees and shrubs, along curving walks and drives — usually in a single pass. An integrated vacuum pickup attachment to mower heads is self contained — it deposits trimmings in the tractor's built-in carryall. If you do need to stop and back up, there's no bulky trailer in the way! Your speed is infinitely variable from 0 to 11 mph.



Hesston Front Runner with exclusive articulated steering bends in the middle for easy maneuverability around obstacles in close quarters.



Conventional solid frame garden tractor with belly-mounted mowers can't match the easy maneuverability and up-close cut of the Front Runner.

The Front Runner GMT is available in three models — 16, 18 and 19.8 hp. Choose from 48", 60" and giant 80" batwing mower heads. All attachments fit all models so you can get the capabilities and power most efficient for you. Send for color literature that includes specifications on all three models.

**HESSTON**  
CORPORATION

FR-174C

8640 Brookville Road  
Indianapolis, Indiana 46239

Lawn Equipment Division

Please send me more information on the Hesston Front Runner GMT and the name of my nearest dealer.

NAME \_\_\_\_\_

COMPANY \_\_\_\_\_

ADDRESS \_\_\_\_\_

TOWN/STATE \_\_\_\_\_

ZIP \_\_\_\_\_

Waldon, Inc.

**TRACTORS, 151 and up HP**  
Deere & Co.  
Ford Tractor Operations  
International Harvester Co.  
Massey-Ferguson, Inc.  
Waldon, Inc.

**TRACTORS, CRAWLERS**  
Allis-Chalmers  
Deere & Co.  
International Harvester Co.

**TRAILERS**  
Beatty Trailers  
John Blue Co.  
The Champion Co.  
Clark Equipment Trailer Div.  
Deere & Co.  
Fayette Division, Dayton-Walther Corp.  
Ginther Equipment Corp.  
Harvestall Industries, Inc.  
Jacobsen Mfg. Co.  
Lakeside Mfg. Corp.  
Lawn Medic, Inc.  
Magline, Inc.  
Maxey Mfg. Co., Inc.  
Miller Tilt-Top Trailers, Inc.  
R.A.M. Industries, Inc.  
Rogers Bros.  
E. R. Schwartz Mfg. Co.  
Selma Trailer and Mfg. Co.  
The Snow Company  
Wheel Horse Products, Inc.

**TRASH COMPACTORS**  
Piqua Engineering, Inc.

**TREE INJECTORS**  
Creative Sales  
Ferti-Feeder  
Tree-Ject Company  
Walsh Mfg. Co.

**TREE MOVERS**  
(See Spade, Tree)  
CareTree Systems



**Lawn King bags it!**

**NITROFORM\***  
organic nitrogen



The concentrated organic that takes up less storage space. Pathogen-free and odorless, too.

Turf and Horticultural Products, Synthetics Dept.  
Wilmington, Delaware 19899

\*Registered trademark of Hercules Incorporated. STH74-11

For More Details Circle (143) on Reply Card

Davey Tree Expert Co.  
Ideal Crane Div.  
Schutt's Equipment Co.  
Vermeer Mfg. Co.

**TREE WRAPPINGS**  
Bartlett Mfg. Co.  
Bemis Mfg. Co.  
American Excelsior Corp.

**TRENCHER**  
Arps Corp.  
Charles Machine Works  
Davis Mfg.  
Digz-All Trencher Co.  
Ground Hog, Inc.  
Moody Sprinkler Co., Inc.  
Toro Irrigation Division  
Towner Mfg. Co.  
Vermeer Mfg. Co.

**TRIMMERS, HEDGE AND GRASS, PARTS**  
Barlett Mfg. Co.  
The Black & Decker Mfg. Co.  
Bunton Co.  
Conaway, Inc.  
Gandy Company  
Goodall Div.  
Grandberg Industries  
Jacobsen Mfg. Co.  
K-D Mfg. Co.  
Melnor Industries, Inc.  
H. K. Porter, Inc.  
Rowco Mfg. Co., Inc.  
Seymour Smith & Son, Inc.  
Stihl American, Inc.  
Tallman Equip. Co., Inc.  
Village Blacksmith  
Wisconsin Marine, Inc.  
Yazoo Mfg. Co., Inc.

**TRUCK, ACCESSORIES**  
Maxey Mfg. Co., Inc.

**TRUCK, FORESTRY**  
Asplundh Chipper Co.  
Mobile Aerial Towers, Inc.

**TRUCK, LIGHT-HAULING, UTILITY**  
Cushman, OMC-Lincoln  
Ginther Equipment Corp.  
HMC  
Jacobsen Mfg. Co.  
Wayne Engineering Corp.

**TRUCK, UTILITY BODIES**  
Fibre Glass Products

**TUBING**  
(Also See Hose)  
American Hose & Reel Co.

**TURF VEHICLES**  
Club Car, Inc.  
Cushman, OMC-Lincoln  
E-Z Go Car, Div. Textron, Inc.  
G.E.M. Products, Inc.  
HMC  
Harley-Davidson Motor Co., Inc.  
Jacobsen Mfg. Co.  
Jeep Corporation  
Otis Elevator Co., Special Vehicle Div.  
Pargo, Inc.  
J. Pickrell Co.  
Ryan, OMC-Lincoln  
Smithco  
The Snow Company  
The Toro Company  
Westinghouse Electric Corp.

**UNDERWATER WEED HARVESTER**  
(See Aquatic Weed Harvester)  
A.O.A. Research & Development, Inc.

Air-Lec Industries, Inc.  
Aquamarine Corporation  
Mud Cat, Div. of National Car Rental  
The Vandermolen Co.

**UNDERWATER WEED RAKE**  
A.O.A. Research & Development Inc.  
Air-Lec Industries, Inc.

**UNLOADERS**  
Dico Co., Inc.

**UTILITY TRAILERS**  
Beck Mfg. Co.  
Magline, Inc.  
Miller Tilt-Top Trailers, Inc.

**VACUUMS**  
Allis-Chalmers Mfg. Co.  
Arctic Mizer  
Ariens Co.  
Billy Goat Industries, Inc.  
The Black & Decker Mfg. Co.  
Clarke Div., Clarke-Gravelly Corp.  
Conaway, Inc.  
Deere & Co.  
E-Z Rake, Inc.  
Giant-Vac Mfg., Inc.  
Hesston Corp., Lawn Equipment Div.  
Jacobsen Mfg. Co.  
MTD Products, Inc.  
Nunes Mfg.  
Parker Sweeper Co.  
Rego Div. Golconda Corp.  
Ryan, OMC-Lincoln  
Simplicity Mfg. Co., Inc.  
Sweepster, Jenkins Equip. Co.  
Swenson Spreader & Mfg. Co.  
Tennant Maintenance Systems  
Turf Vac Corp.  
Wheel-Horse Products

**VALVES**  
(Also See Irrigation Valves)  
Aqua-Dial  
Hypro Division, Lear Siegler, Inc.  
Inject-O-Meter Mfg. Co.

**VALVE BOXES**  
Ametek, Plymouth Plastics Div.

**VERTICAL SLITTER, TURF**  
BlueBird International, Inc.  
Ryan, OMC-Lincoln

**VIBRATORY PLOWS**  
Charles Machine Works  
Davis Mfg.

**WASHERS, HIGH PRESSURE**  
Century Engineering Corp.  
Fimco, Inc.  
Walsh Mfg. Co.  
Wayne Engineering Corp.

**WEED HARVESTER**  
Weed Eaters, Inc.

**WELDERS**  
American Lincoln Corp.

**WINCH**  
(Also See Hoist)  
Fairmont Hydraulics  
Hoffco, Inc.  
Ideal Crane Div.  
International Harvester Co.  
Fred A. Lewis Company  
Maasdam Pow'r Pull, Inc.