

UPDATE

Sports Field

Managers Association of New Jersey



Summer 2014
Vol. 14, No. 2

P.O. Box 205, Pennsville, NJ 08070 • 856-514-3179 • www.sfmanj.org • e-mail: mail@sfmanj.org

RUTGERS

LAWN, LANDSCAPE AND SPORTS TURF FIELD DAY

SAVE THE DATE!

Wednesday,
July 30, 2014

Including SFMANJ-Sponsored Table Top Trade Show

NOTE LOCATION FOR 2014: Rutgers Hort Farm II, No. Brunswick, NJ

By Brad Park, Rutgers University

New Jersey Turfgrass Association (NJTA), Sports Field Managers Association of New Jersey (SFMANJ), and Rutgers University will once again collaborate to hold the Rutgers Lawn, Landscape, and Sports Turf Field Day. This year's event will be held at Rutgers Hort. Farm No. 2, North Brunswick, NJ on Wednesday, July 30, 2014.

A table top trade show will be sponsored and administered by SFMANJ and is open to all vendors who sell products and services to the Green Industry. Coffee, bagels, Danish pastries, etc. will be served during the trade show. The trade show provides a great opportunity for attendees to network with other Green Industry professionals and examine the latest product offerings from Industry-supporting vendors.

NOTE: There will be no equipment demonstrations as part of the Lawn, Landscape and Sports Turf Field Day at Hort. Farm II in 2014.

Following the morning turfgrass education (see agenda on page 4), a fine lunch will be served to

all of those in attendance. The trade show will also be open during this time. Following lunch, New Jersey DEP pesticide recertification credits, and credits from neighboring states per approval, will be available to attendees.

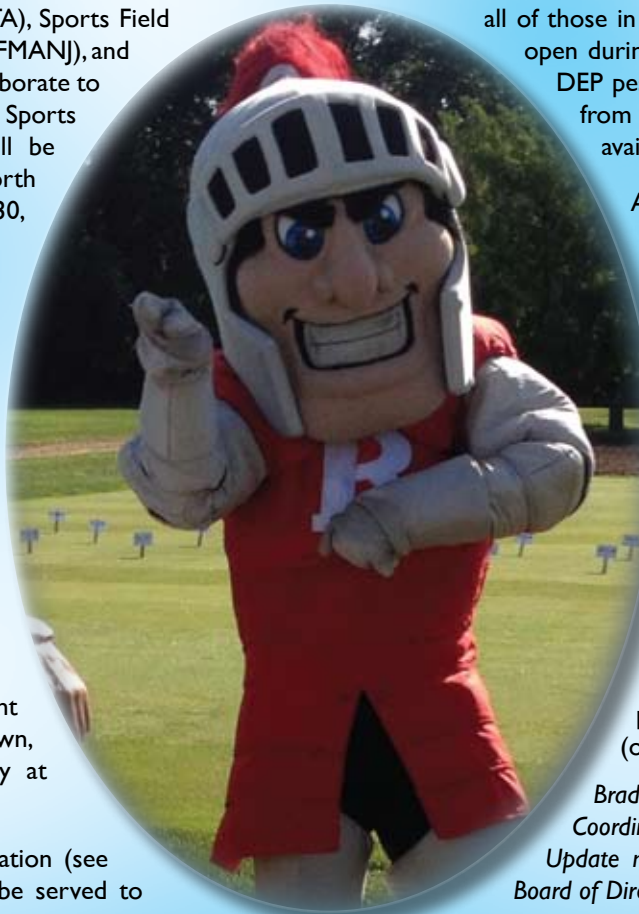
After lunch attendees will have the option to attend training for Fertilizer Applicator Certification. Attendees may then take a paper-based version of the Certification exam for \$75.00. See you on July 30!

Please note the following:

Attendees may register online by visiting the NJTA website: www.njturfgrass.org; (o) 973.812.6467; (email) execdirector@njturfgrass.org

Those vendors interested in reserving a table top for the trade show are encouraged to contact SFMANJ for more information and appropriate paperwork (website) www.sfmanj.org; (o) 856.514.3179; (email) mail@sfmanj.org

Brad Park is Sports Turf Research & Education Coordinator, Rutgers University; Editor, SFMANJ Update newsletter; and a member of the SFMANJ Board of Directors since 2003.



100

TORO

A CENTURY OF INNOVATION



Storr Tractor Company

Storr Tractor Company

Branchburg, NJ 908-722-9830



Thank you

To our valued customers!



Welcome! New and Renewed SFMANJ Members

Currently we have 238 new & renewed members. Sports Field Managers Association of New Jersey mailed invoices for 2014 membership dues to all current members. If you did not receive an invoice, please contact us at 856.514.3179 or download the membership form available at www.sfmanj.org. Mail membership dues direct to SFMANJ, PO Box 205, Pennsville, NJ 08070.

Daniel Andrus	Blair Academy
Anthony Barone	Down To Earth Landscaping, Inc.
Ed Biernacki	South River Board of Ed
Frank Botti	Monroe Township Recreation
Jason Bowers	Hopewell Valley Reg. School Dist.
Micheal J Brennan	County of Union
Bob Brettman	Rental Country Inc.
Jay Buck	Shearon Environmental Design
Virgil Caputo	Monroe Township
Alex Chappotin	County of Union
James T Cole III	Joseph's Landscaping
Andrew Collette	Mid Island Babe Ruth / Brooklyn Cyclones
Bill Corcoran	
Ryan Daddro	Student / Rutgers University
Dereck Davis	Kean University
Christian DeAtley	
Bill Deacon	New York Mets
Shannon Dech	Hopewell Valley Reg. School Dist.
Nicholas Delmar	Student / Rutgers University
Michael Dougherty	Wayne Twp.
Chris Drake	Monroe Township Recreation
Wade Elms	St. Josephs Monsignor Donovan HS
Ronald Ferri	St. Josephs Monsignor Donovan HS
Chris G Fox	New York Red Bulls
Kyle Genova	Student / Rutgers University
Jeffrey K Graydon	Princeton University
Pamela Griffin	New Jersey Recreation & Prks Assoc.
Michael Griffiths	Sportsturf LLC
James Hermann	Total Control, Inc.
Blake Hoerr	New York Jets
Elizabeth Holmes	Student / Rutgers University
Ronald S Holt	Palmyra BOE
Brad Horan	East Coast Track Consulting & Repair
Gene Huntington	Shearon Environmental Design Co, Inc
Donald Ippolito	Graco
Harold Jones	Palmyra BOE
Gerard Kerr	Kearny DPW, Shade Tree Div.
Richard Kerr	Aramark - Burlington Twp. Schools
Jeff Langner	Profile Products/Turf
Tony Lepore CEFM	Kenilworth BOE
Michael Lewandowski	Rutgers Prep School
John Lewless	Hopewell Valley Reg. School Dist.
Jeff Lloyd	O.A. Newton
Michael Lord	County of Union
Stephen Lotito	Lincroft Little League
Ed Lucid	Middlesex County Parks Dept.
Donald Lysinger	Twp of Hamilton

Continued on page 6

2014 SFMANJ BOARD OF DIRECTORS

OFFICERS

President	Matt Olivi, Piscataway BOE
Vice President	Rich Watson, Pine Hills Public Schools
Secretary	Scott Bills, CSFM, Sports Field Consultant
Treasurer	Sean Connell, Georgia Golf Construction

DIRECTORS

Fred Castenschiold.....	Storr Tractor Co.
Bernard Loungo	No. Burlington Co. Reg. School. Dist.
Brad Park	Rutgers University
Don Savard, CSFM, CGM	Salesianum School
Kevin Shipman	Kingsway Regional High School
Adam Simmons.....	Borough of Glassboro
Craig Tolley	County College of Morris
Mike Viersma	The Viersma Companies
Advisor	Dr. James Murphy, Rutgers University
Advisor	Ray Cipperly, Middlesex County Vo Tech Schools
Executive Secretary	Debbie Savard

MISSION STATEMENT

Committed to enhancing the professionalism of athletic field managers by improving the safety, playability and appearance of athletic fields at all levels through seminars, field days, publications and networking with those in the sports turf industry.

PO Box 205 • Pennsville, NJ 08070

Web site: www.sfmanj.org • Email: mail@sfmanj.org
Phone/Fax: 856-514-3179

National Organization
Sports Turf Managers Association
www.stma.org

INSIDE THIS ISSUE

Rutgers Lawn, Landscape and Sports Turf Field Day	Cover
New and Renewed SFMANJ Members	3
2014 Board of Directors	3
A Message from The President.....	4
Agenda: Rutgers Lawn, Landscape and Sports Turf Field	4
<i>Poa annua</i> - Misunderstood Frenemy	5
Meet Adam Simmons	6
Calendar of Events	6
An Irrigation Story	7
Turfgrass Irrigation Using Water Reels.....	8
Rutgers Turf Club tour of Yankee Stadium	9
Photo Recap: SFMANJ Spring Field Day.....	10
More from the 2014 Spring Field Day	12
South Jersey's Field of Dreams	13
Kingsway Varsity Baseball Field Project	15
A Friendly Reminder	18

This newsletter is the official quarterly publication of the
Sports Field Managers Association of New Jersey.

For information regarding this newsletter, contact:
SFMANJ at (856) 514-3179 or Brad Park at (848) 932-6327
Editor: Brad Park, Rutgers University, Email: park@aesop.rutgers.edu
Layout and Design: Debra Savard, Email: debbiesavard@aol.com

SFMANJ does not necessarily support the opinions of those reflected in the following articles.



A Message from The President . . .

by Matt Olivi

Sports Field Managers Association of New Jersey (SFMANJ) recently held its annual Spring Field Day at Delsea Park in Glassboro, NJ. We had a great turn-out, great weather and most importantly another great educational program.

The Spring Field Day was held on April 18, 2014 and featured many guest speakers and equipment demonstrations. We hope to continue this successful trend as we approach upcoming events this year. This summer, we will be returning to Rutgers Hort. Farm 2 in New Brunswick, New Jersey for the annual Rutgers Lawn, Landscape, and Sports Field Day. SFMANJ will continue the tradition of sponsoring and incorporating the annual Summer Trade Show into the event. Commercial members will be able to showcase their sports turf care products and services in tabletop tradeshow booths just as they did last summer. Be sure to join us for another great day of sports field education. It's always a great opportunity to view new products and obtain New Jersey pesticide and fertilizer recertification credits.

Looking even further ahead, SFMANJ is happy to announce November 6, 2014 as the date of the annual Fall Field Day. This year we will be showcasing the 2013 Field of the Year at Raritan Bay Waterfront Park. Keep an eye out for more information as the educational program and vendor opportunities develop.

I also want to take this opportunity to announce a recent addition to the SFMANJ Board of Directors. Adam Simmons, Sports Field Manager for Glassboro Parks and Recreation Department, was recently appointed to the Board. Adam has assisted SFMANJ in planning events over the past year and has demonstrated a great level of enthusiasm for administering educational resources to fellow field managers throughout the state. Please join me in welcoming Adam to his new leadership role within our organization.

*Matt Olivi is Sports Turf Manager,
Piscataway Board of Education, Piscataway, NJ;
and SFMANJ President*

FOR MEMBERS ONLY



Remember, to access the "Members Only" area on our web site, enter your name as it appears in the directory, all lower case with no spaces and no prefixes, suffixes or middle initials.

The password is "sfmanj".

Rutgers Lawn, Landscape and Sports Turf Field

Rutgers Hort. Farm No. 2,
North Brunswick, NJ

Wednesday, July 30, 2014

AGENDA:

7:30 AM TO 9:00 AM

Registration & Open Trade Show

9:00 AM TO 10:00 AM

- 2012 Kentucky Bluegrass Low-Maintenance Test
- Cool-Season Turfgrass Species Blends and Mixtures Under Low Maintenance and Tall Fescue and Kentucky Bluegrass Mixtures
- Broadleaf Weed and Kyllinga Control

10:00 AM TO 11:00 AM

- Optimizing Pythium Blight Control on a Perennial Ryegrass Turf and Suppressing Summer Patch with Good Cultural and Chemical Practices on Kentucky Bluegrass
- Pre- and Post-emergence Crabgrass Control
- Turfgrass Fertilization

11:00 AM TO 12:00 PM

- Annual bluegrass Control in Perennial Ryegrass
- Application of Traffic to the 2012 NTEP Tall Fescue Test
- Consumer Preferences for Home Lawns and Breeding Perennial Ryegrass for Salt Tolerance

12:00 PM to 1:00 PM

- Application of Wear and Traffic to the 2011 NTEP Kentucky Bluegrass Test
- Tiller Plot Selection of Tall Fescues for Brown Patch and Other Traits
- Traffic on Fine Fescues and Fine Fescue Screening for Disease Resistance

1:00 TO 2:00 PM

Lunch

2:00 TO 3:00 PM

(Optional) Basic Training for the Professional Fertilizer Applicator Certification Exam

3:00 TO 4:00 PM

(Optional) Fertilizer Exam

UPDATE

Update is published quarterly, Spring, Summer, Fall, and Winter. The Newsletter is edited by Brad Park., Sports Turf Research & Education Coordinator, at Rutgers University and SFMANJ Board Member. The design, layout, distribution, and advertising sales are currently managed by Debra Savard, SFMANJ executive secretary.

Past issues of Update, dating back as far as 2001 to the present can be accessed through the Michigan State University Libraries.

To access this archive, visit: <http://archive.lib.msu.edu/tic/updates>

POA ANNUA MISUNDERSTOOD FRENEMY?



By Don Savard, CSFM, CGM

I get many compliments in the early spring from visitors about how green and lush my playing fields look. In our business, we learn to take any credit we can get. I say thanks, give them a self-effacing grin and mumble modestly something about the weather conditions must have been right and we were just darn lucky.

Poa annua (annual bluegrass), you did it to me again. In a couple of weeks you will be a seedy mess, just before the sports playoffs. And just as soon as the pressure is off, there you are, looking real good again like nothing happened.

Like an insufferable coworker, just when I wish it would just go away, it surprises me and comes through for me in a clutch.

Read any of the trade publications and there are advertisements for new herbicide products that claim to control and even eradicate *Poa annua*. You might begin to believe that *Poa annua* is bad and feel there is something wrong with you because it is growing in your turf.

A weed is defined as a plant that is growing where it is not wanted. *Poa annua* grows wherever it wants. It is one of the most adaptable plants out there. If you are trying to grow a monoculture of anything (turfgrass to tomatoes), *Poa annua* would likely begin to

invade the stand if given the chance. It seems to grow everywhere in the world, hot, cold, wet and dry locales. It has even appeared on King George Island in the Antarctic South Shetland Islands as an invasive species.

Poa annua is described as a cool-season winter annual. Winter annuals are plants that germinate in late summer to early-fall, overwinter, and produce seed in the spring. Typical winter annuals die soon after seed production as daytime air temperatures increase. *Poa annua* is anything but typical. And it is not exclusively annual. There are even perennial *Poa annua* biotypes. To confuse things further, there are low growing types, upright types, bunch types and stoloniferous types.

So, what is so bad about *Poa annua*, after all, it has been successfully managed on golf course putting greens for years?

Well, there is the aforementioned seed problem. *Poa annua* is a prolific seed producer in the spring time. These seeds manage to spread from site to site by natural means such as wind and water and on shoes and the wheels of grounds equipment, contaminating soil wherever it can. Sometimes it comes with purchased soil, plants and new sod. The seeds remain viable in soil for a long, long time.

Continued on page 16

Commitment that's more than skin deep.

50th TURFACE ATHLETICS™



Turface Athletics' involvement in the game has run deep for the last 50 years. We've teamed up with grounds crews across the nation over the decades to provide safe and playable fields at every level of play. We are dedicated to providing meaningful industry support focused on responsible field education and consistently delivering the best products in the industry.

Celebrate with us and you can win all year long! Visit www.turface.com/50years.



TURFACE ATHLETICS™

The #1 Conditioner on
America's Most Playable Fields

MEET ADAM SIMMONS

By Adam Simmons

As a new board member of Sports Field Managers Association of New Jersey (SFMANJ), I would like to take a moment to introduce myself. I am the Crew Leader for the Park Maintenance Division in the Borough of Glassboro. I have worked for Glassboro for the last ten years. Though I have no degree, in this time I have learned a lot about maintaining natural sports turf as well as other aspects of the parks.



I have gathered most of my knowledge through courses offered by Rutgers University Office of Continuing Professional Education, as well as county extension, field days, trade shows, other members of SFMANJ, and "good old" trial and error, not necessarily in that order.

I believe it is my drive to always make myself better, and my passion for what I do, that has brought me to where I am today. I am currently in my second year managing eight parks. With twenty plus acres of natural sports turf, twelve skinned infields, seven playgrounds, three pavilions, and a dog park, there are always new aspects of the job to learn.

In the time that I have spent with SFMANJ, most of the members with whom I have met work for public schools or various vendors. I hope to use my experiences with park and recreation to enhance the SFMANJ Board, as well as the Association as a whole, by sharing my experiences in sports field management.

Adam Simmons is Crew Leader, Park Maintenance Division, Borough of Glassboro; and member of the SFMANJ Board of Directors

2014 CALENDAR OF EVENTS

RUTGERS TURFGRASS RESEARCH FIELD DAYS

GOLF & FINE TURF

July 29, 2014

Rutgers Hort. Farm No. 2

North Brunswick, NJ

www.njturfgrass.org



LAWN, LANDSCAPE & SPORTS TURF

July 30, 2014

INCLUDES SFMANJ-SPONSORED

TABLE TOP TRADE SHOW

Contact SFMANJ for more info (856.514.3179)

Rutgers Hort. Farm No. 2

North Brunswick, NJ

www.njturfgrass.org



SFMANJ FALL FIELD DAY

November 6, 2014

Middlesex County Parks - Raritan Bay Waterfront Park

South Amboy, NJ

856.514.3179

www.sfmanj.org



NJ STATE LEAGUE OF MUNICIPALITIES

November 18-20, 2014

Atlantic City, NJ

609.695.3481

www.njslom.org



NEW JERSEY GREEN EXPO

December 9-11, 2014

Trump Taj Mahal

Atlantic City, NJ

973.812.6467

www.njturfgrass.org

2015 STMA CONFERENCE AND EXHIBITION

January 13-16, 2015

Denver, Colorado

800.323.3875

www.stma.org

Continued from page 3

New and Renewed SFMANJ Members

Colin F MacDonnell III

David Maines

Mariusz Majchrowski

Ken W Mathis

Larry Mayerowitz

Michael A Medley

Joshua Moehler

Michael Morvay

Eric Muentener

James A Murphy Ph.D.

Michael W O'Connor

Michael Otero

Zach Owen

Bradford Pastrick

Rob Ragone

Frank Ravaschiere

Chuck Reynolds

Ramapo College of NJ

Borough of Madison

St. Josephs Monsignor Donovan HS

Brick Township

Middlesex County Parks and Recreation

Brookdale Community College-Collins Arena

Student / Rutgers University

Lakewood Blueclaws

Hopewell Valley Reg School Dist

Rutgers University

Bergen County Technical Schools

Sherwin Williams Paint Co.

Fisher & Son Co., Inc.

North Brunswick Township

Fredco Landscaping LLC

City of Long Branch

Turf & Ornamental Sales

Nancy Sadlon

Justin B Sadowski

Michael Schmalzer

Andrew Schwartz

Daniel Shemesh

Neal D Sitzman

James "JB" Stronski

Ken Sutton

Gary Tattersal

Andrew Tobias

Craig A. Tolley

Thomas J Torpey

John Vincentini

George Warden

Rich Watson

Jeff Weld

Lora Beth West

New Jersey Green Industry Council

Oak Knoll

FieldTurf

New York Red Bulls

New York Red Bulls

Till Paint Co.

Appoquinimink School District

Ocean Twp BOE

South River Board of Ed

County College of Morris

Monroe Township

Lacey Twp DPW

Middlesex Co Dept of Parks

Pine Hill Public Schools

Bayer

Student / Rutgers University

An Irrigation Story

 By Bernard Luongo

I would like to start this article by first thanking the SFMANJ Board of Directors for appointing me to the Board. I am honored that they feel I can serve in such a way as to benefit and strengthen our association. I will give it the best I can on any given day. Thank you again.

In March I had an opportunity to attend a continuing education course at Rutgers University on irrigation. Bob Dobson is a great instructor. No matter what your level of expertise is you will always take something away with you that will help in your irrigation adventure.

As I mentioned, irrigation is always an adventure: From the moment you charge your system in the spring to the moment you blow-it-out in November. There are so many things that can go wrong. Miles of pipeline and wires. Shut off valves. Zone valves. Heads that sometimes rotate and sometimes shoot water where they should. Programs that disappear in the wee hours of the morning. A true mid-summers dream.

My first course of business is to charge the main line of the system. Once that is done, I flush-it-out and recharge it with the valve open for short time to give it a chance to flush again; shut the valve and recharge again. I then turn each zone on manually and then off to make sure they are doing what they are told. If they are responding properly then I know I do not have an electric problem or a zone valve problem.

The next step is to turn on each zone and inspect each head for rotation, adjustments, and clogged nozzles. I make a note on my clip board of what needs to be done and will revisit the issues during the season as time permits. There are plenty of sports that need to be taken care of during the spring - as you all know.

After this task is completed I am ready for the system to run on automatic. Before I go home for the day, I turn on the program and take my water reading. The program at Northern Burlington County (NBC) runs from 2am to 10:30am. When I come to work in the morning I know exactly what field and zone should be throwing water. I will check the water reading again to see how much water I used. If the system functioned properly overnight, the numbers will line up. As anyone with an irrigation system knows, that is not always the case.

At NBC our zone box covers and irrigation heads are cut to remove any overgrown grass so when there is a problem you can find them easily. Extra things that are in-stock at our shop include: 90-, 180-, and 360-degree heads; schedule 40 pipe of many different diameters; elbow and swing joints. This year we will stock compression fittings and dresser couplings. It saves time having them in-stock. Of course you cannot stock everything. The scope of your problem will not

Continued on page 14

High Quality Bluegrass & Tall Fescue

Sand Sod grown on Hammonton sandy, loam-type soil designed for today's specialized modern athletic fields

Visit us on our web site: www.ttfarms.com

Our completely irrigated 700-acre farm allows production and deliveries to parts of Pennsylvania, Delaware, New York and all of New Jersey.

Labor Saving Big Rolls, please call for custom installation prices:

800-222-0591



609-561-7184
Fax 609-561-0296
401 Myrtle Ave. • P.O. Box 148
Hammonton, NJ 08037

SPARQ  www



Tuckahoe Turf Farms



TURFGRASS IRRIGATION USING WATER REELS

By Fred Castenschiold

Sports field and grounds managers get tired of the budget cuts year after year. Money is being spent, but not being channeled in the direction of sports fields and grounds. What is the reason? "Priorities", we are told. Meanwhile, as summer approaches and our sports fields are starting to dry-up, field use seems to increase year after year.

Water reels are an inexpensive, above ground irrigation system option that has been employed for many years. Water reels come in many sizes based on the needs of the sports field manager and water supply.

Keeping a beautiful green and safe sports field playing surface is important and is for what we all strive. This requires lots of work in many areas; this work is often wasted where there is no water source. Whether one is irrigating a 300 foot lacrosse field or an entire multi-field complex, a water reel is an option where budgets may be limited. Its portability allows the sports field manager to irrigate multiple fields with a single machine. Water reels operate

unattended and shut down automatically at the end of the run. For the next irrigation event, the water reel simply needs to be towed to the next field for connection to another water source.

With many models, sizes, and lengths to choose from, the sports field manager can pick the best reel for an application which, in some cases, will allow irrigation of an entire field in one unattended pass. Other advantages of water reels include their cost relative to in-ground irrigation systems and maintenance/cost savings with respect to repairing and winterizing irrigation heads.

Water reels can be employed in the management of synthetic turf fields. Water reels are available that can be used to rinse and condition synthetic turf fields, in about 30 minutes in some cases. Field hockey coaches particularly like this operation in that it minimizes ball bounce.

Consider this irrigation option next time the budget gets cut!

Fred Castenschiold is Sales Associate, Storr Tractor Co.; and member of the SFMANJ Board of Directors

SAVE THE DATES: JULY 30 & NOV. 6 FOR SFMANJ EVENTS



We know you work hard.
Let us work harder.

Lean on us for some of your business demands - we know we can work harder for you. This is why we've implemented the Partners Program and Business Solutions, and the Px3 Maintenance Package.

Px3 helps you with the planning process by providing customized bids for each project. We can accurately estimate the square footage of any property.

Customers who join our Partners Program earn points on every John Deere Landscapes purchase and redeem those points at an online store, for various industry events, or for cash on account. Program members are also eligible for our Business Solutions, which can help reduce your day-to-day business expenses.

Please contact your local branch to learn more about these opportunities. We are eager to help you with as many of your business challenges as possible!



JOHN DEERE
LANDSCAPES

800-347-4272
www.JohnDeereLandscapes.com

Rutgers Turf Club tour of Yankee Stadium

April 25, 2014

Photos by Brad Park, Rutgers University

Thanks Dan Cunningham, Head Groundskeeper and the 27-time World Champion New York Yankees for providing Rutgers Undergraduate Students with a field tour!



Photo Recap: SFMANJ Spring Field Day

Photos By Debbie Savard



OUR REPUTATION...

The Viersma Companies are family owned and operated and we stand behind our reputation for quality workmanship with every job we do. We have been in business for over 45 years and believe that service and reliability are key to our success. We are more than willing to accommodate to meet your needs!

*Family owned and operated
since 1965*

A certified installer of:



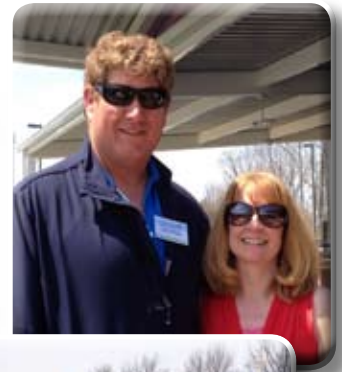
VISIT: www.viersma.com
CALL: (908) 852-0552

OUR SERVICES...

- Aerification
- Overseeding
- Topdressing
- Laser Grading
- Waterwick® Turf Drainage System
- Drainage Installation & Repair
- Infield Renovations & Construction
- Field Renovations & Construction



South Delsea Park, Glassboro, NJ April 22, 2014



Outsmart Mother Nature... Year Round!

EVERGREEN™ TURF COVERS

With 30 years of field proven experience and the longest warranties, EVERGREEN™ from COVERMASTER is the smart choice

SMART EDGE TECHNOLOGY™

- Hems and grommets are not required
- Unlike Polypro fabrics, EVERGREEN™ will not unravel
- Can be cut to custom sizes and shapes on site
- Anchor pins can be placed anywhere on the cover

UNIQUE DESIGN CREATES A TRULY 4-SEASON TURF COVER

- Winter blanket • Early spring green-up • Summer overseeding & repair • Frost protection • Extend your growing season

BE SURE TO ASK FOR EVERGREEN™, THE ONE WITH COLOR

- Provides additional light spectrum benefits for the turf
- Choose color based on your climate



Can be cut or shaped without fraying thanks to Smart Edge Technology™



The with and without look of natural turf using the EVERGREEN™ cover



COVERMASTER™
AHEAD OF THE GAME

Call Toll Free: 1-800-387-5808
Int'l: +1-416-745-1811 • FAX: 416-742-6837
E-mail: info@covermaster.com
www.covermaster.com



covermaster.com/evad/

© 2013 Covermaster Inc.

More from the 2014 Spring Field Day

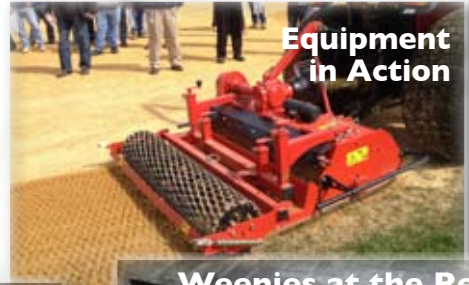
By Debbie Savard



Equipment Demos



Covered Trade Show



Equipment in Action



More Demos



Excited Vendors



Weenies at the Ready



A Great Time Was Had by All



Great Guest Speakers



SFMANJ Field of the Year Contest 2014

ELIGIBILITY:

- Must be a current member of SFMANJ
- Only school and parks/recreation fields are eligible
- Must be a natural grass field/fields

PLEASE TELL US ABOUT:

- Playability and appearance of the playing surfaces
- Your maintenance program and what you did to improve your field
- Your yearly budget for this field

Sports groups may be used in your photos

AWARDS:

The winners will be honored with a plaque at the New Jersey Turfgrass and Landscape Conference & Expo in December 2014 and will be featured in an article in SFMANJ's Update newsletter.

The first place winner will also receive a stay at the Trump Taj Mahal, Atlantic City and free registration to education courses and trade show at Expo 2014.

SUBMITTING YOUR ENTRY:

- All entries are to be submitted by mail or e-mail and must be received by September 30, 2014.
- Entries are limited to 10 color photos. Please include the name, location and owner of the facility, along with your name, position, and contact number.

Mail Entries to:

SFMANJ 2014 F.O.Y. Contest
P.O. Box 205, Pennsville, NJ 08070

OR E-mail to:
mail@sfmanj.org

Call for more info:
856-514-3179

website: sfmanj.org / e-mail: mail@sfmanj.org

Photos will not be returned and may be used on SFMANJ website and promotional settings

2013 WINNER
Middlesex County Park Commission
Raritan Bay Waterfront Park
Football Field
Managed by Larry Mayerowitz

SOUTH JERSEY'S FIELD OF DREAMS



By Phil Anastasia

EDITOR'S NOTE: This column first appeared at philly.com on April 6, 2014 and is being published in SFMANJ Update courtesy of the author, Phil Anastasia

The best football fields and basketball courts are the same rectangular shape.

Baseball fields are different.

Like some football fields and basketball courts, many of the best baseball fields in South Jersey are notable for their location, backdrop, and the way their surroundings impact the fan and playing experience.

But some baseball fields are truly different - with odd shapes and unusual dimensions, with short porches in right field, and wide variations in the amount of foul territory behind home plate and along both baselines.

Here's a look at some of South Jersey's most notable high school baseball fields.

Honorable Mention

Bishop Eustace/Holy Cross. These fields are linked because both are marked by such short right fields. Players at Bishop Eustace routinely crack homers that land on or over Route 70, and those at Holy Cross take their shots at clearing the high fence that protects the school's regularly bombarded tennis courts.

Cherry Hill East. Dave Martin Field has been upgraded over the last few years and has a cool orientation with home plate jammed into a corner of the school property.

Cherry Hill West. Recently re-sodded, this field sits down from the parking lot, has the school as a backdrop, and features those banners in center field that commemorate the program's national ranking over several seasons in the late 1980s and early 1990s.

Deptford. Annual host to Joe Hartmann Diamond Classic games, this field is most notable for the way those residences behind the left-field fence beckon optimistic right-handed power hitters.

Maple Shade. There's a Little League feel - that's a compliment - to this field because of the way the clubhouse crowds home plate and the bleachers seem crammed tight to the baselines.

Paul VI. The recently refurbished backstop area, with its brick half-wall, creates a unique feel to this field, as does the fact that the center-field fence might be closer to home plate than at any other field in South Jersey.

Shawnee. This place has a nice feel with big pine trees behind left field and air currents that seem to produce home runs regularly.

Timber Creek. The field is nondescript in its location and dimensions but makes the cut because it's an absolute launching pad. As with

Shawnee's field, it must be something about its orientation with regard to the prevailing wind.

Washington Township. You park in the Acme lot and backdoor your way to the well-maintained place that has hosted countless memorable moments, involving both the Minutemen and Diamond Classic games.

West Deptford. Union Field is a big place that feels like more than a high school site, and has perhaps the best three-sided grandstand in South Jersey.

Wildwood. Maxwell Field is a well-manicured facility behind the Byrne Rec Center on Youngs Avenue. It's just a few blocks from the boardwalk, so it's got that going for it.

The Unique 10

10. Haddonfield. Spicer Field, named for legendary former coach Russ Spicer, is a little gem set in an open space that springs open like a jewel box at the end of a residential neighborhood on Radnor Avenue.
9. Pennsville. Ed Rieger Field just feels small-town-y with its skin infield, tight bleachers, and adjacent street. It's home to one of South Jersey's best programs, too. The field also hosts the annual "Pop" Bob Tournament in honor of one of the athletic program's most beloved supporters.
8. Overbrook. This field is remarkable for one reason: The grounds crew plays at the major-league level. Just a sparkling field.
7. Eastern. Joe Hartmann Field is special because of its artificial-turf infield, including those red base paths. Plus, that big scoreboard in right field dares left-handed power hitters to take their best shot.
6. Clearview. The best field you probably haven't seen, since it's less than a year old.
5. Bridgeton. The Bulldogs play in Alden Field, a historic old park that hosts the annual Bridgeton Semi-Pro Tournament, one of the first events to use speedup rules and the designated hitter.
4. Millville. This field that backs up to a wooded area recently was spruced up, thanks to the generosity of its most famous former player, and the place now is officially known as Mike Trout Field.
3. Audubon. Hank Greenberg Field has a great behind-the-backstop area, with three separate seating areas. Like the school, it is nestled in a neighborhood and sits a long home run from Audubon Lake.

Continued on page 14

An Irrigation Story

be revealed until you excavate and you might have to run and get something different. The common things can be stocked.

The real tale of our irrigation system started seven years ago. I inherited a system that had just blown its casing. Once the new well was drilled another contractor was putting in a baseball backstop and hit our 4-inch main line along with all the wires headed out to our fields. Yes, they were all red wires. He reassured me that when he was done, the fix on the 4-inch line would not leak and that all the electric repairs would work. However, he could not guarantee what field or row would come on when a specifically zone was turned-on. Needless to say, he was right on all three counts.

When I checked the zones, a row would come on in Field 19 while another would come on in Field 21. Not one zone was in sequential order - which is important if you only want to irrigate one field manually. So, this was like having the Abbott and Costello of irrigation systems.

I shook my head and laughed. I least I had water coming out of the ground - an improvement. With the help of another contractor we managed to get the zones in the order that I wanted by rearranging the wires in the control box - another improvement.

Under his recommendation, NBC purchased and installed a Variable Speed Drive to protect our well head in case of a catastrophic rupture to our lines. If the pump runs above 3450 rpm over 5 minutes, it automatically shuts down. Great stuff. This did not happen over a short period of time but consistently over the years.

Continued investment and maintenance every year improves your system to a point where you know that the system will not catastrophically let you down. Hey - They leak. You fix. One of my favorite leaks, if you can have one, is the volcano look. NBC had one of those on the perimeter of our football field. What a bubble that was. Laughed like hell. Easy to find where that leak was. We dug it up and fixed it. It was also the sign of really good tight knit turf, good root zone. See, there are good things that come of leaks.

I hope your water comes out where it is supposed to and your mowers enjoy the turf. Until next time, Keep on turfing.

Bernard Luongo is Lead Groundsperson, Northern Burlington County Regional School District, Columbus, NJ; and a member of the SFMANJ Board of Directors.



**Do we have your
e-mail address.**

**Send a note to
mail@sfmanj.org
to make sure we have it
or to make a change.**

SOUTH JERSEY'S FIELD OF DREAMS

2. Haddon Heights. Eighth Avenue Field is about as old-school as it gets, from its skin infield to its location adjacent to West High Street to its tight backstop and those woods behind right field. There's a lot of tradition, too, both for the Garnets and the American Legion team that also plays there.
1. Gloucester Catholic. Joe Barth Field has history on its side. The patriarch of the first family of South Jersey baseball and namesake of this field, who died last month at age 92, created the Brooklawn American Legion program on this little slice of sandlot in 1952.

The clubhouse is crammed against home plate, and there's an elementary school in center field, but the place's signature aspect - besides a shortage of parking and the steady traffic on Browning Road - is the old church behind left field.

Ultimately, this is the No. 1 unique field in South Jersey baseball because of the legacy of the man for whom it is named. He set the standard for all those Brooklawn and Gloucester Catholic teams that bring all that championship hardware back home to Pop's house.

Phil Anastasia is an award-winning sports columnist for The Philadelphia Inquirer. His work has been cited by the Associated Press Sports Editors and the New Jersey Press Association, and his 2011 column on the tragedy at Mainland Regional High School won first place in the New Jersey Chapter of the Society of Professional Journalists.



**Mound Clay
Infield Mix
and
Amendments**

YOUR HOME & FIELD ADVANTAGE

Call Sean Connell

**404-216-4445 seanmconnell@comcast.net
www.georgiagolfconstruction.com**



**William Mast
Steve Thompson**
Office: 610-327-3390
Fax: 610-327-0581

1486 S. Hanover St.
Pottstown, PA 19465
www.aer-core.com
office@aer-core.com

**Turfgrass Services
Equipment Sales**

Kingsway Varsity Baseball Field Project

By Mike Nicotra



In the summer of 2012, I headed a project to reconstruct the Kingsway Varsity Baseball Infield. The varsity field was the old Junior Varsity field when I attended Kingsway. It was an all-dirt infield on an old peach field and had many years of use. The thing that really caught my eye was that the school had dedicated the field to U.S. Marine First Lieutenant Ryan Iannelli who had died serving this country in Afghanistan. I was a senior and Ryan played with us on the varsity team as a freshman. So, with that being said, once I saw the field I definitely wanted to improve it. Ryan Iannelli and current and future Kingsway students deserve a nice and safe place to play-on.

First we had to take-out four inches of infield mix and bring in a new mix. We decided to use some clay in the mix to keep it a little firm but not so much that it would turn to rock. We went with a 13% clay mix. Tom Viviano from Vivano Construction took out the existing infield. Tom and I spread eight tri-axes of new material and used his bulldozer (with laser grader) to make sure we had the right pitch for the whole field.

The next step was to have irrigation laid so when we put the sod in we had water for it. Another Kingsway grad (my classmate Jon Sturgis, owner of Colonial Land Design) was kind enough to help out and perform the irrigation work. They installed four new heads to take care of the turfgrass area and moved some

heads at the beginning of the outfield to aim back and water the infield dirt.


Once that was all done, we brought-in a few truck loads of topsoil and prepped the field for sod. Lucky for me and our budget, the man that I work for and the owner of Turf Trade Alan Phillips, has a very good relationship with East Coast Sod in Pilesgrove, NJ. Dave Giordano, Farm Manager, provided us with Kentucky bluegrass at a price that was amazing for our budget. Dave's crew came in with the big rolls and had the entire infield sodded in less than four hours. Everything was coming together.

The last step in this project was some touch-up work and to teach the kids how to do daily maintenance on the field. One Saturday, with the help of Kingsway baseball coach Ian Enders, we had all the kids on the team come in and learn all the little things about the field. I showed them how to pack the mounds and home plate area after each game and practice and how to prevent lips from forming along the base lines and lip around the infield.

After eight long weeks Kingsway and Ryan were provided a brand new infield. Kevin Shipman, Grounds Director at Kingsway, and the baseball team are doing a fine job maintaining the field to this day.

Mike Nicotra has a sales position with TurfTrade, Mullica Hill, NJ and is an SFMANJ Member

Georgia Golf Construction, Inc.
Athletic Field and Track Specialists



<ul style="list-style-type: none"> ◆ Native soil athletic field construction ◆ Synthetic field base construction ◆ Laser grading ◆ Pitcher's mound building 	<ul style="list-style-type: none"> ◆ Synthetic track repair and installation ◆ Sodding and seeding ◆ Infield laser grading ◆ Aerification services
---	--

Georgia Golf Construction, Inc., 1441 Route 50, Woodbine, NJ 08270
www.georgia-golfconstruction.com/609-628-2597/404-216-4445



Turf Trade

Your #1 Turf Supplier

**Fertilizers/Seed
Plant-Protectants
Soils/Sands**

The Turf Trade
 517 Franklinville Road
 Mullica Hill, NJ 08062

856-478-6704

Steven Segui 302-354-7209
 Michael Nicotra 856-472-2733
 Brian Robinson 484-886-0021

www.theturftrade.com

Visit our web site:
www.sfmanj.org



Jersey Soil Blending

Phone: (973) 320-2730
 Fax: (973)-667-6599
 visit us at njsoil.com
info@njsoil.com

P.O. Box 525
 Nutley, NJ 07110

POA ANNUA - MISUNDERSTOOD FRENEMY?

Continued from page 5

Some people don't like the light green color. Mixed in with more desirable turf grasses, it gives the sward a mottled appearance that is hard to mask with the addition of nutrients. Depending on the growth habit of the *Poa annua* biotype (upright or low growing) the textural differences between the *Poa annua* and surrounding turfgrass becomes noticeable and can affect ball roll.

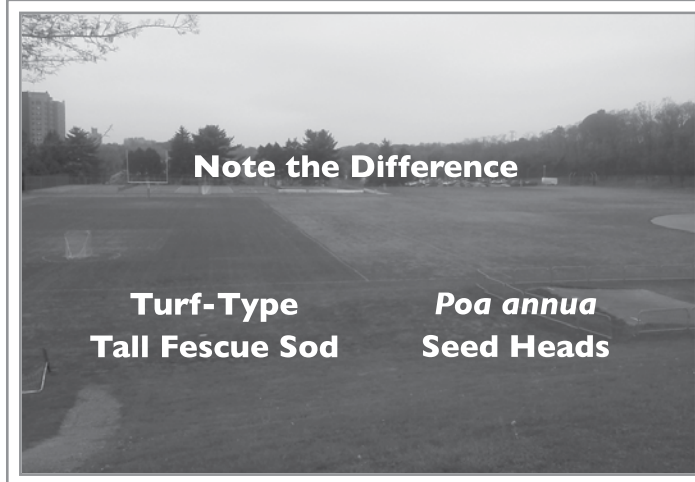
Poa annua thrives in cool moist weather such as early spring and late fall. Hot summer weather can put it into stress causing the annual variety to die off. The perennial types are sensitive to environmental stresses and disease pressures, but if managed properly will do just fine. When the favorable weather conditions return, the *Poa annua* comes back and things go back to normal.

So whether or not *Poa annua* is good or bad really depends on your site specific criteria. For example, if you are growing a showcase stand of turf and have a solid management program, *Poa annua* would likely be your enemy. If you manage a highly trafficked high school practice field like mine (over 900 events per year), *Poa annua* can be tolerable if you know what to expect and how to manage it.

In the late spring, half of my sports field is relatively *Poa annua*-free. The other half is heavily infested and fully in seed. The reason is that we have been renovating certain areas, fully stripping the existing worn grass and re-sodding with good clean turf. Stripping the old stuff off reduces the existing seed bank. Where we have not renovated really looks bad when it is in seed, but by summer

will start looking good again once the seeds and stalks disappear. On our campus most of the use is over by the end of May, so I can begin feeding, irrigating, cultivating and growing my turf back in. It is amazing how 2 months of good agronomic practices can restore a turf stand. With all of this care, the *Poa annua* that has survived will thrive in the areas that receive heavy compaction or drain poorly. In early August, I control weeds so I can be relatively weed-free when I overseed. In mid-to-late August, I begin overseeding with improved varieties of Kentucky bluegrass. In September I switch to improved perennial ryegrass and continue seeding into November. I aerate weekly, irrigate and fertilize. I usually begin to notice *Poa annua* beginning to germinate in late October when we start to get frost.

Continued on page 17



Visit our web site:
www.sfmanj.org

NATIONAL SEED PROFESSIONAL TURF PRODUCTS

Specializing in Quality Grass Seed
to Meet All Your
Turf Performance Standards

Call for a Catalog

800-828-5856

Carrying a full line of quality mixtures
especially formulated for:

SPORTS AND ATHLETIC FIELDS

LOW MAINTENANCE AREAS

GENERAL GROUNDS

GOLF, LAWN AND RECLAMATION

Technical Agronomic Support and
Custom Blending Available

SFMANJ FALL FIELD DAY

THURSDAY NOVEMBER 6, 2014

At beautiful
Raritan Bay Waterfront Park

Featuring SFMANJ's
2013 Field of the Year

Watch for further information

Or Call 856-514-3179

Grass Roots Turf Products

A company focused on Service, Technical Support and Quality Products.



LebanonTurf



We carry a variety of products to fit your needs.

(We carry many products, this is just a sample. See our website and catalog for full line.)

- Fertilizers
- Pesticides
- Soil Amendments
- Field Conditioners
- Mound Clay
- Stripping Paint
- Guideline
- Spreaders
- Tools



Address: 4 Middlebury Blvd.
Suite 14
Randolph, NJ 07869

Phone: 973-252-5455
Fax: 973-252-2881
Website: www.griturf.com

Continued from page 16

POA ANNUA - MISUNDERSTOOD FRENEMY?

By the late fall my practice fields have decent turf coverage, although it is a mixed stand of Kentucky bluegrass, perennial ryegrass and turf-type tall fescue with *Poa annua* mixed-in. The stand has acceptable density and holds up to play into December and beyond as intramural flag football is played all winter if conditions permit. March 1 is the first day of spring preseason, and the *Poa annua* has helped to hold the soil and reduce erosion. The field will look pretty good once the soil warms up in April, and will look good until it goes to seed again in May.

So I guess I could describe *Poa annua* as my frenemy. At times it is a nuisance, at other times it is my friend. Eradication is expensive and difficult. Prevention is almost out of the question. When it is looking good, nobody seems to notice. Funny how that is!

Don Savard is a Certified Sports Field Manager (CSFM) and Certified Grounds Manager (CGM); Director, Athletic Facilities and Grounds, Salesianum School; and a member of the SFMANJ Board of Directors.

Liquid & Dry Products for your Professional Needs



PLANT FOOD COMPANY, INC.

Perfectionists Like You

Cranbury, New Jersey
Toll Free: (800) 562-1291
Fax: (609) 443-8038
www.plantfoodco.com
E-mail: pfc@plantfoodco.com



AdamsEarth® - Biostimulant

The Original Holistic Health Product for your Plants & Soil

impulse™ - Biostimulant

Reduce Wilt, Strengthen Cell Walls, Increase NPK Uptake

Phosphite 30 - Potassium Polyphosphite

Activate Natural Defenses, Systemic Mobility & Longevity

20-0-3 25%SRN - Liquid Fertilizer

Triazone SRN, Maintain Health, Vigor & Color Longer

16-0-8 50%SRN - Liquid Fertilizer

EDTA Chelate Micronutrients w/ Sulfur, Foliar & Root Feed

25-0-5 .5% Iron - Dry Fertilizer

25%XCU, Less Applications Needed, Sulfur Coated

pHusion Lime - Soil Amendment

Reacted w/ Organic Acid, Active 4 Times Faster



Clean, Safe Products Manufactured For The Ultimate Plant Health Perfectionist.

A Friendly Reminder . . .

By Bernard Luongo

Turfmiesters: We are the guardians and stewards of our properties. Treat them like you own them. Complete your tasks with nothing but quality in mind as if you were getting the property ready for sale.

Our properties tell us when they are healthy and when they are sick. We see the symptoms if we our paying attention. This is how they talk to us.

In return, we must stand-up for our athletic fields against foolish abuse. As guardians, we must speak on their behalf. We know what they need through soil tests, when they need to be rested and what normal wear is during a season.

Everyone's fields need the support of the Athletic Director, Facilities Director, Business Administrator, and Superintendent. If we do not protect our fields from foolish abuse, it puts our children at risk of unnecessary injury.

We must emphasize the fact that turf is a living and breathing entity on this planet and must be treated with the same respect as every other living organism. The end result is a safe playing field for our children and a good looking field also.

On a lighter note, the cat is finally losing some fur. We have a weather predicting cat in our household. Depending on how much weight and fur she puts on tells me how bad a winter it is going to be.

Bernard Luongo is Lead Groundsperson, Northern Burlington County Regional School District, Columbus, NJ; and a member of the SFMANJ Board of Directors.

HAVE YOU CHECKED-OUT OUR WEB SITE LATELY?

- ✓ Check our Events page for upcoming events and pictures of past SFMANJ functions.
- ✓ Check our Resources page for past issues of our Newsletter Update, Minutes from past Board Meetings, links to useful information and job postings.
- ✓ Check our Contact Us page for direct links to all of the Board of Directors. Call us with any questions or comments.
- ✓ Check our Vendor page for interactive links to our advertising vendors' web sites and a complete list of all our vendors. Call them first! They are happy to answer any questions.
- ✓ Check our New MEMBERS ONLY Section on the Home Page for Membership Directory and Minutes

Sports Field
Managers Association of New Jersey



Dr. Henry W. Indyk Graduate Fellowship in Turfgrass Science

As many of you know, the turfgrass industry lost a dear friend and colleague in September 2005. We will all miss Henry very much and would like to insure that his legacy lives on. The Indyk family would like to establish a memorial fellowship to support graduate students interested in applied turfgrass science. This fellowship is being created to help assure that tomorrow's graduate students have the financial resources to get an advanced degree in turfgrass science at Rutgers University. To fund a full graduate assistantship each year in Henry's name, we will need to raise a total of \$400,000. Your generous support at this time will bring us closer to reaching this goal.

To make a tax-deductible contribution today, please send a check payable to the Rutgers University Foundation, 7 College Avenue, New Brunswick, NJ 08901. Be sure to indicate "Indyk Fellowship, Turfgrass" in the memo portion of your check. If you desire, you may provide a donation in the form of a pledge payable over several years.

*For information on other ways to support this fellowship, please contact
Dr. Bruce B. Clarke, Director – Rutgers Center for Turfgrass Science
(848) 932-6295, ext. 331; or clarke@aesop.rutgers.edu or*

SPOTLIGHT on our ADVERTISERS

If you are a newsletter advertiser, please feel free to submit an article to Update profiling your company, services and/or products.

Entitled "Spotlight on our Advertisers", these 1/2 page articles can include your local salespersons' names, phone numbers, and email addresses along with any local events you are sponsoring.

It can run next to your company's ad or be in a separate area of the newsletter.

AND IT'S FREE!



Actual photo – not retouched.

Your grass will be greener and thicker, sooner with **CoverSports FieldSaver® Winter Turf Blankets/ Growth Covers.**

We've got you covered all year long! Protect turf from harsh winter conditions! Promote faster spring growth and green-up!

- 8 Year Limited Warranty
- Heavy 100% woven polypro fabric
- Reinforced hems and grommets all edges



PPL Park, home of the Philadelphia Union, MLS



Stakes keep covers in place in brass grommets at 5' intervals.

"The results were incredible..."
Paul Heron, Grounds Supervisor,
Unionville-Chadds Ford School District, PA



For price quotes, sizes and fabric specs, visit www.CoverSports.com • sales@coversports.com • 800-445-6680
We make covers for all athletic surfaces: Rain Covers, Sideline Tarps, Track Protectors



Humphrys CoverSports
Industrial and Athletic Fabric Products Since 1874



Double 'D' Turf, LLC

Dennis DeSanctis, Sr.
Monroe Twp., NJ
dennis@DoubleDTurf.com
732-241-7378

Drill & Fill
Deep Tine Aeration
Galaxy Turf Tires
Athletic Field Aeration
Turf-Time Equipment

www.DoubleDTurf.com

Sports Field
Managers Association of New Jersey
P.O. Box 205
Pennsville, NJ 08070



Or Current Occupant

SportsTurf
MANAGERS ASSOCIATION
Experts on the Field, Partners in the Game.

Moving Ahead To Serve You Better

TORO.
A Toro Partner

YOUR FRIENDS AT...
**TURF
EQUIPMENT**
AND SUPPLY COMPANY

888-384-8676 • www.turf-equipment.com