



The Course At Wente Vineyards To Host Annual Meeting

By Jeff Shafer

It is a pleasure to host the Annual Meeting and I look forward to seeing everyone on Monday the 13th. In doing so, I'd like to reflect upon some of the people and things that have helped me out along the way.

At Wente, the key to success starts at the top. For us, the customer is always on top, serviced by a dedicated staff striving to uphold values expressed in our mission statement, "EXCEED EXPECTATIONS." The following three individuals are the rudders that steer the ship for the Golf Course Maintenance Department. I would like to introduce them to you:

John Cunningham – Service Manager

Started May 1997 at Wente

First hire of golf course

- Was here during all of construction and grow-in. Manages assistant mechanic and cart mechanic
- Joined the Merchant Marines in 1980, served until 1990
- Traveled the world performing maintenance on their largest ships
- Worked in engineering and prides himself on the fact that there is no Napa Auto parts in the middle of the ocean. Preventative maintenance is the key! Adapted this principle to daily course maintenance
- Worked for West Star from 1995 - 1997 where he set up new equipment and performed repairs as needed

Hobbies: Has two lovely grand daughters and one Harley Davidson

Comments: Would make a great assistant supt., if he wasn't such a good mechanic

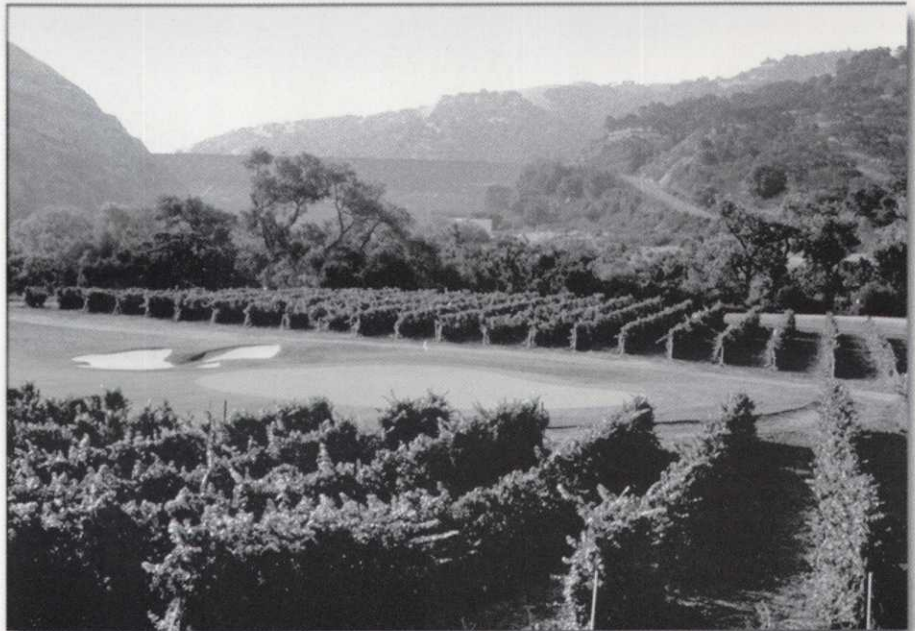
Mike Souza – Assistant Superintendent

Started at Wente Jan 1999

Graduate of Cal Poly San Luis Obispo 1998 Started in the horticultural business in 1996 in a local retail nursery

- During college worked at golf courses of Black Lake, Nipomo and at Arrow Creek in Reno during the construction and grow in, and at Lotus Land (botanical garden)

Hobbies include: working on cars (Mustangs), snow skiing



Designed for the novice and professional, Wente is situated in the Wente family estate Vineyards in Livermore, California.

- Has a passion for studying golf course architecture. Every time I leave on vacation, I'm not sure if some sort of gorse is to be planted or new sod wall bunker is going to be built.
- Has been a very important part of the golf course maintenance at Wente. Has tremendous dedication and commitment. Is incredible at detail quality maintenance. Took over the management of the restaurant grounds and organic herb garden and took those to higher levels.

Comments: He is going to make a great superintendent and will serve the GCSANC well.

Tim Roche – Assistant Superintendent

Started at Wente in 2002

Graduated from Penn State last year with a four-year degree.

- Has strong desire to be involved in the agronomic part of the business. Loves to study and work with the plant, soil and other parts that make up the agronomic side of the business.
- Is currently managing our IPM program and looks forward to improving and expanding our programs.

Hobbies include: playing the guitar, loves Jerry Garcia the Grateful Dead, and loves to read identification books of plants and trees.

- After graduating high school, traveled with the Grateful Dead, working several of the Dead shows in lighting and stage set up.
- Originally from Pennsylvania Worked for PG&E in Tree Pruning and Line Maintenance
- Loves natural habitat and has worked in the restoration of natural areas in Oregon.

Comments: Generally loves the outdoors and sees his career possibly going into the consulting side of the business.

There are some other people I feel I must thank, the maintenance staff that work so hard throughout the year, our Director of Golf, Devin Meheen, who works endless hours not only for Wente, but has also given many hours assisting in the Economic Impact Study being done by the CGCSA. Devin has also been the key person involved in hosting a number of our GCSANC events. I must also thank Terri Baron, our Golf Course Controller. She has been a great asset to our company as well as supporting me during my tenure on the Board. Finally, I thank my children, Sean and Taylor, and my wife Seana for supporting my career. I couldn't have done it without you.

We at Wente are looking forward to hosting the GCSANC Annual Meeting on January 13th. Hope everyone had a great holiday season and I wish you all the best in 2003.





President's Message

By Jeff Shafer

THANK YOU!

To be in golf,
Was where I wanted to be:
Ever since I can remember,
It is all I could see.

To work on a course,
Was such a thrill:
To climb the industry ladder,
Seemed such a steep hill.

I started at the bottom,
Just like all of you:
To work my way up,
Was so very very hard to do.

Many years later,
I found myself there:
What I thought was the top,
The course now under my care.

And then along this journey,
I was asked in another way:
To be part of the golf industry,
In leadership they say.



Jeff Shafer
The Course At Wentz Vineyards

It was during this time,
Over the last three years:
I found what it meant,
To be honored by your peers.

They changed my life,
Not just in a professional way:
My priorities became more oriented
With not just what I get paid.

My Lord and my family,
Became first in my life:
And my career in golf became second,
No matter the strife.

I learned to serve,
With many mistakes even today:
But I continue to strive,
To here what you say.

You made me a better person,
By honoring me this way:
I am forever indebted,
No amount of years could I repay.

There are so many to thank,
I cannot begin to start:
However you know who you are,
And I say THANK YOU from my heart!

Vote For Mike Hill For GCSANC Director In 2003-2004 Term

Greetings fellow members, my name is Mike Hill and I am the Golf Course Superintendent at Moffett Field Golf Course in Sunnyvale, where I have been for five years. As you probably know, I've served on the GCSANC Board of Directors for the past 12 months.

I would like to have your support in my campaign for another term on the Board. The last year has been a pleasure serving the GCSANC membership and working with my fellow Board members in conducting association business. This experience has shown me that it takes many dedicated people to effectively service the membership. It is my hope to build a better foundation for future association matters.

Best regards,

Mike Hill

Vote For Terry Grasso For GCSANC Director In 2003-2004 Term

I am grateful for the nomination to serve as a Director for the GCSANC. As some of you may recall, I served previously as Director in 1997-1999. Due to personal reasons I was unable to continue my service, however I am now ready and excited to resume my service to this association.

As a Director, I hope to renew my contributions to our golf events, media activities and sponsorship program and offer my support to our President and fellow Board members, as we work to strengthen our current services and programs.

With the support of the membership and new Board, I look forward to the challenges that lie ahead and the opportunity to shape the future of our association.

THRU THE GREEN

Golf Course Superintendent's Association
of Northern California

Publisher's Note For 2003



Patricia Hill
Publisher of TTG

I want to thank the GCANC for choosing my advertising agency, Hill Design to produce the new and improved Thru The Green bi-monthly newsletter that will launch sometime in mid-February.

We are excited and enthused to revamp the design layout by adding a full color cover and back, increase the number of pages from 12 to 16 and give it a more updated look for 2003.

I look forward to working closely with the committee on the NEW TTG and want to thank the 2002 committee and members personally for all their support and hard work in making TTG grow. **Thank You!...** Jeff Shafer; President, **Ken Williams**; Editor, **Bob Costa**; Past Pres., **Barb Mikel**; Exec. Sec., **Andy Slack**, **Emmy Moore Minister** and to all the affiliate members that supported TTG in 2002. **Happy New Year Everyone!**



Office Notes

By Barb Mikel

Hope you all had a great holiday! The pre-holiday weather was dramatic and hopefully not too destructive on your courses. This is the "Ying & Yang" time of the year for me. I look forward to the New Year and new Board Members - establishing and re-establishing relationships, job duties, functions and trust with each other.

The outgoing members are the ones I'll miss! It is nice having Board Members that say "I'll take care of it" and don't have to give it second thought! It is always great to have the job done in a professional and timely manner. These people have gone beyond the "take care of it." They have given it their very best! I will sorely miss Bob Costa on the board. Bob has served the membership since 1996 as Director, Newsletter Editor, Institute Chairman, GCSAA representative, Vice President, President, and 65th Anniversary Chairman. One of the most important jobs of an organizational leader is providing direction. The duties and functions of the board are to "set the course" for the organization. Bob has provided that direction for GCSANC. I look forward to his contin-



Barb Mikel - GCSANC
Executive Secretary

uation of work on the Newsletter Committee. He is helping transition our "Thru the Green" publication into a revamped bi-monthly

publication setting the pace in California chapter publications.

I receive many calls asking, "Can I put that on my credit card?" The answer is yes, you can. We provide credit card options on monthly meeting reservations and dues renewals. All of our credit card processing is now done online. We do not have a "swipe machine" with all the paper processing to the bank. You need to simply provide the information to the office with the reservation form or with the renewal processing form. If you would like to keep a credit card processing form on hand, send an e-mail or fax the request then you can have the blank form in the office. Remember, receipts are provided for monthly meetings with your registration information. I need to have the method of payment as you make the reservation to properly process the receipt.

As we continue into the online world, look for job notices to be provided via e-mail or fax in the near future. The discussion has taken place in the past and the board will more than likely make this the distribution method in the coming year. Mailing costs and administrative overhead are greatly reduced with electronic transmission. Even fax transmissions are less costly than US mail.

Thanks For Your Donations California GCSA!

2003 California Hospitality Suite CNN Center, Atlanta, GA

February 13, 2003 • 6:00 - 10:00 pm

The California GCSA is planning the 2003 Hospitality Suite in Atlanta, GA. The Hospitality Suite will be held at the CNN Center Atrium Terrace. We are offering a Sponsorship Program for companies that would like to support this event.



The crew members at Del Monte Golf Course in Monterey, CA, take a quick break from the assignment of the day for a photo on the 12th hole. (kneeling below) **Tony Ramos** (standing left to right) GCSANC Member **Robert Yeo**, **Juan Vasquez**, **Robert Esposito**, and GCSANC Member **Kim Trainor**



Representing the GCSANC at a recent PGA Meeting in Stockton, CA, are chapter members **Bruce Olson** and **Jim Irvine** both of Emerald Hills Golf Course in Redwood City, CA. Both gentlemen are committed to strengthening relationships with other allied golf associations. **Jim**, who chairs the Education Committee for the GCSANC, has been working diligently to uncover new education opportunities for chapter members. Supporting Jim's efforts, is **Bruce**, who is not only a Class A Member of the GCSANC, but also a member of the Club Managers Association and the PGA of America.



OVERSEEDING... *Boon or Curse?* The Rest Of The Story

by David L. Wienecke
USGA Green Section agronomist

Overseeding a golf course to permit green winter playing conditions has always been controversial. It is expensive, time consuming, and reduces summer bermudagrass quality. I would like to explore why it is done and examine the consequences of not overseeding.

The FORE Magazine article Sep/Oct 2002 established the basic issues of this topic. The following will update the information presented in that article.

The following are provided as an overview of the controversy behind overseeding:

- Overseeding of warm season grasses using cool-season grasses is done to provide a green winter playing surface when the warm season grass is dormant.
- Historically overseeding is done in the fall beginning with seedbed preparation by scalping the grass, vertical mowing, or brushing to provide a soil contact for the seed. This preparation process has been found to result in a degradation of the bermudagrass in summer periods.
- Traditional overseeding also depends on course closures of one to six weeks to allow the overseeded grass to germinate and establish for winter play.
- High levels of winter golf play usually result in additional degradation of summer bermudagrass health and play quality due to high traffic levels impacting the dormant grass from golf cart and related golfing play.

• If overseeding is done, the only way to keep high quality summer bermudagrass play quality is by replanting the weakened bermudagrass spots by sprigging, sodding, or seeding in the summer months. Core aeration, sand topdressing, and vertical mowing are also needed to resolve soil compaction problems caused by winter traffic, and to restore growing conditions needed for healthy bermudagrass.

If there are so many negatives why does anyone overseed? The main reason overseeding is done is because golfers want a green playing surface in winter. Golfers complain about having to play on "dirt" in winter. Resorts need winter play in the Southwestern United States since much of their revenue comes from winter play.

Also from years of overseeding we have found that you still need to maintain the golf course with cultivation such as core aeration, sand topdressing, and vertical mowing for turfgrass health whether overseeding is done or not. Weed management for grassy and broadleaf weeds is still needed.

Successful high quality golf courses inevitably must make the decision whether or not to overseed. Universities and golf courses throughout the Southern United States have been experimenting with ways to minimize the problems of new technologies for overseeding and optimize the benefits.

Since the Sep/Oct 2002 article, discussions and evaluations of overseeding done at two golf courses in San Diego County, CA, a golf course in Las Vegas, NV, and a golf course in Bakersfield, CA has been done. The new technology is the Turf Solutions Dry Spray Applicator™. The Turf Solutions Dry Spray Applicator™ is a machine that blows the seed out using a high-pressure pump and is designed to align the seeds into a vertical orientation as it is applied to the turf. This machine has been used throughout the Southeastern United States, in Texas, and now in Southern California.

Benefits of this technology found in other parts of the country include:

- A very precise calibration and application of the machine eliminating seed wastage and problems

caused by irregular ground and wind during seeding. $\frac{1}{3}$ less seed is needed due to this precision.

• Elimination of seedbed preparation such as scalping, vertical mowing, or brushing due to the high-pressure blower seed application. Following seed application, all seed was deposited at the crown level in common bermudagrass. Seed did not penetrate the canopy when applied to hybrid bermudagrass however.

• Elimination of course closure or special increased irrigation. Play continued during the overseeding process and no change from normal irrigation was required.

Conclusions from these new procedures are listed below:

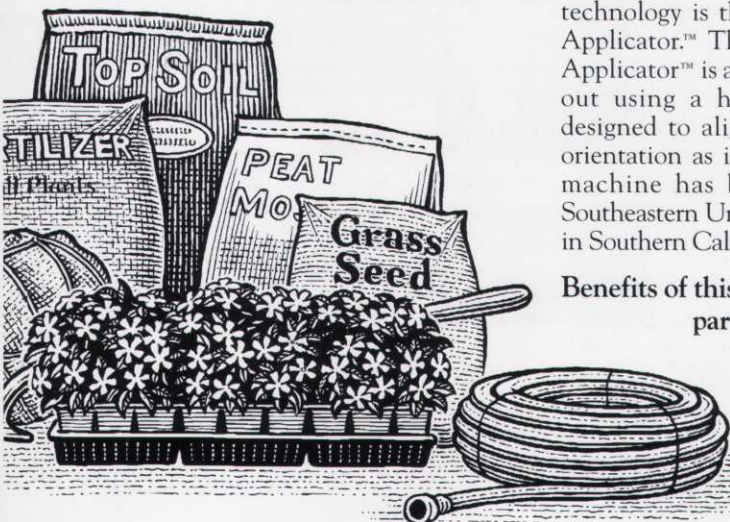
• As suspected, traffic does negatively impact seed germination and establishment. At one golf course in Southern California, two bermudagrass fairways were closed to golf cart traffic for six weeks after overseeding, while two other fairways were not closed to golf cart traffic. The two closed fairways had established grass two weeks earlier than the fairways subjected to unlimited cart traffic.

• Overseeding of all tees has produced an outstanding playing surface. No course closure other than the two fairways closed to traffic occurred. No change in irrigation practices was necessary, no seedbed preparation was required, and the overseeded tee and fairway playing conditions are fantastic.

• Since the machine is not able to penetrate the dense hybrid bermudagrass, dragging of seed following machine application will be needed to improve seed penetration in future. No dragging of seed is needed in common bermudagrass areas.

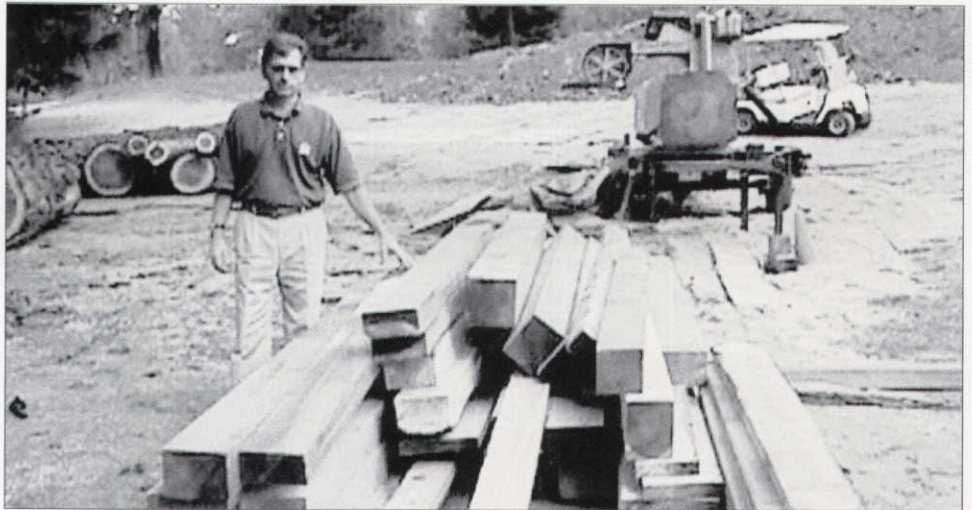
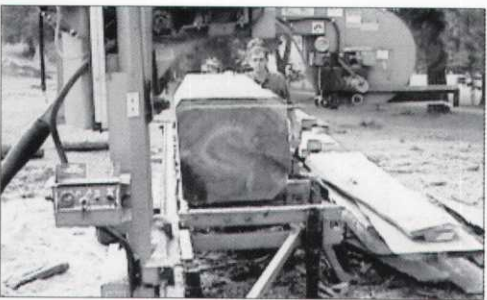
• Continued assessment is needed to determine if there will be any negative impacts to the bermudagrass from the overseeding process. This golf course has not been overseeded for the past three years and has very good quality bermudagrass.

These new technologies do show promise for reducing the negative impacts of overseeding. At present we still have no one grass that is capable of giving us 12 months of high playing quality.





What Is The BUZZ Going On Over At Sequoyah C.C.?



This is no lumberjack! It's Terry Grasso, Superintendent at Sequoyah C.C. in the Oakland Hills. Terry, knows a giant resource when he sees one. *The buzz is...* Sequoyah's is using a milling contractor to defer disposal costs and to help recycle the wood to benefit the environment.

When Every Square Inch Counts...



Andersons™
GOLF PRODUCTS

Particles Per Square Inch Calculator

	Size Guide Number (SGN)						
	100	125	150	175	215	240	
100	7.2	3.7	2.1	1.3	0.7	0.6	
125	9.0	4.6	2.7	1.7	0.9	0.7	
Pounds	150	10.8	5.5	3.2	2.0	1.1	0.8
Product	175	12.6	6.5	3.7	2.4	1.3	0.9
Per Acre	200	14.4	7.4	4.3	2.7	1.5	1.0
	225	16.2	8.3	5.0	3.0	1.6	1.2
	250	18.0	9.2	5.3	3.3	1.8	1.3

Contact Your Andersons Territory Manager

Bob Miller
1-800-456-6401



The Best People,
The Best Products,
The Best Service!

For Quality Turf Care

- Plant Protection Chemicals
- Full Seed Line
- Custom Liquid Fertilizers
- Custom Dry Fertilizer Blends
- Aquatics
- Turf Monitoring Program
- Andersons Golf Products
- Agri-Flo Soil Treatment

David Murphy

Turf and Ornamental P.C.A.

Office: (800) 726-5873 Cell: (831) 594-6008



Weather Service Says El Niño To Continue

Wetter than average conditions are expected along much of the southern tier of the United States this winter, as moderate El Niño conditions continue in the Pacific Ocean, according to the National Weather Service Climate Prediction Center.

Meteorologist John Janowiak recently told a group of California emergency managers that the upcoming winter will bring above-normal precipitation to the southern half of California and Nevada, and warmer temperatures over much of the north-central states.

"El Niño has positive impacts for the country as a whole, with warmer winters in the north-central states and relatively abundant precipitation in the semi-arid areas of the Southwest," said Janowiak. "Based on recent trends, we expect the waters in the eastern equatorial Pacific to continue to warm, and mature El Niño conditions will prevail from December through February 2003."

The winter 2002-2003 outlook predicts dry conditions in states in the Ohio Valley and northern Rockies, wet conditions, with

increased storm activity across the south, and warmer than average conditions in the north, including southern and southeastern Alaska. Elizabeth Morse, meteorologist in charge of the Weather Service forecast office in Sacramento, said, "Everything from agriculture to summer drinking water is affected by how wet the winter storms are and where they go. Since we can't control the storms, we need to prepare and react sensibly."

At a briefing in Texas, Bill Proenza, southern region director, said, "The present El Niño is expected to bring more snow to the Southern Plains, Texas Panhandle and the mountains of the Southwest this winter. The likelihood of above-normal precipitation is welcomed because it will help to alleviate the severe drought conditions and wildfire threat that has plagued the southwestern United States in recent months."

For more information online, visit:

http://www.cpc.ncep.noaa.gov/products/analysis_monitoring/enso_advisory

3 GCSAA Seminars Are Here!

Crowne Plaza Pleasanton
Pleasanton, Calif.

Management of Localized Dry Spots and Water Repellent Soils

Tuesday, Jan. 7, 2003
8 a.m. - 12 p.m.

0.35 CEUs

Managing Turfgrass Root Systems

Tuesday, Jan. 7, 2003
1 p.m. - 5 p.m.

0.35 CEUs

Fundamentals of Turfgrass Management I

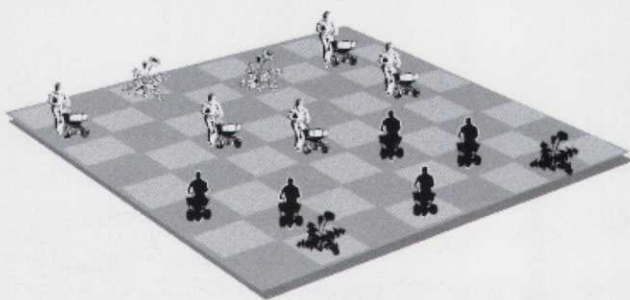
Tuesday, Jan. 8, 2003
8 a.m. - 5 p.m.

0.7 CEUs

These GCSAA Seminars are brought to you by the GCSA of NORTHERN CALIFORNIA and presented in partnership with Jacobsen, Turf Commercial and Specialty Equipment, a Textron Company.

BEST®

Turf care should not be as complicated as a game of chess...



BEST® Fertilizer's state-of-the-art UMAXX™ technology keeps your turf in check by:

- Prolonging nitrogen availability in soil
- Providing optimum long-lasting color without excess growth
- Reducing the cost per unit of nitrogen
- Protecting against nitrogen loss from volatility, leaching and denitrification



Simplot

Call or visit our Web site to locate the BEST distributor nearest you:

Phone: (800) 992-6066
Web site: www.bestfertilizer.com

UMAXX is a trademark of AgriStar International, L.L.C.
© 2002 J. R. Simplot Company. All rights reserved.

DELTA BLUEGRASS COMPANY

STOCKTON, CALIFORNIA

QUALITY GOLF COURSE SOD BLENDS AND SERVICES

FEATURING BLUE-RYE, RYE-BLUE, AND 100% RYE GRASSES; BENT GRASSES AND HYBRID BERMUDAS.

OFFERING HYBRID BERMUDA ROW PLANTING, DEEP TINE AERATION, SLIT SEED, GREEN AND FAIRWAY TOP DRESSING.

FRED HANKER

888-818-8873 OR 800-637-8873

C-27 752734

Delivering value...

... the foundation on which Target has built its reputation. For over 30 years Target has brought value to golf course superintendents in the form of:

- Quality Products
- Regularly Scheduled Deliveries
- Informative Training Programs & Seminars

1155 Mabury Road, San Jose, CA 95133-1029

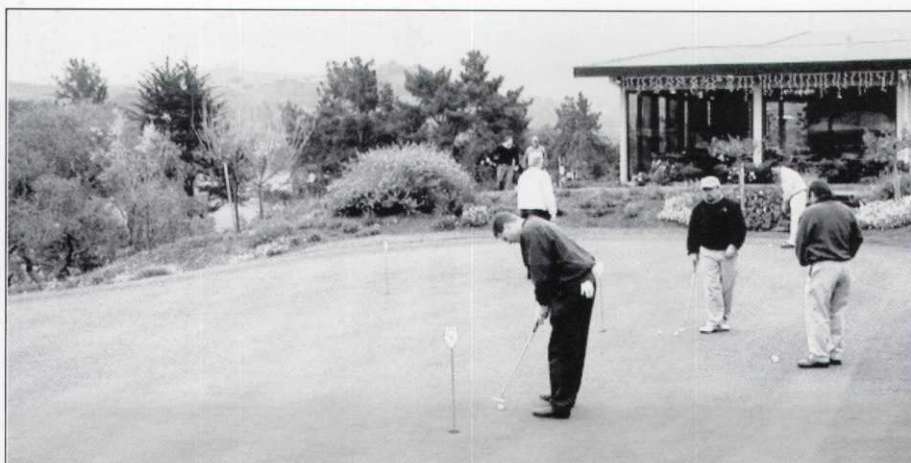
800-767-0719 · 408-293-6032 · Fax: 408-287-2004

www.target-specialty.com





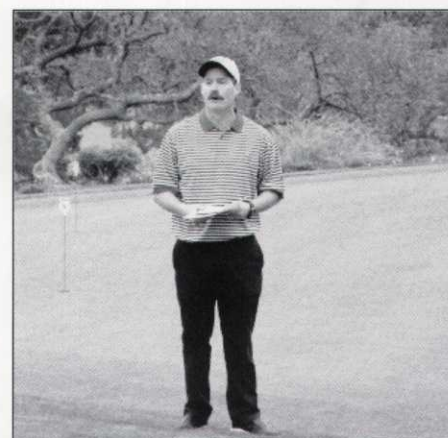
Ray Story and others warming up at the practice green.



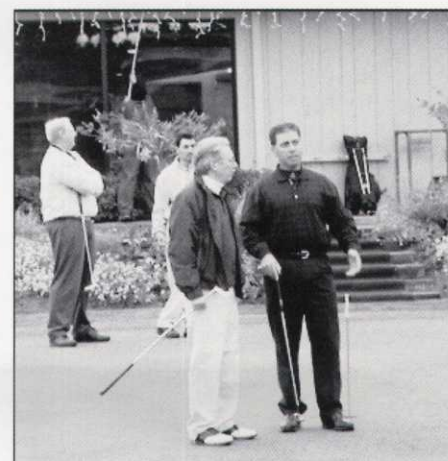
Players getting a feel for the slick greens at Corral de Tierra.

Corral de Tierra COUNTRY CLUB

Golf Event And Tournament



Host P.J. Spellman, addresses the golf participants.



Mike Ginelli and Mike Sousa discussing strategy.

Golf Event Tournament Scoreboard

[Par 72]

Superintendent Flight

Low Gross: David Hayes	74
Low Net: Mike Leach	70
Ross Brownlie	70
Jason Green	71

Affiliate Flight

Low Gross Rex Gentry	78
Low Net: Steve Franzen	65
Mitch Frasier	67

Ladies

Low Gross: Yolanda Pelser	81
----------------------------------	----

Closest to the Pin

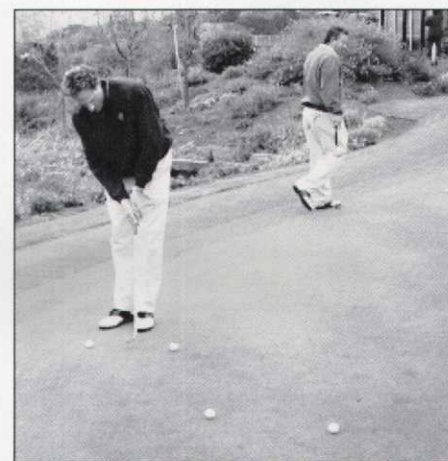
#4 Mike McCullough	10'2"
#4 PJ Spellman	2'10"
#8 Jeff Arneson	6"
#11 Alasdair Brownlie	8"
#17 Mike Leach	6'4"

Long Drive

Cindy Florez

Highest Overall Score

Jennifer Babbit	122
-----------------	-----



Mike Hill sneaks in a few quick practice puts.



2002 gcsanc christmas party

Casino Night

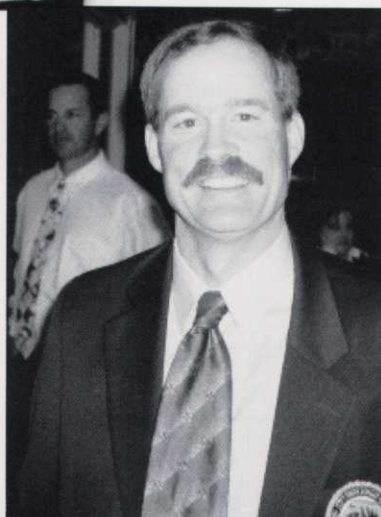


Great fun and games were had by all who attended this festive event in Monterey. An evening of socializing with colleagues, sampling delicious finger foods and sharing in spirits, what could be better? Gambling on the GCSANC perhaps?! There was an array of wonderful gifts to entice even the amateur into taking a chance on winning during three raffles throughout the evening.

Mike and Chris Garvale (left) They just radiate with Christmas cheer, don't they?



Mike Leach receiving 'The Lary Lloyd' presented by Andy Slack



P.J. Spellman II our host for the holiday golf event and his sunny smile!



Leslie and Jimmy Wheaton looking festive.



The Barbers checking out the prize table.



... .. TEQUILA!



CLASSIFIED DIRECTORY

EQUIPMENT

Napa High School IS IN DESPERATE NEED for a mower for their Varsity Baseball Complex.

They are seeking a donated mower in good working condition to cut the outfields and sidelines.

Example: John Deere 2653 - Toro 216 - National Triplex. Also a Sand Pro unit is needed to groom the infield.

If anyone can help, please contact **MIKE WILLIS** toll free at 1-877-253-8225

For Sale

Raven/Broyhill - 100 gal spray system with Honda engine \$1000.00 OBO!

Toro Verticut units with new carbide tip blades. Set of 3 \$750.00 OBO!

John Deere Sweeper - Model \$152 \$750.00 OBO!

Toro 3200 cutting units like new set of 3 \$1000.00 OBO!

E-Z-Go gas golf carts in running condition (2) \$250.00 each OBO!

Contact: Terry Grasso
Sequoyah CC, 510-632-2903

For Sale

1992 Toro 5100 fairway unit

1994 Ransome rotary deck rough unit

1992 Toro 216 bank mower

1992 Smithco Super rake

600 47/51 rainbird impacts w/ swing joints

Best offer on all nick@scvcc.com or (408)239-5710

THANK YOU To Our Holiday Golf And Party Sponsors

Corral De Tierra Country Club
Farmload Distributors
Turf Star
Par Consultants Inc.
TMT Enterprises Inc.
D.H.R. Construction Inc.
JR Simplot
H.V. Carter Co.
Russell D. Mitchell & Associates
West Coast Turf
Arnaz Tree Movers
La Selva Constants Inc.
Western Farm Service
Hydro Engineering
Target Specialty Products
Tom Jackson
United Horticultural Supply
Spot Water Management
Ciardellas's Garden Supply
R.V. Cloud



CUSTOM DESIGNED METAL BUILDINGS

Attractive ■ Cost Efficient ■ Durable

Green Hills Country Club Turf Care Facility



**Ideal For All Your
Turf Care and Clubhouse Facility Needs**

*Star Buildings can be custom
designed for a wide range of uses:*

- Clubhouses
- Golf Cart Barns
- Tennis Court Buildings
- Pro Shops
- Restaurant Buildings
- Maintenance Facilities
- Swimming Pool Buildings
- Weather Protection Canopies
- Hazardous Material Storage
- Wash Down Facilities

DBD Structures

Provides Complete

**Management, General Construction
and Design Services**

- Preconstruction Planning
- Architectural Design
- Engineering Design
- Sitework & Landscaping
- Building Construction
- Interior Improvements

*To Find Out How Easy it is to put DBD Structures'
"Professionalism, Integrity and Attention to Detail"
to Work for You, Call or e-mail:*

D·B·D DESIGN
STRUCTURES BUILD
DEVELOPMENT

1525 Evans Avenue, San Francisco, CA 94124 110 N1 8577585

Brian Gaunce or Jim Aude
(ext. 123) (ext. 130)

415-970-0201

e-mail: star@dbdstructures.com