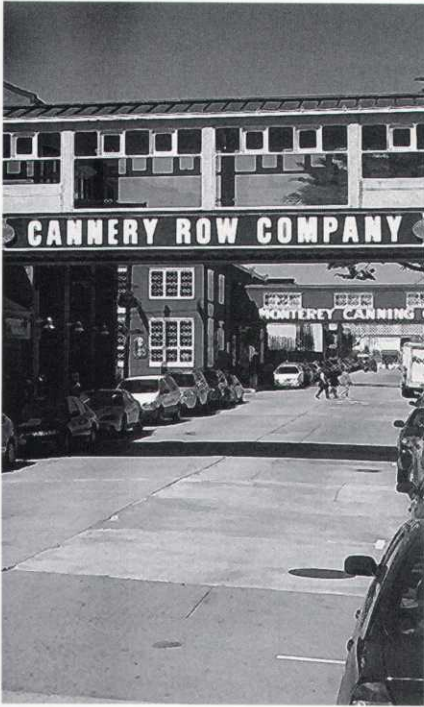


ThruTheGreen

The Golf Course Superintendent's Association of Northern California



CONTENTS

STRICTLY BUSINESS

- 3 President's Message
- 3 Boardroom Briefs
- 4 Office Notes
- 4 Board of Directors

MEMBERS ONLY

- 6 Naumann's NorCal News
- 6 The Key To Tree Planting
- 6 New Membership

ALLIED ASSOCIATIONS

- 7 USDA - Winter Weeds
- 7 State and National News

GALLERY

- 8 NCGA/USGA Education Photos
- 9 In The News Photos

CALENDAR

- 10 Event Calendar
- 11 Education

IN THE NEWS

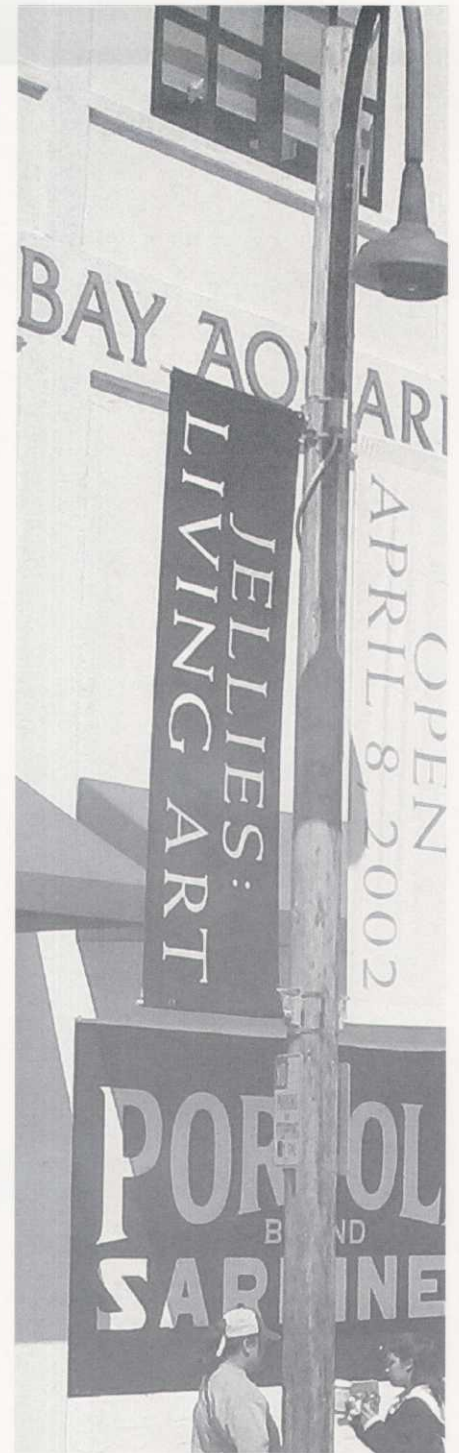
- 13 DPR Announces Restrictions On Compost
- 14 Superintendent's Profile Daniel Moak

MARKETPLACE

- 15 Business Directory

FEATURES

- 5 Bayonet & Black Horse Host Supt. Profiles
- 12 Tim Powers & Crystal Springs Receive ELG Award



ThruTheGreen
Published bi-monthly by the
Golf Course Superintendent's
Association of Northern California

EDITOR
Kenneth D. Williams, CGCS

PUBLISHER
Patricia Hill
Hill Design, Advertising Agency

MEDIA
Emmy Moore Minister
GCSANC, Public Relations Consulting

ADVERTISING SUPPORT
Barbara Mikel
GCSANC, Association Manager

2003 GCSANC Board of Directors



Board Meeting at Orinda CC
Wednesday, April 9, 2003

[L to R] Greg Fernald, Bob Lopic, Jim Irvine, Barb Mikel, Andy Slack, Vince Keats, and P.J. Spellman, II gather at Orinda CC

Board Room Briefs

By Vince Keats

April 12, 2003

Education / Institute

The Board is considering a return to the Santa Cruz area for the Institute in 2003. Education and hotel locations discussed were Boulder Creek and Scott's Valley. Potential golf site: Pasatiempo. Possible courses for the GCSAA / CGSANC Regional Seminar 2004: Management Strategies for Turfgrass taught by Joe Vargas; Management Efficiency with Bruce Williams and Roger Stewart.

National

Pat Finlen reported on the unsuccessful election bid by Gary Carls for GCSAA Board of Directors. Gary has stated that he will run again in 2004. A motion to help Gary with his election expenses from 2003 in the amount of \$300 was approved.

GCSANC

A motion was made to raise the application fee for membership by \$25. Motion was approved.

A motion was made to send all job notices to the membership by e-mail starting July 1st. In the event email is not available to a member, the notice may be sent by fax. Motion was approved.



PRESIDENT'S MESSAGE

Bob Lopic, CGCS
Orinda Country Club

Even though spring is in the air and our busy season is approaching, I hope you will take time to notice our schedule of activities.

The Annual California State GCSA meeting is ours to host this year and we have scheduled terrific venues for golf, education and relaxation. The DoubleTree Hotel was chosen as headquarters to give great access to all that downtown Monterey has to offer. Sunday, May 18th there is a hosted reception at the Monterey Bay Aquarium with free shuttle service from both the Double Tree and Monterey Bay Inn. Monday, we have a State Association update followed by a full day of educational opportunities. CEUs have been applied for. Finally on Tuesday, we finish with golf and refreshments at the beautiful and challenging Bayonet Course at Ford Ord.

This event has been planned to give you a chance to learn something and relax with family or friends at a great site. Please mark your calendars, check your brochures for details and make reservations early. I look forward to seeing you there.

I would like to take this opportunity to thank all of the people who have stepped forward to sponsor our events. I would ask you to look at the sponsor boards and thank these people in person or by considering them when you make your purchasing decisions.

Congratulations to the Newsletter committee, Trish Hill, Ken Williams, Barb Mikel, Andy Slack and Bob Costa for formatting our new magazine. We now have a vehicle to distribute news and commercial ventures that we can be proud of. Please take advantage of this opportunity by submitting content to Ken or advertisements to Barb.

Finally, as we enter the busy heart of our season, take time to keep some balance in your life. Remembering those we love and those who care for us is an important part of remaining healthy. Have a great season.



OFFICE NOTES

Barb Mikel,
GCSANC Executive Secretary

It is April already, wow? Hope all your aerification projects have been successfully completed. I awoke this morning to snow on the spring flowers at 2600 ft in El Dorado County.

It is always gratifying to see things come to fruition. I have watched the California Golf Course Superintendent's Association Economic Impact Study evolve from a "wish" to a reality. This effort, spearheaded by a volunteer group of Northern California superintendents, is a project for the books. Golf course owners, professional managers, & superintendents joined forces to accomplish something for the industry, despite delays or the ultimate disposition of those involved. This was an accomplishment independent of the results, (which are impressive) for the cooperative efforts over time. Congratulations to all involved!

April for me, means a trip to Kansas, my third time visiting the GCSAA Headquarters in Lawrence. I come away from each visit with more information and an evolving appreciation of the benefits offered to professional development by your national association. It's also a good opportunity for a "reality check" with other association managers.

The first three months of 2003 saw a job notice mailed to 496 members each week. That is a LOT of postage and printing. So out of that comes a "new look" for job notices. Beginning in July, the notices will only be faxed or e-mailed to members. This will get the notice out quickly and at less cost, while continuing to provide members with this important service. Before the change takes place, we will mail a verification postcard so you can make changes to your fax number or e-mail address.

Membership changes can be accomplished rather quickly by using the renewal notices each year. Those of you who noted position changes on your renewal forms will be reviewed and changed by the membership committee if appropriate. During the year, you can also make classification changes with a regular membership application form mailed or faxed to the office.

Also, look for changes to the GCSANC Membership Card. Research is ongoing for a new look card at a reduced cost. We have utilized renewal stickers for a number of years and it is finally time to revamp the card. Just a note, the Bylaws specifically require a membership card. Suggestions on this matter are appreciated and welcome at gcsanc@e-easi.net

2003 North American

Bird Watching

Open May 10th



We are pleased to invite everyone to participate in the sixth annual North American Birdwatching Open on International Migratory Bird Day, Saturday, May 10, 2003. Over the course of 24-hours, participants identify as many different birds as they can on their properties. The data we gather provide useful information about bird species commonly found on different types of properties. Participants are encouraged to invite someone experienced in bird identification to help, if needed, to contribute to a more accurate count. The event is a fun and easy way to see what birds are on your course during this "peak" time of year and generate data about the diversity of birds on managed landscapes.

This year we are opening the event to members of the Audubon Cooperative Sanctuary Program and non-members alike.

To register for the event or get more information, visit:

<http://www.audubonintl.org/projects/birdwatchopen/birdopen.htm>
or contact Jennifer Batza at (518) 767-9051, extension 12 or jbatza@audubonintl.org.



VALLEY CREST TREE COMPANY

The Tree Growing & Tree Moving Company

- 800 acres in northern and southern California
- 15 gallon thru 72" box inventory
- Certified arborists on staff
- Mature specimen trees and palms
- Large inventory on hand
- Tree relocation and preservation

Steve Jones
Sales Representative
smjones@vctree.com

8501 Calaveras Road
Sunol, CA 94586
phone 925. 862. 2485
fax 925. 862. 2935
www.vctree.com

Bayonet & Black Horse



Thomas M. Bevan

Bayonet GC

PROFILE

Position: Golf Course Superintendent

Years in the Golf Business: 13

Previous Employment:

Pebble Beach GL 1990-93; Glen Oaks CC in Des Moines, IA 1993-96; Carmel Valley Ranch 1996-98

Education:

BS, Iowa St. University,

Emphasis: Turfgrass Management

GCSANC Work or Interests:

Like to get involved at the committee level, or as a Director on the Board

Other Organizations:

Board Member – Las Palmas Homeowners Assn.

Family: Wife Holly, Son Drew

Interests Outside of Golf:

Sightseeing – Sunday drives, Gardening, Happiness being a Father

Favorite Vacation: Lake Tahoe – Graeagle or Plumas Eureka State Park

Favorite Course to Play:

I don't play too often, so I'd have to say our courses here in Seaside

Course You'd Like to Visit:

The Old Course at St. Andrews

Strangest Thing You've Witnessed

On The Golf Course:

Seeing a Michael Jackson video being filmed on the 7th tee at Pebble Beach GL

What You'd Be Doing If You Weren't Involved With Golf:

I'd probably be an Airline Pilot

Brian C. Netz

Black Horse GC

PROFILE

Position: Golf Course Superintendent

Years in the Golf Business: 16

Previous Employment:

Assistant Superintendent, Richmond CC

Education:

BS in Horticulture, Univ. of Minnesota St. Paul

GCSANC Work or Interests:

None currently

Other Organizations:

GCSAA, Minnesota GCSA

Family: Wife Heidi

Interests Outside of Golf:

Motorcycles and Target shooting

Favorite Vacation: Spain & Greece

Favorite Course to Play:

Interlachen CC back in Minneapolis

Course You'd Like to Visit:

Cypress Point

Strangest Thing You've Witnessed On The Golf Course:

A golf course employee driving his mower into a lake, then having to swim after the baskets floating away

What You'd Be Doing If You Weren't Involved With Golf:

Building Motorcycles

One Of
Monterey's
Jewels In The
Rough.

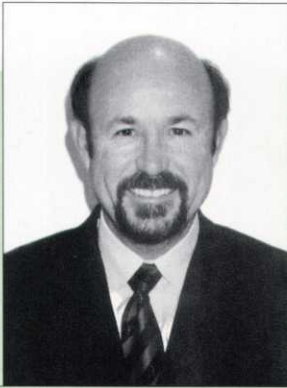
Bayonet & Black
Horse Golf
Course sets the
tone for a
refreshing change
in Golf Course
Architecture.



Seaside at Monterey Bay, California

For Directions Visit Us:

www.bayonetblackhorse.com/Map/



Don Naumann
Sierra Pacific Turf Supply

NAUMANN'S NORCAL NEWS

Thomas Bastis has left Moraga Country Club to take the position vacated by **Roger Robarge, CGCS** at California Golf Club in South San Francisco....

After 33 years of service to the Richmond Country Club (the last 14 years as Supt,.) **Jorge Bartolomeu** is retiring. During his career he helped install a new irrigation system, rebuilt tees, renovated fairways and most recently re-grassed greens. Good luck on your retirement, Jorge!....

Bob Dalton has left Visalia Country Club and has accepted the Superintendent position at Sherwood Forest Country Club in Sanger. Replacing Bob at Visalia CC is **Todd Andreasen**. Todd was one of the Assistant Supt at Bel Aire CC prior to him moving. Todd's father, **Alan Andreasen, CGCS** is the Superintendent at Los Lagos and Rancho Del Pueblo Golf Courses in San Jose....



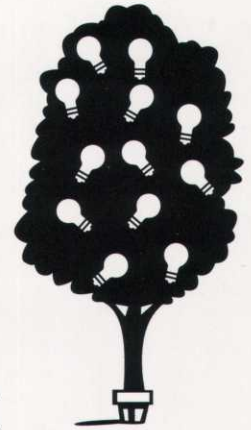
The "Key" to Tree Planting

By Emmy Moore Ministe

Rick Key, CGCS, had an innovative idea that is not only adding beauty to his course at Salinas Fairways GC, but also honoring others at the very same time. With the loss of numerous Monterey Pines to the devastating Pine Pitch Canker disease, Rick along with Bruce Lewis, Director of Golf Operations, thought it would be a great idea to start a tree-planting program to replace the diseased trees.

With that in mind, the City of Salinas set up a fund to replace the lost trees. They purchased new trees and planted them at a nursery located on the course where Rick and his staff nurture them. Then, for a \$50.00 donation, folks within the Salinas community can have a tree from the nursery planted on the course in memory of a friend or loved one. The names of the honoree and donor are then listed on a plaque prominently displayed in the clubhouse.

According to Rick, this tree planting program was not meant to be a fundraiser, but a way to offset the loss of trees while honoring others. "It is good for our course, it enhances the environment, and it is great for our community," states Rick. Due to the project's success, the City of Salinas plans to make this an ongoing program at Salinas Fairways Golf Course.



The Golf Course Superintendents Association of Northern California

Membership

NEW MEMBERSHIP

Greg Amsler	Assistant Superintendent Cypress Point	Class C
Guy DiJulio	Assistant Superintendent San Jose CC	Class C
Juan Garcia	O&J Construction	Affiliate
Marty Giovanetti	Assured Aggregates	Affiliate
Al Glaser	Aramak Uniform Co.	Affiliate
Joshua Goldman	Assistant Superintendent, Santa Teresa GC	Class C
Travis Hogan	NCGA Intern	Associate
Mike McCone	Mechanic, Orinda CC	Associate
Edward Ott	President, Colony Landscape	Affiliate
Sharon Parker	Lesco, Inc.	Affiliate
Jonh Parodi	Peterson Tractor	Affiliate
Clifford Wilson	PGDOGS, LLC.	Affiliate
Timothy Youngberg	Assistant Supt, The Bridges GC	Class C

RECLASSIFICATION

Tom Bevan	Superintendent Bayonet GC	Class B to Class A
Thomas Huesgen Jr.	Superintendent Pebble Beach G.L.	Class B to Class A
Richard Laura	Superintendent Burlingame CC	Class B to Class A
Mike Seneca	Superintendent, Orinda CC	Class B to Class A
Gil Stiles	Superintendent, Santa Rosa GC	Class B to Class A
Ken Wolford	Superintendent Lake Wildwood GC	Class B to Class A

Winter WEEDS

By Pat Gross

Recent rains in much of the Southwest have caused the rapid growth of winter weeds including chickweed, brass buttons, swinecress, and *Poa annua*. Clumps of volunteer perennial ryegrass and *Poa annua* in dormant bermudagrass can be especially troublesome, contributing to inconsistent fairway conditions during this time of year. Reducing the fairway cutting height and increasing mowing frequency can help lessen the impact of the clumps until bermudagrass resumes active growth in the coming weeks. Application of a broadleaf herbicide should be delayed until bermudagrass resumes active growth. Although temperatures have been bouncing back and forth from warm to cool, it is best to wait for a more consistent pattern of warm weather so you can be sure bermudagrass has initiated steady growth and will not be damaged by broadleaf herbicides.

A couple of broadleaf weeds are becoming more prominent in Northern California and parts of Southern California; swinecress (*Coronopsis didymus*) and Southern brass buttons (*Cotula australis*). Both have a prostrate growth habit with finely divided leaves like a carrot top. These two weeds are actively growing during the late winter and early spring and can be observed throughout the course including greens. Swinecress can be distinguished by the flowers, which are small green pods, the skunk-like smell and the distinct tap root. Southern brass buttons has a small daisy-like flower, no bad smell, and a fibrous root system. These weeds are relatively easy to control in higher cut grass on the tees, fairways and rough with commonly used broadleaf herbicides. *Poa annua* greens are more susceptible to herbicide injury, and some courses choose to handpick or replace infestations with sod plugs from the putting green nursery to avoid damage.



Turf Diseases

Pink snow mold (*Microdochium nivale*) continues to infect *Poa annua* putting greens in many areas of the Southwest. Damage is more prominent on shaded areas of greens. Any efforts to thin surrounding trees and improve sunlight will help dry the grass and reduce the damage caused by pink snow mold.

Aeration Programs

Many courses are experiencing worn, compacted turf conditions at this time, and superintendents are anxious to aerate in an effort to stimulate growth. Core aeration while temperatures are still cool can extend the time necessary for recovery. If aeration is absolutely necessary, less disruptive methods such as spiking, slicing, or water injection can be done as a temporary measure until the turf is growing strong enough to recover from coring.

USDA Develops Low-Cost Water Sampler

CGCSA Government Issues

The USDA's Agricultural Research Service says that small-scale water sampling may become less expensive, and thus possible in more locations, thanks to a compact sample collector designed by scientists.

The device collects samples of drainage or low-stream flows that can be analyzed for levels of nutrients, pesticides or fine sediment. It also provides total-flow estimates for given time periods. ARS agricultural engineer Robert Malone led development of the device when he was based at the ARS North Appalachian Experimental Watershed in Coshocton, Ohio.

The sample collector is small, useful in remote conditions, easy to maintain and easily constructed from readily obtainable materials. It collects about two percent of total flow at rates ranging from 0.01 to 3.2 gallons per hour.

Analysis of composite water samples is essential for tracking changes in chemical or sediment concentrations in surface water and groundwater. Costs, however, limit the number of sampling locations. Scientists say

that few current samplers can collect, at low cost, both drip flow and continuous-streaming flow from tile drains, large soil blocks and springs. Many are bulky units, not designed for drip flow, that require extensive circuitry and cost more than \$1,000. According to Malone, his sample collector can be built for \$20 to \$30, although some digging and construction will sometimes be needed for field use.

The sampler, in the form of a cube measuring roughly five inches on each side, works by directing percolating water droplets onto a rotating lid that contains a 0.16 inch-wide slot. The slot allows water to flow down into a collection container. The rotating lid is powered by a clock-type motor. The device should handle greater flow rates with minor modifications, according to Malone. It was designed by Malone, who now works at ARS' National Soil Tilth Laboratory in Ames, Iowa, and by hydraulic engineer James Bonta and soil biological technician Donald Lightell, both with ARS at Coshocton. The sample collector will eventually be presented to potential marketers.

NCGA/USGA Experts



David Weinecke
Turf Tips



Pat Gross
Env. Disaster Prep.



Denny Davenport
Addresses Group



Dr. Becky Westerdahl
Nematologist.



Barrie Coate
Arborist



Jim Cowan
Handicap System



Dr. Frank Wong
Plant Pathologist

Green Section Regional Program

March 17, 2003

Castlewood Country Club
Pleasanton, California

Superintendent Blake Swint and Castlewood CC were again hosts for this year's annual USGA/NCGA meeting.

The well attended meeting has become a fixture on the GCSANC schedule. It allows area superintendents to catch up on the latest trends in golf course management.



Metropolitan Golf Links

Field Workshop In April, 2003

"Metropolitan Golf Links will test all level of players and will become a championship-links that offers a great golf experience and spectacular views of the San Francisco Bay."

– Johnny Miller, World Golf Hall of Fame

Course Designers

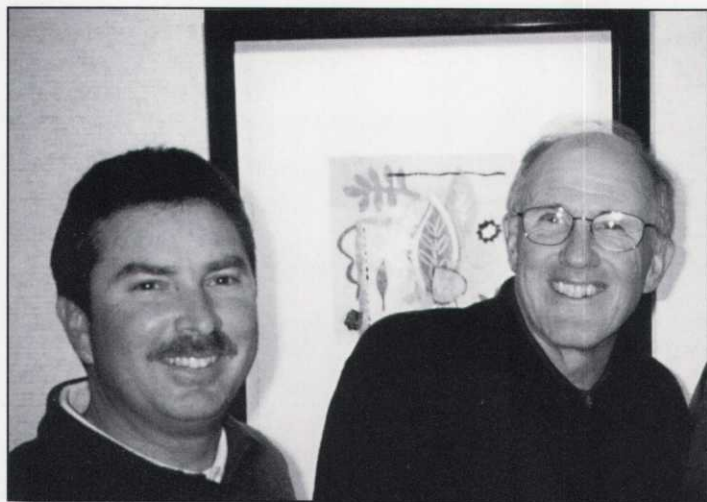
Fred Bliss, American Society of Golf Course Architects

The GCSANC visited Oakland's Metropolitan Golf Links for the Field Workshop in April.

The meeting was hosted by the UCCE and Course Co's Tom Isaak, Raymond Davies, CGCS and Gary Ingrahm, CGCS.

By Emmy Moore Ministe

Berg Helps GROW the Game!



[L to R] Head Golf Professional Tom Wade and his boss GCSANC Member Tim Berg of Blue Rock Springs Golf Course, are all smiles since their 36-hole facility is now the Northeast Bay Chapter site for the Executive Women's Golf Association.

Class A Superintendent...

and General Manager Tim Berg of Blue Rock Springs Golf Course (Vallejo, CA) is doing his part to help grow the game of golf. His facility is now home to one of the newest sites of the Executive Women's Golf Association (EWGA), the Northeast Bay Chapter which includes Alameda, Contra Costa, and Solano Counties.

Women business executives meet on a regular basis at Tim's facility to play the game of golf and learn more about the rules associated with the sport. Tim, his staff, and other industry leaders, have been asked to make presentations to the EWGA chapter members on a variety of golf related topics. The EWGA education program includes everything under sun, from etiquette and tips on proper ballmark repair to player development.

According to Berg, this EWGA chapter has kicked off with twenty-five members and is still growing. In an effort to bring new women to the game, a New Golfer Learning Series is also in place at Blue Rock Springs Golf Course. Congratulations to Tim Berg and his dedicated staff for volunteering their time to help others through the game of golf.

SUPS On The Job



Networking with a fellow GCSANC Member is a natural occurrence on the Monterey Peninsula. (Right) Tom Bevan, Golf Course Superintendent at Bayonet Golf Course (Seaside, CA) takes NCGA's Agronomist Mike McCullough on a tour of his facility.



They say a man's best friend is his dog, and GCSANC Member Chris Flynn at The Links at Spanish Bay (Pebble Beach, CA) will agree with that statement. Coby, a seven-month old American Bulldog joins Chris regularly at work on the nationally ranked course.

2003 Calendar

May 18, 19 & 20

**California State Meeting
Regional Education Program**

The Double Tree Hotel
Monterey

Reception 18th
Monterey Bay Aquarium
[7:00pm-11:00pm]

June 16

Superintendent Pro Invitational
Diablo Grande GC

July 28

Assist. Super. Meeting & Golf Tournament
La Rinconada CC

August 11

**Bert Graves Memorial
Scholarship Golf Tournament**
Eagle Ridge GC

Superintendent/Pro Event to Diablo Grande

Patterson, CA



This year's Superintendent Pro Tournament is heading to the beautiful Legends West course at Diablo Grande. The event is open to all GCSANC members and should be a great day of fun and camaraderie.

The Legends West course was designed by Hall of Fame players Gene Sarazen and Jack Nicklaus and opened in 1998. The highly rated course is currently listed on Golf Digest's Top 100 Public Courses. Host to the NorCal Open and numerous AJGA events, the par 72, 7112 yard layout should challenge even the best of players. Host superintendent Danny Moak is sure to have the course in excellent condition. Bring your sunscreen and come join the GCSANC and the NCPGA in a great event at Diablo Grande!

For Directions Visit:
[http://www.diablogrande.com/
locationmap.htm](http://www.diablogrande.com/locationmap.htm)



We're Here For You.

A Team of Professionals Serving Your Turfgrass Needs

Nick Biggi
916-765-6881
Central Valley

Ken Yelle
925-330-6080
North S.F. Bay

Sharon Parker
510-552-3001
South S.F. Bay

**Turf Seed • Fertilizers • Pesticides
Golf Course Accessories • Equipment**

LESCO®

www.lesco.com

LESCO is a registered trademark and Grow With Us is a trademark of LESCO Technologies, LLC