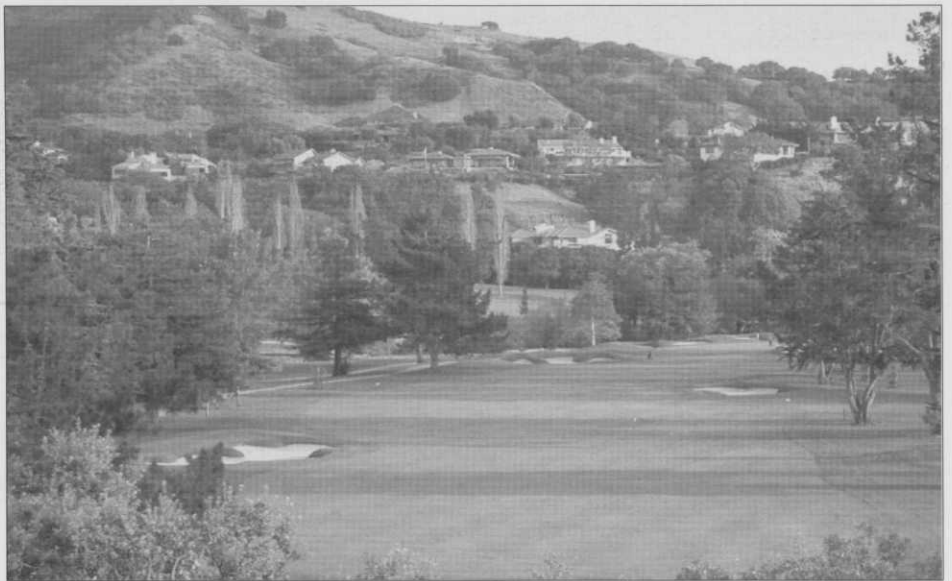




## P.J. SPELLMAN II and Corral de Tierra COUNTRY CLUB

By Ken Williams

Nestled in the foothills of John Steinbeck country and out of the foggy conditions of the coast, lies Salinas' first private golf course, Corral de Tierra C.C. Built in the late 1950's by architect Bob Baldock, Corral officially opened on St. Patrick's Day, 1959. The first Head Greenkeeper was Roy King. Currently the Superintendent is P.J. Spellman II, our host for the GCSANC Holiday Golf Event.



Nestled in the foothills lies Salinas's first private golf course, Corral de Tierra built in the 1950's.

construction. With no rain until Jan. 17th, the majority of the cut/fill process had been completed. All that was left was to transform the 4th hole from a benign 150 yard par three to a dramatic 200 yarder tucked around the newly excavated irrigation lake. This work was a change from the original plans and came as result of a membership vote on the 16th. The change has been viewed favorably as the hole has become one of Corral's signature holes. Although the tees will be up for the Holiday Tournament, it will still be very challenging.

Corral's Superintendent, brought him and his family back to the Monterey Peninsula. P.J. lives in Pacific Grove with his beautiful wife Tina and two sons, Orion & Jacob.

P.J. is currently serving as a Director for the GCSANC, where he has been a member since 1988. He hasn't yet decided whether or not to move up the ranks. For now, the challenges of work, committees and life in general are plenty for him to juggle.

*P.J. Spellman II, Happy Holidays everyone!  
I looks forward to seeing everyone at the event.*

P.J. started his "greenkeeping" career with the Pebble Beach Co. He spent six years with the company, his time being split at both Pebble Beach and Spyglass Hill.



Assistant; Rick Smith, Supt.; P.J. Spellman II with Mickey the goose dog and Assistant; Julio Cervantes

P.J. arrived at Corral in the fall of 1999. At that time, the back nine had been recently remodeled with new tees, bunkers and a new 16th green under the supervision of Rich Scholes and architect J. Michael Poellet. P.J.'s job was to continue the grow-in process, manage the salt build up in the old push up greens, get accustomed to his staff and prepare for Phase II of the renovation project; the front nine. This was a bit of a challenge for a guy who had never worked anywhere other than public or resort courses. In addition, P.J. found himself attending Green Committee meetings and reporting to the Board of Directors each month. Needless to say, it was a growing experience.

In January 2000, Phase II of the renovation project began with perfect conditions for

He moved on to Poppy Hills during the construction phase in 1985 and was promoted to the Assistant Superintendent position just before the course opened in June of '86. During his tenure at Poppy, he attained his Certification from Rutgers Professional Golf Turf Management School. The second year's tuition was paid by a scholarship received from GCSANC, of which he is very grateful.

In 1997 he and his family moved to the Sierra foothills where he started his first Superintendent position at Gold Creek Golf Resort (later renamed Apple Mt.). Although they loved living in the beautiful and majestic foothills, the opportunity for P.J. to become



One of Corral de Tierra Country Club's signature holes.

## President's Message

By Jeff Shafer

With the year rapidly fading away, and the summer stress of growing grass flushed away with that early storm, it is a great time to reflect on the year behind us.

Our association has continued to grow in strength and I extend deep gratitude to those involved. Your Board of Directors (BOD) set out a plan of action this year and they have far surpassed their goals. We saw committees run events from start to finish. Board meetings were moved to 7:00 am starts and everyone came prepared to move quickly and efficiently and therefore most meetings allowed us to be back at work by 11:00 am. Use of e-mail has allowed many topics to be discussed prior to Board Meetings allowing us to shorten the search for answers and resolutions. The budget and subsequent expenses were moved to the top of the priority list. Next year's budget talks already are in full swing and are zero based. SOP's of each event are being established so that future directors can catch up to speed must faster with the inner workings of the association. Participation amongst non-BOD members has increased to assist in all the activities and requirements.



Jeff Shafer  
The Course At Wente Vineyards

As president, I was blessed to have many dedicated individuals working toward our goals and I could spend a lifetime expressing my gratitude.

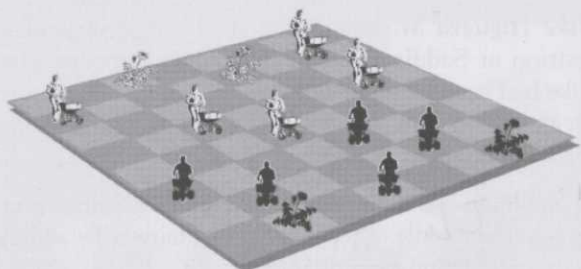
As well as this year has gone from an association standpoint; to reflect on the state of the golf industry for the year 2002 is just the opposite. Any statistical data from 2002, and the later part of 2001, will always be reviewed with an asterisk. I hope that 2003 can start an uphill trend of financial success so that your maintenance requirements are not scaled back even further than they have been.

*I wish all of you a safe and glorious holiday season. May this coming holiday and the next year be a period to think of others first. I pray that the world be safe for everyone.*

**Happy Holidays!**



Turf care should not be as complicated as a game of chess...



BEST® Fertilizer's state-of-the-art UMAXX™ technology keeps your turf in check by:

- Prolonging nitrogen availability in soil
- Providing optimum long-lasting color without excess growth
- Reducing the cost per unit of nitrogen
- Protecting against nitrogen loss from volatility, leaching and denitrification



Call or visit our Web site to locate the BEST distributor nearest you:

Phone: (800) 992-6066  
Web site: [www.bestfertilizer.com](http://www.bestfertilizer.com)

Simplot

UMAXX is a trademark of Agrotain International, LLC.  
© 2002 J. R. Simplot Company. All rights reserved.



## Aquatic Environments, Inc.

*Where land meets water...*

A full service aquatic maintenance and construction firm  
California general engineering license #: 754569

**EMORY HUNTER**

Sales Representative Products & Services

P.O. BOX 1406 ALAMO, CA 94507

BUS: (925) 314-0831 • FAX: (925) 314-0379 • HOME: (707) 447-5239

MOBILE: (510) 418-6395

[www.aquaticenvironmentsinc.com](http://www.aquaticenvironmentsinc.com)

## DELTA BLUEGRASS COMPANY

STOCKTON, CALIFORNIA

QUALITY GOLF COURSE SOD  
BLENDS AND SERVICES

FEATURING BLUE-RYE, RYE-BLUE, AND 100% RYE GRASSES;  
BENT GRASSES AND HYBRID BERMUDAS.

OFFERING HYBRID BERMUDA ROW PLANTING, DEEP  
TINE AERATION, SLIT SEED, GREEN AND FAIRWAY TOP DRESSING.

**FRED HANKER**

888-818-8873 OR 800-637-8873

C-27 752734



## Office Notes

By Barb Mikel

**Here's one for you:** "EPA Phase II storm water permitting requirements require operators of construction sites that disturb one acre or more of land to obtain a National Pollutant Discharge Elimination System (NPDES) permit prior to construction." (GCSAA GREENS & GRASSROOTS Nov. 13, 2002)

Did your turfgrass professor ever mention the above item? A National Pollutant Discharge Elimination Permits required for one acre or more of land. I don't know what the word disturb may mean, do you? I live on a two acre property. I wonder how many two-acre properties are in California. How many one acre or more fairways are on your course?

I certainly don't have any of those answers. I'll hopefully have the advice of a professional on my home property if I ever have to "disturb one acre or more" when constructing something. My point? You have the obligation as a professional to maintain standards not in existence when most of you began your career in turfgrass maintenance. Each day brings added responsibilities for items you may or may not



Barb Mikel - GCSANC  
Executive Secretary

know even know exist. How do you keep abreast of all this? By participating in CONTINUING EDUCATION, the "CE" part of CEUs. GCSAA continues to offer the best and most economical

method of "keeping the profession professional." Web based education is the "way of the future" (and not too distant future either). Web based education provides that opportunity on demand. Travel to GCSAA Annual Convention offers a great opportunity to keep abreast of the changes. The local associations well as various related professional organizations (NCGA USGA PGA CMA) continue to provide quality low cost education to keep you informed and prepared for workplace and professional requirements. They offer monthly meeting functions to "fill in the gap" between annual sessions. Nowadays, the educational requirement will only continue to become more stringent - it is up to you to keep pace.

Your membership renewal invoice has been mailed in duplicate. One for you, one for your accounting department. Update your membership information and return it to GCSANC office by December 31, 2002.

**Absent this update, WE WILL ASSUME ALL INFORMATION ON THE MEMBERSHIP RENEWAL INVOICE IS CORRECT TO PUBLISH IN THE MEMBERSHIP DIRECTORY.**

*When Every  
Square Inch Counts...*



**Andersons™**  
GOLF PRODUCTS

### Particles Per Square Inch Calculator

	Size Guide Number (SGN)						
	100	125	150	175	215	240	
100	7.2	3.7	2.1	1.3	0.7	0.6	
125	9.0	4.6	2.7	1.7	0.9	0.7	
Pounds	150	10.8	5.5	3.2	2.0	1.1	0.8
Product	175	12.6	6.5	3.7	2.4	1.3	0.9
Per Acre	200	14.4	7.4	4.3	2.7	1.5	1.0
	225	16.2	8.3	5.0	3.0	1.6	1.2
	250	18.0	9.2	5.3	3.3	1.8	1.3

Contact Your Andersons Territory Manager

Bob Miller  
1-800-456-6401

## Naumann's NorCal News



**Mike Higuera Sr.** has accepted the Superintendent position at Saddle Creek G & CC in Copperopolis. Mike had been working with Murray Nonhof at Coyote Creek GC in San Jose. Castle & Cook Corporation operates both courses.

**PJ Spellman** has been busy with a little reconstruction. He is in the middle of redoing his #13 fairway by adding drainage and sand capping it

**Blake Swint** at Castlewood CC has recently rebuilt three tees and bunkers. Castlewood is also in the middle of rebuilding the clubhouse on the lower course

**Albert Cañedo** at Gilroy GC was involved in a car accident on November 8th. He was rear ended at high speed by an off duty police officer. Albert received injuries to his lower back and neck but still expects to make it to the Holiday party.....



## Observations from the Southwest

Southwest Regional Update: November 13, 2002

by Patrick Gross

First significant rainfall of the season – Many superintendents in the Southwest were glad to see the rain clouds roll in last week. Many areas received between 1" and 3" of rain to help flush the accumulation of soluble salts and sodium from the soil. As a reminder, late fall and early winter are a good time to apply gypsum if it is recommended in your soil test report so that winter rains can help work the gypsum into the soil.

Rapid Blight – A relatively new disease called Rapid Blight has been observed at a few courses in California during the past few weeks. The causal organism has been identified by Dr. Larry Stowell and Dr. Bruce Martin as part of the chytridiomycete family. The disease affects *Poa annua*, *Poa trivialis*, and perennial ryegrass, but a wider host range may be possible. Damage often occurs on *Poa annua* greens under intensive management and on bermudagrass greens, tees and fairways overseeded with *Poa trivialis* or perennial ryegrass. The symptoms appear as irregular shaped patches with a slightly yellow or darkened color. There is no mycelium or other visible disease structures that can be seen by the naked eye or by a hand lens to help identify the disease in the field. Discoloration and decline most often occur in October, November, and December.

The disease appears to be triggered by abrasive cultural practices (e.g. aggressive vertical mowing, brushing, sand topdressing), a reduction in fungicide applications, and high soil salinity. Cool temperatures and higher humidity typically experienced in the fall may also influence the disease. Dr. Stowell and Dr. Martin are collaborating to study the biology of the disease and develop a comprehensive management program. Preliminary data suggests that the disease can be controlled with a combination of mancozeb (*Pythium* rate) plus trifloxystrobin (*Fusarium patch* rate). A detailed overview of the disease from Dr. Stowell along with pictures is available at his website: <http://www.pace-ptri.com>

If you suspect a possible problem with Rapid Blight, you can also contact Dr. Phil Colbaugh at the Texas Agricultural Experiment Station to arrange sending a sample for diagnosis:

**Dr. Phillip Colbaugh**

Texas Agricultural Experiment Station  
17360 Coit Road  
Dallas, TX 75252  
Phone: (972) 952-9630  
Fax: (972) 952-9669  
Email: [pcolbaug@dallas.cntr.tamu.edu](mailto:pcolbaug@dallas.cntr.tamu.edu)

University of California, Riverside Turfgrass Website – UC Riverside opened their new Turfgrass Research Program website that is full of great information. The website is divided into nine sections:

- UCR turf Home Page
- General Information
- Research Projects
- Reports on Topical Issues
- Research Conference and Field Day
- UCRTRAC (UCR Turfgrass Research Advisory Committee)
- Publications
- Turf Links
- Search

There are multiple links to state government agencies, turfgrass industry associations, UC research centers, as well as nationwide university turfgrass research and education programs. While the entire website is well done, the sections on Research Projects and Topical Issues provide a wealth of information for superintendents and turfgrass professionals. The website can be reached at: <http://ucrturf.ucr.edu>

Pat Gross is the Director of the Southwest Region of the USGA Green Section



A recent Voice of the Valley Television Show focused on the re-design at Silver Creek Valley Country Club in San Jose, CA.

(L to R) On the set to describe the renovation process were GCSANC Member and Course Superintendent **Nick Checklenis**, Greens Committee Chairman **Art Knapp**, and PGA Director of Golf **Jay Jackson**. Listening intently was host **Emmy Moore Minister**.



**Emmy Moore Minister** with Voice of the Valley Television Show congratulates GCSANC Past President **Bob Costa** on his contributions to the game of golf and to the Association. Costa, the 2001 Golf Course Superintendent of the Year is also Vice President of Golf Course Management for the Lombardo Group. He oversees all course maintenance at Rancho Canada Golf Club and Laguna Seca Golf Club including its new state-of-the-art range facility. Costa took time on the set to discuss the all-encompassing role of today's superintendent.



## GCSAA Chapter Delegates Meeting Summary

By Pat Finlen, CGCS

On November 1st, 2nd and 3rd, I attended the GCSAA Chapter Delegates Meeting in Kansas City as our Chapter Representative. A number of topics were discussed, many of which are of significant importance to our association and membership.

The most surprising topic for the delegates was the announcement of a study undertaken by GCSAA about a possible move of the GCSAA Headquarters. This study has identified a number of potential sites from a list of over 300 possible cities. Most notable was the current location in Lawrence, Atlanta, Dallas, Jacksonville, Orlando and Phoenix. If the association were to move from Lawrence to any location, a change in the Articles of Incorporation would have to be approved at the annual meeting in Atlanta. The Chapter Delegates overwhelmingly voted to place this item on the ballot in Atlanta.

The reasons for the study are summed up in the following statement by GCSAA, "The leadership of GCSAA believes today that to maximize the visibility of the association in the golf community, to continue to broaden the scope of membership services, and to continue to solidify its leadership role in golf requires a re-examination of the benefits to the membership of moving GCSAA to a high-traffic, golf intensive region."



Other items discussed include the announcement of a dues increase. During the last three years GCSAA has operated its education programs with a carry over of funds (\$1,650,000) from 1999 & 2000. That carry over will run out this year. Last year GCSAA lost nearly \$800,000. A dues increase for superintendents from \$250 to \$300 will generate around \$800,000. This will be voted upon at the annual meeting in Atlanta.

PDI will take effect on July 1. Members should have received a PDI scorecard. With the implementation of PDI this July, many new avenues of education will be opened up to our members. GCSAA Board members travel and expenses were discussed. Items included in the discussion were the type of reimbursed expenses, spouse travel and what Board members attend which events during the year.

One final topic of most importance to us is the election of the Board of Directors for GCSAA. One of our own members, Gary

Carls CGCS, is running for the board this year. Gary gave a great presentation to the Delegates as well as answered their questions during a break-out session. The key to helping Gary get elected is your support. You can help by calling your acquaintances in other Chapters soliciting their support of Gary. The more contacts we can make on Gary's behalf, the more likely he will be elected.

These and many other GCSAA issues affect us.

**Your voice can be heard through your vote at the annual election.**

47 of our members have chosen to vote independent of the Chapter. The entire board and I are open to everyone's thoughts and ideas. Please take the time to let us know what you think on these important issues before the GCSAA Annual Meeting in February, 2003.



The Best People,  
The Best Products,  
The Best Service!

### For Quality Turf Care

- Plant Protection Chemicals
- Full Seed Line
- Custom Liquid Fertilizers
- Custom Dry Fertilizer Blends
- Aquatics
- Turf Monitoring Program
- Andersons Golf Products
- Agri-Flo Soil Treatment

**David Murphy**

*Turf and Ornamental P.C.A.*

Office: (800) 726-5873 Cell: (831) 594-6008

## GCSANC Christmas Party Casino Night

Friday December 6, 2001 In Monterey

Monterey Beach Hotel  
Call For Reservations  
831-394-3321

Rates valid from Dec 5,  
2002 to Dec 12, 2002

Refer to GCSANC group  
rates for these dates only.

	GARDENSIDE	OCEANSIDE
Single	\$84.00	\$114.00
Double	\$84.00	\$114.00
Additional Person...	\$15.00	



Christmas Event 2002  
Brian Bagley, Barb, Katie, Gerald & Sara Barber



## GCSANC Dues Notice

The Board of Directors of the Golf Course Superintendents Association of Northern California will present to the membership for a vote at its Annual Meeting in January of 2003 the following increases in dues for 2003.

Class	2002 Dues	2003 Dues
A/B/C/ Inactive	\$100	\$125
Affiliate	\$145	\$170
Associate	\$100	\$125
Class A	\$100	\$125
Class A Life	\$0	\$0
Class B	\$100	\$125
Class C	\$100	\$125
Retired	\$30	\$37
Retired A or B	\$30	\$37
Student	\$40	\$50

As Secretary-Treasurer I will explain the rational behind a dues increase for our association. I will start by giving a little history. It has been five years since the last dues increase for our association. Costs for everything that we do as individuals have increased, the same goes for our association. Most notably we have seen increases in our Administrative costs, postage, printing and meetings.

In addition, we have increased services in many areas to the membership. Credit card processing is now available for payment of meetings. More and more of our members are taking advantage of this form of payment, which is at a cost to us. Our presence in the media has increased dramatically during the last five years through the use of a media consultant and by our attendance at many events that increase the image of the superintendent.

Other expenses that have increased or are new to us include the cost of compliance for dual membership with GCSAA, our commitment and participation with the state association on many different fronts including legislative issues, insurance for the association and Board of Directors and research within the association. How have we funded these increases? During the past few years we have dipped into our reserves to pay for these added services and increased cost of doing business. We are at the point where we will not continue to spend more money than we take in.

With the current state of the economy, before any discussion of a dues increase could take place, we challenged each board member and committee chair to look at the expenses of the association and to make recommendations of where we could limit spending and ways to increase revenue.

We have curtailed spending in many areas this year, including board meetings expenses, research and media relations. We are looking at our newsletter and directory, which both lose money, to see how we can at least break-even or make money in these areas.

Several times in the previous year we have lost money on monthly meetings. This year we have operated monthly meetings at a break-even or slightly above break-even point.

We are in the process of developing (SOPs) Standing Operating Procedures for everything we do as a board. This will include financial worksheets for every event and a much more detailed budgeting process that will have continuity from year to year.

One bright spot this year during a downturn in the economy has been the support of our affiliates. They have continued to support the association and our activities. Without their continued support a larger dues increase or a curtailment in services would be needed.

Our board is committed to operating in a prudent fiscal manner. The reality is that there never is a good time to raise dues, but that time is here and an increase will be presented in January. Dues statements are now being sent out at the current rate. If the increases are passed, a supplemental statement will be sent out in late January.

It all comes down to value and what you get out of the association for your dues. We are committed as a board and association to providing value at these increased amounts and trust you will support of our efforts.

**Patrick R. Finlen, CGCS**  
Secretary-Treasurer  
Golf Course Superintendents Association  
of Northern California



## GCSAA Education

Tuesday, January 7 - Wednesday, January 8, 2003

8:00 am to 5:00 pm

Crowne Plaza Pleasanton  
Pleasanton, CA

- **Managing Turfgrass Root Systems**
- **Management of Localized Dry Spots and Water Repellent Soils**
- **Fundamentals of Turfgrass Management 1**

*Managing Turfgrass Root Systems and Management of Localized Dry Spots and Water Repellent Soils are each a half day seminar.*

Member Fee: \$65 [seminar] • Non-member Fee: \$100 [seminar]

*Fundamentals of Turfgrass Management 1 is a full day seminar.*

Member Fee: \$130 • Non-member Fee: \$195

Brought to you by the GCSA of Northern California



For more information or to register, Call (800) 472-7878.

## What is your problem?

- Poor quality irrigation water
- High pH soil and water conditions
- Sodium and salt build up from using effluent waters
- Uneven water penetration
- Anaerobic conditions
- Algae related problems in reservoirs and irrigation systems

Call on the company with the right solution, equipment, customer satisfaction, and service reputation to back it all up.

**WESTERN SO2 SYSTEMS, INC.**

Pf/Fax: 925-376-5340 • Cell: 925-250-4559 • E.mail: westernso2@aol.com

## Delivering value...

... the foundation on which Target has built its reputation. For over 30 years Target has brought value to golf course superintendents in the form of:

- **Quality Products**
- **Regularly Scheduled Deliveries**
- **Informative Training Programs & Seminars**

1155 Mabury Road, San Jose, CA 95133-1029  
800-767-0719 • 408-293-6032 • Fax: 408-287-2004  
[www.target-specialty.com](http://www.target-specialty.com)





## GCSANC Institute 2002



Golf Course Superintendent Institute 2002 Cocoanut Grove Conference - Santa Cruz, Calif.



Santa Cruz Supt's socializing in the Sun Room Terrace at the Cocoanut Grove



Networking and trade show exhibits offered many topics for discussion

Hosted by  
**BOULDER CREEK**  
GOLF & COUNTRY CLUB

## GOLF Tournament Scoreboard

[Par 65]

### Low Net:

Terry Grasso	62
Mike Ligon	63

### Low Gross:

Mike Hill	67
Gary Skolink	68



Dean Gump and Terry Grasso stump V.P. Bob Lopic



Bob Dalton and Greg Dunn talking trends



Juan Arteaga ponders Bill Keller's punchline



Bob Costa fills in CEU sheet as Huesgen & Naumann look on...



Join Us For This Year's...

# Casino Night Christmas Party



Jim & Barbara Ross enjoying the company of the Wagners, Myrtle & Cliff



Mike Ligon, (center) trying to school the youngsters, Mike Souza & Jason Green.



Bish Slack going for her point! Beth Davies, Roger Robarge, Mike and Chris Gravale observing her technique.



Anita Ingram and Frank Barnerio wonder what Adrian has up his sleeve.



Georgiane Carls with winnings.

## FLASH BACK

### Christmas 2001 Photo Gallery



Albert Cañedo, with his winnings from last year's Casino Night Christmas Party 2001





## THANKS To All Our Sponsors That Contributed To The GCSANC Institute 2002 Santa Cruz

<b>Brian Gaunce</b>	DBD Structures	<b>Peter Herrera</b>	Bunker Masters, Inc.
<b>Chuck Dal Pozzo</b>	Anderson Golf Products	<b>Emory Hunter</b>	Hunter Associates
<b>Greg Dunn</b>	West Coast Turf	<b>Steven Jones</b>	Valley Crest Tree Co.
<b>Kevin Eppich</b>	Turf Star	<b>Mike Ligon</b>	H.V. Carter Co.
<b>Michael Farman</b>	Farmload Distributors	<b>David Murphy</b>	Western Farm Service
<b>Gregory Fernald</b>	Target Specialty Products	<b>Don Naumann</b>	Sierra Pacific Turf Supply
<b>Frank Halstead</b>	Delta Bluegrass	<b>Mike Ravel</b>	United Horticultural Supply
		<b>David Trieschman</b>	C.L. Bryant

## CNN Studio Tour

Available at \$9.00 per person.

First Tour starts at 6:00 pm, last Tour 9:20 pm.

Studio Tour lasts 45 minutes.

You must register for the Studio Tour  
by January 15, 2003.

Send Tour Registration and Fee To:

[We accept personal checks  
or credit card info.]

**California GCSA**  
221 W. Palm Ave.  
Reedley, CA 93654

## California GCSA

**2003 California Hospitality Suite  
CNN Center, Atlanta, GA**

**February 13, 2003  
6:00 - 10:00 pm**

The California GCSA is planning the 2003 Hospitality Suite in Atlanta, GA. The Hospitality Suite will be held at the CNN Center Atrium Terrace. We are offering a Sponsorship Program for companies that would like to support this event.

### SPONSORSHIP PROGRAM

<b>World News Club:</b>	Donation of <b>\$5000.00</b> or more.
<b>Local News Club:</b>	Donation of <b>\$2500.00</b> to <b>\$4999.00</b> .
<b>Headlines News Club:</b>	Donation of <b>\$1000.00</b> to <b>\$2499.00</b> .
<b>Weather News Club:</b>	Donation of <b>\$500.00</b> to <b>\$999.00</b> .
<b>Money News Club:</b>	Donation of <b>\$250.00</b> to <b>\$499.00</b> .
<b>Sports News Club:</b>	Donation less than <b>\$250.00</b> .

[ANY DONATION WILL BE APPRECIATED]

Your Sponsorship is  
GREATLY appreciated  
by the California Golf  
Course Superintendents!

Mail Donations to:  
**California GCSA**  
221 W. Palm Ave.  
Reedley, CA 92654



## CUSTOM DESIGNED METAL BUILDINGS

*Attractive* ■ *Cost Efficient* ■ *Durable*

Green Hills Country Club Turf Care Facility



*Ideal For All Your  
Turf Care and Clubhouse Facility Needs*

*Star Buildings can be custom  
designed for a wide range of uses:*

- Clubhouses
- Golf Cart Barns
- Tennis Court Buildings
- Pro Shops
- Restaurant Buildings
- Maintenance Facilities
- Swimming Pool Buildings
- Weather Protection Canopies
- Hazardous Material Storage
- Wash Down Facilities

**DBD Structures**  
*Provides Complete  
Management, General Construction  
and Design Services*

- Preconstruction Planning
- Architectural Design
- Engineering Design
- Sitework & Landscaping
- Building Construction
- Interior Improvements

*To Find Out How Easy it is to put DBD Structures'  
"Professionalism, Integrity and Attention to Detail"  
to Work for You, Call or e-mail:*

**D·B·D** DESIGN  
**STRUCTURES** BUILD  
DEVELOPMENT

1329 Evans Avenue, San Francisco, CA 94124 (415) 977-0201

Brian Gaunce or Jim Aude  
(ext. 123) (ext. 130)

**415-970-0201**

e-mail: [star@dbdstructures.com](mailto:star@dbdstructures.com)