

## MESSAGE FROM YOUR PRESIDENT



It's a new year, with new hopes, new dreams, and new ambitions. As we begin 1989, many of us have established new goals for the coming year. Maybe it concerns our jobs, or it just means refining last years hopes. Whatever your dreams and ambitions may be, I wish each and everyone of you a prosperous and happy new year.

\* \* \*

Our annual Christmas Golf Tournament and Dinner Party was again an outstanding success. Many thanks to **Tim Greenwald** and all the staff at Rancho Canada for the fine evening. Santa and Mrs. Claus were present to hand out many gifts, and also the grand prize drawings for the SIGGA funds were also disbursed. Committee members **Bob Dauterman** and **Rod Kilcoyne**, along with **Myrtle** and **Cliff Wagoner**, did an outstanding job on this event, and are to be commended for their handling of all the details.

\* \* \*

With spring just around the corner, and also our Annual Election meeting, it's time to think about participating as a member of the Board of Directors. Once again we are looking for individuals willing to give of their time and skills to enhance the operations of GCSANC. The nominating committee will soon be looking for members who would like to contribute to the growth of this association. The rewards are great for those who participate, not only personally, but also for the betterment of golf as well. If this interests you, please contact **Ken Sakai**, the committee chairman or any Board Member the office for information...

**WE NEED YOU!!**

\* \* \*

The GCSAA Conference will be taking place next month in Anaheim. For those of you who have not attended one of these international conferences, the trip is well worth while. Many educational seminars will be available, along with the huge trade and equipment show. This is an event not to be missed, especially since it will be so close...**Frank Hannigan**, Senior Executive Director of the USGA, recently announced his retirement from that organization. Hannigan's resignation will be effective as of the USGA's annual meeting February 4, 1989. **David Fay**, Assistant Executive Director will become acting Senior Executive Director. Hannigan will join ABC-TV Sports with both on-air and production responsibilities on the network's golf telecasts, and will write a monthly column for GOLF magazine. Locally, **Grant Spath** from Palo Alto was elected to another term as First Vice President. The UC Davis Annual Jobs Faire will be held February 16, 1989 at the Davis Campus. This venue has provided some promising student interns for summer help, and if you can help out these horticulture oriented students with summer work, contact **Nancy Tibbitts** at Work-Learn and Career Planning and Placement Department at UC Davis (916) 752-2861. **Joe Rodriguez**, CGCS and **Cliff Rourke** will be representing GCSANC at the event to enable students to gain first-hand information on Golf Course Management.

## NAUMANN'S NORCAL NEWS:

**Carl Rygg**, has been given the official "Superintendent" title of Spanish Bay Golf Links. He was the Assistant prior to his promotion. Before that, Carl was the Superintendent at Steamboat Springs Golf Course. Spanish Bay was recently named by Golf Digest as the best new Golf Resort in the U.S. for 1988. Congratulations Carl and Mike!!!...**D.J.Pakkkala**, former supt. at the Vintage Club, is now the Director of Golf Maintenance Operations for the Pebble Beach Corporation...**Mike Jones** has left Dry Creek Golf Course in Galt and is the new Supt. at Valley Hi C.C. in Sacramento. He recently completed installation of over 4 1/4 miles of 7' wide concrete cart paths. During that time, that wasn't all he was doing. He built 2 new tees, rebuilt one green, planted yardage markers on all par 4's and par 5's and built 15 planters throughout the course. Fritz won't say what he has in store for next year....A few weeks ago, **John Lloyd** (Marina GC) and **Denny Plato** (Alameda GC) were playing golf at Los Positas GC in Livermore. (No doubt trying to pick up some pointer from **Mulkh Raj**). Both John and Denny told me they lit the course on fire with excellent rounds. They were finished around noon. A few hours later they found out the course wasn't the only thing ablaze. The clubhouse, pro shop, snack bar, offices and Red Baron Rest. was burned completely to the ground. It was started by a reroofing mishap. Luckily no one was hurt. Raj informs me that not one golfer failed to finish his or her round that day. The new clubhouse is scheduled to start construction soon.

In Memorium:

**Tom Brown**, Supt. at Sun City CC in Arizona was recently hit and killed by a dumptruck doing work on his golf course. The truck backed into Tom, killing him instantly. Prior to his move to Arizona, Tom was for the last year, the Supt. at Manteca GC in Manteca.

AS OF JAN. 31, 1989, MEMBERS WHO HAVE NOT PAID DUES, WILL BE DROPPED FROM THE ROSTER.

## MEMBERSHIP-JANUARY 1989

### Waiting to take Class B Exam:

K.T. "Ty" Abraham, La Co nte nta GC, Valley Springs

### Class D:

Nicholas Checklenis, Los Altos CC

Bill Keller, Boulder Creek G&CC, Boulder Creek

Carl King, contra costa CC, Pleasant Hill

Kibbie W. Jones, Jr., Los Altos

### Class F

Jerry Ingledue, Livermore Area Rec & Park District

Cd Bye, Hydrotex Corp, Salinas

### Transfer from Class A to Class E:

Albert Camara, retired from Modesto Muni

Wylie Lowe, retired from Bay farm, Alameda

### Transfer from Class F to Class A-Life:

John Engen, Golfco, Chico (retired)

## NINE WAYS TO KILL AN ASSOCIATION

Here are the Nine commandments for making sure your association meets a certain death:

1. Don't participate beyond paying your dues-let "them" handle things. Then complain that members have no voice in what goes on.
2. Decline all offices and committee appointments-you're too busy for them.. Then vociferous advice on how "they" should do things.
3. If appointed to a committee, don't work-it's a courtesy appointment. Then complain because the organization has stagnated.
4. If you do attend management meetings, don't initiate new ideas. Then you can play "devil's Advocate" to those ideas submitted by others.
5. Don't rush to pay your dues-they're too high anyway. Then complain about poor financial management.
6. Don't encourage others to become members-that's selling. Then complain that membership is not growing.
7. Don't read the mail from headquarters-it's not important anyway. Then complain that you're not kept informed.
8. Don't volunteer your talents-that's ego fulfillment. Then complain that you're never asked, never appreciated.
9. And, if by chance the organization grows in spite of your contributions, grasp every opportunity to tell the youngsters how tough it was, how hard you worked in the old days to bring the organization to its present level of success.

**Credit:** Western Chapter  
News-International Society of Aborigiculture  
as seen in the Divot News.

# 1988 GCSANC LARRY LLOYD MEMORIAL TOURNAMENT

## RANCHO CANADA GOLF COURSE, CARMEL

### DECEMBER 4, 1988

#### SUPERINTENDENT FLIGHT

##### GROSS

*LARRY LLOYD MEMORIAL TROPHY WINNER-Steve Good*

Steve Good 68

Ross Brownlie 75

Scott Lewis 75

Mike Phillips 76

Armando Claudio 76

Mike Garvale 77

##### NET

Paul Dias 67

Mike Leach 70

Paul Collieran 71

Dulbag Dubria 71

Phil Laret 71

Ray Story 71

Scott Jorgensen 72

Tim Sedgley 72

Romain Robertas 72

#### CLASS F

##### GROSS

John Wiskowicz 78

Doug Macdonald 81

Jim Schmidt 82

##### NET

Ron Rogers 67

Don Naumann 69

Mike Eastwood 71



#### SIGGA FUND CERTIFICATE WINNERS

##### Superintendent category

Jim Ross

David Hayes

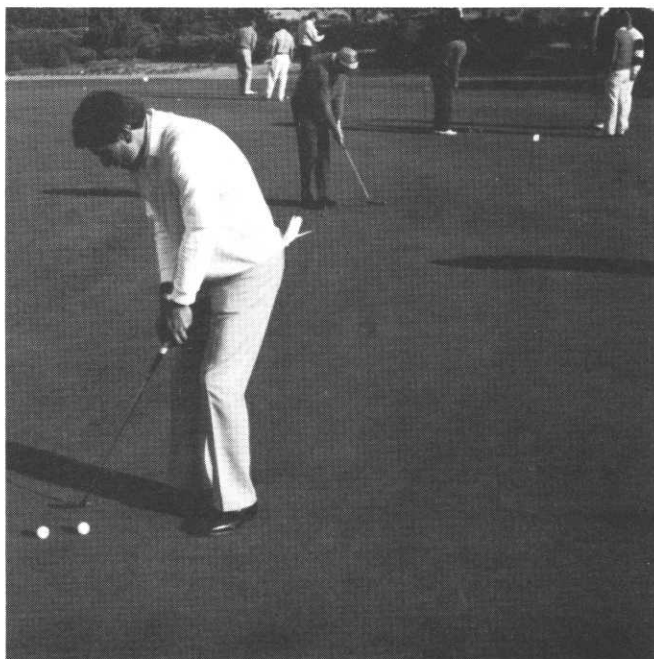
Tarsem Singh

##### CLASS F

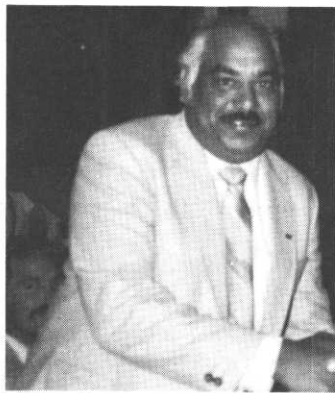
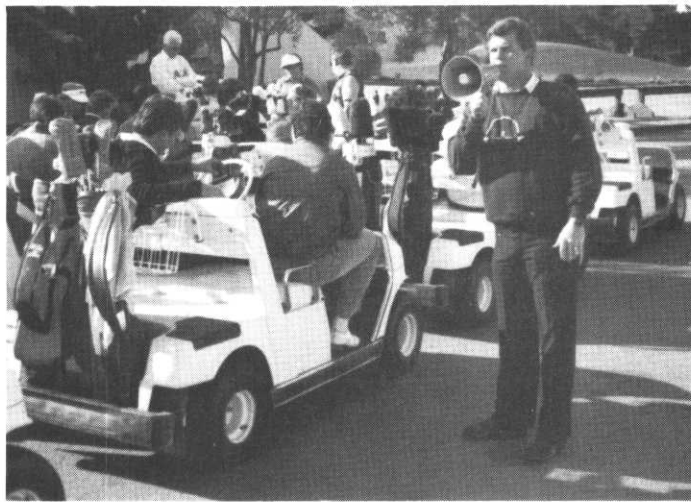
Dennis Leong

Edward Zuckerman

Charles Hoeffler



# CONGRATULATIONS



W  
I  
N  
N  
E  
R  
S  
!  
!  
!

## **TO DIG OR NOT TO DIG THE RED TURPENTINE BEETLE FROM INFESTED PINES?**

The best way to protect pine trees from bark beetle infestation is to keep them healthy. But the beetle's preference for sick or weak trees does not mean that the red turpentine beetle cannot or will not attack apparently healthy trees. They often do, especially after drought years when a large population builds up.

Recently, I was informed about a remedy to "control" a red turpentine beetle infestation by excising beetles from beneath the bark. This technique was apparently taught at some short course for arborists. **DO NOT DO IT.**

Bark beetles, like many other insects, use long-range chemical communication to announce to their cohorts that host material is suitable for reproduction. In the case of *Dendroctonus* species (of which the red turpentine beetle is one), it is the female that emits odors called pheromones that are carried through the air for long distances; when detected, females and males of the same species respond to them. The pheromones emitted by bark beetles are termed the population aggregation pheromones. However, the mechanism is more complex: the same odor can be beneficial for other bark beetles such as the California five-spined *ips* which can use it as a navigational cue. Those who attended my seminar on the Use of Hormones in Horticulture (May 1988), witnessed another twist in this communication system. I baited apparently healthy Monterey pine with the synthetic pheromone for the California five-spined *ips*, *Ips paraconfusus*. Within 24 hours, not only *Ips* beetles but also red turpentine beetles responded in large numbers. HOW DOES THE ABOVE RELATE TO RED TURPENTINE BEETLE EXCISION? Entomologists discovered that the gut of female *Dendroctonus* bark beetles contains the pheromone. Thus, when you attempt to excise red turpentine beetles from beneath the bark almost certainly some will be crushed. As a result, pheromone is released and more beetles arrive. One might ask what if the beetles are not crushed? The answer is found in a study conducted by UCCE Entomologist C.S.Koehler and his co-workers. Trunk-injured pines attracted significantly more beetles than uninjured ones. Therefore do not perpetuate the problem by injuring pines.

**What is the best thing to do?** To disrupt the pheromone communication of the red turpentine beetle, prevent new attacks by spraying pine trunks with lindane or carbaryl from the ground up to five feet. Apply the insecticide in two directions: clockwise and counterclockwise around the trunk to reach crevices under the bark plates. This should be done in the late winter (mid-February) in our area, so that there is a deposit of insecticide present before beetles begin flight activity in the spring.

Remember, by the time you spot paprika-like boring dust in crevices and in cobwebs and the tree is fading, it is too late to spray. Cut the tree down and haul it away or if you keep the firewood cover it completely with clear plastic. Act quickly or the beetles will spread to other pines.

Article contributed by Pavel Svihra, Horticulture Advisor, UC Coop. Extension, County of Alameda.

GCSANC wishes to thank the following people for making our Christmas Party and Annual Golf event a success.

Special thanks to the staff at Rancho Canada Golf Course  
Tim Greenwald, Superintendent  
Carl Miller, Manager  
Shim Lagoy, Pro

Thanks to Mr. and Mrs Claus

And to the following for their donations:

ADVANCED DRAINAGE SYSTEMS-Walter Bray

ALL INCORPORATED-Wayne Elwood

AMERICAN IRRIGATION-Dick Bolt, Dave Tanner

AUTOMATIC RAIN COMPANY-Tom Jackson

BAY COUNTIES SAND & GRAVEL-Steve Pasalich

BUCKNER SPRINKLER-Don Kuhlman, Steve Mills

H.V.CARTER COMPANY-David Graves, Dan McKay, Steve Taylor, David Baldasare, Fred Nicoll

CHRISTENSEN IRRIGATION COMPANY-Jack Christensen

CIARDELLA'S GARDEN SUPPLY-Robert Budelli

R V CLOUD COMPANY-Ronnie Rogers

COUNTRY CLUB SALES,INC.-Gary Cox

ROBERT MUIR GRAVES-Robert Muir Graves

HYDRO ENGINEERING-Adrain Bertens

JENKINS MACHINERY CO.-Ben Fuller

JWS SALES/FILTOMAT-Jim Schmidt

RUSSELL D. MITCHELL ASSOC. INC.-Russell Mitchell, Doug Macdonald

TED MOORE TRUCKING, INC.-Ted Moore

MOYER PRODUCTS, INC.-Emil Yappert

NAIAD COMPANY-Jim Karrick

NORTHERN CALIFORNIA GOLF ASSOCIATION-Bill Paulson

PACIFIC PARTS & EQUIPMENT-Joe Seimas

PAR EX-Ibsen Dow

PLANT GRO CORPORATION-Mike Ravel, Al Ravel

PUMP REPAIR SERVICE COMPANY-David Archer

RMC LONESTAR-Fred Thomsen

O.M.SCOTT & SONS-Chuck Dal Pozzo

SIERRA CHEMICAL COMPANY-Kathy Hesketh

SIERRA PACIFIC TURF SUPPLY-Don Naumann

J.R. SIMPLOT COMPANY-Don Meyer

EDWARD S. WALSH COMPANY-Doug Weaver

WESTERN LAWN EQUIPMENT COMPANY-Ben Rollefstad, Paul Schaffer

WEST STAR DISTRIBUTING-Mike Ginelli, John Winskowicz, Mike Eastwood, Mitch Frasier, Dan Rogers, Gene Warne is owner.

WEST STAR DISTRIBUTING-Provided the refreshment cart on the course driven by Francis.

FOR SALE: RANSOME 517 SPORT CUTTER-Approximately 2 1/2 years old-Price negotiable.Call Mike Simpson, Los Altos CC, (415) 948-6232.

## A LOOK AHEAD

Feb 6-14	GCSAA Int'l. convention Anaheim, CA
Feb 16	Alamaden G&CC
March 14	Ridgemark G&CC
April	Palo Alto Golf Club
May	Rossmoor Country Club

### NEWSLETTER NOTES:

MARIN MUNICIPAL WATER DISTRICT HAS HONORED **DAVE SEXTON**, Supt. at Meadow Club, and the management at Meadow Club for reducing water use by 18% this past season. Using conservation awareness, efficient irrigation distribution systems and a plan for recovering wasted water, the Meadow Club has developed a model water management program.

### New Law affects many Agencies:

Senate Bill 2126 has been signed into law. This amended section of SB 12001 which traditionally exempted public agency personnel engaged in official duties conducting pest control in agricultural use situations from the requirement to possess a PCA License provided their agricultural use pest control recommendations were put into writing. This will no longer be the case for many public agencies in the near future. Caltrans, city and county public works departments, school districts, municipal golf courses, park and recreation districts will be required to either have a PCA on staff, contract with a private PCA, or rely on their respective Agricultural Departments or some other PCA, to write site specific agricultural use pest control recommendations. What does this mean? A written recommendation must be in the possession of the applicator at the time of a pesticide application. Agencies will have to obtain written recommendations in order to conduct agricultural use pest control from their Ag department or a qualified PCA.

SB2126 allows public agency personnel previously exempted a unique opportunity to obtain a PCA license. SB2126 waives the college educational requirement for one year and one year only: 1989! CDFA will

establish the specific requirements that must be met to qualify to take the state PCA examination.

Information presented here from 1988 Fall Pesticide Applicator's Professional Association newsletter. for more information, please contact John Ford at (916)678-5364.)

### THANKS CAREY

Carey Krefft, our Associate Newsletter Editor called to report that due to pressing business concerns, he would have to resign from the newsletter associate position with GCSANC. Through Carey's fine efforts and contributions the newsletter has continued to improve and expand. His expertise will be missed, but he is confident that the newsletter is in good hands with Editor Jean LaDuc. Many thanks to Carey for the time he has invested in helping to improve "Thru The Green".

### WHAT IS "GOLDEN STATE FAIRWAYS"?

A new magazine just for Supt. is on its way to your mailbox soon. Be sure to watch for the first issue!

### TURFGRASS MANAGEMENT FOR PROFESSIONALS

Current techniques in the art and science of turfgrass management are the focus of this two-day course. It should be of special interest to golf course supt., park and recreation site managers, and other professional turf and landscape managers. The program covers water relations, irrigation and drainage management, management of high-traffic turf, fertilization, thatch and shade management, and pest control. Eight course instructors are UC faculty members and Coop. Extension specialists and advisors.

Time and Location: March 15 & 16, 9a.m.-4p.m., Orchard Room UC Extension Center, UC Davis.

Fees: \$140 (includes all course materials and lunches). Approval for 2 CE credits from GCSAA has been requested. Approved for 4 hours of PCA credit.

Enrollment: University Extension, UC Davis, Davis, CA 95616 by March 8, 1989.

LEND A HELPING HAND-Larry Norman, Supt. at Pebble Beach Golf Links, is looking for experienced golf course workers to volunteer their time to help with the AT&T Tournament.

January 26-29. If you or your staff are interested, contact Larry at (408) 624-3811 ext. 209 by January 17. Besides helping a fellow Supt. you will receive a hat & shirt with the AT&T logo, free pass for the day worked and free lunch. Let's all give Larry a helping hand.



#### AMERICAN IRRIGATION REPAIR & SUPPLY

3270 Seldon Court 3  
Fremont 94538 415 659-8558

#### ANDERSEN TEE MARKERS

20 Valley Drive  
Orinda 94563 415 254-3816

#### AUTOMATIC RAIN COMPANY--Tom Jackson

4060 Campbell Avenue  
Menlo Park 94025

#### BAY IRRIGATION & TURF SUPPLY

137 Mason Circle  
Concord 94520 415 825-9411

#### BROWN SAND, INC.

874 East Woodward Avenue  
Manteca 95336 209 239-4837

#### H. V. CARTER COMPANY, INC.

1700 East 14th St., Box 12006  
Oakland 94604 415 536-9300

#### CHRISTENSEN IRRIGATION CO., INC.

1820 E. Garry Ave 116 AC 714  
Santa Ana 92705-5804 \261-6076

#### CIARDELLA GARDEN SUPPLY, INC.

Top Dressing - Custom Mixing  
Palo Alto 94303 415 321-5913

#### R. V. CLOUD COMPANY

1217 Dell Avenue  
Campbell 95008 408 374-8370

#### CRONATON WELDING SYSTEMS, INC.

779 Brannan Place  
Concord 94518 415 685-2815

#### COUNTRY CLUB SALES, INC.

4592 E. Second Street  
Benicia 94510 707 746-6610

#### DELTA BLUEGRASS COMPANY

P. O. BOX 307  
Stockton 95201 800 637-TURF

#### GOLDEN BEAR EQUIPMENT CO

3655 Alhambra Ave 800 852-8686  
Martinez 94553 415 228-0346

#### GOLFCO - John Engen

P. O. Box 7750  
Chico 95927

#### HYDRO ENGINEERING - Adrian Bertens

Box 505 415 837-1892  
Danville 94526

#### INTERNATIONAL SEEDS, INC.

P. O. Box 168  
Halsey, Oregon 97348

#### JENKINS MACHINERY COMPANY

1848 Arnold Industrial Place  
Concord 94520 1 800 642-2456

#### K K W INC. - John Deming

20470 Corsair Blvd  
Hayward 94545 415 785-0735

#### RUSSELL D. MITCHELL ASOC., INC.

Irrigation Consultants  
Walnut Creek 94596 415 939-3985

#### NAIAD COMPANY - Jim Karrick

5627 Stoneridge Drive  
Pleasanton 94566 415 460-8530

#### N. CALIFORNIA GOLF ASSOCIATION

P. O. Box NCGA  
Pebble Beach 93953

#### NSTC/FARMTEC - Carey Krefft

1950 Burroughs 800-FARMTEC  
San Leandro 94577

#### PACIFIC PARTS AND EQUIPMENT

John Deere Golf & Turf Products  
Oakland 94601 800 772-2516

#### PAR-EX PROFESSIONAL PRODUCTS

Ibsen Dow 800-4-ESTECH  
San Francisco 94127

#### PLANT GRO CORPORATION

P. O. Box 703 408 292-4332  
San Jose 95106

#### PUMP REPAIR SERVICE COMPANY

San Francisco 94134  
415 467-2150

#### RMC LONESTAR

P. O. Box 5252 415 463-1420  
Pleasanton 94566

#### SCOTTS PROTURF

Chuck Dal Pozzo  
415 657-6956

#### SIERRA PACIFIC TURF SUPPLY

Don Naumann - Campbell 95008  
408 559-8893

#### J. R. SIMPLOT COMPANY (Best)

P. O. Box 198 209 858-2511  
Lathrop 95330

#### TURF EQUIPMENT SERVICES

A Mobile Service & Repair Facility  
Ben W. Showard 415 426-8968

#### UNIMIN - Dry White Silica Sand

Sand Traps and Top Dressing  
Byron 415 634-3575

#### WEST STAR DISTRIBUTING, INC.

415 887-1222  
Hayward 94545

#### WESTERN LAWN EQUIPMENT CO

50 Edward Court 415 342-4440  
Burlingame 94010

#### WILBUR ELLIS - Lindsay Jennison

Box 2088 408 758-1397  
Salinas 93902

## OUR HOST AND HIS COURSE

Our host superintendent, Mike Basile, attended SUNY in Farmingdale, NY in Turf Management. Mike came to California in 1979 and worked for Al Glaze at San Luis Bay Inn. He worked his way to asst. supt. and took a supt. job at Sea Pines GC in Los Osos. From there he went to Rancho Maria in Santa Maria in 1983. From there he worked at La Purisima in Lompoc as the supt. from construction until the course opened. In June 1987 he moved to Almaden CC. Mike hosted the LPGA at La Purisima in May 1987 and the LPGA at Almaden Sept. 1987, 1988 and 1989. 1988 has been a productive year for Mike. He has added 14 bunkers; one pond on #18; rebuilt 8 bunkers and is planning on putting in a new irrigation system in 1989. He is also rebuilding his putting green from a native soil base to a base of 80:20 mix of sand and peat, complete with its own irrigation and drainage system. We look forward to joining Mike on Feb. 16 at Almaden CC.



## Northern California Professional TURF & LANDSCAPE EXPOSITION

January 25, 1989 — 8:30 a.m. to 5:00 p.m.

January 26, 1989 — 8:30 a.m. to 3:00 p.m.

**Santa Clara Convention Center**  
**5001 Great America Parkway**  
**Santa Clara, California**

Presented by the Northern California Turfgrass Council

#### PAST PRESIDENT

Allan Schlotthauer, CGCS  
356 Curie Drive  
San Jose, CA 95119

#### DIRECTORS

Rod Kilcove, CGCS  
140 Norman Avenue  
Clyde, CA 94520

#### DIRECTORS

Robert Dauterman  
114 La Quebrada Way  
San Jose, CA 95127

#### DIRECTOR

Mike Garvale, CGCS  
3000 Alexis Drive  
Palo Alto, CA 94304

#### OFFICE

1233 Kansas Avenue  
Modesto, CA 95351  
(209) 523-7141

Information contained in this publication may be used freely, in whole or in part, without special permission as long as the true context is maintained. We would appreciate a credit line.