

Now that the weather has somewhat cooled off, and the fall season approaches with shorter days and longer nights, many of us can relax after having been through various degrees of water rationing and conservation. Some of us will be facing continued water restrictions throughout the winter until the snow pack is evaluated shortly after the first of the year. Heavy rains this winter will somewhat alleviate the situation for next season, but only a larger than normal snow pack will guarantee the unlimited water resources we have enjoyed in the past. Hopefully the public, our club members, and golfers in general will understand what has happened this past year, and will more readily accept golf facilities that are not totally irrigated.

The recent Golf Course Construction Management seminar cosponsored by GCSAA and GCSANC, was a total success. The event was sold out over a month before the seminar date. Look for further information elsewhere in this issue.

Vice President Pete Bibber, recently attended a Green Section meeting of the NCGA at Poppy Hills. One of the main topics of this meeting was participation by local chapters and both the Northern and Southern Golf Associations in a research project. The main focus of the project will be Kikuyu research, from understanding its habits to management. As more information is gathered on the potential for our participation, we will keep you apprised both at the meetings and through this newsletter.



The R-K Communications Group has been selected to publish a quarterly magazine representing the California Golf Course Superintendents Association Chapters. This will be a high quality publication, with information from all over the state. The first issue is scheduled for early February.

Be sure to keep Friday, December 2 clear on your calendar. This is the date for our annual Christmas Golf Tournament and Party at the Rancho Canada Golf Club. This is always our most festive social event of the year, with Mr. and Mrs. Claus passing out a grand array of gifts and prizes. Registration forms will be coming out soon so be sure to register early to assure yourself and your group a spot. Tim Greenwald, our host superintendent for the event, has assured us a fine day for our activities.

## THRU THE GREEN

Official Publication of the Golf Course Superintendents Association of Northern California.

### Editors:

Jean LaDuc, (415) 493-1413  
Carey Krefft, (415) 483-7394

DIRECT ALL CORRESPONDENCE :  
EDITOR, "THRU THE GREEN". GCSANC  
P.O. Box V-46, PALO ALTO, CA 94304

AWARDS COMMITTEE SEEKS  
NOMINATIONS

The GCSANC Awards Committee (Steve Carlton, CGCS ; Joe Rodriguez, CGCS; and John Winskowicz are currently soliciting nominations for Superintendent of the Year, Excellence in Golf Turf Management, Class F Merit Award, and Distinguished Service Award.

Nominations will be accepted by the committee until February 1, 1989 and awards will be presented at the GCSANC Annual Meeting in April.

SUPERINTENDENT OF THE YEAR

Criteria: Must be a member in good standing who has contributed in a manner which would be considered above and beyond the normal performance of their duties and is committed to outside activities for the betterment of the association and their fellow superintendents. Must not have received this award during the preceeding seven years.

EXCELLENCE IN GOLF TURF  
MANAGEMENT

Criteria: Must be a member in good standing who has done a superior job of maintaining and grooming their golf course, keeping in mind unusual problem solving, budget, manpower, number of rounds, etc. Must not have received this award during the preceeding seven years.

DISTINGUISHED SERVICE AWARD

Criteria: Awarded to an individual who has made exceptional contributions to the Association, the Golf Course Industry and the community.

CLASS F MERIT AWARD

Criteria: Must be a Class F member who is deserving because of their dedication and contributions to the betterment of the Association, and who is giving of their time and resources to the Golf Course Superintendent. Must not have received this award during the preceeding seven years.

Please submit nominations and comments to the committee.

con't from page 1 )

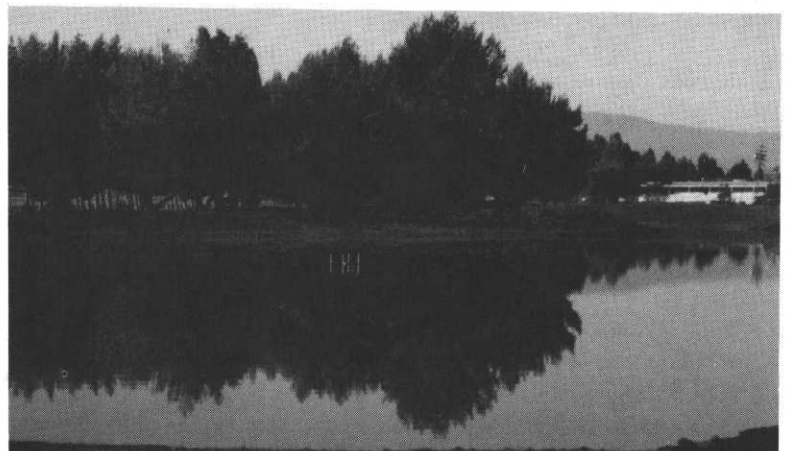
As you can see what was facing the City of Sunnyvale approximately 1 year ago. With all this in mind they created a position within the city structure to oversee this project or Fund 25. This fund is a self-supported "enterprise" fund; which means that we are seperated from our general tax base of the City. We are 100% fee supported and depend entirely on our golfers and licensees.

To correct the above problems would involve approximately \$5 million of funding. In order to implement, we would be loaned \$5 million from the Cities General Fund. This would be the first time in Sunnyvale's history that this would happen. This points out both the necessity and the Cities commitment to thoroughly improve their golfing facilities. The payback would be over a ten-year period. Over these ten years the cash flow was projected over \$35 million. The Cities commitment also extended to approving the largest projected increase within a program, a 46% operational increase. As one can see by the numbers these are no small programs and are extremely important in the Cities eyes.

The construction was started in late May of 1988 and was sceduled for completion in 120 days. The extent of construction was to shape through fine grading; from there existing staff took the project over from germination to establishment. May was selected primarily for optimum weather, and to eliminate the possibility of trying to germinate during the late fall, early winter months.

I would like to interject that at this point you need to have established a rapport with both your architect and construction people. As there will usually be some field corrections or changes. We were fortunate to have both, even though it wasn't a smooth road the entire journey.

(con't on page 5 )



## GCSANC AWARD NOMINATIONS WANTED

The GCSANC Awards Committee (Steve Carlton, CGCS; Joe Rodriguez, CGCS; John Winskowicz) are currently soliciting nominations for Superintendent of the Year, Excellence in Golf Turf Management, Class F Merit Award, and Distinguished Service Award. Nominations will be accepted by the committee until February 1, 1989 and awards will be presented at the GCSANC Annual meeting in April.

### **SUPERINTENDENT OF THE YEAR**

Criteria: Must be a member in good standing who has contributed in a manner which would be considered above and beyond the normal performance of their duties and is committed to outside activities for the betterment of the association and their fellow superintendents. Must not have received this award during the preceding seven years.

### **EXCELLENCE IN GOLF TURF MANAGEMENT**

Criteria: Must be a member in good standing who has done a superior job of maintaining and grooming their golf course, keeping in mind unusual problem solving, budget, manpower, number of rounds, etc. Must not have received this award during the preceding seven years.

### **CLASS F MERIT AWARD**

Criteria: Must be a Class F member who is deserving because of their dedication and contributions to the betterment of the Association, and who is giving of their time and resources to the Golf Course Superintendent. Must not have received this award during the preceding seven years.

### **DISTINGUISHED SERVICE AWARD**

Criteria: Awarded to an individual who has made exceptional contributions to the Association, the

---

## **A LOOK AHEAD**

Dec. 2 Rancho Canada, Christmas party  
Jan. 9 Crow Canyon CC  
Feb. 20 Almaden G&CC  
March 14 Ridgemark G&CC  
April Palo Alto Muni GC  
May Rossmoor CC  
June Discovery Bay G&CC  
July Sharon Heights G&CC  
Annual Supt./Pro Tourney  
Aug. Salinas Fairways  
Sept. The Villages G&CC  
Oct. Woodbridge G&CC (joint meeting  
with Sierra)  
Nov. Franklin Canyon GC

---

The Association would like to thank Leonard Theis and staff for the wonderful steak lunch and sharing his fine golf course with us for the October meeting.

## MEMBERSHIP NOVEMBER 1988

### MEMBER'S TODAY

#### CLASS A

Richard Lange, Reedsburg CC,  
Reedsburg, Wisc.

#### CLASS A LIFE

Grady Simril

#### CLASS F

Jack Mattson, Golden Bear Equipment  
NEW TODAY-30 DAY WAIT

#### CLASS D

Scott Pajak, Crystal Springs GC, Burlingame

#### CLASS D SUBJECT TO EXAM

J.T. (Ty) Abraham, La Contenta GC  
Valley Springs, CA

---

## OUR HOST AND HIS COURSE

Our host superintendent started in the golf business 8 years ago. Tim was in a turf related field for 17 years before moving here from Michigan. Tim started at Laguna Seca in 1984 as superintendent. After 18 months, he moved to Rancho Canada. Prior to this he was on the crew at Carmel Valley G&CC thru the T.A.R.P. program then moved to Laguna Seca. In November, he will start to put in a new irrigation system with satellite controllers, etc. on the west course. He plans to renovate several ponds in 1989 and work on several tees.

Rancho Canada GC was built in 1971. Both the east and west courses set on 270 acres. It was built by Mr. Nick Lombardo, president of Rancho Canada, Larry Lloyd and an in house construction crew. For our tournament, we will play the west course. The 14th hole, par 4, makes a 90 degree cross over the river to the green. The 11 hole, par 3, is difficult because of 2 bunkers guarding the green and the cottonwoods surrounding the green. A slice is diffently an advantage on this hole. The west course is a par70 and plays an excess of 110,000 rounds per year.

---

## FOR SALE

340 Hustler Lawn mower, Diesel engine with Bac-Vac, used 360 hours.

275 Hustler lawn mower with vacuum system \$2,000. CONTACT Gene Seus (209) 239-7511.

---

New Greensaire 2, purchased 1987, never used, \$4800. CONTACT Dale Mead (209) 571-3302.

---

Verdi-drain, 2 years old-good shape-\$14,000. Call Ed Watson, (415) 935-3332 or (707) 255-6430.

---



As we progressed through the project, we first seeded in early August and finished up our last area to be seeded in mid-September. The time element here was, in my mind extremely critical, primarily due to the wide variance of air/soil temperatures during this period. As an example, our germination period for a blue/rye mix was 8 days early in the project and 18 days at the end. The growth rate matching up closely with germination.

As we bring areas "in-line", we will attempt to open them for play. We are scheduling a re-opening for the first of Spring and it looks as if we're on schedule. I feel that we will have to raise mowing heights slightly the first year of operation to reduce stress on the new plant.

This on-going saga to be continued....

Ken Saki,CGCS

---

## PEOPLE AND THEIR JOBS

### GOLF COURSE SUPERINTENDENT

Leaps tall buildings in a single bound,  
Is more powerful than a locomotive,  
Is faster than a speeding bullet,  
Walks on water,  
Gives policy to God.

### ASSISTANT SUPERINTENDENT

Leaps short buildings with a running start  
and a favorable wind,  
Is almost as powerful as a switch engine,  
Is faster than a speeding BB,  
Walks on water in an indoor swimming pool,  
Talks with God if special request is  
approved.

### CHAIRMAN OF THE GROUNDS COMMITTEE

Lifts buildings and walks under them,  
Kicks locomotives off of the tracks,  
Catches speeding bullets in his teeth and eats  
them,  
Freezes water with a single glance,  
His IS God.

## NOTES ON THE GOLF COURSE CONSTRUCTION SEMINAR

Forty-eight people from all parts of the US and Singapore gathered in Pleasanton for the Golf Course Construction Seminar. We spent 2 full days building a Golf Course from a set of plans provided. We built tees, greens, fairways by grading complete to seeding. We discovered maintenance is more important to the customer than the Golf Course Design. Here are ten factors impacting a golf customer:

1. Aesthetics of entrance way and parking area.
2. Personality behind counter.
3. Cleanliness of Pro shop and rest rooms, golf carts.
4. Condition of practice green and first tee.
5. General condition of greens.
6. General condition of tees.
7. General condition of fairways.
8. General condition of sand traps.
9. General condition of roughs.
10. Design of the golf course.

**MAINTENANCE DOES PAY! LET'S KEEP UP THE GOOD WORK!**

---

## 1988 CHRISTMAS PARTY

December 2, 1988

Rancho Canada

9:30 AM Larry Lloyd Memorial Golf  
Tournament-Shotgun Start

6:30 PM Hosted Cocktails

7:30 PM Steak or Catch of the Day

8:30 PM Awards

9:00PM Dancing until midnight

Cancellation Date- November 23-No  
refunds after this date.

Current USGA or NCGA Handicap card  
needed to compete for prizes.

---

## MYRTLE'S NEWS NOTES

Gary Puckett from Heidleberg GC in Germany reports everything is so green, no water problems here other than too much at times. His problems-strict rules on spraying chemicals. He looks forward to seeing all of us in Anaheim.

Bob Ford CGCS, is the new Supt. at Oak Knoll GC in Ashland Ore. Bob is back at the first GC he started at-He says hello to everyone.