

PRESIDENT'S MESSAGE

by Al Schlothauer (Mike's vacationing)



Michael R. Clark, CGCS

It seems from the turnout at the February meeting at the Blue Dolphin Restaurant that a lot of members are active in the Association, but only on the "golf course". With a 'no scheduled golf' meeting about 30 people were in attendance. A very poor representation by the membership. I would like to thank all who attended, it shows your interest in Your Organization. Thanks also to the Blue Dolphin.

Two guests were also present at the Blue Dolphin. John Zoller, Executive Director of the NCGA, was present at the Board of Director's meeting; and Diana Green, Membership Director of the GCSAA attended the general meeting.

The meeting with John Zoller and the Board of Directors was long overdo. Many thanks to John for taking time out and joining us. Many items were 'aired out' and 'cleared up'. The Superintendent status at Poppy Hills, the on site agronomist, golf course recommendations, were just some of the items covered. The line of communication has become more evident with John's offer for one of our members to sit on the committee for the interviewing and hiring of the Superintendent at Poppy Hills when opened, and to have one or two members at the NCGA regular committee meetings. Communication can be an asset or a detriment, this is a step in the right direction. Thanks again John.

Diana Green, along with Jim Prusa, were in the San Francisco area putting together the hotels for the National Conference in 1986. First indications are everything is looking good and the rates seem as though they will be comparable to Washington D.C. Diana did a great job answering all questions and mentioned that the GCSAA trade show is now in the top 100 (out of 5000) in the U.S. Thanks for attending.

MEETINGS

- APRIL 9 Oakmont CC, Santa Rosa (Annual Meeting)
- MAY 6 Rossmoor, Walnut Creek
- MAY 19-20 Palm Springs, Calif. State Meeting

Naumann's Norcal News

by Don Naumann

BOB DAUTERMAN, former Superintendent at Sequoyah CC in Oakland, has accepted the Superintendent position at San Jose CC.

JOE ROCHA, long time Superintendent and most recently foreman at Menlo CC, has recently retired after over 25 years of service to the club.

RICH EICHNER has accepted the Superintendent position for Discovery Bay GC in Brentwood which is presently under construction. Rich was the Superintendent at Los Angeles CC until October of last year.

TUCO PRODUCTS (Upjohn) has sold off its Agricultural Chemical Division to Noram. Through the reshuffling, Jim Lipari, (No. Calif. Rep for TUCO) has taken early retirement. Don't fear though, he will still be calling on the No. Calif. Superintendents with his own company "Speedy Enterprises" representing Cleary Chemicals, Agriplex, and Clover backlapping compound.

in memoriam

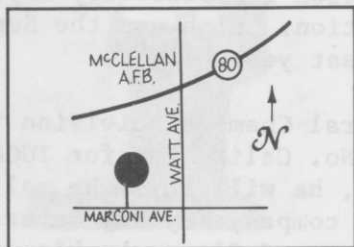
Long time member and close personal friend Jack Hertwig passed away February 26 while on a promotional trip for the US Department of Agriculture in Saudia Arabia. He was promoting the use of turfgrass for athletic fields. Jack worked for Germain's for many years until four years ago he retired, and began woking with International Seeds Inc. promoting their varieties.

Ray Walters lost his fight with cancer on October 4, 1985. Ray was a member from 1968 and worked at Saratoga CC and Los Gatos GC.

ADVANCED DRAINAGE SYSTEMS (ADS) Walt Bray - 6917 Flintwood Way Sacramento 95831	L & S STAKES INC 1098 Alta Avenue Mountain View 94043
BRAMAN PIPE & SUPPLY CO 1525 Walsh Ave Santa Clara 95050	WESTORO DISTRIBUTION, INC 2438 Radley Ct Hayward 94545
BROWN SAND, INC 874 East Woodward Avenue Manteca 95336	WILBUR-ELLIS - Lindsay Jennison P. O. Box 568 Salinas 93902
J. R. SIMPLOT COMPANY P. O. Box 198 Lathrop 95350	HYDRO ENGINEERING - Adrian Bertens Box 505 Phone 415 837-1892 Danville 94526

HOST SUPERINTENDENT - TOM UNRUH

Tom received his B.S. in Park & Recreation Administration from U.C. Davis in 1970. He worked as a Turf Technician for Bill Davis at U.C. Davis doing research on TARP and other projects during 1971 & 1972. In 1972 he became the Golf Course Superintendent at the City of Davis and worked there until 1975 when he moved to Del Paso Country Club.



DEL PASO CC
3333 Marconi Ave., Sacramento, 95821,

Del Paso Country Club was built by W.H. Fowler in 1916. The greens were remodded in the 1960's by W.F. Bell and recently the 4th green was remodded by Gary Roger Baird. Currently Robert Muir Graves is working on a drainage master plan. The course has been the site of four USGA Championships, U.S. Womens Amateur 1957 & 1976, U.S. Womens Senior Championship in 1962, and the U.S. Womens Open in 1982. In fact, the cups and tees will be set up the same as for the last day of the U.S. Womens Open for our golfers. (Good luck)

The course is 6330 yards long and a par 72 (35 front nine and 37 back nine). There are over 100 different varieties of trees on the course - see how many you can identify.

In 1977 the course was the first place to identify Southern Blight in Northern California. Shortly thereafter Tom and Dr. Z Punja did research on the controll of Sclerotium rolfsii and that information was published in 1980 & 1981 and received national recognition. It seems that Tom has a pretty stable crew - the average tenure is 18 years.

BAY IRRIGATION & TURF SUPPLY 2041 Commerce Avenue Concord 94520	EWING IRRIGATION PRODUCTS 2462 Polvorosa Ave San Leandro 94577
CIARDELLA GARDEN SUPPLY, INC Top Dressing-Sand-Gravel 2027 E. Bayshore, Palo Alto 94304	SIERRA PACIFIC TURF SUPPLY 615 Union Ave Campbell 95008
H. V. CARTER COMPANY, INC 1700 East 14th St, Box 12006 Oakland 94604	TURF & INDUSTRIAL EQUIPMENT CO Cushman - Daihatsu - Sanfu 408 727-5660 (collect)

Membership

TAKE IN

Brian Bagley, Hillcrest CC, Los Angeles Class D

NEW TODAY

Raj Mal, Tony Lema GC, San Leandro	Class D
Michael Garvale, Palo Hills CC, Palo Alto	Class A
Phil Dellner, Bunton Company, Shingle Springs	Class F
Bruce Good, Santa Teresa GC, San Jose	Class D
Robert Collishaw, Braman Pipe & Supply, Santa Clara	Class F
Joseph Bell, Harding GC, San Francisco	Class D
Paul Juberg, Auburn Valley CC, Auburn	Class B

EXAMS PENDING

Matthew Parascand, Rancho Bernardo, San Diego	Class B
Peter J. Galea, Crystal Spring GC, Burlingame	Class B
Dennis Plato, Alameda Municipal GC, Alameda	Class A

CHANGE of CLASSIFICATION

Elmer Wellner, retired 1-1-85, Pacific Grove	Class E
Joseph G. Rocha, retired 1-1-85, Redwood City	Class A-Life

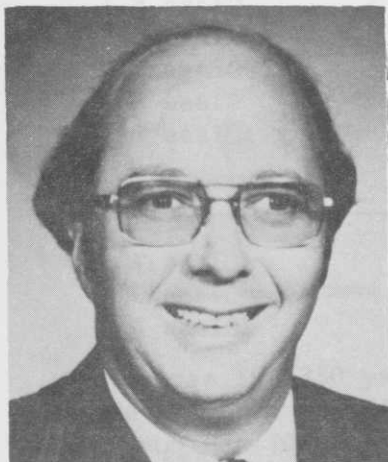
* Happy to hear that Bert Graves is recovering nicely following his surgery.

NAIAD COMPANY - Don Scott 7531 Homewood Court Pleasanton 94566	PACIFIC SOD -- Bill Tavener call me at 408 226-6586 to order call 800 692-8690
NORTHERN CALIFORNIA GOLF ASSOC. P. O. Box NCGA Pebble Beach 93953	PASALICH TRUCKING 707 878-2727 Dillon Beach Sand-Rock-Gravel Dillon Beach 94929
P. E. O'HAIR & COMPANY 1333 Old Oakland Road San Jose 95112	PLANT GRO CORPORATION P. O. Box 703 San Jose 95106



PRESIDENT

**Eugene D. Baston, CGCS
(Alabama)**



VICE PRESIDENT

**Riley L. Stottern, CGCS
(Utah)**



SECRETARY/TREASURER

**Donald E. Hearn, CGCS
(Massachusetts)**



**Dennis D. Lyon, CGCS
(Colorado)
DIRECTOR**



**John A. Segui, CGCS
(Pennsylvania)
DIRECTOR**

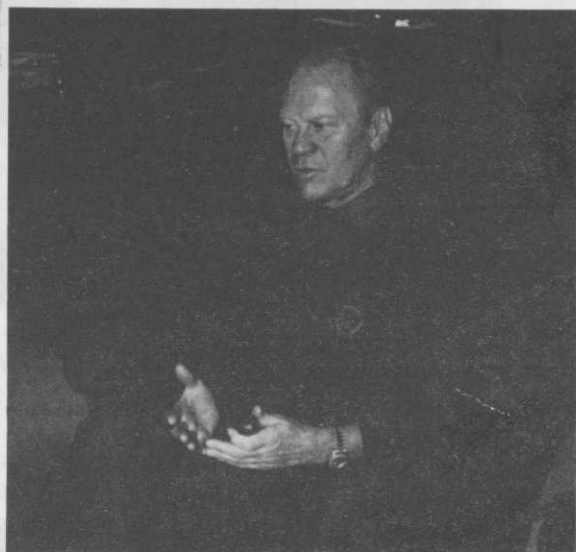


**Gerald L. Faubel
(Michigan)
DIRECTOR**

Current Directors are John E. Lake, CGCS-Ohio and James M. Taylor, CGCS-West Va.



Cliff Wagoner after receiving the Distinguished Service Award!



Old Tom Morris Award Winner - President Gerald Ford.

HOSPITALITY ROOM

THANKS TO OUR CONTRIBUTORS

JENKINS MACHINERY, HI-LO DESERT, NAIAD, J.R. SIMPLOT/BEST, TORO PACIFIC, FORE-PAR, ANDERSON TURF, BUCKNER, WES TORO, JENNISON ENTERPRISES, WESTERN GOLF, INC., INTERNATIONAL SEEDS, GERMAINS SEEDS, MALLINKRODT, E-Z-GO, PLANT GRO CORP., ROBINSON'S FERTILIZER, LOS ARBOLES, ROBERT MUIR GRAVES, SHELTON TRANSFER SERVICE, KEY TURF, WILBUR ELLIS, SAN DIEGO TURF, SOUTHWEST WHOLESALE NURSERY, SIERRA PACIFIC TURF, PACIFIC SOD, RAIN-O-MAT, GCSA NO. CALIF., GCSA CENTRAL CALIF., GCSA SOUTHERN CALIF., AND GCSA SAN DIEGO

PUMP REPAIR SERVICE CO San Francisco, CA 415 467-2150
RAIN BIRD - Phil Vangene 6380 Benner Ct Pleasanton 94566
SCOTTS PROTURF 3785 Vista Drive Soquel 95073
SHELTON TRANSFER SERVICE, INC. Sand Gravel & Top Dressing 1996 Oakland Rd, San Jose 95131
WESTERN FARM SERVICE Fertilizers & Pesticides 38 Beta Ct, Ste B8, San Ramon
WESTERN LAWN EQUIPMENT COMPANY 50 Edwards Court Burlingame 94010



There was an excellent turnout from the No. Calif. area. Here are a few of the locals that made it. Top L - Is that Paul Dias looking at a new race car? Top R - Say Becky Naumann your husband Don looks like Rich Lavine. Bt R - that's Bob Pedersen of H.V. Carter and even editors have to take a load off now and then.

Every one I talked to seem to have a great time from the education, to the trade show, to the banquet. Everyone is looking forward to San Francisco!

P.G. & E. REBATE PROGRAM

PG&E has a new rebate program which covers the repair or replacement of inefficient pumps.

This program is for agricultural and municipal water pumping customers which have deep well turbine or centrifugal pumps.

On average, these water pumps need repair once every six years to maintain energy-efficiency. PG&E will test your pumps to determine the operating efficiency. If your pump needs repair, PG&E will rebate \$0.06 per kilowatthour saved (annual projection) as the result of repairs, up to 40% of the repair cost, to a maximum of \$100,000 per customer.

To be eligible for this rebate, you must have PG&E test your pump prior to making repairs. Any PG&E test performed after January 1, 1984 is acceptable.

As golf course superintendants, you must not only be good water managers, but also must be concerned about energy management. With the rising cost of PG&E power each year, this should be high on your priority list.

To determine which PG&E office to contact in regards to this program, look at the account number on your PG&E bill. There are three letters at the start of your account number, the middle letter determines your area, i.e., NRJ - the R indicates your area.

In area R & V contact the San Jose office at 408-298-3333, extension 385, Robert Nagata.

In area J contact the Stockton office at 209-942-1479, Janet Blume.

In area N contact the Sacramento office at 916-383-4141, Mike Noggle.
DO IT TODAY!!

David Archer
PUMP REPAIR SERVICE COMPANY
San Francisco

AUTOMATIC RAIN CO - Willard Hayes 4060 Campbell Avenue Menlo Park 94025	GOLFCO - John Engen P. O. Box 501 Chico 95927
A. L. CASTLE OF STOCKTON, INC. 5700 Cherokee Road Stockton 95205	INTERNATIONAL SEEDS INC. 820 First Street Halsey, Oregon 97348
COUNTRY CLUB SALES, INC. 3381 Vincent Drive Pleasant Hill 94523	JENKINS MACHINERY COMPANY 1848 Arnold Industrial Place Concord 94520