

## PRESIDENT'S MESSAGE



BOB FORD

During the last year, the name "California Golf Course Superintendents Association" has been mentioned at nearly every monthly meeting and several times in the association newsletter. What is significant about this association? To the older members, this organization is a facelifted version of the "California Federation of Golf Course Superintendents Associations", but to the newer members, this seems like just a new organization.

The Calif. Federation Association was adopted June 1, 1964. Article I Section 2 reads "The purpose of the Federation shall be to combine the efforts of the golf course superintendents and their local associations for more efficient collection and dissemination of knowledge and information in order to promote better maintenance and construction of golf courses, to consolidate educational meetings and conferences and to enhance the efficiency, dignity, prestige and welfare of the golf course superintendent". This objective of the Federation was so applicable, that it was used almost word for word for the By-Laws of the new California Association.

As many associations do, the Federation met with several problems and pitfalls, which are better left unsaid, and ceased to be an active, viable organization. Several years went by until last year, representatives of the six local state chapters decided to reinstate the association with a new name and By-Law changes but keeping the same articles of incorporation. After a year's hard work, the California Golf Course Superintendents Association's new By-Laws were adopted at the Annual Meeting at Singing Hills Country Club, May 15th, 1983. This new association is comprized of all A & B members of all six local California chapters, plus it is an affiliate chapter of the Golf Course Superintendents Association of America.

In my opinion, this association will perform three important functions:  
1. Provides a vehicle to exchange common information  
2. A social gathering for people with the same goals  
3. A combined national voting block.  
Functions one and two are quite simple while the voting block might need some explanation. At no time do you ever lose your right to individually vote in a national election. If you do not want to vote individually, you can give your vote to your local chapter representative to vote as a block chapter vote, which has been one the last several years. Now

(cont.) on page 3.

with a nationally affiliated state chapter, there is a third voting option. An affidavit can be signed over to a state representative who will carry the entire state block vote to the national convention and vote it as seen fit by the majority. This may seem very confusing, but a large block of state votes might carry some "clout" on critical national issues.

### B O A R D B R I E F S

#### New Members - Class D

Ken Schwark	415-223-6675	David C. Vaught	415-726-9227
3900 Giant Road		Box 654	
Richmond, CA 94806		Half Moon Bay, CA 94019	
Richmond CC,	415-232-1080	Shoreline GC,	415-968-9032

#### Class- F

Thomas Comalli	916-722-4225	Timothy Carpenter	415-682-0469
6832 Woodlock Way		2520 Walters Way Apt 16	
Citrus Heights, CA 95610		Concord, CA 94520	
O. M. Scotts & Sons	916-722-4225	E-Z-Go Textron, Inc.	415-785-0712
	Kent Myers		408-629-8141
	5771 Cohasset Way		
	San Jose, CA 95123		
	E-Z-Go Textron, Inc.		415-785-0712

Pending 30-day waiting period  
Class D

James E. Pryor	William Andrade
Sequoia Wood CC, Arnold	Sunol Valley GC, Sunol

Transfer to Class A-Tarsem Singh, Pittsburg G&CC (subject to exam)

Reinstated to Class A-John Flachman, Bennett Valley GC

Ray Story, Green Valley CC, Suisun, Passed Class B exam.

Golf-Professional playing in the Supt./Pro Tourn. need not be card carrying PGA Pro.

State Ass.- Bob Ford receiving support around nation for nomination to GCSAA Board.

National Ass.- James McLoughlin (GCSAA Executive Director) has announced his intention to resign, effective Sept. 1, 1983.

cont. page 4

PRESIDENT'S MESSAGE

Communications-Letter read supporting Warren Bidwell(our guest speaker) as a nominee for the GCSAA Distinguished Service Award.

Gale Love brought up the problem of disregard for golf cart useage rules. PLEASE OBEY all cart rules for we are guests of each club and our etiquette reflects on us all.

meetings

- AUGUST 9 Marin Country Club, Novato
- SEPTEMBER 12 GCSA of Northern California - Sierra-Nevada combined  
Reno, Nevada
- OCTOBER 14 Mt. St. Helena, Calistoga
- NOVEMBER 10 Stanford, Palo Alto
- DECEMBER 2 Rancho Canada Golf Course, Carmel ( XMAS PARTY)
- JANUARY 14 Green Valley Country Club, Suisun

+++++  
 + THANK YOU Joe Rodriguez and ROSSMOOR for hosting our meeting. +  
 +++++

\*\* Be a Certified Golf Course Superintendent! Plans are still in the \*\*  
 \*\* works for study classes and a test this fall. The more we have \*\*  
 \*\* the better-the expense comes down. Contact Bob Ford at 415-948-6232 \*\*  
 \*\* or 408-281-3312 if you are interested. \*\*

AUTOMATIC RAIN CO - Willard Hayes 4060 Campbell Avenue Menlo Park 94025	BRAMAN PIPE & SUPPLY CO 1525 Walsh Ave Santa Clara 95050
BAY IRRIGATION & TURF SUPPLY 2041 Commerce Avenue Concord 94520	BROWN SAND, INC. 874 East Woodward Avenue Manteca 95336
KEITH BRAMAN, IRRIGATION CONSULTANT 21535 Stage Coach Road Los Gatos 95030	H. V. CARTER COMPANY, INC. 1700 E. 14th St -P.O.Box 12006 Oakland 94604

# Naumann's Norcal News - by Don Naumann

Bob Cox has accepted the superintendent's position at Tilden Park Golf Course. Tilden is owned by East Bay Regional Parks and is leased by California Golf and Tennis. Bob was the superintendent at Vallejo Golf Course.

Paul Dias, superintendent at Palo Alto Municipal Golf Course, is now in the construction phase of a new maintenance shop. It should be completed this month.

A. L. CASTLE OF STOCKTON, INC. 5700 Cherokee Road Stockton 95205	CHEM-SPRAY COMPANY P. O. Box 7805 Stockton 95207
COUNTRY CLUB SALES, INC. 3381 Vincent Dr Pleasant Hill 94523	DUKE EQUIPMENT & IRRIGATION INC. 2344 Auburn Blvd Sacramento 95821
EL CAMINO CROP SUPPLY, INC. 37342 Blacow Road Fremont 94536	EWING IRRIGATION PRODUCTS 2462 Polvorosa Ave San Leandro 94577

TURF and LANDSCAPE Field Day - sponsored by University of California Co-operative Extension Program for all turf and landscape people. Thursday - July 21, 9:00 - 12:00 A.M., at the University of Calif. Deciduous Fruit Field Station - 125 N. Winchester Blvd., San Jose. No registration or fees. PCA credits announced at meeting. More information call Ali Harivandi (415-881-6341)

## GRASS ROOTS INVITATIONAL

Friday, August 26, 1983 at the San Jose Country Club.

Schedule: 10:00am Registration and Buffet Brunch

11:30am Blast-Off

5:00pm No Host Cocktails & Awards

Tax deductible Contributions: Playing Sponsor - \$100.00

Non-Playing Sponsor - \$25.00

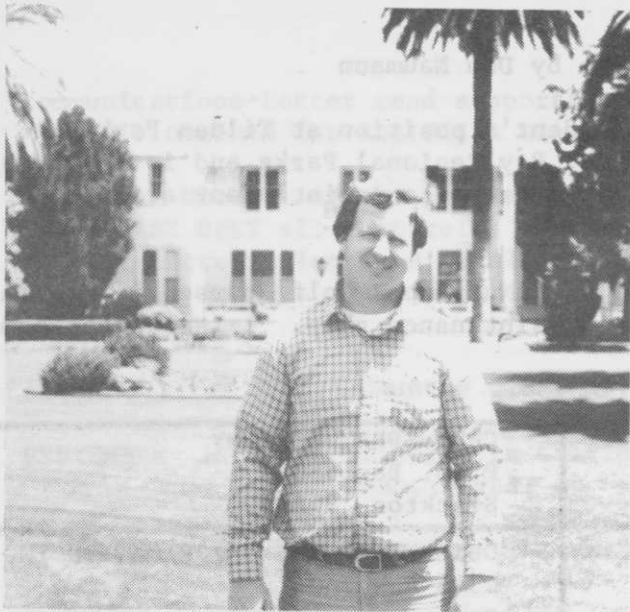
Regular Entry - \$75.00

The Grass Roots Invitational is a golf tournament to benefit turfgrass research. All proceeds go to the Northern Calif. Turfgrass Council Research Committee for distribution throughout the turfgrass industry.

Information: Steve Carlton, San Jose CC, 15571 Alum Rock Ave. San Jose.

408-258-4855

95127



HOST Brian Morris  
and the clubhouse

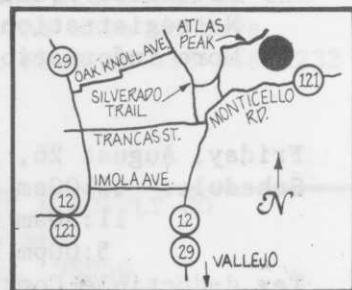
Brian is a graduate from Cal Poly Pomona with a B. S. in Park Administration. He did his internship at Riviera Country Club and worked at Rancho California (now Rainbow Canyon Golf Resort) in Temecula while attending college. He became the Assistant Supt. at Calabassas CC in Sept. of 1978 and Superintendent at Candlewood CC in Whittier in March of 1979. It was then on to Silverado in May of 1980 as the Assistant. Brian became the Superintendent in October of the same year.



**SILVERADO**  
COUNTRY CLUB & RESORT

AN AMFAC RESORT

Silverado Country Club was built in 1967 and was a Robert Trent Jones design. The South Course, which you will play is 6213 yards from the white tees and 6632 from the blues. There is primarily bentgrass and ryegrass in the tees, fairways, and roughs with a bent and poa mix on the greens. Water comes into play on 5 of the holes.



**SILVERADO CC & RESORT**  
1600 Atlas Peak Road, Napa,



NORTHERN CALIFORNIA GOLF ASS'N P. O. Box NCGA Pebble Beach 93953
J. R. SIMPLOT COMPANY P. O. Box 198 Lathrop 95350
P. E. O'HAIR & COMPANY 1333 Old Oakland Road San Jose 95112
PLANT GRO CORPORATION P. O. Box 703 San Jose 95106
RAINBIRD SALES INC.- Turf Division 20830 Chester St Castro Valley 94546
REYNOLDS SALES - Steam Cleaners 1066 Polk Street Salinas 93906

7th Hole Par 3

GUEST SPEAKER: Gary Roger Baird

of Gary Roger Baird Inc. whose offices are located in Los Altos, has been in the golf course architecture business for 15 years, with 10 of those years being a Senior Designer with Robert Trent Jones.

He has done several projects in California, Montana, Tennessee, Louisiana, and in Hawaii. His work deals mostly with the remodeling and reconstruction of greens and irrigation systems on famous golf courses, such as, Belle Meade Country Club in Tennessee which was featured last year in the Golf Course Management Magazine.

Currently doing work at Pasatiempo and in Alabama, Gary has been selected to do 2 new courses in South America, with one being in Brazil.

His topic will be master planning for golf course greens reconstruction on famous older courses.

\*\*\*\*\*

G O O D L U C K to all in the Supt/Pro Tournament!

GOLF COURSE SUPERINTENDENTS ASSOCIATION  
OF NORTHERN CALIFORNIA

1983 Superintendent/Pro Tournament

DATE - July 13, 1983 - Wednesday  
 PLACE - Silverado CC, 1600 Atlas Peak Rd, Napa  
 HOST - BRIAN MORRIS, Golf Course Superintendent  
 STARTING TIME - 9:30 a.m. Shotgun  
 ENTRY FEE - Superintendent, Suppliers, Guest \$40.00  
 - Professionals \$45.00

```

+-----+
+ Add $5.00 to your entry if not postmarked before July +
+ 1st - Entries will not be accepted after July 8th +
+-----+
    
```

Type of Play - Superintendent/Pro 2-Man Team 1 Best Ball w/Handicaps  
 - Superintendent Individual Low Net  
 - Superintendent Low Gross  
 - Pro Low Gross - purse to be based on entries  
 - Suppliers Low Net  
 - Guest Low Net  
 - 4 Man Team 1 Best Ball w/Handicaps  
 - Calloway

HANDICAPS----- Make sure your N.C.G.A. Handicap card is up-to-date  
 Maximum Allowable Handicap is 20 Strokes  
 Each 4-some MUST have a GCSA of Northern California  
 member in it

LUNCH - 2:00 p.m. Main Dining room

Program - Gary Roger Baird, Golf Course Architect

MAKE CHECK PAYABLE TO G.C.S.A. OF NORTHERN CALIFORNIA  
 1233 Kansas Avenue, Modesto, CA 95351

Superintendent or Supplier	Current HDCP
Club or Business	
Professional	HDCP
Guest	HDCP
Guest	HDCP

PLEASE PRINT AND RETURN

# Golf

By Michael R. Clark, CGCS

R E M E M B E R get your entry in on time to participate in the Superintendent-Professional Tournament at Silverado CC. Avoid the late charge.

RESULTS at Rossmoor CC

Low Net

Bill Creig 66  
 Tarsem Singh 68  
 Bob Ludwig 68  
 Jim Ross 68  
 Roy Yokote 68  
 Jim Andrews 69  
 Bob Ford 69  
 Tom Thatcher 69  
 George Santana 70  
 Resham Singh 70

Low Callaway

Murray Nonhof 70  
 George Bell 73  
 King Ewing 74  
 Bob Wright 74  
 Moti Baru 74

Low Gross

Frank Castellotti 72  
 John Winskowicz 76

FERRY-MORSE SEED COMPANY P. O. Drawer 7274 Mountain View 94042	GOLFCO - John Engen P. O. Box 545 Graeagle 96103
GOLF CAR WEST - CUSHMAN 2715 Lafayette Street Santa Clara 95052	INTERNATIONAL SEEDS INC. 820 First Street Halsey, Oregon 97348
JENKINS MACHINERY COMPANY 1848 Arnold Industrial Place Concord 94520	NAIAD COMPANY - Don Scott 7531 Homewood Court Pleasanton 94566



WHAT DO SUPERINTENDENTS DO IN THEIR FREE TIME??

They try to fly automobiles, of course No, I mean race them. Not so with Paul Dias, Superintendent at Palo Alto Muni. --- It seems that June 11th Paul tried to fly his race car at the Santa Clara Fairgrounds. He tried forward, backwards, upside down, sideways, and then tried them all again, but who knows in which order.

Luckily Paul wasn't injured seriously, which we are thankful. Best of luck in your next race and mend those bumps and bruises for the tourney.



GOLF COURSE SUPERINTENDENTS ASSOCIATION  
OF NORTHERN CALIFORNIA

Statement of Cash Receipts, Disbursements, and Balances

February 1, 1982 to January 31, 1983

Cash Balance February 1, 1982		2,866.25
Income	Check Interest	352.65
	Dues	15,600.00
	Meeting	12,181.21
	Newsletter	1,445.00
	Miscellaneous	542.96
		<u>30,121.81</u>
		32,988.06

Cash Disbursements-Meeting		13,555.20
	Newsletter	1,561.25
	Office	7,852.86
	Research	100.00
	Miscellaneous	182.50
		<u>23,251.81</u>
		9,736.25

Statement of Assets & Liabilities - January 31, 1983

Assets		
Cash in checking account		9,736.25
Cash in checking, savings		2,000.00
Cash in savings		2,462.28
Petty Cash		50.00
		<u>14,248.53</u>

Liabilities		None
Net Worth		14,248.53



4,301.11

2,301.11

161.17

2,462.28