



BOB FORD

PRESIDENT'S MESSAGE

All too often people make judgements, accusations, or criticize the performance of others without having all the facts. Such has been the case with Cliff and Myrtle Wagoner. Through the years I have heard the comment " Why do Cliff and Myrtle run the Association?"

The facts are: Myrtle has been a paid executive secretary for several years and even if she was not paid, she would probably help out because this Association has to do with Cliff's livelihood.

Cliff has held national offices including President and has been President of our local three times. These people hold these positions because of the backing and elections by their peers. They are not arbitrarily running the Association but have been placed there by the Membership because of their knowledge and expertise in their given field.

If you were to go to the Wagoner home, you would find a room has been set aside for our Association business and records. These records are a complete historical collection of the Northern California Chapter. Who else but these two people have given the chapter continuity, longevity and dedication! Look at the list of chapter past Presidents. Most of them are not even active members anymore.

For those who are doubters, I hope you come forth and help out if and when this exceptional couple decide to retire. My hat goes off to a job well done.

meetings

- | | | |
|-----------|----|--|
| SEPTEMBER | 12 | GCSA of Northern Calif. - Sierra-Nevada combined
Reno, Nevada |
| OCTOBER | 14 | Mt. St. Helena, Calistoga |
| NOVEMBER | 10 | Stanford, Palo Alto |
| DECEMBER | 2 | Rancho Canada Golf Course, Carmel (Christmas Party) |
| JANUARY | 14 | Green Valley Country Club, Suisun |

Naumann's Norcal News - by Don Naumann

Jody Picconi is the new Superintendent at Riverside GC in Coyote. Ken Sakai has moved his main office to Franklin Canyon GC in Rodeo. Riverside and Franklin Canyon are both leased by American Golf Corporation, formerly known as California Golf and Tennis. American Golf not only has golf courses in California, but courses in New York, Maryland, Texas, New Mexico, Arizona, and Nevada.

Zeke Avila was recently seen laying sod at Castlewood Country Club. Due to storm damage this winter, half of one green on the upper course dropped two feet. That green had to be rebuilt and new sod laid.

"ATTENTION BOARD MEMBERS" - There will be a meeting of our officers and directors with the NCGA on Sept. 14, 1983 at U.C. Davis.

CONGRATULATIONS

Jim and Karen Prusa are the proud parents of Natasha Clare, born June 9, 1983 and weighing 7lb. 9oz.



RETIRED - is being able to kick back and and take it easy for a change. Now that Dick Fassio is retired he can do both and can also tell some stories, like the one about the golfer who sliced the ball from the tee over the hill into the valley. Hearing a yell, he dashed over the brow of the hill to see a man lying unconscious.

When he ran up to the prone man, the stricken fellow opened one eye and said calmly, "I'm a lawyer and I'm going to sue you for \$5,000."

"I'm so sorry," the other replied, "but I did yell 'fore.'"

"I'll take it," said the lawyer.

"In Memoriam" - Ray H. Gerber passed away recently in Glen Ellyn, Ill. Ray was president of the GCSAA in 1950.

Golf

by Michael R. Clark, CGCS

A full field of 144 players showed up for our 6th annual Supt-Pro Tournament. There were a total of 40 Supt-Pro teams involved in the competition. With interest like this, our Supt-Pro Tournament should be a success for years to come.

Brian Morris and the staff at Silverado are to be congratulated for a job well done. Also Pros Dean James and Mike Jonas, along with Howard Fisher are thanked for helping with the scoring.

Suggestions for next year are already being accepted, so don't be silent, "speak up!"

SUPT/PRO DIVISION

1st	Jim Andrews & Art Wilson	61
2nd	Ron Forsyth & Mike Cook	62
3rd	Sam Singh & Dan Ross	63
4th	Tim Sedgley & Mike Mattingly	64
5th	Mike Clark & Dean James	64
6th	Mulkh Raj & Doug Brooke	64
7th	Jody Picconi & John Shanley	64

PRO INDIVIDUAL DIVISION

1st	Don DeLorenzo	70
2nd	Gary Plato	71
3rd	Bob Borowicz	72
	Al Braga	72
4th	Doug Brooke	73
5th	Dan Ross	74
	Mike Mattingly	74

SUPPLIERS NET DIVISION

1st	Jim Schimdt	85-10=75
2nd	Bob Holland	94-17=77

CALLOWAY DIVISION

1st	Dave Archer	75
2nd	Adrian Bertens	77

SUPT GROSS DIVISION

1st	Ed Stocke	73
2nd	Mike Clark	76

SUPT NET DIVISION

1st	Sam Singh	77-11= 66
2nd	Pete Sandoval	91-20= 71

GUEST NET DIVISION

1st	Vic LoBue	65
2nd	Steve Harker	67

4-MAN TEAM DIVISION

1st	Jody Picconi Team	56
2nd	Jim Ross Team	57
3rd	Sam Singh Team	57



Host-Brian Morris



Registration



Warming up-Putting Green



Tourn. Dir. - Mike Clark ready on # 1



Lunch & Cocktails



Guest Speaker-Gary Roger Baird

A LOOK at some of the winners at Silverado!!



1st Place Supt-Pro
JIM ANDREWS & ART WILSON



1st Place Calloway
DAVE ARCHER

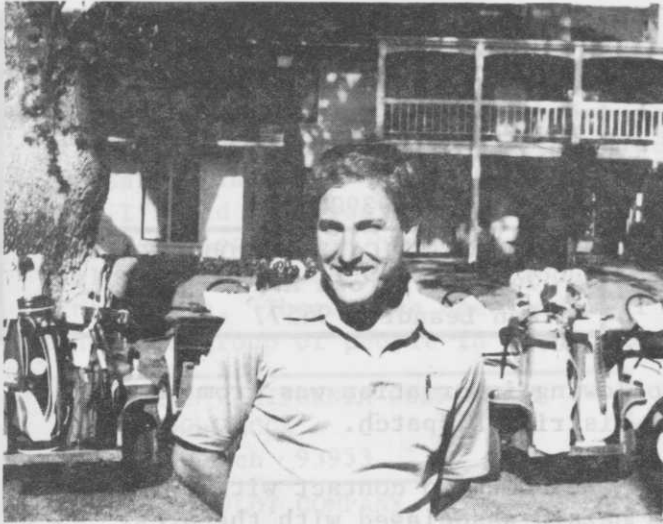


1st Place 4-Man Team
JODY PICCONI TEAM from RIVERSIDE

A special thanks again to Brian Morris and the entire staff at Silverado for hosting the biggest turnout ever for the tournament.

THANK YOU MIKE CLARK for your hard work as tournament chairman. An outstanding job was done by you and your staff.

HOST SUPERINTENDENT

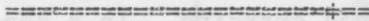


RICHARD LAVINE

Richard Lavine was a graduate of Cal Poly, Pomona in 1975. He has degrees in both Park - Administration and in Ornamental Horticulture. Rich was the Superintendent at Spyglass Hill GC and Castlewood Country Club before taking over at Marin Country Club. Rich has been at Marin Country Club for a little over 1 year.

Marin Country Club is about 6,200 yards, par 72, when measured from the white tees. Even though the course is not long, it is tight, with water and/or out of bounds on every hole. The club will be celebrating its 25th anniversary later in the year.

Please return your reservation card! Remember to obey all golf cart rules!



GUEST SPEAKER: Mr. Donald Hoos - Regional Director (Western Region) USGA.
"Topic" - Golf Course Drainage

AUTOMATIC RAIN CO - Willard Hayes 4060 Campbell Avenue Menlo Park 94025	BRAMAN PIPE & SUPPLY CO 1525 Walsh Ave Santa Clara 95050
BAY IRRIGATION & TURF SUPPLY 2041 Commerce Avenue Concord 94520	BROWN SAND, INC. 874 East Woodward Avenue Manteca 95336
KEITH BRAMAN, IRRIGATION CONSULTANT 21535 Stage Coach Road Los Gatos 95030	H. V. CARTER COMPANY, INC. 1700 E. 14th St -P.O.Box 12006 Oakland 94604

Eutrophication: a condition occurring in bodies of water where the water is deficient in oxygen and aquatic plants are abundant. This process is accelerated by the surface runoff of nutrients such as nitrogen and phosphorus.

Safety tip!

A. L. CASTLE OF STOCKTON, INC. 5700 Cherokee Road Stockton 95205	CHEM-SPRAY COMPANY P. O. Box 7805 Stockton 95207
COUNTRY CLUB SALES, INC. 3381 Vincent Dr Pleasant Hill 94523	WILBUR-ELLIS - Specialty Ag P. O. Box 568 Salinas 93902
EL CAMINO CROP SUPPLY, INC. 37342 Blacow Road Fremont 94536	EWING IRRIGATION PRODUCTS 2462 Polvorosa Ave San Leandro 94577

The following information was from the May issue of the Berryessa Union School District Dispatch.

Electricians, welders, or any worker who comes in contact with electric arcs should be aware of a dangerous hazard associated with the arcs.

Two workers were permanently blinded recently after working with the arcs, according to a report from the Commonwealth Electric and Electrical Workers Local Union.

In one incident, a worker threw an electric switch into a closed position which produced a short-lived sparking. In a separate incident, a welder flipped open the colored lens of his welding shield to better position the welding rod. He inadvertently struck the metal to be welded, producing the arc.

Both men were wearing contact lenses. On returning home from work they removed the contacts and the cornea of the eye was removed with the lens, causing permanent blindness.

The electric arc generates microwaves that instantly dry up the fluid between the eye and the lens, causing the cornea to be bonded to the lens. This bonding is painless and the individual never knows there is an injury until removing the contact.

Since this phenomenon was unknown, no federal or state safety and health agency has regulations on this matter, but it is under investigation. In the meantime, it is recommended that no contact lenses be worn by anyone who is potentially subject to an electrical sparking situation.

editor's note . . .

In recent months the GCSA of America has had some interesting problems. The main one being the resignation of the Executive Director. The reasons given left many people pondering the situation. I know many of you receive the magazine Weeds, Trees, and Turf and if you have read the latest issue, noticed the two articles dealing with the GCSA of America. One of the articles brought out some rather revealing facts.

But I would like you to be concerned with the first article which describes our Association and how Professional we can be and are. Superintendents all over the country do care about GCSAA and about their fellow Superintendents. There have been and will always be some hard times, but with the fine group of people in the GCSAA we will weather any and all storms.

NORTHERN CALIFORNIA GOLF ASS'N
P. O. Box NCGA
Pebble Beach 93953

J. R. SIMPLOT COMPANY
P. O. Box 198
Lathrop 95350

P. E. O'HAIR & COMPANY
1333 Old Oakland Road
San Jose 95112

PLANT GRO CORPORATION
P. O. Box 703
San Jose 95106

RAIN BIRD - Phil Vangene
6380 Benner Ct
Pleasanton 94566

REYNOLDS SALES
1066 Polk Street
Salinas 93906



THE PENINSULA TIMES TRIBUNE, Tuesday, August 31, 1982—F-1

B. C.

By Johnny Hart



A GOLFER'S BIBLE

A ball striking a tree while in flight shall be deemed not to have struck a tree unless the player making the stroke declares that it was deliberately aimed for. In this case, play shall cease momentarily while his partners congratulate him on his marksmanship. But if the player attests in good faith that it was in no sense his intention to strike the tree, then it is obviously a piece of bad luck that has no place in a scientific game. No penalty shall accrue to the player, who is therefore permitted to estimate the distance his ball would have traveled, and to play the ball from that position.

FERRY-MORSE SEED COMPANY P. O. Drawer 7274 Mountain View 94042	GOLFCO - John Engen P. O. Box 501 Chico 95926
GOLF CAR WEST - CUSHMAN 2715 Lafayette Street Santa Clara 95052	INTERNATIONAL SEEDS INC. 820 First Street Halsey, Oregon 97348
JENKINS MACHINERY COMPANY 1848 Arnold Industrial Place Concord 94520	NAIAD COMPANY - Don Scott 7531 Homewood Court Pleasanton 94566

DO YOU REMEMBER?

Axil - the point where the leaf grows from the stem.

Auricles - projecting arms of a grass leaf, located at the collar, which may or may not clasp the stem.

Whorl - a circular arrangement of three or more leaves or flowers around a single plant

Turgidity - the expansive force in a blade, caused by the presence of water, permitting it to stand erect.

Pustules - a small blister-like elevation found on grass blades and generally associated with fungi.

Petiole - the stalk which supports the leaf.