

N O T E S from Stan

Our meeting in Stockton has to stand out as one of, if not, the finest of the year. The course was in super shape as I can testify, because I saw it all from one side of the fairway to the other. The lunch was the best we have had this year. I think that if we had an election for host of the year, Kaz would no doubt be the winner. Thanks for a great meeting Kaz.

John Engen, our program chairman, has done no less than a superb job this year. The Stockton program was no exception. We had a fine program with good speakers who had answers to all questions. Keep up the good work, John.

There was one thing that was on everyones mind. It was the loss of our friend Lee Huang. I will not dwell on this subject for it is a sad one. I for one will miss Lee a great deal.

Our next meeting will be held in Red Bluff, you may ask where is that. Red Bluff is the home of Steve Flatt, Golf Course Superintendent of Wilcox Oaks Golf Course. Steve is a new member of our Association. Wilcox Oaks is where I started in the golf course business. I had the pleasure of having Steve work as my assistant at Wilcox Oaks and understand he is doing a very fine job since my departure. Wilcox Oaks is one of the best nine hole golf courses in the North State and if you do not attend this meeting, you will be doing yourself a great disservice. Let's all show a new member we can support him and his meeting.

Stan Burgess, Claremont C.C, Oakland

Wilcox Oaks Golf Club - John Engen, Butte Creek C.C., Chico

The sixty acres of gently rolling land on which Wilcox Oaks Golf Club is built is a gift, willed to the club by Grant Wilcox, a man who loved his community and the game of golf.

In the early twenties he and a few other enthusiasts began playing on unwatered fairways and gravel and sand greens; a crude course, but one which now promises to develop according to his long range plans.

After the death of Mr. Wilcox in 1957, a well was dug and the first nine holes of grass were planted. His heirs have shown a continuing interest in this memorial to him.

It is part of the clubs plan to continue this development until they are possessed of an 18 hole golf course and all its adjuncts. It is the clubs aim to perpetuate in beauty, prosperity and a spirit of fairness this project, begun in the foresight and generosity of the founder.

Steve says that construction of a 22 acre foot lake has just been completed. The lake is to be used to improve the watering system on the existing nine and will have storage to take care of the new nine which

is in the planning stage.

#####

KNOW YOUR HOST SUPERINTENDENT Steve Flatt started his career in golf course maintenance at the Butte Creek Country Club in Chico while still in high school. Steve worked after school, Easter vacations, summers, etc. under John Engen, Sr. After graduation in February 1972, Steve went to work as a permanent member of the Butte Creek crew. In September 1972 Steve accepted the job as assistant superintendent under Stan Burgess at Wilcox Oaks Golf Course in Red Bluff. Also in September Steve married a pretty little gal.

In March 1973 Stan Burgess left Wilcox Oaks to become superintendent at Claremont Country Club in Oakland, and Steve took over as superintendent. I might add, Steve was 19 at the time, he is now 20. Steve had been a superintendent two days when he went to Asilomar for a week and attended the Superintendents Institute. Steve says that he feels that this really helped him to better understand the new job he had just undertaken.

Steve kept the course looking just great all summer and that is an accomplishment in Red Bluff. Congratulations to you Steve and as a new member welcome to the Association. Steve's right hand man, John Engen, Jr. is also a new member of our Association. Seems like I've heard that name before. See you in Red Bluff in November.

John Engen, Sr., Butte Creek C.C. Chico

#####

W A N T E D

A S S I S T A N T S U P E R I N T E N D E N T

Contact Jim Ross, 215 Mary Alice Drive, Los Gatos 95030

Golf Course Superintendent - The Villages, San Jose

PROFESSIONALISM - This is a word that has been used a great deal in our Association in the past few years. The following letter was written by one of the finest professionals in our business. I feel that if we would all follow this man's example we would benefit a great deal from it.

From the office of Public Service Department

Walnut Creek, California 94596

October 1, 1973

Mr. L. V. Smith, President
World Land & Investment Co.
Cameron Park
P. O. Box 158
Shingle Springs, Calif. 95682

Dear Mr. Smith:

As a property owner in Cameron Park I congratulate you in putting together such a fine golf tournament and in being able to bring such a number of prestigious women golfers to your course. Of course I also want to thank you for sending me a copy of the SACRAMENTO UNION special.

As an ex-golf course superintendent, however, I must say, "For shame!" One of the most important men on your staff, your golf course superintendent, was never even mentioned in the entire paper. What an insult to a fine professional. This is unfortunately too common an oversight. He is expected to give you a course in superb condition. This is taken for granted. He has to put up with the horrendous damage done to his course as a result of a tournament of this magnitude. This too is taken for granted. Yet, should there be one spot of brown on any green, he will be criticized severely. This is a very unfair treatment for any professional, and it upsets me to see Cameron Park guilty of this oversight.

As a suggestion, you could make amends by featuring your superintendent on television and making special mention of him and his work.

Sincerely yours,

Signed Y. LEE HUANG

Y. LEE HUANG

Director

YLH:nh

Many times I have read articles in golf magazines giving the professional credit for the condition of the course. These articles are wrong. We are the ones who should have the credit. The only way we are going to get the credit we deserve from magazines of this type is to make ourselves known to the people who write and edit these articles. Let's all continue in Lee's footsteps, when you see an article of this type, don't hesitate, write.

I N M E M O R Y



Y. L E E H U A N G

KEEPING GOLF COURSE LENGTH CONSISTENT

Clifford A. Wagoner, CGCS
Del Rio Golf & CC, Modesto

A committee from the Northern California Golf Association is continually rating golf courses so handicaps will be equitable throughout Northern California. The ratings are based on yardage, wind conditions, hazards and other physical conditions which effect the playability of holes on the course. The most important consideration is yardage. Before the rating teams play the course it is measured from tee to the center of the green and permanent markers are placed on the tee from the spot from which the measurement is made. For regular play it is important to place tee markers and locate pin placement so as to maintain the yardage of each hole as close as possible as it was when it was rated.

This can be accomplished by developing a system for the person who set the cups and places the tee markers. A simple system can be as follows:

Set up three cards and alternate setting each time tees and greens are changed.

# 1			# 2			# 3		
Hole	Tee	Green	Hole	Tee	Green	Hole	Tee	Green
#1	Front	Back	#1	Center	Center	#1	Back	Front
2	Center	Center	2	Back	Front	2	Front	Back
3	Back	Front	3	Front	Back	3	Center	Center
4	Front	Back	4	Center	Center	4	Back	Front
5	Center	Center	5	Back	Front	5	Front	Back
6	Back	Front	6	Front	Back	6	Center	Center

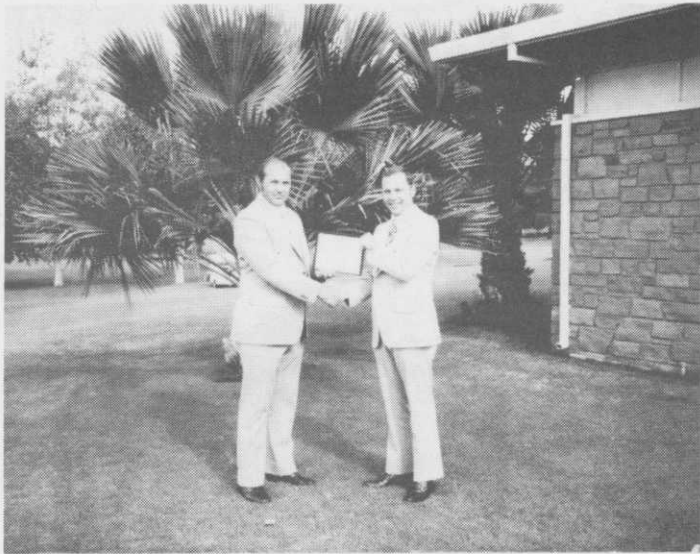
Continue on for the entire 18

You as the golf course superintendent play a vital role in helping your golfers maintain handicaps that will allow him to compete equitably on any course rated by the United States Golf Association regulations.

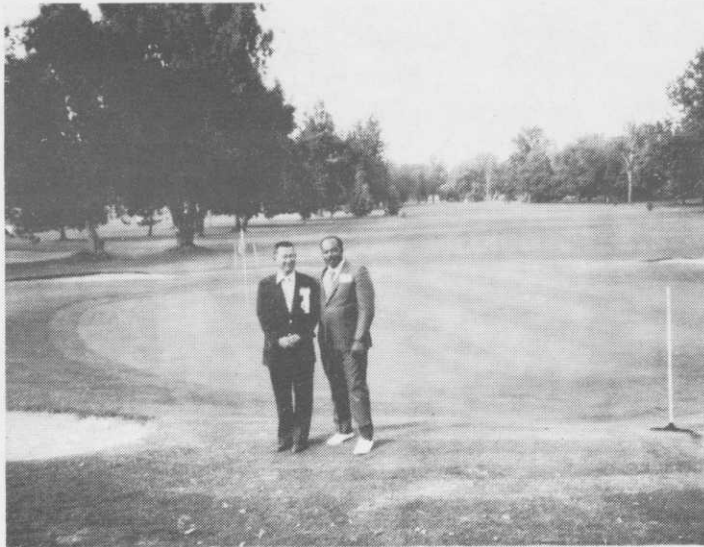
#####

Rhizome -- An underground, rootlike stem; underground creeping stem; a rootstock.

Stolons - Creeping, trailing or reclining stems or runners above ground which may produce roots or new stems and become independent plants.



Jim Ross awarding Mr. Doyle Jacklin "Certificate of Appreciation"



Host Kaz Maseba with Grady Lee Simril, East Bay Regional Parks
Berkeley