

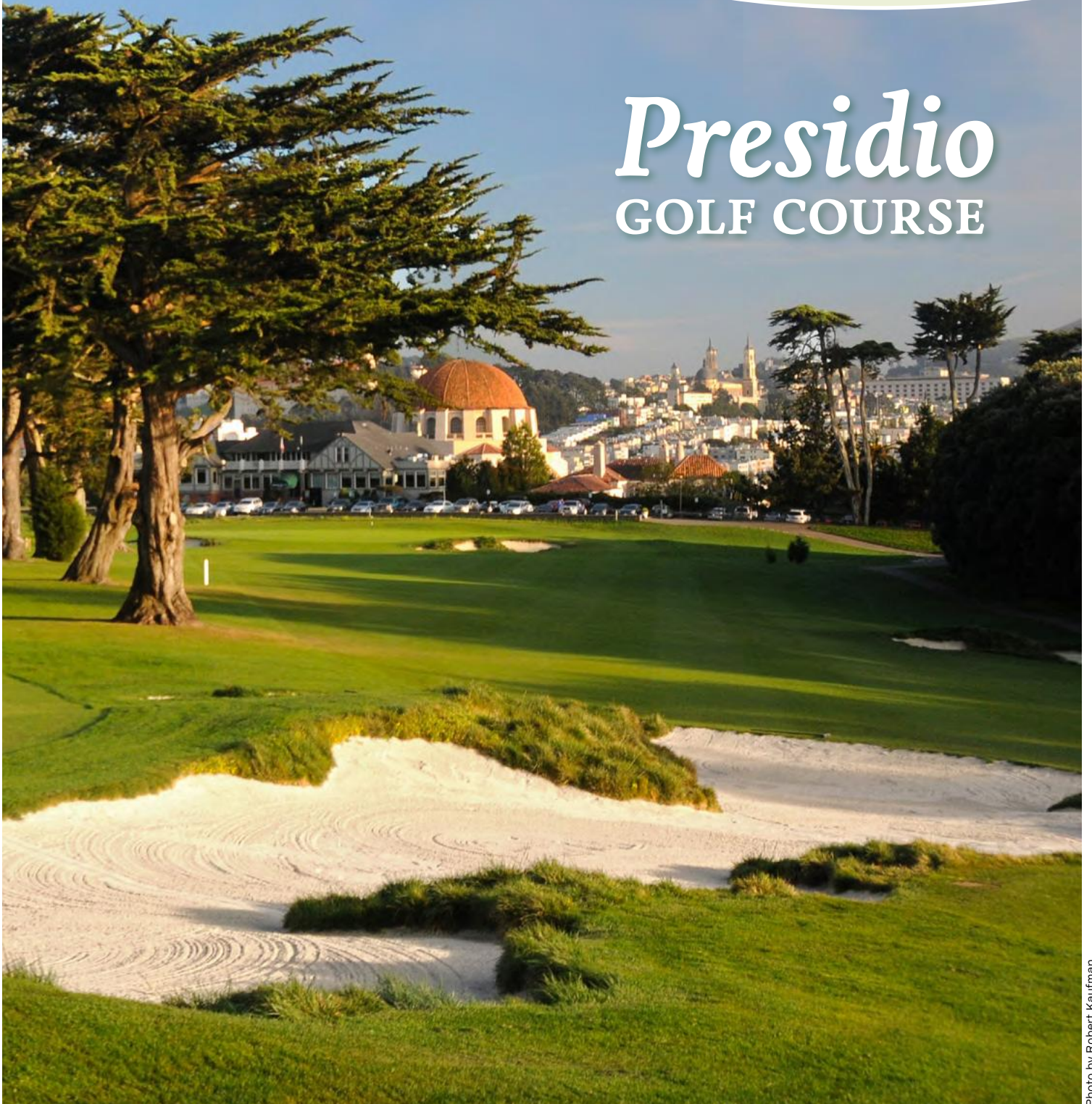
# THRU THE GREEN

The Golf Course Superintendents Association of Northern California

NOVEMBER / DECEMBER 2013

Northern California Chapter  
**GCSAA**

## *Presidio* GOLF COURSE



# Officers & Directors 2013

## OFFICERS



PRESIDENT  
**JON CHRISTENSON**  
Oakhurst Country Club  
christenson.j.m@gmail.com



SECRETARY TREASURER  
**BRIAN BOYER**  
Cinnabar Hills Golf Club  
bboyer@cinnabarhills.com



VICE PRESIDENT  
**GARY INGRAM, CGCS**  
Metropolitan Golf Links  
gingram@playmetro.com



PAST PRESIDENT  
**RODNEY MULLER**  
Empire Ranch Golf Club  
muller\_rodney@yahoo.com

## BOARD OF DIRECTORS



DIRECTOR  
**KYLE MARSHALL**  
Summitpointe Country Club  
Kyle\_m1@hotmail.com



DIRECTOR  
**JAY NEUNSINGER**  
Tilden Park Golf Course  
jay9singer@gmail.com



DIRECTOR  
**JAMES ABATE**  
TPC Harding Park Golf Course  
jimabate@pgatourtpc.com



DIRECTOR  
**STACY WALLACE**  
Stonetree Golf Club  
wallacestac@yahoo.com



AFFILIATE DIRECTOR  
**JAMES SHERMAN**  
Turf and Industrial Equipment  
jrs@turfandindustrial.com



AFFILIATE DIRECTOR  
**RYAN SMITH**  
Belkorp Golf & Turf  
ryan.smith@belkorp.org



ASSISTANT SUPERINTENDENT DIRECTOR  
**MATTHEW KUCHIN**  
San Jose Country Club  
mkuchin@sanjosecountryclub.org



## ON THE COVER:

The 9th hole at the Presidio. Photo by Robert Kaufman.

## Inside

<i>Office Notes</i> By <b>BARBARA MIKEL</b> . . . . .	<b>3</b>
<i>Naumann's NorCal News</i> By <b>DON NAUMANN</b> . . . . .	<b>3</b>
<i>NorCalendar</i> . . . . .	<b>3</b>
<i>New Members</i> . . . . .	<b>3</b>
<i>President's Message</i> By <b>JON CHRISTENSEN</b> . . . . .	<b>4</b>
<i>Sand</i> By <b>SEAN TULLY</b> . . . . .	<b>6</b>
<i>From the Field</i> By <b>JEFF JENSON, GCSAA</b> . . . . .	<b>8</b>
<i>Editor's Ramblings</i> By <b>BRIAN NETTZ, CGCS</b> . . . . .	<b>9</b>
<i>Evaluation of Products for Turfgrass</i> <i>Water Conservation Using an LGIS</i> . . . . .	<b>12</b>
<i>First Tee Committee</i> By <b>GARY INGRAM, CGCS</b> . . . . .	<b>15</b>
<i>Chapter Delegate Meeting</i> . . . . .	<b>16</b>
<i>California Turfgrass &amp; Landscape Foundation</i> <i>2013 Report &amp; Update</i> . . . . .	<b>19</b>

**Thru The Green** published bimonthly by the Golf Course Superintendents Association of Northern California.

EDITOR	PUBLISHER	ASSOCIATION MANAGER
<b>Brian Nettz, CGCS</b> (415) 561-4615 bnettz@palmergolf.com	<b>Shaw Kobre</b> (707) 569-8481 shaw@intheloopgolf.com	<b>Barbara Mikel</b> (530) 626-0931 bmikel@gcsanc.com





## Office Notes

By **BARBARA MIKEL**

It's that time of year again. Membership renewal began November 1 and will close December 31, 2013 for the 2014 year. The renewal process has been automated since 2009. Each year the software changes with demands of keeping it up-to-date with features and security. Directions for online membership updates and renewal were included with your invoice.

A renewal invoice was emailed to you in November using your association email. Please check your membership profile to make sure we have current information. <http://www.gcsanc.com/membership/member-profile/>. You may renew online and pay by credit card at any time.

If you have multiple emails and didn't receive your invoice, drop a note to the office email [gcsanc@att.net](mailto:gcsanc@att.net) using your correct email so we can update and resend your renewal information.

Reminder emails will be sent approximately every two weeks until December 31, 2013. You need to make your payment by December 31 to avoid a late fee assessment. If you joined the association after September 2013, your renewal will be prorated for the 2014 year.

While you are on the website take the time to plan your association calendar for the upcoming meetings. The Calendar has information up to June 2014.

The upcoming Holiday Meeting promises to be another exciting networking event. Friday golf at Del Monte Golf Course, Monterey and night meeting with dinner at the Hyatt Monterey Regency Hotel & Spa. Great golf and dinner raffle prizes.



## Naumann's NorCal News

By **DON NAUMANN**

**John Jorgensen** has left Lone Tree Golf Course in Antioch and is now the new Superintendent at Spanos Park GC in Stockton.....**Kyle Marshall** has left SummitPointe Golf Course in Milpitas as is the new Super at San Joaquin Golf Course in Irvine. Replacing him is **Matt Shaeffer** who is coming to northern California from the Pacific Northwest....The new Superintendent at Santa Clara Golf and Tennis Club is **Denis Smith**. Denis had been the Super at Mount Shasta Resort Golf Course, located in the beautiful Siskiyou County...



## NorCalendar

### NOVEMBER

#### Regional Meetings

Check the website for locations  
<http://www.gcsanc.com/events/>

### DECEMBER 6

#### Holiday Party

Del Monte Golf Course & Monterey Hyatt Regency Hotel  
<http://www.gcsanc.com/events/>

### JANUARY 13, 2014

#### Annual Meeting and Elections

Oakhurst Country Club

### FEB 1-6

#### GCSAA Golf Industry Show

<http://www.golfindustryshow.com/>

### MARCH 17

#### USGA, GCSANC Green Section Conference

### APRIL 14

#### NCPGA, CMAA, GCSANC Invitational

Blackhawk Country Club

### JUNE 23

#### Seventh Annual Clifford and Myrtle Wagoner Scholarship Research Tournament

## More Details?

Visit [www.gcsanc.com/events/](http://www.gcsanc.com/events/)

## New Members

### Charles Almony

Nicklaus Club Monterey  
Assistant Superintendent

### Steven Hoying

Nicklaus Club Monterey  
Assistant Superintendent



## President's Message By JON CHRISTENSEN



# WE WANT YOU!

Here we are again, the time of year where we start asking for volunteers to serve on the GCSANC Board of Directors. I am sure you are thinking the same as I am right now, where did the summer go and is it really almost the end of the year? I cannot believe this season has gone by so fast, but at the same time, I cannot wait for the rains to come. It has been a LONG season.

When it comes to Board service or volunteering for a GCSANC Committee, I imagine the biggest question anyone will ask themselves is, "do I really have time for it"? Here are a few things to consider:

### Time commitment

Because of this, chances are you'll be asked to make a commitment to your role as a board member for at least a year, possibly two or three should you have aspirations to serve as President.

However, the amount of time you actually contribute can vary from just a few hours per month participating in board meetings, to a few more hours depending on what special projects there may be going on. In general, the board meets 8-10 times annually to conduct the business of the Association.

### Why serve on the board?

So why might you want to consider serving? First and foremost, board service is an excellent way to give back to your peers and profession that has given to you. It enables you to have a possible lasting impact as you aid in identifying long-term goals, seek out diverse opportunities for collaboration, and brainstorm—as well as potentially implement—innovative strategies for lasting change. At the same time, serving on a board can be an invaluable way to meet others in your profession. Not only can these connections help you build new social ties but those you serve with will almost certainly share your passion for the Association and profession.



## J. Arnaz Tree Movers

# Protecting the integrity of California's golf courses.

**J. Arnaz Tree Movers**  
Email John: [treemover@comcast.net](mailto:treemover@comcast.net)  
**408-266-1717**

Our experts can transplant or relocate mature trees quickly and efficiently using the latest state-of-the-art equipment including:

- 48", 65", 90" and 100" Hydraulic Tree Spades  
Allowing for the transplanting of any tree without damaging the fragile root system
- Serving over 60 courses since 1972 • Tree Boxing and Planting

1593 Koch Lane • San Jose • California • Visit us on the web: [www.treemovingexperts.com](http://www.treemovingexperts.com) • State Contractor Lic. # 472305

Los Altos C.C.      100" SPADE      TREE BOXING



### Other great reasons to serve?

Here are just a few:

- Honing and actively demonstrating your leadership skills (board service looks great on a resume)
- Getting a behind-the-scenes look at the “business” side of our profession
- Gain Valuable Life Experiences and Skills
- Meet Interesting People. The people you are serving with can give you new insights. You’ll find that they have information and ways of looking at the world differently that can broaden your horizons
- Get GCSAA Credits for board service
- Make a Difference

As I look back on my 7 years of Board service, I can honestly say it has been one of the most rewarding experiences of my professional career. I would do it all over again when the time is right. I challenge you, is this your time? If this is your time, contact Barbara or any board member regarding your desire to serve. You won’t regret it!

**Does your discount fertilizer run out of gas before it should?**



**For long lasting performance use  
Turf Gold or Super Turf from...**



by Simplot

**...the One that works!**

**Professional Grade Fertilizer**

For more information about BEST® turf nutrition solutions visit us at  
[www.bestfertilizer.com](http://www.bestfertilizer.com) • 800.832.8891 • Or contact your BEST Distributor  
©2013 J. R. Simplot Company. All rights reserved.

## COUNT ON US

**Proudly Representing:** • **TORO** Equipment and Irrigation Systems • Pre-Owned Equipment  
• Club Car • Harper • Express Dual • Turflite • Otterbine



**800.585.8001**  
**[www.turfstar.com](http://www.turfstar.com)**

Bermuda Dunes | Brea | Fresno  
Hayward | Rancho Cordova | Vista



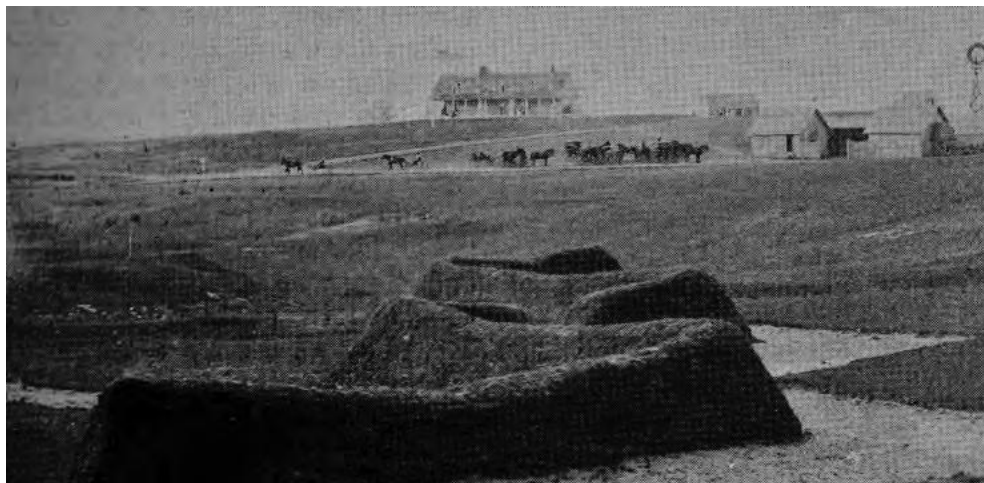
## Sand By SEAN TULLY

Sand plays an integral part in the game of golf; from forming hazards to helping provide quality putting surfaces, it can hinder as much as it can improve the conditions that we play the game over. From golf's earliest days on the links, sand played an important part in how the game was played and shaped. It has often been said that the original bunkers were formed from animal scratches or areas where animals found shelter from the wind and rain. When golf moved inland sand came with it, but it was forced on the land as golfers tried to recreate golf as best they could, using a bunkering style that more closely resembled military entrenchments than a natural looking wind blown bunker.

A very early bunker that is highly engineered and takes on an almost rhythmic nature was found on the original course at Shinnecock Hills Golf Club in 1894.

But we need to go back to England and look at the evolution of the course at Royal Mid-Surrey from around 1900 with this highly engineered bunker that guarded the 18th green just behind it. It would be another 10+ years before some of the earliest attempts of “naturalizing” work was done by J.H. Taylor, a five-time winner of The Open and Peter Lees who was the club's Greenkeeper. A mention of the work at Royal Mid-Surrey in *Golf Illustrated* in March of 1911 states, “the older methods are being discarded in favour of something more pleasing to the eye, but still sufficiently effective in punishing wrong doers in the golfing sense.” If you go onto Google maps you can still see some of the old mounds around the Mid Surrey Golf Club today!

In the two photos from around 1910, one can see in the background how flat the property was before they worked on adding more natural looking features. Their work would take on the



name of “alpinization” and would be implemented by many other golf architects that followed. The last photo is of A.W. Tillinghast's Somerset Hills Golf Club circa 1919 and it shows some of the same early attempts at trying to recreate natural features on a flat property.

Today we are reminded of these earlier attempts at taking a flat, featureless property and making a golf course that tries to recapture the appeal of a links course. Whistling Straits comes to mind!







A FINE EXAMPLE OF MOUND BUILDING. THE 6<sup>TH</sup> GREEN AT SOMERSET HILLS

## A smooth transition.



### Transition™ HC

High Concentrate Dark Turf Colorant

**Transition™ HC** turf colorant helps manage turf color throughout fall and spring transitions of overseeding programs. The high concentrate formulation allows for flexibility in application rates, with color lasting up to 30 days.

Find out more by contacting Greg Wahl at [greg.wahl@basf.com](mailto:greg.wahl@basf.com), 925-519-2193.

 **BASF**  
The Chemical Company

Always read and follow label directions. Transition is a trademark of BASF. © 2013 BASF Corporation. All rights reserved. APN 13-BU-TO-006



## From the Field

By **JEFF JENSEN**, GCSAA Field Staff, Southwest Region

By the time you are reading this column, early registration for the 2014 Golf Industry Show, Education Conference and GCSAA Golf Championships will be moving full speed ahead. The events are scheduled for February 1-6 in Orlando, FL. While the event is being held across the country, GCSAA is expecting a great turnout from all of our northern California members.

The Education Conference, with a new Monday-Thursday format, will feature over 75 seminars (including 16 new seminars), 40 sessions and over 450 hours of education. Two new networking events have been added to the mix, including an Opening Night Celebration that will be held on Feb. 4 and a Closing Ceremony that will be held on the evening of Feb. 6.

The Golf Industry Show will feature over 175,000 square feet of exhibit space and 500 exhibitors highlighting the most innovative products and services in the golf maintenance industry. Numerous exhibitors will be offering show discounts and the floor is a great place to network with fellow superintendents and other GCSAA members.

Conference and show registration for GCSAA members begins Nov. 5 and can be completed online at [www2.gcsaa.org/conference/registration](http://www2.gcsaa.org/conference/registration). Both events will be held at the Orange County Convention Center.

The GCSAA Golf Championships, presented in partnership with

Toro, will take place Feb. 1-3 at six Orlando area courses. The Grand Floridian Hotel, on the grounds of the Walt Disney World Resort, will serve as the host hotel. The featured courses include Disney's Lake, Palm and Magnolia layouts, Hawk's Landing Golf Club, Marriott's Grande Pines Golf Club and Celebration Golf Club.

The four ball event will be contested on Feb. 1 with the National Championship and Golf Classic taking place Feb. 2-3 and a fun-filled shamble for non-tournament participants on Feb. 2.

The National Championship is a 36-hole stroke-play event open to qualifying members (Class A, Superintendent Member, Class C, A-Ret., Superintendent-Ret., Class C-Ret., and AA-Life) within a handicap index range not exceeding 5.0.

The Golf Classic offers a more relaxed competition and is open to all GCSAA members with a verifiable handicap. The 36-hole event uses a point quota scoring system and is flighted by handicap with both a gross and a net competition available in each flight.

Registration for all the golf events is currently open on a first come, first serve basis. Register at <http://www2.gcsaa.org/conference/tournament/>.

This marks the final newsletter of the year for GCSANC and I want to thank you for your support in 2013. I hope that you all have a safe and happy holiday season and I look forward to seeing you at the GCSANC Annual Meeting in Jan. or in Orlando at GIS.

# TMT ENTERPRISES, INC.

GCSANC Members Since 1976

Phone: 408-432-9040

IN BUSINESS SINCE 1961



**Fall aerification is here! Order your dry sand early for best availability.**

We have colored sand or divot mix, available in bulk or bulk totes! Colored sand or divot mix not only looks better, but will hold more heat than ordinary sand, helping to increase germination rates. Call today for more info!

TMT Enterprises is now your exclusive supplier of TD-320 top dressing sand & BB-205 Bunker Sand. Quality & availability are better than ever!



Stock up on your favorite top dressing sand ahead of time. Whether you use washed sand or one of the many dry sand options we offer, the typically great weather this time of year means there is little concern of rain & weather related contamination.

Bunkers are the most frequent source of complaints on any golf course. With the widest selection of bunker sand of any supplier in California, we have materials that will meet your member's needs for play & aesthetics. From Idaho BB bunker sand to Monterey's PB bunker sand, our own TMT White Bunker Sand, G8, #3, or even a custom blend, you name it!

Web: [www.tmtenterprises.net](http://www.tmtenterprises.net)

Email: [info@tmtenterprises.net](mailto:info@tmtenterprises.net)





## Editor's Ramblings

By **BRIAN NETTZ, CGCS**

### *The Antisocial Network and the Wussification of America*

I'm tired of hash tag this and hash tag that. I'd rather have hash browns, and not the overly buttered soggy ones. Maybe I'm getting even more cantankerous and crabby in my years, but I personally don't care to tell the entire free world where I am, what I think of the dinner I just had, or how that third margarita last night is affecting my job performance. Enough already! There is just way too much mindless chit chat BS out there to take up everyone's time. I don't want to accept that much social media. There is just way too much mindless banter out there that everyone is way too interested in reading. I don't care what Kim Kardashian thinks about the Syrian rebels and what Madonna thinks of Miley Cyrus and what Miley Cyrus thinks about anything. If I want to tell you something, I'll tell you if I feel it's relevant. You don't care about the sandwich I bought which has a mold spot on it. I can appreciate that. Also, I understand that I'm about as subtle as the guy swinging the 18 ounce hammer on the stun line at the slaughterhouse so I prefer to keep my thoughts to myself as opposed to dealing with both the shock and awe of my communication. Call me Phil Rob-

ertson. I don't care. I consider myself more like Si.

While on the subject of shock and awe, I saw where a school in New England banned tag from school recess. Whaaatt??? They say it's too dangerous with all the varying amounts of tagging force, which can lead to injury. So let me get this straight, tag is now too dangerous? It's no wonder the younger work force is so clueless and entitled. They never skinned a knee and had to get over it and get back to class.

Speaking of getting over things, can't these congressional buffoons get over themselves and get back to the jobs they were elected to carry out? If we are going to have a wee wee match over the debt, then ALL of you idiots can forgo your pay while I continue to pay taxes without the services my taxes pay for. Can't that money be put to reducing debt? I mean, really, if these people are going to make the entire country and everyone in it look like the stereotypical "dumb Americans" then at least they shouldn't get paid.

Have a nice day.

# SAND-BASED

# SOD

**Bentgrass**  
**Ryegrass**  
**Bluegrass**  
**Bandera Bermuda**  
**Rye-Blue**  
**Fine Fescue**  
**Tall Fescue**  
**Tifway II**

**Seashore Paspalum**

or your custom grown variety!

GREG DUNN  
 209/993-3329  
[www.westcoastturf.com](http://www.westcoastturf.com)

Installation available

Find us on Facebook

**LOCALLY GROWN**

**WEST COAST TURF**

*Life is short. Sod it!*



# golf industry show

GCSAA Education Conference | Trade Show | GCSAA Golf Championships

*Leading the industry in quality education, product innovations and networking opportunities, the 2014 Golf Industry Show provides you with everything necessary to keep your career and your facility a step ahead and ready to face any challenge:*

**CONNECT** with thousands of your peers, building relationships and picking up tips  
**LEARN** from the most prominent names in the industry who will answer your tough industry questions  
**GROW** your knowledge of golf course management and your network of contacts



## EDUCATION CONFERENCE HIGHLIGHTS

- **NEW** Monday-Thursday format
- 450+ hours of innovative education
- 75+ seminars to choose from
- 16 **NEW** seminars available
- 40+ sessions throughout the week
- Two **NEW** networking events
- Opening Night Celebration – Tuesday, Feb. 4
- Closing Celebration – Thursday, Feb. 6
- General Session featuring the USGA on Thursday morning
- Tips and techniques for managing your facility on a tight budget

## A WORTHWHILE INVESTMENT

**84%** of attendees are confident that the event makes them more valuable to their employer

**82%** of attendees feel that the event delivers real value to their golf facility

**76%** of attendees say that the event is an indispensable component of their professional development



## TRADE SHOW HIGHLIGHTS

- **500+ exhibitors**
- 175,000 net square feet of exhibit space
- **New Product Showcase** highlighting the most innovative products and services
- **20+ hours of education** on the trade show floor
- Hands-on preview of the most **innovative products and services** on the market
- Countless **networking opportunities** that spark new ideas
- **Show floor discounts** on products and services that benefit your facility

Orange County Convention Center • Orlando • February 1-6, 2014

For more information visit  
[www.golfindustryshow.com](http://www.golfindustryshow.com)





# golf industry show

GCSAA Education Conference | Trade Show | GCSAA Golf Championships

Orlando  
**GCSAA**  
Golf Championships  
Presented in Partnership with **TORO**

*The 2014 GCSAA Golf Championships, presented in partnership with The Toro Company, is teaming up with Disney for a weekend of championship golf, valuable networking, luxury accommodations and an attendee experience that is bound to be magical.*

*To alleviate the amount of overlap between the GCSAA Golf Championships and the education conference, the tournament schedule has been shifted back one day. The new schedule will run as follows:*

Four Ball  
Welcoming Reception  
Shamble  
Golf Classic  
National Championship  
19th Hole Reception

Saturday, Feb. 1  
Saturday, Feb. 1  
Sunday, Feb. 2  
Sunday and Monday, Feb. 2-3  
Sunday and Monday, Feb. 2-3  
Sunday and Monday, Feb. 2-3



## JOIN US IN ORLANDO TO:

- **DISCOVER** solutions to your biggest challenges while networking on and off the course
- **FIND** out first-hand how the game of golf impacts what you do every day
- **DEVELOP** long-term, valuable relationships with other industry professionals
- **VIEW** maintenance practices while playing several top-notch golf courses
- **PLAY** against your peers in a friendly competition
- **WIN** money for your chapter



## SIX PROMINENT GOLF COURSES

**Disney's Grand Floridian Resort & Spa**

*Palm*

*Magnolia*

*Lake Buena Vista*

**Hawk's Landing Golf Club**

**Marriott's Grande Pines Golf Club**

**Celebration Golf Club**

*400+ of your peers in a casual setting*

*25+ hours of networking on and off the course*

## BACK BY POPULAR DEMAND!

*Prize money* awarded to the chapter team competition winners in net and gross division **AND** *an onsite mobile pro shop!*

Orange County Convention Center • Orlando • February 1-6, 2014

For more information visit  
[www.golfindustryshow.com](http://www.golfindustryshow.com)

# Evaluation of Products for Turfgrass Water Conservation Using a Linear Gradient Irrigation System (LGIS)

**MARCO SCHIAVON, JIM BAIRD, TOAN KHUONG, JACOB GRAY, and KATARZYNA ZAK**

Department of Botany & Plant Sciences • University of California, Riverside

## Objectives:

1. Determine effective irrigation and chemical management practices to reduce turfgrass water use.
2. Evaluate the ability of products to maintain acceptable turf quality under reduced water use.

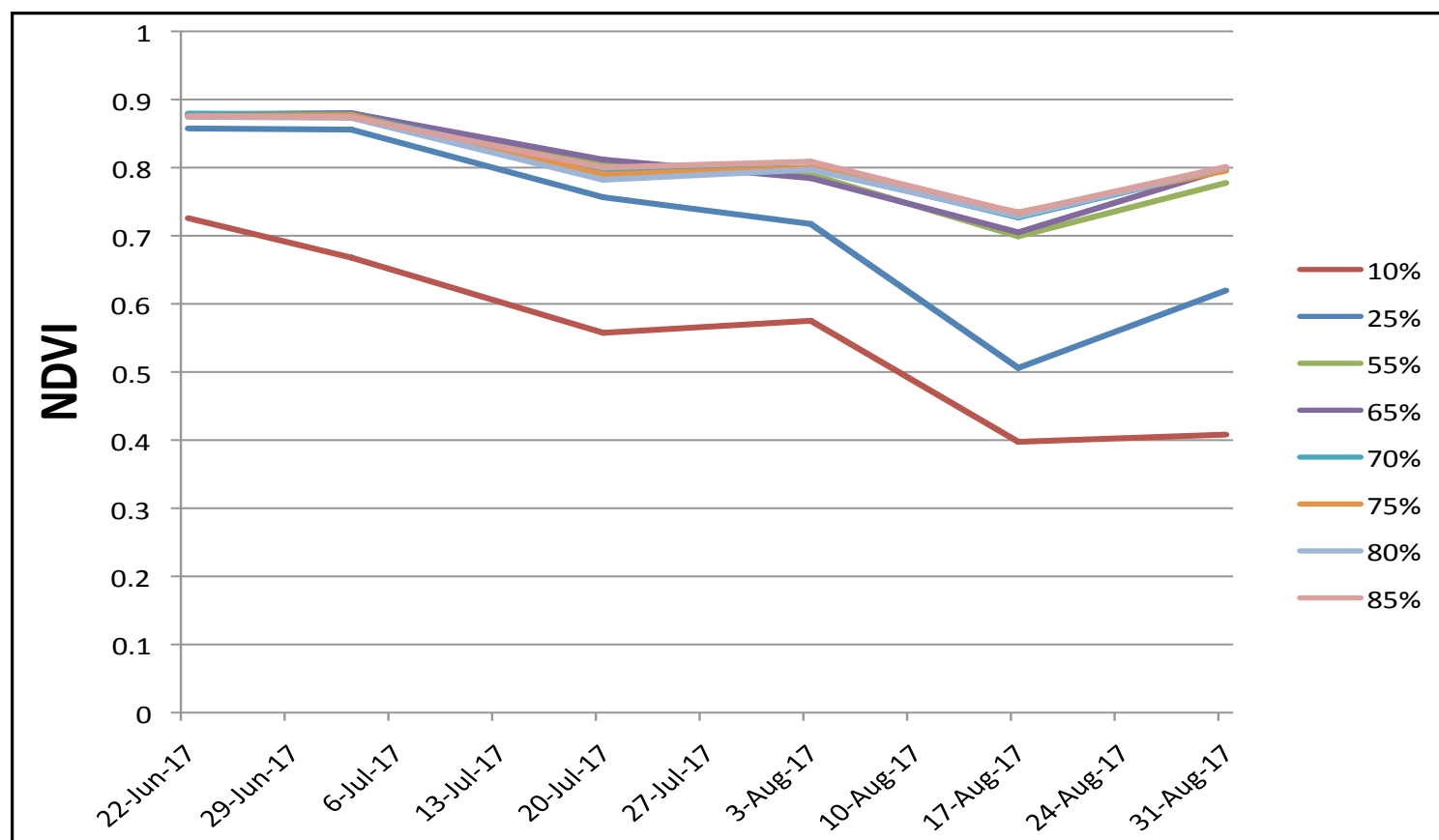
## Methods:

The LGIS area was sodded with ‘Tifway II’ bermudagrass on 7 August 2012 and is mowed three times weekly at 5/8 inches. The area receives ½ lb N/M/month during the growing season. Areas of each plot that receive 10, 25, 55, 60, 65, 70, 75, 80, and 85% reference evapotranspiration (ET<sub>o</sub>) were determined using catch cans to capture irrigation water. This procedure was repeated and validated every two weeks during the experiment. Both irrigation and chemical treatments were applied from September to December 2012 and resumed again on 5 April 2013. Every two weeks, plots were evaluated for turf quality, NDVI (measure of greenness), volumetric soil water content, and surface temperature in the irrigation zones representing 10 to 85% ET<sub>o</sub>.

**Table 1. List of chemicals used in the LGIS study. Riverside, CA.**

Number	Treatment	Type	Rate (oz/M)	Interval (d)
1	UCR006P		5.88	14
2	UCR006P		7.35	14
3	UCR006P		8.82	14
4	UCR006P		11.75	14
5	Recovery Rx	Phosphite + Nutrients	5.00	14
6	PK Plus	Phosphite + Nutrients	6.00	14
7	Kelplex	Nutrients +	2.00	7
7	Ultrplex	Surfactant	4.00	7
8	Revolution	Surfactant	6.00	28
9	Neptune	Surfactant	6.00	28
10	Aquaplus	Polyacrylamide	3.00	28
11	Primo Maxx	Plant Growth Regulator	0.30	14
12	Control	—	—	—

\*All treatments applied in a carrier volume of 2 gal/M.



**Figure 1. NDVI collected on bermudagrass plots irrigated at 10%, 25%, 55%, 65%, 70%, 75%, 80% and 85% reference evapotranspiration (ET<sub>o</sub>). Riverside, CA.**



## Results:

No treatment differences have been found with respect to drought response in 2012 or to date in 2013. Although chemical treatment differences are not yet detected in any of the ratings collected, ETo has a significant effect on turf quality and NDVI or “greenness.” Ratings differ when ETo drops below 55%, with the 25% and 10% ETo treatment showing the lowest NDVI and turf quality. Both NDVI and turf quality decreased until 16 August. However, after a rainfall event that amounted for 1.5 inches of rain on 29 August, higher NDVI and quality were collected on the plots on 30 August (Figures 1 and 2). Overall these data support the use of warm-

season (C4) turfgrass species for water conservation in southern California such as bermudagrass, which requires significantly less water (55% ETo) to maintain color and quality compared to cool-season turfgrass species. This study will continue through 2014.

## Acknowledgments:

We thank the Metropolitan Water District of Southern California, California Turfgrass & Landscape Foundation (CTLF), Toro, and participating chemical companies for their continued support of this research.

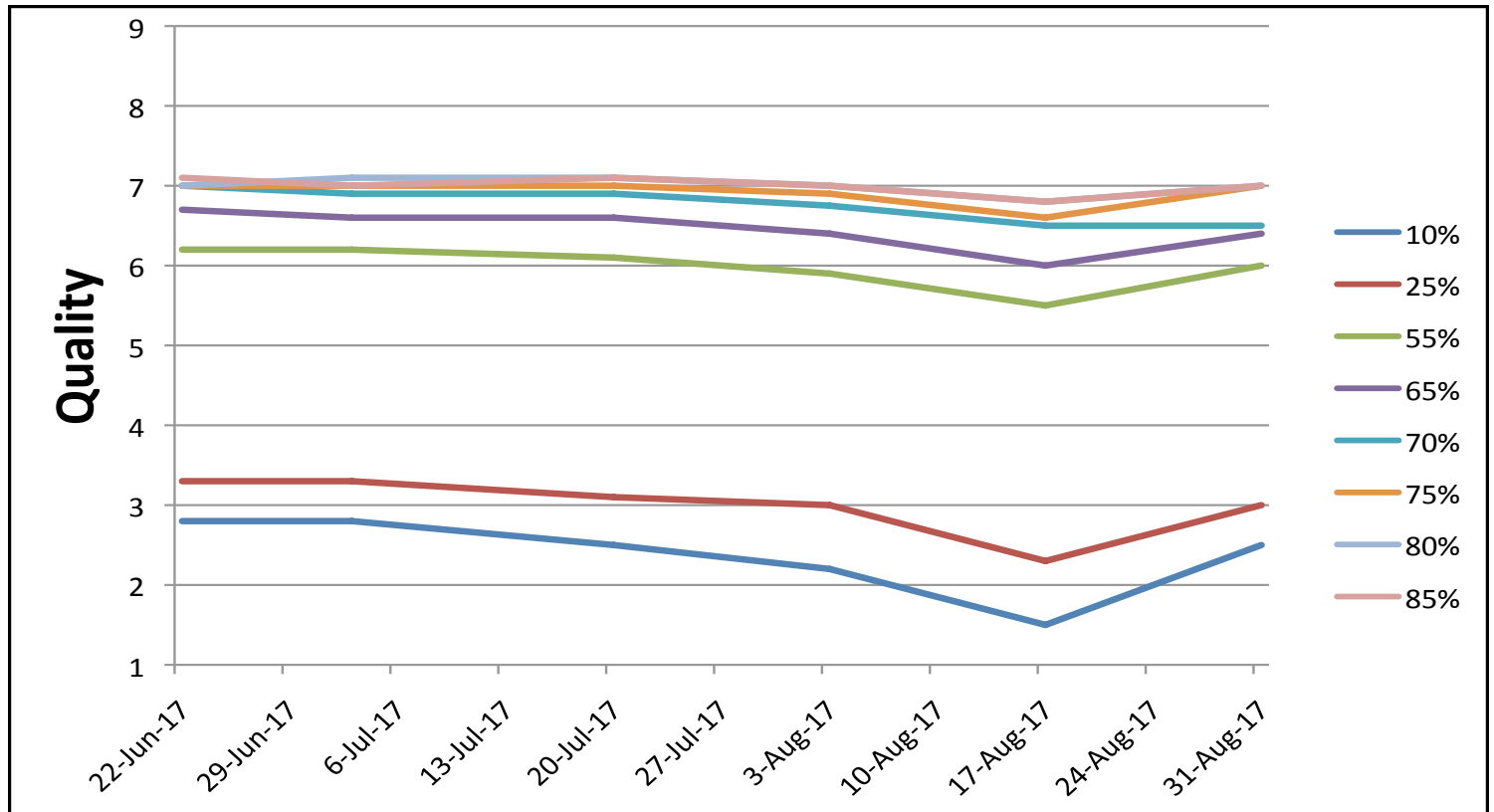


Figure 2. Turf quality (1 to 9 scale, 9 = best) of bermudagrass plots irrigated at 10%, 25%, 55%, 65%, 70%, 75%, 80% and 85% reference evapotranspiration (ETo). Riverside, CA.



**RON HARVEY**  
PUMP SERVICES MANAGER

125 MASON CIRCLE  
SUITE G  
CONCORD, CA 94520  
rharvey@cornerstoneenv.com

DIRECT: 209.345.8359  
FAX: 925.755.8099  
MAIN OFFICE: 925.299.9225

**Floratine**  
**Phoenix**  
**Kisco**  
**JRM**



**AnaLync**  
**AquaVive**  
**Gro-Power**  
**Aqua-Pucks**

Farmload Distributors (800) 322-8417

**Your Exclusive Northern California Dealers**

**Mike Farmen**  
559-709-6295

**Thor Larson**  
831-277-4356

**Peter Galea**  
831-234-3218

**Frank Putnam**  
209-419-1005

n a t u r a l   &   o r g a n i c

# NatureTech™

A Product of ORGANIC FARMS®

## Quality & Economy

- Slow Release Nitrogen and Variably Releasing Nitrogen Blends.
- Promotes Turf Density and Speeds Aeration Recovery.
- Enhances Soil Structure for Improved Disease Resistance.



For more information visit our web site: [www.NatureTechFertilizers.com](http://www.NatureTechFertilizers.com)  
or call 209-394-1171

## Every superintendent needs a good caddie.

Let us try out for the part. We can provide all the supplies you need to keep your course looking its best. And with our knowledgeable staff, we can help you make an ace.



## JOHN DEERE LANDSCAPES



800-347-4272  
[www.JohnDeereLandscapes.com](http://www.JohnDeereLandscapes.com)



## *The First Tee Committee* By **GARY INGRAM**, CGCS

Many do not know that one of GCSANC's standing committees is the the First Tee Committee. Our primary focus is to help superintendents set up relationships with local golf programs and schools and to spread the word that golf courses are good for the community and the environment. We are also trying to develop a database of other outreach organizations within the GCSANC membership to create a collaborative effort.

Metropolitan Golf Links has developed an outreach program called Oakland Turfgrass Educational Initiative (OTEI) for which GCSANC has donated funding. Their current programs are study tours to golf courses and other agronomic venues, internships, and career days. In the last couple years they have created a relationship with the local First Tee program that uses their facility as a learning center. Short 10-20 minute discussions can be as simple as ball mark repair, divot repair or cup changing. It is very important, fun, and rewarding to discuss golf course maintenance principles and the need for golfers to respect the venue for which play golf. If you are interested in getting more involved or if you already have an outreach program for which you facilitate please contact committee members Gary Ingram CGCS or Jay Neunsinger.



**1) Ball mark repair. 2 & 3) Divot Repair.  
4) Soil percolation. 5) Soil pH/salt testing  
and irrigation discussion.**



## Chapter Delegate Meeting By GARY INGRAM, CGCS Voting Delegate

This year the Chapter Delegate Meeting was held GCSAA Headquarters in Lawrence, Kansas on October 3 and 4. It was a very informative and interesting two days. Even though the primary goal was to meet and learn about the candidates for the upcoming GCSAA Board and provide unique networking opportunity, we were given the opportunity to learn more current state of affairs of our organization, tour our newly renovated headquarters, and to participate in a roundtable discussion.

What we learned and observed was that our current board, with the leadership of CEO Rhett Evans, not only evaded the economic storm, but were able to make some major improvements to our organization. Through investments, and modifying our GCSAA team, we have become a stronger and more effective organization. Even though we needed to reduce our overall staffing they have been able to add regional field staffing that can visit golf courses and provide additional support to the local organizations. Jeff Jensen is our field representative and many of you have met at our events and have read articles he has written our newsletter. We also visited the beautiful and highly efficient, newly renovated headquarters. These needed improvements were accomplished by obtaining low-interest loans that were just recently available. These improvements have become a definite win-win situation. With the major reduction in staffing they needed to provide an efficient and enjoyable working environment to keep our member services intact. Some of the offices are even rented out to private businesses to help defer costs. One of the improvements we visited was library which all of us may enjoy. You can also now even get onto The Michigan Turfgrass Foundation through the GCSAA website as a golf course superintendent member.

The roundtable discussions primarily focused on our current classifications. The questions that were asked were:

1. Do you feel it would help GCSAA's marketing efforts to employers to simplify membership classifications?
2. As you think about your chapter members who are not Class A, what needs to happen to make him/her want to achieve Class A?
3. What is a realistic timeframe for having any changes in place?

The overall consensus was that something needs to be done to clarify our classifications for our membership, employers, and the general public.

If you have any opinions, concerns, or ideas please do not hesitate to email us at [gcsanc@att.net](mailto:gcsanc@att.net).

As first indicated, the primary goal of this trip was to obtain information about the upcoming election for the GCSAA board.



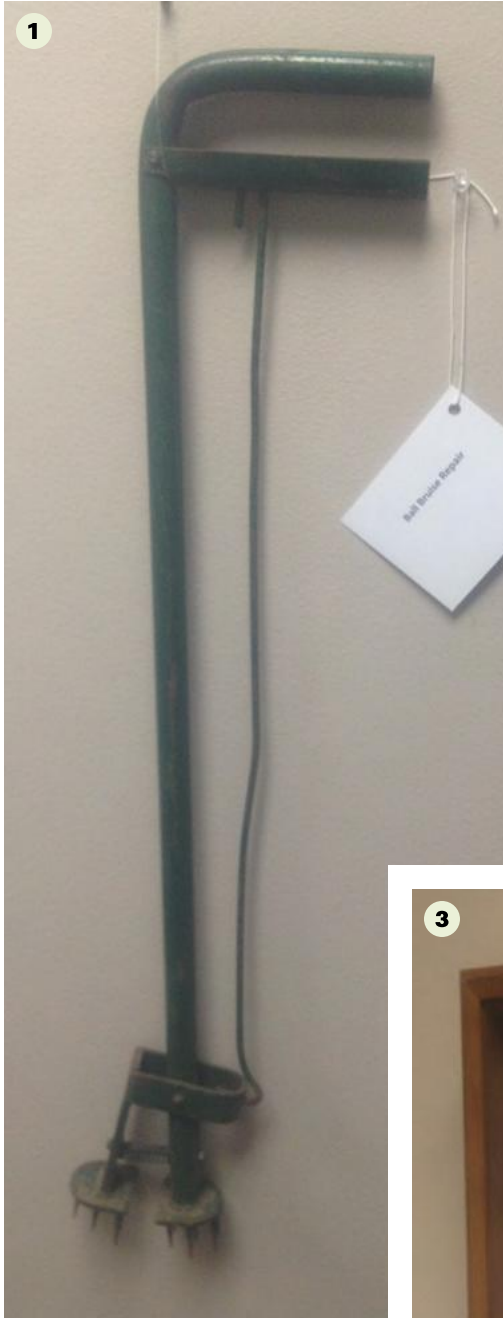
**Old Tom Morris at GCSAA entrance**

Following is a list of this year's candidates:

For President:	Keith Ihms, CGCS
For Vice President:	John O' Keefe, CGCS
For Secretary/Treasurer:	Pete Grass, CGCS
	Bill Maynard, CGCS
Director Positions:	Rafael Barajas, CGCS
	Mark Jordan, CGCS
	John Walker

There are two open positions for director. The two director candidates receiving the most votes will be elected to two-year terms. If Peter Grass, CGCS is successful in his bid for secretary/treasurer, Bill Maynard, CGCS will need to accept a nomination from the floor at the annual meeting to continue as a director of GCSAA in 2014. Mr. Grass's remaining year as director will be filled by an appointment by the president with approval by the board of directors. If Mr. Maynard is successful in his bid for secretary/treasurer, Grass will automatically remain on the board for another year as director. Darren Davis and John R. Fulling Jr., CGCS, remain on the board with one year remaining in their two-year director terms. Patrick R. Finlen, CGCS, will serve on the board for one year as immediate past president. Sandy G. Queen, CGCS, retires from the board after serving the last year as immediate past president. If we you would like more information concerning elections they can be found on the GCSAA web at: <http://www.gcsaa.org/Community/Annual-Meeting/2014/2014-Annual-Meeting-Preview.aspx>.





From the GCSAA Headquarters museum:

- 1) Ball bruise repair tool.
- 2) Portable sprinkler.
- 3) Myrtle Wagoner collected a "charm" for each year attending the GCSAA Conference and Show since 1974. All the charms distribution series is part of the GCSAA Museum collection. Special congratulations to Myrtle and Clifford Wagoner on their 72nd wedding anniversary.

**ren•o•vate** *vb.*  
**1: to make like new again**  
**2: put in good condition**  
**3: to restore**



*Rely on The Leader in  
 "Cutting Edge" Renovation  
 Technology Services*

FROM REDDING, CA TO BAKERSFIELD, CA

**TEE OFF** - The Koro Topmaker® is ideal for removing and leveling damaged or worn turf areas on your fairways, verticutting and dethatching your tee-tops and greens.

**THE APPROACH** - Install our Tifway 419 Hybrid Bermuda, 50-50 Blue Rye Blend, Bentgrass or our *exclusive* bermuda turf blends; Baby Bermuda, Celebration, and Princess 77. All varieties are offered on peat soil or sand with or without netting, ideal for all your golf course needs.

**IN THE CUP** - Our Sports Turf and Golf Specialists also offer a wide range of other services: Complimentary Consulting, Custom Laser Grading, Big Roll Installation, Bermuda Sprig Planting, Soil Reliever Aeration, Slit Seeding and Field Top-dressing.



KORO  
TOPMAKER®

**Call Today  
 For the Tee-To-Green Success  
 Your Course Deserves!**  
**(800) 637-8873**

[www.deltabluegrass.com](http://www.deltabluegrass.com) • C-27 752734

## SIERRA PACIFIC TURF SUPPLY

INDEPENDENTLY OWNED & OPERATED  
 SINCE 1982



Sparks - (888) 460-8873

Rocklin - (800) 652-8721

Campbell - (800) 827-8873

**Sierra Pacific Turf Supply has  
 3 locations to serve you:**

Campbell: 510 Salmar Avenue • Campbell, CA 95008

Rocklin: 1175 Tara Court • Rocklin, CA 95765

Sparks: 535 Vista Blvd., Sparks, NV 89434

[dkinney@sierrapacificturf.com](mailto:dkinney@sierrapacificturf.com)



MITCHELL PRODUCTS



PRODUCT • PERFORMANCE • PROMISE

## "Tame Your Turf"



We at **Parris Turf Equipment** strive to Provide unmatched Service and **Support** for our customers **before, during and after** their purchases. We help customers to **maximize their investment** by minimizing the operating challenges of their equipment.

**Parris Turf Equipment • Sebastopol, CA**

**707.364.0213**

[www.parristurf.com](http://www.parristurf.com)





# California Turfgrass & Landscape Foundation

**2013 REPORT AND UPDATE** Through 9/30/2013 • **BRUCE R. WILLIAMS**, Executive Director

As the CTLF passes its second year, we are moving ahead at a rapid pace. We appreciate the great response to our challenges of supporting research throughout California on issues of turfgrass and landscape.

Highlights of the year were the establishment of membership classes and a dues structure. I would encourage anyone in the turf industry to join and have their businesses support CTLF. We are now offering an extended year for 2014 so if you register now you will get the rest of 2013 and all of 2014. Go to the foundation website at [www.CaTLF.com](http://www.CaTLF.com) to print out a membership form. They can also be obtained by sending an email to me at [Bruce@Williams-GolfConsulting.com](mailto:Bruce@Williams-GolfConsulting.com) Membership is for individuals, educators, students, golf facilities, commercial representatives, etc.

From a financial perspective we had our best year ever. So far this year we have brought in \$261,713.20 in revenues via contributions and grants. Much of this is due to our allied associations in CA and our many chapters of GCSA. A large thanks to Nor Cal for their continued support! We also raised \$2020 in dues and \$47.17 in dividend income. While raising over a quarter million dollars is impressive, much of the credit goes to Dr. Jim Baird who collaboratively works with us to present grants to companies and also The Metropolitan Water District. Roughly \$100,000 came in from MWD and \$50,000 from the manufacturer of Methiozolin. \$132,000 has been approved and sent to UCR for a variety of research projects. Another \$100,000 remains to be distributed to UCR for their MWD project. Expenses of the organization are minimal with approximately \$20,000 spent on administration in 2013 so less than 8% of our revenues.

UCR Fall Field Day was a huge success. It is estimated that we had 230 participants. Just a few years ago we were lucky to get 150 people. Great job by the UCR team. Thanks to all who participated and supported the event. Next year the date is Thursday, September 11, 2014 so put it on your calendar!

What kind of research takes place at UCR and other areas around the state? At the field day there were a number of areas that showed research results.

- Management of Anthracnose
- Evaluation of products for turf water conservation
- Establishment of turfgrass using subsurface drip vs. overhead sprinkler irrigation
- Evaluation of products to alleviate salinity stress
- Groundcovers and buffalograss for water conserving landscapes
- Postemergence control of crabgrass and broadleaf weeds
- Drought tolerant turfgrasses for southern California
- Once and for all, do fungicides really offer plant health benefits?
- Kikuyugrass management
- Biochar effects of turf management
- Root knot nematodes in turf

It should also be noted that Dr. Baird conducted field research throughout the state of CA. While UCR is in So Cal we realize that our support of turfgrass and also the research behind that is a statewide proposition.

Additional studies are underway that were not discussed at the field day including the use of methiozolin as a poa annua control. Dr. Baird has built a great research team that includes as many as 6 graduate students and even some post-doctoral people. Dr. Baird also works with other PhD's in the state and from other states to bring us the latest information to help us do our jobs.

So what can you do to get involved and support CTLF? Please consider the following:

- Go to our website
- Join CTLF
- Consider participating in Rounds for Research through the foundation or your local chapter
- Consider participating in GolfPreserves in which most golf courses can get carbon certificates that the CTLF will then market for a revenue source and also to support California Alliance for Golf legislative issues
- Try to attend the UCR Fall Field Day.

A big thanks to Barb Mikel for sharing our information with the NCGCSA and also Rodney Muller for championing our cause. While we do have representatives on our board from Nor Cal, and we surely thank Mike McCullough and Jim Abate, we are always open to having greater representation and involvement from that part of our great state.



Dedicated to fighting evils,  
**StressGard™** Formulation Technology  
never rests.

**Protect your course with the most powerful technology out there.** When it comes to overall plant health, Bayer fungicides with StressGard™ Formulation Technology give you control when it matters most. We've developed these products to work at a cellular level, strengthening turf and fighting against evil stressors like heat, drought and traffic so you'll have the strongest, healthiest turf and happy golfers. **To learn more visit [BackedByBayer.com/StressGard](http://BackedByBayer.com/StressGard).**

**Tartan® | Chipco Triton® Flo | Interface® | Chipco® Signature™ | Reserve®**

*Our five quality fungicides with StressGard Formulation Technology are proven to have preventive and curative properties against disease.*

For further information call:  
George Raymond 805-290-0413  
[george.raymond@bayer.com](mailto:george.raymond@bayer.com)



Bayer Environmental Science, a division of Bayer CropScience LP, 2 T.W. Alexander Drive, Research Triangle Park, NC 27709. 1-800-331-2867. [www.BackedByBayer.com](http://www.BackedByBayer.com). Chipco, Chipco Triton, Interface, Reserve and Tartan are registered trademarks of Bayer. StressGard and Signature are trademarks of Bayer. Not all products are registered in all states. Always read and follow label instructions carefully. © 2011 Bayer CropScience LP.



Bayer Environmental Science