



SUPER PROFILE

Dan P. Briesach,
Golf Course Superintendent

City & County of San Francisco,
Recreation & Park Department

Employer: City and County of San Francisco,
Recreation & Park Dept.

Position: Golf Course Superintendent

Years in the Golf Business: Eleven

Previous Employment: Baseball Diamonds,
Soccer Fields, Open Space, Pool Halls

Education: Horticulture Certificate, CCSF

GCSANC Work or Interests: Visiting/Playing
other golf courses

Other Organizations: ISA Certified Arborist,
Eureka Valley and Friends Benevolent Society

Family: Wife, two daughters, one
granddaughter

Interests Outside of Golf: I can't remember,
it has been so long.....

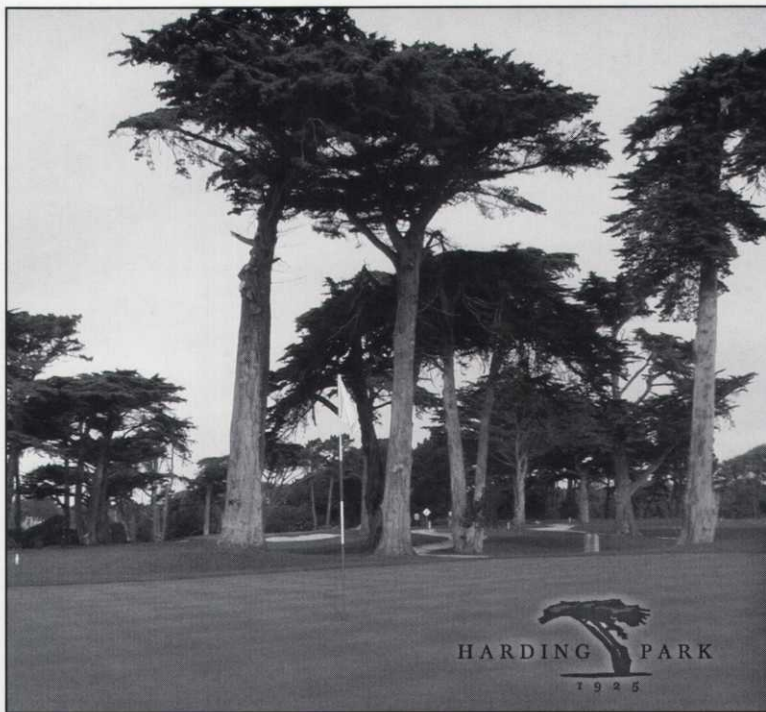
Favorite Vacation: Any beach!

Favorite Course to Play: Sharp Park

Course You'd Like to Visit: Stanford.....

**Strangest Thing You've Witnessed On The
Golf Course:** A Cypress tree wearing a bra...

**What You'd Be Doing If You Weren't
Involved With Golf:** Sleeping Late!



Harding Park's signature hole, number 16, is watched over by giant cypress trees that stand at attention as if to pay tribute to each player."

The City and County of San Francisco has 6 municipal golf courses under the jurisdiction of the Recreation and Parks Department, one being Harding Park. Harding Park Golf Course (18 hole) and Fleming (9 hole) Golf Courses are located at Skyline Blvd. and Harding Road in San Francisco.

Harding Park was designed by Willie Watson and opened in 1930. The course is bordered on three sides by Lake Merced, offering several scenic views of the surrounding area. This championship tournament course is on slightly rolling grounds and moderately forested with mature cypress and pine trees. Harding Park is one of the City-owned courses which hosts the annual San Francisco City Golf Championship, one of the oldest running amateur golf events in the country. Harding Park has also played host to numerous professional golf tournaments over its long history.

Long recognized as one of the hidden gems in the golfing world, Harding Park Golf Course has recently undergone an extensive improvement process to elevate its layout to world-class standards. Harding opened its doors to rave reviews. Harding Park is "A Celebration of San Francisco's Municipal Golf."

City of San Francisco officials, the PGA Tour and the general golfing public eagerly anticipated the new and improved course. Without the support from the former Mayor Willie Brown, Recreation and Park Department General Manager Elizabeth Goldstein and former USGA President Frank D. "Sandy" Tatum, Harding's transformation might never have taken place. Key elements in the restoration were to maintain the character and integrity of the golf course while enhancing its original design.

Harding Park Golf Course is located near the Pacific Coast along the shores of Lake Merced, near scenic Skyline Boulevard and the renowned San Francisco Zoo. Originally constructed in 1925, the majestic, cypress-lined Harding has played host to numerous professional tours such as The Lucky Invitational as well the popular San Francisco City amateur tournaments over the years. It remains the choice of locals and visitors alike.

www.harding-park.com

