

Renovation/Safety Project at Sunnyvale Municipal Golf Course

November 1988

PROJECTS INCLUDED:

- 1) Safety improvements
- 2) Re-design, totally;
 - a) 3 greens
 - b) 4 sets of tees
 - c) 5 lakes
 - d) 2 freeways
 - e) 30 additional sand bunkers
- 3) Cart paths
- 4) Landscaping
- 5) Parking lot expansion
- 6) Irrigation system
- 7) Clubhouse renovation
- 8) Maintenance facility re-location
- 9) Establish master plan policy to continue with re-model
- 10) Maintaining while operational, through aid of local golf groups
- 11) Utilizing, inhouse, strengths of Bob Sakamoto golf course supervisor and Pete Sandoval, greenskeeper

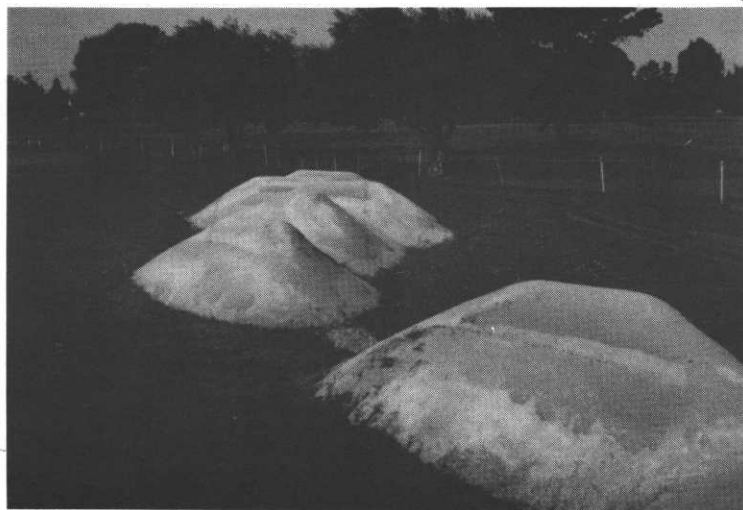
Existing problems:

- 1) Bisected by heavy traffic (hwy 37), safety issue
- 2) Average, typical municipal setting
- 3) Capital repair due to age
- 4) Lack of cities commitment due to low priority

Solutions:

- 1) Re-design problem areas away from traffic #2,8,13,14
- 2) Install protective screens for immediate control #2,8,14,16
- 3) Improve on original with extensive mounding, contouring and bunker additions.
- 4) Upgrade degree of difficulty due to new construction. eg. greens and lakes.
- 5) Generate 10 year review to replace on schedule all necessary equipment or systems to maintain new maintenance programs.
- 6) Develop new maintenance programs and scheduling.
- 7) Gain cities confidence through revenue projections to validate and pay for all needed expenditures; both routine and capital.
- 8) Develop plan to have monies loaned through city to golf fund to expedite program.

(con't on page 3)



AWARDS COMMITTEE SEEKS
NOMINATIONS

The GCSANC Awards Committee (Steve Carlton, CGCS ; Joe Rodriguez, CGCS; and John Winskowicz are currently soliciting nominations for Superintendent of the Year, Excellence in Golf Turf Management, Class F Merit Award, and Distinguished Service Award.

Nominations will be accepted by the committee until February 1, 1989 and awards will be presented at the GCSANC Annual Meeting in April.

SUPERINTENDENT OF THE YEAR

Criteria: Must be a member in good standing who has contributed in a manner which would be considered above and beyond the normal performance of their duties and is committed to outside activities for the betterment of the association and their fellow superintendents. Must not have received this award during the preceeding seven years.

EXCELLENCE IN GOLF TURF
MANAGEMENT

Criteria: Must be a member in good standing who has done a superior job of maintaining and grooming their golf course, keeping in mind unusual problem solving, budget, manpower, number of rounds, etc. Must not have received this award during the preceeding seven years.

DISTINGUISHED SERVICE AWARD

Criteria: Awarded to an individual who has made exceptional contributions to the Association, the Golf Course Industry and the community.

CLASS F MERIT AWARD

Criteria: Must be a Class F member who is deserving because of their dedication and contributions to the betterment of the Association, and who is giving of their time and resources to the Golf Course Superintendent. Must not have received this award during the preceeding seven years.

Please submit nominations and comments to the committee.

con't from page 1)

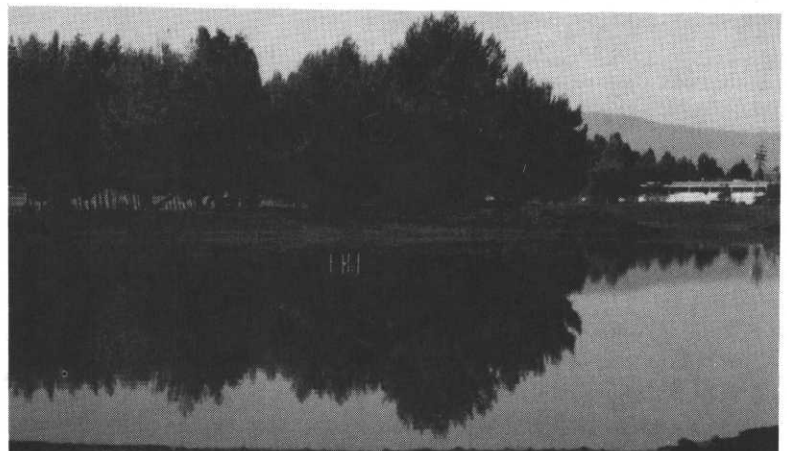
As you can see what was facing the City of Sunnyvale approximately 1 year ago. With all this in mind they created a position within the city structure to oversee this project or Fund 25. This fund is a self-supported "enterprise" fund; which means that we are seperated from our general tax base of the City. We are 100% fee supported and depend entirely on our golfers and licensees.

To correct the above problems would involve approximately \$5 million of funding. In order to implement, we would be loaned \$5 million from the Cities General Fund. This would be the first time in Sunnyvale's history that this would happen. This points out both the necessity and the Cities commitment to thoroughly improve their golfing facilities. The payback would be over a ten-year period. Over these ten years the cash flow was projected over \$35 million. The Cities commitment also extended to approving the largest projected increase within a program, a 46% operational increase. As one can see by the numbers these are no small programs and are extremely important in the Cities eyes.

The construction was started in late May of 1988 and was sceduled for completion in 120 days. The extent of construction was to shape through fine grading; from there existing staff took the project over from germination to establishment. May was selected primarily for optimum weather, and to eliminate the possibility of trying to germinate during the late fall, early winter months.

I would like to interject that at this point you need to have established a rapport with both your architect and construction people. As there will usually be some field corrections or changes. We were fortunate to have both, even though it wasn't a smooth road the entire journey.

(con't on page 5)



As we progressed through the project, we first seeded in early August and finished up our last area to be seeded in mid-September. The time element here was, in my mind extremely critical, primarily due to the wide variance of air/soil temperatures during this period. As an example, our germination period for a blue/rye mix was 8 days early in the project and 18 days at the end. The growth rate matching up closely with germination.

As we bring areas "in-line", we will attempt to open them for play. We are scheduling a re-opening for the first of Spring and it looks as if we're on schedule. I feel that we will have to raise mowing heights slightly the first year of operation to reduce stress on the new plant.

This on-going saga to be continued....

Ken Saki,CGCS

PEOPLE AND THEIR JOBS

GOLF COURSE SUPERINTENDENT

Leaps tall buildings in a single bound,
Is more powerful than a locomotive,
Is faster than a speeding bullet,
Walks on water,
Gives policy to God.

ASSISTANT SUPERINTENDENT

Leaps short buildings with a running start
and a favorable wind,
Is almost as powerful as a switch engine,
Is faster than a speeding BB,
Walks on water in an indoor swimming pool,
Talks with God if special request is
approved.

CHAIRMAN OF THE GROUNDS COMMITTEE

Lifts buildings and walks under them,
Kicks locomotives off of the tracks,
Catches speeding bullets in his teeth and eats
them,
Freezes water with a single glance,
His IS God.

NOTES ON THE GOLF COURSE CONSTRUCTION SEMINAR

Forty-eight people from all parts of the US and Singapore gathered in Pleasanton for the Golf Course Construction Seminar. We spent 2 full days building a Golf Course from a set of plans provided. We built tees, greens, fairways by grading complete to seeding. We discovered maintenance is more important to the customer than the Golf Course Design. Here are ten factors impacting a golf customer:

1. Aesthetics of entrance way and parking area.
2. Personality behind counter.
3. Cleanliness of Pro shop and rest rooms, golf carts.
4. Condition of practice green and first tee.
5. General condition of greens.
6. General condition of tees.
7. General condition of fairways.
8. General condition of sand traps.
9. General condition of roughs.
10. Design of the golf course.

MAINTENANCE DOES PAY! LET'S KEEP UP THE GOOD WORK!

1988 CHRISTMAS PARTY

December 2, 1988

Rancho Canada

9:30 AM Larry Lloyd Memorial Golf
Tournament-Shotgun Start

6:30 PM Hosted Cocktails

7:30 PM Steak or Catch of the Day

8:30 PM Awards

9:00PM Dancing until midnight

Cancellation Date- November 23-No
refunds after this date.

Current USGA or NCGA Handicap card
needed to compete for prizes.

MYRTLE'S NEWS NOTES

Gary Puckett from Heidleberg GC in Germany reports everything is so green, no water problems here other than too much at times. His problems-strict rules on spraying chemicals. He looks forward to seeing all of us in Anaheim.

Bob Ford CGCS, is the new Supt. at Oak Knoll GC in Ashland Ore. Bob is back at the first GC he started at-He says hello to everyone.