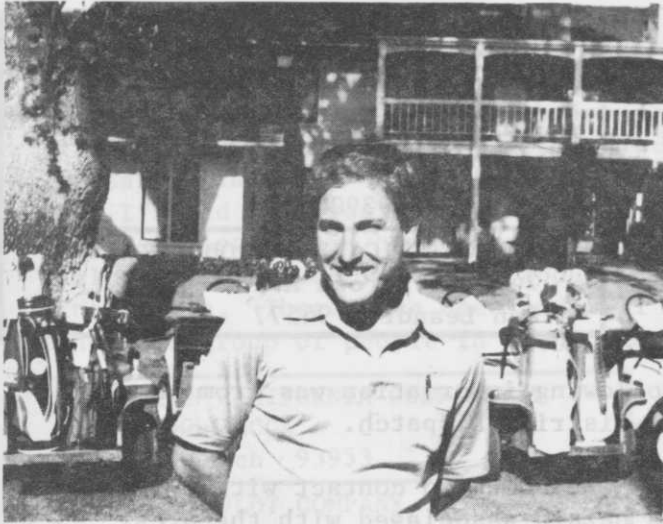


HOST SUPERINTENDENT

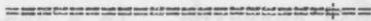


RICHARD LAVINE

Richard Lavine was a graduate of Cal Poly, Pomona in 1975. He has degrees in both Park - Administration and in Ornamental Horticulture. Rich was the Superintendent at Spyglass Hill GC and Castlewood Country Club before taking over at Marin Country Club. Rich has been at Marin Country Club for a little over 1 year.

Marin Country Club is about 6,200 yards, par 72, when measured from the white tees. Even though the course is not long, it is tight, with water and/or out of bounds on every hole. The club will be celebrating its 25th anniversary later in the year.

Please return your reservation card! Remember to obey all golf cart rules!



GUEST SPEAKER: Mr. Donald Hoos - Regional Director (Western Region) USGA.
"Topic" - Golf Course Drainage

AUTOMATIC RAIN CO - Willard Hayes 4060 Campbell Avenue Menlo Park 94025	BRAMAN PIPE & SUPPLY CO 1525 Walsh Ave Santa Clara 95050
BAY IRRIGATION & TURF SUPPLY 2041 Commerce Avenue Concord 94520	BROWN SAND, INC. 874 East Woodward Avenue Manteca 95336
KEITH BRAMAN, IRRIGATION CONSULTANT 21535 Stage Coach Road Los Gatos 95030	H. V. CARTER COMPANY, INC. 1700 E. 14th St -P.O.Box 12006 Oakland 94604

Eutrophication: a condition occurring in bodies of water where the water is deficient in oxygen and aquatic plants are abundant. This process is accelerated by the surface runoff of nutrients such as nitrogen and phosphorus.