

California Teamin' in 2004

Spectacular Seminar on Wheels Tours Planned

by Mike Trigg, CSFM; Conference Committee Chair

I hope you're already dreamin' about how great it's going to be in sunny California this coming January. The STMA 2004 Conference is headed to San Diego and some California Teamin'. It's a super opportunity to team up with your peers and fine tune your own management program.

There are great optional events on both Wednesday and Sunday. You can spend Wednesday picking up tips from the pros during the Major League Baseball Seminar. Or, you can experience one of San Diego's top golf courses and help the SAFE Foundation, teaming up in the SAFE-Jacobsen Fund-Raising Golf Tournament. If you'd like to spend Sunday taking a "tourists tour" of San Diego sites, that's an option, too.

The Wednesday and Sunday Seminar on Wheels tours let you "take the field" at some great San Diego sites. I've had the opportunity to see these sites and get a preview of some of the great information they have to share.

Seminar on Wheels Tour - Sunday, January 25th

Qualcomm Stadium

Host Steve Wightman, Stadium Turf Manager

As the San Diego Padres prepare for a new stadium on

2004, Qualcomm Stadium which opened in 1967 - known originally as San Diego Stadium, renamed Jack Murphy Stadium in 1981 -



has the distinction of being the only stadium left in the majors that originally housed a minor-league team before major-league expansion. The old Pacific Coast League San Diego Padres played in Qualcomm



Petco Park - under construction

Stadium for two seasons before the NL expansion San Diego Padres were unveiled on April 8, 1969. The Qualcomm has hosted a pair of World Series Games (1984 and 1998) and a pair of MLB All-Star Games (1978 and 1992).

Built as a multipurpose stadium for NFL'S San Diego Chargers and the Padres, Qualcomm Stadium is one of the few mid-sixties multipurpose stadiums that is aesthetically pleasing. One reason is that artificial turf was never installed here, and the other reason was a pleasing design that blended well into its surroundings: views of the regional hillsides were seen in the center-field area. However, over the years this pleasant design was gradually torn away as the stadium was redesigned to be more hospitable for the Chargers. The right-field bleachers were expanded in 1984, totally enclosing the park, and in 1997

continued on page 15

Visit TOROsports.com

PROUD TO SUPPORT STMA

TORO Count on it.

SPORTS TURF MANAGER

Official Newsletter of the Sports Turf Managers Association

1027 S. 3rd Street

Council Bluffs, IA 51503-6875

712/322-STMA (7862), 800/323-3875

(FAX) 712/366-9119, 800/366-0391

(e-mail) STMAHQ@st.omhcoxmail.com

(world wide web)

www.sportsturfmanager.com



Volume XXI Number 3
September/October 2003

OFFICERS

President

Bob Campbell, CSFM
University of Tennessee

President-Elect

Mike Trigg, CSFM
Waukegan Park District

Immediate Past President

Murray Cook
SPORTSTURF Services

Commercial Vice President

Monty Montague
GreenOne Industries

Secretary

Mike Andresen, CSFM
Iowa State University

Treasurer

Tim Moore, CSFM
The Brickman Group, Ltd.

BOARD MEMBERS

Abby McNeal, CSFM
Invesco Field at Mile High

Eric Adkins, CSFM
Spartan Stadium/Michigan State University

George Trivett, CSFM
Hickory Crawdads/Granite Falls Middle School

Boyd Montgomery, CSFM
Sylvania Recreation

Vickie Wallace
Turf-Seed, Inc.

Dr. Tony Koski
Colorado State University

NATIONAL HEADQUARTERS

Executive Director
Steve Trusty

Communications Director
Suz Trusty

NEWSLETTER EDITOR

Stephanie Watts
Trusty & Associates

NEWSLETTER TECHNICAL EDITOR

Dr. Gil Landry, Jr.
The University of Georgia

Sports Turf Manager is a publication of Sports Turf Managers Association (STMA). It is published bi-monthly and is free to STMA members. Sports Turf Managers' goal is to promote the mission of the association by providing a channel for communication between the representatives of the board and its constituency. STMA is not responsible for the opinions expressed in this publication. Address changes, advertising, photographs, and editorial inquiries should be directed to the executive offices. © 2003 Sports Turf Managers Association. All Rights Reserved.

Conference Chair's Message

by Mike Trigg, CSFM; Conference Committee Chair

First, thanks go to STMA President Bob Campbell for giving me the opportunity to "take his space" in this issue of the Newsletter. There is so much great information I want to share with you as Chair of the 2004 Conference Committee that we both felt this was the best forum to do so.

The dates are January 21 to 25 in San Diego at the Town and Country Resort & Convention Center. The Board had the opportunity to hold our Board Meeting at this site this past April so we could see the meeting rooms and trade show area set up for another Conference. It's going to be great! You can take your own "virtual tour" of the Town and Country via a link on the STMA website.

We've had great input from all of the Conference Education Subcommittee, with special thanks going to the Chair, Dr. John Sorochoan of the University of Tennessee. The educational program is packed with the information you want and need. We know that's true because we poured over your evaluations of previous STMA Conferences and reviewed all of the suggestions you offered. Though we can't fit everything into the timeframe allowed, please know we sure did try!

The kick off general session on Thursday morning will include a trio of presenters from "across the pond" to bring you up to speed on the latest sports turf developments in Great Britain. They'll be joined by Paul Caligiuri, Head Men's and Women's Soccer Coach for Cal Poly Pomona, for some input from this side of the pond. Caligiuri is a former member of the Los Angeles Galaxy and a veteran of the U. S. National Team.

The afternoon breakout sessions provide dynamite choices with four top speakers in each of four "Tracks." "Managing for Dollars" focuses on developing systems for making each dollar count while achieving the best possible results. "Turfgrass Soils" goes below the surface to where the building blocks of a great playing field begin. "Getting to the Dirt of Baseball" concentrates on infield dirt - from selection to grooming. The "Synthetic

Turf Management" track focuses on the questions and answers surrounding installation and management issues.

Friday is Workshop Day.

With ten options of two-hour in-depth sessions to choose from both morning and afternoon there's sure to be a workshop to address your specific needs.

Saturday brings everyone together for a strategy-filled general session to help you unlock your personal and professional potential to more effectively "Market Yourself as an STMA Professional." That leads to more breakout sessions with dynamite choices in each of four "Tracks." You can focus on: "Media and Public Relations" to sharpen your skills in getting your points across to your target audience, no matter what the situation, "Electronic Turf" with ideas for getting the most from the internet, "High Profile Stadium Management" with tips on top performance in the spotlight, or tap into the always popular "Tricks of the Trade" sessions. The afternoon wraps up with the interactive Round-Table discussions where your turf team joins in the idea and information exchange - a networking bonanza for all.

And that's just a brief overview of the educational sessions!

The Chapter Officer Training and Idea Exchange Session is a pre-Conference interactive forum on Tuesday afternoon. There are three optional events on Wednesday followed by the Wednesday afternoon "Jam Sessions" to focus on facility-specific issues - and connect with your peers. Then comes the poolside opening reception on Wednesday night, the awesome Friday night Awards Banquet - and the great Trade Show Thursday and Friday - all at one super site - The Town and Country Resort & Exhibition Center.

So bring your team for the best California Teamin' you can imagine. See you there!



STM

SOIL TESTING FOR NUTRIENT EVALUATION AND CHEMICAL PROBLEMS*

C. Owen Plank and Gil Landry, The University of Georgia

One of the basic turf management practices that often gets overlooked as we become more attracted to what might be called the "WOW" of science is routine soil testing. As a friend of mine said, "I told the crew to lime all the fields, but later this spring one field would not respond like the others. We tried extra applications of nitrogen and micronutrients so after two months I decided to test the soil and found the pH to be 4.9." It can be difficult to grow grass under those conditions.

The first step to determining the soil fertility and planning a sound fertilizer program is a soil test. Soil tests are used for identifying nutrient deficiencies, evaluating potential excesses or imbalances of essential nutrients, heavy metals, or salts, and assessing other important soil chemical aspects (organic matter content, cation exchange capacity, etc.) that may influence turfgrass growth.

One of the most important and probably one of the weakest steps in a soil testing program is soil sampling. Soil types at a facility may vary significantly from one field to another or even from one end of a field to the other. This commonly occurs when there is significant soil movement during construction or when soil is brought in to the site. Thus, if samples are not taken properly, the test results are of little value or even misleading. Remember, that one pint of soil in the bag must represent the entire field. Therefore, extreme care should be taken during sample collection because soil test results are no better than the sample submitted to the laboratory. Below are some guidelines to aid in collecting a representative soil sample.

- Collect samples using clean sampling tools and a plastic bucket. Use of metal containers for collecting and mixing samples may result in contaminating the sample with some micronutrients, e.g. manganese (Mn) and zinc (Zn), invalidating these tests.
- Collect subsamples from defined areas in a random pattern. Sample similar areas together with at least 15 subsamples or soil cores from an area to make a composite sample. Sample each field separately unless you know fields can be consolidated because they have the exact same soil type and have been fertilized, irrigated, and cultivated the same.
- Sampling depths will vary depending on soil conditions and whether the area is being sampled for establishment, maintenance, or troubleshooting purposes. It is important to follow the sampling guidelines of the laboratory performing the analyses. Some suggested guide-

lines for sampling depths include sampling the top six inches for establishment but sampling only the top three to four inches for established turf areas.

- Carefully mix the subsamples and obtain a representative sample that contains sufficient soil for analyses. Usually one to two cups of soil is sufficient. Some laboratories now provide "fill lines" on the sample container to insure adequate sample volume.
- Keep good records of where samples were obtained and the particular code used to identify a sample.

Although samples can be obtained at any time of the year it is suggested that samples be collected before the most stressful part of the year. Also, samples should not be collected within two weeks of phosphorus (P), potassium (K), or magnesium (Mg) fertilization. If results are being compared from one sampling period to another, samples should be taken at the same time each year. This is because there can be some seasonal variation in results for some analyses. For example, soil pH values will generally be lower in July or August as compared to January or February.

Highly managed areas and fields where one is trying to alter some soil chemical aspect such as pH, P levels, salinity, etc. should be sampled annually. Routine sampling every 2 to 3 years is usually adequate for medium to fine textured soils once an annual sampling history is established.

Air dry the soil in an area free of fertilizer dust and include all information requested by the laboratory. The laboratory will grind the sample to break up any aggregates and screen it to uniform size (<2mm, or 10 mesh).

It is important to note that once a sampling strategy (sampling depth, sampling time, etc.) has been developed one should maintain that strategy. This is particularly important to compare results over several years to determine trends in fertility levels. For example, have the P and K management practices used resulted in an increase or decrease in the soil nutrient levels? If one does not follow consistent sampling strategies each year, such comparisons cannot be made.

Nitrogen Recommendations

Nitrogen recommendations are developed in a slightly different manner than other nutrient recommendations. Whereas, Phosphorus (P), Potassium (K), Calcium (Ca), and Magnesium (Mg) recommendations are based on the amount of each nutrient extracted from a soil, N recommendations are not. Because of the many factors that influence the amount of N present in a soil at

continued on page 4

SOIL TESTING FOR NUTRIENT EVALUATION AND CHEMICAL PROBLEMS

continued from page 3

any given time, laboratories do not test samples for N for the purpose of making recommendations. Nitrogen recommendations are developed through a series of field experiments that are conducted over several years in which variable rates of nitrogen are evaluated relative to selected turf properties. Some laboratories will then modify the recommendation based on the amount of organic matter in the soil. Therefore, N recommendations for turf can vary considerably depending upon how it is to be used, the rate of growth and color desired, and the geographical region in which it is being grown.

Phosphorus (P) Recommendations

Phosphorus recommendations for turf are based on soil test P levels, the intended use and management practices that will be used. For most turf, phosphorus applications are recommended for very low, low and medium testing soils. Several laboratories recommend phosphorus applications on high testing P soils for turf establishment. This is due in part to the critical role that P plays in promoting early root and vegetative development during the initial phases of turf establishment.

Except for sandy, acid soils, P does not leach like N or K. However, in fine-textured soils P becomes bound to different soil components and with continued indiscriminate applications can build up to excessively high levels. In some cases it may become a potential environmental hazard leading, for example, to water pollution. As developments encroach upon tributaries and other environmentally sensitive areas, turf managers will need to rely much more on soil testing in the future to guide fertilization practices than they have in the past.

Potassium (K) Recommendations

Potassium recommendations are based on K soil test levels and turf management practices. Potassium is generally recommended on very low, low, medium, and high testing soils. However, very few laboratories recommend potassium fertilization on very high testing soils. In some cases recommendations are modified for sandy soils to allow for the higher rate of leaching compared to finer textured soils. Thus, it is generally recommended that the annual rate of K be divided into split applications to help prevent K from leaching below the root zone and preventing potential K deficiencies. The K applications can be made in combination with the N applications not to exceed 1.5 lb. K₂O per 1000 ft² per application.

Maintaining adequate K in the root zone for turfgrasses is very important. Potassium contributes cell

turgidity. Potassium-deficient turfgrass tends to lose stomatal control and transpirational loss of water is high, turgidity decreases, and wilt is more prevalent. However, when K levels in the soil become excessive, high soil salinity limits plant water uptake, induces wilt, and reduces wear tolerance. Saline conditions can easily build up in sandy soils if high levels of salts are added (via fertilization, irrigation) and leaching is limited.

Calcium (Ca) and Magnesium (Mg) Recommendations

Few laboratories have specific recommendations for these nutrients if they are found to be low. Generally, low levels of these nutrients are associated with low soil pH and are corrected by the application of dolomitic limestone to increase pH.

While Ca deficiency is very rare, Mg deficiency can occur on very acidic and on low cation exchange capacity (CEC) soils such as sandy soils that are subject to frequent leaching. Also, Mg deficiency may be induced by large applications of calcitic limestone or

continued on page 6

THATCH MASTER

FINE TURF VERTI-CUTS



Now
available
in 72"
Width

BENEFITS

Along with other management practiced, regular verti-cutting is a tool that can help to maintain or create a World Class field.

It does this in several ways:

1. Cuts both stolons & rhizomes creating growth and a thick, lush turf.
2. Removes excess thatch allowing gas exchange and facilitating water infiltration.
3. Creates seedbed for overseeding.
4. Helps transition by thinning out overseeded grass and stimulating growth of the underlying turf.

Turf Specialties, Inc
1-800-201-1031

Iowa Sports Turf Managers Association:

The Iowa Chapter will hold a Soccer workshop from 8:00 am to 3:00 pm on October 14 at Pioneer Park in Des Moines. Along with lunch and time set aside to visit with vendors, the agenda includes: a welcome by Ken Trytek of the James W. Cowie Soccer Complex; the Year in Review by Jeff Wendel; presentations by Dr. Dave Minner and Mike Andresen, CSFM, of Iowa State University; Goal Box Repair by Joe Wagner of the City of Iowa City; Fall Preparation by Kevin Vos, CSFM, of the City of Muscatine; and Multi-Field Use by John Newell of the City of Burlington Regional Recplex. Ken Trytek also will conduct a walking tour of the facility.

For information on the Iowa Chapter, or upcoming activities, contact Jeff Wendel of The Turf Office at tel. 515-232-8222, or fax 515-232-8228, or e-mail: Jeff@iowaturfgrass.org.

MO-KAN Sports Turf Managers Association:

The Mo-Kan Chapter will meet at the Kansas Speedway and Community America Ballpark from 8:00am to 3:00 pm on October 15. Registration begins at 7:30 am. This will be a unique opportunity for a behind the scenes tour of the Kansas Speedway. Following lunch in the infield garage area, attendees will tour the new Community America Ballpark, home of the Kansas City T-Bones Baseball Club.

For information on the MO-KAN STMA Chapter, or upcoming events, call Jody Gill at 913-239-4121 or JGill2@bv229.k12.ks.us.

Ohio Sports Turf Managers Association (OSTMA):

Reminder: Applications must be postmarked by October 15 for the OSTMA Educational Scholarship Program, STMA National Conference Scholarship Program and the OSTMA Field of Distinction Award. See the OSTMA newsletter or website for details.

For information on the OSTMA Chapter, or upcoming events, call OSTMA Headquarters at 888-824-9805 or 419-824-9805 or Boyd Montgomery, CSFM, at 419-885-1982; or visit the chapter's website at www.ostma.org.

Minnesota Chapter STMA:

The Minnesota Chapter is planning a Fall Workshop for October 16 in Woodbury. The schedule will include a mixture of educational sessions, hands-on activities and networking. More details will be announced on the website.

For information on the Minnesota Chapter, or upcoming events, contact Jeff Hintz, Bethel College & Seminary, St. Paul, Minnesota at tel. 651-638-6075 or e-mail: j-hintz@bethel.edu or check out the Chapter website: www.mstma.com.

Keystone Athletic Field Managers Organization (KAFMO/STMA):

The KAFMO Cup Open will be held on Monday, October 20, at Fairview Golf Course in Lebanon, PA. This golf tournament is the main fundraiser for the KAFMO Scholarship Fund. For more information on this event, contact Steve LeGros at 717-534-3167, email kafmo@aol.com or check out the Chapter's webpage on the STMA website: www.sportsturfmanager.com.

For information on the KAFMO/STMA Chapter or upcoming events, contact Dan Douglas, Reading Phillies Baseball Club, at tel. 610-375-8469, ext. 212; or e-mail to: kafmo@aol.com.

Florida Chapter # 1:

The Florida Chapter will meet on October 21 at the City of Pinecrest. The educational focus for this event is: Overseeding Bermudagrass Athletic Fields. For information on the Florida Chapter, or pending activities, contact John Mascaro at 954-341-3115 or STMA@Turf-Tec.com.

continued on page 7

OFFICIAL STMA CHAPTER SPONSORS

Gold Sponsor



JOHN DEERE

Silver Sponsors

Alpine Services, Inc.
PREMIUM SPORTS FIELDS

Hunter
The Irrigation Innovators

S
stabilizer
SOLUTIONS

syngenta

SOIL TESTING FOR NUTRIENT EVALUATION AND CHEMICAL PROBLEMS

continued from page 3

large applications of K. To help prevent this problem from occurring use dolomitic limestone as the liming source. If a Mg deficiency is suspected, a plant or tissue analysis will aid in confirming the diagnosis. An alternative method is to apply a foliar application of 1 lb. magnesium sulfate (i.e. 0.1 lb. Mg) per 1000 ft² in 2 to 3 gallons of water. If Mg is deficient, the turf will start to green up in generally less than five days. In severe cases, higher rates need to be applied. Another alternative is to apply Mg in the regular fertilizer program.

Sulfur (S-SO₄) Recommendations

Although procedures are available to determine sulfate-sulfur (SO₄-S) levels in the soil, because of its mobility, particularly on coarse-textured soils, few soil test laboratories do this on a routine basis. Instead some laboratories make a routine recommendation.

Micronutrient Recommendations

Until recently, few research studies have been conducted relating turfgrass performance to micronutrient deficiencies. Consequently, with the exception of Fe and Mn, extractants used for assessing the availability of micronutrients have not been evaluated extensively on turf. Although extractants for Fe and Mn are best correlated, they are not very reliable for predicting maintenance or corrective treatments. This may be due in part to the fact that most turfgrasses are very efficient in utilizing micronutrients in the soil.

Iron (Fe) deficiencies are readily apparent from plant symptoms - chlorotic turf with yellowing being most apparent on the new leaves; spindly, thin leaves; chlorosis often occurs in irregular patches rather than uniformly across the turf. Application of foliar Fe at 1 lb Fe/acre will result in rapid greening of the turf. Grasses often respond to foliar Fe even when there isn't a Fe deficiency; thus, a true deficiency is present only if real Fe-deficiency visual symptoms are present.

Manganese deficiencies are most prevalent on near neutral to alkaline pH soils. The solubility of Mn in soils is strongly influenced by soil pH and deficiencies are rarely encountered in turfgrass growing on soils with a pH less than 6.5.

Therefore, for a Mn soil test to be meaningful, soil pH must be included in the interpretations. If soil pH is not taken into account with the extractable soil Mn level, the soil test may indicate a low soil level, even though the level is sufficient for good growth. If a Mn deficiency is suspected it can generally be confirmed by plant analysis. Another method for confirming a suspected Mn deficiency is to apply a foliar application of Mn, using 1 lb. of Mn/A in sufficient water to thoroughly wet the foliage. If Mn is deficient, a greening response will occur in a few days. The following table lists some examples of spray rates that can be used to spot check for micronutrient deficiencies.

STM

McCarty, et al., 1993)

| Element | Fertilizer source | Product oz. per gal | Lb. element per 1000 ft. ² | Lb. element per acre |
|---------|-------------------|---------------------|---------------------------------------|----------------------|
| Fe | Iron sulfate | 0.75 | 0.025 | 1.1 |
| Mn | Manganese sulfate | 0.50 | 0.025 | 1.1 |
| Zn | Zinc sulfate | 0.50 | 0.010 | 0.44 |
| Cu | Copper sulfate | 0.50 | 0.003 | 0.13 |
| B | Sodium borate | 0.05 | 0.001 | 0.04 |
| Mo | Sodium molybdate | 0.01 | 0.001 | 0.04 |

*Article adapted from web page information at www.georgiaturf.com.

Traler Groomer™ AFM™ from Kromer



NOW an ECONOMICAL tow type groomer for use on baseball fields, soccer fields, football fields, tracks, rugby fields, and cross country lines. Conditions, levels, paints lines and sprays chemicals. Athletes enjoy playing on **KROMER** maintained **SAFE** fields.

The Traler Groomer™ from **KROMER** may be equipped with any of these attachments: Harrow; Leveling Blade; Broom; Drag Mat & Carrier; Tank; Pump; Spray Boom; Spray Booms; Controls; Electric Lift; Cargo Box; Hand Guns. All attachments are quickly removable and are the same as used on the **KROMER AFM™** self-propelled machine.



Our Field is Preparing Your Field!

Kromer Co. LLC
1-800-373-0337
www.kromerco.com



GN-1™ Hybrid Bermuda

- Exceptional dark green color
- Lower maintenance costs
- Excellent wear recovery
- Good cold tolerance

Pacific Sod
The Professional's Choice
800 942-5296
www.PacificSod.com

Is your turf
as tough
as your
team?



DOC'S DUGOUT - An Inning From Our Past

By Dr. Kent Kurtz - STMA Historian

Color It Green - The Story of Turf Colorants & Larry Krieger

Early Days with the Paint and Movie Industry

Michael Krieger and his wife Rose came to Los Angeles from New York in 1917 to start a business in the paint industry. He had worked for a New York based company that specialized in dyes and colors for textiles and rugs with one of their main suppliers being Dupont. Michael established his own company in Hollywood, Krieger Color & Chemical Company, Inc. The company moved several times from 1917 - 1962, from 611 E. 9th Street, 6531 Santa Monica Blvd., Vine & Franklin streets to 927 N. Citrus where the turf colorant business blossomed until 1986. Michael and Rose had three children, Bernard (Barney) 1917, Lawrence (Larry) born in 1923 and Gerry (1925). Throughout the years all of the Krieger children worked for the family business, but it was Larry and Gerry who carried on the family tradition into the 1980's.

Krieger Color in the early years specialized in colors and dyes for rugs and textiles. Later they perfected colors for the blue screen and other photographic color chemicals used by the movie studios. Krieger Color supplied the primary colors for "Technicolor" - cyan (blue), magenta (red) and yellow.



Upland Soccer Complex - 1980 trials on turf colorant.

Technicolor was located two blocks from Krieger Color. Krieger Color also sold all of the gold leaf used in the Grauman's Chinese Theatre and the Egyptian Theatre.

Another product consisted of color chips used in the plastic

injection mold business. Most importantly, they were the pioneers in paints for movie sets, including colors for lawns, groundcovers, foliage and backdrops. They supplied colors to make movie set areas and landscapes brown, black, green or whatever color they needed, plus special effects.

Development of Specialty Products and Turf Colorants

Larry Krieger was introduced to the movie industry when he accompanied his father on visits to movie studios. Larry decided at an early age that he didn't want to join his father's company. Instead he wanted to be an actor and began accepting bit parts in movies and working as a magician's helper. During this same period he attended classes at a local college in chemistry and textiles. Eventually, he changed his mind and joined his father in



Larry Krieger, 7-K color, assisted by Dr. Vic Gibeault, Cal Poly baseball field, January 1971.

Krieger Color & Chemical Company during the 1940's. Larry bought his father's business in 1962 and changed the name to 7-K Color Corporation. Larry created and experimented with new products while also testing and marketing of his complete color line. He also employed his sister,

Gerry, to run the business side of the company. Larry felt that his acting experience was invaluable later in his career when he had dealings with the studios concerning paints. This enabled him to develop paints and polyester dyes for the props and sets of many famous movies and television shows.

continued on page 9

Southern Athletic Fields

SAF is your complete source for all athletic field needs.

SAF offers:
Mar Mound Clay
Field Conditioners
Drying Agents
Infield Mixes
Topdressing Materials
Warning Track

We also offer various field accessories!
Call today for more information

Toll Free
800.837.8062

Be sure to check out our website:
www.mulemix.com



Chapter Events

continued from page 5

The Greater LA Basin Chapter of the Sports Turf Managers Association:

The Chapter will hold its General Meeting and Election for 2004 on October 22 at 3 PM at the Japanese Garden of Cal State University - Long Beach.

For information on the Chapter or pending events, call Steve Dugas, California State University - Fullerton, at 714-278-3929 or email sdugas@fullerton.edu.

North Texas Sports Turf Managers Association:

The North Texas Chapter will hold a combination Irrigation School and Scholarship Golf Tournament in Mesquite Texas on October 23. The morning session on Irrigation Troubleshooting will be held at the Dunford Recreation Center. The golf outing will start with lunch at the Mesquite Municipal Golf Course. More details will be announced soon.

For information on the North Texas Chapter, or pending activities, contact Kathy Cassmeyer at 972-603-2869 or Katherine.Cassmeyer@lmco.com, or visit the website at www.ntstma.org.

Pacific Northwest Sports Turf Managers Association:

The Chapter is looking into sites for their community service Fall Work Day. This will be a hands-on community renovation and training day. Details to follow soon. For information on the chapter or upcoming events, contact: Jay Warnick - JayW@Seahawks.com or Mike Wagner - MWagner@Oregon.UOregon.edu.

Sports Turf Managers Association of Arizona:

For information on the chapter, or upcoming events, contact Chris Calcaterra at e-mail: chrisc@peoriaaz.com or tel. 623-412-4231 or Bill Murphy, at e-mail: bmurphy@ci.scottsdale.az.us or 480-312-7956.

Northern California Chapter of the Sports Turf Managers Association:

For information on the Nor-Cal Chapter, or pending events, call Janet Gift at 530-758-4200 or email Emory Hunter at emhunter@usa.net.

Southern California Chapter:

For information on the Southern California Chapter, or pending activities, call Michael Tarantino at 858-679-2526 or MTarantino@powayusd.com.

Colorado Sports Turf Managers Association:

For information on the Colorado Chapter, or upcoming activities, visit the Chapter's website--www.CSTMA.org--or call the CSTMA Chapter Hotline at 303-346-8954, or contact Chapter President Phil McQuade at 303-237-7188 or e-mail pmcquade@jeffco.k12.co.us.

Gateway Chapter Sports Turf Managers Association:

For information on the Gateway Chapter or upcoming events, call Mike Krone, Missouri Baptist College, 314-392-2328 or email krone@mobap.edu.

Georgia Sports Turf Managers Association:

For information on the chapter or upcoming events, contact Skip Kirby at 770-928-1580 or email skip@sportsturfmanagement.com

Indiana Chapter:

For information on the Indiana Chapter, or pending activities, contact Stan Moscrip, Indiana University, at 812-856-2256 or smoscrip@indiana.edu.


Kentucky Sports Turf Managers Association:

For information on the chapter or upcoming events, contact Tom Nielsen at TNielsen@batsbaseball.com or Aaron Boggs at AVBoggs@netscape.net.

Chesapeake Chapter STMA (formerly MAFMO Chapter STMA):

For information on the Chesapeake Chapter, or other pending activities, call the Hotline at 866-818-8873 or email Nick Gammill, CSFM, at ngammill@american.edu.

continued on page 11

The Vision  The Reality
rettler corporation

- Landscape Architecture
- Engineering
- Land Surveying
- Site Construction Management
- Maintenance Programming
- Site Maintenance

Our professionalism and dedication for safety first on any athletic field coupled with complete service and quality make us a valued partner for your project.

"Rettler Corporation Turns Visions into Reality"

3317 Business Park Drive .. Stevens Point, WI 54481 ..
Telephone .. 715.341.2633 .. Fax: 715.341.0431 .. Email: info@rettler.com

DOC'S DUGOUT - An Inning From Our Past

continued from page 7

Larry developed the green color Lou Ferrigno wore in the original "Incredible Hulk" program on television. Larry was a brilliant, talented, genius with colors and their ingredients and formulations that he applied to numerous surfaces. With the "Incredible Hulk," the green color was not allowed to run, smear or disappear under the hot lights on the set, so he developed a color fast green color. Later he put this knowledge into some of the turf colorants that he developed in the 1980's. Krieger Color not only assisted in the film industry's development of color motion pictures but also in coloring such items as fruit, food, foliage, landscapes and textiles when they failed to photograph properly. The colors enhanced the objects and it became a standard requirement in shooting movies for Krieger to make living foliage, lawns and sets look natural.

Finally, Larry's big break came in 1954 when President Dwight Eisenhower visited Palm Springs to play golf. In those days greens and tees were overseeded with annual ryegrass but the fairways were dormant and brown. Industry executives called Larry to green up the fairways at the Tamarisk Country Club so Ike could follow the ball better after it was hit from the tee or fairway. Success fol-

lowed Larry in the golf industry as the Arizona Country Club and Phoenix Country Club, site of the Phoenix Open Tournament, employed him to color their fairways in 1957. In the late 1950's Larry Krieger was employed to apply his colorants on the fairways at the Bel Air Country Club and the Riviera Country Club in Los Angeles. Based upon Larry's success in the golf industry many sports turf venues began to seek his expertise and advice on colorizing their facilities in the 1950's and 1960's.

In 1957 Larry created a new turf colorant that he named "Green Stuff". This new turf colorant was introduced and used at Burbank Studios to improve the appearance of the grass on set locations. In later years the paint shop manager at the Burbank Studios contracted Larry to use his colorant in Chicago for a new football movie, ("First and Goal", starring Goldie Hawn) to improve the look of the grass. After filming part of the movie with the Green Stuff, they wanted the grass to look dormant again and a brown colorant was used for this. Green Stuff was used again to restore the grass to its healthy looking state.

Early Evaluation of Turfgrass Colorants UCLA Study 1957

During the fall of 1957, UCLA conducted a series of turf colorant tests under the direction of the late Dr. Victor B. Youngner. The five materials consisted of Dow's M-819 (Dow Chemical Co.), Green Plasma (Midland Chemical Co.), Greenzit (W.A. Cleary Co.), Stayz-Green (O.E. Linck Co.) and Green Stuff (Krieger Color & Chemical Co.).

These tests indicated differences among the 5 products with regard to shade of color, fading, rub-off and degree of natural appearance. Based upon the UCLA studies by Youngner and his staff, 8 weeks after the application, Krieger's Green Stuff was found to be superior to the other 4 materials. This gave Larry the impetus to market the Green Stuff to both the golf course and sports turf industries. He was successful in selling and applying his colorants at the Los Angeles Memorial Coliseum, the Rose Bowl, Dodger Stadium and scores of other athletic venues and the Cal Turf sod farm in Camarillo, California. One of the primary advantages for the use of colorants compared to the normal practice of overseeding ryegrass is that the dormant grass is not forced to overcome the competition of the ryegrass when growth is resumed in the spring.

Cal Poly Study 1971

The demand for continuous green color for sporting events when bermudagrass is dormant increased during this era because of color television and an awareness and desire for perpetual beauty by the American public. The study was conducted on the baseball field at Cal Poly Pomona during the winter of 1971. The individuals who participated in this study were the late Larry Krieger (7-K Color Corporation), the late

continued on page 10

IT'S OKAY TO BE LAZY

Save time, money, and energy! Here's why it's okay to be LAZY. Fastliner Paint can stay in your linemarker "application tank" for 10 to 14 days and then be used AGAIN without adding new paint or without cleaning your tank. Fastliner Paint is as brilliant white the 14th day as it is the 1st day.

Why Fastliner Paint is above the rest

- High quality line marking material ensures brilliant white lines, even on poor surface conditions
- Physical properties include rain resistant characteristics
- 4 Gallon containers for clean, easy handling
- Color additives available in yellow, red, blue and green
- Super concentrate dilutes 5 to 1

Call us at 1.800.228.1003 ext.34
Or visit us on the web at www.broyhill.com
www.fleetlinemarkers.com



Fleet Broyhill L.L.C.
when only perfection will do

DOC'S DUGOUT - An Inning From Our Past

continued from page 9

John Van Dam (Turf Advisor Los Angeles County), Dr. Vic Gibeault (University of California, Riverside) and Dr. Kent Kurtz (Cal Poly, Pomona). Ten colorants commercially available in 1971 were used for this study and included: Cal Verde (Cal Turf Sod Farm), Everbright (Davis Paint Co.), Green Stuff (7-K Color Corp.), Greenzit (W.A. Cleary Co.), Sta-Green (Talaco Chemical Co.), Stayz Green (O.E. Linck Co.), Vichem Green (Vineland Chemical Co.), Vitalon Dark & Light (Mallinckrodt Chemical Co.), and Winterlawn (Graniteville, Co.).

After the conclusion of the six-week study, the Green Stuff marketed by Larry Krieger's 7-K Color Corporation had the highest color intensity ranking. At the completion of the test, no plant injury was observed with any of the products. The bermudagrass broke dormancy earlier in the treated areas compared to dormant areas not treated and *Poa annua* was more prevalent in the non-treated control areas than in the colorant treated areas. Comments by coaches and players indicated colorant acceptance. Players stated that baseballs were easier to follow in the treated areas and discoloration to balls, uniforms and equipment were nonexistent.

Based upon the above study, another project to compare the Economics of Overseeding and Colorizing Dormant Bermudagrass was conducted at a golf course in San Bernardino, California, by the late John Van Dam, Turf Advisor, the late Larry Krieger, 7-K Color Corporation and Dr. Kent Kurtz, Cal Poly Pomona in 1972.

Green Stuff was applied on one fairway with a boom sprayer and the adjacent fairway was overseeded with ryegrass. The per-acre cost of purchasing and applying the Green Stuff cost \$87.75 while the cost of the seed, and preparing, seeding and maintaining the fairway with mowing, fertilizing and watering cost \$327.30/acre. Overseeding was four times more expensive per acre than using turf colorants.

Cal Poly Study 1980

The final evaluation with Larry Krieger's assistance was conducted on the 15-acre soccer complex in Upland, California on Santa Ana hybrid bermudagrass in 1980.

Between the 1971 and 1980 studies several colorants were no longer available. Thirteen colorants were applied to the dormant turf, six of these were new or reformulated by Larry Krieger at 7-K Color Corporation. The colorants included Cal Verde (American Garden-Cal Turf), Everbright (Davis Paint Co.), Greenzit (W.A. Cleary Corp.), Nu-Type (The Gregg Co.), Stay Green (Research Product Co.), Vitalon Dark (Mallinckrodt, Inc.), Winterlawn (Virginia Chemicals, Inc.), and the 7-K Color materials developed by Larry Krieger - Green Stuff 100-8 & 100-9, Bluegrass 79-1, Super Bluegrass 76-1, Emerald 77-1, and Lucky Mix 77-7 (Super Sports Turf Green).*

The colorants were evaluated over four observation dates by a group of women selected by Sally Prusia, a student at Cal Poly. Top ranking colorants included Lucky Mix (Super Sports Turf Green), Greenzit, Super Bluegrass, Emerald, and Bluegrass. The areas covered by the colorants broke dormancy 3 to 4 weeks earlier than the non-treated areas. The top ranking colorants showed great potential to be used on sports turf and should be used by sport turf managers when necessary to enhance their facilities.

Due to failing health, Larry Krieger sold 7-K Color Corporation in 1986 to the Special-T Coatings & Chemicals, Inc., North Hollywood, Ca. Larry passed away in May of 1990. With his passing the sports turf industry lost a friend and pioneer who had the creativity to formulate and mix any color of green for a turfgrass surface. There are so many opportunities for the use of good colorants in the turf industry where brown spots, disease, physical damage, fertilizer burn, color for dormant turf, etc. may pose problems. People like Larry Krieger are difficult to replace. He was a genius who understood paints and color. He was a brilliant man who was not afraid to take risks when his colorants were applied to sports turf. We will always remember him as an individual who made grass greener.

** Larry Krieger and Dr. Kurtz mixed up the colorants the night before their application on the Upland Soccer Complex. While talking and laughing, one of the colorants Larry Krieger created to use was mixed wrong and it was named "Lucky Mix". Ironically, the committee of ladies who conducted the evaluations rated "Lucky Mix" the best colorant. At the conclusion of the study Dr. Kurtz named this colorant, Super Sports Turf Green.*

Editors Notes: Many wonderful individuals sent information to me to make this article possible: Gerry Dorsey (Larry Krieger's sister), Robin Nipper (Larry Krieger's daughter), Adrienne Cohan (Larry Krieger's Niece), Rudy Hernandez (Larry Krieger's former assistant), and Alastair Macdonald (President-Special-T Coatings & Chemicals, Inc., the company that purchased 7-K Color Corporation). To all of them thanks for sharing your memories of a very special man.

STM



Quality you can see
and trust... just ask the coach

Growing premium
turfgrasses for Colorado
and the midwest

Family owned and operated since 1979



GRAFF'S
TURF FARMS

www.graffsturfarms.com
800.280.TURF

Mike Shanahan
Head Coach
Denver Broncos Football Club

Chapter Events

continued from page 8

Michigan Sports Turf Managers Association (MiSTMA):

For information on the Chapter or pending events, contact MiSTMA Headquarters at 517-712-3407, or email Amy Fouty, University of Michigan, at fouty@umich.edu, or go to www.mistma.org to visit the chapter's website.

Midwest Chapter STMA:

For information on the Midwest Chapter, or pending activities, visit the Chapter's website-<http://mcstma.org>--or call Libby Baker at 847-263-7603 or email Bake60ft6in@aol.com.

Nebraska Sports Turf Managers Association:

For information on the Nebraska Chapter, or upcoming events, call Loren Humphrey at: 402-461-2324 or email to lhumphrey@cityofhastings.org.

Sports Field Managers Association of New Jersey:

The Sports Field Managers Association of New Jersey will again participate in the **New Jersey Turfgrass Expo 2003** which will be held December 9-11, 2003 at the Trump Taj Mahal Resort & Casino, Atlantic City, New Jersey. This three-day Conference will feature over 50 educational presentations and one of the top trade shows in the country. Call Bea Devine at 732-821-7134 or Dick Caton at 856-853-5973 for further information or directions.

For information on the New Jersey Chapter, or upcoming events, call SFMANJ at 908-730-7770 or Eleanora Murfitt at 908-236-9118; or e-mail to HQ@sfmanj.org.

Tennessee Valley Sports Turf Managers Association (TVSTMA):

For information on the TVSTMA Chapter, or upcoming events, call Chapter President, Bob Elliott, Tico, at 800-239-9547 or Glenn Lucas at 800-837-8062; email to Glenn@tvstma.org, or visit the chapter's website: www.tvstma.org.

South Texas Sports Turf Managers Association:

For information on the South Texas Chapter, or upcoming events, contact Tim Loesch at 210-207-3734 or TLoesch@alamodome.com.

Virginia Sports Turf Managers Association:

For information on the Virginia Chapter, or upcoming events, contact: Bob Studholme, Fairfax County Park Authority via e-mail: Robert.Studholme@FairfaxCounty.gov or at 703-324-8590.

Wisconsin Sports Turf Managers Association:

For more information on the Wisconsin Chapter, or other pending events, contact Chris Brindley at 715-346-3622 or cbrindle@uwsp.edu.

Chapters on the Grow:

South Carolina: Efforts are currently underway in South Carolina to form a Chapter of the Sports Turf Managers Association. The contact is Dr. Trent Hale, a Research and Extension Turfgrass Specialist in the Department of Horticulture for Clemson University He is located at the Pee Dee Research and Education Center in Florence. For more information contact Dr. Hale at 843-662-3526 or by email at tchale@clemson.edu or the forming chapter's page on the STMA website: www.sportsturfmanager.com.


New York: For information on the chapter forming in Central New York, contact Kevin Meredith, National Soccer Hall of Fame, at e-mail: Kevin@wpe.com or at 607-432-2953.

STM

KLAWOG®

A New Foundation for Sports™

- **Easy & Quick Installation**
- **Fast Durable Repairs**
- **The Professionals Product of Choice**



Without KLAWOG®

Under Your Feet, Your Mound and Batter's Box ARE NOT COMPLETE!

Discover The KLAWOG® Advantage Today!

Call **1-800-650-9322** for your nearest distributor.
www.klawog-klacon.com

Welcome New STMA Members

Robert M. Beller
Hillsborough County Parks & Rec.
Spring Hill, FL

William E. Fee
Carducci & Associates, Inc.
San Francisco, CA

David Hubinger
Hubinger Landscaping Corp.
Crown Point, IN

Locke Turf, Inc.
Tony Tredente
Mandeville, LA

David Smith
N. Jackson High School
Stevenson, AL

Josh Blackmore
Carmel Dad's Club
Carmel, IN

Graco, Inc.
Jon Knutson
Minneapolis, MN

Andrew J. Hutton
Student/Ohio State University
Medina, OH

Gino Marchetti
Fieldstone Golf Club
Boothwyn, PA

Ryan Thomas
Turfgrass America
Poston, AZ

Paul Boswell
Turfgrass America
Apollo Beach, FL

Patrick Harvey
Owen Community College
Temperance, MI

Barry Jameson
Taft Union High School
Taft, CA

Kevin McCubbin
Student/Iowa State University
Ames, IA

John Turnour
Baltimore Orioles/Camden Yards
Baltimore, MD

Country Green Turf
Jeff VanLierop
Olympia, WA

Robert Hickey
N. Colonie Central Schools
Latham, NY

Matt Lawrence
Pioneer Products
Great Neck, NY

Andy Ross
Turfgrass America
Castaic, CA

Warren Weldon
Plymouth Country Club
Kingston, MA

CONGRATULATIONS TO OUR 2 NEWEST CERTIFIED SPORTS FIELD MANAGERS!

Bob Benyo, CSFM; General Manager; Opti-Gro Contract Services

Amy J. Fouty, CSFM; Sports Turf Professional; University of Michigan

My professional football team was undefeated on grass from Turfgrass America.

As a coach and a father, not only my home team, but my team at home plays on grass from Turfgrass America.

Jeff Fisher
Head Coach
Nashville, Tennessee

Turfgrass America
Call today 1-888-NEW GRASS

Members on the Move!

Blake Hoerr, former Assistant Head Groundskeeper with the Baltimore Orioles, has taken the position of Sports Field & Turf Manager, Washington National Cathedral. You can reach Blake at 202/537-2392.

Matthew McQuaid, formerly with the City of Petosky, is now in the position of Senior Maintenance with the Peoria (AZ) Sports Complex. Matt can be reached at 623/412-4226.

George Ortiz, formerly with the Solano Stealheads Baseball Organization, is now with Field of Dreams Sports Turf Company. Give George a call at 530/383-1175.

John Ross, a former Graduate Student from Cal State/Fullerton, is employed as Drip Irrigation Sales Specialist for the RainBird Corporation. You can reach John at 714/926-4745.

Matt Williams, former Supervisor/Grounds with the Cincinnati Reds, is the new Director/Stadium Grounds for the Columbus Crew Stadium. Matt's new number is 614/447-4103.

Parker Wood, formerly in Marketing & Operations with Sand Channel Greens, Inc., is now Owner of Sports Turf Solutions. You can reach Parker at 831/484-2138.

If you, or someone you know, has changed positions, please let us know so we can help get the word out!

"With the multitude of financing alternatives presented to me by Toro, I can realize an increased return on assets, reduced repair and maintenance costs, and a lower debt load while maximizing the potential for off-balance sheet treatment concurrent with the retention of capital for alternative uses."

"Cool."



Toro Financing™. It appeals to both sides of your brain.

Monthly payments. Seasonal payments. Leasing. Financing to own. Whether it's irrigation systems or turf equipment, we have an option that's right for you. Contact your local distributor at 1-800-803-8676, ext.147. Or visit toro.com.



Count on it.

Professional Development: Maintaining Your Cool in Hot Situations

As a sports turf manager, and a human being, you will at times be in the center of hot situations. These may be related to such athletic field management issues as user groups demanding their field use "rights" in unsafe or field-destructive conditions. They may be related to threatening weather conditions, to player or spectator injury, to power outages, or equipment failures. They may be related to unfavorable and uninformed media coverage. They even may be related to the "politics" of your position, with different segments of the facility taking widely different viewpoints on policies or changes within the organizational or operational structure.

So, how do you, as a professional, keep your cool in these hot situations? Here are a few suggestions.

Listen: Take time to hear the concerns that need to

be expressed.

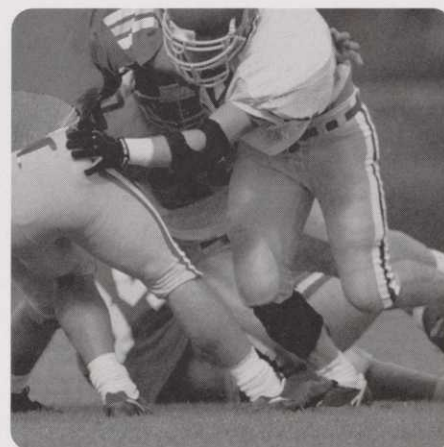
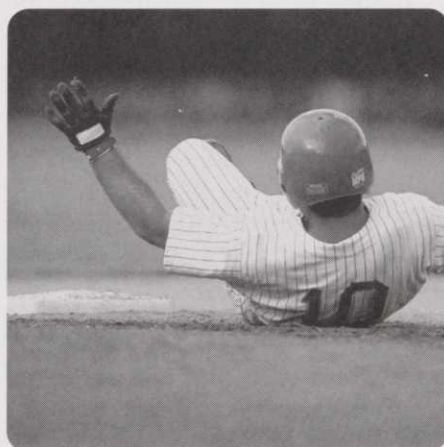
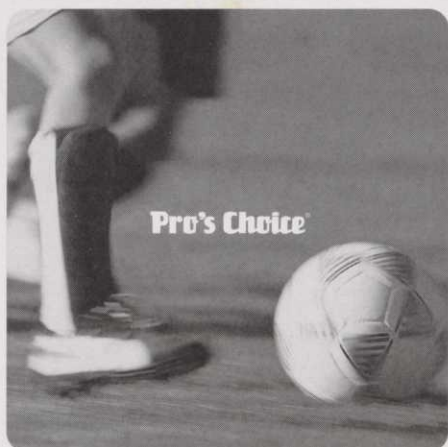
Think: Consider the ramifications: Don't act in haste or from your emotions. Examine all aspects of the situation and formulate your actions based on the facts of the situation.

Act: Remember - you are a professional - a representative of your facility and your profession. While you may disagree with the opinions expressed by others, they do have an equal right to their opinions. Do not belittle or in any way use negative expressions to attack their opinions, or to attack them personally. If you are the ultimate decision-maker in the situation, simply state that you appreciate their input, but the decision has been reached. If another group or individual is the ultimate decision maker, just note that you appreciate their input and are sure that it will taken into consideration.

STM

Contributions wanted! Grass Stain Productions is seeking photos of your crew and your fields - at work and at play - for the Pre-Awards presentation at the conference. Contact Steve LeGros at 717/534-3167 or e-mail: slegros@hersheypa.com, or Jeff Fowler at 814/437-7607, e-mail: jtf2@psu.edu, for more information and format preferences.

Pro's Choice[®] sports field products



Soilmaster[®] soil conditioners build strong turf to stand up to tough play.

Soilmaster soil conditioners are ideal for incorporating into aeration holes, to relieve compaction in the high traffic areas on soccer, football and baseball fields. Made from a unique montmorillonite clay, and fired for maximum hardness and stability, each granule quickly wicks water away from the playing surface and promotes drainage. The result - deep rooted, divot resistant turf that recovers more quickly from heavy play.



Call for information and samples of our full line of sports field products, including Rapid Dry[®] drying agent, Pro Mound[®] packing clay and baseball accessories.

(800)648-1166

www.proschoice1.com



California Teamin' in 2004

continued from page 1

10,000 seats were added for the Super Bowl. Qualcomm Stadium also hosted the 2003 Super Bowl.

One will see the stadium as it hosts BMX Dirt Track Races. Steve Wightman will discuss his role and responsibilities with these off-season stadium events.

Qualcomm website: www.sannet.gov/qualcomm

Petco Park

Host Luke Yoder, Director/Field & Landscape Maintenance

Opening in 2004, Petco Park will be spectacular in every way, combining the best sight lines in baseball with breathtaking views of San Diego. Architecturally magnificent, it will celebrate the sea, the sky, the natural beauty, cultural diversity and unique spirit of the region. Innovative design features will evoke the timeless traditions of baseball in an intimate setting, with state-of-the-art fan amenities to suit every taste and budget.

The natural stone and stucco exterior and lovely landscaping will make this the garden spot of baseball, with a relaxed yet dynamic atmosphere that reflects the San Diego lifestyle.

Petco Park will seat 46,000 - 20,000 fewer than Qualcomm Stadium. The total cost of the project is \$449.4 million. The ballpark itself will cost \$294.1 million and land/infrastructure costs are \$151.3 million.

Luke Yoder will lead the discussion and tours of this new facility.

Petco Website: www.padres.com

Balboa Park

Balboa Park, 1,400 acres nestled in the heart of the city, is home to 15 museums, multiple arts and culture associations, the world's largest outdoor pipe organ, the incredible San Diego Zoo, and stunning architectural and horticultural elements. Balboa Park's sports complex includes ball fields, tennis courts and even a velodrome. This stop will include an overview of the park, as well as the sports facilities.

Balboa Park Website:

www.ci.sandiego.ca.us/park-and-recreation



Seminar on Wheels Tour - Wednesday, January 21st Point Loma Nazarene University Athletic Complex Host Steven Riddle, Athletic Facilities Manager

This tour will include the Carroll B. Land Baseball Field that is titled "America's Most Scenic Ball Park." (Believe me, when you see it, you'll agree!)

Steven Riddle will guide us through the athletic facilities that he maintains for numerous sport venues for the 2,500 student body.



Hunter Industries, San Marcos, CA.

Host Torrie Magee

Hunter Industries has earned a reputation as "The Irrigation Innovators" and the company's knack for
continued on page 17

It's your turf - keep it safe...

FieldSaver™ Football Sideline Covers - only from CoverSports USA



FieldSaver™ Sideline Tarps can be personalized to your specifications

- Save your sidelines - real grass or artificial turf
- Heavy-duty construction stands up to the toughest football teams
- Durable polypropylene fiber lets air and water pass through
- 5 Stock sizes from 14' x 50' to 14' x 150'
- We will customize by size, school name and logo
- Full field rain covers also available

Protects and preserves your sidelines

COVER SPORTS USA

A Division of Humphry Manufacturing
Your All-American Advantage

5744 Woodland Ave., Phila., PA 19143
800.445.6680 Fax: 215.724.8706

www.coversports.biz
email: sales@coversports.biz

© 2003, CoverSports USA

Headquarters Report

by Steve Trusty, Executive Director

Since my last report to you that I wrote on July 25, the following has been going on at your STMA Headquarters:

Membership Management System

Work continues on the development and implementation of this major new process for handling all of STMA's membership data. The first phase should be up and running about the first of October. Other parts will be phased in over the next few months. We'll keep you posted. Watch for information on the website.

2002 Financial Report

The Auditors' Financial Report for the year ending December 31, 2002 for STMA and SAFE is now posted on the Members Only Section of the STMA Website. If you have any questions about any of the report, please do not hesitate contacting me.

Electronic Newsletter

A committee headed by Boyd Montgomery, CSFM, is working on the design and other details for the new E-newsletter that STMA will start publishing in 2004. If you have any thoughts or ideas on this, I'm sure that Boyd would appreciate hearing your comments. In the meantime, the current printed newsletter will be saved in a PDF file and posted on the website. You can now get it quicker than the mail can get it to you. Please continue to check the website for new information on a regular basis.

Bylaws Committee

The Bylaws Committee, under the direction of Chair - Ken Mrock, has finished their work on revising the STMA Bylaws and making recommendations for a Code of Ethics and Professional Conduct Guidelines. The next step in the process is to receive Board approval. This will happen by the October 26 - 27 Board Meeting. Watch your mail around that time for your copy of the proposed Bylaws and your ballot for voting. Remember, the membership has the final say on the bylaws. Copy will be sent to you for your review and vote. Your vote is important. Under the current bylaws, STMA can only accept mailed ballots, so be sure you vote and mail your ballot in by the required date. When you get a chance, thank Ken and his committee for all their hard work. Their names will be listed in the letter accompanying your ballot.

Conference Committee

HQ is busily working with the Conference Committee to finalize details for the San Diego Conference. Watch for full details shortly. The program and tours promise to be even better than the last. Be sure that you have January 21 - 25 marked on your calendar and the cost in your budget for 2004. Full Conference Registration for members received by December 5 is only \$325 and received after December 5, \$350. This includes all Educational Sessions, Trade Show,

three continental breakfasts, three lunches, three receptions (two of which provide enough for a full meal) and the Friday Awards Banquet. Golf, tours and the MLB Seminar are all optional events. The costs of attending these are extra.

Membership Committee

Your Membership Committee has come up with a tremendous idea to provide extra benefits to you if you help STMA grow. This is your organization and with your help it can continue to grow and reach your peers that need the same information that you receive from STMA. Look for the details elsewhere in this issue and see how many new members you can get for your association this next couple of months. As I write this, a new membership brochure is being finalized. Copies will be available from HQ about the same time as you receive this newsletter.

An apology where needed

Some of you (about 20%) received a copy of the last newsletter with a darker colored print than should be. This made the new logo appear darker than it really is. The lead pressman suffered a heart attack during the run of that issue and about 500 of the newsletters had to be reprinted. The person brought in to do the reprint didn't check the color resolution closely enough and that resulted in some of you receiving the darker copy. We sincerely apologize to you for that and to the Marketing Committee for causing their disappointment in the Newsletter intro of the new logo. By the way, the pressman has recovered very well and plans to be on the job to print this issue.

Until next time, may your fields look and perform the way YOU want them to.



SAFE Raffle & Live & Silent Auction Donations Sought

**Don't Be Left Out
Make your donations NOW for the
SAFE Raffle and Live & Silent Auctions
to be held at the
15th Annual Conference & Exhibition
January 21-25, 2005
San Diego, California
Items can be sent to
STMA Headquarters
Attn: Jaci Pettie**

**For more information, call Tom
Curran at 954/786-4138 or Jaci.**

California Teamin' in 2004

continued from page 15

Innovation is evident not only in their finished products, but throughout the manufacturing operation. Using a system known as "vertical integration" - where all steps of product creation, development and assembly are handled on-site - Hunter has been able to maximize their manufacturing output while maintaining total control of the entire production process.

As part of the factory tour, you'll see first-hand:

- how the engineering department uses the latest design tools to create new products and enhance existing ones
- how they create every mold for virtually every part of every product
- how their 2-story manufacturing center puts gravity to work and maximizes the efficiency of their production
- how computers start, run and stop all machinery, as well as compile information and analyze it through the latest software
- how Hunter generates their own electric power
- their state-of-the-art assembly equipment
- Hunter's test facilities (indoor and outdoor) that are unsurpassed in the industry

Westview High School

Host Michael Tarantino, Grounds & Operations Supervisor

Westview High School is one of several high school sites that Mike Tarantino manages in the Poway Unified School District. This new high school facility just opened in 2002 and includes 13 acres of athletic fields, including a football stadium with striped fieldturf and track.



San Diego State University

Host Ron Hostick



SDSU has several great sports venues to tour including:

- Tony Gwynn Stadium, Home of the SDSU Baseball Aztecs - a combination hybrid Bermuda turf field with artificial turf sideline areas.
- SDSU Sports Deck - a sand-based soccer game field with track and field built atop a parking deck.
- Fieldturf Practice Fields - Two natural turf fields recently converted to Fieldturf are primarily football and soccer practice fields, but also accommodate band practice, and a host of intramural games.
- New Women's Softball Field Stadium, scheduled for construction in 2003.

STM

**YOUR "ONE-STOP SOURCE"
FOR AMERICA'S LEADING
BASEBALL SURFACES & SUPPLIES**



THE PROFESSIONAL'S CHOICE
... SINCE 1922

USED BY OVER 100 PRO TEAMS,
OVER 600 COLLEGES, PLUS THOUSANDS
OF TOWNS & SCHOOLS WORLDWIDE.
SPECIAL MIXES FOR INFIELDS,
PITCHER'S MOUNDS & HOME PLATE AREAS.

**REGIONAL INFIELD MIXES
AND RED WARNING TRACKS
FOR EVERY STATE & CLIMATE!**

PLUS INFIELD CONDITIONERS
TO IMPROVE EXISTING INFIELDS:

IF TOO HARD AND POORLY DRAINING!

Pro's Choice®

THE REDDER, LESS DUSTY, MORE UNIFORM
INFIELD CONDITIONER & DRYING AGENT
"RED" OR "GREY" FOR INFIELDS
"GREEN" FOR TURF
FOR CONSISTENT INFIELD CUSHION
IN WET OR DRY WEATHER!

IF TOO SOFT & DUSTY!

STABILIZER®

FOR FIRM, YET RESILIENT, PLAYING SURFACES

TO QUICKLY DRY INFIELDS!

The Original & Most Absorbent is Now

NEW & IMPROVED GRANULAR

DIAMOND-DRY.



WHAT!
We Came 100 Miles
And You STILL Don't Use
DIAMOND
DRY!



OVER 200 OTHER INFIELD PRODUCTS!

Now in 6 Colors!

FENCEGUARD®
Protective Safety Covers
for Chain Link Fence

WALL PADDING • WINDSCREEN • RAIL PADDING
TAMPERS • DRAG MATS • RAKES
HOLLYWOOD® BASES • FIELD MARKING MACHINES
BATTING PRACTICE COVERS • RAIN COVERS
PERMA-MOUND™ PADS • MOUND BRICKS
SAFE "T" MATT™ BATTER'S BOX PADS
TYPAR® & TERRA-BOND® GEOTEXTILES
ON-DECK CIRCLES WITH TEAM LOGOS
PERMANENT FOUL LINES & MUCH MORE!

**FREE INSTRUCTIONAL BROCHURES
DISTRIBUTION CENTERS NATIONWIDE!**

800-247-BEAM

908-637-4191 / FAX 908-637-8421

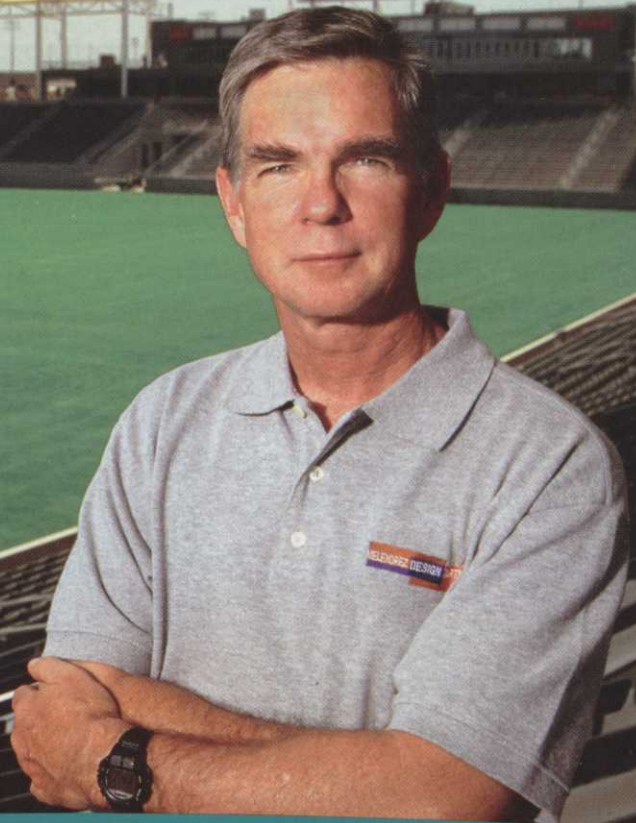
PARTAC PEAT CORPORATION
KELSEY PARK, GREAT MEADOWS, NJ 07838

"The best infield mix I've ever used."
GEORGE TOMA

When we reviewed all of the criteria for the turf at the new HOME DEPOT CENTER, Bull's-Eye Bermuda was the only turf that met all of our needs.

THE HOME DEPOT CENTER
Home of:

- Los Angeles Galaxy
- AEG Live
- U.S. Soccer Federation
- United States Tennis Association
- USA Cycling
- United States Track & Field
- San Diego Chargers
- Summer Training Camp



Let's Talk Turf.

- DEEP BLUE GREEN COLOR
- SEED HEADS
- RESISTS SCALPING
- NO SEED HEADS
- BETTER IN SHADE
- EXCELLENT WEAR TOLERANCE

Just ask the pros!



—Brian Mitchell

Principal-in-Charge
and Project Landscape Architect
Melendez Design Partners
HOME DEPOT CENTER
Carson, CA

WEST COAST
TURF

Life is Short. Sod it!

For details call 800/447-1840, or visit www.westcoastturf.com

New Member MANIA!

Get with the Program!

Dates: October 1, 2003 through December 31, 2003

Bonus for the new national STMA member - membership is in effect for the last quarter of 2003 through December 31, 2004

Chapter Challenge - increase new national membership the most - by number of new national members or by percentage of new national members - and reap the rewards.

Chapter members' new national members also will be credited to their respective chapters for the Chapter Challenge. Chapter credit will be assigned to the Chapter of the individual named on the referred by line unless otherwise specified.

To qualify for the individual rewards, the individual Top Recruiter rewards, and the Chapter Challenge rankings, all materials must be postmarked by December 31, 2003, and received by STMA Headquarters by January 7, 2004.

For the individual - professional member: To qualify, the individual's name **MUST** be listed on the "referred by" line of the membership application. For each new member the individual receives \$10 in referral bucks

With six new professional or commercial (Cat V or Va) members - free professional membership

With ten new professional or commercial (Cat V or Va) members - the above plus free 2004 Conference registration

For the individual - commercial member: To qualify, the individual's name **MUST** be listed on the referred by line of the membership application.

With six new professional or commercial (Cat V or Va) members - free professional membership (to award to a professional of your choice)

With six new commercial (Cat V) members - free commercial membership (Cat V or Va)

With ten new professional or commercial (Cat V or Va) members - the above plus free 2004 Conference registration (to use or award)

The dollar equivalency of the total memberships credited to the company for the trade show selection ranking.

Top Recruiter Rewards:

(10 or more new national members to qualify)

All recognized during Awards Presentations at 2004 Conference

For the top individual - Professional

- One complimentary 2005 Conference registration
- Plaque
- STMA Windshirt

For the top individual - Commercial

- One complimentary 2005 Conference registration
- Plaque
- STMA Windshirt

For the top individual - Student

Top Student - 10 or more new national memberships (for students only - can be student memberships) to qualify. Note: Only student members gain credit for referring student members.

- One complimentary 2004 Conference registration, and up to \$500 toward travel and lodging expenses to attend.
- Plaque
- STMA Windshirt

Chapter Challenge Rewards: One each for number and percentage

- One complimentary 2005 Conference registration to award
- Plaque
- Traveling Trophy - engraved or engraved tag

*So, Come on - Get with the Program!
Help your Association Grow - and Reward Yourself!*

If you have any questions, just call Headquarters!

STM



Supreme-GreenTM TURF COVER

The multi-purpose turf cover ideal for natural turf environments such as baseball, soccer and football fields.

BENEFITS

- accelerated seed germination • encourages root development • early spring green-up • delays dormancy in fall • winter protection: reduces frost and ice damage
- turf repairs • available in any size

Buy Direct From the Manufacturer!

Call 1-800-837-8961

www.coverttechfab.com • sales@coverttechfab.com

What's New?

Visit the completely new **covermaster.com**
The web's most comprehensive site
of protective sports surface covers.



Covers for football and soccer fields are readily available.



Our TARP MACHINE™ accessory lets you roll the cover on and off your field in minutes.



The TARPMATE™ plastic roller comes in 3 standard lengths and with safety end caps.

Why More Groundskeepers Recommend COVERMASTER® Rain Covers...

- Superior in strength and UV resistance
- Outstanding heat reflective properties
- Light weight - easy to handle
- Widest materials reduce number of seams
- Largest choice of weights and colors
- Backed by truly dependable warranties

COVERMASTER™ COVERMASTER COVERMASTER

MASTERS IN THE ART OF SPORTS SURFACE COVERS

FREE TARP MACHINE VIDEO!

Call, fax or e-mail for a free video, material samples and a brochure.

**'Very Good...
Highly Recommended...'**

Dunham Wright, Facilities Supv.
Northeast Louisiana Univ. Monroe, LA

CALL TOLL FREE 1-800-387-5808

www.covermaster.com

E-MAIL: info@covermaster.com

COVERMASTER INC., 100 WESTMORE DR. 11-D, REXDALE, ON, M9V 5C3 TEL 416-745-1811 FAX 416-742-6837

STMA Headquarters
1027 S. 3rd Street
Council Bluffs, IA 51503

PRSR STD
MAIL
U.S. POSTAGE PAID
OMAHA NE
PERMIT #705

Address Service Requested