

## ABC of Turf Culture

(Continued from page 18)

a chemist, or the State Agricultural college. Most state colleges test samples without charge. The samples should be carefully labelled and forwarded in good containers, together with a precise statement of what is wanted.

Very little can be done with water supplies containing lime, so far as removal of the objectionable lime carbonate is concerned. No more water should be used than is absolutely required by the turf. Larger amounts simply increases the quantity of lime carbonate in the soil, and makes the development of acidity more difficult.

**NOTICE TO READERS**—This is the fifth of this series of authoritative articles on turf culture and the chemistry of the soil. It is the most up-to-date and complete information published on this subject. Order your back numbers now before they are all gone. Price 25c each.

THE NATIONAL GREENKEEPER  
407 Caxton Building, Cleveland, Ohio.

### Grass Seed of Known Quality

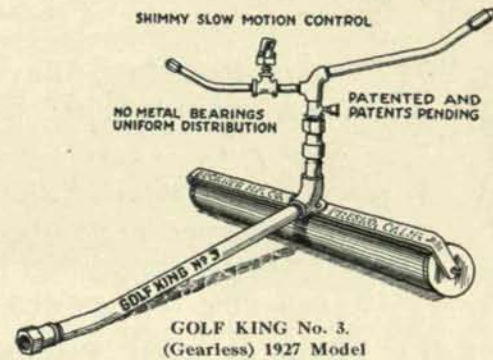
TESTED for PURITY and GERMINATION

Prices on Application

*Stump & Walter Co*

30-32 Barclay St.,  
New York

## THE GOLF KING SPRINKLERS Standard Golf Course Equipment



This is the last word in golf course sprinklers. Guaranteed by the LARGEST AND OLDEST EXCLUSIVE SPRINKLER FACTORY. The pioneers in golf course irrigation, slow motion sprinklers and originators of the HOSELESS SYSTEM of Golf Course watering. Inventors of the AUTOMATIC Soluble fertilizer distributor for use with sprinklers. We can cut your irrigating cost 50%.

GOLF KING No. 3 will cover greater area more uniformly on the same pressure than any other sprinkler ever made. Nothing to wear out or get out of order.

GOLF KING SPRINKLERS have been adopted by 90% of the clubs in the West and hundreds in the East. Write for literature. Representative wanted in each district.

**BUCKNER MANUFACTURING CO.,**  
Fresno, California

## Classified Advertisements

Golf Club Officials who wish to secure greenkeepers, assistant greenkeepers and golf course mechanics, will save time and money by writing our Employment Bureau at 407 Caxton Building Cleveland, Ohio.

Advertisements under this heading \$1.00 per 20 words, 4 cents per additional word.

This column is operated in connection with the Employment Bureau of the National Association of Greenkeepers of America.

### Classified Employment

GREENKEEPER with 25 years' experience wants good position. Box 152, this magazine.

GREENKEEPER desires position. Exceptional experience construction and maintenance. Ohio preferred. Box 153, this magazine.

POSITION wanted as course Superintendent, Swiss-American. Have 17 years experience in constructing and upkeep of Golf Courses, also worked 5 years Potanich in Berlin, Ger., and am A-1 Swiss gardener. Have laid out many Golf courses. Wish to change position. Can give the best of references. Address Box 160, National Greenkeeper.

### NOTICE

Greenkeepers who desire to secure positions through the Association Employment Bureau should submit with their applications an account of their experience, proper references and approximate amount of salary requested.

The Classified Advertisement column of THE NATIONAL GREENKEEPER offers a suitable medium through which applicants for positions as greenkeepers, assistant greenkeepers or golf course mechanics may get in direct touch with opportunity.

**A LIMITED NUMBER OF BACK COPIES OF THE  
NATIONAL GREENKEEPER  
ARE AVAILABLE**

*The January, February, March and April numbers contain important articles, among them:*

- The A B C of Turf Culture, by *O. J. Noer*
- Month by Month With the Trees, by *C. M. Scherer*
- The Permanent Beauty of Concrete, by *James E. Foster*
- What Golf Rules Affect the Greenkeeper, by *Robert E. Power*
- Following Through with a Grass Seed, by *John Morley*

**KEEP YOUR FILE OF THE NATIONAL GREENKEEPER COMPLETE**

*Price 25c per copy*

**407 Caxton Building**

- - -

**Cleveland, Ohio**

*New Courses From Old Pastures*

*(Continued from page 32)*

being cleared of vegetation were extremely productive as virgin soils. Clearing deprived these soils of proper organic matter for future decay and further impoverished them by facilitating a wash of practically all organic matter to the lower valleys. These valleys became dark in color, porous in texture and of the greatest possible fertility largely at the expense of the higher clay soils. These clay soils, unless scientifically replenished by the direct application of organic matter or the decayed vege-

tation resulting from the rotation of proper crops, rarely ever recover but a trace of their former fertility.

Because of improper original greens construction it has become necessary for a great number of our older courses to rebuild their greens through a series of top dressings with such mixtures of earth and organic matter as will more nearly imitate the best in modern greens construction. This is a slow and expensive process but has proven the only means of correcting an unfortunate error in the original work. The golf organizations which, in their original construction work properly cared for the organic content of their soils, were very wise, and many no doubt, acted more wisely than they knew.

***If You Are Not a Member***

**Please Sign the Subscription Blank Below and Return With Your Check**

THE NATIONAL GREENKEEPER,  
407 Caxton Building,  
Cleveland, Ohio

Date.....1927

Please enter my name as a subscriber to THE NATIONAL GREENKEEPER for one year, for which my remittance for \$3 is enclosed.

Name.....

Mail To.....

Name of Club.....

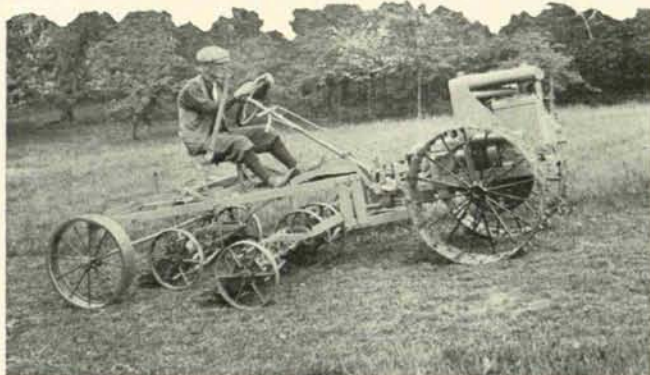
Club Address.....

Please check the following form for our information

I hold the following position in my club:

- Greenkeeper
- Chairman Green Committee
- Professional
- Club Manager
- President
- Secretary

# LOW COST POWER! For Every Job on the Course



## CENTAUR TRACTOR

For every job,—on any course, nine or eighteen holes—for mowing fairways, cutting the rough, hauling, plowing, seeding, leveling, ditching, pumping—every job that requires power, the Centaur has proven itself the ideal, economical power unit on scores of courses.

Centaur's powerful motor delivers ample power for the steep grades and tough jobs—yet *this tractor costs only a few cents an hour to operate!*

Light in weight, the Centaur can be used on the fairways when the ground is soft, without crushing turf, and in dry spells as well without damage. It is flexible and compact, easy to back and turn, works closely around bunkers, etc., and gets into the difficult places that usually require hand trimming.

For mowing the fairways, there are no extras to buy—Centaur's Universal Sulky uses any make of mower, Roseman, Pennsylvania, Ideal and all others—any of them attached in a few moments.

**To Club Officials:** Centaur's low first cost makes it easy to buy. Low operating cost makes it economical to use. Write us today for all the facts about the Centaur.

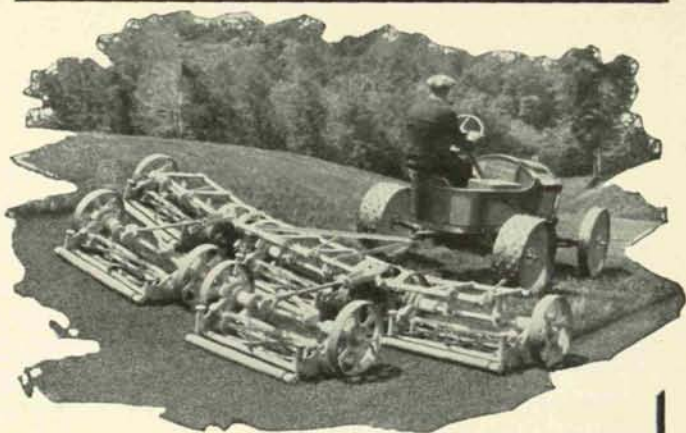
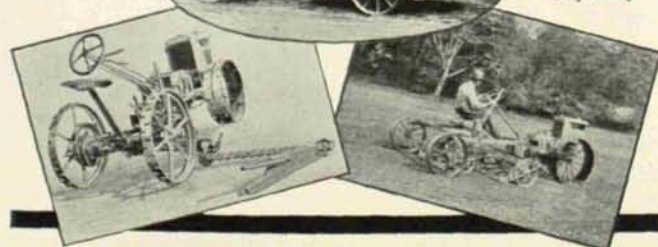
**THE CENTRAL TRACTOR COMPANY**  
201 Central Avenue      Greenwich, Ohio

*Below:  
Centaur with  
field mower  
for cutting the  
rough.*



*At Left:  
Centaur with  
dump cart for  
haulage.*

*Below:  
At work on  
the fairway.*



### Completely Flexible

Because the PENNSYLVANIA Super Fairway Quint was designed only after a practical study of the Greenkeeper's mowing problems, it meets all the requirements of *flexibility* as well as those of speed and efficiency.

For instance, a unique, positive lifting device, easily operated by one man, permits the raising of the two outboard units on the Quint so that it may enter narrow spaces and cross bridges. This useful feature also reduces to a minimum the storage space required by the Quint when not in use.

Write today for big new catalog giving full details of the Super Fairway, the Super Roller Greens Mower and all the other PENNSYLVANIA Mowers for Golf Courses.

**PENNSYLVANIA LAWN MOWER WORKS**  
1645 North 23rd St.      Philadelphia, Pa.

#### TEN SUPER FAIRWAY FACTS

1. Ingenious swivel attachment permits each mower to follow exactly the contour of the ground it covers.
2. Every moving part roller bearing—even the ground rollers.
3. Frame supported on two separate ground wheels.
4. Alemite lubrication.
5. All knives of crucible tool steel, oil hardened and water tempered.
6. All bearings and gears in dirt-proof, oil-retaining housings.
7. Heat treated and hardened cut steel gears.
8. Removing two bolts changes the Quint to a Trio.
9. May be used to cut the rough by raising its units.
10. Each mower may be raised separately. Automatic clutch idles or engages cutting cylinders as they are raised or lowered.

## PENNSYLVANIA QUALITY LAWN MOWERS



The Super Roller Greens Mower has been still further improved for 1927.