

# The Golf Show Exhibits

Complete description of new equipment and supplies which will be exhibited at the 6th Annual Greenkeepers' Golf Show at New York City, January 19-22

## John H. Graham & Co., Inc. New York City

John H. Graham & Co., Inc., 113 Chamber Street, New York City, general Sales Agents for Wilder-Strong Company, Monroe, Mich., makers of Spike Disc Lawn and Green Cultivators, and Dunham Water-Weight Lawn Rollers, will display in space 42 at the Annual National Greenkeepers' Golf Show, samples of the equipment they are marketing.



GRAHAM SPIKE DISC CULTIVATOR

Spike Disc Cultivators which were offered for the first time last season met with instant response from greenkeepers who have become firmly convinced of the necessity for turf aeration. The hand machine illustrated herewith is designed for use on putting greens, and has proven particularly useful not only for turf aeration but also for opening up the soil, thus aiding the retention of moisture, seeds and fertilizer. This hand model comes with either one handle or two handles, the latter for easier operation.

Spike Discs are offered also in two larger models for use behind a tractor and have proven to be of outstanding merit for the correction of turf troubles especially during the warm summer months. The relatively thin teeth of the Spike Disc while opening up the soil do not leave unsightly apertures nor do they harden the surrounding surface as do square or round spikes.

## The Exhibitors and Where to Find Them

Exhibitor	Space No.
Toro Manufacturing Company	1
Arthur D. Peterson	2-B
Buckner Manufacturing Company	2-B
Royer Foundry & Machine Co.	2-B
Hardie Manufacturing Company	2-B
J. M. McCullough's Sons Company	2-B
Pennsylvania Lawn Mower Company	2-C
Worthington Mower Company	3
Lyman Carrier Products	6
Campbell Irrigation Company	6
Peter Henderson & Company	14
Nitrate Agencies Company	16
American Cyanamid Sales Company	17
Atkins & Durbrow, Inc.	18
Economy Irrigation Company	19
Goulard & Olena, Inc.	20
E. G. Staude Mak-A-Tractor Co.	24
Fate-Root-Heath Company	26
C. B. Dolge Company	27
O. M. Scott & Sons Company	28
Stumpp & Walter Company, Inc.	29 and 30
Milwaukee Sewerage Commission	31
Ideal Power Lawn Mower Company	32
L. R. Nelson Mfg. Company	34
Swift & Company	35
Jacobsen Mfg. Company	37
Bayer-Semesan Company	38
Dayton Irrigation System	39
Mallinckrodt Chemical Works	40
Arthur D. Peterson, Inc. (H. J. English)	41
John H. Graham & Co., Inc.	42
Fertil Soil Company	43
Standard Manufacturing Company	B
Dow Chemical Company	C
Hyper-Humus Company	D
Adalink Chemical Company	E

Dunham Water-Weight Rollers are supplied in a wide variety of hand models for use on golf greens, tennis courts, etc., and there are also three large models for use on fairways. The

absolute need for rollers during the spring months especially, is well understood. Only by rolling are frost-raised surfaces leveled and young, tender grass roots reimbedded.

## Toro Manufacturing Co. Minneapolis, Minn.

For the Annual Convention and Golf Show to be held in New York, Toro will have a comprehensive and interesting exhibit.

The major item will be the new Master Seven Fairway Mowing outfit which is radically different from anything that has been shown up to this time. In the Master series the frames are directly connected to the chassis of the tractor by means of pinned sleeves.

The feature accomplished is a greatly shortened wheel base which means a greater degree of flexibility. In trial service throughout the past year the Master Seven has cut standard yardage golf course in as low as eight hours.

In addition the company will have two new types of putting green sprinklers—a rotary and revolving arm both representing the most modern types of sprinklers. Also the new "Sod-Kut" roller type hand operated sod cutter, which has a capacity of 15,000 feet a day.

Those in attendance will include J. S. Clapper, President; K. E. Goit, Sales Manager; M. R. McLaren, Service Manager; and all Toro distributors of the East and Middle West.

## Lyman Carrier Products Granger, Ind.

Once again the Annual National Greenkeepers' Convention is at hand and Lyman Carrier Products is very happy indeed, to be able to exhibit the specialty line of Cocoos Creeping Bent seed, Lecco, the complete grass food and Washington Creeping Bent stolens and sod.

Cocoos Bent is recognized by leading golf clubs as the last word in fine turf. It is a fine, upright growth, having no grain or nap as commonly found in stolon turf. This characteristic naturally reduces the amount of topdressing and a putting surface can be maintained much easier and more economically as compared to stolon plantings.

Cocoos is a true creeping bent and sod may be produced either by seeding or vegetative planting but the seeding method is much easier,

quicker and cheaper. Cocoos has proven satisfactory in Canadian heavy snows, Colorado's snowless extreme cold, California's and Oklahoma's heat. In local Oregon growth it endures periods of drouth and rains. A very outstanding and reliable seed.

While serving twenty years with

the U. S. Government in the Department of Agriculture, Lyman Carrier was continually looking and searching for a complete grass diet that would fulfill all the requirements of turf needed for quick growing, long lasting and complete food. The result is Lecco, the complete grass food.

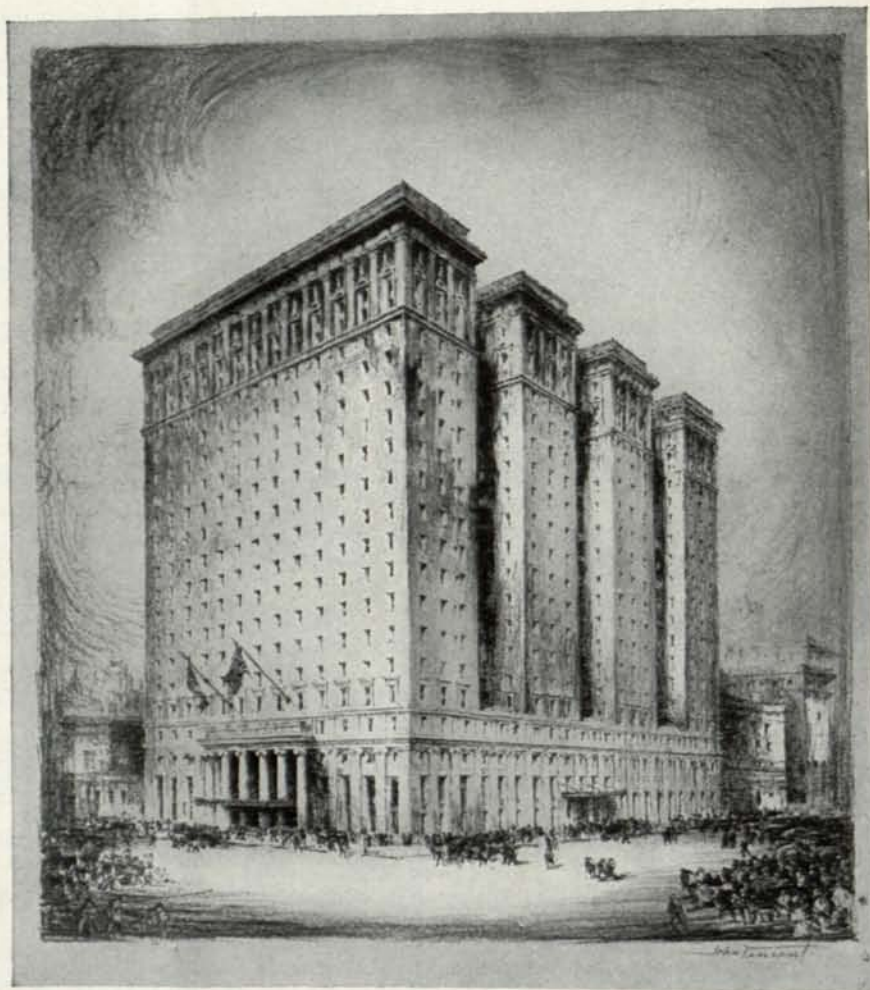
(Continued on page 24)

# Convention Headquarters

of the

## National Association of Greenkeepers of America

January 19th « » 22nd, 1932



HOTEL PENNSYLVANIA  
NEW YORK

STATLER OPERATED

## Lyman Carrier Products

(Continued from page 20)

Lecco completely feeds every department necessary to produce turf, namely, soil system, root, stalk, stem and leaf blade. The use of Lecco completely blends the fertilized area into one beautiful shade and growth of turf. Lecco is an acid food which makes it especially adaptable to the bent family. Leading clubs have brought a scraggly fairway growth to near perfection by the use of Lecco.

The use of Lecco with a sandy loam topsoil that will not cake or bake for surfacing will eliminate the use of the compost pile and keep your greens free from diseases that are directly traced to the infested compost pile.

Although Cocoos Bent seed is favored over the Washington stolons by many, this latter type of planting and sodding is still very popular. Lyman Carrier Products has a goodly supply of either stolons or sod in putting green length and offers prompt delivery at reasonable prices. They will appreciate early orders for this coming season.

## The Worthington Mower Co. Stroudsburg, Pa.

The Worthington Mower Company's exhibit will consist of special models of their machinery that embody important improvements.

Much thought has been given to increasing the efficiency of their mowing equipment.

The 1932 Scout Overgreen power putting green mower has undergone some slight but desirable improvements. The makers state that when the work of green cutting is divided between three units of a Worthington gang, as it is divided in the Overgreen, the life of each unit is prolonged to three times that of any single mower unit of the same size, either hand or power driven, doing the same amount of work.

Its over-all cutting width of 44 inches permits an average green of 6,000 square feet to be cut in less than ten minutes, whereas hand operation with a single unit requires forty-five minutes for cutting this area. The operator walks only one-third the distance. The very large demand for this machine is a decided indication of its increasing importance to golf courses for the rapid cutting and economical maintenance of its greens.

The Worthington "Multigang" of seven units, which cuts a swath sixteen feet wide when drawn by a Worthington lawn tractor, will completely finish the mowing of the eighteen fairways in less than five hours actual cutting time. The patented hinged frame permits this machine to be converted at will into a five unit gang, or a three unit one. They claim no machine has ever been perfected for the fairway that can approach the amazing efficiency of

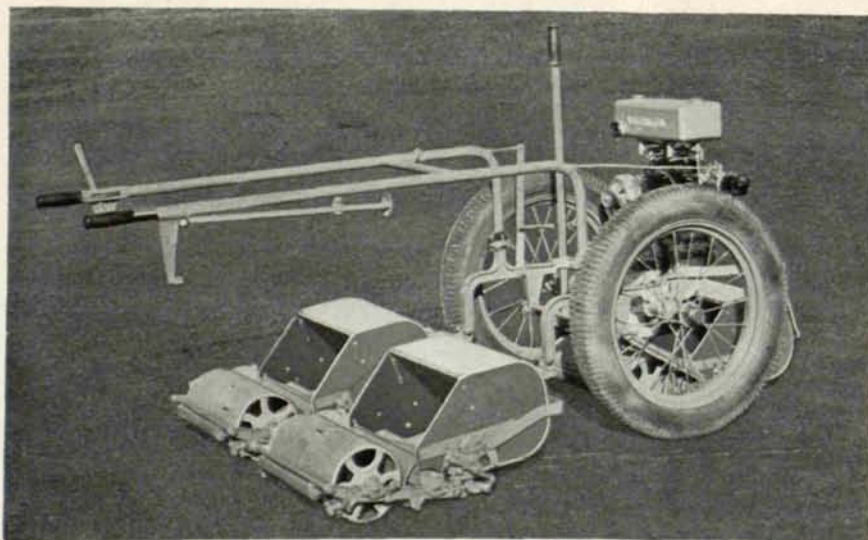
these machines working together in perfect formation.

Because of the remarkable simplicity and excellence of their design the Worthington cutting units, whether for fairway or putting green mowing, operate with the least draft resistance. They are all equipped with the patented bed knife adjustment which is not only positive in its action but the simplest in operation of any on the market.

A very little investigation of the results accomplished by this "Overgreen" and "Multigang" on some of the foremost courses of the country, will convince Chairmen of Green committees and greenkeepers that there has been inaugurated what might be termed a new era in the subject of golf course mowing and a new conception of the cost of golf course maintenance. It has changed the relation of this mowing item from being in many cases the most expensive one in the usual golf course budget to one of comparative moderate expense. The maintenance standard may thus be brought to the highest point of excellence with a remarkable decrease in the fairway and greens mowing costs.

The Worthington "Scout" hand mower in general design conforms to the well-known standard hand mower class, but possesses patented details of construction which increase its effectiveness and performance beyond anything that has heretofore been attained. The height of cut is adjusted by means of a new device (patent pending) of the simplest construction which fixes the height through the use of the fingers alone, without recourse to any tools. This system of adjustment is a feature which usually accompanies the setting of the cutting height. In practice, the "Scout" mower pushes with unexcelled ease. It is very light but strongly constructed and cuts a swath of incomparable smoothness over any kind of turf that is to be met with in this service.

We have been advised that many new uses have been developed for the Overgreen tractor which it is claimed will be of particular interest to greenkeepers. Some of these will be on exhibition at their booth.



NEW WORTHINGTON SCOUT OVERGREEN POWER PUTTING GREEN MOWER

## Penna. Lawn Mower Works Primos, Delaware Co., Pa.

For the coming season, Pennsylvania is introducing two new Fairway models, each using the now well-known Pennsylvania unit of all *malleable unbreakable construction*, fitted with wide-blade, six-knife reels and double-edge bottom knives, Timken reel bearings and other refinements.

The first model is a new Giant Quint using 36-inch units. The total cut is 14½ feet wide, which is only slightly less than the width of cut with a seven-unit gang using 30-inch units, and costs about \$200 less.

The advantage of this model is in the greater ease of control and decidedly lower cost of purchase and maintenance, doing away with numerous difficulties encountered with a seven-unit gang, such as crossing bridges and storing in buildings, as well as fewer general repairs.

The second new model is a nine-unit gang as illustrated. We believe this is the largest grass cutter ever manufactured. The illustration shows the usual 30-inch units in position, and with these, the width of cut is 21½ feet. If 36-inch units are used, the width of cut is 26 feet.

These outfits are both as easy of

control as a standard Pennsylvania Quint, and the nine-unit gang can be converted into a seven or five-unit gang by easily removing the end units of one or both rows. Another feature of value is that standard Pennsylvania frames can be coupled together, so that any present user of Pennsylvania Fairways can purchase the necessary parts to build any type of frame needed. Again, if a user has a nine-unit frame, and for any reason wants to separate it into a Quint or Trio, it can easily be done in a short time.

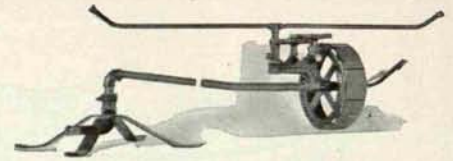
We believe there are no other outfits on the market today which offer the wide combination of Fairway models offered by Pennsylvania.

The Pennsylvania Greens Mower is made for this season with an eight-blade reel as standard, and produces a correspondingly finer cut than the earlier model.

### Economy Irrigation Co. Seattle, Wash.

This company will have on exhibition a sample of every machine they make.

"In addition to those machines illustrated in our catalogue," they say, "we shall have one of the newest models of our Double Gear Travel-

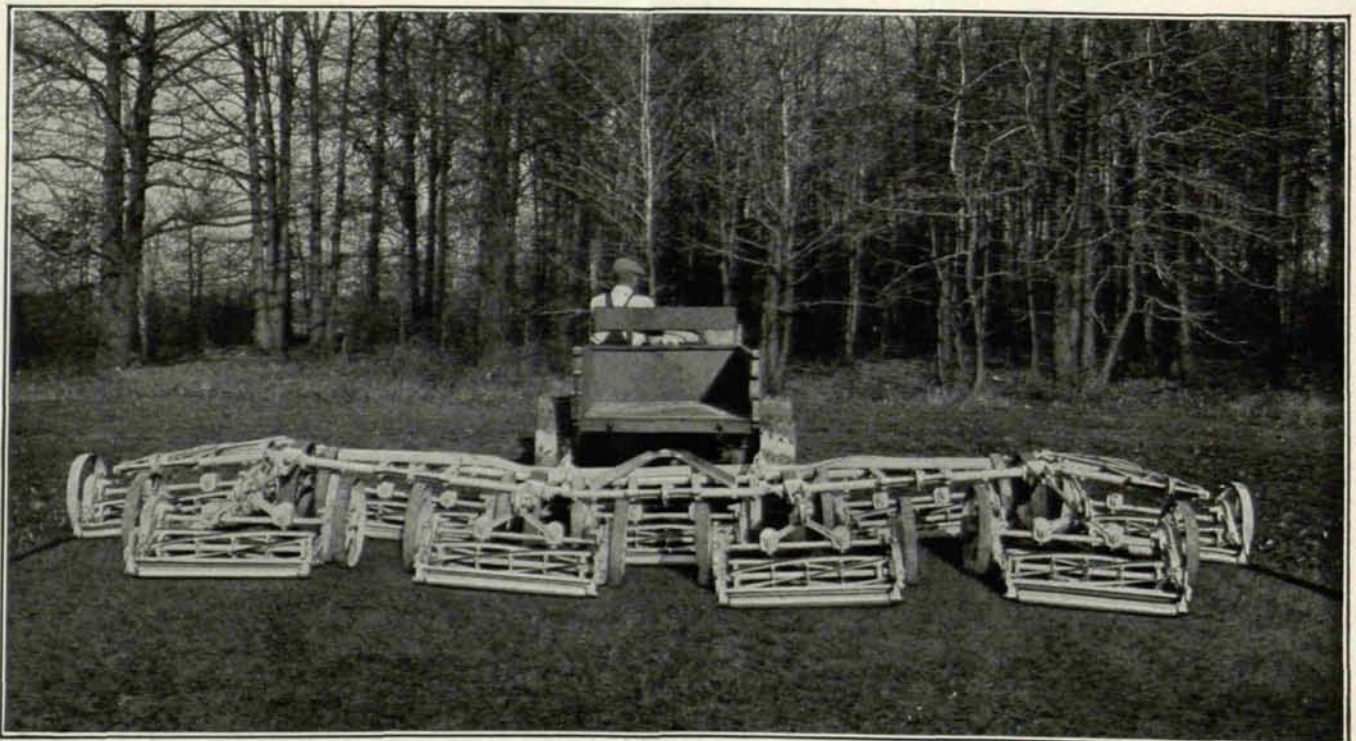


ECONOMY DOUBLE GEAR SPRINKLER

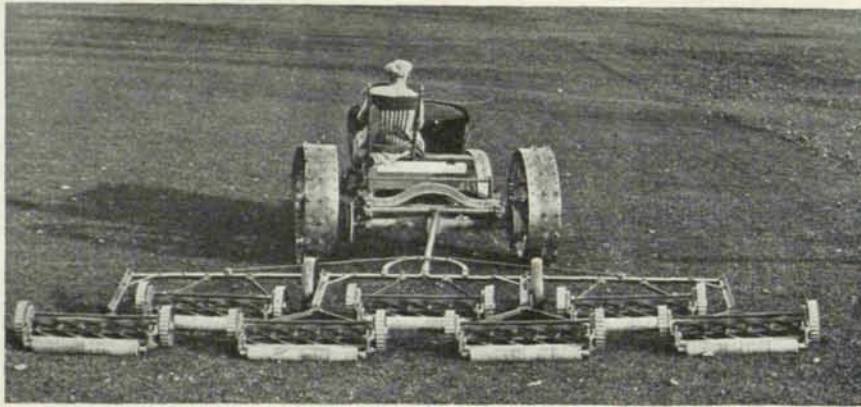
ler. This traveller is modelled from the pattern of our present Single Gear Traveller. In it we have eliminated the use of any ground head or packed head feature, thus saving wear and tear and replacements, which in our older type of Double Gear Traveller, were a little expensive.

"This Double Gear model will of course have much more power in 'travelling' than our Single Gear has, consequently, no matter what size hose is used the machine will easily travel over it thus completing the revolution of the travelling head with its twenty-foot radius pipe around the base.

"Operating on about fifty pounds pressure, there is no machine made which will give so large an area of coverage. This applies of course to any of our travelling machines. Whatever coverage is possible on the ordinary sprinkler, our travelling machines will cover just forty feet further in diameter."



NEW PENNSYLVANIA NINE-UNIT GANG FAIRWAY MOWER



NEW IDEAL SEVEN-GANG FAIRWAY MOWER. IT WEIGHS ONLY 1063 LBS.

### Ideal Power Lawn Mower Company Lansing, Michigan

While the Ideal Power Lawn Mower Co. expects to have several new items to display at the New York Golf Show, a feature of the Ideal exhibit will be their new type Fairway mower. A special feature of this new mower is that it can be quickly and easily converted by one man from a three gang to a five gang, to a seven gang, with remarkable ease. This is due to the fact that the mower has an entirely different type of frame construction, is lighter, and as a consequence such changes are easy to make.

It is claimed by the manufacturer that these new type gangs are lighter in weight and require less draw bar pull for operation than any mower of equal capacity and quality heretofore placed on the market.

Particular emphasis is laid on the fact that the seven-gang mower which cuts a swath of sixteen feet weighs only 1063 pounds complete with frame and units, and for operation on level ground cutting heavy stand of grass shows an actual draw bar pull of only 340 pounds. The cutting unit used with the new frames is perfectly balanced for operation over either level or rather rough fairways.

The frame itself, which is light in its construction, yet well braced to withstand all strain, is carried on two wide-faced wheels so that there is no weight of the frame resting on the cutting units. Pull arms extending from the frame back to the cutting unit side frames are attached by special lug at a point slightly below the

wheel center so that the cutting units are held right to their work even in heavy cutting.

The cutting units that will be provided with these new fairway frames will have 7-inch, 7-blade reels with knives of special heavy steel and the reels geared to operate at a speed that gives an exceptionally fine, smooth job of cutting and will do perfect work even on dense creeping bent turf.

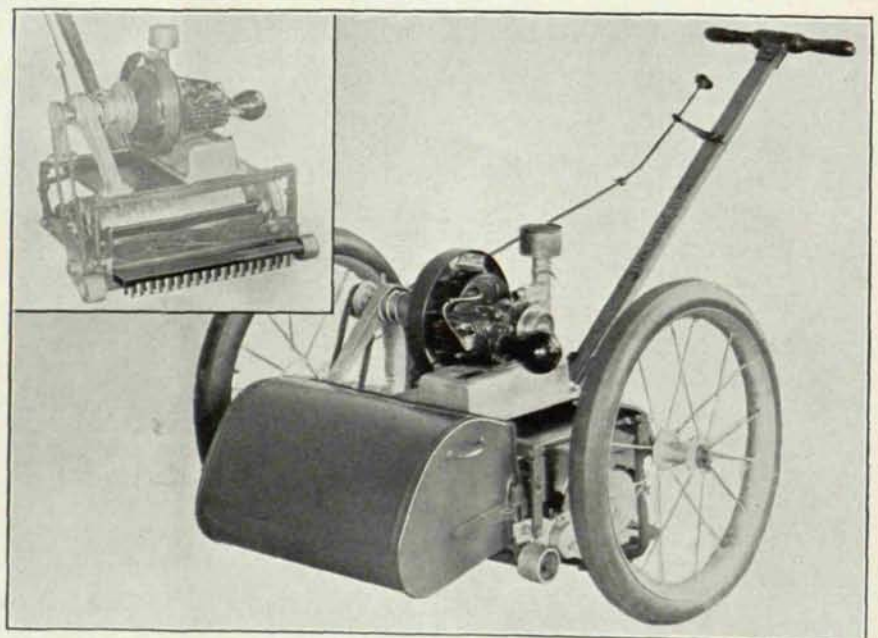
The five-gang Fairway mower of this new type cuts a swath of 11½ feet, weighs only 773 pounds, and the draw bar pull is only 250 pounds. The new three-gang outfit which cuts a seven-foot swath weighs only 485 pounds, and the draw bar pull is

only 160 pounds. This new frame hook-up is to be offered by Ideal in 1932 in addition to their standard frame that has been on the market for nearly ten years, and the new cutting units built for 1932 will be constructed so that they can be used in connection with either type of frame.

In addition to the new fairway equipment on display, there will be the Ideal Power Putting Green Mower which was shown for the first time last year. The Power Putting Green Mower as offered for 1932 embodies a number of refinements including a new and easily operated pneumatic rubber tire transport cart—a power driven carrier available at slight extra cost—and an entirely new type Greens Brush attachment.

Another new item to be displayed is a new Running-in Stand for back grinding cutting units, the stand being supplied complete with electric motor and will be sold at a price so reasonable that any club operating a five or seven-gang mower cannot afford to be without this convenient machine.

Other machines on display will be the Ideal Hand Putting Green mower, as well as certain size power mowers adapted to golf course upkeep.



NEW PNEUMATIC RUBBER TIRE TRANSPORT CART TO BE STANDARD EQUIPMENT ON THE IDEAL POWER GREENS MOWER FOR 1932

*Small illustration of mower with grass catcher removed shows new type greens brush attachment.*

## E. G. Staude Mak-a-Tractor Co., St. Paul, Minn.

The new 1932 model of the Staude General Utility Golf Course Tractor will be shown for the first time at the Sixth Annual Greenkeepers' Golf Show at the Hotel Pennsylvania, New York City, from January 19th to 22nd.

Although the new Staude has several new features, the most outstanding one is the new Proven Silent Drive. The mechanism of this drive is so quiet in operation that it does not disturb the players on the course.

The wheels of the new model are so constructed that they may be easily and quickly removed and pneumatic tired Ford truck wheels put on. This allows the Staude to be driven on paved country roads and city streets.

This model is equipped with an air cleaner breather cap on the oil intake and a new and improved air-cleaner on the carburetor, giving fullest possible protection to the motor. It also has self-starter, generator, battery and muffler.

The Staude is light, speedy, powerful and noiseless. It easily pulls from five to seven 30-inch cutting units and rollers weighing up to six tons. It will also pull sprayers, plows and discs and is equipped with all steel dump body for hauling dirt and sod. An adjustable hitch is provided so that any make or style of implements such as mowers, sprayers and rollers may be attached quickly.

The Staude is light in weight and has plenty of good power and speed. It has a very short turning radius, and is easy to operate—anyone can do it. The steel tractor wheels run on Timken Roller Bearings and ow-

ing to their wide surface and rolled edge rim, do not tear up or damage the turf. Repairs are seldom required as the design of the Staude is correct and the best of materials are used throughout. Extremely economical in operation.

The Staude has been manufactured continuously and sold on a money-back guarantee since 1916. It is sold and can be serviced by any Ford dealer. The E. G. Staude Mak-a-Tractor Company, St. Paul, Minnesota, will gladly furnish additional information to anyone interested.

## Stumpp & Walter Co., New York City]

This company was with us at Detroit, Buffalo, Louisville and Columbus. Wherever we go, their exhibit is always interesting and decorative. This time we hold the Convention in Stumpp & Walter Co.'s own home town, New York, and they have taken larger space than usual in which they will welcome their many friends.

The keynote of their display is an important one to the greenkeeper; seeds of exceptional quality, not only of high purity and high germination, as observed in laboratory tests, but seeds with a quality that goes deeper than that shown by analysts' reports. Freedom from turf weeds, for example; many samples purer than 99 per cent and containing none of those weeds which are troublesome to the greenkeeper—no mouse-ear, plantain or dandelion.

And here's an interesting fact about laboratory reports; some of our worst weeds are not officially

classified as "noxious." Mouse-ear is a case in point. Grass seed may be certified as containing no noxious weeds, and yet include hundreds of mouse-ear seeds in a pound. This is where seeds from a reliable source may be better than those from another, although an analysts report of the purity and germination of the two samples would not indicate any superiority. And by reliable source we mean a seedsman who knows his seeds and realizes the importance of eliminating those weeds which are serious to the greenkeeper.

Then there are other questions about seeds which analysts' reports will only partly answer; for example, where were they grown and by whom? Are they entirely new, not blended, old with new? Is the seed good looking? An experienced greenkeeper will see many differences in the appearance of seed samples.

Finally, is the seed *heavy*? We are inquisitive as to the weight of a bushel of Blue Grass, and rightly so. A bushel of seed weighing twenty pounds is superior to seed weighing seventeen pounds; a twenty-four-pound bushel is better seed than a twenty-pound bushel, and a thirty-pound bushel of Blue Grass is exceptionally good.

Now, to compare the weight per bushel is a practical way of talking about specific gravity, and it is obviously just as important that all the greenkeeper's seeds be of high specific gravity, that is, his Red Top, Bent and Fescue should be heavy seed, as well as his Blue Grass.

Among the grasses to be shown by the Stumpp & Walter Co. is their new Bent, "Triple A." This is a stoloniferous strain of Colonial Bent which is so narrow in the leaf that it produces a turf nearly as fine as Velvet Bent, and it grows at a lower temperature than most other grasses, causing it to be green and growing earlier in spring and later in autumn than other strains of bent.

They will show the latest in greenkeeper's equipment; mowers, sprinklers, rollers and the like, as well as flags, poles and hole cutters.

It is gratifying to see one of the old line houses sticking by the Association so loyally. The Stumpp & Walter Co. began their association with golf at about the time that golf first



STAUDE GENERAL UTILITY GOLF COURSE TRACTOR

This will be shown for the first time at the National Greenkeeper's Show in New York.

took its hold on the American public, back in the early years of the century; true enough is the expression in one of the editions of their helpful "Golf Turf," which emphasized the fact that Stump & Walter merchandise has been in use on golf courses since the days of the old gutty ball. Thirty years ago the first was among the first to import Fescue and Bent seed from abroad, and they are large annual importers of these grasses today.

Visitors to New York at Convention time will find the Stump & Walter Co. on the move. They have just completed a new headquarters, and they are now in the process of transferring their stocks to the modern building at the corner of Warren and Church Streets, New York. These people use extensive warehouse accommodation, as they control directly very large stocks of grass seeds, as well as field seeds, vegetables and flowers.

### Goulard & Olena, Inc. New York City

This company are specialists in fertilizers, insecticides and deodorants. In the fertilizer line they have many products which are adaptable to the numerous problems of turf culture under all conditions. They have a lawn and garden fertilizer of their own composition, also ground bone meal and sheep manure.

Their products in the insecticide field not only include exterminators of insects in the garden, but also in the household.

In their exhibit in New York they will particularly feature fertilizer for the greens and fairways, brown patch formula, Anti-Japanese fertilizer, dry and liquid worm eradicator, concrete and brick white dressing, insecticides, arsenate of lead powder, and coated arsenate of lead paste.

Their Mr. James Henry Howard Jr., will be in attendance at the booth assisted by Messrs. Clarke, Lowenthal and DeGroot and their New England representative Mr. Charboneau.

### Nitrate Agencies Co. New York City

The famous Naco Caddy will be the central figure in the Nitrate Agencies Company's exhibit in Booth No. 16.

The display will include samples of Naco golf course fertilizer, an exceptional plant food which combines all of the features most desired by greenkeepers who are intent on perfection in fairway turf and greens yet are required to keep a watchful eye on the budget.

Naco golf course fertilizer is renowned for its economy in use. "Less per green and less per acre of fairway" is the Nitrate Agencies' slogan for Naco.

Chief among its outstanding qualities are its capacity for releasing its ammonia (contained in Naco in seven different forms) slowly over a long period of time and its non-leaching quality.

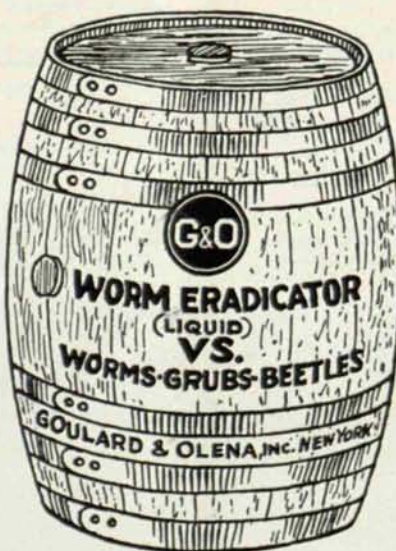
Samples of Naco will, of course, be exhibited. The Nitrate Agencies company will have its representative in the booth throughout the exposition to explain the advantages of Naco and to distribute literature.

### L. R. Nelson Mfg. Co., Inc. Peoria, Illinois

This company will have on exhibit in Booth No. 34 the well-known Lark Golf Sprinkler as well as a full line of lawn sprinklers, hose nozzles and garden hose couplings, menders and clamps.

It might be well to mention that we have two improvements on the Lark. First, there is a new nozzle we have installed which controls the rate of revolution of the main stream. This nozzle is a thumb screw arrangement which enables adjusting the sprinkler easily and accurately for the control of its speed and even coverage.

The other feature is a new long main bearing that gives a longer life, and also this bearing has a sediment proof arrangement which prevents the head whipping as it revolves.



SOME OF THE PRODUCTS OF GOULARD & OLENA, INC., WHICH WILL BE SHOWN AT THE NEW YORK GREENKEEPERS' SHOW

## Fate-Root-Heath Company Plymouth, Ohio

A new mower sharpener embodying many unique features, and known as the Peerless Model D, has just been brought out by The Fate-Root-Heath Co., Plymouth, Ohio. It will be demonstrated at the Greenkeepers' Golf Show in booth No. 26.

This machine grinds all makes and types of power-driven, fairway, putting green and hand mowers without removing the mower wheels or reel knives. It grinds the blades with the proper clearance behind the cutting edge, makes the mower run easily and lengthens the life of the mower. It is extremely accurate and very fast.

The carriage is a one-piece heavy casting with renewable V tracks which ride on 15/16-inch steel balls. The carriage has a travel of 42 inches and is provided with adjustable stops. The bed is also a one-piece box section heavy casting with renewable tracks. The tracks are made of hard iron, insuring long life. The carriage, rolling on steel balls, requires only a slight pressure for feeding the work along the grinding wheel, eliminating all feed mechanism.

The grinding head is attached to a vertical post and carries a 6-inch grinding wheel, mounted on ball bearings, driven by a 1/3 H.P. motor by means of a "V" belt. This makes a smooth, quiet and compact drive.

Mowers are carried on supports which have both verticle and horizontal adjustment, the final adjustment to grinding wheel being obtained by a fine thread screw at each of the supports which bridge the carriage. Separate attachments are included for grinding both faces of the straight blade for either large or small mowers.

A Reconditioner Attachments can be furnished, at an additional price, for "lapping in" putting green mowers after they have been ground, or for reconditioning slightly dull ones, with grinding compound or emery paste. This is of the utmost importance.

This attachment can be quickly clamped to the carriage of the sharpener by means of two clamps. The attachment consists of a direct-connected special combined motor and

speed-reducer unit, an adjustable roller support to raise and lower the reel shaft, two driving couplers and five pounds for grinding compound. The motor unit is mounted on a sliding base which gives a horizontal adjustment, and drives the reel knives at the proper speed for lapping in.

Both motors are wired ready for operation and a 10-foot cord furnished to connect to line. Motors can be operated on either 115 or 230 volts single phase 60-cycle current.

### Milwaukee Sewerage Commission Milwaukee, Wis.

The Milwaukee Sewerage Commission, manufacturers of Milorganite turf fertilizer, will be represented at the Greenkeepers' Convention by V. H. Kadish, Business Manager, and O. J. Noer, in charge of their Service Bureau. Both will be in constant attendance in Booth 31, prepared to discuss pertinent fertilizer problems with club representatives.

For the coming year Milorganite prices have been materially reduced and the plant food content increased from 20 to 25 per cent more than formerly. This will enable clubs to continue customary fairway fertilization.

The increased plant food content is not due to addition of inorganic materials, but the result of improvements in the process of manufacture. Milorganite continues to be a high-

grade, strictly organic plant food. In view of the higher plant food content, rates of application can be reduced 20 per cent and still supply as much nitrogen and phosphoric acid as formerly.

Sales to golf clubs during 1931 were gratifying and all signs point to its continued popularity during the coming season. The Service Department will continue to help clubs devise an economical and effective feeding program. Where necessary, they are prepared to make examinations and such soil tests as seem essential.

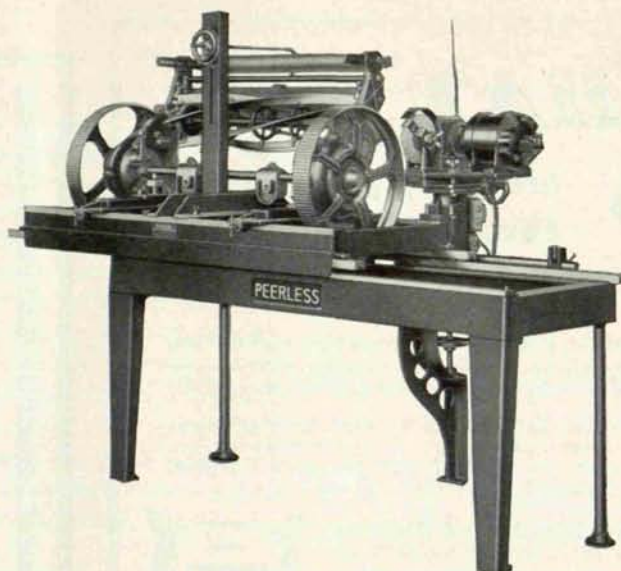
### Peter Henderson & Company New York City

Peter Henderson & Company exhibit will consist of a collection of modern golf course equipment, also samples of turf with the accompanying samples of seed from which they were produced.

The exhibit will be in charge of Mr. Harold Gilman.

### Dow Chemical Company Midland, Mich.

This exhibit will contain a display of Dow lead arsenate especially recommended for use on golf courses, greens and fairways, to eliminate grubs, beetles and earth worms and to control the growth of obnoxious weeds.



NEW PEERLESS MODEL D MOWER SHARPENER

*This machine will be demonstrated at the National Greenkeeper's Show in New York.*



## The C. B. Dolge Company Westport, Conn.

Our booth No. 27 at the National Greenkeepers' Convention and Show in New York will include mechanical displays, samples of Dolge products, as Diworma (the quick and safe worm eradicator), Dolco Ant Killer, Ban (the all-purpose cleaner and the sudsless cleaner for golf ball washing machines), Dolge Weed Killer, Dolco Mouse Cereal (for moles) and disinfecting, deodorating and cleaning products for the clubhouse use.

The booth will be attractively decorated and there will be valuable souvenirs for all those calling at the booth. The booth will be in charge of Messrs. George Herrmann and Lloyd Dolge. We plan to have other Dolge representatives there at various times.

Special offers on various Dolge products will be made during the Convention period. These offers will affect a saving and give valuable free goods with orders and will be valid only on orders taken during the Convention period.

## O. M. Scott & Sons Co. Marysville, Ohio

At Booth No. 28 we will display samples of our golf course seeds. Included will be some very fine *Poa Annua* of a recent importation.

For the benefit of those attending the convention we will distribute convenient note books. These prove so very popular with greenkeepers especially at the last convention that we have decided to make this an annual custom. As before these convention note pads will be absolutely free.

The O. M. Scott & Sons Company of Marysville, Ohio, has announced that they will again publish a complete report of the Educational Conferences to be held in connection with the New York convention. This report will be similar in scope and purpose to those which were issued following the Louisville and Columbus Conventions.

They have met with very hearty approval because those greenkeepers who attend find that a digest of the talks helps them to remember the vital points. At the same time they



SOME OF THE DOLGE PRODUCTS WHICH WILL BE ON DISPLAY

*These include Ban for cleaning golf balls, Diworma, worm eradicator and the Dolge weed killer.*

can have the report sent to the Green chairman and other club officials to show them just what the association is doing. This year the report will be sent only to those asking for it.

Requests may be mailed direct to the O. M. Scott & Sons Company or left at the display booth at the golf show. It is suggested that each greenkeeper leave the name of his chairman and any friends that might be interested.

## Atkins & Durbrow New York City

Atkins & Durbrow's exhibit will again feature the GPM brand of granulated peat moss and Driconure, nature's own fertilizer.

Driconure was introduced at the National Greenkeeper's Convention in 1930 and since that time it has made remarkably rapid strides. Greenkeepers the country over have taken kindly to Driconure.

They find this product which is a combination of peat moss and cow manure, to be the ideal organic top dressing for greens. It is finely pulverized, guaranteed free from weed seeds. It contains all the elements essential for the growth of good turf and while it is high in nitrogen it can be used safely with absolutely no fear of burning.

The GPM brand of granulated peat moss is not an active plant food but it is a mechanical soil improver and is used by hundreds of greenkeepers for winter mulching purposes and for soil incorporation in the building of new greens or the renovating of established greens.

We will have a series of photo-

graphs showing the effect of peat moss on soil texture that will be of particular interest. The exhibit will be in charge of Mr. Carl L. Mack.

## American Cyanamid Sales Co. New York City

American Cyanamid Sales Co., will exhibit Barbak 211, a fungicide with fertilizing qualities which was on the market last year and extensively sold and used by golf courses all over the country. They will also exhibit a new product selling under the name of Barbak Double X. This is a turf disinfectant for control of brown patch containing no fertilizer but with mercury content approximately double that of Barbak 211.

Mr. B. C. Culver will have charge of this exhibit.

## Bayer-Semesan Company New York City

This company will have on display their brown patch fungicides, Semesan and Nu-Green and will distribute pamphlets pertaining to these products to those attending the show. They also expect to show photographs of results obtained with Semesan and Nu-Green.

Of most interest, however, should



BAYER SEMESAN PRODUCTS

be the motion picture projection machine that they plan to install in their booth, which will give an interesting story of how brown patch may be controlled with Du Bay fungicides.

### Jacobsen Manufacturing Co. Racine, Wis.

An event that is looked forward to by Greenkeepers all over the United States is the coming Sixth Annual Greenkeepers' Golf Show and Convention at New York, Jan. 19th-22nd, 1932. Again the Jacobsen Manufacturing Company at Racine will have a complete exhibit of Power Putting Green Mowers and Accessories at Booth No. 37.

One of the accessories to be displayed, and one that should be of great interest to the greenkeepers is the Jacobsen patent brush attachment for aerating Creeping Bent greens, preventing "Brown Patch" and for the perfect spreading of top dressing. "Brown Patch" is a fungus growth and is known practically everywhere in the United States. It may occur at almost any time during the growing season.

It is a well-established fact that the chief cause of "Brown Patch" is the failure of air and sun penetrating to the roots of closely-cut, heavily top-dressed grass with a thick root system. In addition to the various chemical mixtures recommended for "Brown Patch" it is also necessary to give some treatment which will aerate the grass thoroughly. For this purpose the Jacobsen Power Greens Brush attachment is ideal. It penetrates to the soil and enables the greenkeeper to aerate the greens in record time.

The Brush also prevents the bent from running and brushes up the

matted grass so that the mower can cut it. Matted greens, of course, allow the ball to travel fast and free in one direction and make it travel sluggishly when played for another direction. The Greens Brush will also brush in the top dressing more thoroughly and quickly than it can be raked. It gets right down to the roots of the grass so that it is possible to topdress in the morning and have a perfect playing green in the afternoon.

It was in 1923 that the Jacobsen Manufacturing Company first introduced a Power Putting Green Mower to golf clubs. Like any new product, it was received with a certain amount of skepticism, but actual demonstration of its ability on various putting greens, won early and favorable recognition among greenkeepers.

The present improvements in the present Jacobsen models consist of: Extreme light weight, high speed power-driven reel and extreme light weight.

### Mallinckrodt Chemical Works, St. Louis, Mo.

Mallinckrodt Chemical Works, the manufacturers of this well-known brown patch remedy, Calo-Clor, as well as Calogreen and Corrosive Sublimate, will be on hand to explain the value of these preparations for brown patch, earthworm and snow mold control.

Interesting data will be available to show the economy and effectiveness and these inorganic fungicides based on experiments and experiences of greenkeepers in different parts of the country.

Extra copies of their interesting and informative brown patch bulletins will be available to anyone who would like to have them.

### Dayton Irrigation System White Plains, New York

Each season emphasizes the necessity of modern irrigation for golf courses. Modern irrigation requires faultless design of sprinkler heads, as well as competent engineering.

Dayton Irrigation products have always been noted for their advanced design built around basic principles, producing a scientific distribution of water over large areas with a minimum of pressure and consumption. The greenkeeper's prayer for a "gentle shower" at critical periods can be answered by adoption of Dayton products, either underground or portable.

Herewith is an illustration of a Dayton underground head suitable for fairways, greens and large tees. This head delivers an even coverage—without flooding or washing—throughout a circle of large diameter. The "gentle shower" type of precipitation permits a positive control of the depth of penetration. Grass, rubber or plain tops can be specified, according to the use intended.

We also show one of the famous Dayton Greenway sprinklers in operation. Here is an item of rugged construction that will deliver surprising service. Roller or skid base, extra nozzles, removable bushing permitting use of 3/4-inch or 1-inch hose, low price, are but some of the many features.

Dayton Irrigation will announce and display at the convention a new medium-priced sprinkler for golf greens, capable of a large coverage upon a low pressure, and adjustable while in operation.

This company specializes in irrigation equipment, both permanent underground, and portable, and does not permit its personnel to branch out into other forms of construction



JACOBSEN MOWERS IN  
OPERATION

The scene on the left shows the  
Jacobsen Estate mower at the  
Scioto Country Club,  
Columbus, O.

The scene on the right shows the  
Jacobsen mower with brush  
attachment at the North Hills  
C. C., Glenside, Pa.





DAYTON GREENWAY SPRINKLER

or maintenance. All its products are sold under a broad guarantee, and the entire organization is geared for prompt and efficient service.

Golf chairmen and greenkeepers will appreciate the unusual display of equipment and modern ideas arranged by Dayton Irrigation of White Plains, N. Y., and Dayton, Ohio, at the annual Golf Show. The foregoing are but a part of this educational display. All are cordially invited to visit this exhibit.

### Standard Mfg. Company Cedar Falls, Iowa

The features of the Standard exhibit will be the hole cutter, the light weight steel flag pole, and the one-piece aluminum hole rim. This company has endeavored to manufacture a hole cutter to meet the wants of the greenkeepers for a cutter that is easy to operate, is built ruggedly and cuts true and clean.

The steel flag pole is three-quarter inch diameter and is constructed from a special strong, light weight seamless tube. It is reinforced at the bottom and is made to fit the one-piece aluminum hole rim cup, which is a part of the Standard outfit. The wall of this cup is thin with top inside edge rounded to eliminate rebound of the ball when putting. It is smooth inside and cannot injure the hands. The ball receptacle is strongly reinforced sloping to the center and with holes for adequate drainage. Pole socket is long and rigidly braced to always keep the pole in a straight, upright position.

Other Standard products include a bag rack made entirely from cast aluminum, also tee markers, fairway yardage markers, arrow tee markers, etc.



DAYTON UNDERGROUND SPRINKLER FOR FAIRWAYS, GREENS AND LARGE TEES

### Swift & Company Chicago, Ill.

Swift & Company will have a unique display featuring their complete plant foods. Emphasis is placed on the importance of proper feeding to reduce maintenance costs. Special emphasis also is placed on the importance of feeding a complete plant food to develop a strong, well-developed root system, as well as healthy, vigorous top growth.

### Campbell Irrigation Company Woodbury, N. J.

In its exhibit at the Golf Show this company will emphasize the Slow Rotary, which is a portable sprinkler for watering putting greens and fairways. It is made of the highest-grade materials and is equipped with two nozzles, each one of them of different size and shape and all of them set at proper angles for distributing the water evenly in fine sprays over the area to be covered. The makers claim that this sprinkler will cover an area from 7,500 to 12,000 square feet according to the pressure. It will operate on a pressure from thirty-five to one hundred twenty-five pounds.

The Campbell Company has developed a new model disappearing sprinkler called the "Grasshopper,"

which is designed for watering fairways, tees and greens. The features of this have been withheld as a surprise to be displayed at the Show.

### Hyper-Humus Company Newton, N. J.

W. P. Troxell will preside as usual at this exhibit and expects the greenkeepers will give him the annual opportunity to tell them "Why." He has something "up his sleeve" this time; a new winter covering for greens and also to mulch the plants around the club house.

A lot of things have been happening in a scientific way, over in New Jersey . . . Hyper-Humus has been put through its paces in rigorous tests in more than a dozen ways. One that interests greenkeepers is the persistence of Hyper-Humus in staying in the soil.

It will be worth every greenkeeper's time to ask Billie Troxell about this because these tests have proven that Hyper-Humus lost but 9.9%, whereas common peat, peat moss, rotted manure, spent mushroom soil lost from 13.4% to 32.4%—the latter being manure.

Mr. Troxell will be assisted by H. J. Diem of New York and Messrs. Ballagh and Gustin of Philadelphia.