

### Extra Land is Good Investment

THE size of the site must be carefully considered. It is usually wise to acquire a few extra acres. This extra land may often be sold at a handsome profit. A country club always raises property values and should be the one to benefit. It is better to have an acre to spare than to be obliged to pay a fabulous sum later for an acre or two to complete the development.

The probable ultimate membership of the club must be borne in mind when acquiring the site. Fee courses are likely to be unhappily congested if ample provision is not made to accommodate large crowds week-ends and holidays. In many cases it is very desirable to have extra large fairways to avoid danger.

The accessibility of a site is one of the most important factors. Golfers are reluctant to join clubs located too far away from their homes or places of business. Speedier automobiles make time more of an element than distance however, and the conditions of the roads to the links is of more importance than the actual distance. Often a short stretch of ill-kept muddy road is more of a detriment than several miles of well-paved highway. As a country club cannot control the upkeep of the roads in its vicinity, it should consider in advance the likelihood of such roads being kept in repair.

While almost all families belonging to country clubs have an automobile not all families possess more than one yet. Frequently while

one member of the family is using the car, another would like to play a round of two of golf. Therefore, a site on a suburban steam or electric line or motorbus route is a decided advantage. Such a location has an important publicity advantage.

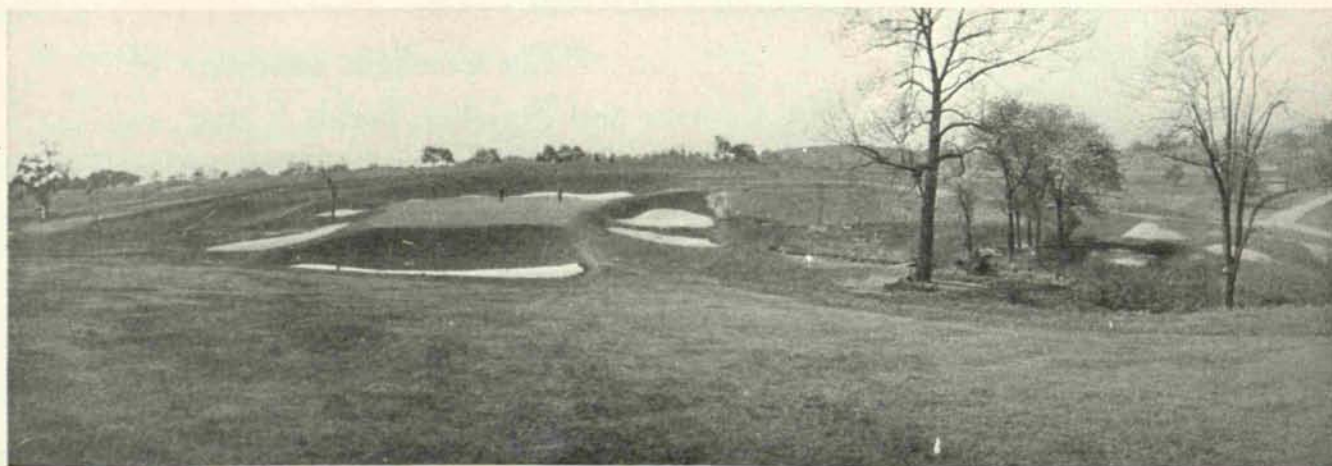
But because a certain piece of land has been suggested as a site for a golf course does not mean that it would be unsuitable. On the contrary, it might be ideal for the purpose. There are many fine golf course sites in every section of the country. Probably some of the very best sites are still undeveloped.

A magnificent course, no doubt, will sometime in the near future be developed along the shores of Lake Michigan or Lake Erie in the attractive sand dunes, the God-given land of golf. Here may be found a perfect site, moulded by Nature with its wind-made gaps and valleys that defy imitation. So it is the Great Artist who makes the best golf course sites. Man at his best is only an imitator.

*Next Month—Designing the Course*

### Hawkins Appointed Organizer

H. HAWKINS, greenkeeper, Lakeview Golf & Country Club, Port Credit, Ontario, Canada, has been appointed by the Directors of the National Association of Greenkeepers of America, as organizer for the Canadian District. Mr. Hawkins occupies the same position in Canada as Lewis M. Evans of Philadelphia in the United States. He is already hard at work lining up new members among the greenkeepers of the golf courses of the Dominion of Canada.



THE 16TH HOLE AT THE PITTSBURGH FIELD CLUB

*This hole was reconstructed about two years ago under supervision of the late John McNamara, greenkeeper*