

I would pick up stolons and replace and top-dress in. It eventually stopped raining and I have never planted greens which grew so well and developed so fast.

This has been a bad year on new greens as well as old, but a perfect year for weeds. I turned the greens in for play August 15. They were filled in beautifully. I weeded these greens once only and at the present time there are no weeds of any kind.

After the stolons had stayed put for a week or ten days and had started to turn green the chairman of the Green committee called me and said he had never seen anything so remarkable. He had expected to spend \$125.00 on each green again for new stolons.

Corrosive for Worms

By JOSEPH FOEGER, *Greenkeeper*

Ozaukee Country Club, Thiensville, Wisconsin

IN ANSWER to your letter of October 1, I wish to tell you of my experiences of the past season. We had some brown patch and used Nu-Green to treat some but was not very successful; so used Semesan instead with very good results. I think too much sulphate of ammonia is often the cause of brown patch. It makes the grass grow too quickly and so is too soft to withstand the brown patch.

We had no crab grass and hardly any chick-

weed this year. Our greens were covered with same just a few years ago. Have been using arsenate of lead for the last two years. I am not using it as strong as recommended, only about ten pounds to the average green using a power sprayer. This also takes care of the worm situation.

Am enclosing a picture that I took three years ago when I used some corrosive sublimate to treat the worms. You can see at a glance how thick they were. Before using arsenate the worm casts were so thick you could not walk on the greens without stepping on some.

We built six new tees, two bunkers, rebuilt five bunkers, all of this being done with the regular crew of fourteen men. Also had a lot of extra work getting things in shape for the Western Open Tournament which was held August 21 to 24 with the greatest success.

Snow Mold at Winnipeg

By A. W. CREED

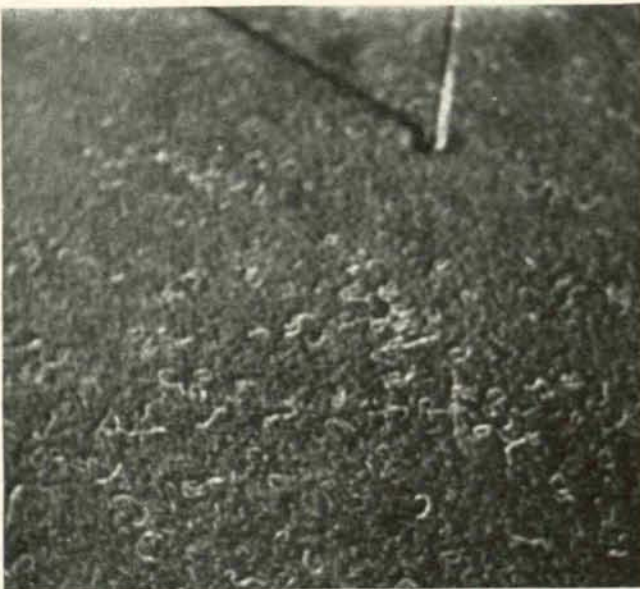
St. Charles Country Club, Winnipeg, Manitoba

BEING a Charter member of the N. G. A. of America, I want to congratulate the capable body of officers for the business-like and efficient manner in which the Association is being carried on and I am sure the results obtained so far in such a short space of time are a credit to their organizing ability.

Am now situated quite a distance from my fellow greenkeepers whom I knew personally when in Detroit, being assistant to the well-known greenkeeper Mr. H. E. Shave of Oakland Hills Country Club, leaving there to take up the position as head greenkeeper here in Winnipeg.

Conditions here are much more severe in the Spring than in the East, many of our *Poa Annua* greens being entirely destitute of grass until the temperature hovers around the sixty mark and that means about the middle of May. Our Bent greens stand the Winter fairly well. We are gradually turning all our *Poa Annua* greens into Bent.

I have constructed and planted four greens to Bent last year, and one this year. Last year I got forty bags of stolons from one of our well



WORMS ON THE OZAUKEE GREENS

This photo was taken after corrosive sublimate had been used

known greenkeepers of Detroit, who I see, advertises in our Magazine and it sure has made us a dandy green, there being very little grain to it. Our other Bents having to be raked both ways in the growing season three times and mowed close from which they soon recover; also have our No. 4 in Cocoos or Seaside Bent, which I consider has given us the least trouble of any of our greens and the best service, there being no grain, the color good and the putting perfectly true, even in the driest season of which this year has been a record.

Our course is nearly surrounded by the Assiniboine river and comprises 247 acres, beautifully wooded with fine elms and with a polo field on the same property. We water our greens from 6 to 9 in the morning thus helping them through the day's play, which is always heavy, having around 900 members.

The green constructed this year was our 14th, the old green being quite flat and cut out of the prairie. We built this up with about 600 loads of earth (Gumbo) with 4 inches of compost on the surface, graded and bunkered it, put on Washington Bent sod from our nursery of which we have two acres, and from start of building green to playing the same was twenty-three days. I can assure you the members were highly delighted.

Last year our club bought 57 acres of well wooded land adjoining our present course and we are at the present time constructing a new 9-hole course, the architect being Dr. McKenzie, Drainage Engineer Mr. Wendell Miller with Mr. Ben Zink and Mr. J. Fleming as associates to carry out their plans.

On our 18-hole course we employ 14 men with one assistant during the season, also two tractors, 1½ ton truck, one team and incidentally we swear by the Toro mowers both for greens and fairways.

My greatest worry is snow-mold in the Spring when the snow melts, leaving a coat of slime over the greens in patches. I have washed these off, brushed them with steel brooms, but this slime or fungus still kills the green wherever it has been. I am trying out Mercury C. S. this fall to try and overcome this. If any of our fellow greenkeepers have

a remedy for this shall be glad to hear from them. Should any of you land up here in the winter-time a warm welcome awaits.

In conclusion, our club is officered by men of experience in club affairs. Our president Mr. C. Joyce, who is also our Chairman of green committee, and our Hon. Secretary Mr. C. W. Jackson are very enthusiastic in giving assistance whenever required. I also have the hearty co-operation of all our officers and members and our aim is to make St. Charles Country Club golf course the finest in Western Canada.

Hope to meet you in Louisville.

Maine Reports

By SAM BARBAROSSA, *Greenkeeper*
Portland, Maine

THIS summer I had very little trouble with brown patch, but I used Semesan on the greens. Starting on the first of July I applied it every two weeks until the middle of August.

I had some weeds on my greens this year but not more than usual. I think the weeds come from the topdressing I put on four or five times during the year.

In the beginning of the spring I had some trouble with worms but I used Carter worm killer once in the spring and once in the fall and that killed the worms. I put one hundred pounds to a thousand square feet.

Lots of Work at Moundsville

By CHARLES S. KESSELRING, *Greenkeeper*
Moundsville Country Club, Moundsville, West Va.

I HAVE been negligent in writing my experiences to your valuable paper, but the fact is I have been so busy. I moved to Moundsville, March 16, 1929 and took up my work at the Moundsville Country Club, March 18.

First, the machinery had to be all overhauled and was in very bad condition, and the course was badly run down. It is a nine-hole course but I only had two men to keep the work going up until the first of August when one man was laid off and I only have had one since that time. The busy season has slackened up since that time and I think I