

Planting Around the Clubhouse

By A. H. TOMLINSON, Associate Professor
Ontario Agricultural College, Guelph, Ont.

Read at the National Greenkeepers' Conference at Buffalo

IT is taken for granted that nowadays golf courses are likely to be found in the most beautiful settings of the countryside. This outdoor sport has always been associated with the open air, sunshine, wide swathes and where possible wonderful trees and flowers. Thus designing and planting a golf course from an aesthetic aspect is much in order, especially if perchance in the making of the course it should have taken away from the beauty of the topography and an alluring countryside.

A golf course ought to be a beautiful thing, and if not, somebody is heavily in debt to the neighborhood. A golf course should be adorned by nature's own planting or otherwise with trees, evergreens, shrubs and flowers.

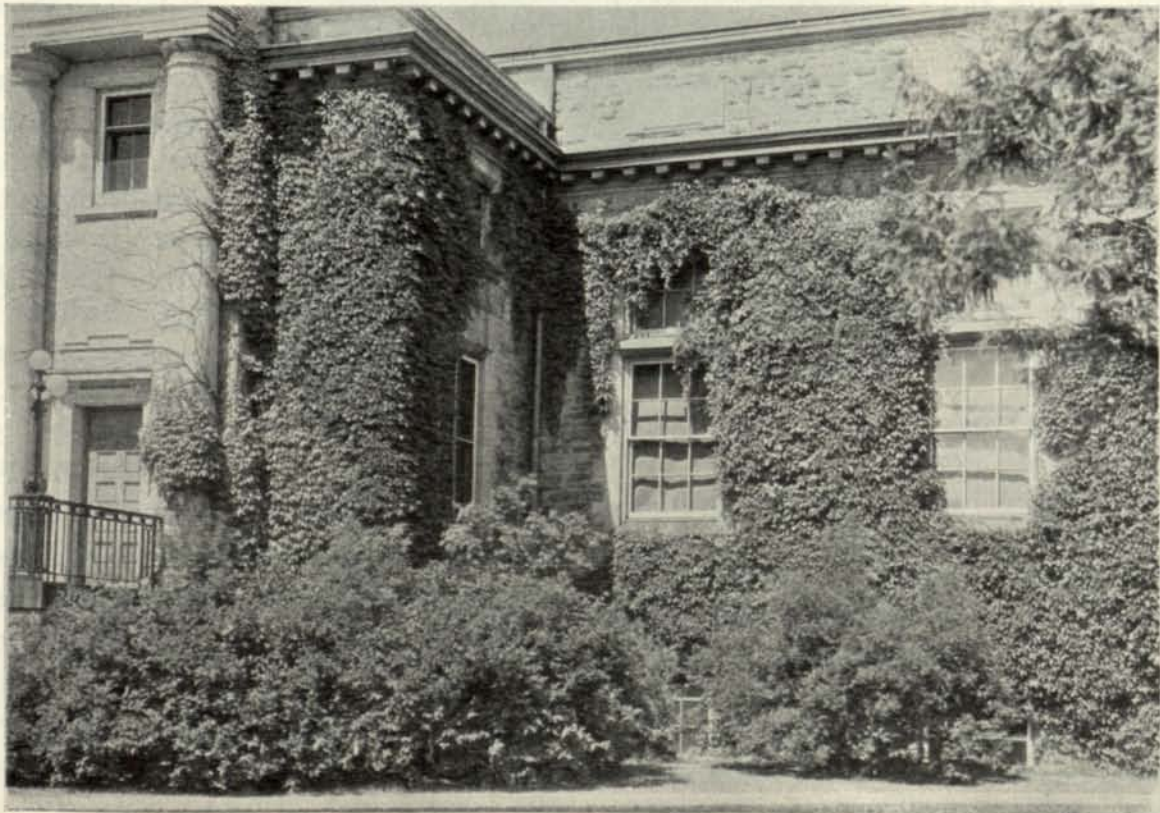


PROF. A. H. TOMLINSON

A restful yet animated spirit of rural loveliness should be the theme. A pleasant spot where the finest of sports may be indulged amidst the wonders of arboreal and floral creations.

The buildings erected on such a golf course should be in keeping with the environment and atmosphere and whether they be small or large, should fit in. Planted around and near the various buildings there ought to be forms of trees, bushes and flowers; these to

aid in making the scheme one of unity and harmony. Furthermore to suggest a feeling of welcome and abandonment, harsh and uninteresting entrances, doorways and wall spaces may be softened with suitable planting. Thus suitable garden subjects ought to be



IVY AND FLOWERING SHRUBS ENHANCE THE BEAUTY OF THE COUNTRY CLUB

planted at corners and barren spots with the object of accentuating an entrance or doorway and parts of the foundation. Shade trees may be planted to give protection from the sun. A clubhouse needs such on hot, sunny days, whilst the cool winds of early spring, late autumn and especially in winter require stubborn resistance from groups or a row of taller conifers.

Native Plants Are Plentiful

Spread over this continent there is a splendid array of native planting subjects and what an extensive accumulation of exotic species and varieties may be procured. Usually for golf courses native trees and so forth should be featured. One may mention American Elms, Maples, Oaks, Beech, Birch, Tulip trees and a Magnolia. In conifers the White and Red Pines, White and Blue Spruce, Hemlock, Cedars, Junipers and the fairylike Silver Fir (*Abies concolor*). In the hot summer and arid sections, largely, other species would have to be thought of.

Many of the foregoing conifers respond splendidly when planted adjoining buildings as well as many of the foreign types of conifers, shrubs and low evergreens. The finest of course should be arranged around the clubhouse and at the main gateway of the course. The same form of conifer planting could be the vogue around the foundation of the building by way of one or more erect specimens for a corner supported by

oval forms. A similar thing may be done in bare sections of a wall base. Low spreading conifers may be featured to advantage as ground cover plants like the low growing Savins Juniper in varieties of *J. tamariscifolia* and *J. prostrata*. With such planting the so-called broadleaf evergreens as *Euonymus vegetus* and *E. radicans* are most desirable. On milder parts the *Pachysandra* is an acquisition.

These dwarf types are most suitable for planting against a wall foundation which needs partial covering or as an edging between taller subjects and the walks or grass. For buildings lacking in architectural design, shrubbery for foundation or base planting is admirable and particularly attractive are those of rounded and conical shapes. Not forgetting the delicate blossoms and delightful odours like the Mock Orange as *Philadelphus lemoine*, *Bouquet d'or*, *Virginal* and *Girandole*, also the early flowering *Spiraeas* as *Van houttei*, *Arguta* and the fern-like foliage variety *S.*



NORWAY SPRUCE AND BLUE SPRUCE ON CLUBHOUSE GROUNDS

thunbergii. Although without perfume the very early flowering goldenbells or *Forsythias* are most popular in the early spring, the golden currant or *Ribes aureum* too has its place in the early season because of its pleasing perfumes. For a little later flowering in brilliant reds and pinks the *Cydonia japonica* or Japanese Quince is most enchanting.

Japanese Barberry is Unparalleled

FOR planting in most any place the Japanese Barberry is without parallel. It is dwarf, possesses most attractive foliage, small bell-like flowers followed by green berries which turn red during Autumn. The foliage, too, turns a coppery red at that period. The new red leaf variety of this *Berberis*, viz. *B. thunbergia purpurea* is very fine, especially against such as gray walls or evergreens. In districts near the lake, *Kerria japonica* with its yellow blossoms, Irish green foliage and stems is splendid alongside where a low form is wanted. Summer flowering forms like the new *Viburnums* are worth planting as *V. carlesi*, *tomentosum* and *plicatum*.

The Lilacs or *Syringa* ought to have a place, preferably the large flowering varieties, not forgetting the pretty Persian ferns. Lilacs however, must be judiciously placed for decorating a wall or a foundation because of interesting shrubs which should be discussed.

A passing reference should be made to the broad leaf evergreens in *Kalmias* and *Rhododendrons* as well as the deciduous *Mollis* *Azalea*. They respond in more temperate sections and do best in acid soils and partial shade.

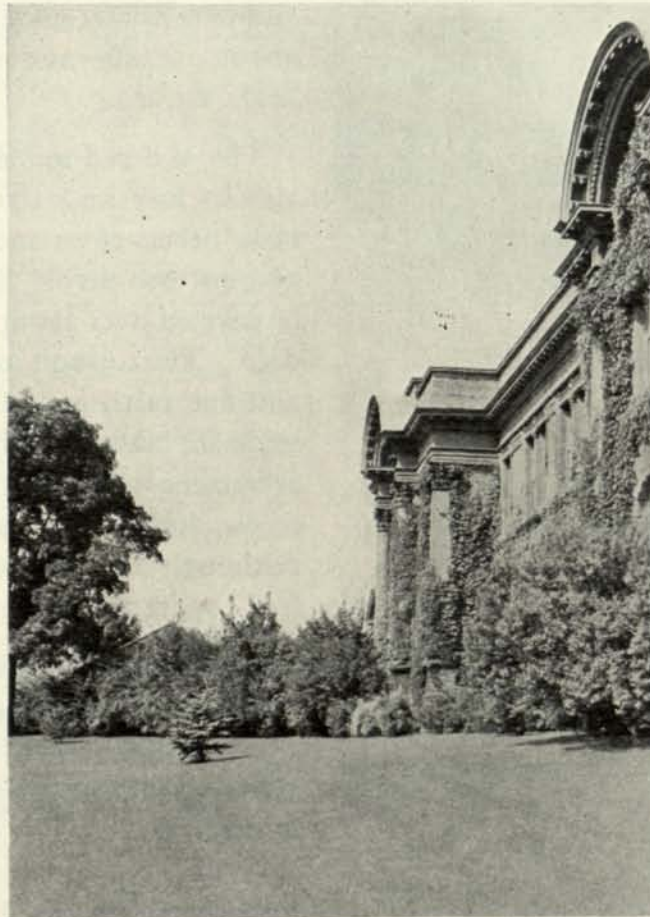
Where marked architecture is supreme a formal system of planting should be followed but if not, an irregular or naturalistic treatise is best.

For golf course treatment adjoining the club house open lawns with enclosures no doubt would be in order whilst shade trees ought to be considered for shade and conifers for wind protectors. Shrubbery groups may enclose the lawn, in some instances defined hedges or ornamental fences. On the inside of the enclosures perennials may be planted for border effect. Perennials could be set up at the hedge of shrubbery whilst hard spring flowering bulbs have special value for this purpose.

Out in the open borders and beds would likely be out of place; for the former a background is wise, whilst an enclosure is needed for flower beds. This latter means a formal effect where statuary and garden furniture of suitable design may be paramount.

Paths leading from one division to another of the garden could be of grass and in some instances flat stones. Cement is used a great deal but can often be substituted except perhaps for the mass paths. Stepping stones and crazy paths are

very popular, so are tile where the paths are very popular, so are tile where the buildings are of brick. Pagollas and archways could be part of the scheme in connecting sections or divisions or at entrances. These structures need climbers to cover them in part. Climbing roses, *Wisterias*, *Clematis* and *Honeysuckle* are tip top for this purpose. Rustic archways for a woodland theme may be



LARGE AND SMALL PLANTING ALONG THE CLUB-HOUSE WALLS



DWARF MOUNTAIN PINE

successfully brought about if the setting be suitable.

Good Common Sense is Keynote

EVERY setting is different and varied schemes may be much in order. It is a matter of enriching the site and building with floral and arboreal beauty. To do this unity must prevail which means that pleasing effects, harmony and balance must be paramount. In other words good common sense with artistic taste must be the keynote. Overcrowding and shutting out objects of beauty and interest must be avoided. Vistas may be created to extend and feature wonderful views. The course should be an integral part of the existing landscape, yet different. It should be beautiful and of decided character.

Planting around the club house and golf course generally means that planting material is needed from time to time, thus a nursery would be in order. This may be brought about without a great deal of trouble. An acre or so of land would be required if a large number of specimens are likely to be required,

but only a few square rods if just a few shrubs and trees are likely to be all the requirements.

In the first place many trees, conifers, shrubs and perennials may be raised from seed, others by way of twigs and shoots. This latter is known as the vegetative method. All native stock may be procured from seed sown in the Fall or Spring. The best thing to do is to think of the system followed by nature and act accordingly. For example, most seeds and fruits fall to the ground, become covered with leaves and so on; later germination and growth come about. Leafy and sandy soil will do as a slight covering.

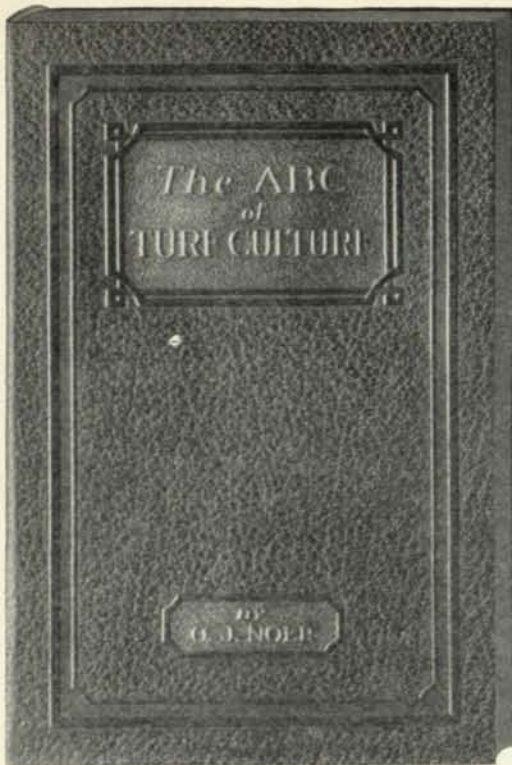
The seed bed soil should be at least comparatively fine and fertile. Some use enclosed beds, others rows and sow seeds not too thick and not too deep. Seed cones or nuts should be covered over about twice their circumference deep. The top soil itself should be loose. Sand and fine earth are admirable for this, but the seeds are better if lightly packed. Conifers or evergreens are better if slightly shaded and cheese cloth tacked over the sashes is splendid. Although laths wired together about $1\frac{1}{2}$ " to 2" apart are used a great deal.

Perennials Grow Well From Seeds

THE majority of perennials grow well from seed either sown in Spring or about July or early August. Dividing of perennials may be easily done. The early flowering kinds are best done fairly soon after blossoming is done, whilst with the late flowering forms, Spring is the best time usually.

Varieties of shrubs far removed from the original species do not always come true from seed, thus an artificial man-made method of perpetuation must be followed. This is why the vegetative, asexual or cutting systems are made use of.

In the Fall or early Winter the use of matured wood for propagation work is popular and gives wonderful results. Most shrubs may



Embossed Art Leather Binding—
Pocket Size

Price—\$3.00 Postpaid

ABC of Turf Culture

by O. J. NOER

The most practical and complete treatise on the growing of turf grasses ever published. Written in simple language which the layman can understand. A textbook on turf culture and soil chemistry.

The author combines a university education on this intricate subject with an intensely practical experience in golf course maintenance work throughout the United States.

A Reference Book for Every Day Use

CHAPTER HEADINGS

Factors Affecting Turf Growth	Lime in Sand, Soil or Water
Effect of Size and Arrangement of Soil Particles on Turf Growth	Often Overcomes Acidic Properties of Sulphate of Ammonia
The Part Water Plays in the Growth of Turf	Essential Plant Food Elements and How Plants Feed
The Functions of Organic Matter in the Soil	Elements and Characteristics of Various Groups of Fertilizer Materials
Soil Composition and How Plant Food Becomes Available	Composition and Properties of Individual Fertilizer Materials
The Nature of Soil Acidity and Effect of Fertilizer Materials on Soil Reaction	Principles Underlying the Practical Use of Fertilizers on Greens and Fairways

The National Greenkeeper, Inc.

405 Caxton Bldg. - - - Cleveland, Ohio

PERSONAL: TO GREENKEEPERS

LET us show you ways and means of saving time, work and worry on each job in your daily work. Let us show you how to make each job—whether big or small—more productive in the results you get. Let us show you how to get the results that gain quicker and higher recognition from Club officials. More and more greenkeepers are discovering a new quickness, thriftiness and efficiency in their daily work through the unusual assistance to be had from our complete line of supplies and equipment. FREE BOOK shows and tells about everything. Send for it NOW.

be handled in this fashion. The recent year's growth, or even older, will respond quite well. Shoots or twigs cut into lengths of about 6" to 8" are the usual thing but these are cut just below the bud at the base or larger end of the shoot and at the reverse end or top the cut is made just above the bud or it may be a branch. Following this the cut twigs or shoots, usually called cuttings by propagators, may be set out of doors in trenches and placed well down from half to three-fourths their length and the soil well firmed around them.

In very cold spots in clay sections if the work be done quite late in the winter these cuttings may be tied in bundles, covered with soil or sand or leaves and placed in a cool cellar or shed or in a sheltered place outside. Cuttings must not be allowed to become dry. In Spring the bundles must be untied and the cuttings planted singly out-of-doors in rows as already described. During Summer frequent cultivation is wise to aid rooting conditions in the soil and to control weeds.

GOLF COURSE SUPPLY CO.,
Dept. B 3049-51 Carnegie Ave., Cleveland, O.

Send me a copy, FREE, of that book I need.

Name _____

Club _____

Address _____