

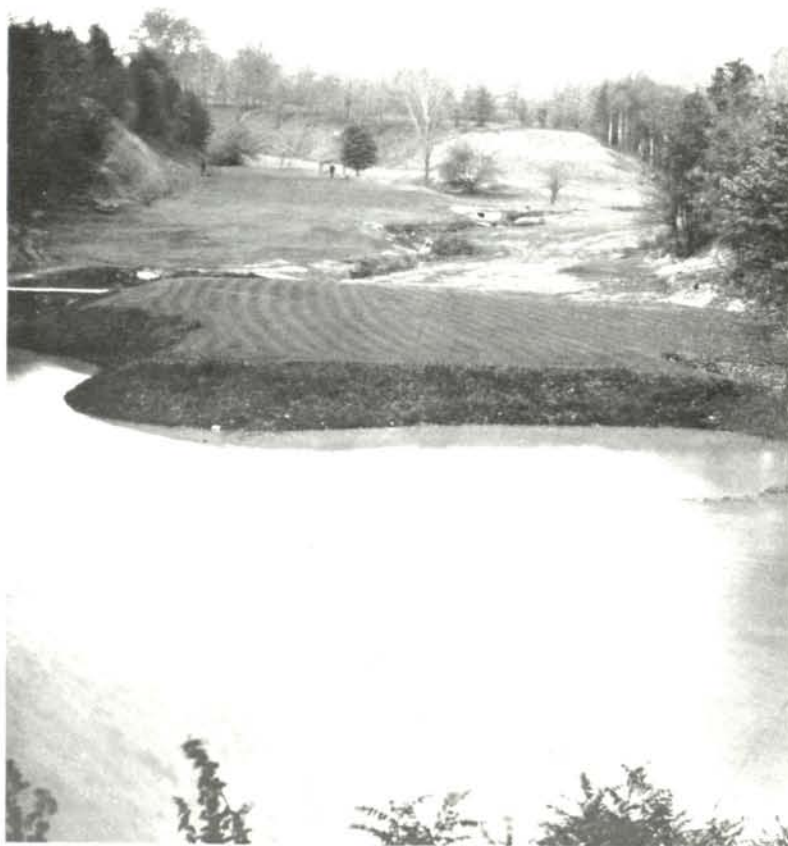
In This Issue—TURF EXPERIMENTS IN NEW JERSEY, By Doctor Howard B. Sprague

The NATIONAL GREENKEEPER

The Leading Journal of the World on Turf Culture and Golf Course Maintenance

DECEMBER
1929

25
CENTS



NO. 15 ON THE NEW MANAKIKI COURSE NEAR CLEVELAND

This picturesque one-shot hole is 200 yards from the back tee.
Donald Ross was the architect and builder.

Official Organ of The National Association of Greenkeepers of America