

# Golf At Put-In-Bay

By M. J. Fox

**A** GAIN we hear of historic Put-in-Bay, but in a new light this time—that of entering the sporting world. Construction on an 18-hole golf course was started in the early spring of this year. Nine holes will be ready for play at the beginning of the 1929 season. We understand from authorities who have viewed the layout that it has some very promising qualities.



## **BUILDING PUT-IN-BAY COURSE**

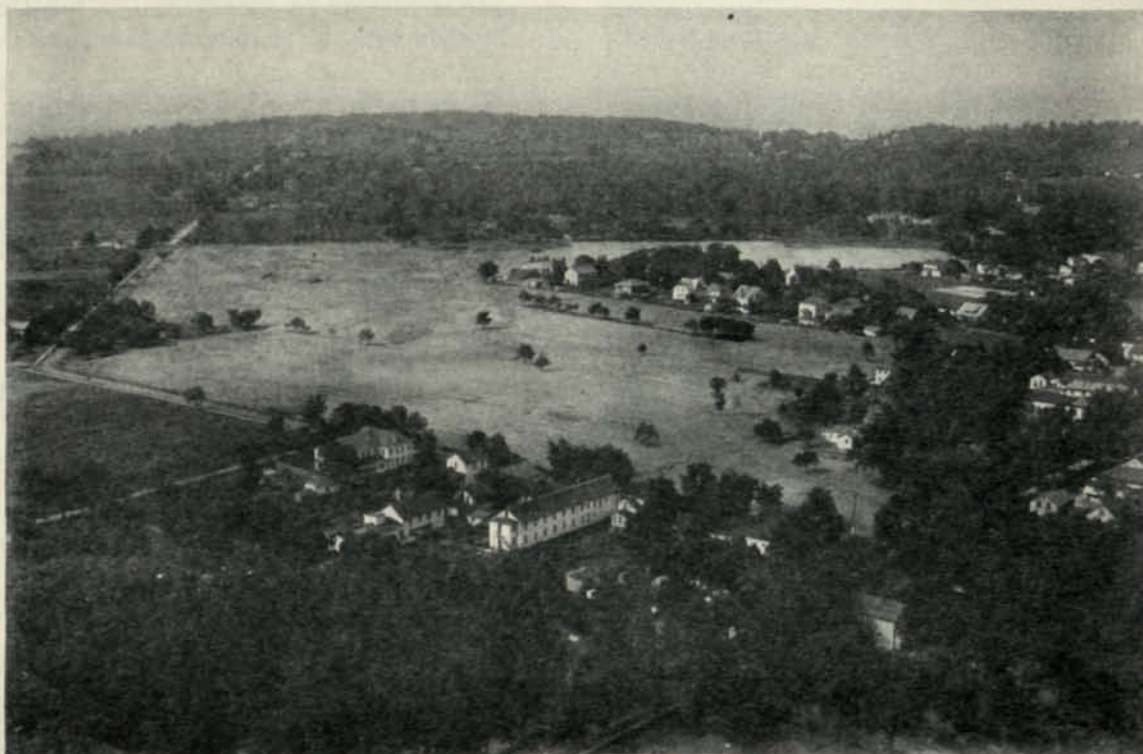
*Sidney Stafford, LaVerne Gordon and Wm. Ross snapped during construction of this new golf course in the middle of Lake Erie*

Put-in-Bay is ideally located in the middle of Lake Erie and is easily accessible during the navigation season from Cleveland, Toledo, Detroit and other points of the middle west. Already the committee members are visualizing a series of tournaments to be played over this sporty course in the not too distant future. Plans are underway at the same time for a modern 250-room hotel on the lake front which would furnish adequate accommodations for players.

If we were to brush up on our history we would find that long ago Commodore Perry used this little island and its natural harbor for his headquarters during the war of 1812. It is hoped that Put-in-Bay may again be brought into the public press in the history of the sporting world as well. The architect, Frederick Stafford of Cleveland, is to be commended for putting forth his best efforts in the building of this course.

## **Put-in-Bay Golf Club**

Hole No. 1	290 yards	Par 4
Hole No. 2	310 yards	Par 4
Hole No. 3	329 yards	Par 4
Hole No. 4	110 yards	Par 3
Hole No. 5	355 yards	Par 4
Hole No. 6	400 yards	Par 4
Hole No. 7	435 yards	Par 4
Hole No. 8	160 yards	Par 3
Hole No. 9	285 yards	Par 4
	<hr/> 2674 yards	



## **BIRDSEYE VIEW OF THE PUT-IN-BAY GOLF CLUB**

*This photograph was taken from the parapet on top of the Perry Monument*