

What's Doing About New York

By P. C. PULVER



R. A. JONES
General Manager and Greenkeeper
of the Baltusrol Golf Club

your linksman of today prefers. He wants his golf served up to the highest standard—a standard, by the way, which has only been brought about through constant and intelligent study of turf and soil conditions.

It was such study and interchanging of ideas that marked the gathering at New Brunswick on June 18 under the auspices of the Greenkeeper's Association of New Jersey. Affairs of that nature are doing their part in bringing about the transition between conditions old and new.

In sending out notices for the gathering at the State Experimental Station, F. J. Roth, the wide-awake president of the Greenkeepers' Association, extended a cordial invitation to all members of greens committees; in fact, anyone interested in the production and maintenance of turf for golf courses was welcome.

Good Attendance at New Jersey Meeting

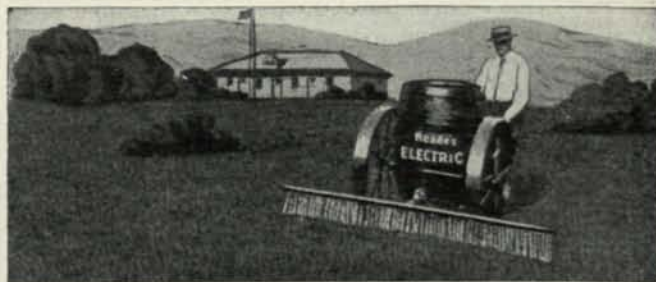
AS a result there was a good attendance. The New Jersey station has been experimenting with turf plots for a number of years and these plots because of

AN OLD timer, whose golf has been largely in the past, had occasion recently to visit a number of courses in New Jersey. Not in years had he paid any particular attention to golf conditions, consequently when his tour of inspection was over he kept referring to what he had seen in accents of surprise. One remark in particular he made is recalled by the writer somewhat this wise: "Why, these are not golf courses, they're parks." Well, compared with say thirty years ago the courses of the present possibly are park-like in appearance. Incidentally, that is what

their local character, were naturally of vital interest to green committeemen as well as greenkeepers throughout New Jersey. During the meeting held in the afternoon, talks were delivered by Dr. Lipman, on Fertilizers; by Prof. Cox, on Soil in New Jersey; by Miss Fiske, on Seed Analysis and by Dr. Sprague on Test Plot Work.

At the conclusion of the meeting the party adjourned to the turf plots for observation and discussion. In the evening there was an informal dinner at the Elk's Club with the speakers of the day as guests of the Greenkeepers' Association. The whole affair served to demonstrate more forcibly than ever that the Jersey association is an active, going organization, its one sole purpose having to do with the bringing about of better maintenance conditions among golf clubs where its members are employed in the State of New Jersey.

William D. Baucker, golf course engineer of Basking Ridge, N. J., is constructing a new course for the Valley Country Club at Hazleton, Pa. Herbert Strong, profes-



The Safe Way to Rid Greens of Worm Casts

"In regard to your 'ELECTRIC' Worm Eradicator, I can truthfully say from my experience that it is very effective. The men prefer it to the dry compounds, due to the simplicity of using it and the cleanness in handling."—Geo. H. Wolf, Supt., Briarcliff Lodge, Briarcliff Manor, N. Y.

Prevents "Brown Patch"—Improves Turf

"ELECTRIC" not only brings up the worms but actually improves the greens, stimulating, fertilizing and protecting against "brown patch" and other fungus diseases.

Order Now—We Ship on Approval

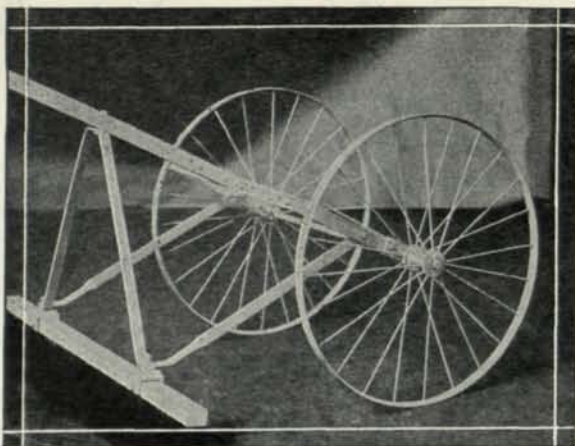
We ship "ELECTRIC" Worm Eradicator in 5, 10, 15 and 50-gallon containers. Each gallon makes 250 gallons of solution, enough to treat 3,000 sq. ft. Price, \$3 per gal. f.o.b. factory. Measure and glass jugs for handling included free.

With orders for 10-gallons or more, we supply the Sprinkling Cart, shown above, at cost price, \$35.00.

Reade Manufacturing Company
195 Hoboken Ave., Jersey City, N. J.

ELECTRIC WORM ERADICATOR

THE MacGREGOR COMPOST BRUSH



What A User Says:

MacGregor Compost Distributor Co.,
Wheaton, Illinois.

Gentlemen:

Two years ago I had the pleasure of visiting the Chicago Golf Club, Wheaton, Ill., and I was deeply impressed with the methods used in getting the soils for top-dressing worked into the turf, by the use of a compost brush.

Having used several devices for working the compost into the turf, which have not given me good results, I tried out the MacGregor brushes, and I feel, owing to the good results which I have received from them, I should acknowledge my appreciation to you for the service that the two brushes which we received from you have given.

Yours truly, (Signed) John Morley, Greenkeeper,
Youngstown Country Club, Youngstown, Ohio

Write for Literature—We Now Sell Direct

MacGREGOR COMPOST DISTRIBUTOR CO.
P. O. Box 717 WHEATON Illinois

sional links architect, is revamping and enlarging the course at Beacon, N. Y., where Harry Vinall is in charge. Beacon has nine holes at present, but when Strong's work is finished there will be a full layout.

A development in New York State, not many miles north of the big town, is known as the Chappqua Country Club. It is on a large tract of land near Mt. Kisco, and a by no means small part of the attraction when everything has been completed will be an eighteen-hole course laid out by Donald Ross. This circuit is now nearly completed.

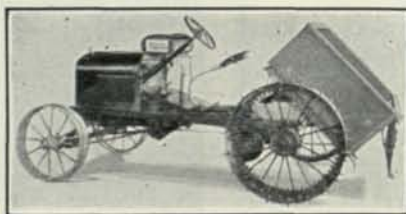
Upper Montclair Meeting

THAT greenkeeping and its ramifications are getting somewhere in the Metropolitan district received further proof at a gathering held June 11 at the Upper Montclair Country Club. Preceding that, first meeting under the direction of the New Jersey State Golf Association green section, green chairmen, greenkeepers, as well as quite a sprinkling of professionals who are not greenkeepers, assembled for play over the course in the afternoon. In the evening Dr. Monteith delivered a talk and there was a general discussion on matters of interest.

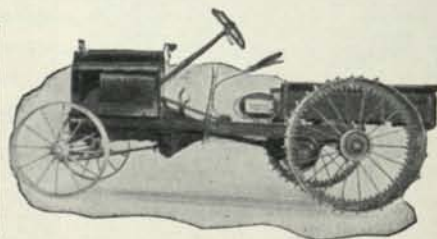
While the value of the tests made by the United States Golf Association green section at the Arlington turf garden near Washington has been appreciated, the question has often been raised as to the practical appli-



Staude Golf Course Maintenance Machine consisting of Tractor, underneath hitch, three 30" cutting units. Price only... \$695.⁰⁰



Staude Golf Course Tractor with steel dump body, capacity one cubic yard. Price only... \$495.⁰⁰



Staude Golf Course Tractor easily pulls five 30" cutting units, rollers, hay mowers, trailers, etc. Price only... \$420.⁰⁰

IT'S PERFORMANCE THAT COUNTS

More than 1000 golf clubs all over the country prefer the light weight, low priced Staude Golf Course Tractor. It is the ideal machine for all maintenance and reconstruction work. Compare it with other tractors. Test it on your own course in any way you like and if you are not satisfied return the tractor within 30 days and we will refund the purchase price. The upkeep cost is low and the purchase price is the lowest in the world for a General Utility Golf Course tractor. Write for list of users.

E. G. STAUDE MAK-A-TRACTOR CO.

2630 University Ave.

St. Paul, Minn.

cation of these results on courses in other parts of the country. Supplementing this work with further tests under various local, climatic and soil conditions may therefore be regarded as a natural outcome.

Three Green Sections Formed

IN CO-OPERATION with the Metropolitan Golf Association three green sections have been formed in that section, one by the Long Island Golf Association, one by the New Jersey State Golf Association and the other by the Westchester County Golf Association. Although each section has its own committee it works in harmony with the others. The objects of these green sections are to carry out tests on turf under local conditions and to bring together green chairmen and greenkeepers at occasional meetings for a better understanding of problems of course maintenance.

In New Jersey test plots have been prepared at two courses, Morris County Golf Club and Upper Montclair Country Club. Similar arrangements have been made in Westchester and Long Island, and it is also intended, where possible, to conduct some tests on a larger scale on the courses themselves.

Weeds at Wheatley Hills

QUITE a mystery was recently solved at the Wheatley Hills Golf Club at East Williston that may interest greenkeepers. For several years chairman Kidd of the green committee couldn't figure out why so many weeds appeared periodically at a certain spot on the

THE PERFECT GOLF COURSE SPRINKLER
COVERS GREATER AREA THAN ANY OTHER TYPE



GOLF KING No. 6

The sprinkler that Efficiency, Economy and sound business judgment demands. It has the slowest motion and is positive in action on fluctuating pressure, in wind or on hillside and is without a single whirling or fluttering part to get broken off.

Price on roller stand $\frac{3}{4}$ " conn. \$10.00. 1" conn. \$15.00. Larger sizes $1\frac{1}{4}$ " or $1\frac{1}{2}$ " conn. \$20.00.

The only sprinkler that can be used on HOSELESS SYSTEM with SNAP VALVES without "drowning" the attendant. Write us for full literature on SNAP VALVES which eliminate all control valves, all hose, all service leads and more than 50% of irrigating cost.

BUCKNER MANUFACTURING CO.
FRESNO, CALIFORNIA

FAIRWAY WATER HOSE

...wherever uniform quality and appearance is desired.



READ THIS:

Augusta, Ga.

"And further it is our opinion there is no better water hose on the market than Fairway. Its color and appearance is very pleasing and the quality runs uniform.

"We unhesitatingly recommend Fairway to anyone requiring a high grade water hose. Please use this letter in any way you see fit.

W. S. Smith,
Smith Hardware Co."

If you want a sample and prices use the coupon.

THE REPUBLIC RUBBER CO.
Youngstown, Ohio

Belting Hose Packing
Molded Goods Lathe Gut Goods



THE REPUBLIC RUBBER CO.
Youngstown, Ohio

Gentlemen:
Please send facts and figures on Fairway Hose.

Name.....

Address.....

City..... State.....

tenth fairway. The Wheatley Hills course is divided by the Motor Parkway and under a part of the parkway is an opening through which the west wind whistles. On the leeward side, as the nautical man would say, is the tenth fairway. On the windward side of the opening is a patch of rough filled with weeds, or at least was filled with weeds.

One day while on a tour of inspection Kidd saw the wind carrying the flying seeds of the weeds through the opening, and the mystery of the weeds on the opposite fairway was solved. Those particularly obnoxious weeds were removed from the rough and the trouble ceased, but for a long time their presence on the tenth fairway presented a worrisome problem. Wheatley Hills, by the way, never looked in better turf than at present.

Heavy Rains Soften Courses

THE frequent and heavy rains during the early part of June developed not a few soft spots on quite a number of the courses in the New York zone, although it is doubtful if the turf on a majority of the fairways has ever been in such fine condition. Up at Rockwood Hall, near Tarrytown, the course is in wonderful shape, with the possible exception of one spot at the tenth hole in a little valley where some of the artists and writers in their recent tournament managed to get their feet wet in a pretty piece of green that needed draining.

Your Grass Seed

Much of the Grass Seed that is sold today is supplied to the final, retail trade by large wholesalers. There are comparatively few houses that make their own importations, and of these few firms, Peter Henderson & Co. are an outstanding example.

We have always believed that there is a demand for the highest grade of Grass Seed—Grass Seed that could be depended upon, and the results have fully justified this belief.

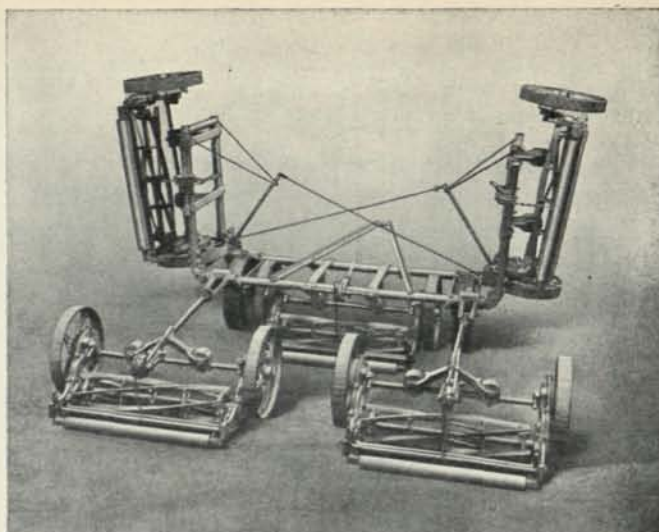
Use Henderson Seeds for at least a portion of your course this year. Let us quote you on your requirements, and you will be surprised to find that the prices for seeds of Henderson quality are about the same as you have been paying, but with a vast difference as to results. An inquiry does not obligate you in any way.

PETER HENDERSON & CO.
SEEDSMEN

Everything for the Golf course

35-37 Cortlandt St.

New York City



Still More *Cutting Hours*

The simplified design of the PENNSYLVANIA "New" Fairway Mower lessens the time required for adjustments, as well as the need for minor repairs, and thus insures a maximum number of *cutting hours* from this lighter, faster Quint or Trio. Furthermore, both the adjustments and any minor repairs may be made by the average tractor operator.

The "New" Fairway gives the same efficient, flexible operation as our Super Fairway. For instance, as shown in the illustration, it has the same unique lifting device which enables the operator to raise or lower the two outboard units without leaving his seat.

Its moderate price is another "New" Fairway feature. The price of the Quint (144-inch cut) is \$625; of the Trio, \$375; and of the single mower units, \$110 each—all f. o. b. Philadelphia.

Write for further facts on the "New" Fairway and for our new folder describing the Improved 1928 Model Super Roller Greens Mower.

PENNSYLVANIA LAWN MOWER WORKS

1628 North 23rd Street

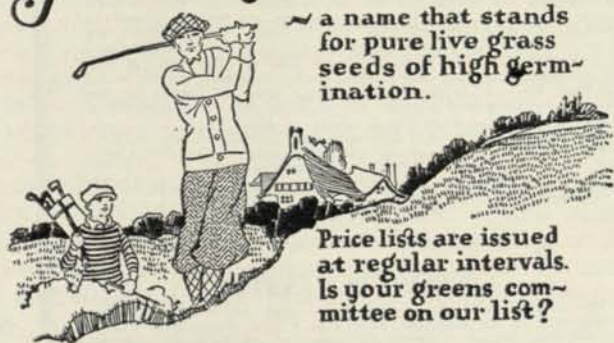
Philadelphia, Pa.

PENNSYLVANIA
Quality
LAWN MOWERS

Say you saw the ad in The National Greenkeeper

**Old English
Grass Seeds
for Golf Courses**

Old English Grass Seeds for Golf Courses



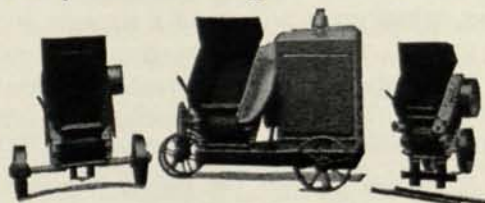
~ a name that stands
for pure live grass
seeds of high germ-
ination.

Price lists are issued
at regular intervals.
Is your greens com-
mittee on our list?

The Philadelphia Seed Co.
Old English Grass Seeds
103-105 Arch St. Philadelphia Pa.

R O Y E R

Royer Compost Mixers



"A Model For Every Need"

What a Royer User Says:

Hillcrest Country Club
Kansas City, Missouri

Mr. L. F. Mitten:

Now that I have had ample opportunity to test out the "Royer" this Summer, I think you will be interested in receiving this report, which is to this effect:

That the "Royer" has not only done everything claimed for it, but has really exceeded my expectations.

In the first place, from a mechanical standpoint, and the amount of Compost one can make in a day. The machine is so simple that there is nothing to go wrong about it. My personal opinion is, that it is the best machine on the market today for golf courses.

(Signed) George Robb, Greenkeeper.

**Save money for your Club
Make Better Compost**

L. F. MITTEN

820 Miners Bank Building
WILKES-BARRE, PA.

R O Y E R

At Lido during the invitation affair a few weeks since, the players were greatly surprised at the wonders that a new drainage system had worked. It seems that thousands of acres of lowland surrounding the Lido course had been filled in, causing water to back up into the course. The conditions looked bad for a time, but a system of ditches was cut and piped and now the course is in better shape than ever.

One of the surprising things in the Long Island section is the wonderful condition of the five daily fee courses at Salisbury. Jack Hagen has the entire layout groomed to everyone's approval, notwithstanding the fact that for the first time in Salisbury's history play was permitted throughout the winter and spring. On occasions a few players were allowed to use one or two of the circuits in the past, but this year the courses were open and a green fee charged. The play was quite heavy up to the regular opening, after which records were broken, as many as 1183 playing in the bad weather preceding Memorial Day.

But even if the aforesaid rains did soften up the fairways throughout the Metropolitan section they only slightly affected the attendance at the numerous events. The triangular women's matches between Long Island, Westchester and New Jersey was brought off at Montclair during a heavy downpour and rain also prevailed during the greater part of the three days required for the women's Eastern championship, also decided at Montclair. Then there was the Metropolitan Seniors' tournament—the first of its kind—held at Garden City midst two days of rain. This rain may be good for growing grass, but it tends to spoil the players, disposition, and if anything it increases the "chin" golf in the locker rooms.

New Public Course for Westchester

THE most impressive undertaking in a municipal way in the New York sector has to do with a 27-hole layout near Yonkers under the auspices of the Westchester County Park Commission. Tom Winton, who has had pretty much of a monopoly so far as these Park Commission course developments go, was the architect and he also has had charge of the construction work. The plan is to open the layout for play this summer. Just who the greenkeeper will be is at present in doubt. It is a Civil Service post, which of course, means an examination.

Winton, by the way, has just finished a course at Hopewell Junction, N. J., and he is also building a new nine holes for the Westport Golf Club, Westport, N. Y.

Quite an interesting development is being completed on Long Island by the Gould Realty Corporation. It is near Huntington on a beautiful tract consisting of some 300 acres containing houses of exquisite design, attractive roads and bridle paths to say nothing of an eighteen-

hole course designed by Devereux Emmet. The course winds through the woodlands. Because of the extensive nature of the work, play there will not be possible before next spring.

Hammock Course to Open Soon

THERE'S a new layout calculated ere long to lure linksmen to the vicinity of Larchmont, N. Y. It is known as the Hammock Country Club, where Nick Demane is in charge. Last year Nick became so interested in this development that he gave up his berth as professional at the Soundview club on Long Island, leaving his younger brother, Arthur, in charge there. At the Hammock club, where the eighteen holes are about ready to be placed in commission, a great deal of work was required, there being considerable fill coincident with construction. Demane laid out the course, which already has occasioned not a little favorable comment.

Course construction problems in addition to those usually encountered by professionals have been undertaken by Alick Gerard, the former Oakland pro, who this season took charge at the Maidstone Country Club out on Long Island. Gerard has been superintending a deal of re-construction work on that layout by the sea, which already has the reputation of presenting one of the best tests of the game to be found anywhere in this part of the country. Surely, Maidstone has no notion of getting behind the times.

Brown Patch and Angle Worms

By HENRY A. MILLER, Greenkeeper

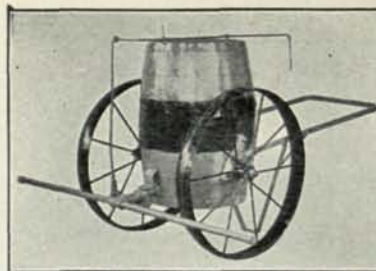
Barrington Hills Country Club, Barrington, Ill.

THE past season was rather bad for brown-patch in this locality. From the weather conditions we had it would almost seem impossible not to get brown-patch on the greens, as it had rained practically the whole summer and it was very humid at times, which will make brown-patch jump up and spread.

Being a wet season we had plenty of angle worms which from my experience helps to spread brown-patch (the more worms the more brown-patch) and also too much water will help toward having brown-patch. A green being surrounded by trees and woods or down in a valley where the wind and sun do not help dry out the wet and sour soil, will be an easy victim of brown-patch. But a green out in the open where the sun and wind can dry it out fast will withstand brown-patch much longer.

All our greens which were surrounded by hills and trees and which wouldn't dry out fast, and stayed wet for a long time had more brown-patch than the greens that were out in the open. Although this was the first year that we had brown-patch out here, owing to wet and humid weather conditions, it was almost impossible not to have it, but we didn't have any trouble controlling it with Uspulun treatments. We followed this with sulphate of ammonia or any quick acting fertilizer and a sand dressing which would dry up the surface and this

Grass Seeds GET OUR PRICES Fertilizers



CLEVELINE SPRINKLING CART

An improved sprinkling cart for applying fertilizers in solution and for the application of Semesan, Uspulun, etc. to the putting-green. It is a fifty gallon hard wood barrel mounted on four inch CONVEX tired wheels so that it can be turned on the green without injuring the finest turf. It is fitted with a brass valve that can be turned on and off by the operator from the rear. The boom has a spread of over six feet and is drilled with 103 one-eighth inch holes $\frac{3}{4}$ of an inch apart to assure an even penetrating flow. This cart will empty itself in about one minute. The construction of this cart is extremely rugged and should last many years.

CLEVELINE STEEL FLAG POLE

A light weight steel flag pole that will not warp, tapered at the end to fit any size cup. These poles come finished in a heavy lacquer, red tipped in black, and orange tipped in black. These are a very durable and attractive flag pole and are the greatest value on the market.

CLEVELINE FLAG SWIVEL

A bronze rust-proof wire swivel which may be attached to any wooden and to the Cleveline Steel Pole. This device will prevent the flag from wrapping around the pole. It can be easily attached by slipping the large loop over the pole and screwing the small loop to the top of the pole.

Write for our 32 page Illustrated Catalogue on Supplies and Equipment

GOLF COURSE SUPPLY COMPANY

3049-51 Carnegie Ave. - CLEVELAND, OHIO

A. E. FLACK

H. J. STREICH

would soon put a green on the way of recovery.

Care should be taken in mixing a solution of Uspulun for brown-patch for bent greens. From my experience a fescue or redtop green will stand a stronger solution than bent greens. I found that the mixture of solution described to be sufficient to kill brown-patch is too strong for a bent green. I had followed directions and had put it on spots of brown-patch on a bent green and almost burnt the spots up. It took the rest of the season to bring them back, and then they didn't green up the way they should. In the fescue greens, however, it didn't hurt at all as they got green again as soon as the disease was killed. But Uspulun will surely kill brown-patch, if you use it right.

A New Way to Fertilize

GOLF GREENS

The HYDRO-LIZER connects to the hydrant and liquefies, mixes and applies Ammonium Sulphate and other soluble fertilizers without burning; feeds golf green, lawns and flowers simply; economically while sprinkling; aluminum; nothing to adjust. Return in ten days if not satisfied. For quick, luxuriant growth use BELL PLANT FOOD, a complete fertilizer high in nitrogen. PLANT FOOD COMPANY, Desk 2, Montgomery, Ala.



HYDRO-LIZER

(Bell Plant Food Sprinkler)

FREE: 5 lbs. BELL PLANT FOOD free with each Hydro-lizer ordered from this advertisement.

Write for Folder