

Market Place and Buyers' Guide

Where reputable manufacturers and dealers list and describe their products. Greenkeepers are requested to write the Market Place for any special information they desire about supplies or equipment

Ball Washers

J. Oliver Johnson, Inc.
Stumpp & Walter Co.

Bent Stolons

Hubbard Nurseries
O. M. Scott & Sons Co.
Lyman Carrier, Inc.
Stumpp & Walter Co.

Brown-Patch Control

E. I. Du Pont de Nemours & Co.
Bayer Company, Inc.

Brown-Patch Disinfectants

E. I. Du Pont de Nemours & Co.
Bayer Company, Inc.

Compost Distributors

MacGregor Compost Distributor Co.
Toro Mfg. Company
Stumpp & Walter Co.

Compost Mixers

L. F. Mitten
Toro Mfg. Company

Drainage Engineers

Wendell P. Miller and Associates

Drain Tile

The E. Biglow Co.

Dump Carts

Toro Mfg. Company
Stumpp & Walter Company

Fairway Rollers

Toro Mfg. Company

Fertilizers

Milwaukee Sewerage Commission
E. I. Du Pont de Nemours & Co.
Stumpp & Walter Company
Golf Course Supply Company
J. Oliver Johnson, Inc.
Lyman Carrier, Inc.
Bestivall Mfg. Co.

Fairway Mowers

Pennsylvania Lawn Mower Works
Toro Mfg. Company
E. G. Staude, Mak-A-Tractor Co.

Flags and Poles

J. Oliver Johnson, Inc.
Stumpp & Walter Company

Flexible Steel Mats

J. Oliver Johnson, Inc.
Stumpp & Walter Co.

Greens Mowers

Pennsylvania Lawn Mower Works
Toro Mfg. Company
Golf Course Supply Co.

ADVERTISER'S INDEX

| | |
|--|---------------|
| ABC of Turf Culture..... | Back Cover |
| Bayer Company..... | 11 |
| Bestivall Mfg. Company..... | 15 |
| Biglow Company..... | 34 |
| Buckner Mfg. Company..... | 18 |
| Carrier, Lyman, Inc..... | Outside Cover |
| Dreer, Henry A..... | 32 |
| Du Pont de Nemours, E. I., & Co..... | 4 |
| Fate-Root-Heath Co..... | 32 |
| Fraser's International Year Book..... | 20 |
| Golf Course Supply Company..... | 26 |
| Henderson, Peter & Co..... | 16 |
| Horner, R. S..... | 32 |
| Hubbard Nurseries..... | 28 |
| Hyper-Humus Co..... | 34 |
| International Seed Testing Laboratories..... | 32 |
| Johnson, J. Oliver, Inc..... | Back Cover |
| MacGregor Compost Distributor Co..... | 24 |
| Miller, Wendell P..... | 23 |
| Milwaukee Sewerage Commission..... | 16 |
| Mitten, L. F..... | 26 |
| Nelson, L. R. Mfg. Company..... | 28 |
| Pennsylvania Lawn Mower Works..... | 14 |
| Philpott Rubber Company..... | 25 |
| Radwaner, I. L. Seed Co..... | 30 |
| Reade Mfg. Co..... | 25 |
| Republic Rubber Co..... | 24 |
| Scott & Sons Co. O. M..... | 28 |
| Staude, E. G., Mak-A-Tractor..... | 22 |
| Stumpp & Walter Co..... | 12 |
| Toro Mfg. Co..... | Front Cover |

PATRONIZE YOUR ADVERTISERS
They make this Greenkeeper's Magazine possible

Green Roller

Stumpp & Walter Company

Hole Cups

J. Oliver Johnson, Inc.
Stumpp & Walter Co.
Golf Course Supply Co.

Horse Drawn Mowers

Pennsylvania Lawn Mower Works

Hose

Republic Rubber Company
Philpott Rubber Company

Humus

Hyper-Humus Company

Lawn Mowers

Pennsylvania Lawn Mower Works
Toro Manufacturing Company
Stumpp & Walter Company

Lawn Sweepers

Stumpp & Walter Company

Lawn Trimmers

Pennsylvania Lawn Mower Works

Mole Traps

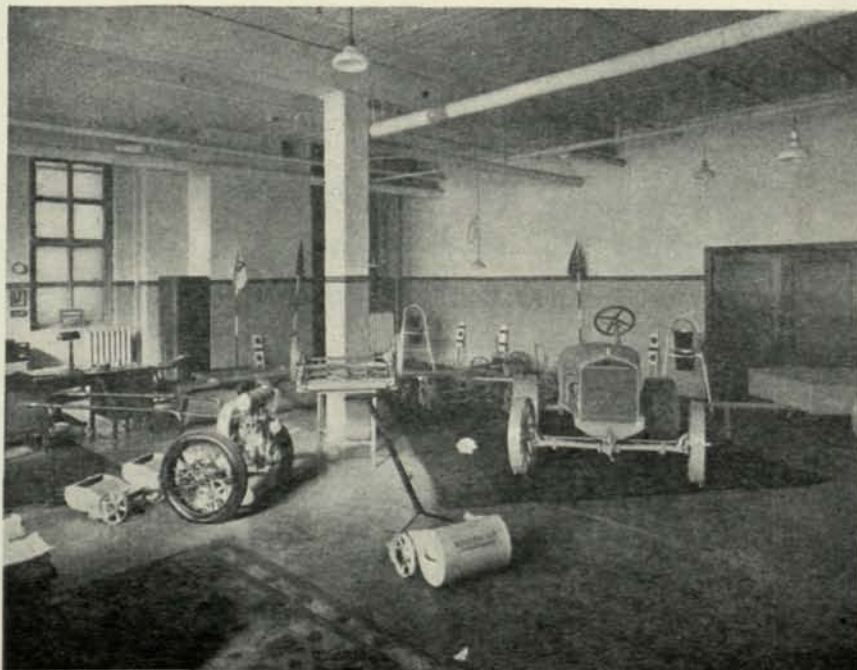
J. Oliver Johnson, Inc.
Stumpp & Walter Company

Mowing Equipment

E. G. Staude Mak-A-Tractor
Toro Mfg. Company
Pennsylvania Lawn Mower Works

Mower Sharpeners

Fate-Root-Heath Company
Toro Manufacturing Company



The Worthington Mower Company's showroom at 517 S. Laflin St., Chicago
John C. Dee representative in charge is very popular with the greenkeepers of the Chicago district

Power Mowers

Toro Mfg. Company
Golf Course Supply Co.

Putting Green Mowers

Toro Mfg. Company
Pennsylvania Lawn Mower Works

Rakes

Pennsylvania Lawn Mower Works
Stumpp & Walter Company

Rodenticides

The Bayer Company

Rough Mowers

Toro Manufacturing Company

Seed

Peter Henderson Company
I. L. Radwaner Seed Company, Inc.
O. M. Scott & Sons
Lyman Carrier, Inc.
Golf Course Supply Company
Henry A. Dreer

Seed

J. Oliver Johnson, Inc.
Stumpp & Walter Company

Seed Disinfectants

The Bayer Company
E. I. Du Pont de Nemours & Co.

Sod Cutters

J. Oliver Johnson, Inc.
Stumpp & Walter Company

Sprinklers

L. R. Nelson Mfg. Co.
Buckner Mfg. Co.

Sprinklers and Sprinkling Carts

Reade Mfg. Company

Tractor

R. S. Horner
E. G. Staude Mak-A-Tractor Co.
Toro Mfg. Company
Pennsylvania Lawn Mower Works

Tee Mowers

Toro Mfg. Company
Pennsylvania Lawn Mower Works

Tractor Wheels and Spuds

R. S. Horner

Water Systems

W. A. Buckner Mfg. Company

Worm Eradicators

Reade Mfg. Company

Audels Guide

An interesting series of booklets designed especially for gardeners and growers, has just been issued by the Theo. Audel & Co., 65 West 23rd St., New York City. This series is issued in four volumes—the first of which is devoted to Soil Management, which is of particular interest to greenkeepers.

The author is Edward C. Vick, son of James Vick, a distinguished educator in the fields of agriculture and horticulture. In his first volume of this series of booklets he discusses the origin and nature of the soil and follows with an interesting chapter on soil life, which describes the action of the bacteria on plant growth.

Several chapters are devoted to the questions of irrigation and drainage which are illustrated with interesting and instructive drawings. Then follow some chapters on fertilizers, particularly nitrogen sources and phosphate. There is also a chapter on potash, which is required for starch formation in plants, and a chapter on the chemical fertilizers, and how plants use food. The author lays particular stress upon the action of bacteria in the soil and has an entire chapter entitled, "Bacteria's Work as a Fertilizer."

This booklet is very interesting from every angle and as a sample of the concentrated information it contains we publish herewith a table showing the nitrogen content of various fertilizing material.

| | |
|------------------------|--------------|
| Stable Manure | 10 lbs. |
| Bone, raw | 60 to 80 " |
| Tankage, general range | 80 to 200 " |
| Fish, dried and ground | 120 to 180 " |
| Blood, dried, black | 120 to 180 " |
| Cottonseed meal | 140 to 160 " |
| Tankage, concentrated | 200 to 240 " |
| Hoofs and horns | 200 to 300 " |
| Meat scraps | 260 to 280 " |
| Blood, dried, red | 260 to 300 " |
| Nitrate of Soda | 300 to 320 " |
| Calcium Nitrate | 320 " |
| Sulphate of Ammonia | 400 " |
| Leunasalpeter | 520 " |
| Urea, BASF | 920 " |

New Pittsburgh Supply House

We have just received notice of the opening of a new Pittsburgh supply house called the Golf Equipment Company. It is located in the House Building, Pittsburgh, with a repair shop at 2428 West Liberty Avenue.

The Golf Equipment Company is operated by A. H. Krigger and F. L. Huseman and handles tractors, mowers, rollers, sprinklers, hose,

Greener Greens

HYPER-HUMUS

"The Soil Essential"

Outstanding Qualities

7

1. Holds Moisture
2. Encourages soil life
3. Corrects soil texture
4. Prevents soil leaching
5. Increases soil temperature
6. Improves compost mixture
7. Restores lost organic matter

To make a perfect top-dressing, mix sharp sand, good top soil and Hyper-Humus, equal parts by volume.

Write for prices and "Soil Improvement" Booklet

HYPER-HUMUS COMPANY
48Park Pl. Newton, N. J.

Hyper-Humus

TRADE MARK REGISTERED
"Puts the Top in Top Soil"

seeds, fertilizers, etc. In their West Liberty shop they repair and rebuild tractors and mowers and furnish service to their customers.

Messrs. Krigger and Huseman have been handling various lines of industrial and contractors' equipment for the past ten years and are well acquainted in the Pittsburgh district.

Bestivall—A Plant Food

Bestivall is a product of quick assimilation, making it an economical and effective agent for fostering plant growth. It is a finely pulverized fertilizer, purely organic and high in availability of its chemical contents. Its analysis shows 7% ammonia, 3 to 5% bone phosphate of lime and 1 to 2% potash. This high analysis means big returns from small applications, saving work and conserving cash. One of America's foremost chemists pronounces the advantages of Bestivall equal to those of Peruvian guano.

Bestivall, so the makers claim, must not be associated with any so-called commercial or complete fertilizer. It is more than that, as it possesses a very large proportion of rich raw manure. This is especially valuable for stimulating bacterial action in the soil, making additional plant food available.

Full particulars covering this product may be obtained from the Bestivall Mfg. Co., 1900 South Delaware Avenue, Philadelphia, Penna.



Delivered prices quoted
on request

The E. BIGLOW Co.
DEPT. G. NEW LONDON, O.