



*Two views of beautiful Pebble Beach Country Club. Upper shows Number 9 green, and the lower Number 8*



# The NATIONAL GREENKEEPER

*Official Organ of The National Association of Greenkeepers of America*

Published monthly at 405 Caxton Building, Cleveland, Ohio.

Contents copyright, 1927, by The National Greenkeeper, Inc., Publishers.

All Rights Reserved—None of the contents of this magazine, either wholly or in part, may be reprinted in any other magazine.

VOLUME I.

No. 8.

## *Brown-Patch at Pebble Beach*

By JOE P. MAYO, Greenkeeper

Pebble Beach Country Club, Pebble Beach, California.

ON an average, we have no rainfall for periods of seven months, and therefore we are very dependent on a good watering system. We follow the policy of early morning watering, and although this has been done consistently for five years, we still have brown-patch.

We are troubled with this disease more on slight knolls and slopes facing south, and I agree with Mr. Monteith about moisture and temperature. We have mushrooms every month in the year, also brown-patch, and they come together. We have an average temperature of around sixty winter and summer. We can have our steaks covered with mushrooms all the time,—that is, of course, if we have the steaks. I have had a few large brown spots, but not in the last three years, all of the small.

### *Bi-Chloride of Mercury as Preventive*

Five years ago when I first came to Pebble Beach we had worm casts, and I used bi-chloride of mercury at least once a month in solution, and I remember of no brown-patch. When the late Professor Piper was here I remarked about not having any brown-patch. The next year I used one of the powdered worm killers and brown-patch showed up. I think that is the reason that some of the older greenkeepers who have always used corrosive sublimate never had brown-patch.

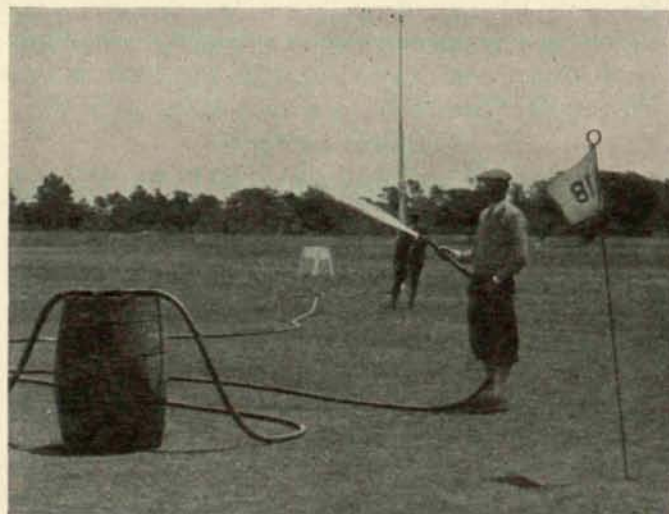
We are using corrosive sublimate at least once a month now for angle worms and brown-patch, and it is working fine except in the winter. Last winter was very wet and we could not use anything dissolved in water, and it was too wet to top dress, so just had to get along with a few spots, but I used some powdered worm killer for angle worms winter before last. We had to water greens part of the time, "not enough rainfall" and the corrosive sublimate worked fine.

### *Using Special Chemical Distributor*

I have not tried calomel, but will as soon as I use up my supply of corrosive sublimate. I apply it in solution, also sulphate of ammonia. The accompanying photo of operation shows the syphon or distributor. It is one I have been using for three years, fool-proof. It puts on the barrel of mixture with five to ten barrels of water from hydrant according to the nozzle we use on end of hose.

We use 10 to 14 ounces of corrosive sublimate (according to size of green) to ten barrels of water. That is about as strong as we can put it on without turning green slightly brown. The last two months we have been mix-

*(Continued on page 39)*



*Joe P. Mayo using his special proportioning machine at Pebble Beach*



# JOHNSON'S SPRINKLING CART



Valve operated from handles  
Price \$35.00

# SEED

# FERTILIZERS

Ammo-Phos  
Poultry Manure  
Sulphate Ammonia  
Milorganite  
Urea

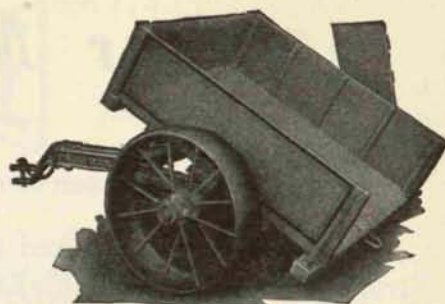
# TORO EQUIPMENT

# BUCKNER SPRINKLERS

# BOSTON HOSE

# SEMESAN

# JOHNSON'S DUMP CART



Price \$90.00

*We have a stock of UREA*

**J. OLIVER JOHNSON Inc.**

*The world's largest Golf Course Equipment House*

Morgan-Huron-Superior St.

CHICAGO

# Pebble Beach

*(Continued from page 5)*

ing the sulphate of ammonia and corrosive sublimate and putting them on together with good results, but changed from once a month to twice a month. The watering of our greens every morning leached the chemicals out in less than a month. We cut down on the sulphate of ammonia from 20 pounds on an average green to 10 pounds and the corrosive sublimate remains the same, just as strong as the green will stand it. I think that we will be able to use calomel and broadcast it in the winter, and will look forward to the time that we can control brown-patch, summer and winter.

# Changed to FAIRWAY after Exhaustive Comparisons!

"We are very much pleased with the 3,000 feet 1" Fairway recently purchased. On the strength of an actual test with seven or eight other brands of Hose we changed the piping of our entire water system so as to use 1" Fairway. In the test other Hose burst at 70 and 80 pounds water pressure and the pressure was run up to 100 pounds and better on Fairway and it showed no signs of weakening anywhere."



**THE REPUBLIC RUBBER CO.**  
Youngstown, Ohio

# Since 1875 TESTED Radway's SEEDS

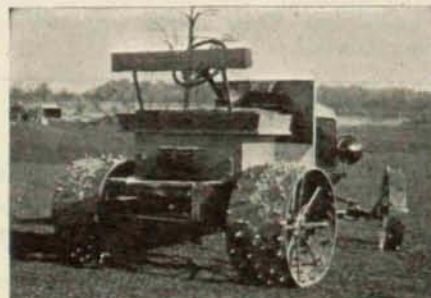
*We have on spot new crop*  
CHEWINGS FESCUE N. Z. 99%  
BENT GRASS SO. GERMAN  
BLUE GRASS — RED TOP — WHITE CLOVER

*Ask for Sample Offers*  
**I. L. RADWANER SEED CO., Inc.**  
11 WATER STREET NEW YORK  
Phone Bowling Green 3373  
*Seed Importers and Refiners*

# The R. H. TRACTOR

Designed by a  
Golf Course Mechanic

P  
O  
W  
E  
R



6  
S  
P  
E  
E  
D  
S

R. S. HORNER, Mfr. GENEVA, OHIO  
Manufacturer of R. H. Square Shoulder Tractor Wheel Spuds  
also Wide Tired Wheels, Radiators, Pulleys for Ford Trucks.  
Circulars and Prices on Request.