

# Turfgrass Matters



October 1993, vol. 45, no. 8

Mid-Atlantic Golf Course Superintendents Newsletter

## MAAGCS Annual Championship Tourney to be held at Caves Valley GC October 12

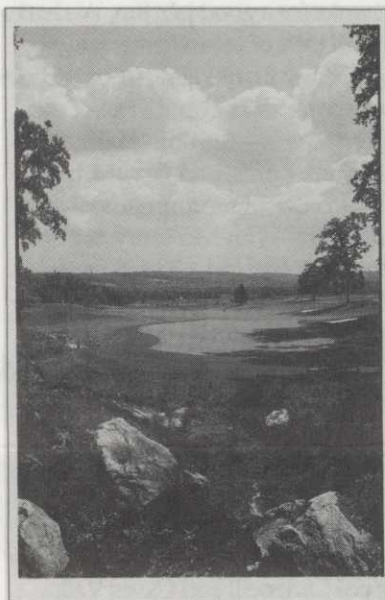
The MAAGCS Annual Golf Tournament will be held at Caves Valley Golf Club on October 12, with superintendent Bruce Cadenelli as host.

Caves Valley is a private club set on 962 acres of pristine valley and forest land in Maryland's hunt country. The 18-hole course is 6,942 yards with a par of 71. The short course, composed of two par 4s and a par 3, is used for practice and warming up. "The consortium that established [Caves Valley] wanted to create a course so extraordinary that Baltimore would be renowned in golf for this one facility much as it is for Fort McHenry, Johns Hopkins University and the National Aquarium," reported Dick Slay in the Washington Times. "The founding investors...envisioned...a golf reputation someday equaling that of Pine Valley, Cypress Point, Laurel Valley or Augusta National."

Opened for play in July, 1991, the club presently has 300 members with an ultimate goal of 450. Caves Valley is national in scope so membership comprises local, regional, national, corporate and international members.

Designed by Tom Fazio, the course is very traditional in nature. Many holes were carved out of mature forest and, therefore, has the look and feel of being older than it really is.

Greens and tees are Penncross Bentgrass, currently overseeded with Southshore and SYN-3.



Caves Valley, Hole No. 9

Fairways are seeded with a bentgrass mixture of 40% Cobra, 40% Penneagle and 20% Penncross.

Greens are cut daily at 9/64". Normal speed is 9.5 feet, but double cutting is done for special events to increase speed to 10.25 to 10.5 feet.

Tees and collars, which are hand-mowed, are cut three times per week at a height of 3/8". Fairways and approaches, mowed three to four times per week, are cut at 1/2". A combination of triplex and lightweight 5-gang mowers are used for this task.

"We grow approximately 40 acres of fescue roughs mixed with Indiangrass and Little Bluestem," notes Bruce. "These areas are left

natural and only mowed and fertilized once a year. The Indiangrass and Little Bluestem are presently in bloom, so the contrast is quite impressive." But, warns our host, "It is very difficult to advance a ball from these areas, so as you play the course, steer clear of these grasses!"

See *Caves Valley*, page 8, col 3

### Golf, Lunch & Dinner

For this month only, lunch, golf and dinner are inclusive, Class A members must sign up for all three. Cost: \$130 and \$10 golf fee.

#### Schedule:

11:00 a.m. - Arrival, Short Course and practice range will be open.

Noon - Buffet Luncheon

1:00 p.m. - Shotgun start

5:45 p.m. - Putting/Long Drive contest

6:30 p.m. - Cocktail Party

7:15 p.m. - Dinner

9:15 p.m. - Coffee/Cookies

9:30 p.m. - Presentation of Prizes

#### Reservations:

Just for this time, the reservation book is not in effect. You *must* call Bill Shirk for *both* golf and dinner: 410-827-7518.

#### Directions:

From D.C.: Take I-95 or 295 from the D.C. Beltway. Take I-695 N/W toward Towson/Pikesville. Take Exit #21, Park Heights Ave./Stevenson Rd. North. Follow signs to Park Heights Ave.—North Route 129. Stay on Park Heights Ave. approximately 4.5 miles. Caves Valley GC is on the right, 1/4 mile above the intersection of Caves Rd. & Park Heights Ave.

## USGA/Audubon Guide to Landscape Naturalization Now Available

Here's a comprehensive resource guide to naturalization: the *Landscape Restoration Handbook*. Benefits it cites are lower maintenance, chemical reduction, water quality improvement, erosion reduction, ecosystem protection, and plant and animal species diversity.

Published by the USGA and the N.Y. Audubon Society, this handy guide provides an extensive list of scientific and common plant names associated with ecological communities throughout the U.S. Also covered in each listing are plant type, environmental tolerance, aesthetic codes, wildlife value, color, bloom time, and landscape uses.

For further information or to order contact Lewis Publishers at 800-272-7737 or the USGA at 800-336-4446.

## Ciba, from page 5

points as follows:

1 GCSAA seminar—4 to 24 points, depending on the cost of the seminar.

1 Golden Tee Club donation (in superintendent's name) to GCSAA Scholarship & Research—4 or more points.

1 *Turf & Ornamental Chemicals Reference* (1993 ed.)—4 points

1 Disease Detection Kit—3 points

1 Superintendent's Spray Program—4 points

*Note: Deadline is October 11 so don't delay; \$375 has been donated to MAAGCS Education from Ciba-Geigy and much more is possible if you participate. \* \* \**

## Did you know that.....

Oxygen production from 55 square feet of turfgrass provides the daily need for one adult.

## Caves Valley, from page 1

Says Bruce, "Caves Valley is at the lead of environmental monitoring on golf courses. We are doing three- and five-year studies on groundwater, stream studies and pond sampling. To date, results are very encouraging. Over the next few years, we should be able to prove scientifically that golf courses, and their practices, are not harmful to the environment.

"Since we are a new club, we are still refining the course. Presently, we have numerous tee construction projects on the drawing board, as well as a fairway construction project for #17. Most work is done in-house, with three to four projects accomplished yearly. Caves Valley has been selected to host the 1995 USGA Mid-Amateur Championship in September of that year.

## **NOW!** Unsurpassed effectiveness and convenience in one pre-emergent weed control product

There's an easy way to apply the toughest, most cost-effective preemergent weed control—pendimethalin—with the convenience of water-soluble packaging. Scotts, Weedgrass Control 60WP\* controls six common sprouting grassy weeds and nine common sprouting dicot weeds. There's no hassle with measuring or container disposal for a truly user-friendly ProTurf, product.

Ask your ProTurf Tech Rep for details.



\*Not available in Canada



**QUALITY ASPHALT SINCE 1950**

Cart/Jogging Paths  
Roadways, Parking  
Lots **301-797-6941**

**ASPHALT: Construction •  
Repair • Overlay • Striping •  
Sealcoating • Crackfill**