



# Mid-Atlantic Association of Golf Course Superintendents NEWSLETTER



VOLUME XXXXII

SEPTEMBER 1989

NUMBER 7

## SEPTEMBER MEETING AT SUBURBAN COUNTRY CLUB

The September meeting of the Mid-Atlantic Superintendents Association will be held at the Suburban Country Club on Tuesday, September 12, 1989. Your host, Bob Miller, along with golf professional Mark Helfrich and club president William Rosenthal, invite you to a day of good golf and food.

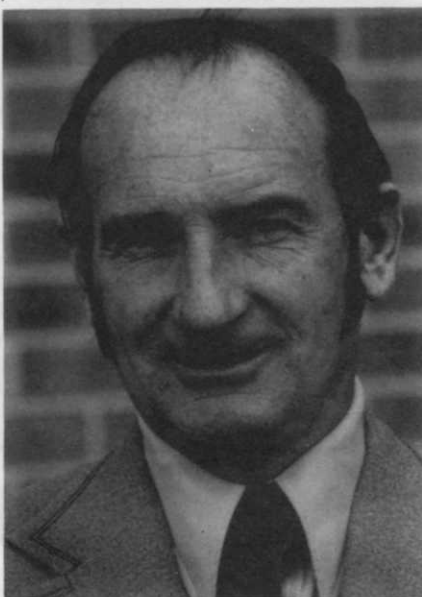
The Suburban Club was founded in 1901 and is located at 7600 Park Heights Avenue, south of the Baltimore Beltway at exit 21. The club has undergone quite a few changes in the design and construction of certain holes in the last 25 years.

The golf course measures 6,240 yards from the white tees with a slope rating of 121. From the blue tees, the course measures 6,497 yards with a slope rating of 124.

Bob has been on the Pre-M program on fairways for the past 3 years. The program is used every fall at the 2 lb/acre rate using 1 lb in September and 1 lb in October. Fairways are seeded with perennial rye at the rate of 150 lb/acre with a drill seeder every fall. The fairways are also fertilized 4 times a year. This year, for the first time, the fairways have been sprayed on a regular basis. As a result, the membership has noticed a better quality turf on the fairways.

The fairways have automatic irrigation with the exception of 5 holes. Later this year, Bob and his crew will convert these fairways to automatic irrigation.

The greens are mowed 6 times a week at 5/32 inch and fertilized 5 times a year. For crabgrass control, Scotts goose and crab material is applied every spring at the rate of 2½ lb/1000. For the first time, a verti-drain was used on the green producing very good results. Some of the greens at Suburban have a tendency to hold anywhere between 3 inches and 7 feet of water after a rainstorm of 2 inches or more. This year has been a real test with the amount of rain received this year. The greens are sprayed on a regular



*Our Host, Bob Miller, C.G.C.S.*

basis using a combination of the many chemicals available.

The tees are mowed 3 times a week and treated with fertilizer and chemicals using the same program as the greens. Bob is in the process of converting all of the tees to bentgrass.

The green committee, chaired by Dr. Felix Kaufman, is now implementing a tree planting program for the entire golf course. The plan calls for special plantings of various hardwoods and pines near old and strategic trees to provide screening around the property line.

Our host, Bob Miller, has been at the Suburban Club for 25 years. He attended night turf courses at the University of Maryland and passed the GCSA certifica-

tion examination in 1975. Bob has been a member of the GCSA and the MAGCSA since 1965.

Bob and his wife Donna have 3 children. The oldest, Tom, is a sergeant in the U.S. Army and is currently stationed in Panama. He and his wife, Suzie, have one son, Tommy, Jr. Their daughter Debbie, is married to Jim Sergi, who is a carpenter and also works on the weekends helping Bob maintain the golf course. Debbie works for Noxell Construction in the Sales Department. The youngest, Bob, Jr., is a carpenter and still resides in the Pikesville area. Hobbies for the Miller family are golf, swimming, and traveling the East Coast visiting relatives.

General Manager, Neal Griswold will have a lunch set up at 11:30 for those playing golf. The cost for lunch will be \$6.00. Between 6:00 and 7:00 pm, there will be a cash bar. At 7:00 pm, dinner will be served. The cost for dinner will be \$25.00. For those wanting to play golf, you can tee off anytime after 11:00 am.

**Directions to the Suburban Club:**

*From the south:* Route 695 north to exit 21. At the top of the ramp, bear right onto Park Heights Avenue. Go south until you get to the club entrance which is on the right side of the road. Once on Park Heights Avenue, you will pass the Druid Ridge Cemetery on the right side of the road and a four way traffic light. From the traffic light, you can see the golf course straight ahead on the right side of the road.

*From the north:* Route 695 south to exit 21. At the top of the ramp, turn left onto Stevenson Road. Stay on Stevenson Road until you reach the third traffic signal. This is a four way traffic signal. You will need to turn left at this signal onto Park Heights Avenue. Remain on Park Heights Avenue until you reach the club entrance on the right side of the road. From the traffic light which you will turn left, you can see the golf course straight ahead on the left.

**RESERVATIONS**  
**(301) 381-0030**