



Mid-Atlantic Association of Golf Course Superintendents NEWSLETTER



VOLUME XXXXII

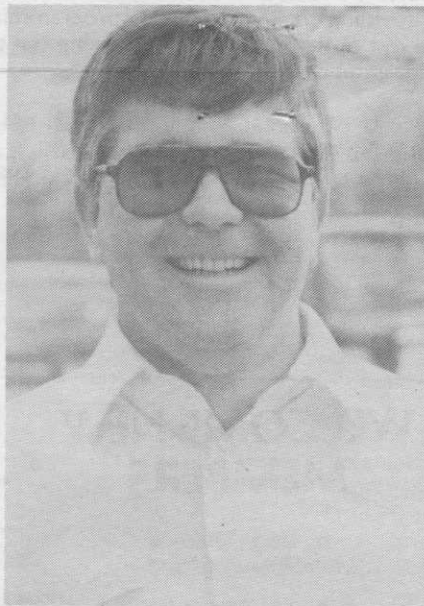
MARCH 1989

NUMBER 1

MID-ATLANTIC — U.S.G.A. JOINT MEETING, MARCH 14, CHEVY CHASE C.C.

Our March meeting will be an all day affair as you can see by the enclosed program. We are pleased to cooperate with the U.S.G.A. in this effort. In the past there has been a scheduling problem with this event, please come and help make this first joint regional meeting a success. Because this is a joint meeting and there will be an all day program there will be no golf at this meeting. The Association's part of the meeting will begin with a social hour at 5:00 p.m. and dinner will follow at 7:00, cost \$20.00. Our speaker will be Pat Schrepf of Hall and Kimbrell, Environmental Services. His topic will be "Environmental Self Audits." Our policy of calling in for reservations remains the same. Please call the Mid-Atlantic office before Friday with your dinner reservations. The number is (301) 381-0030 — call now!

Our member host for the day will be our immediate past president George Renault. George has been Superintendent at Chevy Chase since March 1983. He was a student of Doug Haas at the University of Maryland where he attended the Institute of Applied Agriculture. He graduated in 1973. George's dad (George Renault, Jr.) is an old friend of the Mid-Atlantic. He attended many meetings back in the 60's when he was green chairman at Fort Belvoir Golf Club. He and Tom Doerer had a great relationship. It was in fact Tom who first introduced young George to golf course maintenance as a member of the crew at Belvoir. George worked as an assistant at Springfield C.C. and moved to Goose Creek C.C., Leesburg, Va. in 1977 as the Golf Course Superintendent. He left to move to Penderbrook C.C. as the Superintendent. He was in charge of supervising the construction and opening of the new facility. George became a certified superintendent in 1982. A well organized, innovative, and competent young man, he is a real asset to our profession and our association. George and his wife Cindy and their two children live in Vienna.



George Renault

Cindy is working in the home now and taking a break from her own career as the office manager at the I.T.T. Washington office. The children, George IV, 11 and Lucy, 7, attend Louise Archer Elementary School in Vienna. Both of the kids are active in sports. George plays soccer, hockey, and basketball; Lucy is a gymnast. When at home from the Club, our host can be found in his hot tub relaxing, or working in his yard. He says his long range goal is to have no grass at all to mow. George's hobbies include skiing and golf. He's been a member of our golf team for the last few years.

A few items on the maintenance of the course follow: The greens are mowed during the season six times a week at 9/64 with wiehles. They receive 3 pounds of nitrogen a year in a 3-1-2 ratio. George has been treating the greens with TGR for the past four years. The tees are mowed at 7/16 three times a week and receive two to two and a half pounds a year. They are as George describes a Dukes mixture, he

just over seeded them last fall with Penn-cross Bent. The fairways are over seeded with perennial ryegrass. They are mowed at 5/8 of an inch three times a week. The greens, tees, and aprons are on a preventive fungicide program. The fairways receive an application or two each season. The main crabgrass control at the club is post-emergence, with applications of Acclaim.

The Chevy Chase Club was organized on December 10, 1892, incorporated on April 17, 1893 and golf was introduced in 1895. A six hole course was laid out with some help from some members from Washington Golf Club. The following year a new nine hole layout was built. In 1898 an additional nine holes was added along with some improvements to the existing nine. Upon completion of the course the club became a member of the U.S.G.A., in December 1898. In 1909 the Club acquired the land where the course is now located and Donald Ross, architect, directed the construction of the new nine hole course. The second nine was built the following year. By 1921 the popularity of golf had grown to the extent that the board of directors approved the rebuilding of the golf course. The eminent Scottish architects Colt, Mckenzie and Allison were given this assignment. The new course was completed in 1923, with few and minor alterations, the course remains basically the same today. It plays to 6184 yards from the white tees, and is rated as a par 70.2, slope 125. Score card par is 69.

Directions: Take I-495, Capital Beltway, to Connecticut Avenue exit. Exit south towards Chevy Chase/Washington (inside Beltway) approximately 2 miles to club on right.

RESERVATIONS
(301) 381-0030