

Mowing at the Speed of Light

New Future Tech Mower Unveiled at Trade Fair in Cologne, Germany

It had to happen. For years, people have predicted that someone would find a way to use lasers to cut the grass. One major obstacle was the development of a power supply small enough to be part of a mower.

Now, a German company says it has developed a lawnmower that eliminates the blades and slices grass by laser, chopping it into a fine mulch. They say maintenance should be limited to wiping off the laser 'eye' after each mowing session.

Wolf, a maker of traditional lawnmowers, developed the new mower on the chassis of a Mercedes Smart cabriolet, a two-seat convertible. The unit is apparently powerful enough to be registered for road use, and would cost \$30,000.

The cost is expected to go down in future production models. "It's a bit like color TVs when they first came out," said Juergen Goos, designer of the mower, which has leather seats, Internet access and a computer to control the



Photo courtesy of WOLF Garten GmbH, Betzdorf, Germany

laser beams.

The company unveiled the Zero mower at a gardening and recreation fair in Cologne, Germany. If there's enough interest by dealers, it will go into production for the year 2002.

QUALITY SUPPLIER OF TURF

- **Washed** and Regular Turf (Sod) in 1½ yd. or up to 55 yd. Big Roll Size (42" Wide)

TURF TYPES:

- ELITE KENTUCKY BLUEGRASS BLEND
- SPORTS TURF
BLUEGRASS/P. RYEGRASS BLEND
BENTGRASS



MEMBER

NCTGA	MGCSA
MSTMA	WTA
SDGSA	ISTMA
MTGF	TPI

8651 Naples St. N.E.
Blaine, MN 55449

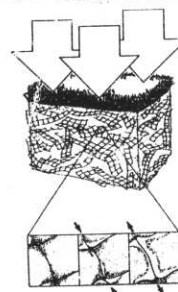
QUALITY CONSTRUCTION & RECONSTRUCTION

- *Golf Courses*
- *Sports Fields*



NETLON® ADVANCED TURF SYSTEMS

Self-Cultivating means healthier turf and better drainage.



NETLON® MESH ELEMENTS AND MIXES

For Compaction Resistance on cart paths, sports fields and other high use areas.

For Quality Construction & Nelton® Products Contact:
(612) 784-0657 • FAX: (612) 784-6001

For Quality Turf Contact:
(612) 674-7937 • FAX: (612) 674-7044