

*Quick on
Quick off...*

Jacobsen

**GREENS
MOWER**

22-Inch Cutting Width

- 2 1/4 hp. Jacobsen "Hi-Torq" Engine.
- Transport wheels and sulky can be attached or detached in seconds without tools.
- Perfectly balanced, precision-built, 9-blade reel.

Rapid transport from green to green, coupled with the finest, precision greens cutting, has made Jacobsen Greens Mowers the choice of greenskeepers and superintendents everywhere. "Quick on, Quick off" transport wheels and riding sulky let you travel faster, thus freeing trucks and personnel for other work.



JACOBSEN MANUFACTURING COMPANY

Department G6 Racine, Wisconsin



TURF INSECTS with proven CHLORDANE

White Grubs, Cutworms, Ants, Chiggers, Earwigs, Chinch Bugs, Mole Crickets, Japanese Beetle Larvae, Sod Webworms (Lawn Moths) . . . Chlordane kills all of them . . . and prevents mole damage. That's why you can't go wrong with Chlordane . . . it helps keep turf green and healthy, a credit to your good management, all summer long.

To help give your greens and fairways the "cared for" look, use Chlordane to kill turf insects.



Velsicol Chemical Corp.
330 East Grand Avenue
Chicago 11, Illinois

Please send me your new FREE Lawn and Garden Insect Folder, and Turf Insect Folder.

NAME _____
STREET _____
CITY _____ STATE _____

G-66

Pequabuck GC, Terryville, Conn.

Frank McMullen, now in his first year as pro-supt., Normanside CC, Albany, N. Y., was private pro for the late Otto Kahn at Kahn's estate course on Long Island, from 1927 to 1935 . . . Remember when there were many private courses on millionaires' estates and good jobs for pros and greenkeepers? . . . Now, offhand, I can't think of one of these deluxe private courses still operating . . . Do you know of any?

John J. O'Donnell from Sewell's Point GC, Norfolk, Va., succeeds Irv Schloss as pro at Baltimore's Mt. Pleasant muni course . . . Schloss resigned to take it easy for a year, after a heart injury . . . When pro operates the golf shop there's no 20 per cent government tax on club cleaning and storage . . . That tax applies when the club operates the shop, advises tax accountant for Buck Luce, Sands Point (N.Y.) pro.

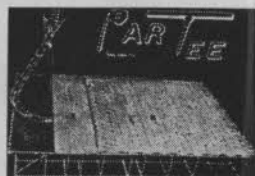
Martin Lyons back in NY Met dist. as mgr., Sands Point CC . . . Talk of building 9-hole course at Lock Berlin for golfers of Lyons, Clyde and Savannah, N. Y. . . . Wm. E. Novatny named pro-mgr. of the new muni course at Bethlehem, Pa. . . . Very few Calcutta pools at invitation tournaments of first class clubs this year . . . USGA letter to member clubs advising

Leads Them all — On It's Record!

PAR-TEE

The Proven Automatic Tee

No other
golf tee
approaches
its 20 year
record of —
continuous, dependable service



For 20 years — made, sold and serviced by PAR, Inc. For 20 years — hundreds of PAR-TEEs in continuous use, and still the most modern tees, with lowest upkeep and unflinching performance. No other tee has as many years of use as the PAR-TEE. That's the record behind PAR-TEEs. Complete with driving and standing mat — ready for use in a jiffy. Available for rent or for sale.

PAR-INC.

860 East 75th Street • Chicago 19, Ill.

Telephone: STewart 3-2400

*Robert A. Moore, Vice President,
Aquatrols Corporation of America,
discusses important golf course
applications for Aqua Gro.*

Localized Dry Spots become a major problem during these hot dry summer months. I don't know how many size 14 shoes pound your turf from early morning till night, but I do know the increased traffic aggravates your maintenance of these areas. Deep and rapid watering of turf is a continuing maintenance problem. Many times areas are not uniformly watered because of Thatch, Hard Spots, Slopes and Compaction.

Laboratory and field tests have proven beyond doubt that Aqua Gro makes water penetrate up to twice as fast and ten times as deep. Water is no longer shed by matted or thatched areas that have been treated with Aqua Gro. Water quickly soaks into Aqua Gro treated banks and slopes. Water penetrates deeper into hard, compacted areas. By making water "wetter," Aqua Gro gives a uniform distribution of moisture throughout the soil.

Water-logging and over-wetness can often be traced to neighboring Localized Dry Spots. In endeavoring to water these areas, a temporary summer labor force often over-waters the surrounding turf. Treat these Localized Dry Spots with Aqua Gro and make watering quicker, easier, and more uniform.

Dew eliminated 'round the clock. (Read independent report, May GOLF-DOM). Aqua Gro adheres to the blade of grass, and reduces the interfacial tension of the dew droplets as they form. The dew droplets can't cling to the blade, but run down the stem into the ground. Aqua Gro saves time . . . labor . . . money . . . pays its own way!

Easy to apply, Aqua Gro mixes readily with water for quick, easy application by any spray or sprinkler equipment. Aqua Gro is compatible with all agricultural chemicals, insecticides, fungicides and herbicides.



**Superintendents
Report After Using**

AQUA-GRO

"Wetter Water Solved Many Turf Problems"

Effects of Thatch Are Cured

Areas suffering from the effects of thatch are cured by one full treatment of Aqua-Gro. Subsequent waterings percolate freely through the thatched areas. Wet without waterlogging. Aqua-Gro is economical, one application costs approximately 75¢ per 1000 square feet.

Effects of Hard Spots Eliminated

The effects of hard spots on greens are eliminated. Treated water penetrates quickly and deeply into the soil. Uniform water penetration in soils reduces tendency to overwet areas next to hard spots.

Dew Eliminated

Periodic application of Aqua-Gro to greens prevents formation of dew 'round the clock. Fungus growth is discouraged. Costs approximately 20¢ per 1000 square feet. A considerable savings over other methods of dew removal.

Deeper Water Penetration

Plugs of earth from compacted, hard-to-wet areas prove water penetrates up to 600% greater depth if areas are treated with Aqua-Gro. More even distribution of water in the soil results in less frequent watering and better control of turf.

AQUA-GRO **COMMERCIAL
CONCENTRATE**

5-Gallon Pail **\$60.00** Freight
Treats 86,000 Sq. Ft. **Prepaid**

Send for Report X-200 giving research data
on use of Aqua-Gro

Aquatrols Corporation of America

730 Lancaster Avenue

Bryn Mawr, Pennsylvania



CUT SHARPENING COSTS with the **IDEAL®** BED KNIFE GRINDER

The Model 50
Ideal Bed
Knife Grinder

is fast, accurate, and inexpensive. Mowers cut better, last longer when bed knives are kept sharp. Tapered cup wheel grinds both edges of any bed knife in one set-up. Improve your turf, cut costs by grinding bed knives on the Model 50, lap the reel in with a Simplex Lapping Machine.

THE FATE-ROOT-HEATH COMPANY

Dept. G-6, Plymouth, Ohio

Write today for full information.

that amateurs participating in Calcuttas would risk eligibility for USGA events was the KO punch.

Start building 9-hole course at Westover Air Force Base, Holyoke, Mass., to plan of Orrin E. Smith . . . John Inglis of Fairview CC elected to presidency of NY Metropolitan section of PGA for 27th consecutive year . . . George D. McWilliams from Hotel Buffalo to manage Oak Hill CC, Rochester, N. Y., National Open host club.

Ben Lord begins his 40th year as pro at Glens Fall (NY) CC . . . Lord gets Tony Fortino, jr., for past six years pro at Ticonderoga (N.Y.) CC, as associate pro . . . Herman Fiebig, owner of the Mason (Mich.) GC, remodels several holes because of sale of property for US highway route . . . Remodelling lengthens course 99 yards . . . Fiebig enlarges clubhouse at his course . . . Lease 140 acres adjoining Navy base at Fallon, Nev., for course.

Ben White, head of the company that has spent \$1 million converting the Commonwealth CC (Boston dist.) into the Boston Town and CC says high operating costs plus operating inefficiency of private clubs will force many of them into

TURF *that Speaks for Itself!*

MILORGANITE HELPS ED. BERARDY GROW DEEP ROOTS AT LAKE MERCED

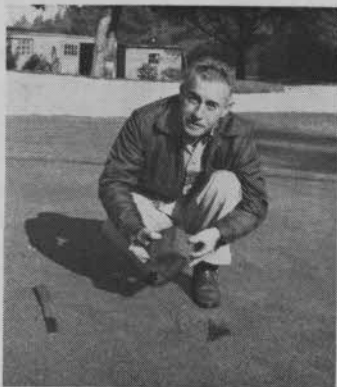
When San Francisco golfers evaluate putting quality, Lake Merced greens rank high — always. Their true-ness and perfect putting quality is a tribute to the skill of superintendent Ed. Berardy.

Milorganite has been used in greens and tees as long as Ed. can remember. His time with the club dates back to early depression years — a quarter of a century.

Ed. Berardy gives Milorganite credit for the deep, dense root systems so necessary for perfect playing surfaces.

Lake Merced was among the first to adopt the heavy duty cyclone seeder for fast, economical Milorganite applications.

If you have a turf problem, consult:



THE SEWERAGE COMMISSION, Milwaukee 1, Wis.

GOLF CLUBS
USE MORE

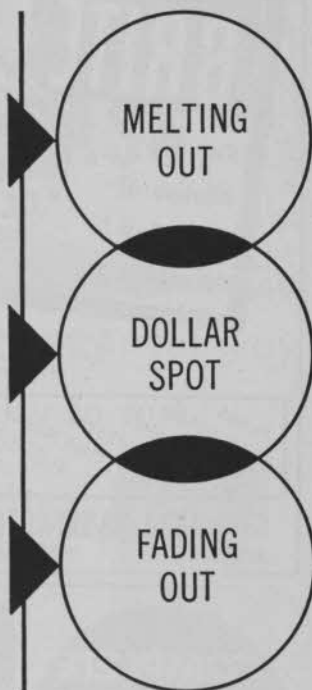
MILORGANITE

THAN ANY
OTHER FERTILIZER

ACTI-DIONE*

FERRATED

Prevents and Controls



ACTI-DIONE FERRATED

IS RAPID IN ACTION... good results
have been obtained in a few hours

SAVES WORK AND EXPENSE... returfing
greens is hard work and is expensive

IS EASY TO USE... no weighing of bulky chemicals
... mixes easily with water ... will not settle-out

For additional information, write:

THE UPJOHN COMPANY
Chemical Sales Department
KALAMAZOO, MICHIGAN

*Trademark, Reg. U.S. Pat. Off.

"BALL BRITE"

For All
Makes of
Golf Ball
Washers

THE
SAFE
GOLF BALL
CLEANER

Write for free sample of
"Ball-Brite" and copy of
1956 Catalog.

FLAGS
FLAG POLES
BALL WASHER
HOLE CUTTERS
PUTTING CUPS
RULE SIGNS
BAG RACKS
MARKERS
ETC.

STANDARD MANUFACTURING CO.
BOX G, CEDAR FALLS, IOWA

corporate ownership and management . . . Grand Rapids (Mich.) Herald runs a bright, informative, illustrated sports section series on West Michigan pros. It's attracting a lot of attention.

Indian Valley GC, Inc., headed by Dr. David B. Rosehill and Robert Nyberg of San Jose, to build 18-hole course at Novato, Calif. . . . Oak Ridge CC, Farmington, Ut., expected to be in play by fall . . . Sid Eliason and Bill Neff are owners; Russ Mears is pro . . . Bill Bell designed the course . . . International Business Machines Corp., building new \$12 million plant at Owego, N.Y., will have golf course among other recreation facilities.

Deaths of youngsters hit by balls and by clubs at courses and ranges this spring threatens a sorry record year of fatalities unless pros and others in charge can protect the kids with close supervision and safety instruction that stays with the youngsters . . . Many thousands of new golfers (of almost all ages) this year increase the danger factor by their ignorance or carelessness . . . Pros have to teach safety more than ever before . . . And more than ever before see that safety laws are continuously enforced.

COMPLETE DOLLAR SPOT CONTROL

PURATURE 177

The original organic cadmium compound

1. Most effective, economical material for dollar spot control.
2. Easy to use—mixes readily with water.
3. Does not harm healthy turf.
4. Also effective against copper spot, brown patch and pink patch.

For those who prefer a liquid fungicide
Gallowhur also manufactures Puraturf #10—a soluble phenyl mercury compound.

FOR ADDITIONAL INFORMATION WRITE:

Gallowhur CHEMICAL CORPORATION
North Water Street • Ossining, N. Y.

Manufactured and Sold in Canada by GALLOWHUR CHEMICALS, CANADA, LTD., MONTREAL, CANADA

di-met selectively

KILLS CRAB GRASS



on green or fairway
without injury to turf

*Southern Courses: DI-MET also destroys Dallisgrass (bull grass), Lemon grass, Sedge in Bermuda Turf.
Southern California: Destroys Dallisgrass (bull grass). Safe on Dichondra.*

Word spread like wildfire last year about the remarkable job done by DI-MET on Courses all over the country.

So selectively does DI-MET work that not a blade of the fine Bent grass of your greens suffers discoloration. Safe, quick-acting, DI-MET kills by leaf and root absorption. Rarely requires more than 2 applications even on 4 to 6 leaf plants. On greens, application should be made as soon as plants emerge. Recommended for use on Merion Blue, Kentucky Blue, Red Top, Fescue, Colonial Bent, Creeping Bent, Bermuda.

Available in concentrated liquid form. Apply with hand or power sprayer or hose syphoning device. Packed in cans —no breakage.

We're producing DI-MET as fast as we can, but the demand is tremendous. Please get your order in early. We'd hate to disappoint you. Call your wholesaler today, or write manufacturer for detailed information.



**Distributors:
Your inquiries
invited!**

O. E. LINCK COMPANY, Inc.
CLIFTON, NEW JERSEY

manufacturers of the original TAT ANT TRAP

Sales Representatives: John H. Graham & Co., Inc.

A Great Water-Saver!

MODEL H
Twin-Jet



DOUBLE ROTARY SPRINKLER

Gets the distance with a single line of water

Double Rotary delivers more water, farther. Won't puddle, pack or ditch. All the water is absorbed as the single line of water rotates . . . reduces your water bills.

Covers up to 6500 square feet with a gentle, rain-like action. Wonderful for new seeding. A simple turn of the faucet regulates circle from 15 to a remarkable 90-foot diameter! Positive action, unaffected by wind.

Finest bronze, brass, steel and aluminum construction throughout. Twin-jet Model H (above) for medium to high pressures . . . **\$19.50** up to 90 feet diameter

Single-jet Model H (below) for low, medium and high pressures . . . up to 80 feet **\$18.75** diameter

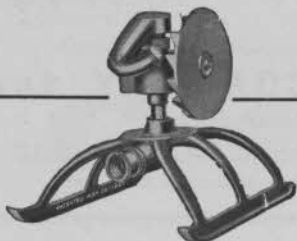
Fully Guaranteed . . . Parts and Service Available

AT YOUR DEALER or WRITE

DOUBLE ROTARY SPRINKLER COMPANY

422 Admiral Blvd.

Kansas City 6, Mo.



Model H
Single-jet

Tommy Armour out after 17 years as pro at Boca Raton (Fla.) . . . during his time there Armour brought notables from all over the golfing world as members and pupils when Boca Raton, under ownership of the Late C. H. Geist was the most luxurious golf club on the planet and when club went on a hotel basis after World War I Armour instruction of amateurs and pros was a big attraction . . . Sam Snead will add Boca Raton pro job in winter to his Greenbrier work the rest of the year.

News of Armour being available brought offers quickly . . . Tommy apparently in no hurry to announce plans, being very well fixed financially and enjoying the summer playing as a member of Winged Foot . . . Johnny Farrell, long at Baltusrol and continuing there, will be winter pro at new Florida CC, Delray Beach, Fla. . . The club will be open the year around and Johnny Farrell, Jr., will be its pro in the summer.

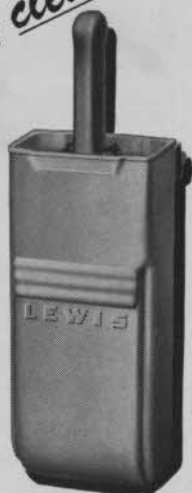
Gene Sarazen will conduct a shot-making clinic Tues., Aug. 7, at Taconic GC, Williams College, Williamstown, Mass., the afternoon before the 9th junior amateur championship of the USGA begins . . .



for a real clean shot

LEWIS Ball Washer

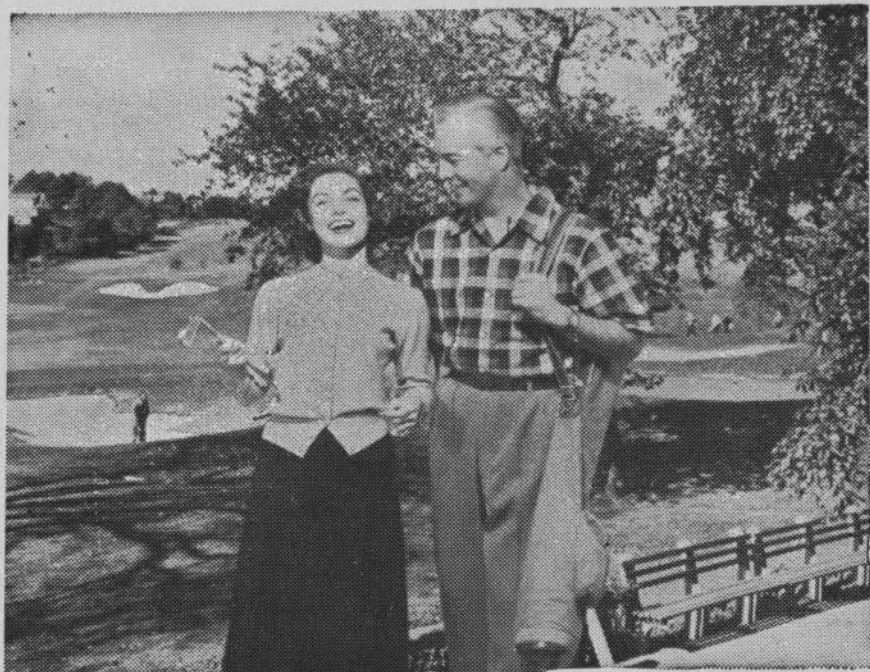
Specially treated paint, sealed and protected with a tough coating of weather-resistant plastic. "Magic paddle action" spins ball to clean every part of the surface.



Service for years — with so little maintenance

CONTAINER DEVELOPMENT CORP.

Watertown • Wisconsin



Keep 'em
SMILIN'

PMAS •

The **DOUBLE ACTION** Herbicide/Fungicide kills Crabgrass and prevents and controls Dollar Spot, Small Brown Patch, Copper Spot, Snow Mold and Helminthosporium Curvularia.

spotrete

A dry 75% THIRAM material to control and prevent Large Brown Patch, Dollar Spot and Snow Mold. It is compatible with PMAS for application in hot humid weather when the threat of turf disease is most prevalent.

W. A. CLEARY CORP.
NEW BRUNSWICK, N. J.

**CLEARY
PRODUCTS**
for
**BETTER
TURF**

Caddy

... is LIQUID Cadmium for the prevention and control of Dollar Spot, Copper Spot, and Pink Patch. Quickly mixed it stays in suspension until entire tank is discharged.

METHAR

METHAR (75% Disodium Monomethylarsonate) has been found to give highly effective crabgrass control. Its ease of mixing and low level toxicity merit its addition to the well planned control program. Packed in 25 lb., 50 lb., and 100 lb. containers.

SAVE WORK! SAVE TIME! SAVE MONEY!



Simply add a few gallons of
Campbell's Liquid

GRO-GREEN

with Foliage Dietene

to regular spray solutions and
fertilize greens, tees, fairways,
flowers and shrubbery IN
ONE OPERATION!



It's fast, easy, practical. You save labor, time, money! Because GRO-GREEN—with Foliage Dietene added—mixes quickly, thoroughly with all popular chemicals, for simple "one-stop" spraying. Contains the essential elements nitrogen, phosphorous, potassium plus many enriching hormones, vitamins. Apply as often as needed, for richer coloring, hardier growth, less brown-spotting, lusher fairways, sturdier root systems that take heavier traffic.

Gro-Green is formulated to your specifications—
10-15-5—15-10-5—15-5-5—32-0-0—or whatever
desired, comes in crystal form also.

- **Greens:** Apply with regular sprayer. 1 gal. Gro-Green to 20 gal. spray solution. Covers approx. 10,000 sq. ft.
- **Fairways:** Regular Sprayer. Use 2 gal. per acre with 8 gal. of water.
- **Tees, Shrubby, Flowers, etc.:** Use regular sprayer. 1 gal. Gro-Green to 100 gal. water or use Automatic Gro-Gun on hose.

Sold on money back guarantee.
Mail coupon for FREE details, name of distributor.

H. D. CAMPBELL CO.
Rochelle 14, Illinois

H. D. CAMPBELL CO.
Rochelle 14, Ill.

Please send me FREE DESCRIPTIVE LITERATURE, and Free Samples about Gro-Green.
☐ Desired Formula

NAME _____

COURSE OR CLUB _____

ADDRESS _____

CITY _____ STATE _____

The boys will qualify for the championship in 48 sections, two more than last year . . . Pars, Birdies and Eagles, oldest golf TV program, in its 9th year at Chicago . . . Joe Jemsek and Charley Nash, owners of the "Quality Group" of four semi-private courses, have sponsored the program since it started.

Big ad of patent medicine type in newspapers says it "Reveals Secrets of 5000 golf course supts." . . . Paul Weiss, vp of the Golf Course Supts.' Assn. of America, admits he didn't know that supts. were keeping from the public as many secrets as the ad listed, or any secrets . . . Paul adds that while he can't say much for the ethics of the ad, in some respects he can't kick about having the supts. mentioned as experts.

Milt Woodard, Western Golf Assn. Executive vp, meets with San Francisco Jaycees and others planning \$22,500 Western Open at Presidio GC, Oct. 11-14 . . . John N. Caldwell, pro-supt. for many years at Moila CC, St. Joseph, Mo., retires . . . The annual 4-man team tournament of the Heart of America Golf Course Supts. Assn. has brought the president, green chmn., pro and supt. of clubs around Kansas City together in a handicap competition for eight years.



PART-CIRCLE SPRINKLER

The most

Versatile

Sprinkler ever
built!



Easily set to
water any area,
regardless of shape.

Serves as a full circle, part-circle, and fixed position sprinkler. Can be used with Coupler and BUCKNER Quick-Coupling Valves, installed on permanent risers, or mounted on roller or sled stands for use with hose.

**Consult your authorized
BUCKNER distributor.**



BUCKNER MANUFACTURING CO., Inc.
1615 Blackstone Ave., P. O. Box 232, Fresno, Calif.