

Penn State Marks 10 Years of Breeding *Poa Annua*

By David Huff

It's been 10 years since we first initiated the Penn State greens-type *Poa annua* breeding program. So it seems to be an appropriate time to review what we've learned and what's left to do.

Initially when we started the project we were very cautious and somewhat skeptical. After all, *Poa annua* is considered by many to be nothing more than a weed. However, from each new collection and field plot trial, we learned to appreciate its beauty as turf and its unparalleled ability

to adapt to a range of management conditions. Slowly and steadily our momentum built. It was the golf course superintendents of Pennsylvania, and later those from across the world, who enthusiastically encouraged our efforts and provided our initial financial support.

After several years into the project, major funding from the USGA then elevated this part-time project into a full-time project, where it has been for the past seven years.

The purpose of the breeding program is to develop commercial seed supplies of perennial *Poa annua* f. *reptans* (Hauskn.) T. Koyama for use on golf course putting greens. We call these special types of *Poa* "greens-types" to mark their distinction from the many other types, or forms, of *Poa* that inhabit other turf areas such as fairways, lawns, roughs and utility turfs.

Around the world these different forms are collectively known as annual bluegrass, annual meadow grass (Europe) and by similar names in 20 different languages (Fig. 1).

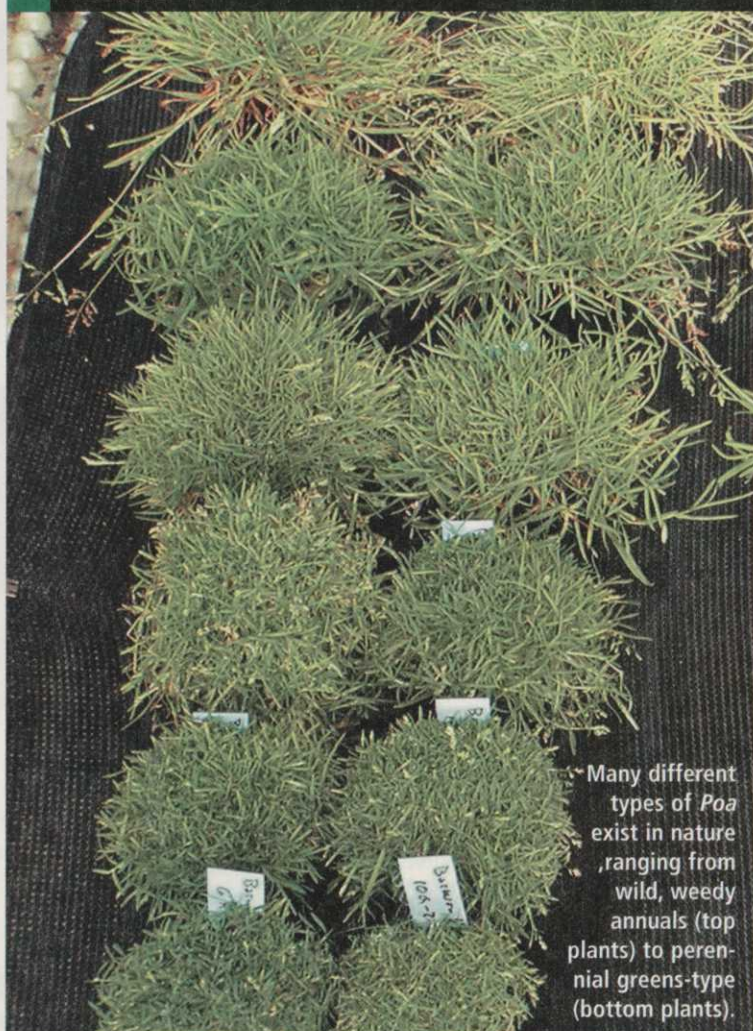
There is no question that *Poa* plays a large role in the golf industry today. This role is particularly noticeable at very old, well-established courses, the kind often featuring U.S. Open events where fast, durable greens present a historical challenge to modern-day golfers.

Poa seems prevalent in climatic regions that favor its growth and survival. In North America, *Poa* is adapted to the cool regions along the U.S.-Canadian border and particularly along the Pacific west coast province and states. We find it capable of dominating putting greens in these cool and humid regions as well as western and central Europe, the Scandinavian countries (Sweden, Denmark, Norway and Finland) and New Zealand (Huff, 2003).

We have also observed that *Poa* is regularly maintained as putting greens in some subtropical climates as well. For example, greens comprised of nearly 100 percent greens-type *Poa* that are surrounded by bermudagrass fairways exist on many courses near Melbourne and Sydney, Australia.

Continued on page 56

FIGURE 1



Many different types of *Poa* exist in nature, ranging from wild, weedy annuals (top plants) to perennial greens-type (bottom plants).

FIGURE 2



(Fig. 2a) Experimental *Poa* cultivars on the Club at Nevillewood and (Fig. 2b) at Apawamis Golf Club.

Therein lies a problem: seed is an extremely difficult commodity to produce from these forms of *Poa annua*.

Continued from page 54

Across some of these regions, our best experimental *Poa* cultivars have shown varied performance, ranging from very good to poor. Our selections all died in Sweden from their severe winter. However, in Australia these same selections performed well, including under conditions of high salt content (intentional) and drought stress (non-intentional). They have also performed well in research plot trials in California, Washington and Pennsylvania but not well at all in New Jersey.

Limited applications have been performed on golf courses near Pittsburgh and New York

City, with encouraging results (Fig. 2a & 2b).

So much so that the most common question we receive is no longer, "Why are you breeding *Poa*?" But rather, "Where can I buy seed?" And then people ask, "Do you have any seed?" And that is followed by, "When will you have seed?" And therein lies a problem: Seed is an extremely difficult commodity to produce from these forms of *Poa annua* (Fig. 3).

This year we began working with the seed company, DLF International, located in Oregon, to evaluate the seed yield potential from our best materials within the breeding program. From this point on, only time will tell if we will be successful, but I believe we will. We have several selections that have excellent turf quality and a "reasonable" seed yield. However, production will need to be tightly controlled as some strains of *Poa* are beginning to indicate to us that their genetic stability might be somewhat ephemeral in nature.

In other words, if too many consecutive generations of seed are produced in some strains under field conditions, then the seed progeny begin to look like something different than the parents.

We're not sure why this happens but we are currently conducting the genetic experiments required to sort this out. *Poa annua* is known to do some strange (uncommon) things genetically. For example, some plants have twice as much DNA (the genetic information) as other plants, and yet each has the same number of chromosomes (discrete packages of DNA). Other plants we've found possess only half the number of chromosomes as "normal" *Poa annua* and, as a result, produce completely sterile flowers, existing only through vege-

FIGURE 3



Seed production of various strains of perennial greens-type *Poa annua*.

tative propagation. Yet even these plants, we believe, are capable of occasionally producing a "sport" (vegetative offshoot) that contains the full compliment of chromosomes, thereby restoring seed fertility to that particular shoot.

Suffice it to say that we believe there are genetic mechanisms at work in *Poa* that we do not, as of yet, fully understand. As a geneticist, this makes *Poa annua* an even more fascinating species than what it already is.

It is fascinating because it performs so successfully in so many different environments and is essentially found worldwide, including the islands of Antarctica. It is fascinating because it seems to have out-manuevered every chemical and management technique attempted by the turf industry to control its occupation of putting greens (with the exception of hand-weeding). And it's fascinating because of its exceptionally high turf quality when unstressed. And when it's stressed it always comes back (Fig. 4).

We are only now beginning to understand some of the ecological factors related to its dominance on the green when it is in competition with creeping bentgrass.

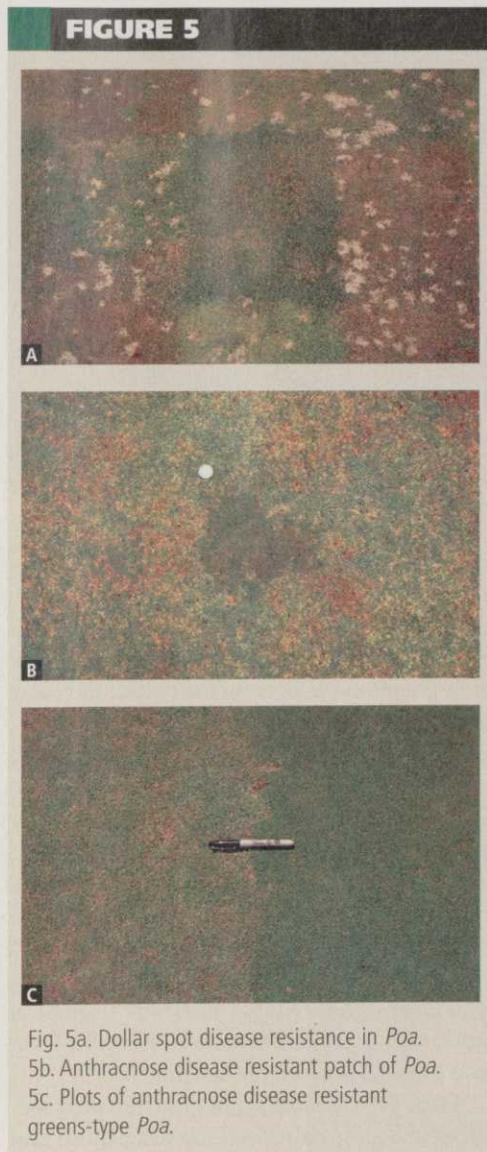
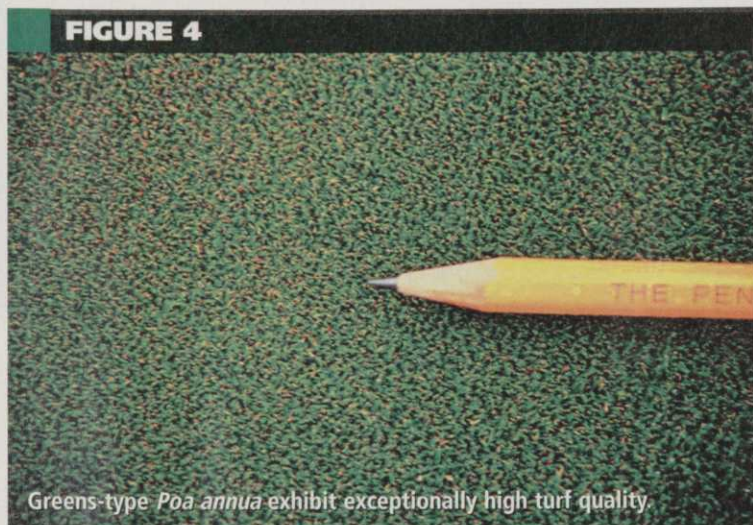
For example, *Poa* annuas are typically shallower-rooted and exhibit less winter tolerance and less heat tolerance than creeping bentgrass. *Poas* are also generally more susceptible to diseases and insect pests than bents. With only this information we would have to wonder why there is any *Poa* out there at all. We believe the reason why *Poa* persists on greens is that some plants are actually tolerant of these above stresses, enabling them to persist through stressful periods (Fig. 5a, 5b & 5c).

Moreover, we have found that greens-type *Poas* are able to fix more than 23 percent more carbon through photosynthesis and yet produce half as much clipping yields and half as much root mass as Penn A-4 creeping bentgrass (Fig. 6a & 6b) (Lyons 2002; Knievel and Huff 2003).

Carbon acquisition through photosynthesis is what enables plants to grow. Greens-type *Poas* seem to use their abundant supply of carbon not for deeper roots or long leaf blades but rather to produce a steady supply of tillers (shoots) in order to crowd out neighboring plants, including bentgrass as well as other non-greens-type forms of *Poa annua* (Fig. 7).

Our selections currently being evaluated for seed yield produce 26 percent more tillers than

Continued on page 58





QUICK TIP

Good nutrition requires all the essentials all of the time. It's a pretty basic approach to growing strong plants, but it can be tricky with closely mowed turf under stress. Carbon Power's crenic saprins and Floratine's other patented and organic agents enhance nutrient uptake and use, helping turf do its job like it is supposed to and building real strength at the molecular level.

FIGURE 6

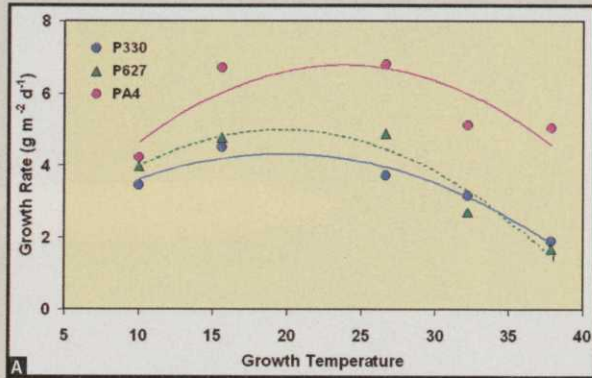
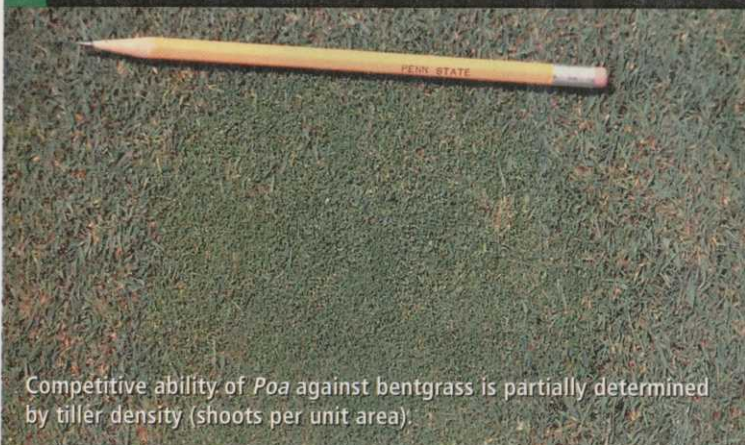


Fig. 6a. Turf canopy growth rate response to a range of temperatures. 6b (inset) Clipping a greens-type *Poa* canopy.

FIGURE 7



Competitive ability of *Poa* against bentgrass is partially determined by tiller density (shoots per unit area).

Continued from page 57

Penn A-4 under one-eighth inch greens mowing height. Some of our other experimental cultivars produce nearly 10 times that amount of tillers. Hence, useful management practices for such greens-type *Poas* include the following: vertical mowing to open up the canopy making room for new tillers, and the use of liquid as well as granular fertilizers in order to supply each tiller with an adequate supply of nutrients for growth and maintenance.

However, is shoot density (tiller number per unit area) the only reason for *Poa*'s competitive advantage against creeping bentgrass? Almost certainly not. We have preliminary evidence that such greens-type *Poas* are also more tolerant of traffic and have a higher seedling survival rate than bentgrass on established greens.

Thus, as we continue our efforts in seed production, we are also investigating these and

other ecological and genetic factors which enable *Poa* to be so variable as a species and yet so highly specialized to such unique environments as a golf course putting green.

To that end we have over the past 10 years provided seed of our *Poas* to many different research institutions who have performed their own experiments and have trained many students. Such research requests are increasing. So as 10 years come to a close, it feels good to have accomplished what we have and to know that many more questions still need to be addressed.

David R. Huff is an associate professor of plant genetics and turfgrass breeding at Penn State University. He works to solve basic and applied genetics problems for a wide range of grass and turfgrass species. He holds a M.S. and Ph.D. in genetics from the University of California-Davis and earned his B.S. in crop and soil sciences at Michigan State University.

REFERENCES

Huff, D.R. 2003. Chapter 2: Annual bluegrass. In: (eds.) M. Casler and R. Duncan. *Turfgrass Biology, Genetics, and Breeding*. John Wiley and Sons. Hoboken, N.J. Pp.27-38.

Knievel, D.P. and D.R. Huff. 2003. "Creeping bentgrass and *Poa annua* growth and physiological responses to temperature." Department of Crop & Soil Sciences, Pennsylvania State University, University Park, PA 16802. Presented at the Annual ASA-CSSA-SSSA Meetings, 2-6 November, Denver, Col.

Lyons, E. 2002. "Root Biology of *Poa annua* and Creeping bentgrass. Ph.D. Dissertation. The Pennsylvania State University." University Park, Pa.