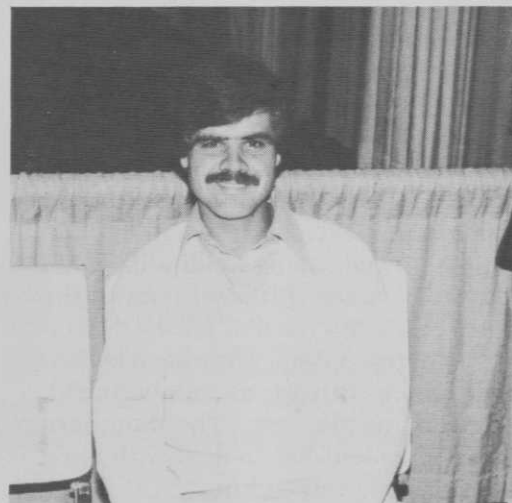


Southern Superintendents speak:



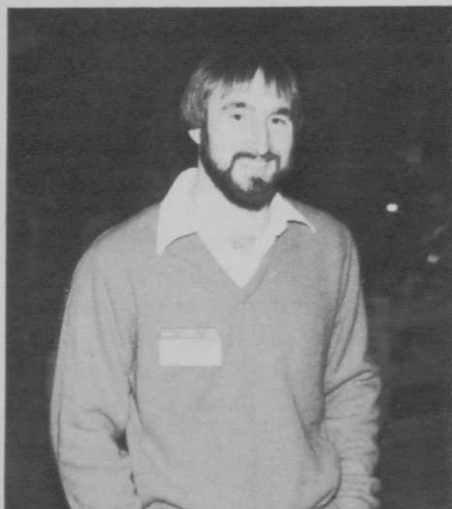
Aubrey Roy
Sea Pines Plantation

I've been irrigating with effluent water. I believe all the courses on Hilton Head will convert within the next ten years. We need to find out when crowfoot germinates in our area for a preemergent program and we need to know more about creeping charlie.



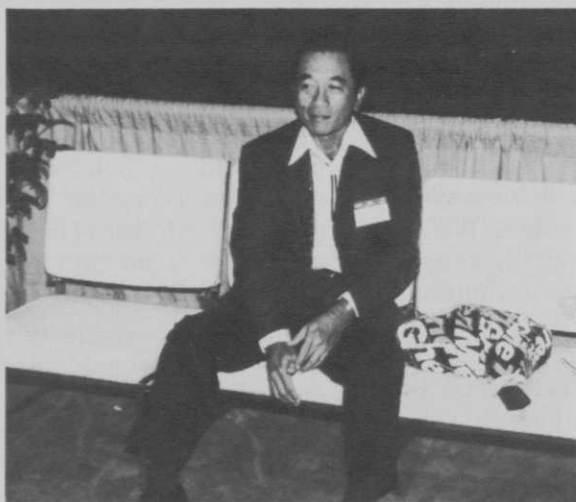
Jim Bertoni
La Jolla CC

Traveling for an hour, I can go surfing, ride a dune buggy, or ski. You can see the tremendous variation that occurs in golf courses.



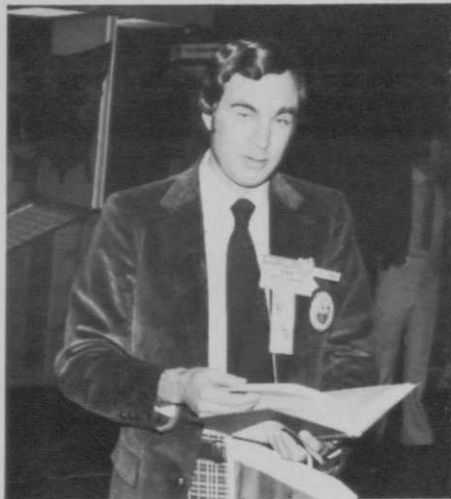
Ken Mangum
Lagoon Park

We have problems with transition. Last year I had ryegrass in July. The bermuda just sits there. It varies, though. Three miles down the road it'll be perfect. The next year I'll have the right conditions.



Lindy L.S. Loo
State of Hawaii

We have to carefully watch humidity in Hawaii. Our temperatures don't vary much, 68-72 in the morning, getting up around 82-84 in the afternoon. Summer humidity might be 10-25 percent, but in winter it gets up to 70, 80 or 90 percent. Pythium can become a problem.



David Harmon
Golden Horseshoe GC

Some courses in our area are putting superintendents on a bonus program. Anything they can save, they get a percentage of. It makes you think cost efficiency. Some extras you have to do if you're a resort course. If you're going to charge the prices of a resort course, golfers expect the luxury.

Courses in Arizona have to put up with extreme temperature changes. The irrigation system might be frozen in the morning, by mid-day it's a 110. A lot of courses are going with fertilizer injection systems. \$8,000 extra is not much when you're talking about \$600,000.



Bob Sanders
Antelope Hills GC

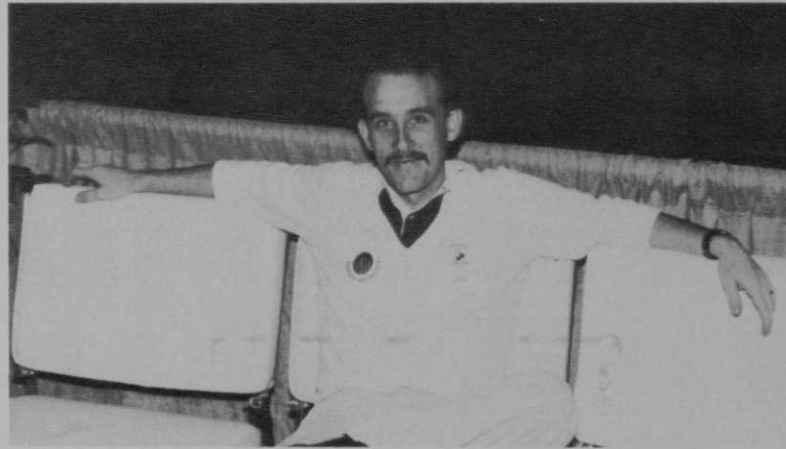
Larry Brooks
Oro Valley CC



Hunter Gammon
West Creek GC

The Carolinas are being recognized as a prime area for industry. Population is increasing. The Carolina's section of the PGA holds over 70 golfing events. Some of the biggest and most prestigious events are here.

Weather can shift the best plans. We had 18 inches of rain last September and had to aerify in October, right before winter. I didn't want to but would have had to put up with algae all year long.



Gary Morgan
Sherwood CC

I've found, at Royal Poinciana, that I can be more effective as a superintendent by relating my needs in terms the members can understand. For example, I relate my equipment needs in miles rather than hours. A member understands when you tell him a mower has 200,000 miles on it.



Clint Smallridge
Royal Poinciana GC

Tourism in Florida has gotten bigger, if anything. There are more people living here. Our main problem is going to be energy. We need to develop systems to create energy from our grass clippings. I've converted to diesel on all my equipment and am using only a third the gasoline of a year ago.



Hilding Hanson
Sahara CC

I went to the GCSAA show looking for answers about LP gas. I'm hoping to convert at least one greens mower, one fairway unit, and a run-about. I want to be ready in case the fuel situation gets critical. I'll still be able to get things done. Besides, it's much cleaner and more efficient.



Bob Sanderson
Port Charlotte GC

You have to have an irrigation system in Arizona. Then you have to find the water for it. We do a lot of aquatic weed control, taking care of our water sources.



Paul McGinnis
Palmbrook CC

Ron Powell
Pinetop CC