

Tools of the Trade...at John "Jake" Fake's President Broadwater GC

BILOXI, Miss. — Superintendent John "Jake" Fake here at the President Broadwater Golf Club traveled south to further his turfgrass education at Lake City Community College (Fla.), and hasn't looked back.

"I grew up in upstate New York," said Fake. "My father was an avid golfer, and he knew the importance of a good superintendent. After learning to play golf myself and working on a golf course, I decided to advance my education. One thing that I knew was that I wanted to live where it was warm, so I applied to Lake City Community College."

Fake has stayed to enjoy the weather and accelerate his career at courses throughout the Southeast, including: Glen Arven Country Club in Thomasville, Ga.; Hilaman Park Municipal Golf Course in Tallahassee, Fla.; and Innisbrook Resort in Tarpon Springs, Fla. He has been at his current club for the past four years.

The 18-hole course is owned and operated by President Casino Broadwater Resort which purchased the facility in 1997.



A renovated bunker on the fourth hole

The 7,100-yard layout was designed by Early Earl Stone and opened in 1968. "We have

several corporate outings and local tournaments, so one of my main challenges is just keeping the course in consistently good shape," said Fake.

An ongoing bunker installation and renovation project will keep Fake busy this season as well as the start of a tree planting program at the facility. "Last season we added two new bunkers on the 18th hole," he said. "This season we'll probably renovate two greenside bunkers, one each on holes one and three."

HURRICANES FORM LINKS LOOK

The course was originally designed as a more traditional tree-lined layout. "Hurricane Camille [1969] came through here the year after the course opened and took down several hundred trees," said Fake.



Pine trees were knocked down at President Broadwater from Hurricane George in 1998

"Hurricane Fredrick [1979] also destroyed some of the plant life on the course. Then Hurricane George came through in 1998 and knocked down some of the pine trees on the property. The layout almost plays like a links-style course now."

The club has a unique arrangement with one of its members who owns and operates a nursery. "It's like a barter system. We keep track of how many times he plays the course, and from time to time, we visit his nursery to make some plant selec-

FAKE'S TOOLS

GREENS MOWERS: 1 Toro 3100, 1 John Deere 2243

TEE MOWERS: 2 Toro 3100

FAIRWAY MOWERS: 1 Toro 6500

ROUGH MOWERS: 1 John Deere 3235A, 1 Bush Hog TDM-11, 2 Toro Groundsmasters

RIDING BUNKER

RAKE: 1 Toro 2020

Sand Pro

TURF UTILITY VEHICLES: 3 Toro Workman

VERTI-CUT REELS:

Toro Greens, Fairway

Verti Cut

AERIFIERS: Toro Fairway Aerifier, GA-30,

Aerway

TOPDRESSERS: Toro

Metermatic

REEL GRINDER: Foley

BEDKNIFE GRINDER: Foley

IRRIGATION PUMP STATION:

Original motor running off two wells,

1,800 gpm

IRRIGATION SYSTEM: 1968 Toro

Monitor II with Buckner valves and

Toro heads

GOLF CAR FLEET: 80, electric

FLAGSTICKS: 7 foot, yellow

PRIMARY HERBICIDE: Manor

PRIMARY INSECTICIDE: Dursban, Orthene TTO

PRIMARY FUNGICIDE: Daconil Weatherstik

PRIMARY SLOW-RELEASE FERTILIZER: Nutralene



A view of Fake's maintenance facility with the oldest piece of equipment, a 1979 Chevy dump truck, to the left.

ONE THING YOU CANNOT LIVE WITHOUT: a good crew

OLDEST PIECE OF EQUIPMENT ON

COURSE: 1979 Chevy Dumptruck

TOTAL SQUARE FOOTAGE OF

MAINTENANCE BUILDING(S):

10,400 sq. ft.

ANNUAL ROUNDS OF GOLF

PLAYED: 45,000

NORMAL GREEN SPEED: 8' to 8.5'

tions for the club. It's a good way to get plant materials," said Fake.

"Our club is relatively flat due to the storms that have come through here," he continued. "We have mostly pines left on the course, so we've been trying to plant some more oaks to add a greater mix. We also have planted some azaleas, oleanders and camilla bushes as part of a beautifica-

tion project around the tees."

Fake will be attending a landscape course at the GCSAA Conference and Trade Show in Orlando this month.

"I try to go every year because it is a great way to network with other superintendents," he said. "I like to keep up on continuing education classes as well as check out all the new equipment at the trade show."

Trion Direct

Gives You

a Straight

Approach



Equipping your shop with the best turf equipment lift is incredibly easy. When you work with a factory direct sales consultant at Trion, you'll quickly get all the information you need:

- Brand comparison data
- Technical assistance
- Referral contacts
- Maintenance planning help
- Lift accessory information
- Real budget numbers
- Shop floor plans
- Custom lift option

With Trion's factory direct sales and service, you make the right choice — we'll take care of the rest!

Call Today!
800-426-3634

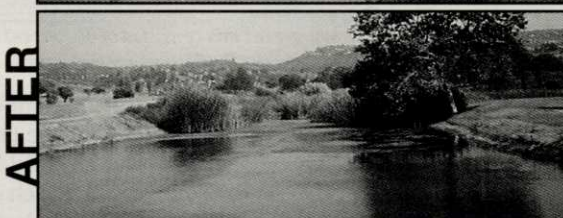
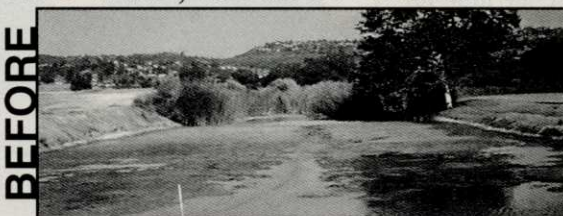


GCSAA BOOTH #3664

EP AERATION

THE LEADER IN SUB-SURFACE ACTIVATED OXYGEN/AERATION SYSTEMS

Your Water, as Nature Intended It . . .



Need we say more?

Call for information on the most cost-effective, bottom-laid aeration equipment for lakes and ponds, and high-output ozone generators for closed-loop, recirculation systems. Proven in 100's of installations!

1-800-556-9251

2615 Meadow St., San Luis Obispo, CA 93401
FAX 805-541-6149 www.epaeration.com



Shouldn't your Grounds Crew look as groomed as your greens?



Golf Shirts

\$7.95

with your logo

GOLF SHIRTS • CAPS
JACKETS • PANTS • RAINSUITS

CHESTNUT
IDENTITY APPAREL

800-336-8977

www.chestnutid.com