



BRIEFS

NGF: 29 NEW COURSES IN NOVEMBER

JUPITER, Fla. — The National Golf Foundation's latest tracking report on golf course construction activity across the United States shows that 29 new golf courses came on line during November of 2000. This brings to 490 the number of golf course construction projects that have been completed in 2000. November also saw a total of 47 golf course construction starts and the announcement of plans for 54 others.

COURSE BUILDER KITCHEN TURNS POLITICO

CRYSTAL RIVER, Fla. — Ron Kitchen Jr., president and CEO of Barbaron Specialized Golf Course Construction, was elected the new mayor of this town of 4,200 people on Florida's Gulf Coast. The 44-year-old Republican squeezed out a five-vote victory on Nov. 7. Kitchen has been active in leadership roles in a variety of local organizations, including the Crystal River Chamber of Commerce, the Economic Development Association of Citrus County and others. He also was appointed by Florida Gov. Jeb Bush earlier this year to the board of directors of the newly formed Workforce Florida Inc. Barbaron is a certified builder and charter member of the Golf Course Builders Association of America.

MARK GARRITY JOINS FORMA

IRVINE Calif. — FORMA, a land-planning, design and landscape architectural firm here, has added Mark Garrity to its staff. A licensed landscape architect, Garrity has more than 15 years' experience in golf course and resort landscape design. With FORMA, he'll be working on large-scale master planned golf course communities, resort projects and golf course landscape architecture. He also will be a director of the company. In the past, Garrity worked extensively in Thailand and Indonesia for Lifescapes, based in Newport Beach, Calif. He also worked as on-site art director during construction of the famed Shadow Creek Golf Club in Las Vegas, Nev. "We put in 10,000 trees, and I was in the field directing placement of streams, boulders and other features," he said.

GOLF COURSE NEWS

Bandon Dunes Resort adding Pacific Dunes layout

By JAY FINEGAN

BANDON, Ore. — Hot on the heels of one of the most acclaimed new courses, Bandon Dunes Resort here on the southern Oregon coast is preparing to introduce another new layout, this one by golf architect Tom Doak.

Last year, the big news was Bandon Dunes, which quickly zipped up the charts to be ranked as the number-one resort course built after 1960; the best upscale daily-fee course of 1999; the 44th-best golf course in the United States and number 80 in the world. All that in its first year.

The noise this year is coming from Pacific Dunes, set to open in July. The par-71 layout, measuring 6,700 yard from the back tees, rests on a stretch of Pacific Ocean coastline that draws comparisons to the revered Alister MacKenzie course, Cypress Point.

Doak, who heads up Renaissance Golf Design, of Traverse City, Mich., has cut a jewel from the coastal terrain and inland dunes.

HUMONGOUS BUNKERS

The course, just north of its sister Bandon Dunes track, features undulat-



The 11th hole at Pacific Dunes, a new Tom Doak design at Bandon Dunes Resort on the Oregon coast.

ing fairways, small but thoughtful greens, and a landscape that blends seamlessly with native vegetation and with the tract's wind-whipped sand masses.

Bunkers are another highlight. Two of

the largest bunkers on any golf course in America rest along the par-4 second hole and on the 18th, a strong, par-5 finishing hole.

Continued on page 19



The 10th hole at Pine Hill Golf Club features numerous bunkers and waste areas, which are prevalent throughout the course

Empire Golf opens Pine Hill

By ANDREW OVERBECK

PINE HILL, N.J. — Developer Eric Bergstol has added another course to his Empire Golf stable with the opening of the Tom Fazio-designed Pine Hill Golf Club here.

The new layout, which is a short drive from downtown Philadelphia, is in keeping with Bergstol's strategy to build quality public courses in underserved areas. "You have some of the best private courses in the country here," he said. But I've always believed the public should have the opportunity to play quality golf courses."

Continued on page 19

Stephen Kay's Architects' Golf Club nearly completed

By JAY FINEGAN

PHILLIPSBURG, N.J. — For 18 years, Stephen Kay harbored a plan to design a course commemorating the great golf architects of the past. His idea wasn't to copy their layouts but to capture their styles — the way they fashioned their bunkers, the way they shaped their greens, the subtle nuances and contours that gave their courses distinct personalities.

"I wanted to take golfers on a history lesson, starting in order from Old Tom Morris, who began doing golf architecture in Scotland in the 1860s," Kay said. "But I never found a client who was willing to do it."

Finally he did find an accommodating group of developers who wanted to build a course here in northwest New Jersey. They told Kay, "Stephen, you're the architect, you do what you want to do."

With carte blanche clearance and 175 acres of farmland to sculpt as he chose, Kay finally brought his old dream to life. The Architects' Golf Club, inspired by the artistic genius of 17 of the game's greatest designers, will open here in Phillipsburg next summer. The daily-fee course is nearly finished, and Kay seems pleased with the outcome.

BUILT TO MODERN NORMS

The par-71, 6,844-yard layout, featuring five par-3 holes, will

Continued on page 20



View of the Snow Mountain Course at the Paiute Golf Resort.

Nevada's Paiute tribe building third Dye course

By JAY FINEGAN

LAS VEGAS, Nev. — Construction has begun on a third Pete Dye course here at the Las Vegas Paiute Golf Resort. The 7,400-yard layout is part of the resort's \$500-million destination project that already includes two Dye courses, along with a clubhouse and banquet facilities.

The \$170-million "phase two" of the master plan includes the third course plus a fourth course, and involves construction of a casino, conference center and "luxurious" accommodations.

"Our third course will differ dramati-

Continued on page 18

JANUARY 2001 15

Architects GC

Continued from page 15

be given coherence by Kay's technical skill and desire to lay the course out to meet contemporary standards.

"I'm a big believer in not building bunkers that will wash out in heavy rain," he said. "Some of the old-timers didn't care about that, but we did. So we designed the bunkers in their classic styles but

made sure that functionally they were right.

"I was there to say where the bunkers needed to be placed for today's game – how we're hitting the ball today, how the fairways are watered," he said. "And we're not going to have little dirt tees where you put down some sand and hit off the sand. The tees are built properly for today's play. Same thing with the greens. It's not like we're going to mow the

Old Tom Morris green at half an inch. We're going to mow all the greens at the same height."

But starting with the first hole – a 518-yard par-5 – the course will reflect a century of course design.

"I sat down with Doug Smith, our vice president, and Ron Whitten, a golf historian, and we came up with the architects," Kay said. "If there were 200 of them from 1860 to 1960, we got the best 17. We had a lot of examples to

look at from a style standpoint. I teach golf design at Rutgers University, so I know it fairly well."

"We really wanted American architects more than Scottish or Irish," Kay added, "but we felt we needed to start with the patron saint of golf architects, Old Tom Morris. And then for the second hole, we came right to the United States. And who was the first person doing golf architecture here? C.B. Macdonald."

A WHO'S WHO OF DESIGN

From there the list sparkles with names from golf's storied past – Devereux Emmett, A.W. Tillinghast, Alistair Mackenzie, Perry Maxwell, Dick Wilson. Kay reserved his finishing hole – a 405-yard par-4 – for Robert Trent Jones, Sr. "We looked at his style from the 60s," Kay said. Only Donald Ross appears twice, inspiring the ninth hole and the 15th.

Kay said each hole will have a distinct character, but that some will be similar in style. "What is the major thing that architects do differently?" he said. "Well, sometimes they place their bunkers in different places. Also, the shape and design of the bunkers – whether the sand is flashed or grassed out. Those are very characteristic things.

"For instance," he said, "take George Thomas, who did Riviera Country Club in California. He did these very narrow fingers that came down into the bunkers, and the sand was flashed up. His bunkers are very distinguishable. He happens to be our 10th hole. But then you come to the 11th, which is William Flynn, who did Shinnecock Hills. There, bunkers are more rounded, elliptical, with no fingers, grass down the banks, and with more high grasses growing around those bunkers."

Moving onto the 12th hole, Kay designed a redan green, after the style of Charles Henry Banks. "Banks did some redan type greens, especially when he was with C.B. Macdonald," he said. "We're actually flashing up part of that green with some concave flashes, where we really raise up the green."

PLAQUES AND PLACE MATS

The proof of a good course is in the playing, of course, and Kay honed to a time-honored design precept. "Whenever you do a concept type of course, you better have good golf holes," he said. "There is that little hook or gimmick, if you will, to bring golfers in to see this thing. But you better have a good layout, a lot of variety, and it better be a course that the average player and the good player can both enjoy.

"I think we did that," he allowed. "If you'd ask 100 players which holes they liked the most, which were the most memorable, I think they'd mention seven holes, not just one."

At each tee box, a plaque will feature a picture or rendering of the architect who inspired that hole, and the years during which he practiced. "We're also going to list four or five of the courses he did, on this plaque," Kay said.

A yardage book will provide more information about the designers, and the placemats in the clubhouse will feature pictures and descriptions of the architects.

The Architects' Golf Club is located near Interstate 78, just across the Delaware River from Pennsylvania, on the New Jersey side. ■

GOLF COURSE NEWS

4th Annual New England Regional Turfgrass Conference & Show

March 7-9, 2001
Rhode Island Convention Center
Providence
A Combined Six States Show...

Show & Conference Pass Includes

- Opening Reception
- Admission to Trade Show
- Educational Sessions
- Keynote Speaker
- Show Reception
- Luncheon Voucher(s)

Over 400 Turf Related Booths Await You...

Meet professionals on the cutting edge of turf management. See the latest in equipment, products and supplies. Join fellow lawn, golf, sports, landscape, municipal and other turf industry professionals.

GCSAA SEMINARS:

Tuesday, March 6 • 8am - 5pm

Advanced Weed Management

TRADE SHOW HOURS:

Wednesday, March 7 • 5pm - 8pm

Thursday, March 8 • 10am - 2pm / 4pm - 6pm

Friday, March 9 • 9am - 2pm

EDUCATIONAL SESSION HOURS:

Wednesday, March 7 • 9am - 5pm

General Session & Keynote Speaker Jim Nantz

Thurs., Mar. 8 • 8am-10:30am / 2pm-4pm

Fri., Mar. 9 • 8:30am-11am / 11:15am-1:15pm

Informative Presentations

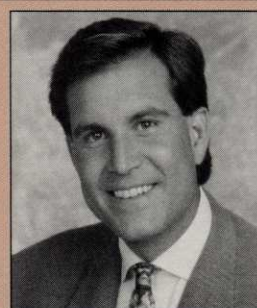
- Golf Course Management
- Lawn & Landscape
- Sports Turf & Municipal Turf Management
- Equipment Management
- Student Career Seminar

Certification Credits

Pesticide Applicators Recertification Credits have been requested for all New England states, NY & NJ.

Keynote Speaker • March 7th • 4pm
Jim Nantz

Anchor of *The NFL Today* the CBS Television Network's NFL pregame studio show, Jim Nantz has covered virtually every sport for the Network since joining CBS in 1985. His extensive credits include serving as anchor of CBS's golf coverage, including the PGA Championship and The Masters.



Presented by:

The New England Regional Turfgrass Foundation
in cooperation with the University of Rhode Island
and the University of Massachusetts

For the benefit of the New England Golf & Green Industries. Proceeds dedicated to the support and development of turf research and education.

Watch your mail for your registration form or call
(401)848-0004 or visit us online at **www.NERTF.org**